

# 437 Madison Avenue

Partial 20th Floor | Suite 2002 | 3,701 RSF  
Pre-Built

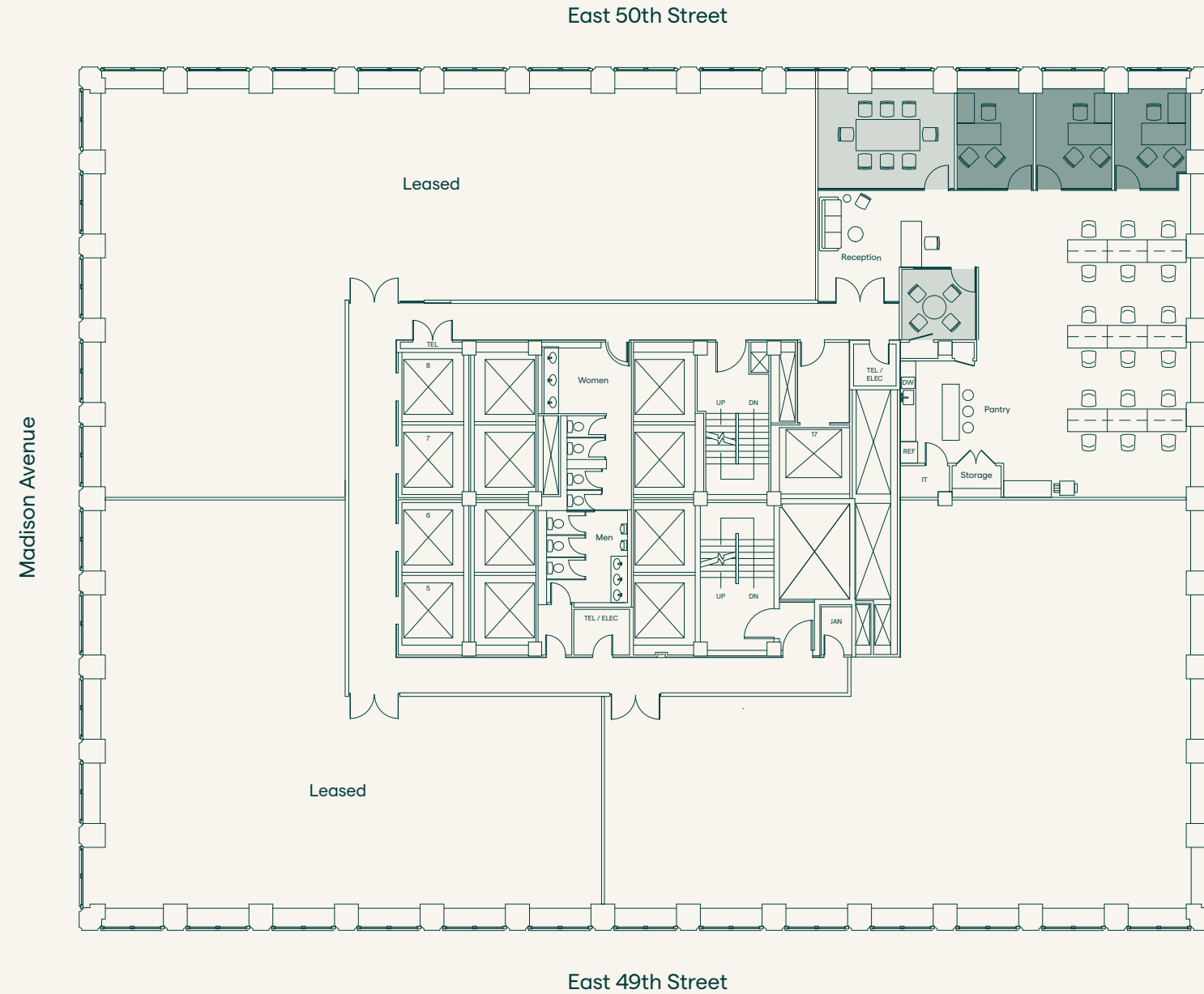
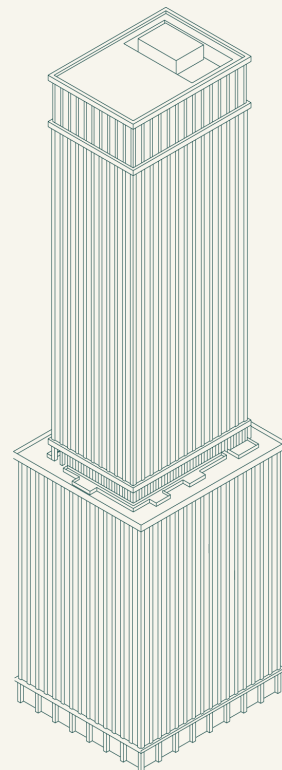


## Equip by Sage

Turnkey office spaces that are built, designed, and tech-enabled, with furnishings, decor, botanicals, and installed air quality sensors, prepped for immediate occupancy.

**Total Headcount** 22

■ <b>Private Spaces</b>	
Offices	3
■ <b>Collaborative Spaces</b>	
Conference Room	1
Meeting Room	1
□ <b>Open Spaces</b>	
Workstations	18
Pantry	1
Reception	1



**Michael Lenchner**  
Sage EVP & Director of Leasing  
+1 212 758 0437  
mlenchner@sagerealty.com

**Jack Brennan**  
Sage Senior Leasing Associate  
+1 212 758 0437  
jbrennan@sagerealty.com