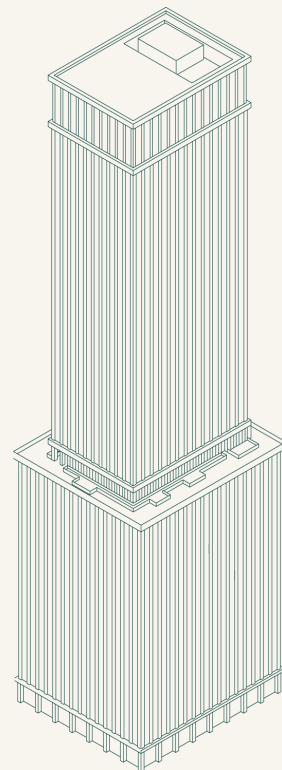
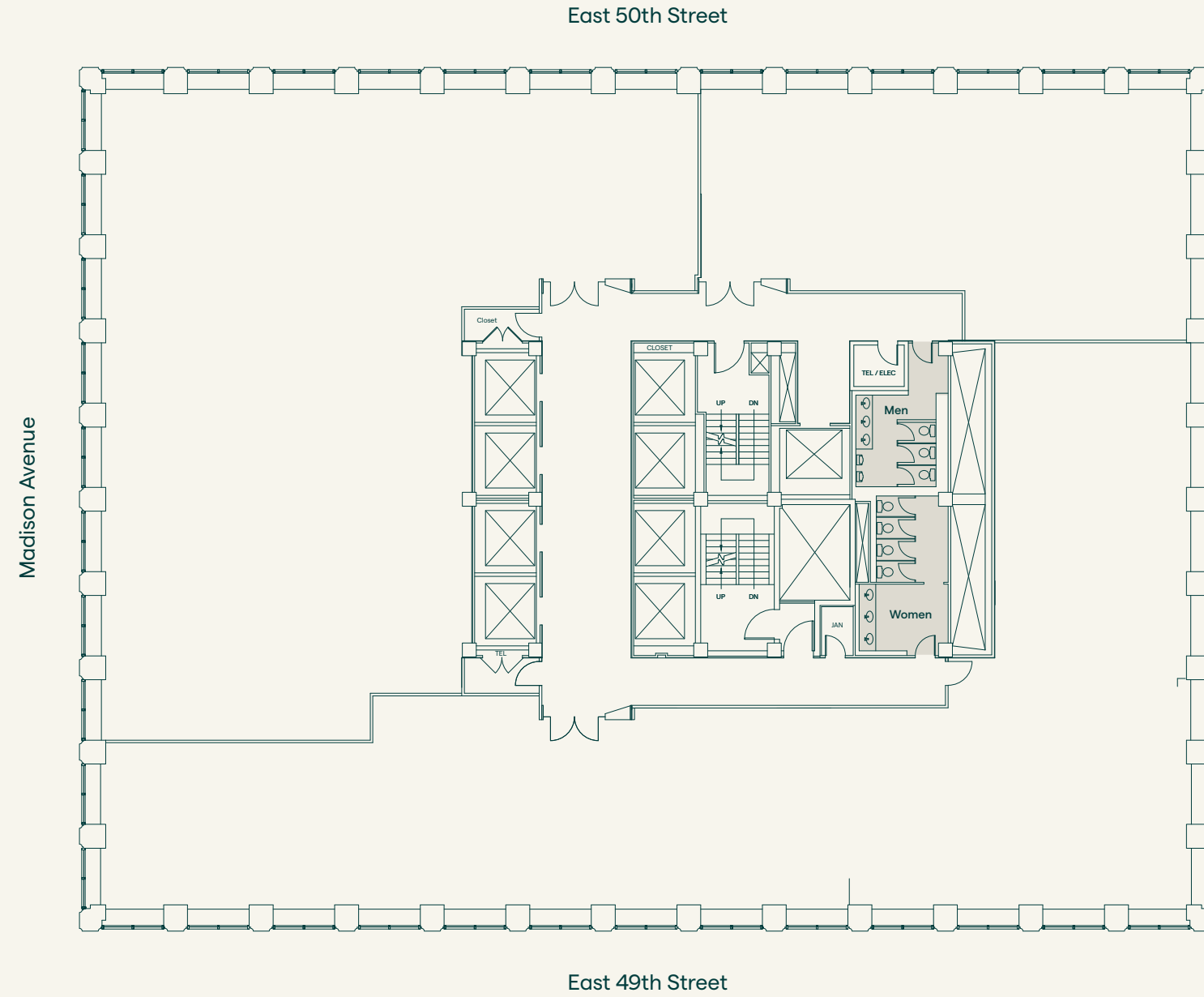


# 437 Madison Avenue

Partial 28th Floor | Suite 2803 | 8,040 RSF  
Core & Shell



**Michael Lenchner**  
Sage EVP & Director of Leasing  
+1 212 758 0437  
mlenchner@sagerealty.com

**Jack Brennan**  
Sage Senior Leasing Associate  
+1 212 758 0437  
jbrennan@sagerealty.com

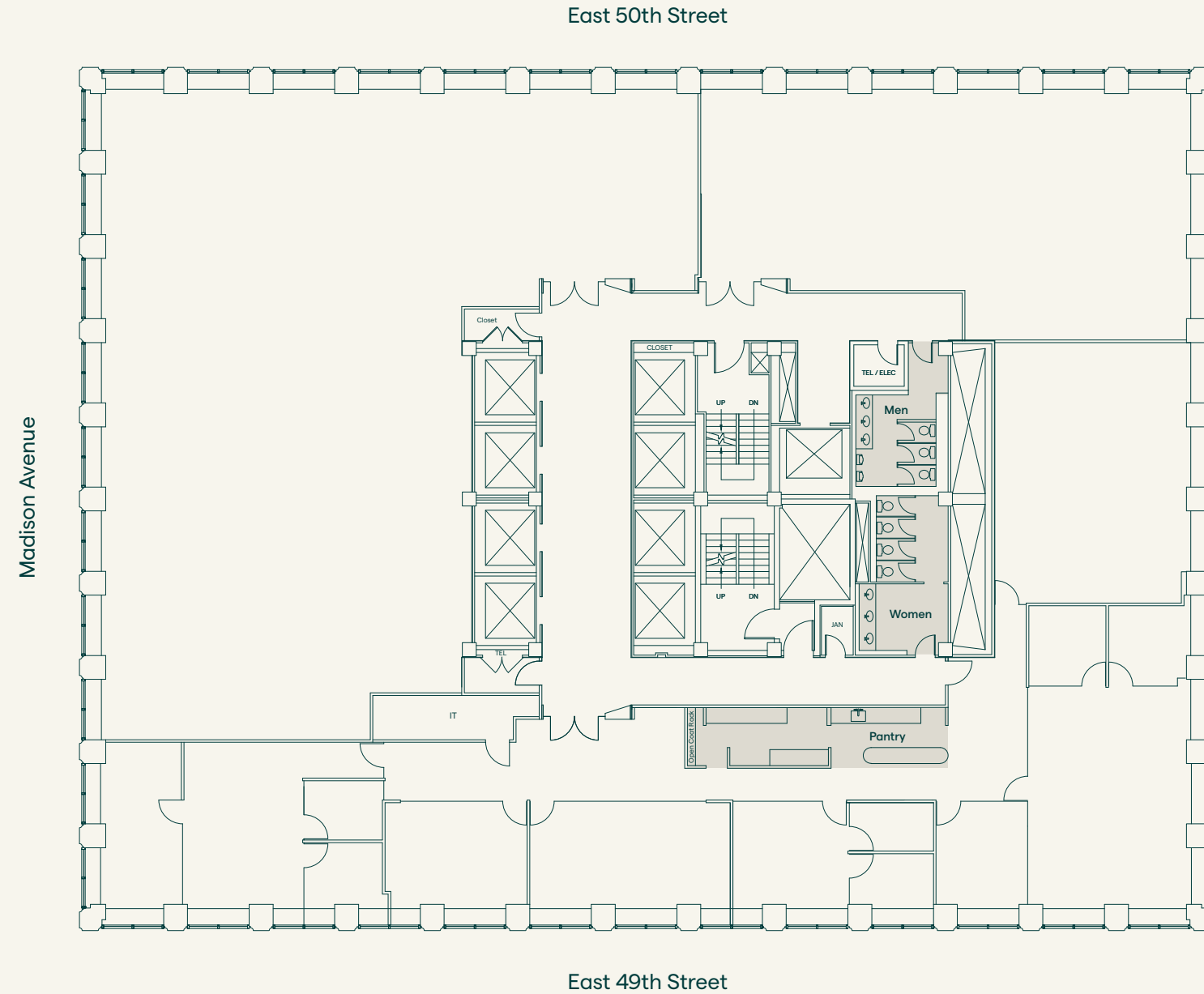
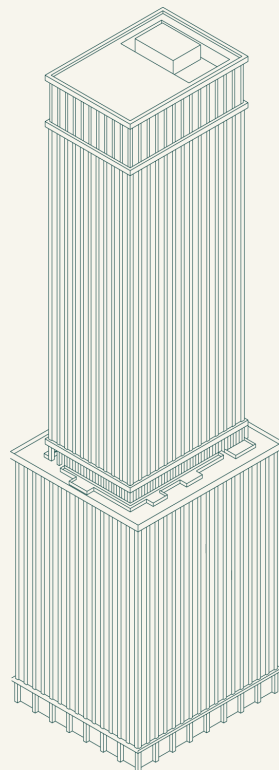
**A Sage Property**

# 437 Madison Avenue

Partial 28th Floor | Suite 2803 | 8,040 RSF  
Existing Conditions

## Select

Existing, built space with customizable capabilities geared to meet your design needs and move-in requirements. Select Suites are ideal for immediate or near-term occupancy with flexible lease terms.



**Michael Lenchner**  
Sage EVP & Director of Leasing  
+1 212 758 0437  
mlenchner@sagerealty.com

**Jack Brennan**  
Sage Senior Leasing Associate  
+1 212 758 0437  
jbrennan@sagerealty.com