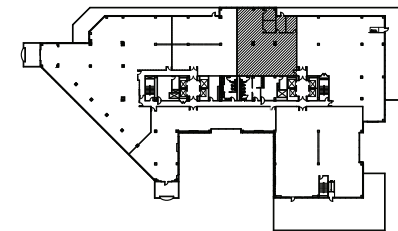
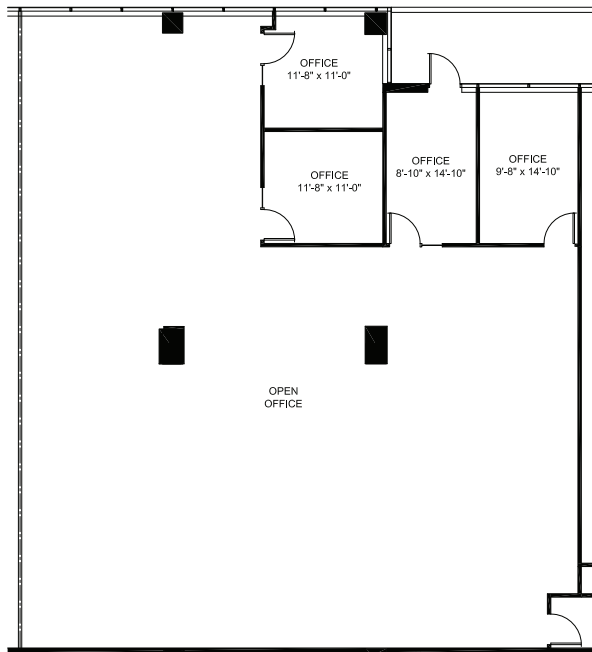




CALIFORNIA  
PLAZA

SUITE 770

3,916 RSF



KEY PLAN

For more information or to schedule a tour, contact:

**Kirk Beebe**  
Senior Vice President  
+1 925 251 4611  
kirk.beebe@cbre.com  
Lic. 00854169

**Phil Damaschino**  
First Vice President  
+1 925 251 4630  
phil.damaschino@cbre.com  
Lic. 01729529

California Plaza | **WORK WITH MOMENTUM**

5-Star Service  
WORLDWIDE™

**CBRE**

2121 North California Boulevard | Walnut Creek, CA 94596