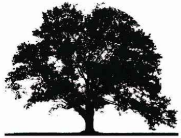
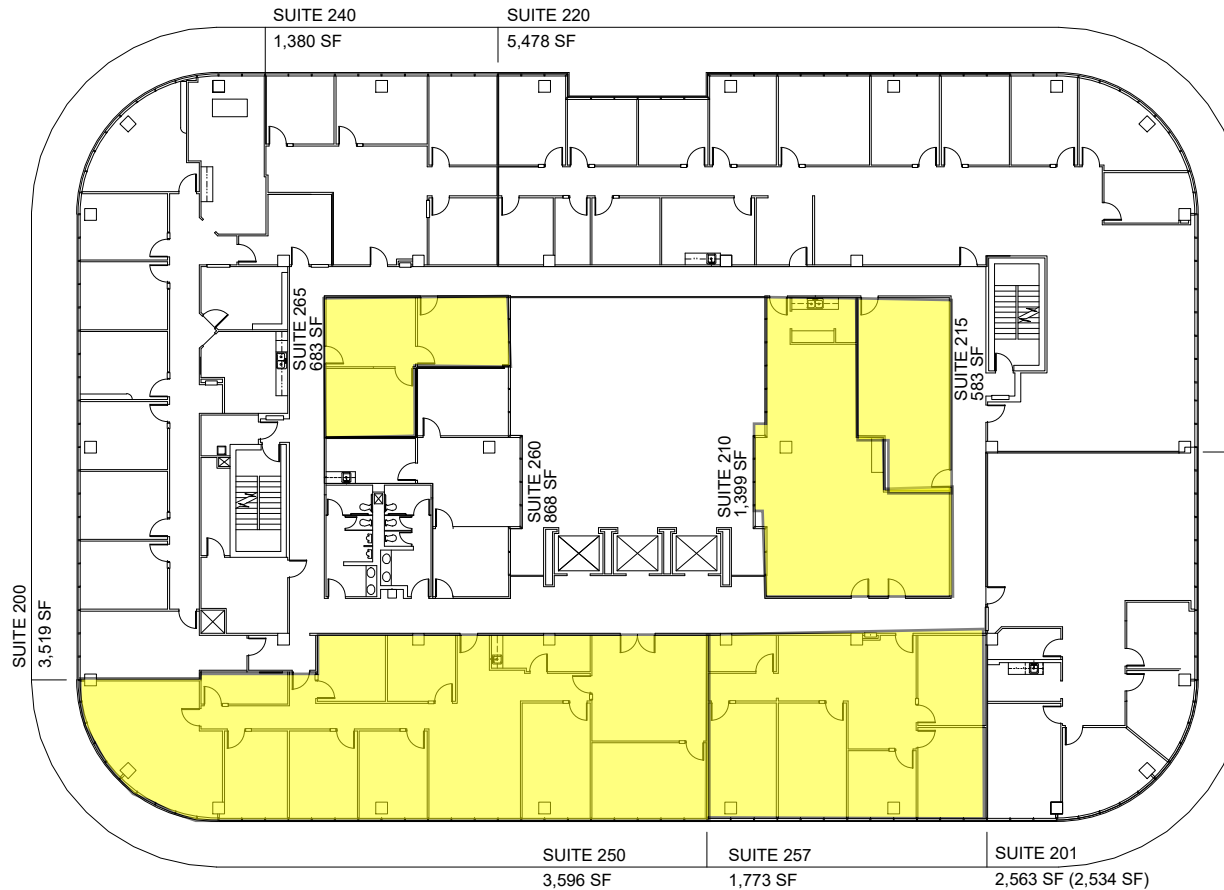


A Project of



Woodbranch Management, Inc.
Visit www.woodbranch.com.

TOTAL CONTIGUOUS:
11,904 NRA



For Leasing Information:
Steve Rocher
steve.rocher@cbre.com
Kristen Rabel
kristen.rabel@cbre.com
Parker Duffie
parker.duffie@cbre.com
voice: 713-577-1600
fax: 713-577-1677



9800 Richmond - Level 2

Houston, Texas

The Wingfield/Sears Group, Inc.

ARCHITECTS

INTERIOR DESIGNERS

2900 WESLAYAN, SUITE 310
HOUSTON, TEXAS 77027

PH 713/627-9690
FX 713/627-9680

10 Jan 19