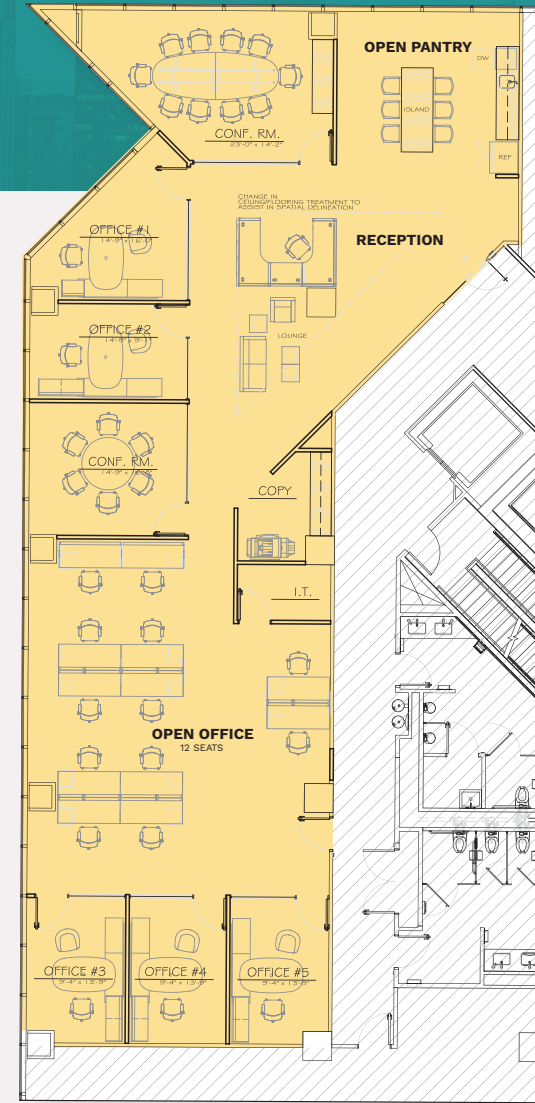


# SUITE 2650

## 3,878 RSF

### Suite Specs:

- Fully furnished spec suite
- 161 RSF/employee
- 21 workstations
- 2 private offices
- 1 large/1 small conference room
- Open pantry/lounge



## PROMINENT. DISTINCT. DYNAMIC.

For more information, contact the leasing team:

**SARA SPICKLEMIRE**  
Senior Vice President  
+1 312 861 7864  
sara.spicklemire@cbre.com

**KELSEY SCHEIVE**  
Vice President  
+1 312 935 1910  
kelsey.scheive@cbre.com

**SETH TUSCHER**  
Vice President  
+1 312 935 1920  
seth.tuscher@cbre.com

[www.150northmichigan.com](http://www.150northmichigan.com)  
[www.AboveandBeyondforBusiness.com](http://www.AboveandBeyondforBusiness.com)