

# EMPIRE STATE BUILDING

## HIGHEST PRE-BUILTS IN NEW YORK CITY

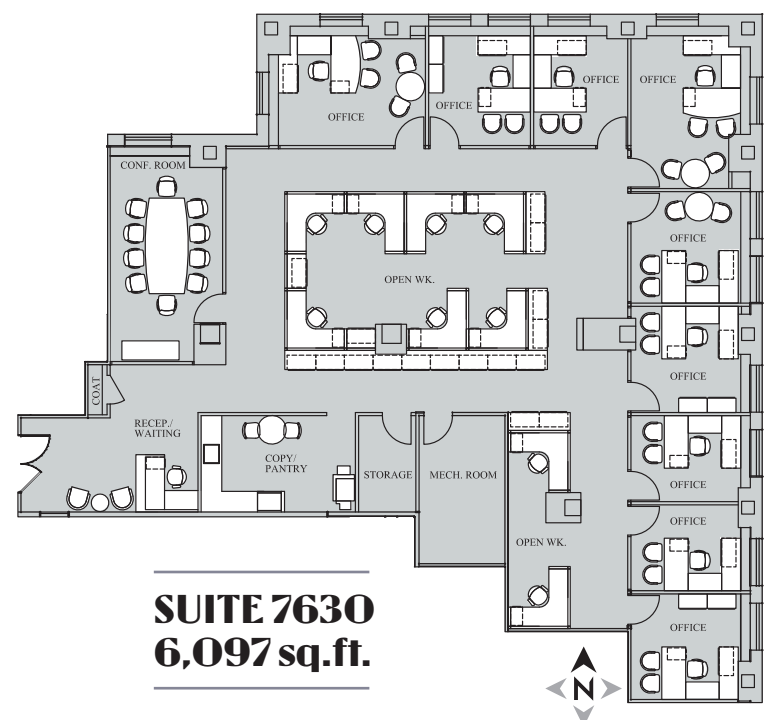
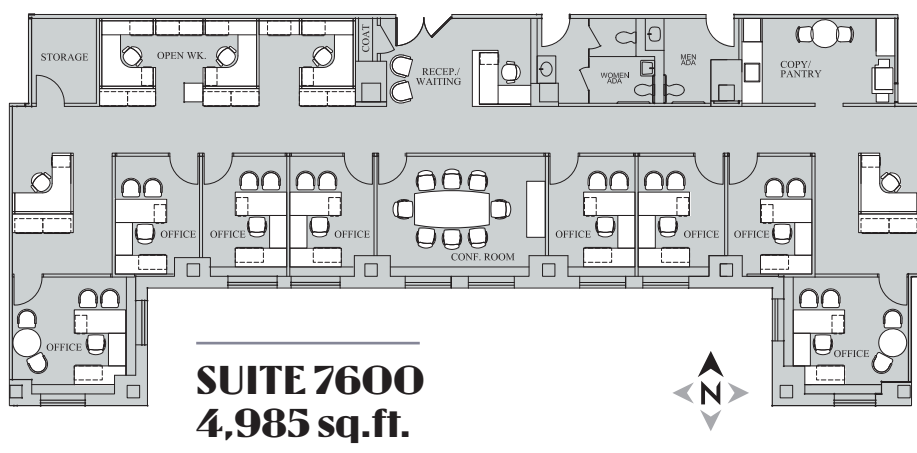
76TH FLOOR | 4,705 SQ.FT. – 6,152 SQ.FT.



High ratio of windowed offices  
to rentable area

ESRT standard finishes

Energy Star appliances



- Worldwide leader in energy efficiency with Energy Star rating, up to 50% tenant energy cost savings, LEED-EBOM Gold Certified
- \$550 million upgrade from our Art Deco masterpiece lobby to new Otis Destination Dispatch elevators
- Leading tenants include Coty, FDIC, Human Rights Watch, LF USA, LinkedIn, Shutterstock, Skanska, World Monument Fund
- Equidistant to Penn Station, Grand Central Terminal, The Port Authority Bus Terminal, 17 subway lines and the Times Square Shuttle

- White-tablecloth restaurant with private rooms and tenant-only fitness and conference centers coming soon
- Large block of over 104,000 sq.ft. available floors 55 to 58
- Full floors available from 23,265 to 32,750 sq.ft.; pre-built suites from 3,000 to 6,400 sq.ft.; spaces ready for custom install from 10,000 sq.ft.

**Thank you for giving us the opportunity  
to compete for your business.**

ESBNYCLEASING.COM • ESBSUSTAINABILITY.COM • 100% COMMISSION ON LEASE SIGNING



**William G. Cohen**, Executive Vice President  
212-372-2233 • wcohen@ngkf.com

**EMPIRE STATE**  
REALTY TRUST



Procuring broker shall only be entitled to a commission, calculated in accordance with the rates approved by our principal only if such procuring broker executes a brokerage agreement acceptable to us and our principal and the conditions as set forth in the brokerage agreement are fully and unconditionally satisfied. Although all information furnished regarding property for sale, rental, or financing is from sources deemed reliable, such information has not been verified and no express representation is made nor is any to be implied as to the accuracy thereof and it is submitted subject to errors, omissions, change of price, rental or other conditions, prior sale, lease or financing, or withdrawal without notice and to any special conditions imposed by our principal.