

ONE KAISER PLAZA

LIVE. WORK. PLAY.



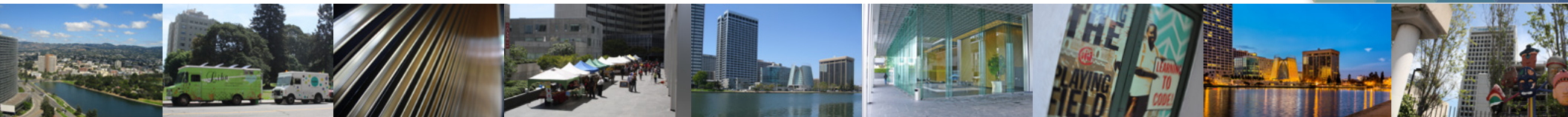
ONE KAISER PLAZA

LIVE. WORK. PLAY.



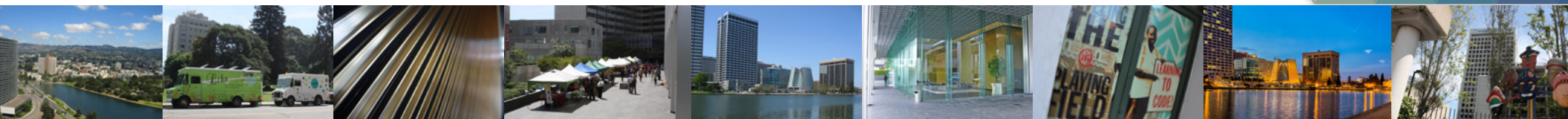
One Kaiser is located in the Heart of the Lake Merritt Market. With its close proximity to BART and easy access to I-580 and I-880, this premier Lake Merritt vantage point is a desirable office location within walking distance to well known restaurants Luka's Tap Room and Ozumo. Adding to One Kaiser's charm is one of Oakland's most dramatic 360 degree views spanning from Lake Merritt and the Oakland Hills to Downtown San Francisco and the Golden Gate Bridge.

SPACE AVAILABLE (click to jump to suite's floor plan page)



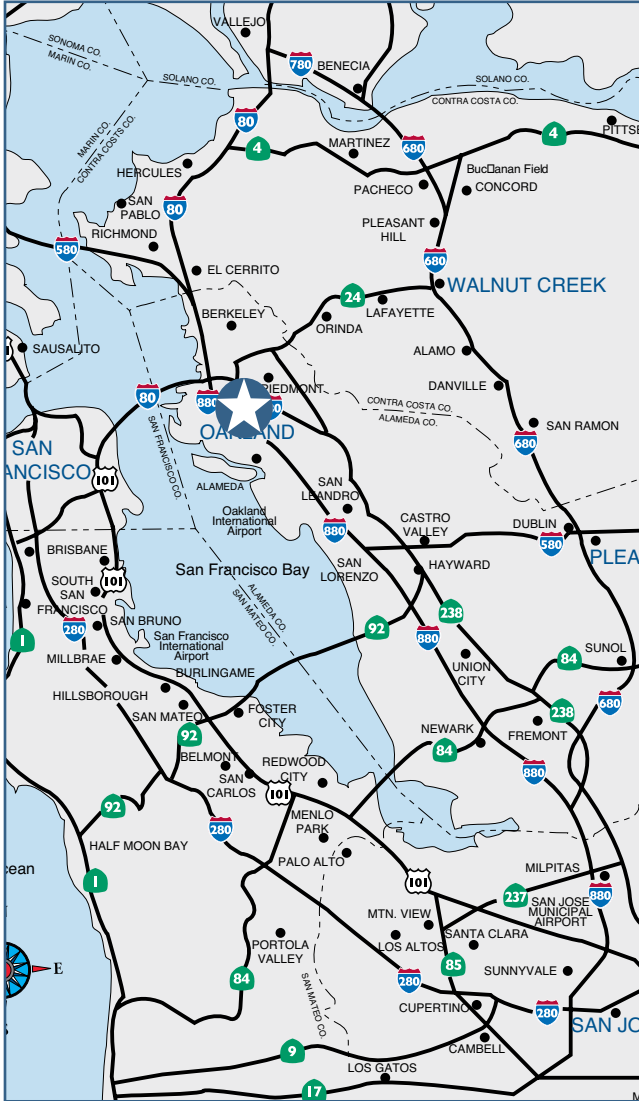
ONE KAISER PLAZA

LIVE. WORK. PLAY.



ONE KAISER PLAZA

LIVE. WORK. PLAY.



ONE KAISER PLAZA

LIVE. WORK. PLAY.



TRANSPORTATION

One Kaiser Plaza has easy access to BART (2 blocks) and numerous AC Transit lines, including TransBay buses.

LOCAL AMENITIES

One Kaiser Plaza is surrounded by great restaurants including:

- | | |
|---|---|
| 1) Flora at 1900 Telegraph Avenue | 12) The Terrace Room at 1800 Madison Street |
| 2) Ozumo at 2251 Broadway | 13) Ichiro at 412 15th Street |
| 3) Pho 84 at 354 17th Street | 14) Café 15 at 597 15th Street |
| 4) Farley's East at 33 Grand Avenue | 15) Awaken Café at 414 14th Street |
| 5) Luka's Taproom & Lounge at 2221 Broadway | 16) G.B. Ratto & Co. International Grocers at 821 Washington Street |
| 6) Pican at 2295 Broadway | 17) Levende East at 827 Washington Street |
| 7) Off the Hook at 2270 Telegraph Avenue | 18) Tamarindo Antojeria at 468 8th Street |
| 8) Franklin Square Wine Bar at 2212 Broadway | 19) Café Noir at 2442 Webster Street |
| 9) Axtlan Taqueria at 1904 Franklin Street | 20) Mua Lounge at 2442 Webster Street |
| 10) DaVan Thai Cuisine at 1803 Webster Street | |
| 11) Aroma Bakery at 1900 Franklin Street | |

Other amenities nearby include 24 Hour Fitness, Starbucks Coffee, ToGos, CVS Pharmacy, a US Post Office, FedEx/ Kinko's, Whole Foods and the beautiful Kaiser Rooftop Garden, which hosts summertime musical events.

Also located within just a few blocks of One Kaiser Plaza are numerous financial institutions including Bank of America, US Bank, Union Bank, Wells Fargo, Wachovia Bank, Chase Bank, Mechanics Bank and California Bank & Trust.

PLACES OF INTEREST

The Ordway Plaza hosts a farmers market weekly with fresh produce and entertainment. One Kaiser Plaza is just across the street from Snow Park as well as Lake Merritt and its 3.5-mile walking trail. Fairyland is just minutes away and the historical Fox and Paramount theaters are located within a few blocks.

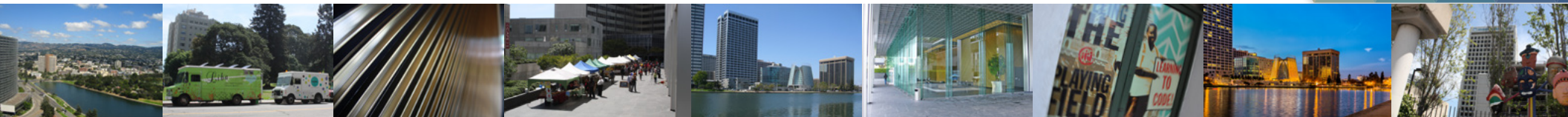
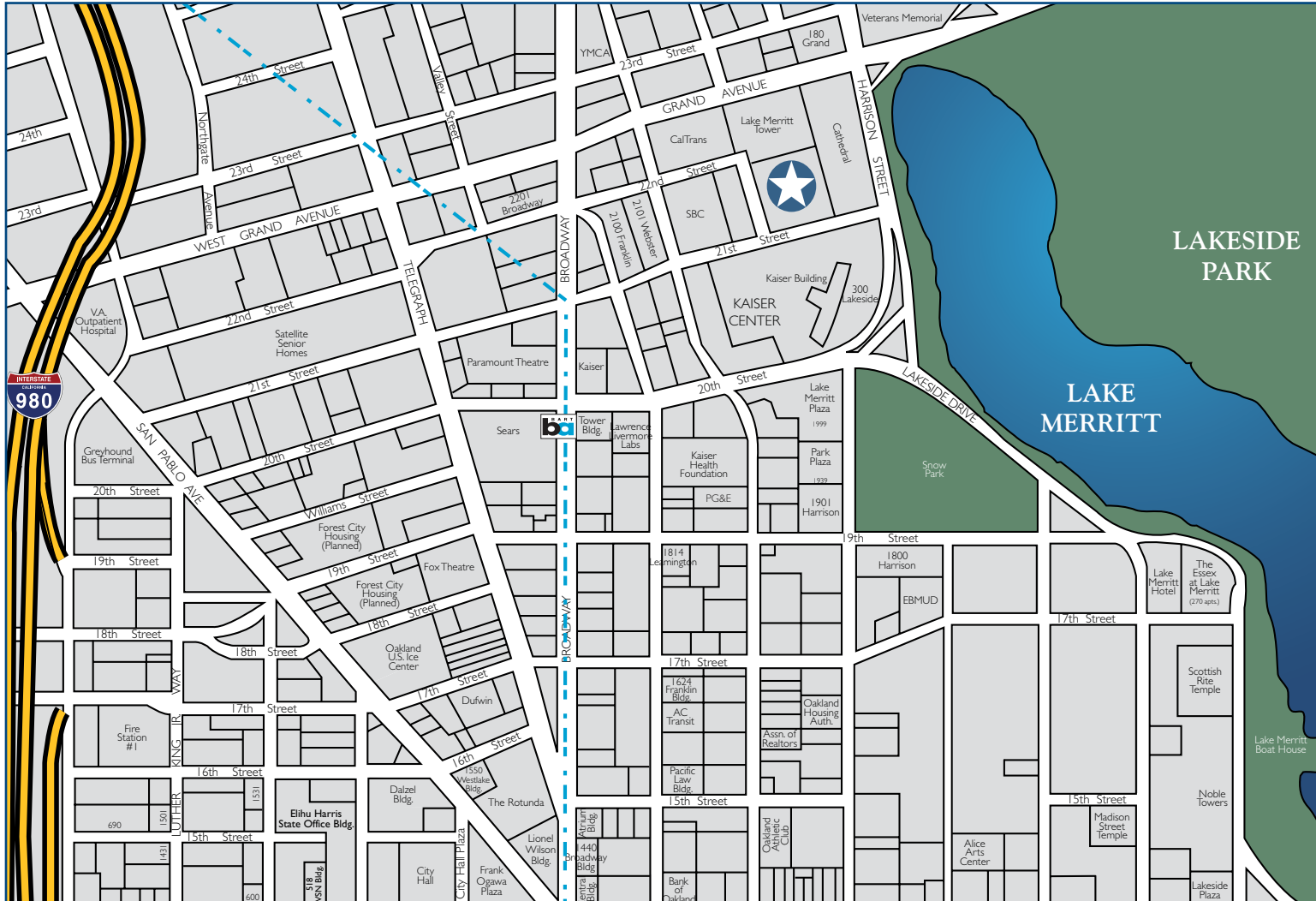


ONE KAISER PLAZA

LIVE. WORK. PLAY.



PARKING (mouseover numbers for detailed description)

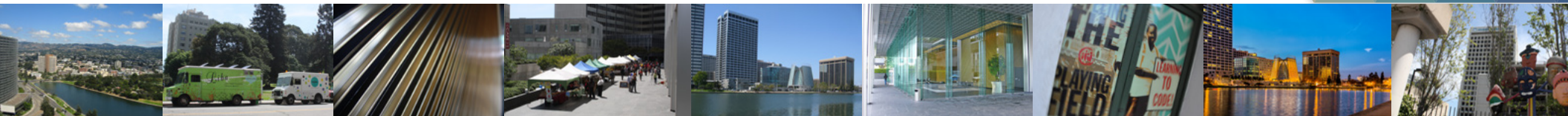
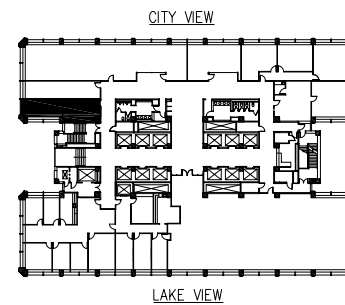
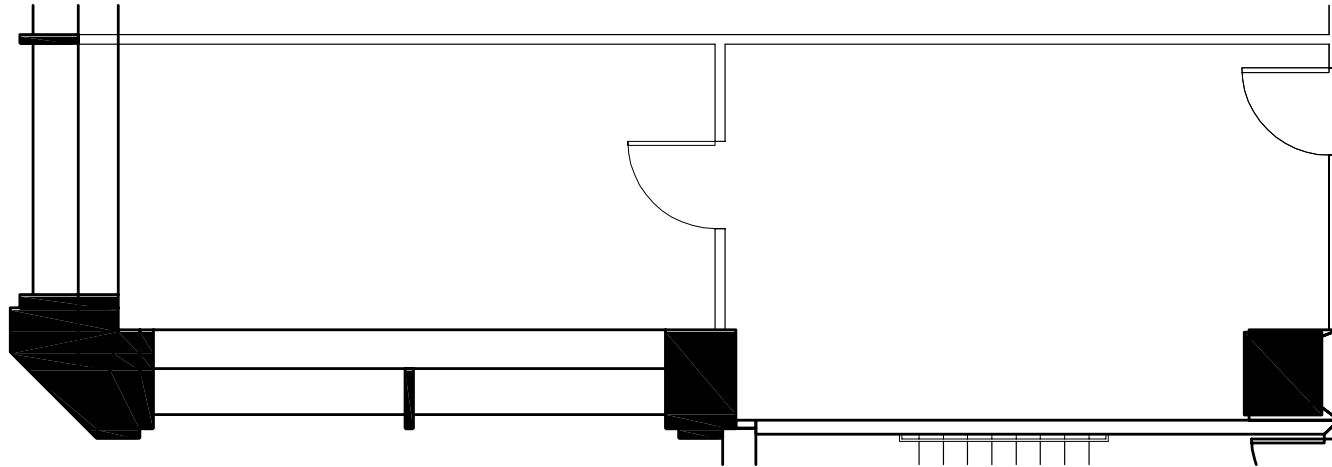


ONE KAISER PLAZA

LIVE. WORK. PLAY.



Suite 210 | ±721 SF

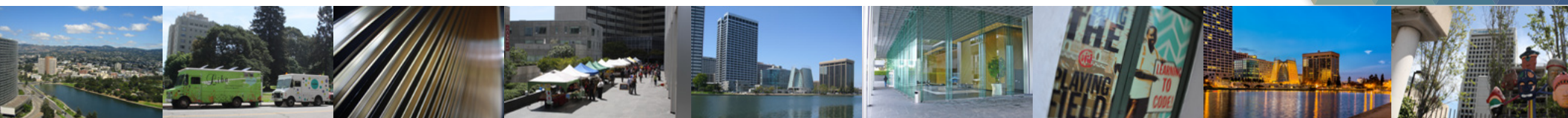
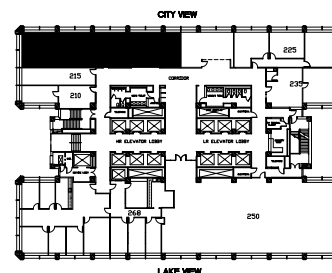
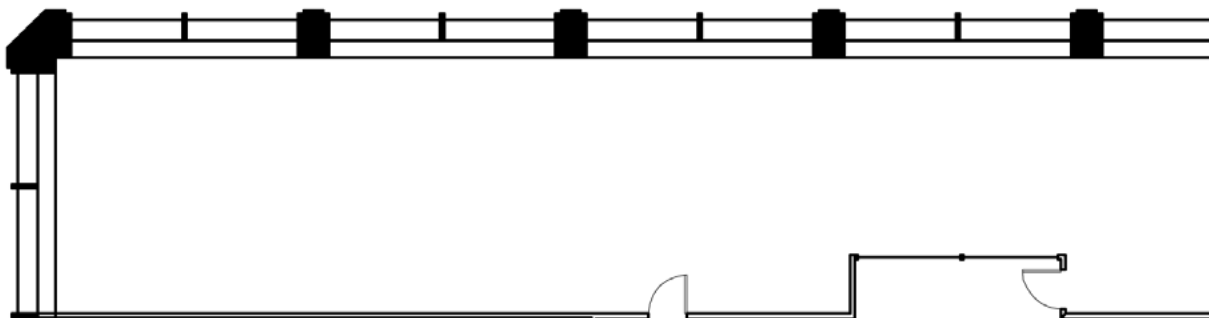


ONE KAISER PLAZA

LIVE. WORK. PLAY.



Suite 218 | ±2,315 SF

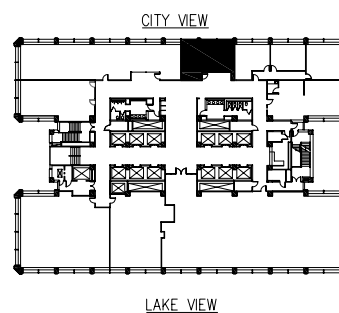
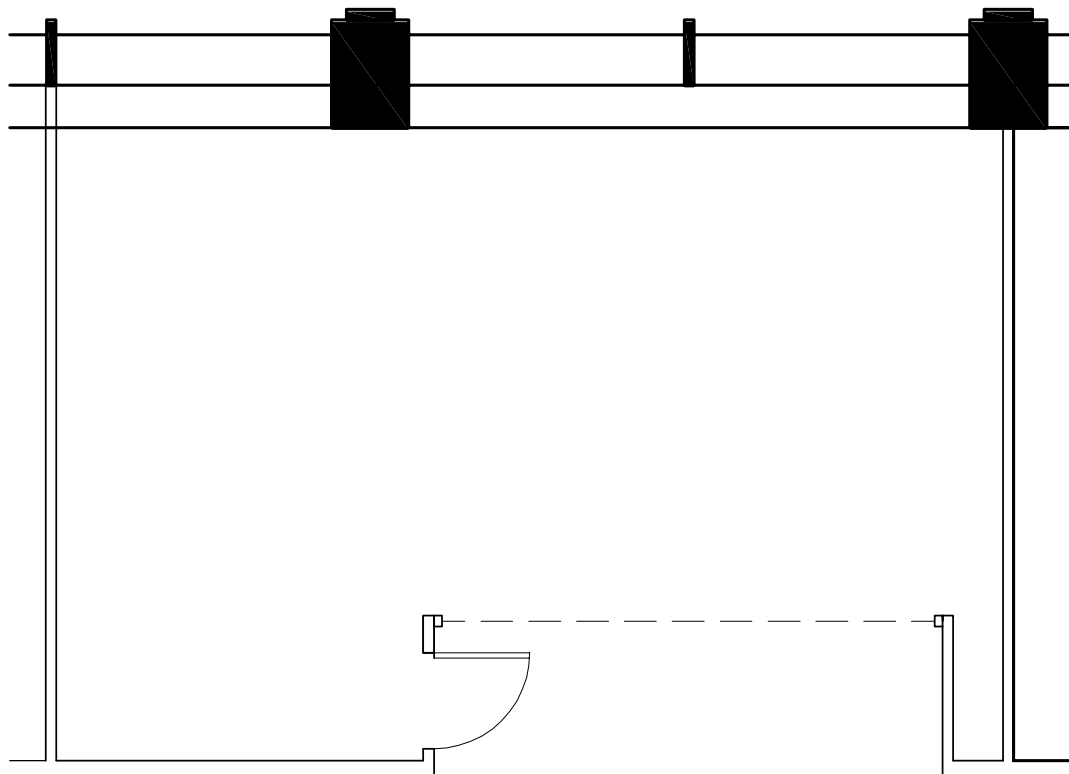


ONE KAISER PLAZA

LIVE. WORK. PLAY.



Suite 220 | ±873 SF

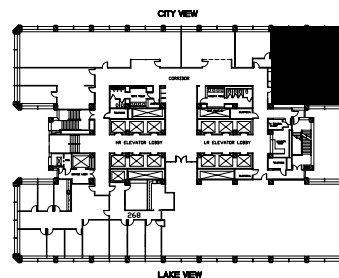
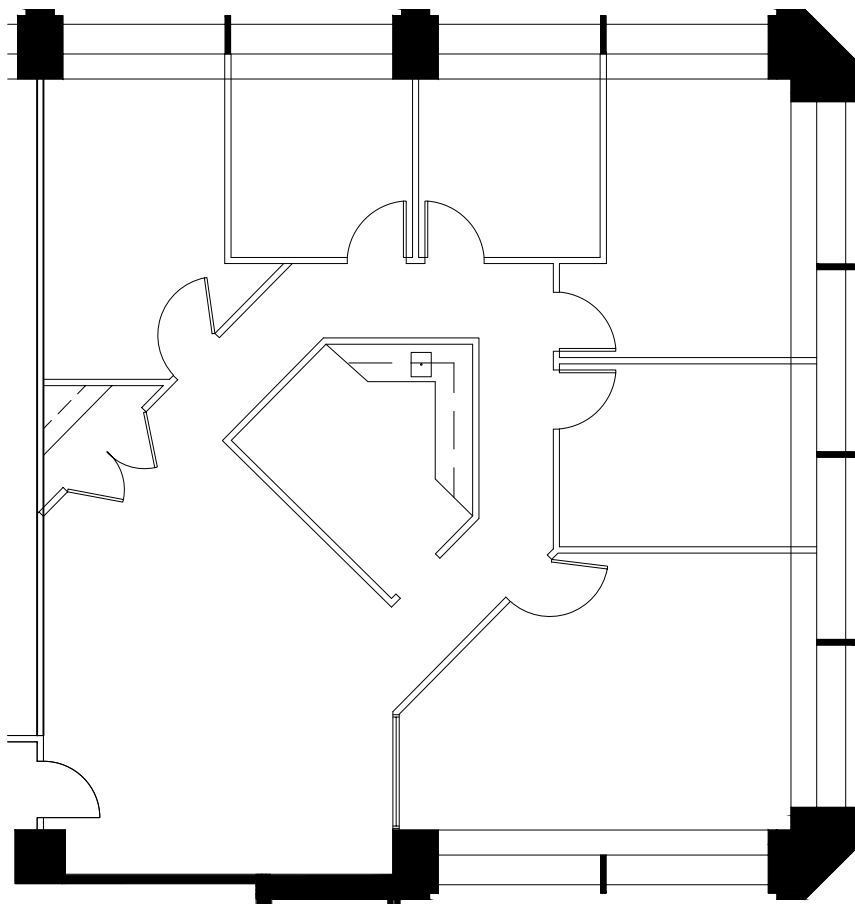


ONE KAISER PLAZA

LIVE. WORK. PLAY.



Suite 301 | ±2,208 SF

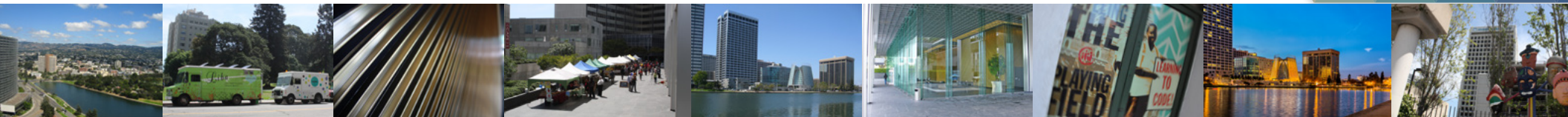
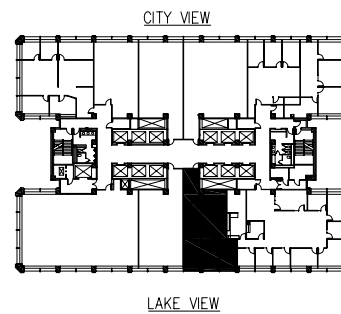
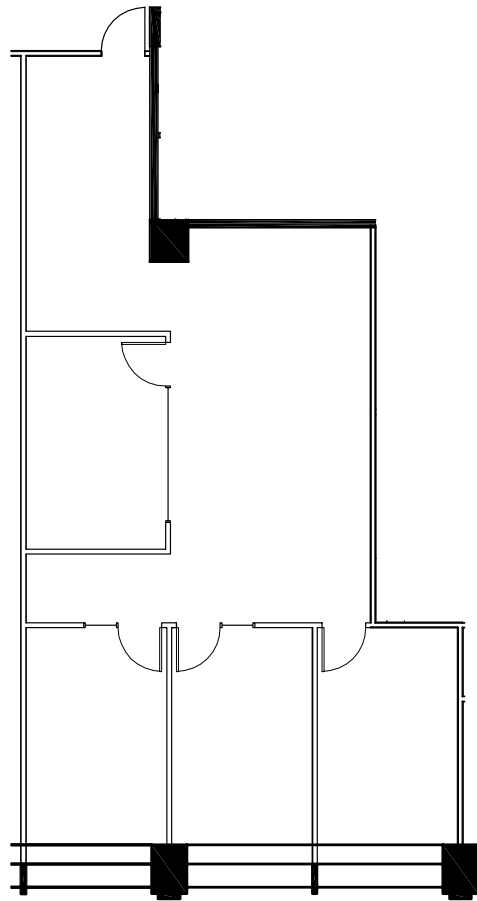


ONE KAISER PLAZA

LIVE. WORK. PLAY.



Suite 455 | ±1,530 SF

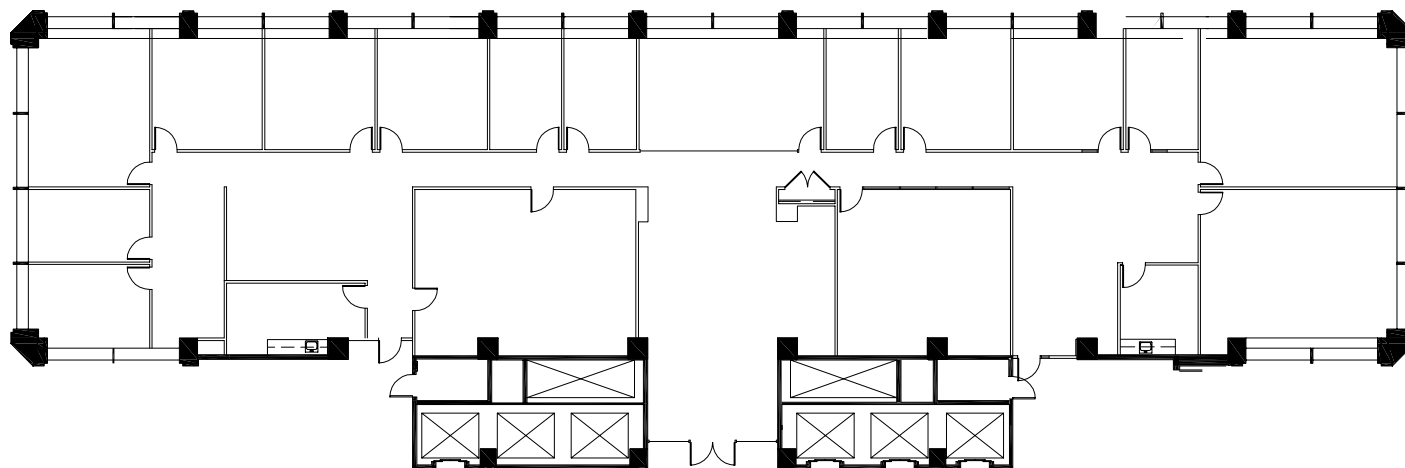


ONE KAISER PLAZA

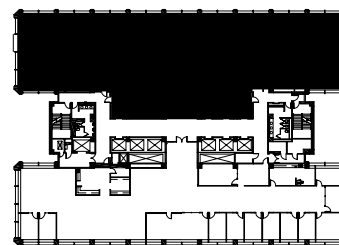
LIVE. WORK. PLAY.



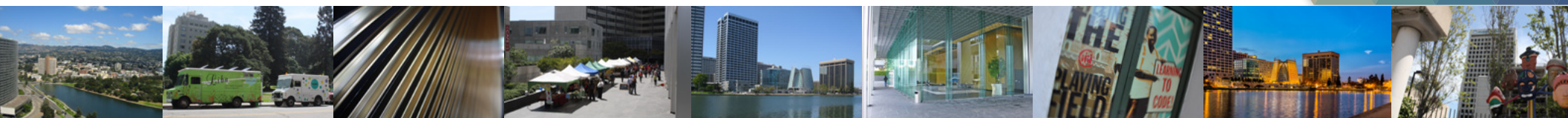
Suite 505 | ±9,838 SF



CITY VIEW



LAKE VIEW

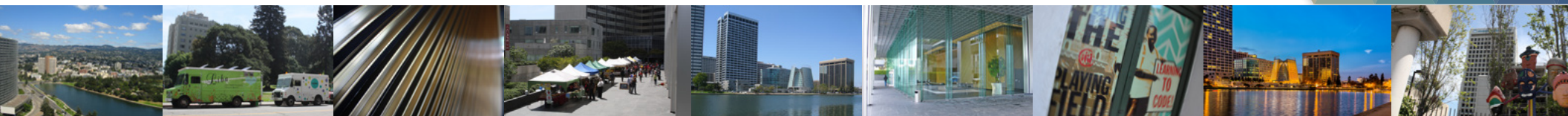
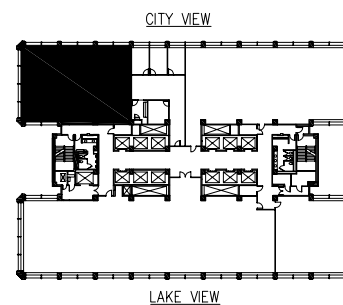
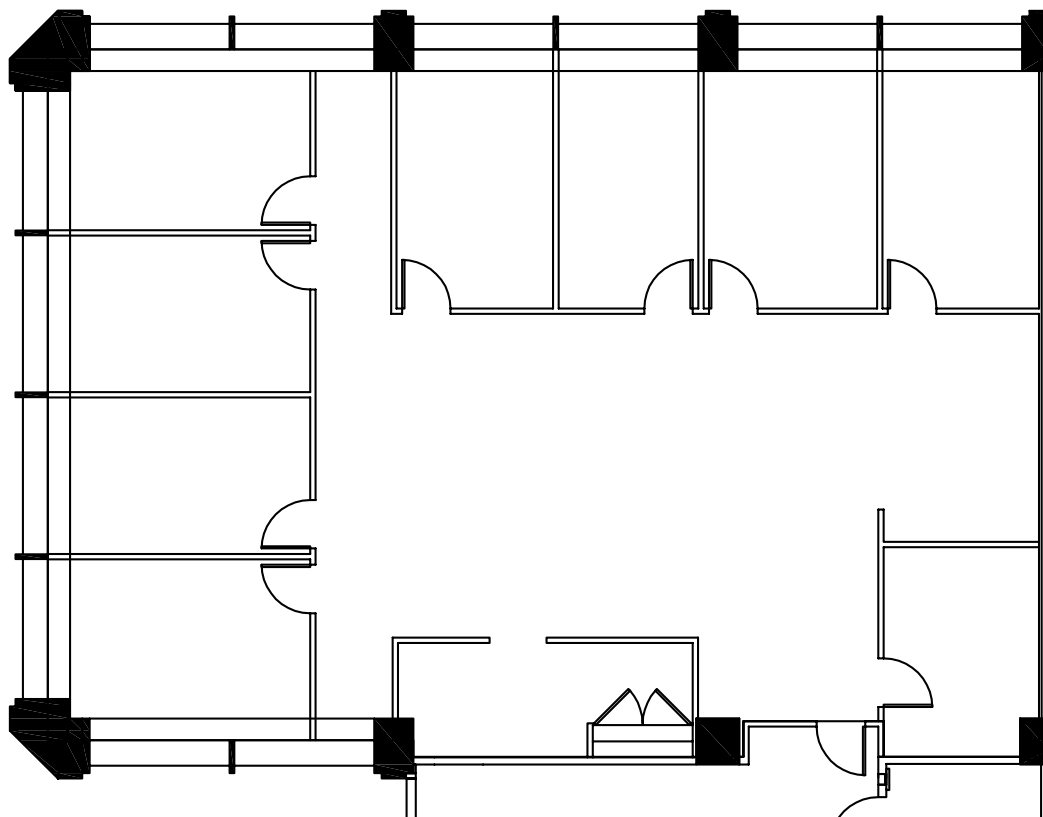


ONE KAISER PLAZA

LIVE. WORK. PLAY.



Suite 601 | $\pm 3,193$ SF

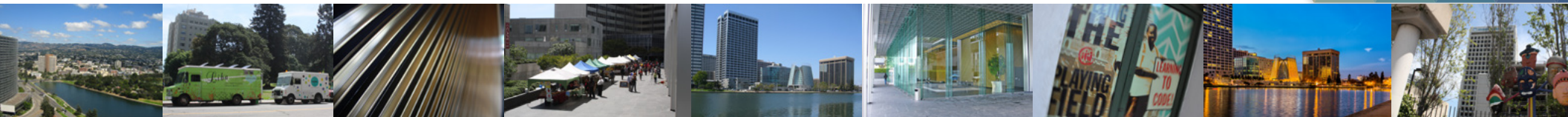
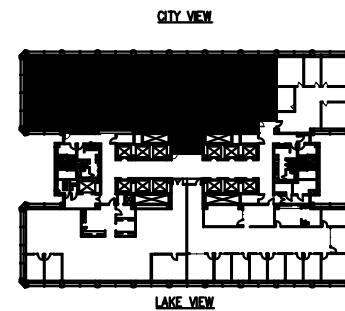
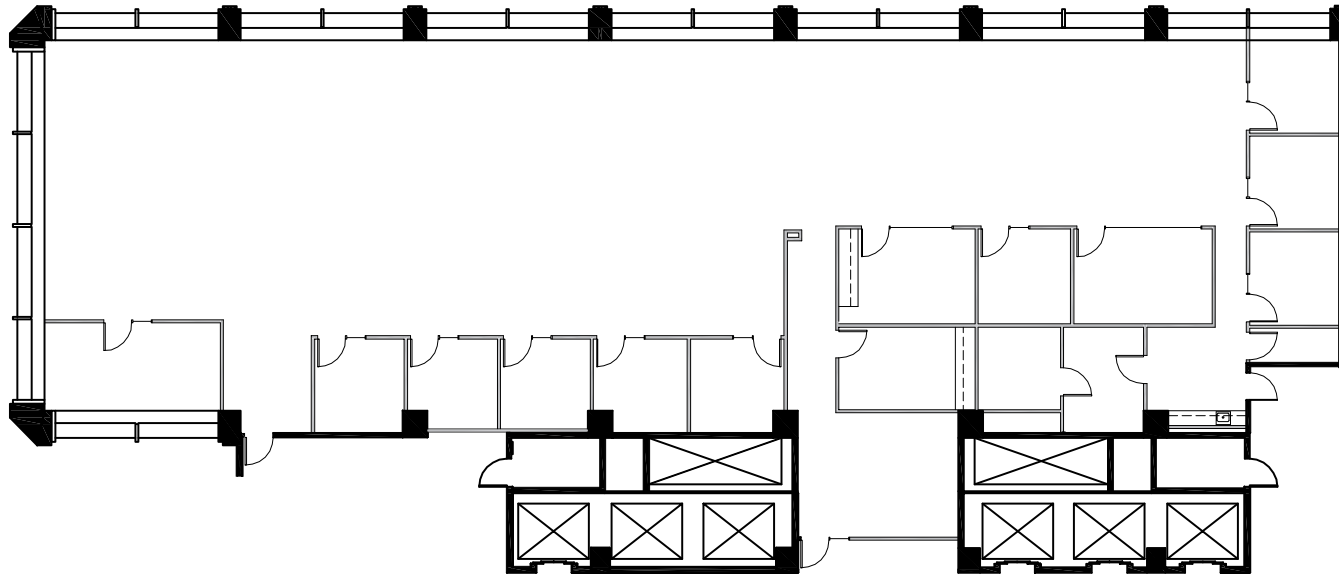


ONE KAISER PLAZA

LIVE. WORK. PLAY.



Suite 701 | ±7,637 SF

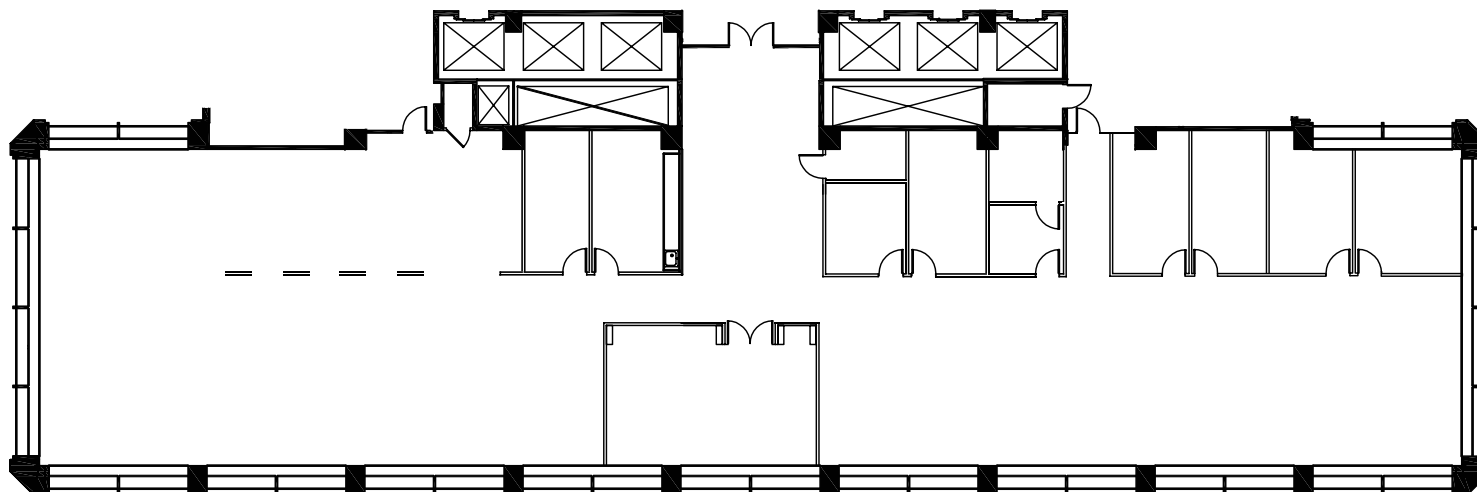


ONE KAISER PLAZA

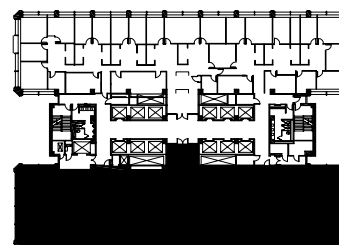
LIVE. WORK. PLAY.



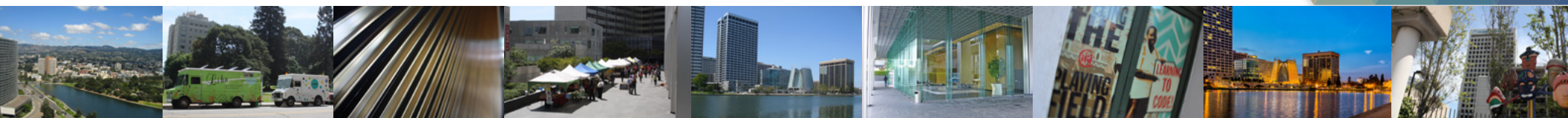
Suite 850 | ±9,813 SF



CITY VIEW



LAKE VIEW

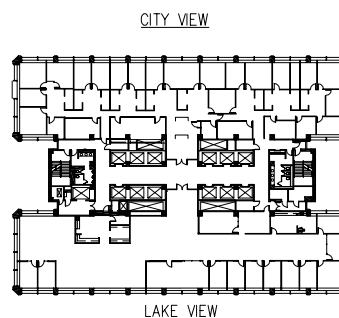
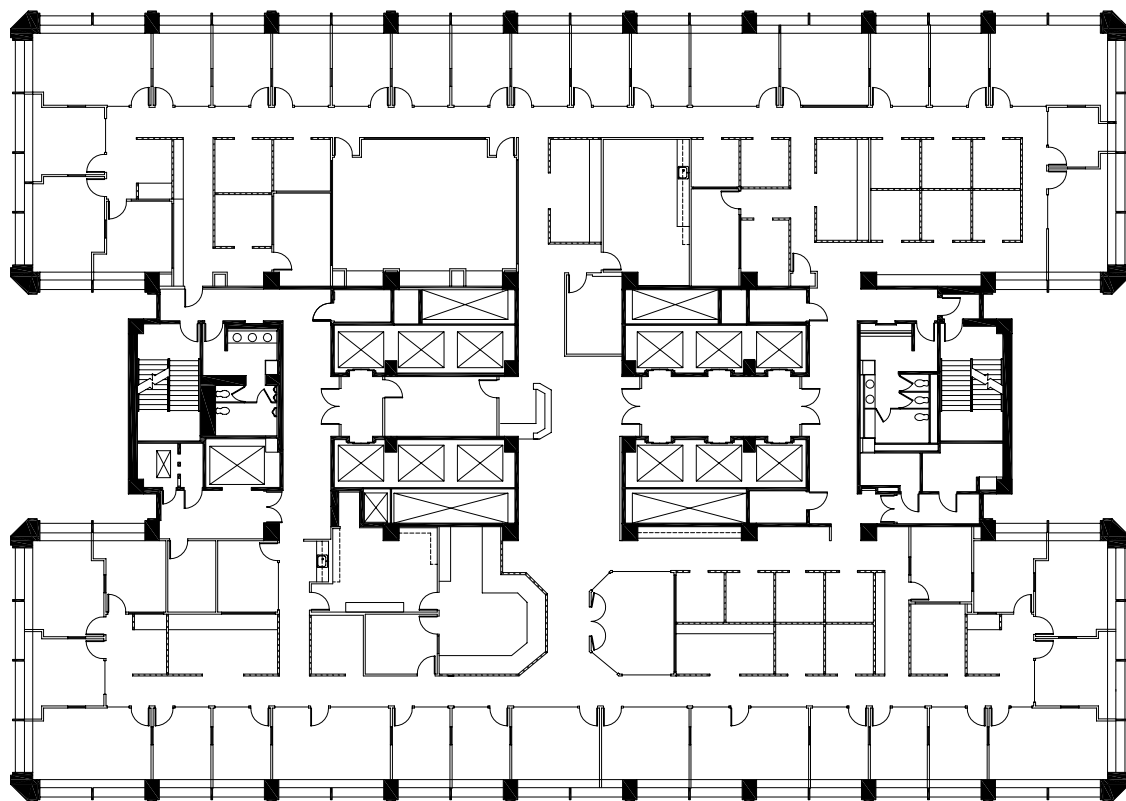


ONE KAISER PLAZA

LIVE. WORK. PLAY.



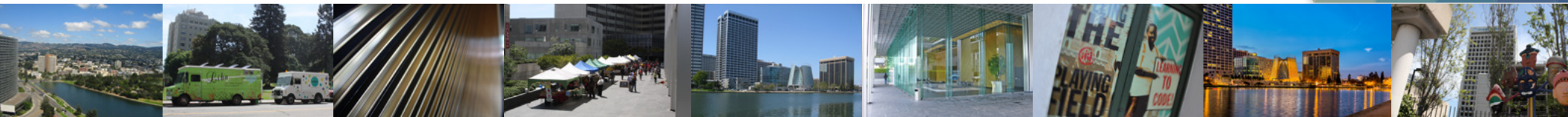
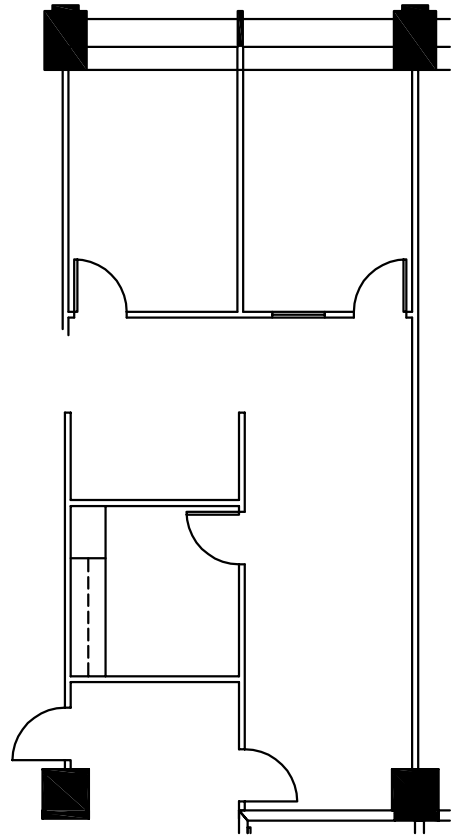
Suite 900 | ±19,651 SF



ONE KAISER PLAZA

LIVE. WORK. PLAY.

Suite 1015 | ±978 SF

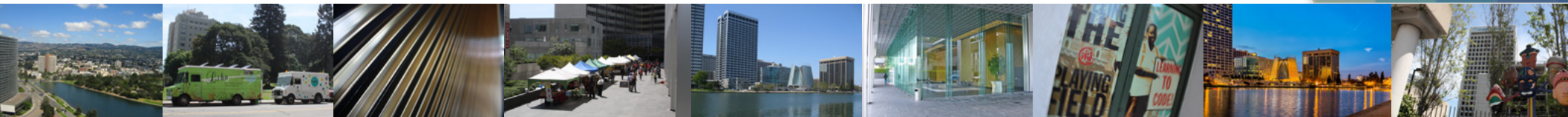
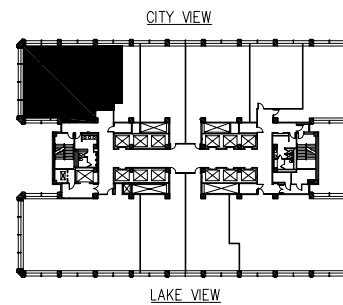
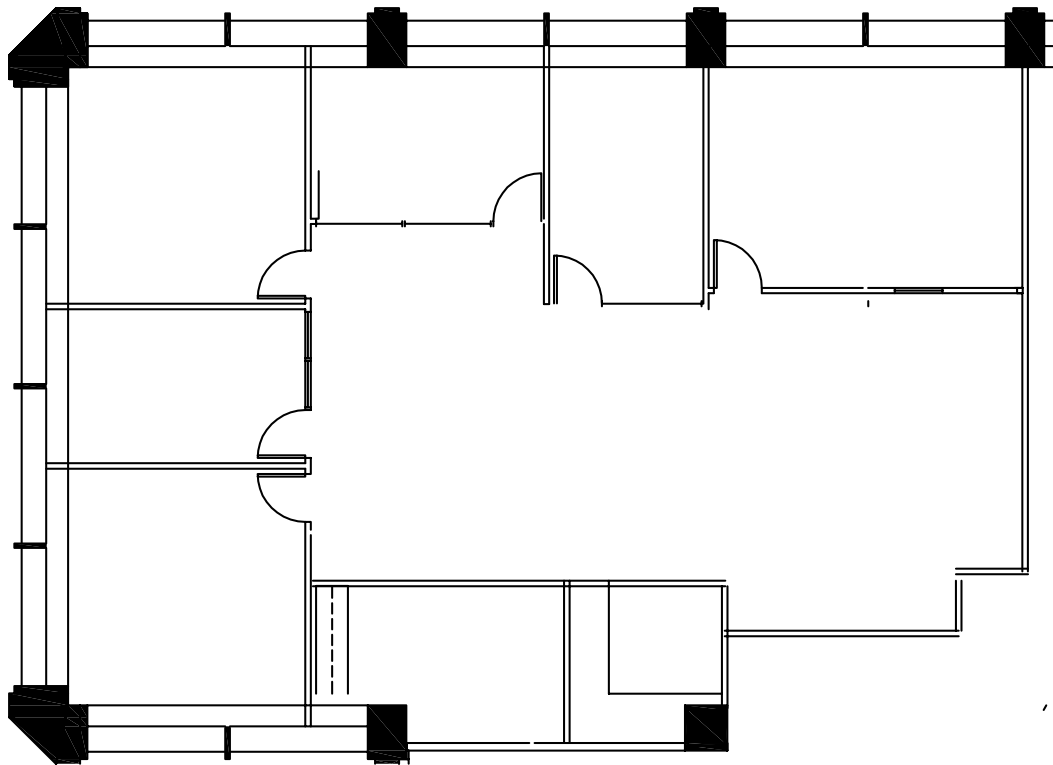


ONE KAISER PLAZA

LIVE. WORK. PLAY.



Suite 1305 | ±2,777 SF

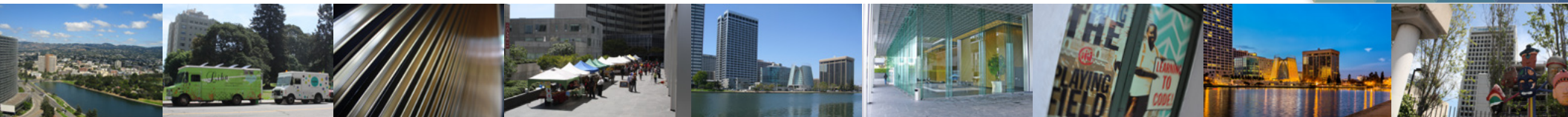
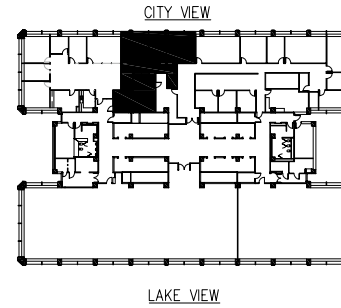
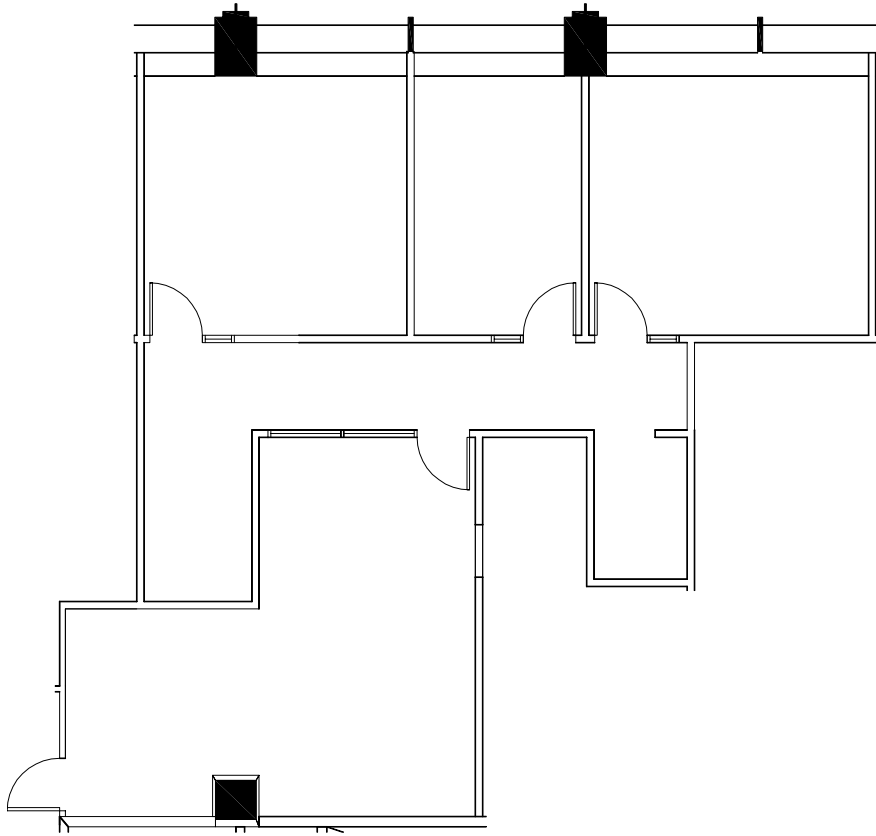


ONE KAISER PLAZA

LIVE. WORK. PLAY.



Suite 1310 | ±1,708 SF

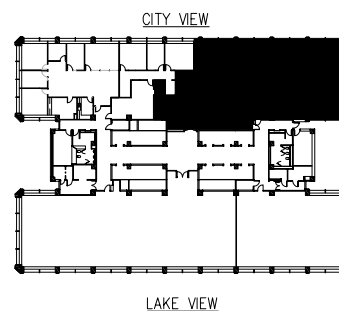
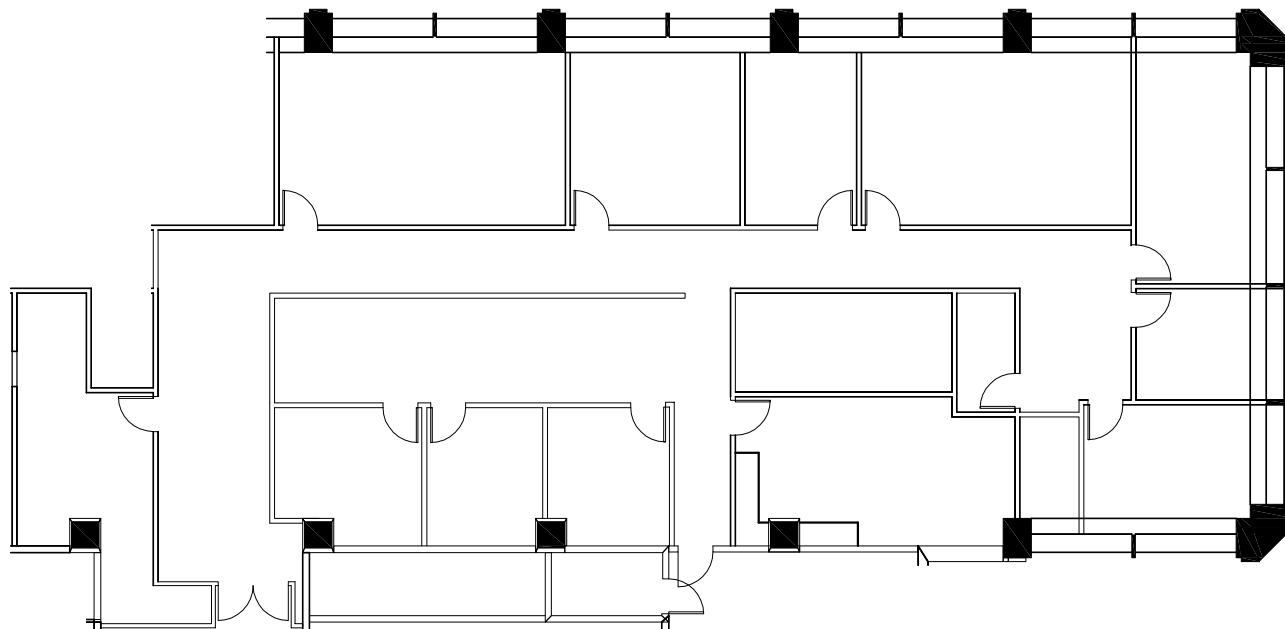


ONE KAISER PLAZA

LIVE. WORK. PLAY.



Suite 1333 | ±5,353 SF

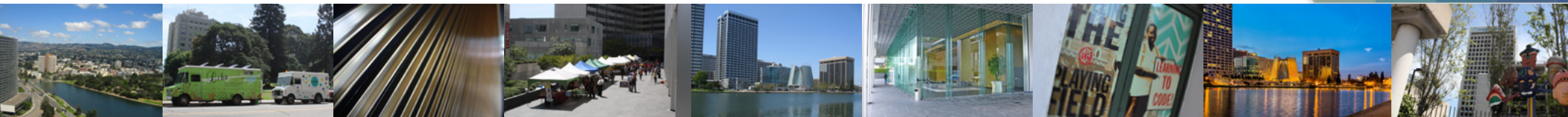
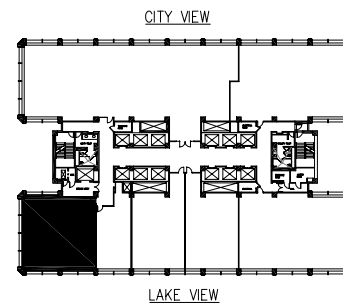
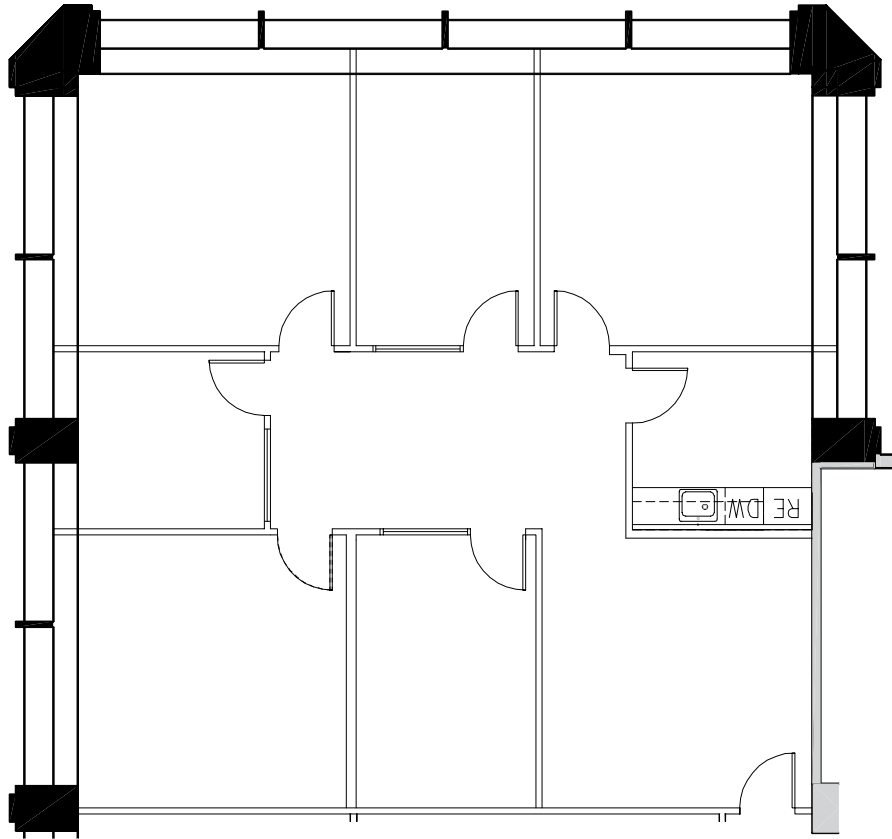


ONE KAISER PLAZA

LIVE. WORK. PLAY.

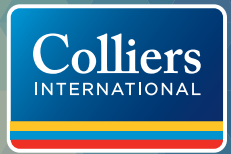


Suite 1485 | ±2,161 SF



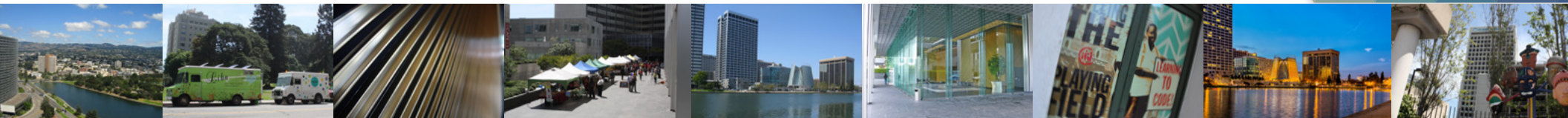
ONE KAISER PLAZA

LIVE. WORK. PLAY.



BUILDING SPECIFICATIONS

Constructed: 1970
Total Square Feet: ±515,070
Floors: 28
Floor Size: ±18,960 Square Feet
Elevators: 13 Cars
Parking: 1/1,000 Square Feet
Management: On-Site
Fiber: Provided by AT&T
Comments: Corner Lot
Close Proximity to Amenities
Energy Star Labeled



ONE KAISER PLAZA

LIVE. WORK. PLAY.

CONTACT INFORMATION

KEN MEYERSIECK
Senior Vice President
+1 510 433 5802
ken.meyersieck@colliers.com
CA License No. 00939525

TRENT HOLSMAN
Senior Vice President
+1 510 433 5859
trent.holsman@colliers.com
CA License No. 01449957

SCOTT GREENWOOD
Vice President
+1 510 433 5827
scott.greenwood@colliers.com
CA License No. 01330561



1999 Harrison Street, Suite 1750
Oakland, CA 94612
+1 510 986 6770
+1 510 986 6775 Fax
www.colliers.com

