



THE NEW CONTINENTAL TOWERS

1701 Golf Road
Rolling Meadows, Illinois



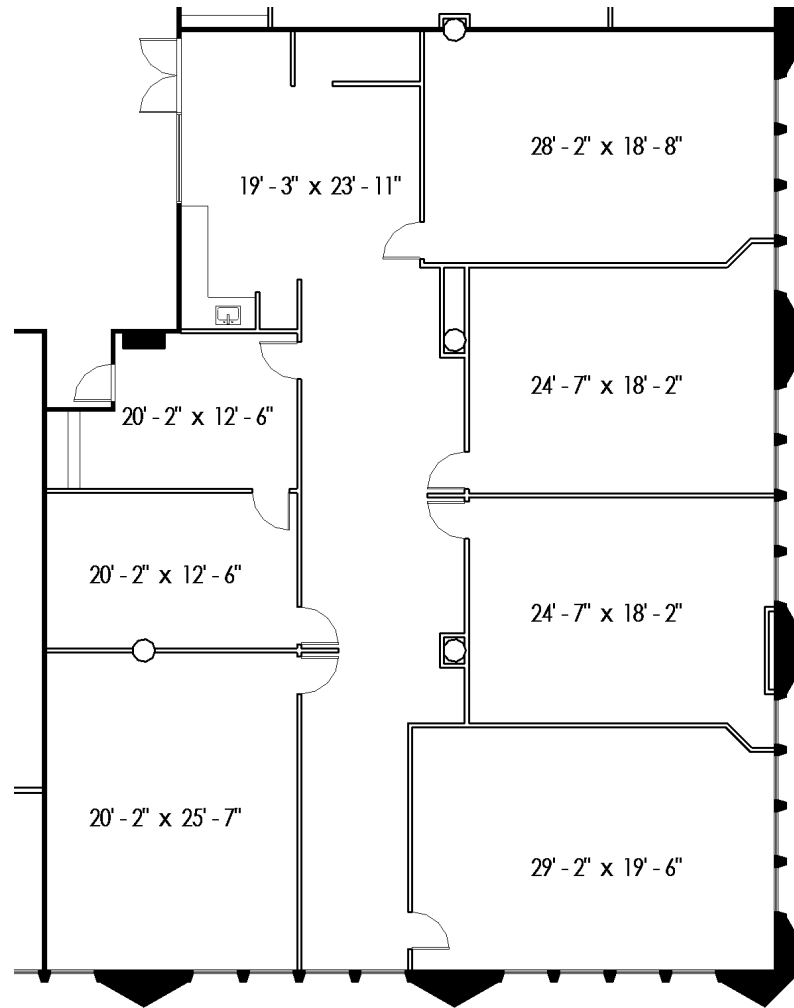
- Three Class A Office Buildings
Totaling 910,000 SF
- Access From Two 4-Way
Interchanges
- Great On Site Amenities
- New Local Ownership
- Major Common Area
Renovations Underway

For More Information Contact:

Dave Trumpy
(773) 308-1031
dtrumpy@glenstarproperties.com

Bill Debb
(847) 593-4438
billd@glenstarproperties.com

GlenStar



Tower III Suite 301 - 4,916 RSF

- Elevator lobby exposure
- Part of 37,628 sf contiguous block
- Southeast corner of floor
- Four large perimeter training rooms
- www.continental-towers.com

For a Virtual Tour Click Here:
 **VIEW THE SPACE**

