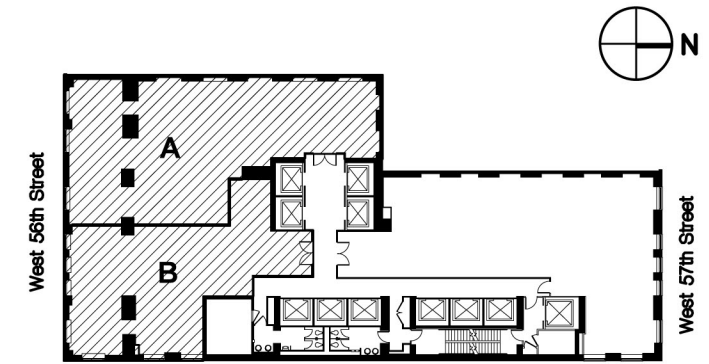


CARNEGIE HALL TOWER

A Landmark Office Building

152 WEST 57TH STREET . NEW YORK



KEY PLAN

SCALE: 1" = 50'



| | |
|---------------|------------------|
| UNIT A | 4,258 RSF |
|---------------|------------------|

| | |
|-------------------------|-----------|
| EXECUTIVE OFFICE | 2 |
| TYPICAL OFFICE | 1 |
| BENCHING | 16 |
| RECEPTION | 1 |
| TOTAL HEADCOUNT: | 20 |

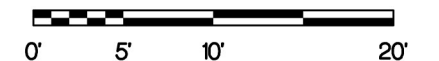
| | |
|-----------------|---|
| CONFERENCE ROOM | 2 |
| OPEN PANTRY | 1 |
| COPY AREA | 1 |
| COAT CLOSET | 1 |
| IT | 1 |

| | |
|---------------|------------------|
| UNIT B | 3,076 RSF |
|---------------|------------------|

| | |
|-------------------------|-----------|
| EXECUTIVE OFFICE | 1 |
| TYPICAL OFFICE | 2 |
| BENCHING | 10 |
| RECEPTION | 1 |
| TOTAL HEADCOUNT: | 14 |

| | |
|-----------------|---|
| CONFERENCE ROOM | 1 |
| OPEN PANTRY | 1 |
| COPY AREA | 1 |
| COAT CLOSET | 1 |
| IT | 1 |

SCALE:



Partial 8th Floor - 2 Tenants

3/31/14

Kohnke Associates, Inc.
665 Broadway
New York, NY 10012

Kohnke

Interior Design & Planning
Architecture
Project Management

T: 212 431 6400
F: 212 431 6405