



## THE NEW CONTINENTAL TOWERS

1701 Golf Road  
Rolling Meadows, Illinois



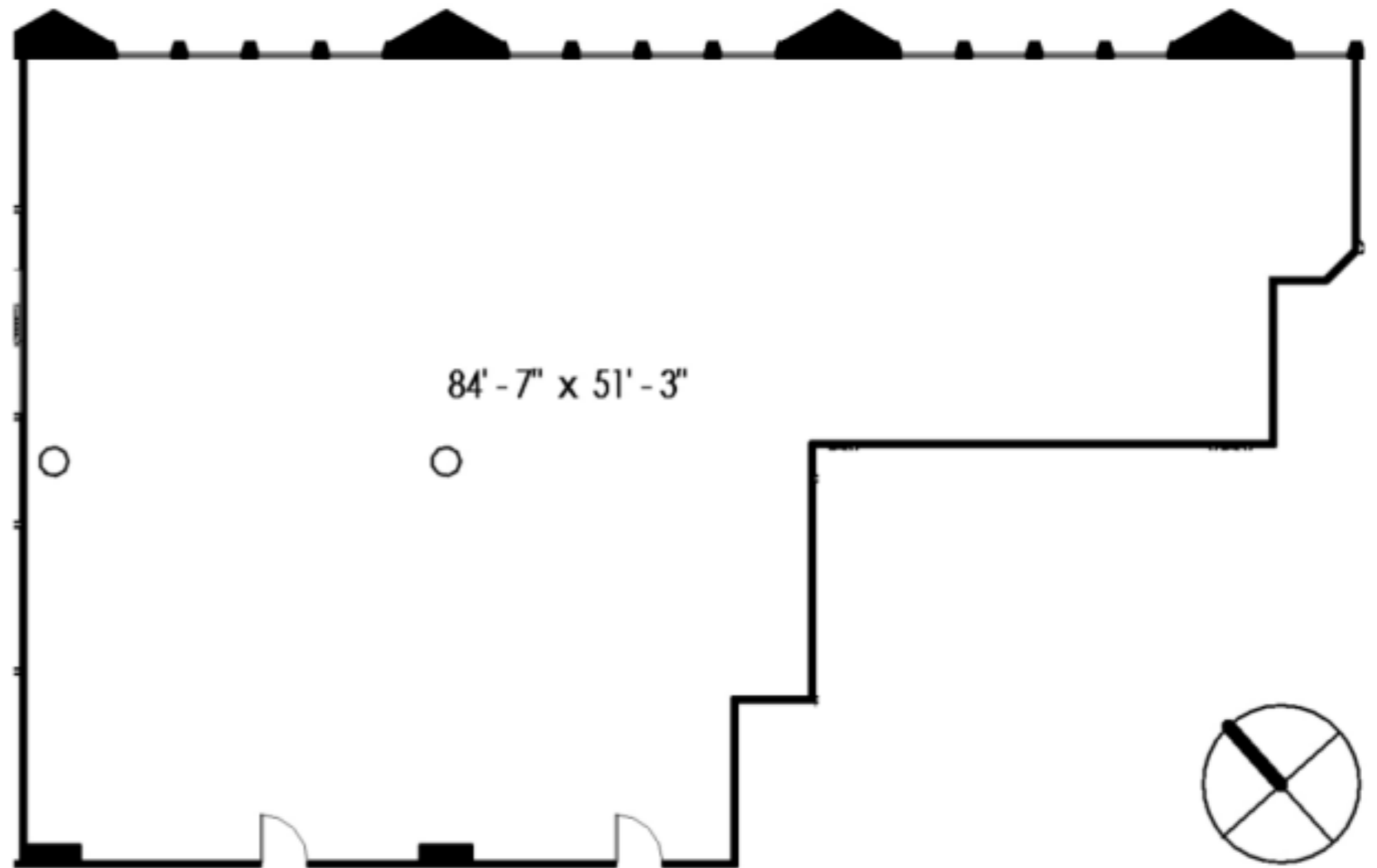
- Three Class A Office Buildings  
Totaling 910,000 SF
- Access From Two 4-Way  
Interchanges
- Great On Site Amenities
- New Local Ownership
- Major Common Area  
Renovations Underway

For More Information Contact:

Dave Trumpy  
(773) 308-1031  
dtrumpy@glenstarproperties.com

Bill Debb  
(847) 593-4438  
billd@glenstarproperties.com

# GlenStar



### Tower III Suite 605 - 3,966 RSF

- Open plan
- North side of floor
- [www.continental-towers.com](http://www.continental-towers.com)

