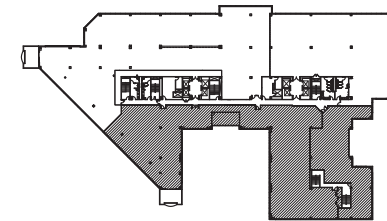
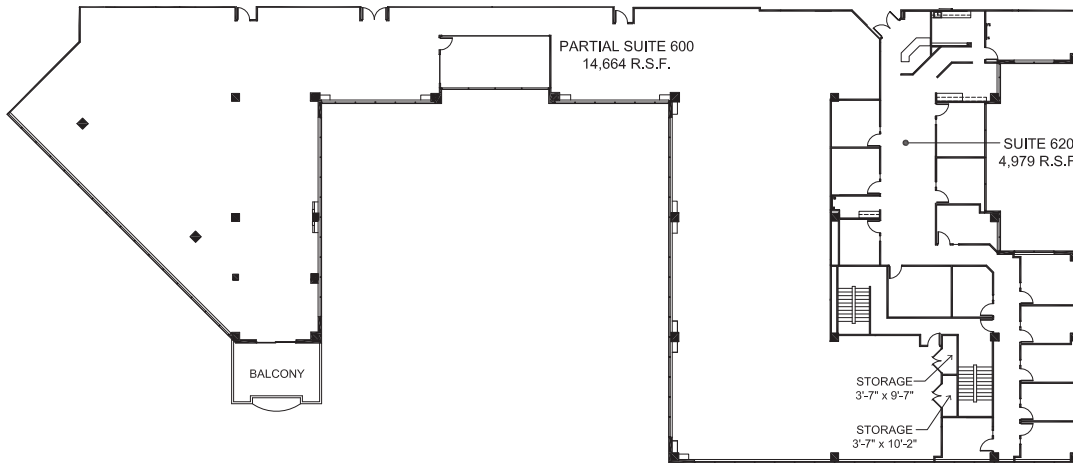




CALIFORNIA
PLAZA

PARTIAL SUITE 600 + 620 18,970 RSF



KEY PLAN

For more information or to schedule a tour, contact:

Kirk Beebe
Senior Vice President
+1 925 251 4611
kirk.beebe@cbre.com
Lic. 00854169

Phil Damaschino
First Vice President
+1 925 251 4630
phil.damaschino@cbre.com
Lic. 01729529

California Plaza | **WORK WITH MOMENTUM**

5-Star Service
WORLDWIDE™

CBRE

2121 North California Boulevard | Walnut Creek, CA 94596