

# Intra-Oral Sensor

**Superior Image Quality • Durable • Streamlined Workflow**

**EzSensor** is the industry leading intra-oral sensor, offering superior diagnostic images that are essential to successful implant surgery and endodontic treatment. Featuring unparalleled durability and image quality, EzSensor delivers speed and efficiency while keeping patients comfortable.



## IMAGE QUALITY

EzSensor uses Hybrid CMOS technology (one-chip trigger, switching, redundancy signal), providing the most distinct images possible. This high-resolution technology, combined with noise and artifact suppression, provide clear and consistent results— and a more exact diagnosis.

## STREAMLINED WORKFLOW

EzSensor uses USB 2.0 technology for unparalleled connectability to any PC in the clinic, and the user-friendly EasyDent software offers rapid image acquisition. With its unmatched simplicity and reliability, EzSensor's real-time transmission drastically shortens processing time for a diagnostic image and eliminates the hassle of developing film.

## PATIENT COMFORT

EzSensor's rounded-off edges and multiple size options maximize patient comfort.

## DURABILITY

The rugged, aluminum case construction of EzSensor minimizes sensor damage from accidental shocks or drops. The patented cable connection structure maintains cable integrity during frequent and extreme bending.



The Vatech  
Dental Imaging  
Equipment Family



Master



PaX-Duo3D



PaX-Reve3D



PaX-Primo



PaX-500



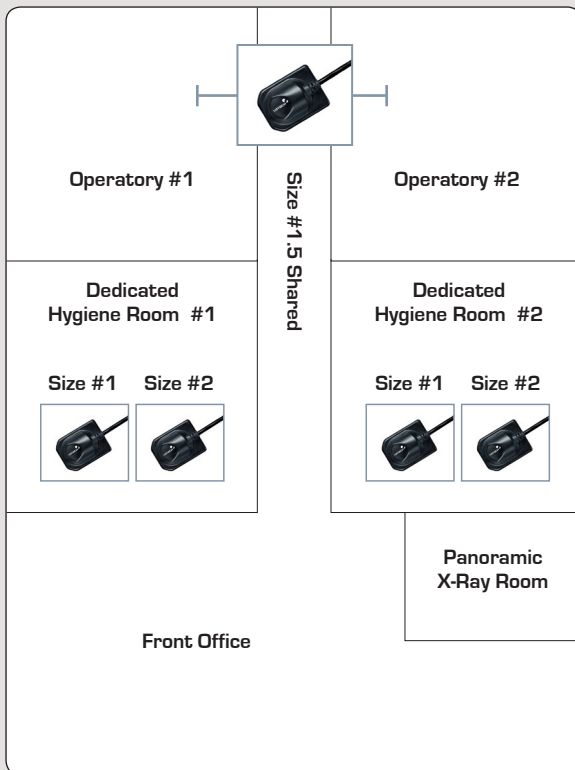
EzSensor

Available in 3 sizes to maximize patient comfort.

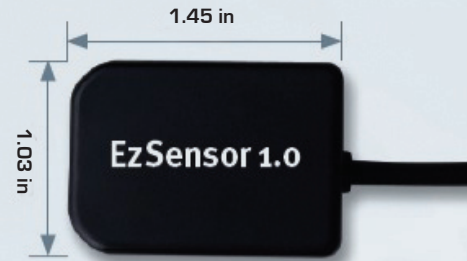
Detector Structure	Low Noise Hybrid CMOS
Dimension (W x L x T)	<b>EzSensor 1.0</b> 1.03 x 1.45 x 0.19 inch
	<b>EzSensor 1.5</b> 1.15 X 1.52 X 0.19 inch
	<b>EzSensor 2.0</b> 1.24 x 1.69 x 0.19 inch
Pixel Pitch	0.0014 inch
Active Pixel Array	686 X 944 pixels (0.94 x 1.30 inch)
Dynamic Range	4096
Signal to Noise Ratio	>37dB

These specifications are subject to change without prior notice.

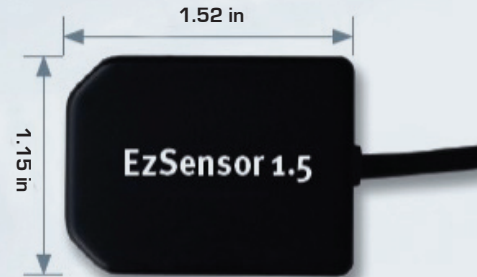
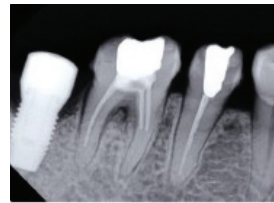
**Organized Workflow Efficiency without Diagnostic Compromise**



EzSensor 1.0



EzSensor 1.5



EzSensor 2.0

