

Visualix® eHD



Ergonomics + High Definition.
The Winning Formula For Sensor Design.

[Cone Beam 3-D Imaging Systems](#)

[Panoramic X-ray Systems](#)

[Intraoral X-ray Systems](#)

[☞ Digital Intraoral Sensors](#)

[Digital X-ray Phosphor Plates](#)

[Intraoral Cameras](#)

[Imaging Software](#)

GENDEX®
Imaging Excellence Since 1893



Moving past the age of film-based x-rays is an easy step with Gendex Visualix eHD intraoral sensors. Designed with both you and your patients in mind, the smooth edges and rounded corners create complete comfort for your patient while simplifying sensor positioning. Utilizing the latest CCD-technology, the eHD delivers instant high resolution images of truly amazing clarity and detail.

Ergonomics and high definition — the formula for your intraoral sensor system.

➔ Outstanding Ergonomics

- Unique drop-like shape with smooth edges and rounded corners for comfort
- Follows the anatomical shape of the oral cavity
- Certified Class II medical device

➔ High Definition Radiography

- Instant acquisition of high quality digital images
- Utilizes the latest CCD-technology
- Columnar microstructure drives light directly to the CCD surface

➔ Optimized Workflow

- Eliminates the need for film processing equipment in your practice
- Auto-Ready function allows for x-ray capture without initiating through the imaging software
- USB 2.0 compatible interface

Visualix® eHD



*Rounded corners
for maximum
patient comfort*

*Available in two sizes to
correspond with the most
commonly used film sizes*

*Visualix eHD Size 1:
37.5 x 25.5 mm
1590 x 1024 pixels*

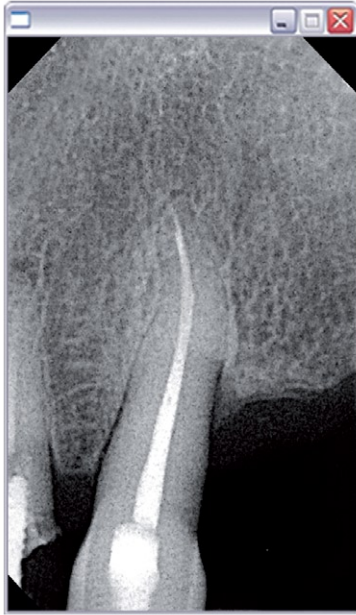
*Visualix eHD Size 2:
40.5 x 33 mm
1744 x 1384 pixels*



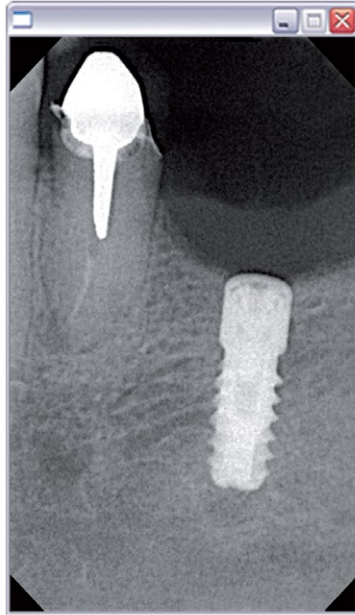
*Featuring smooth edges
and rounded corners for easy
positioning and comfort*

Outstanding Ergonomics

The Gendex Visualix eHD is a unique system designed to simplify positioning of the intraoral sensor in the oral cavity. Its smooth edges and rounded corners ensure maximum patient comfort. With Visualix eHD, you can significantly reduce the x-ray dose received by the patient compared to film, safeguarding the patient and practice staff.



Easy and simple positioning of the sensor where space is limited allows accurate visualization of endodontic detail and provides real-time monitoring of treatment progress



High definition images are vital to correctly assess the level of integration between implants and the surrounding bone structure



The eHD ergonomic shape permits correct positioning at the most distal parts of the oral cavity – avoiding image distortions in the periapical area and occlusal plane



Highly detailed, digital images for enhanced diagnostic capabilities and convenient patient education

High Definition Radiography

Utilizing the latest CCD sensor technology, the Visualix eHD system delivers real-time images of truly amazing clarity and detail for all your diagnostic and treatment needs. Designed with a Caesium Iodide scintillator, grown vertically on a carbon layer, its columnar microstructure drives light directly to the CCD surface – reducing loss and providing sharper image quality.



The convenient plug-and-play Visualix eHD system takes full advantage of the connectivity features and high speed data transmission of USB 2.0



Wall mount accessories provide seamless integration into your practice

Optimized Workflow

Converting to a digital workflow eliminates the need for film development equipment in the practice. Digital images are stored electronically on your PC, reducing the need for paper records and making x-ray sharing easier for insurance or referral uses.

The Visualix eHD system is USB 2.0 compatible for faster image acquisition. Its unique Auto-Ready feature automatically recognizes the presence of the x-ray emissions to start image acquisition without initiating the capture through the imaging software.

Technical Specifications

Gendex Visualix® eHD

	Universal Size (Size 1)	Large Area (Size 2)
External Dimensions	37.5 mm x 25.5 mm	40.5 mm x 33 mm
Sensor Technology	CCD	CCD
Scintillator Technology	CsI (Columnar microstructure)	CsI (Columnar microstructure)
Image Resolution	25.6 lp/mm	25.6 lp/mm
Image Pixel Size	19.5 µm	19.5 µm
Image Size	1590 x 1024 pixels	1744 x 1384 pixels
Maximum Gray Levels	4096	4096
Sensor Cable Length	10 feet (3 meters)	10 feet (3 meters)
Warranty	2 years	2 years

Visualix eHD is compatible with both AC and DC technology x-ray generators with kV values in the range of 50 – 70 kV. Visualix eHD permits significant reduction of the exposure times (typically under 80 ms). The Visualix eHD system complies with the European Community Directive 93/42/EEC regarding medical devices and with the standards IEC 601.1 (1988), Amendment Nr. 1 (1991), Amendment Nr. 2 (1995), IEC 601.1.1 (2000), IEC 601.1.2 (2001), IEC 601.1.4 (1996), Amendment Nr. 1 (1999). Data subject to change without notice.

PC Requirements	Minimum	Recommended
CPU Speed	300 MHz Pentium® II	1 GHz Pentium® 4
Operating System	Microsoft® Windows 98® SE	Microsoft® Windows XP® Pro
Memory	128 MB	512 MB
Hard Disk	20 GB	60 GB
Display Settings	800 x 600 at 24 bit true color	1024 x 768 at 32 bit true color
Video RAM	2 MB	8 MB
Monitor	S-VGA with 0.28 mm dot pitch	S-VGA with 0.25 mm dot pitch
USB Port	USB 1.1	USB 2.0
USB Power Supply	5 V DC, 500 mA	
Standards	In compliance with the UL/IEC/EN 60950 standard	



Gendex Dental Systems
901 West Oakton Street
Des Plaines, IL 60018 U.S.A.
Tel 1-888-275-5286
www.gendex.com