

**The PreXion3D Excelsior CBCT Scanner is the evolution of our original flagship product designed for dentists who demand the highest diagnostic clarity and detail. Uses include but are not limited to: implant placement, bone quality studies, pathology, periodontics and endodontics. It is compatible with all DICOM compliant third-party implant surgical guide and CAD/DICOM merging software programs.**

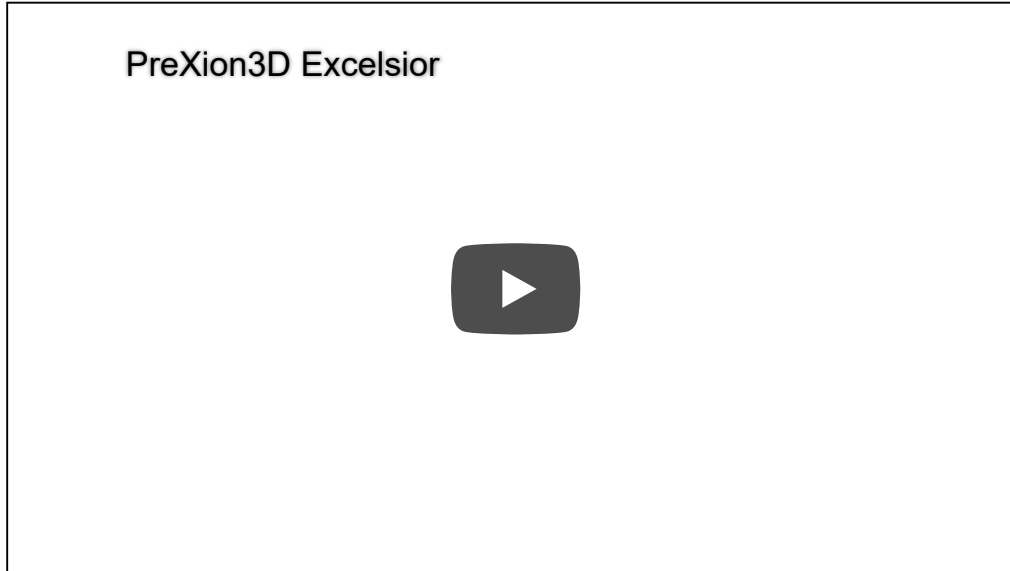
### **BUNDLED PREXION 3D VIEWER SOFTWARE**

All PreXion3D CBCT scanners include The PreXion3D Viewer software at no additional charge. It contains easy modules for evaluating dedicated 2D Panoramic, 2D Cephalometric, and 3D images. PreXion provides the clinician with the most accurate assessment of the bone and surrounding anatomy while making 1:1 exact measurements. This assures optimal implant placement without the superimposition of tissue or projection distortion compared to conventional panoramic systems. PreXion3D reconstructs to DICOM 3.0 format and is compatible with major third-party surgical planning software systems.

- Better diagnose patients with more detail and clarity



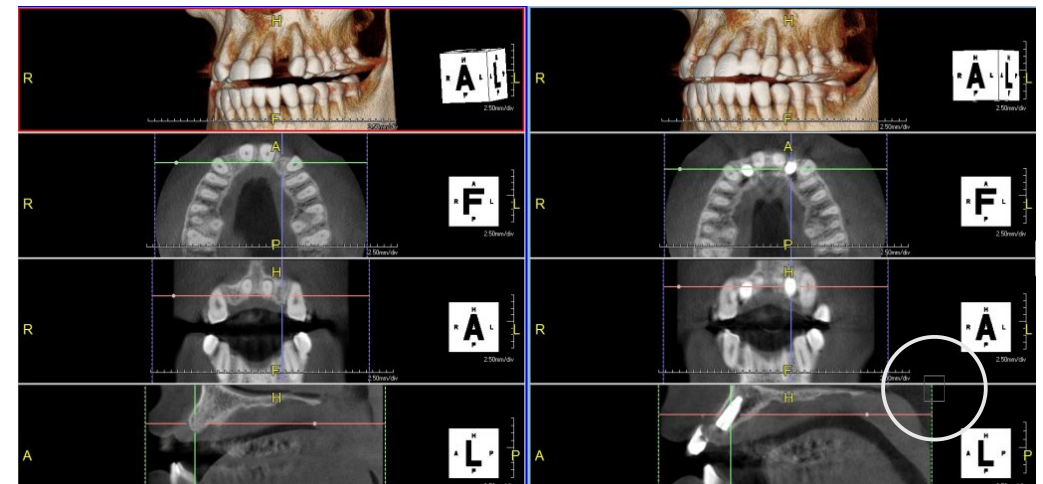
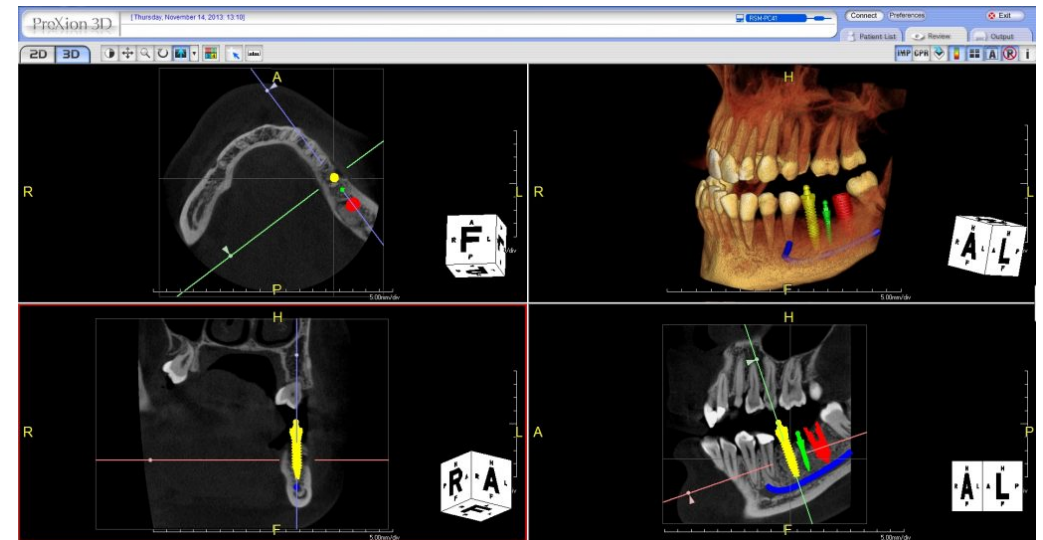
- Present cases more confidently, increase acceptance
- Create the wow factor with patients



## SOFTWARE FEATURES

- Multi-data – Load multiple patient scans on a single screen. Synchronize pre- and post-operative scans and detect differences, slice-by-slice.
- Patient Education and Presentation – Quickly capture 3D animated video clips for patient education, case acceptance and lecture presentations. Increase case acceptance through better patient understanding.
- Collaborative Tools – Automatically save 3D image reports to MS Word template and attach to patient's practice management record. Collaborate with referring dentists by burning a patient disc with sample viewer. Capture and email images quickly.
- Remote Access – Work on cases from home or a satellite office without long connectivity delays. Lead virtual online treatment planning meetings remotely with PreXion3D.
- Thin Client Server – PreXion3D CBCT scanners do not require computer hardware upgrades. It does not slow down network bandwidth like other CBCT scanners.
- Implant Library – Use our extensive library or customize your own library.
- Save Scenes – Save your case workup as a scene or create multiple saved scenes with a single scan.

## SOFTWARE IMAGES



- 3D Templates – Save time with over 20 pre-made 3D volume rendering templates or customize your own.

- Slab and Cutting – Slab Feature allows the clinician to see inside structures while rotating the 3D image. Cut away structures to see exactly what is pertinent to your study.

### CLINICAL APPLICATIONS

- Implant placement surgery
- Endodontics
- Periodontics
- Oral-maxillofacial surgery
- TMJ
- Pathology
- Impacted and supernumerary teeth
- DICOM export for implant surgical guides & CAD/CAM integration

### PRODUCT COMPARISON

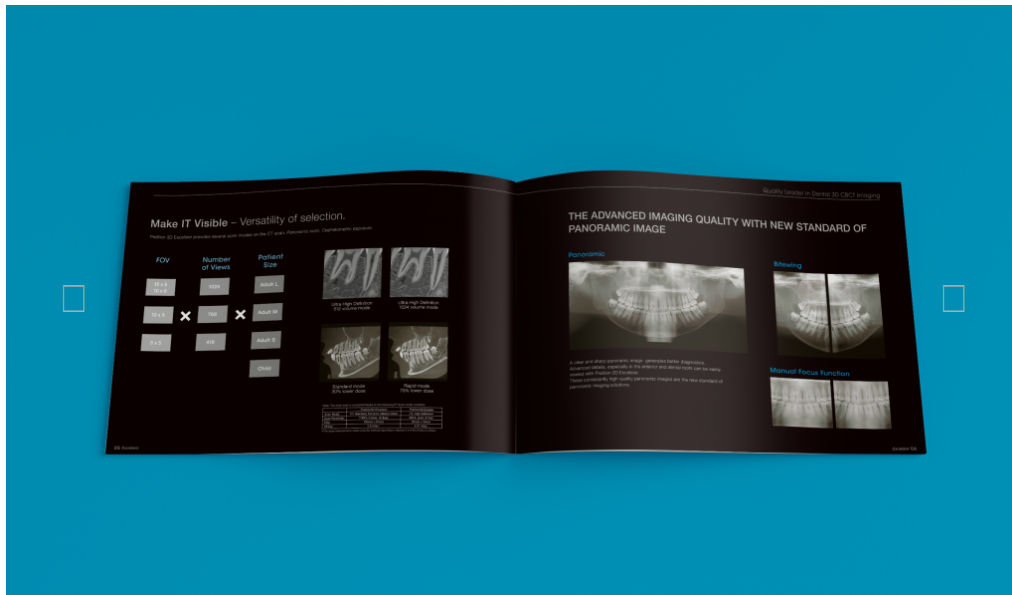
PreXion3D Excelsior PRO, Plus & Ex CBCT Comparison			
CAPABILITY	PRO	Plus	Ex
<b>VOLUME SIZE</b>			
1,024 x 1,024 x 816	✓	✓	✗
Volume Size – 512 x 512 x 512	✓	✓	✓
<b>FIELD OF VIEW</b>			
50X50mm FOV	✓	✓	✓
100X50mm FOV	✓	✓	✓
100x80mm FOV	✓	✓	✗
150x80mm FOV	✓	✗	✗
<b>CT SCAN MODE</b>			

- Airway analysis

[READ MORE](#)

### HIGHLIGHTS

- Accurate 360-degree gantry rotation
- 260-1,024 projected views
- Dedicated 2D pan mode option
- Clearest detail with 0.3mm focal spot & 0.08-0.2mm voxel



Standard	✓	✓	✓
Rapid	✓	✓	✓
Child	✓	✓	✓
High Resolution	✓	✓	✗
High Contrast	✓	✗	✗
CT-TMJ	✓	✓	✗
CADCAM	✓	✗	✗
ENT	✓	✗	✗
<b>VIEWER STUDY LOAD</b>			
2GB (4 Studies in 512 Volume Scan Mode)	✗	✓	✓
3.2GB (10 Studies in 512 Volume Scan Mode)	✓	✗	✗
<b>WARRANTY</b>			
7 Year Parts / 1 Year Labor	✓	✗	✗
5 Year Parts / 1 Year Labor	✗	✓	✗
3 Year Parts / 1 Year Labor	✗	✗	✓



[DOWNLOAD BROCHURE](#)

## SCAN MODE

Standard Mode	9.6 seconds
Rapid Mode (Lower Dose)	5.2 seconds
High Definition Mode (HD)	12.8 seconds
Ultra High Definition Mode (UHD)	17.9 seconds, 23.6 seconds
Wide Mode	9.6 seconds
CT-TMJ Mode	5.2 seconds x 2
CAD CAM Mode	17.9 seconds
Panoramic Standard Mode	10 seconds

## SPECIFICATIONS

Device Type	CBCT+2D Panoramic + Cephalometric (Optional)
Field of View (DxH)	150mm X 80mm; 100mm X 80mm; 100mm x 50mm; 50mm x 50mm; 150mm x 130mm (Optional)
CBCT Sensor	CsI FPD 16 bits, Cephalo FPD 14bits
X-ray Tube Voltage	60–110kV
Focal Spot	0.3mm x 0.3mm
Voxel Size	0.08–0.2mm
Patient Position	Standing; wheel chair accessible
Included Computers	Single Console & Viewer Computer (Network Client is available)

