

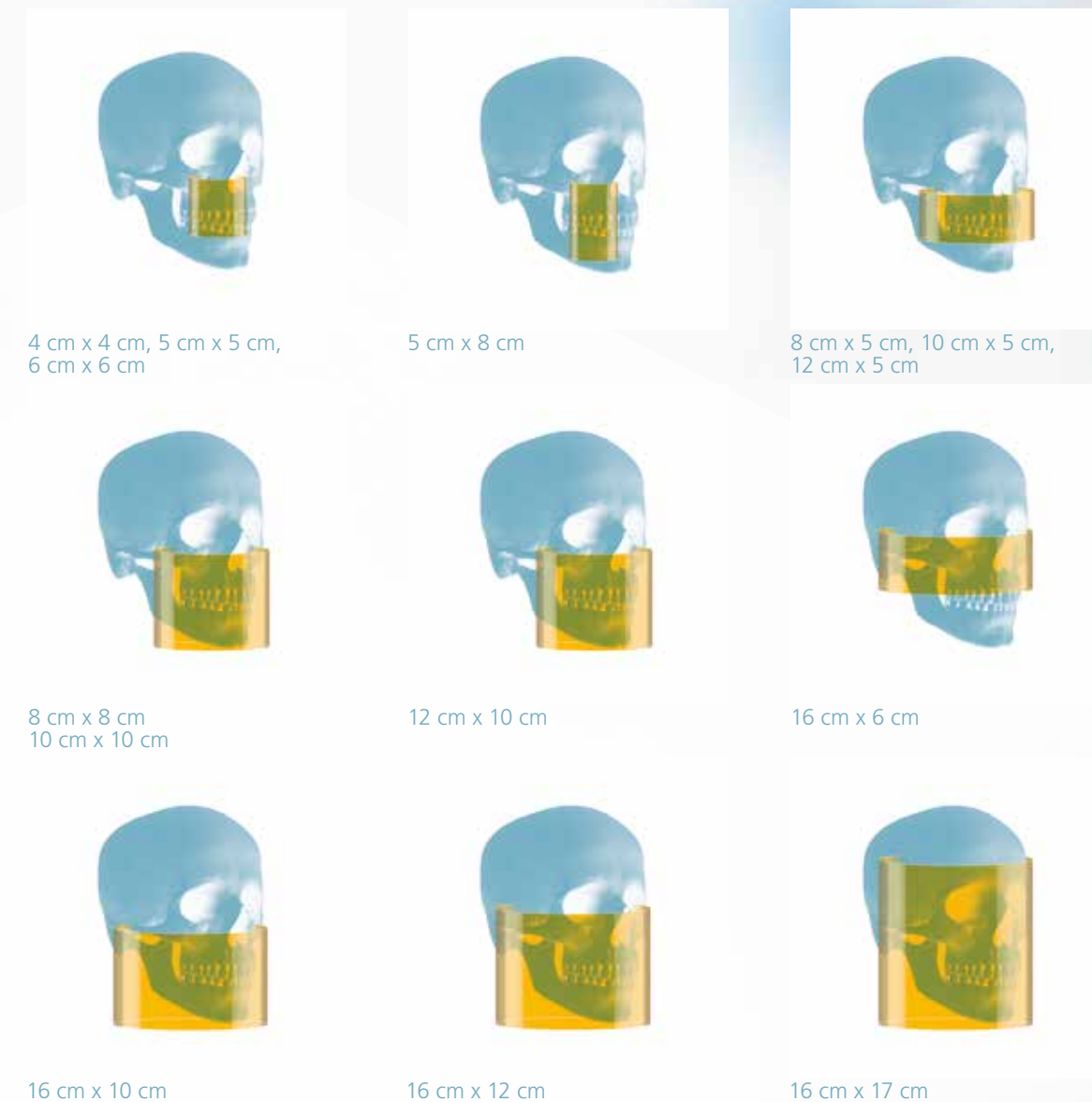


CS 9600 FAMILY

Carestream
DENTAL



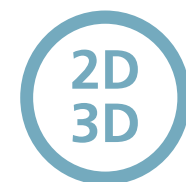
UP TO 14 FIELDS OF VIEW



INNOVATION DRIVES PRECISION

There's nothing simple about your daily work. But now there is a simpler way for you to capture the images you need to achieve faster diagnoses and treatment plans.

The groundbreaking CS 9600 enables new levels of image quality, usability and, ultimately, precise diagnostic capabilities. The system features intelligent innovations and automated workflow technologies to ensure reliable patient positioning and reproducible image quality—independent of operator skills. And for a future beyond today, the system can grow with your practice thanks to upgradeable fields of view, versatile imaging options and added-value software.



MULTI-FUNCTIONAL SYSTEM

Multi-functional imaging systems blend 2D panoramic technology and CBCT imaging with 3D model scanning¹ and 3D facial scanning¹ to create one powerful unit, which can also be upgraded to include cephalometric imaging.¹

THREE UPGRADEABLE VERSIONS

The CS 9600's flexible design allows you to upgrade to a larger field of view without replacing the unit when you want to grow into new areas.

CS 9600 12X10 EDITION

FOV: 4 cm x 4 cm to 12 cm x 10 cm

Ideal for endodontics, periodontics, implants, 3rd molars and general dentistry.

CS 9600 16X10 EDITION

FOV: 4 cm x 4 cm to 16 cm x 10 cm

Adds FOVs for complex implant cases, bilateral TMJ, airway and most oral surgery.

CS 9600 16X17 EDITION

FOV: 4 cm x 4 cm to 16 cm x 17 cm

For all needs including radiology, ENT, maxillofacial and orthognathic surgery.

For more information, call 800.944.6365 or visit us at carestreamdental.com

© 2019 Carestream Dental LLC. 18477 AL CS 9600 BR 0319

¹Option – Work-in-progress, not available for sale

²Option

SO SMART, YET SO SIMPLE

CS 9600

DESIGNED FOR FIRST-TIME-RIGHT IMAGING

As the most advanced CBCT unit in its category, the CS 9600 features multiple advances that enable you and your staff to achieve high-quality, reproducible images with minimal experience using the system. Its intuitive workflow and cutting-edge technologies bring a new level of automation and simplicity to dental and maxillofacial imaging.

The unit comes with breakthrough innovations, such as Live Positioning Assistant, video cameras and SmartAuto technology, to ensure correct and consistent patient positioning—helping your team capture accurate scans on the first try.



STABLE POSITIONING
Patient can be scanned standing or seated using the optional removable seat² that maximizes patient stability and minimizes risk of motion.



LIVE POSITIONING ASSISTANT
Patients are aligned using cameras, while live patient views are displayed on the SmartPad for easy and exact positioning.

USER-FRIENDLY SMARTPAD
Intuitive SmartPad and clear interface guide the user through the exam, simplifying the procedure from exam setup to image quality control.

MORE POWER, LESS ARTIFACTS, LESS DOSE
The 120 kV high-power imaging chain¹ helps reduce artifacts and improve contrast while reducing effective dose for CBCT exams.

SMART TECHNOLOGIES
SmartAuto Pan and SmartAuto 3D analyze the patient morphology to automatically calculate the right exposure settings and trajectory, or to precisely define the field-of-view position.

CS MAR
CS MAR drastically reduces metal artifacts and even lets you explore images dynamically—with or without MAR filter—for more confident diagnoses.

CS FACE SCAN
Capture realistic 3D facial photos with the optional CS Face Scan,¹ and automatically superimpose the surface scan with CBCT images and 3D models.



CS Advantage

Stay tuned and covered. Enroll in CS Advantage.

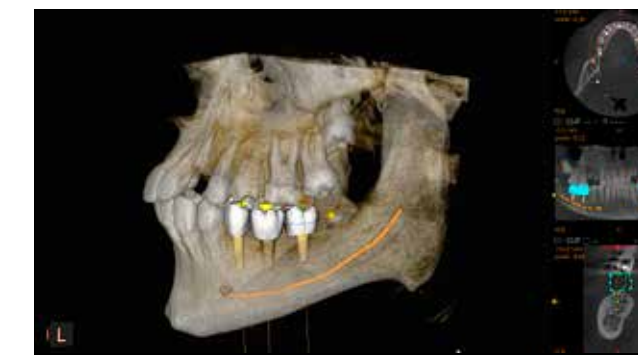
Get the extended warranty coverage, software updates, training and support you need to ensure the best possible experience with your equipment purchase. It's easy with our CS Advantage plan. Contact your Carestream Dental representative for more information.

Panoramic



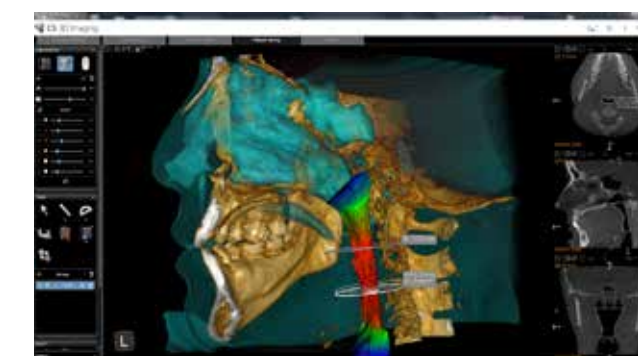
A complete range of panoramic programs cover all of your routine needs, including, but not limited to extraoral bitewing, extraoral FMS² and low dose options

Implants



Plan implants with confidence using our advanced implant planning software with customizable virtual crowns and comprehensive implant library.

Airway Analysis



Analyze the upper airway with automatic measurements and color-coded 3D views to easily visualize constrictions and changes in airway.

Endodontics



High resolution images (up to 75 μm) are perfectly suited for endodontic indications and can now be captured on focused FOV, single and dual jaw modes.

Oral and Maxillofacial Surgery



With up to 14 fields of view, including full skull and TMJ imaging, the CS 9600 is ideal for maxillofacial surgery—including orthognathics.

3D Facial Scanning



Capture the realistic 3D image of the patient's face and combine it with the CBCT image.