



CANOLFAN MILENIWM CYMRU
WALES MILLENNIUM CENTRE

VISUAL STORY FOR THE DONALD GORDON THEATRE



The show you are coming to see is being performed at Wales Millennium Centre.

This is what Wales Millennium Centre looks like:





CANOLFAN MILENIWM CYMRU
WALES MILLENNIUM CENTRE

When entering through the front doors you will see our café-bar Ffwrnais and one of our welcome hosts.

If you turn left, you will be heading to the North side of the building where you can find our Siop which includes our information point and cloakroom, and Bocs, our VR space.

Stairs and lifts on this side of the building will take you to seats 1–28 on Levels 1 to 6.

If you turn right after coming through the front doors, you will find our merchandise stand, Caffi, Radio Platfform, Tŷ Cerdd and Bar One.

Stairs and lifts on this side of the building (South) will take you to seats 29–55 on Levels 1 to 6.



TOILETS

When entering the building from the front doors, turn right and then turn left just before the staircase. The toilets will be directly in front of you. These toilets have two accessible toilets including one with a winch.

When looking for someone to ask for help, don't hesitate to approach any of our staff in green lanyards located throughout the building. Our ushers will be located at each theatre door throughout the performance and during your visit staff will also be wandering around the concourse and bars.





CANOLFAN MILENIWM CYMRU
WALES MILLENNIUM CENTRE

From the front doors, Siop and the cloakroom are located on the left side of the concourse in the area opposite Bocs and the stairs.

From the cloakroom you will be able to access any audio description equipment you may need. You may also collect a wheelchair if needed or drop off your guide dog if you would like to during your visit.

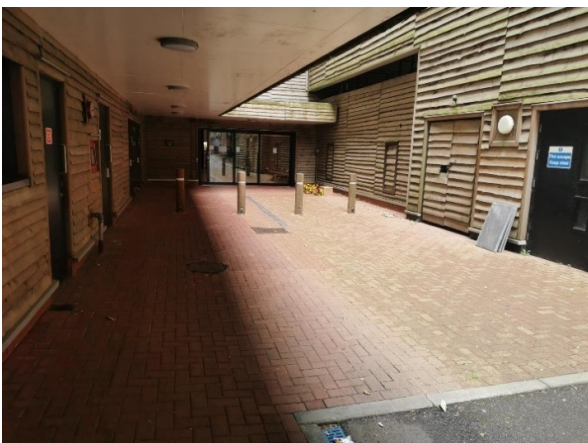
This space also houses our booster cushions which you may need during your visit.

IF YOU ARE USING OUR BLUE BADGE CAR PARK

To access the Blue Badge Car Park, you will need to drive around the back of Wales Millennium Centre. You will then be granted access to the site.



To head inside the building from the car park, turn right towards a set of sliding doors. You will enter the building on the side which houses the lower seat numbers (1–28). If your seat is in these numbers, you can take the lift which is 14 steps away and on your left.



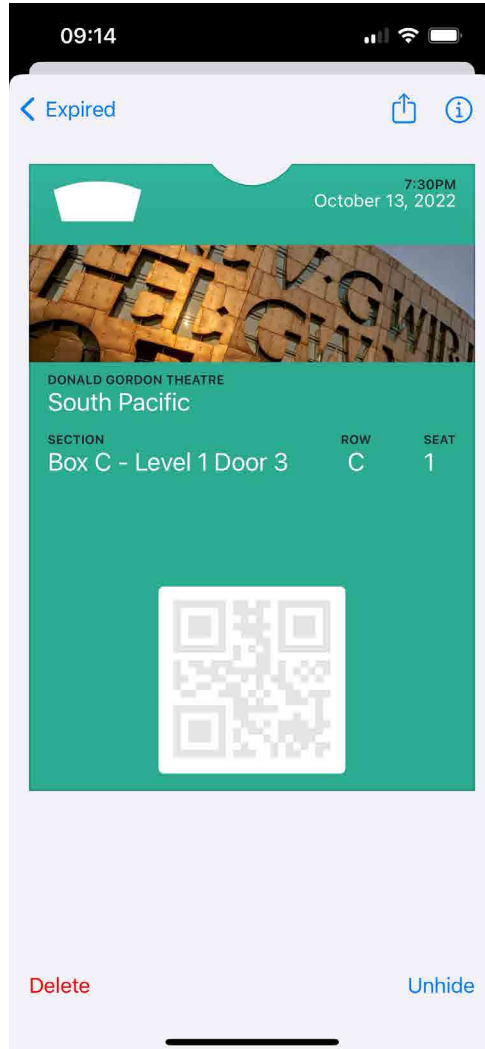
If your seat is in the higher numbers (29–55) you will need to cross the concourse to reach the other lift and stairs. Walk past the lift and turn left to walk through Ffwrnais.



CANOLFAN MILENIWM CYMRU
WALES MILLENNIUM CENTRE

YOUR TICKET

This is what your ticket will look like:



Add your tickets to Apple Wallet or Google Wallet



Opera Favourites
Tuesday, 5 March 2024 7:30PM
Donald Gordon Theatre,
Stairs A - Level 1 - Door 3 - H13
Ticket number: 15121507



Opera Favourites
Tuesday, 5 March 2024 7:30PM
Donald Gordon Theatre,
Stairs A - Level 1 - Door 3 - H12
Ticket number: 15121506



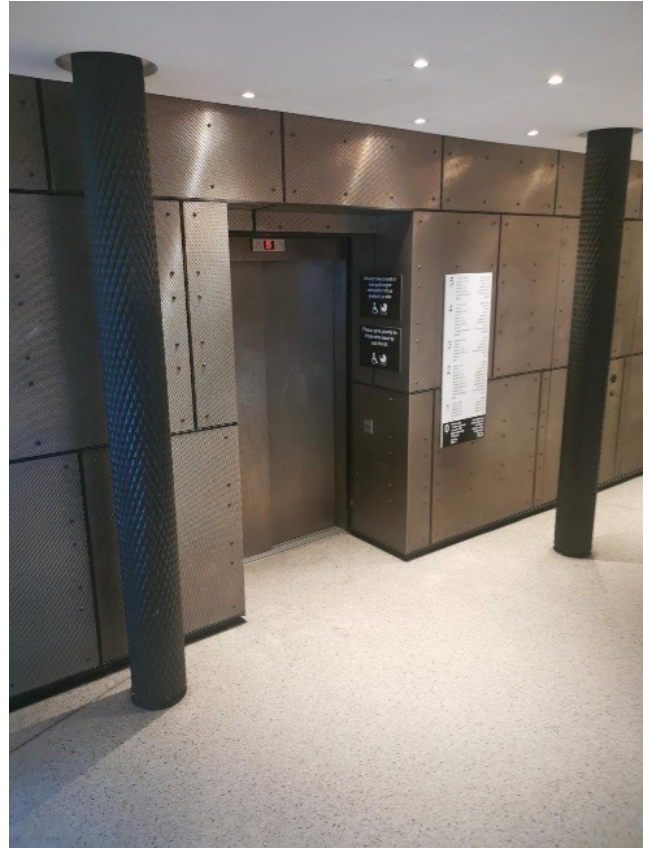


CANOLFAN MILENIWM CYMRU
WALES MILLENNIUM CENTRE

TO GET TO THE DIFFERENT THEATRE LEVELS

If you have a ticket for a balcony or box, please speak to a member of the team who will direct you.

From the concourse there are stairs and lifts on the right and left. At the bottom of the stairs you may have your bag searched by security. You can then head up the stairs or use the lift.



There are accessible toilets on every level. On Level 2 there are ladies and men's toilets on both sides of the building. From Level 3 upwards, there are ladies' toilets on the North side and men's toilets on the South side.



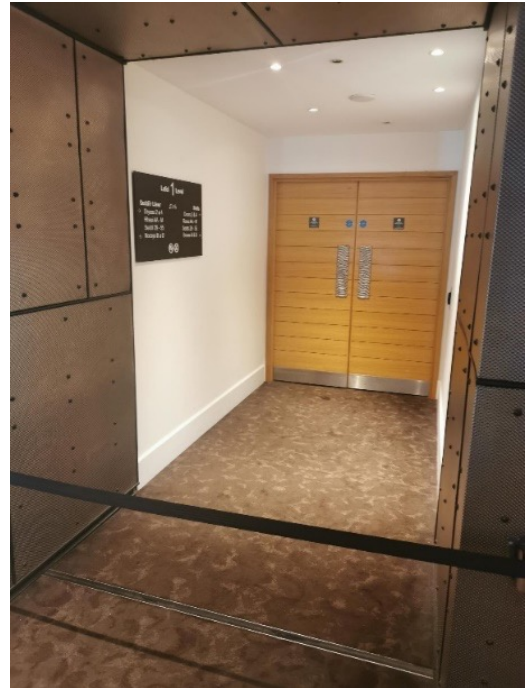


CANOLFAN MILENIWM CYMRU
WALES MILLENNIUM CENTRE

LEVEL ONE SOUTH (LOWER STALLS AND MID STALLS, SEAT NUMBERS 29–55, BOXES B AND D)

After entering the concourse from the front doors you will turn right and head up one flight of stairs (22 steps), or you can use the lift.

Then you will turn left (or right if coming from the lift) and follow the path through the doors. The first entrance to the theatre is for the **Mid Stalls**. To reach the **Lower Stalls**, you will go down the ramp to the right.



LEVEL ONE NORTH (LOWER STALLS AND MID STALLS, SEAT NUMBERS 1–28, BOXES A AND C)

After entering the concourse from the front doors, you will turn left and then head up one flight of stairs (22 steps), or you can use the lift.

Then you will turn right (or left if coming from the lift) and follow the path through the doors. The first entrance to the theatre is for the **Mid Stalls**. To reach the **Lower Stalls**, you will go down the ramp to the left.

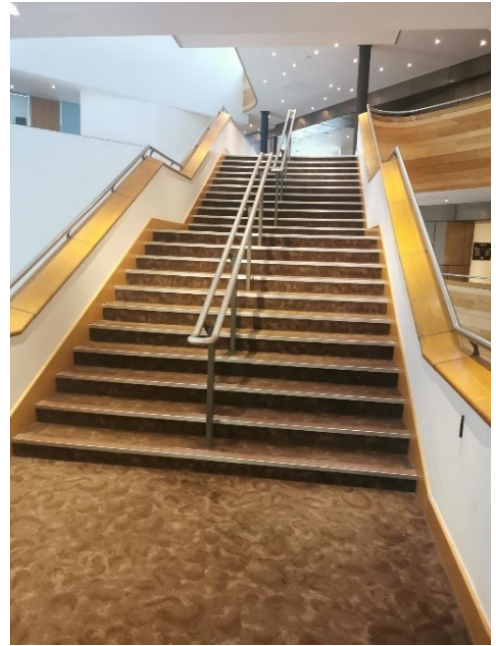




CANOLFAN MILENIWM CYMRU
WALES MILLENNIUM CENTRE

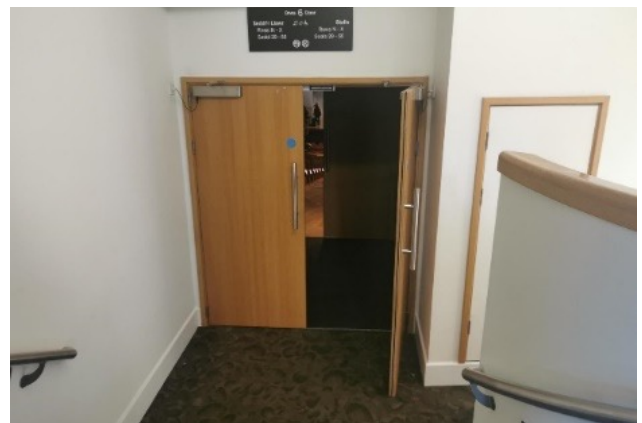
**LEVEL 2 SOUTH (RAISED STALLS,
SEAT NUMBERS 29–55, BALCONY B)**

Once you enter the concourse through the front doors you will turn right towards the lift or stairs. You will then ascend one flight of stairs (22 steps). Then you will turn right and ascend a second flight of stairs (22 steps).



On Level 2 you will walk straight ahead to reach Awen Bar. From the lift, you will turn right on exiting and walk ahead to reach the bar.

You will enter the theatre via the first set of silver doors on the right and turn right to go down a ramp and follow it round or alternatively you can walk down four steps to the entrance to the **Raised Stalls**.





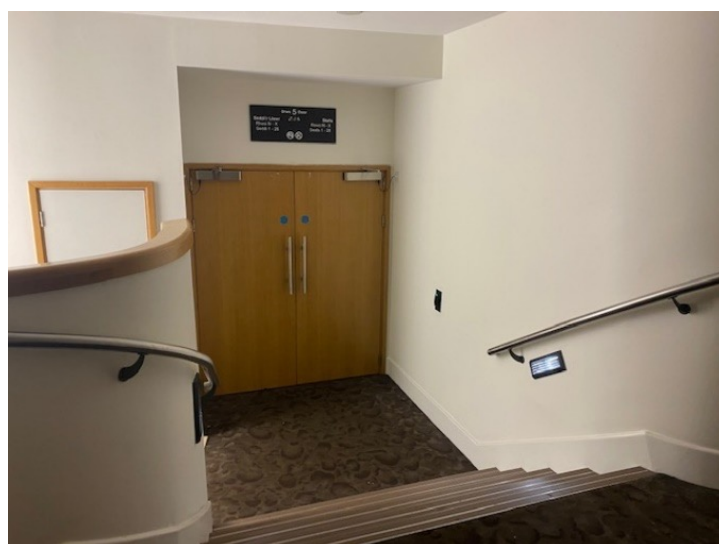
CANOLFAN MILENIWM CYMRU
WALES MILLENNIUM CENTRE

LEVEL 2 NORTH (RAISED STALLS, SEAT NUMBERS 1-28, BALCONY A)

Once you enter the concourse through the front doors you will turn left towards the lift or stairs. You will then ascend one flight of stairs (22 steps). Then you will turn left and ascend a second flight of stairs (22 steps).

You will walk straight ahead to reach Awen Bar. From the lift, you will turn left on exiting and walk ahead to reach the bar.

You will enter the theatre via the first set of silver doors on the left and turn left to go down a ramp and follow it round or alternatively you can walk down four steps to the entrance to the **Raised Stalls**.





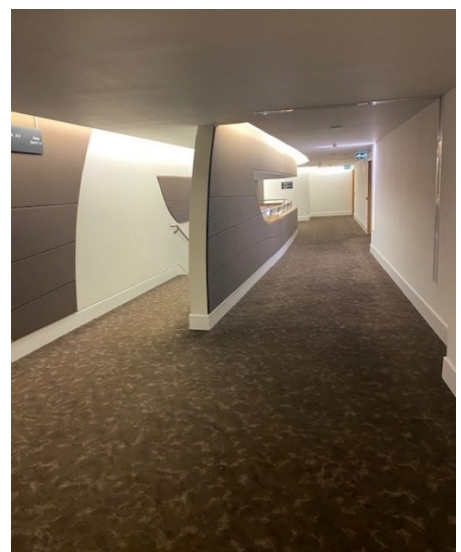
CANOLFAN MILENIWM CYMRU
WALES MILLENNIUM CENTRE

**LEVEL 3 SOUTH (FRONT
CIRCLE, SEAT NUMBERS 29–55,
BALCONIES D AND F)**

Once you enter the concourse through the front doors you will turn right towards the lift or stairs. You will then ascend one flight of stairs (22 steps). Then you will turn right and ascend a second flight of stairs (22 steps). You will turn right again and ascend a third flight of stairs (22 steps).



Once you have reached Level 3 you will go through the brown double doors on the right and there are nine steps down to reach the **Front Circle**. From the lift, you will turn right on exiting to reach the brown double doors.





CANOLFAN MILENIWM CYMRU
WALES MILLENNIUM CENTRE

LEVEL 3 NORTH (FRONT CIRCLE, SEAT NUMBERS 1-28, BALCONIES C AND E)

Once you enter the concourse through the front doors you will turn left towards the lift or stairs. You will then ascend one flight of stairs (22 steps). Then you will turn left and ascend a second flight of stairs (22 steps). You will turn left again and ascend a third flight of stairs (22 steps).

Once you have reached Level 3 you will go through the brown double doors on the left and there are nine steps down to reach the **Front Circle**. From the lift, you will turn left on exiting to reach the brown double doors.



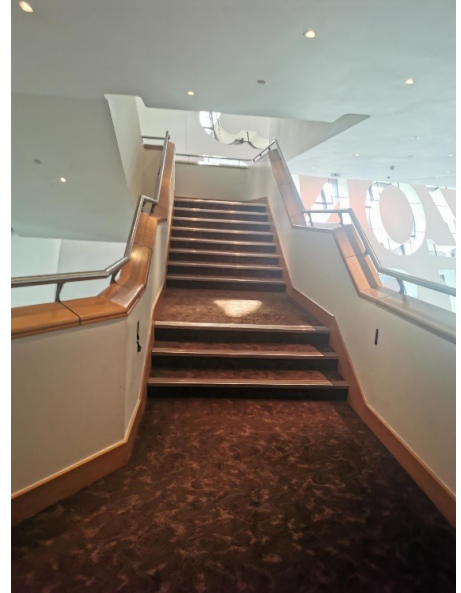


CANOLFAN MILENIWM CYMRU
WALES MILLENNIUM CENTRE

LEVEL 4 SOUTH (CIRCLE AND UPPER CIRCLE, SEAT NUMBERS 29–55, BALCONY H)

On Level 4 you can access the **Circle and Upper Circle**. On reaching this level, it's important to know in which section you are sitting to avoid confusion.

Once you enter the concourse through the front doors you will turn right towards the lift or stairs. You will then ascend one flight of stairs (22 steps). Then you will turn right and ascend a second flight of stairs (22 steps). You will turn right again and ascend a third flight of stairs (22 steps). Once on Level 3 go straight ahead and ascend a further two flights of stairs (11 steps on each).

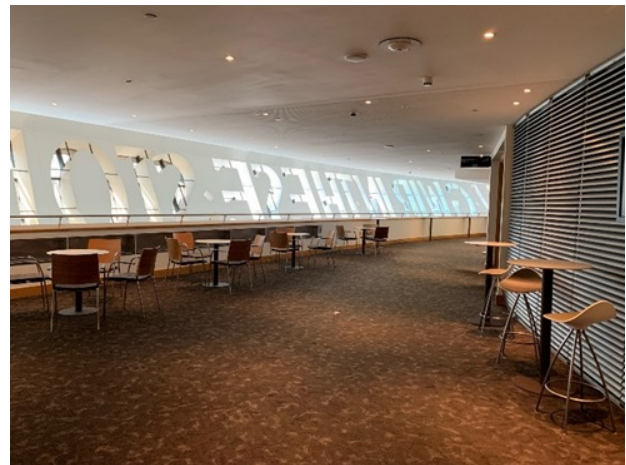


On Level 4, the lift doors will open on the opposite side, not the side you entered. On leaving the lift you will be in the inner lobby, and you will see a gap in front of you. Through the gap you can turn right to reach the **Front Upper Circle** or turn left to reach the **Rear Circle**.



CANOLFAN MILENIWM CYMRU
WALES MILLENNIUM CENTRE

When reaching Level 4 via the stairs, you will be met with two sets of double doors that will lead you to the inner lobby. In here you will find the lift, and from here you can enter the **Front Upper Circle**. Go through the gap on the left and go down the ramp to the right.



To get to the **Rear of the Circle** from the stairs, do not go through the brown double doors and turn left to reach Horizons Bar. You will enter the theatre via the first set of silver doors on the right and turn right to go down a ramp and follow it round or alternatively you can walk down six steps to the entrance to the **Rear of the Circle**.





CANOLFAN MILENIWM CYMRU
WALES MILLENNIUM CENTRE

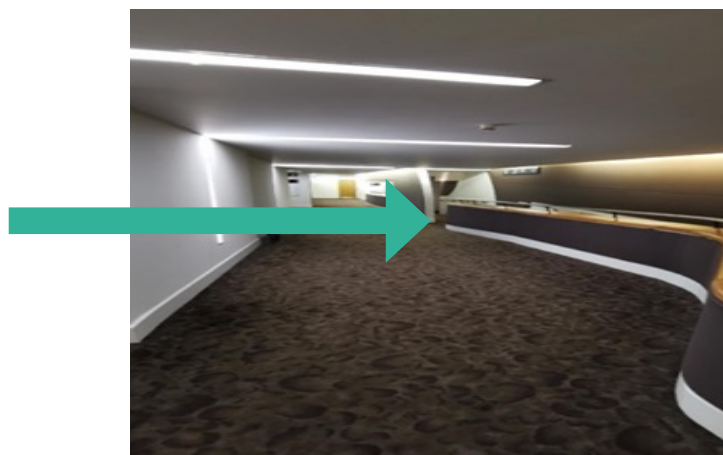
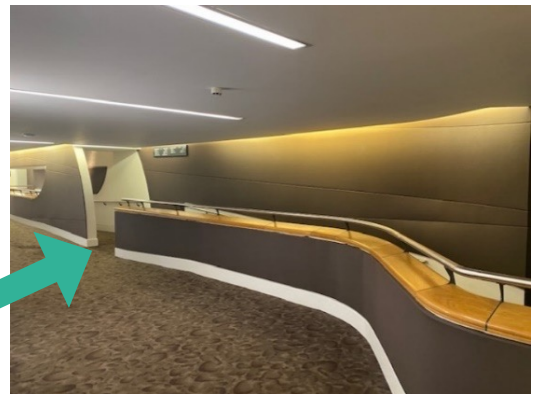
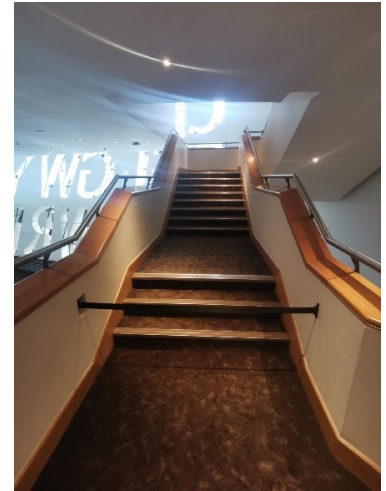
LEVEL 4 NORTH (CIRCLE AND UPPER CIRCLE, SEAT NUMBERS 1-28, BALCONY G)

On Level 4 you can access the **Circle and Upper Circle**. On reaching this level, it's important to know which section you are sitting in to avoid confusion.

Once you enter the concourse through the front doors you will turn left towards the lift or stairs. You will then ascend one flight of stairs (22 steps). You will turn left and ascend a second flight of stairs (22 steps). Then you will turn left again and ascend a third flight of stairs (22 steps). Once on Level 3 you will go straight ahead and ascend a further two flights of stairs (11 steps on each).

On Level 4, the lift doors will open on the opposite side, not the side you entered. On leaving the lift you will be in the inner lobby, and you will see a gap in front of you. Through the gap you can turn left to reach the **Front Upper Circle** or turn right to reach the **Rear Circle**.

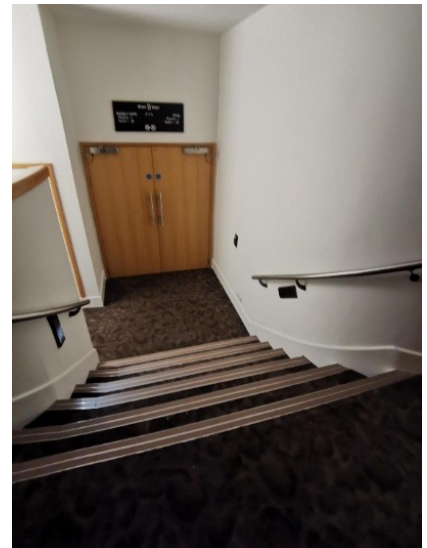
When reaching Level 4 via the stairs, you will see two sets of brown double doors that will lead you to the inner lobby. In here you will find the lift, and from here you can enter the **Front Upper Circle**. Go through the gap on the right and go down the ramp to the left.





CANOLFAN MILENIWM CYMRU
WALES MILLENNIUM CENTRE

To get to the **Rear of the Circle**, do not go through the brown double doors and turn right to reach Horizons Bar. You will enter the theatre via the first set of silver doors on the left and turn left to go down a ramp and follow it round or alternatively you can walk down six steps to the entrance to the **Rear of the Circle**.



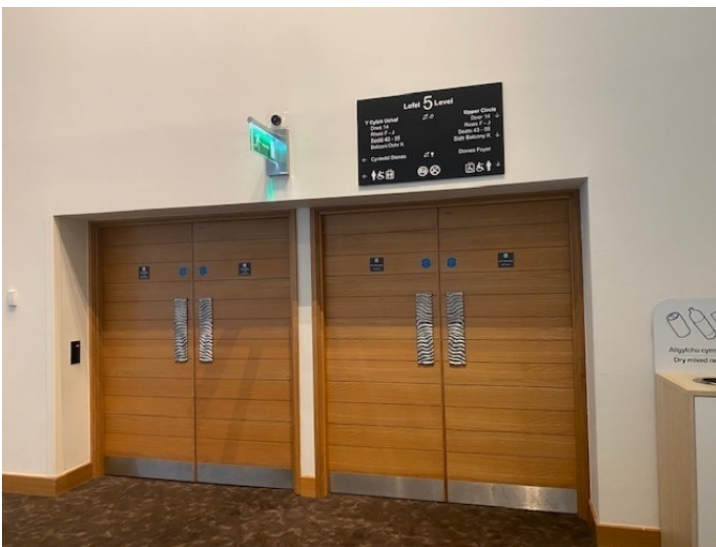


CANOLFAN MILENIWM CYMRU
WALES MILLENNIUM CENTRE

LEVEL 5 SOUTH (UPPER CIRCLE, SEAT NUMBERS 29-55)

Once you enter the concourse through the front doors you will turn right towards the lift or stairs. You will ascend one flight of stairs (22 steps). Then you will turn right and ascend a second flight of stairs (22 steps). You will turn right again and ascend a third flight of stairs (22 steps). Once on Level 3 you will go straight ahead and ascend a further four flights of stairs up to Level 5 (11 steps on each).

When reaching Level 5 via the stairs, you will see two sets of brown double doors that will lead you to the inner lobby. This is where the lift is, and from here you can access the **Mid-Upper Circle**. After going through the doors, turn left and the door to the **Mid-Upper Circle** will be on the right. There are two steps up to the door.





CANOLFAN MILENIWM CYMRU
WALES MILLENNIUM CENTRE

On Level 5, the lift doors will open on the opposite side to the side you entered. When you leave the lift you will be in the inner lobby. You will turn left, and then right before the brown double doors – the door to the **Mid-Upper Circle** will be on the right. There are two steps up to the door.



Once inside the theatre, please be aware there are steep steps up and down in this section to access your seats.

To get to the **Rear of the Upper Circle** from the stairs, do not go through the brown double doors and turn left to reach Stones Bar. (From the lift, turn left to go through the brown double doors and then turn right to reach the bar). You will enter the theatre via the first set of silver doors on the right and turn right to go up 16 steps and then turn left to reach the door to the theatre.





CANOLFAN MILENIWM CYMRU
WALES MILLENNIUM CENTRE



Once inside the theatre, please be aware there are steep steps down in this section to access your seats.

Through the silver doors, on the left, is our accessible lift in order to get to the wheelchair spaces on this side.

To call this lift you have to press and hold the button outside. When inside you will select the floor you want (6 if going up or 5 if going down) and again hold the button down. If you don't hold the button down the lift won't move. If you have any trouble our ushers will be on hand to help you every step of the way.





CANOLFAN MILENIWM CYMRU
WALES MILLENNIUM CENTRE

LEVEL 5 NORTH (UPPER CIRCLE, SEAT NUMBERS 1-28)

Once you enter the concourse through the front doors you will turn left towards the lift or stairs. You will ascend one flight of stairs (22 steps). Then you will turn left and ascend a second flight of stairs (22 steps). You will turn left again and ascend a third flight of stairs (22 steps). Once on Level 3 you will go straight ahead and ascend a further four flights of stairs up to Level 5 (11 steps on each).



When reaching Level 5 via the stairs, you will see two sets of brown double doors that will lead you to the inner lobby. In here you will find the lift, and from here you can access the **Mid-Upper Circle**. After going through the doors, turn right and the door to the **Mid-Upper Circle** will be on the left. There are two steps up to the door.





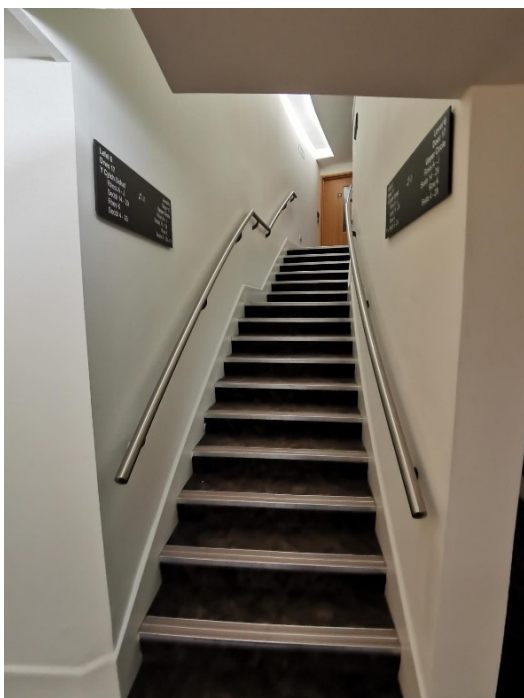
CANOLFAN MILENIWM CYMRU
WALES MILLENNIUM CENTRE

On Level 5 the lift will open on the opposite side to the side you entered. When you leave the lift you will be in the inner lobby. You will turn right, and then left before the brown double doors – the door to the **Mid-Upper Circle** will be on the left. There are two steps up to the door.



Once inside the theatre, please be aware there are steep steps up and down in this section to access your seats.

To get to the **Rear of the Upper Circle** from the stairs, do not go through the brown double doors and turn right to reach Stones Bar. (From the lift, turn right to go through the brown double doors and then turn left to reach the bar). You will enter the theatre via the first set of silver doors on the left and turn left to go up 16 steps and then turn right to reach the door to the theatre.





CANOLFAN MILENIWM CYMRU
WALES MILLENNIUM CENTRE

If you need assistance at any point during your visit, please ask a member of staff or security.

If you have any questions about your visit to Wales Millennium Centre, you may find the answer to your question in the [FAQs](#) section of our website

As all of our performances are different, some information in this Visual Story might not apply to your visit.

We hope you enjoy your time at Wales Millennium Centre!