



WatchHouse.

Event Pack.

Contents.



The Chiron Room at WatchHouse Marylebone.

Our story.

266 square feet on London's famous Bermondsey Street in 2014 was all it took to conceive WatchHouse and lay the foundations of everything that was to come. Historically a 19th century shelter for watchmen guarding the graveyard of St Mary Magdalen's Church, the tiny building became our namesake and the original home of our Modern Coffee ambition.

Modern Coffee represents a holistic approach to making the local café experience exceptional with industry-leading coffee and provenance-led food in beautifully designed spaces across London.



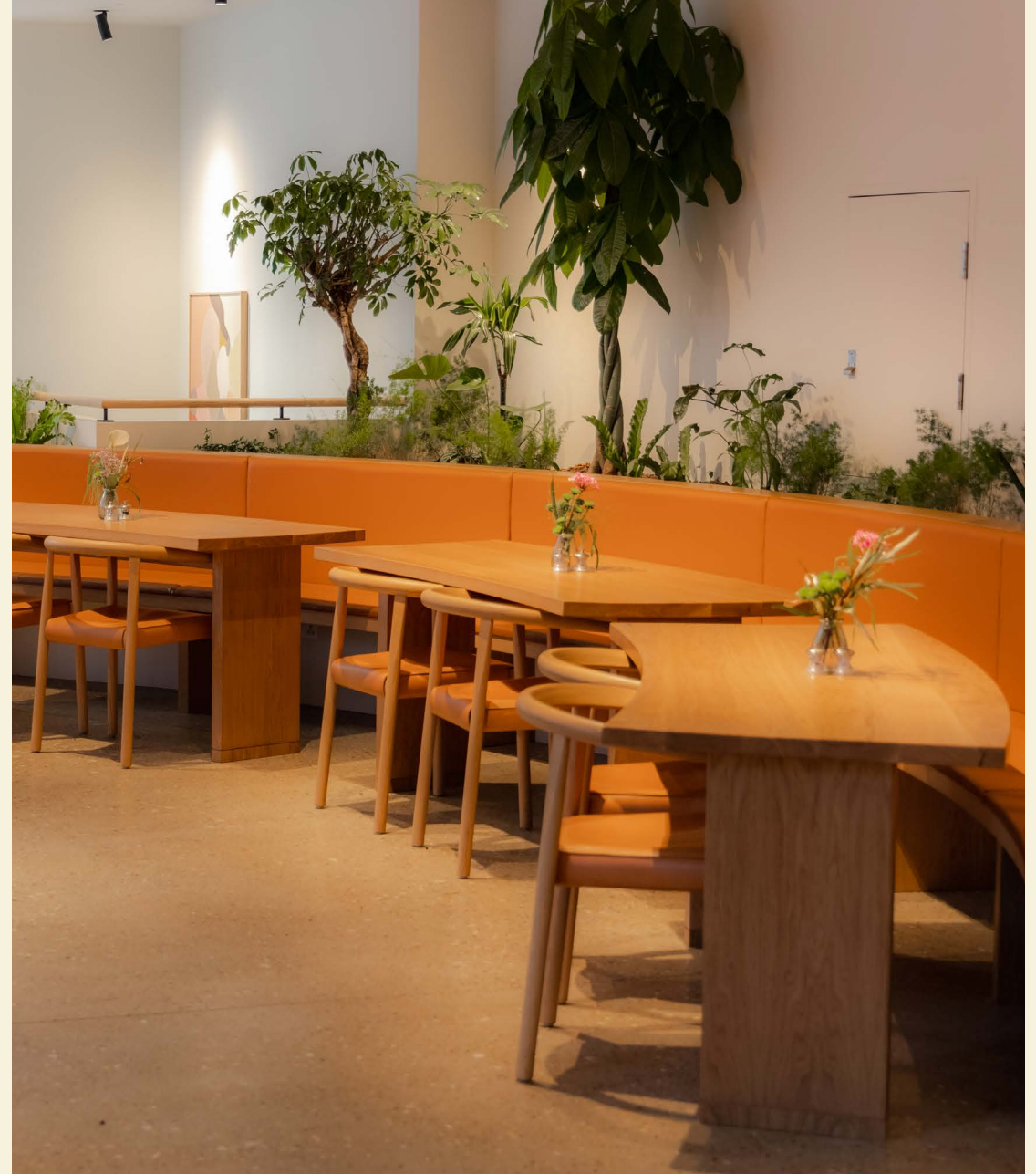
Our spaces.

Beautifully designed spaces inspired by local environments set WatchHouse apart with a meticulous emphasis on high-quality craftsmanship.

Our Houses and teams are versatile and we can accommodate a variety of events depending on requirements. Rooms can be rented cumulatively or in full. Additional add ons are available for all events.



WatchHouse Seven Dials.



WatchHouse Somerset House.



Spitalfields.



Bath.



Marylebone.



Seven Dials.



Somerset House.



St Mary Axe.



The Roastery.



Coffee tasting.

Our specialty coffees are sourced at origin, roasted and rotated seasonally to constantly offer new experiences for customers, everything from small batch through to experimental & rare coffees from developing origins, alongside established coffee producing regions.



Rare coffee tasting.

Modern Coffee Tasting. £20pp.

Join us for our signature Modern Coffee tasting and discover some of the seasonal lots upcoming on our bars from unique and developing origins like Timor-Leste and Uganda alongside established coffee producing regions including Colombia and Brazil.

Each guest will enjoy a selection of our latest coffees roasted at our in-house Roastery as part of a guided talk and tasting to discover more about these incredible lots.

Rare Coffee Tasting. £30pp.

We've spent the past two years building a frozen archive of rare coffees that showcase the exceptional varieties, farming and processing techniques at the forefront of specialty coffee. Sourced, roasted and rested until their peak, these coffees have then been frozen in tiny batches, holding all of their exceptional flavours in time.

Each guest will enjoy a selection of world class coffees from our archive roasted at our in-house Roastery as part of a unique guided talk and tasting talk experience.

Available for groups of 6 or more. Add-ons available.

Coffee and drinks.

Hot drinks.

Filter coffees	25.0 /8 servings
Teas	16.0 /8 servings
Modern coffee tasting	20.0/pp
Rare coffee tasting	30.0/pp
Barista drinks available upon request	

Soft Drinks.

Fresh orange juice	9.00/carafe
Press juices and smoothies	6.00/bottle
Still/Sparkling water	3.00/bottle
Rapscallion Sodas	3.50/bottle



Alcohol.

Beers	Forest Road Posh All British lager	6.50
	Forest Road Work I.P.A	6.50
	Forest Road RIDE Session IPA	6.50
	Lucky Saint low alcohol beer	6.00
Cocktail options are available upon request	Espresso martini	12.0
	Aperol Spritz	10.0
	Mimosa	9.00
	Gin and Bermondsey Tonic	8.00 single 10.0 double
Wine	Sauvignon VdP du Val de Loire, Vignerons de Valencay, France	28.5
	Bordeaux Superieur, Chateau des Antonins, France	28.5
	Rioja Izadi Larrosa, Villabuena de Alava, Spain	34.0
Sparkling	Prosecco Spumante Extra Dry, Ca'di Alte, Veneto, Italy	32.0
Champagne	Essentiel Cuvee Reservee, Extra Brut, Piper Heidsieck, Champagne, France	55.0



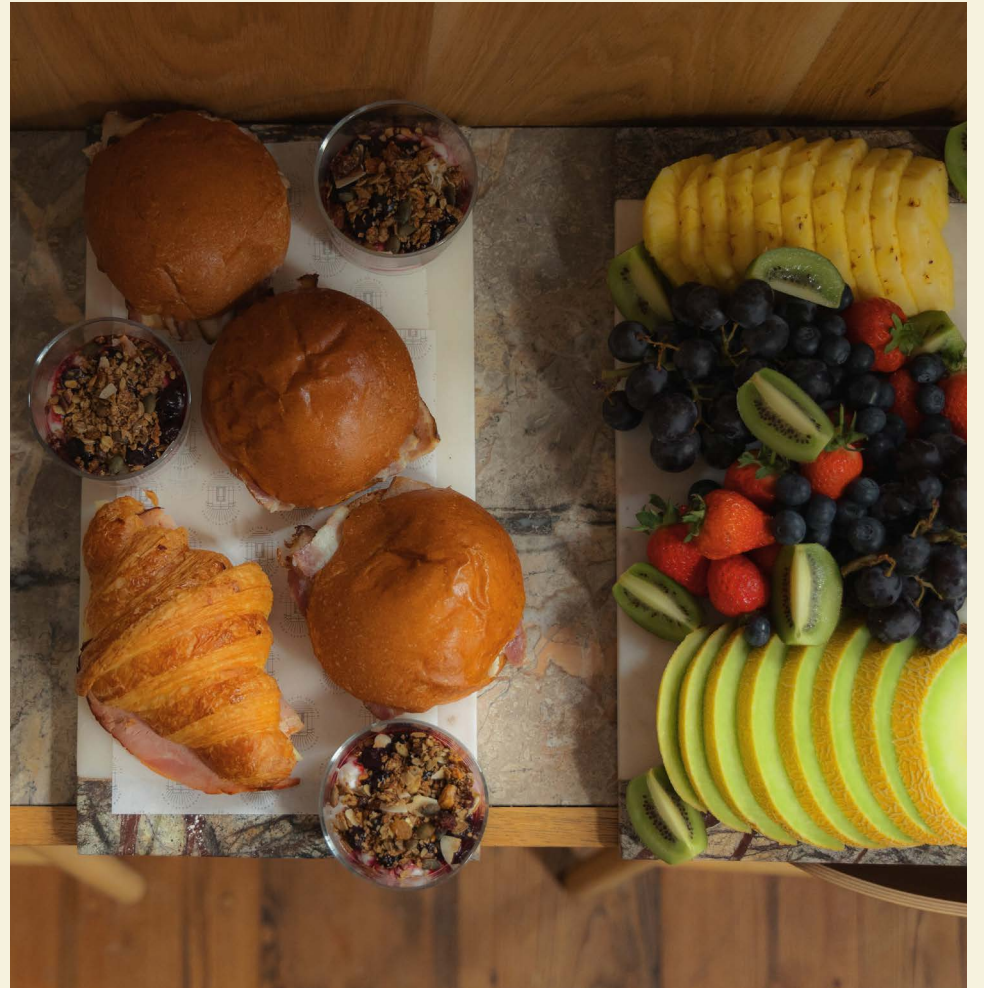
Food.



Food options.

We've got a range of food options available to suit a range of events. From a breakfast of freshly baked pastries, and breakfast sandwiches, with filter coffee, and fresh orange juice; to an afternoon or evening of sandwiches, wraps and nibbles with cocktails, wines and beers.

Please get in touch to see what we can do for you and your event.





Marylebone.

The full Modern Coffee experience in the heart of Marylebone village.

	The Chiron Room
Capacity	24
2hrs	£840
Half day (4hrs)	£1,596
Full day (8hrs)	£2,856

Prices are subject to change and exclude VAT.



The Chiron Room.

Seven Dials.

Our first West End site designed in homage to the area's rich artistic history.

	The Cupping Room	Rocco
Capacity	10	20
2hrs	£100	£700
Half day (4hrs)	£250	£1,330
Full day (8hrs)	£400	£2,380

Prices are subject to change and exclude VAT.

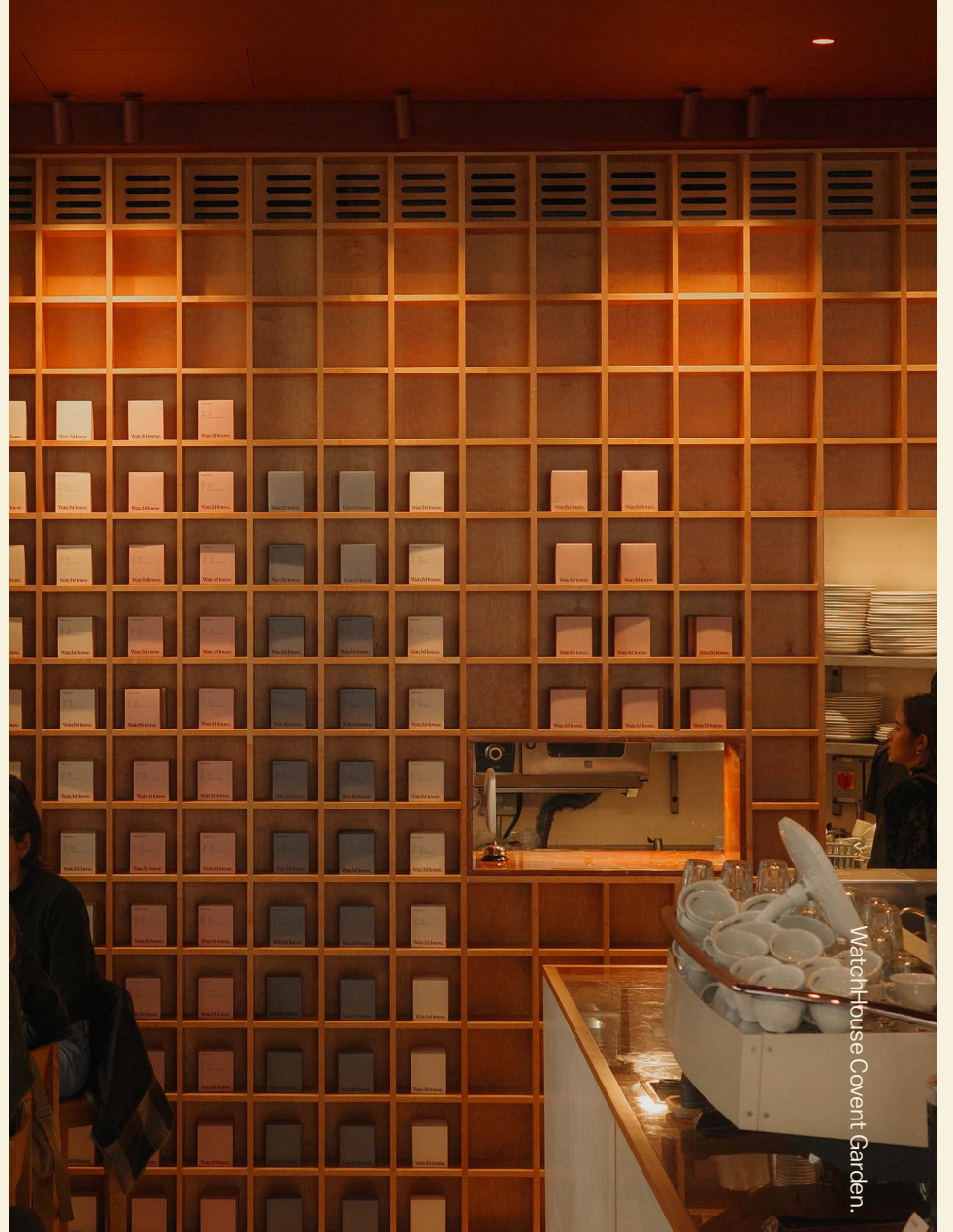


Flat screen TV included in hire.

The Cupping Room.



Sleeping room



WatchHouse Covent Garden.

Covent Garden.

A West End espresso stop in Covent Garden.

	Downstairs
Capacity	45
2hrs	£1,120
Half day (4hrs)	£2,128
Full day (8hrs)	£3,808

Prices are subject to change and exclude VAT.



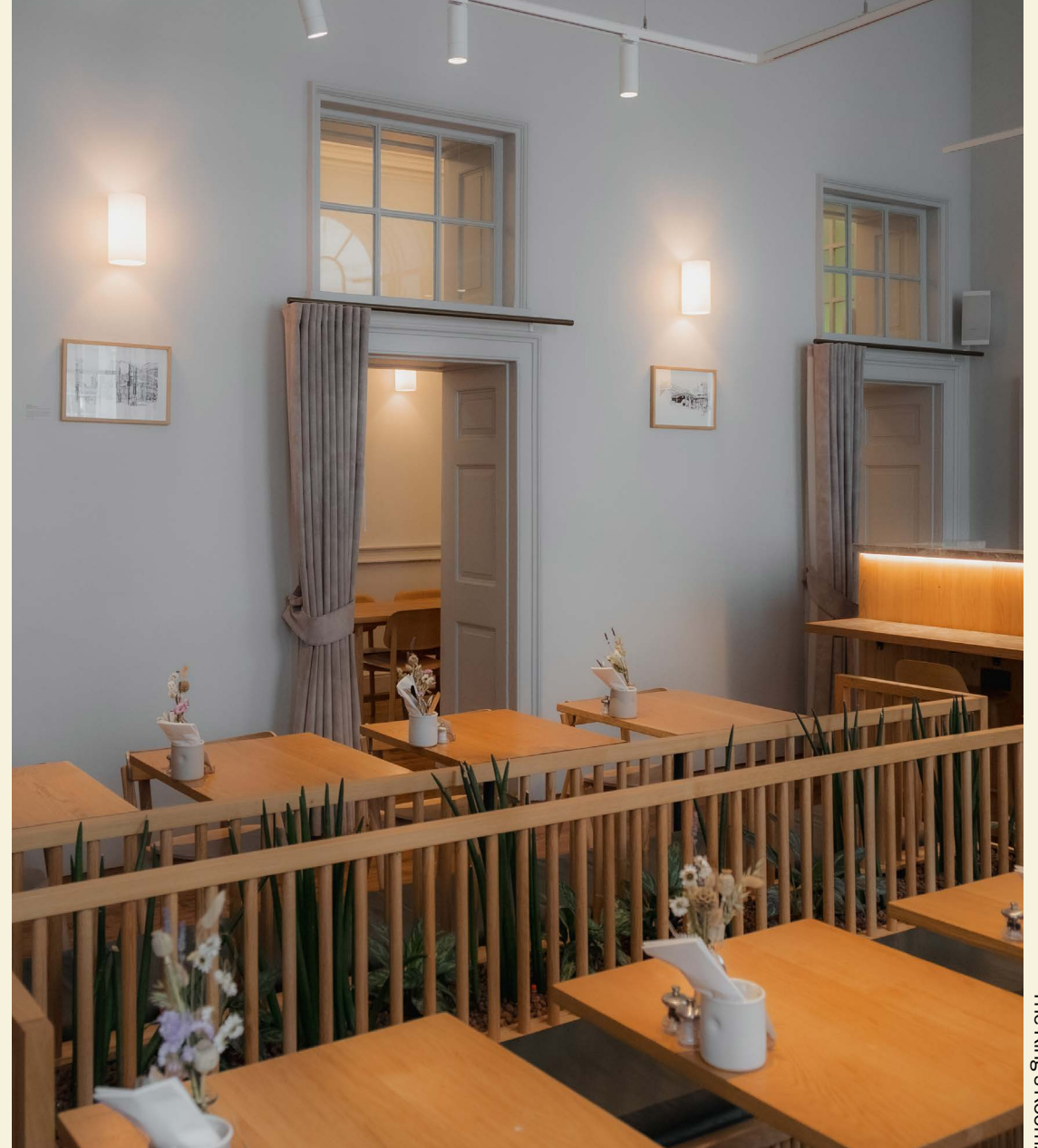
Downstairs.

Somerset House.

Modern Coffee from day to night in one of London's most iconic cultural institutions.

	The King's Room	The King's Room and The Tree Room
Capacity	30	65
2hrs	£700	£1,400
Half day (4hrs)	£1,330	£2,660
Full day (8hrs)	£2,380	£4,760

Prices are subject to change and exclude VAT.



Key features include soundproof curtains.

The King's Room.



Area between the King's Room and The Tree Room.



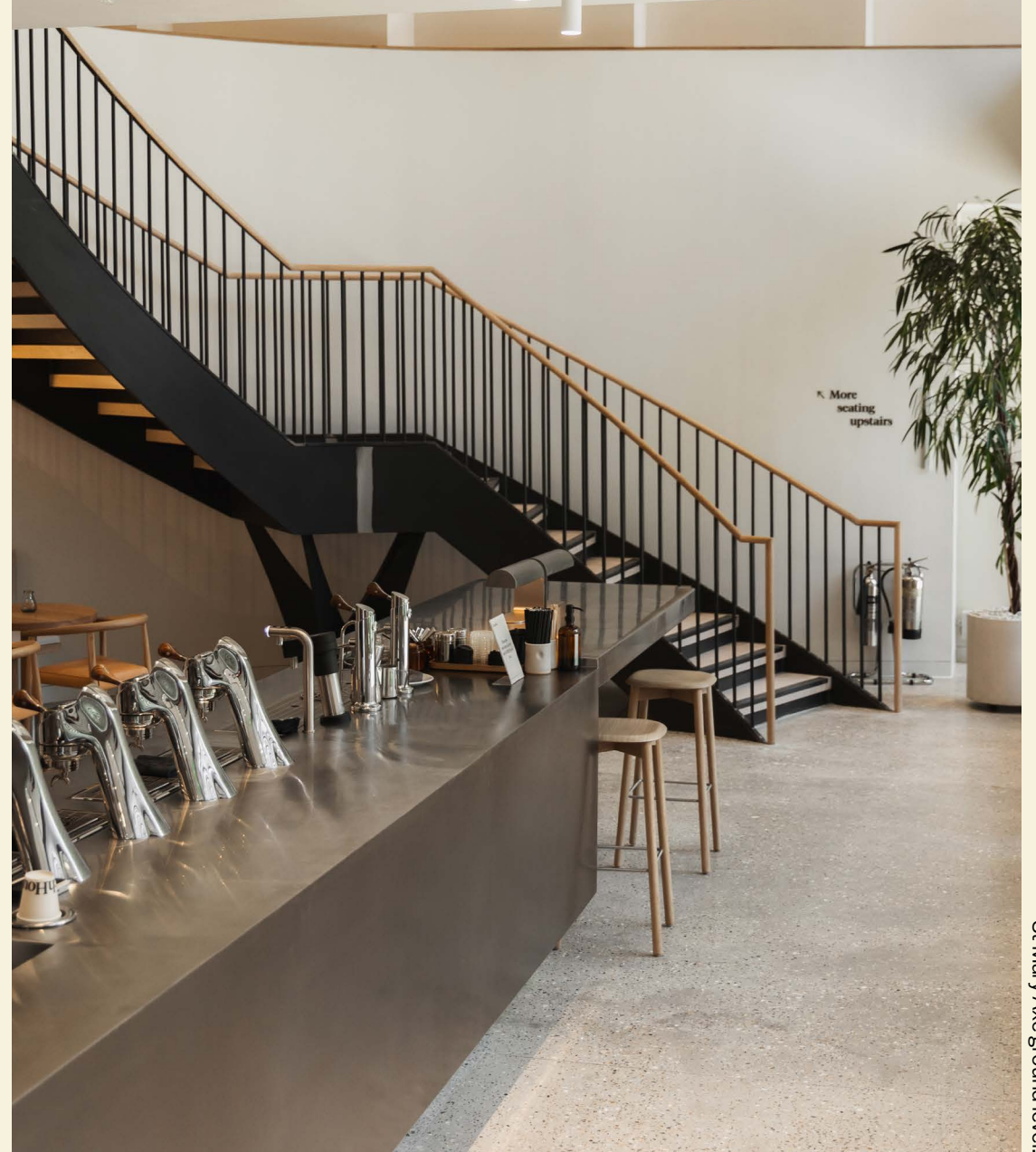
The Tree Room.

St Mary Axe.

A triple-level WatchHouse location based in the iconic Foggo designed 'Can of Ham' building in The City of London.

	Mezzanine
Capacity	32
2hrs	£1,120
Half day (4hrs)	£2,128
Full day (8hrs)	£3,808

Prices are subject to change and exclude VAT.



St Mary Axe ground level.





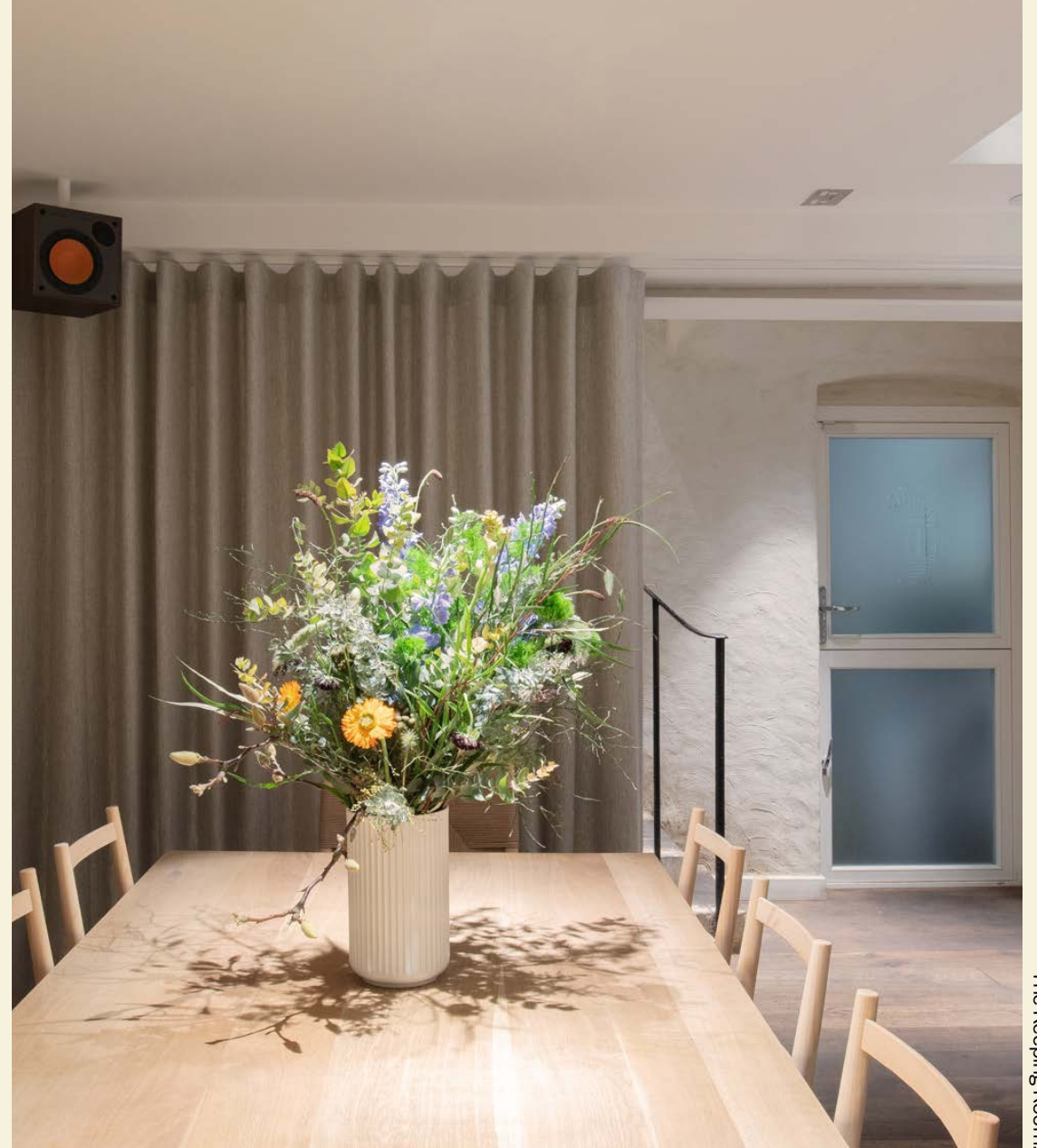
WatchHouse Spitalfields.

Spitalfields.

A stone's throw away from Brick Lane and our first foray into East London.

	The Keeping Room
Capacity	16
2hrs	£560
Half day (4hrs)	£1,064
Full day (8hrs)	£1,904

Prices are subject to change and exclude VAT.



Key features include soundproof curtains.

The Keeping Room.

The Roastery.

Our in-house roastery and the beating heart of the Modern Coffee experience.

	The Cafe
Capacity	20
2hrs	£700
Half day (4hrs)	£1,330

Prices are subject to change and exclude VAT.



The Cafe.



WatchHouse.

36

WatchHouse.

The Roastery.



Bath.

Our first House outside of London.

	The Gallery
Capacity	34
2hrs	£700
Half day (4hrs)	£1,400
Full day (8hrs)	£3,000

Prices are subject to change and exclude VAT.



The Gallery.

Off site events.

Espresso equipment hire. £250.00
Single group machine + x2 grinders

Delivery admin and set up. £350.00

Off site staff. £20.00 p/hr
Per hour | per person required
Minimum 2 staff
Minimum 1hr set up and 1hr pack up

Service charge *Discretionary 12.5%*



Offsite additional costs / prices subject to change based on requirements.



WatchHouse x On Running.



WatchHouse Rare Coffee event.



WatchHouse x On Running.

FAQs.

Allergens.

If you or a guest have a food allergy or special dietary requirements, please inform the team when placing your order. We can offer gluten free, vegetarian and vegan options available throughout the day.

Music and entertainment.

Guests are welcome to bring their own playlist to play through our auxiliary. DJs are allowed though we would kindly ask for notice in advance.

Off site catering.

We offer off site catering within the Somerset House estate for all our food and drinks packages. There is no service charge for this but an additional staffing fee may be added.

Deposit.

As per our policy, we ask that 50% of the booking fee is paid in advance. This deposit is non refundable, however it will be removed from your final bill. This can be paid over the phone or in person in house.



Service charge.

There is no service included on the rental fee or with the consumption. If bookings want drinks or table served instead of a buffet an additional 12.5% service charge is added on the overall cost.

