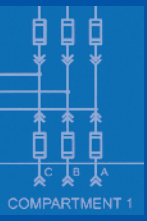


ENGRAVING SERVICES



Complete In-House Engraving Center

- Staffed by experienced engraving specialists
- Quick turnaround — average lead time 4 business days
- Wide variety of colors and materials — plastic, stainless steel, aluminum, brass
- Accurate reproduction of machine diagrams and schematics
- Custom plates, tags, labels, and legends made to your specifications



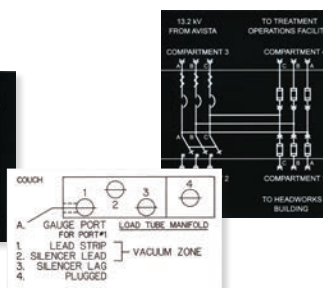
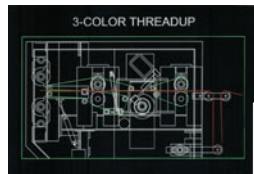
ENGRAVING SERVICES



Custom Plastic Plates

All plastic is UV stable with the exception of silver and gold

- **Standard Plastic**
- Engraved from the front
- **Reverse Engraved**
- Engraved from the back
- Easy to clean
- **Multi-Color Machine Thread Up Diagrams**
- **Schematic Plates (Electrical)**
- DXF file capability
- **Operational Instruction Plates**
- **Solar Panel Identification**
- **Warehouse Bin, Rack, and Storage Labels**
- **ATV License Plates**
- **Flexilase**
- Thin, flexible plastic great for bar codes and cylindrical devices



ATV Plates

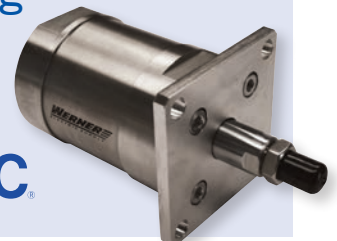
- Fast Turnaround: 3-4 Days
- Durable Plastic
- Convenient
- Meets all WI DNR Requirements

Part #:
PHEN ATV LICENSE
PLATE CUSTOM
ENGRAVED



Pneumatic Cylinder Identification Marking

Stainless steel only



Custom Metal Plates and Tags



- **Stainless Steel, Aluminum, and Brass**
 - Valve tags
- **DuraBlack**
 - Black coated aluminum specifically designed for harsh operating environments

Custom Metal Business Signage



- **Nametags**
- **Nameplates and Frames for Desks and Doors**
- **Policy Signs** (i.e. “No Smoking”)
- **Facility Signs** (Restroom/Directional)
- **Logos**

Custom Identification Plates

- **Legend Plates**
 - Pushbuttons/selecter switches/lens covers (22.5mm, 30.5mm, etc...)
 - Multiple manufacturer brands available
- **Operation Panel Fronts**
- **MCC Identification Plates**
- **Dials and Scales**
- **Machine and Equipment ID Tags**
- **Switch Plates**
 - Stainless, nylon, and plastic
- **Pneumatic Manifold Labels**
- **Arc Flash Labels**
- **Marker Cards**



Cable Identification Service

Werner Electric Supply can provide high quality, made-to-order, custom embossed marker plates. Using the Panduit Permanent Identification System, we can help speed installation time and reduce labor costs.

Embossing Service

- Used on rectangular metal marker plates which are a maximum of .020 inches (.5mm) thick, and minimum .038 inches (10mm) wide
- Excellent for applications that are exposed to dirt and paint
- Upper case “raised” characters
- Alphanumeric and sequential numbering



TREATMENT
IONS FACILITY

MPARTMENT 4



ENGRAVING SERVICES

- In-house engraving workshop
- Staffed by experienced engraving specialists
- Quick turnaround
- Wide variety of colors and materials
- Machine diagrams and schematics
- Custom plates, tags, labels, and legends
- Cable identification services

WERNER
ELECTRIC SUPPLY

866-4-WERNER • wernerelectric.com