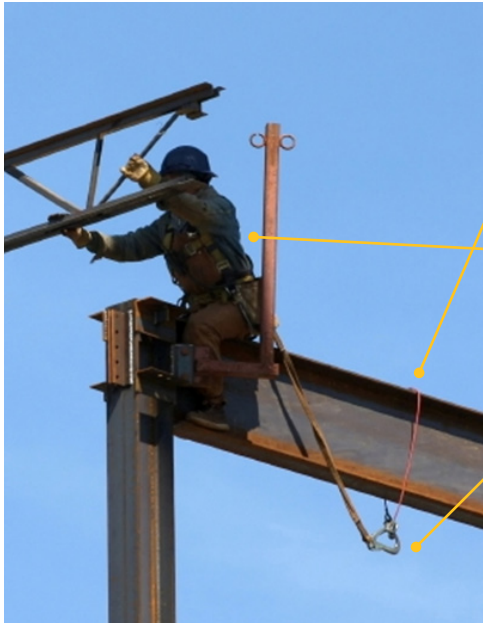


Fall Protection



ABCD's of a Fall Arrest System

Anchorage Device

Anchors are a secure point of attachment. Anchorage connectors vary by industry, job, type of installation, and structure. They must be able to support the intended loads and provide a sufficient factor of safety for fall arrest.

Body Protection

Body support is typically a full body harness. Harnesses distribute fall forces over the upper thighs, pelvis, chest, and shoulders. They provide a connection point on the worker for the personal fall arrest system when working at heights.

Connecting Device

Connectors such as shock absorbing lanyards or self-retracting lifelines connect a worker's harness to the anchorage.

Descent and Rescue

These are devices used to raise or lower a fallen, injured worker to safety or retrieve a worker from a confined space.

Body Support

Delta II™ Harness

Universal Size
Part # .2673009



ExoFit™ Vest-Style Harness

Various Sizes
(M) Part # .3773726
(L) Part # .2641579
(XL) Part # .3904461



Connecting Device

Nano-Lok™ 6' SRL

Part # .4071028



Protecta® Rebel 33' SRL

Part # .3994572



Anchorage

3' Cross Arm Strap

Part # .2673011



Glyder™ 2 Sliding Beam Anchor

Part # .3800489



Descent & Rescue

Trauma Strap

Part # .2641582



For questions or more information, contact a Werner Electric Safety Specialist:

Ben LeRoy: 920-815-4245 • bleroy@wernerelectric.com
John Casper: 920-815-4122 • jcasper@wernerelectric.com

Fall Protection Services

Self-Retracting Lifeline (SRL) Block Repair

As an Authorized Distributor of DBI Sala/Protecta, coordinate with Werner Electric for your SRL repairs, upgrades, and recertifications. Contact [ReturnsDept@wernerelectric.com](mailto>ReturnsDept@wernerelectric.com) with the Model and Serial numbers and we'll take care of the pick up, repair, and deliver back to you. It's that easy.

Annual Inspections

With several trained staff members, we can make your annual inspections easier. Werner Electric will visit your jobsite to inspect, evaluate, and report your findings. Our program will provide reminders each year and keep your records on file to make your inspections easier. Contact Ben LeRoy at bleroy@wernerelectric.com or John Casper at jcasper@wernerelectric.com to set up your inspection.



On-site Fall Protection Awareness Demonstrations

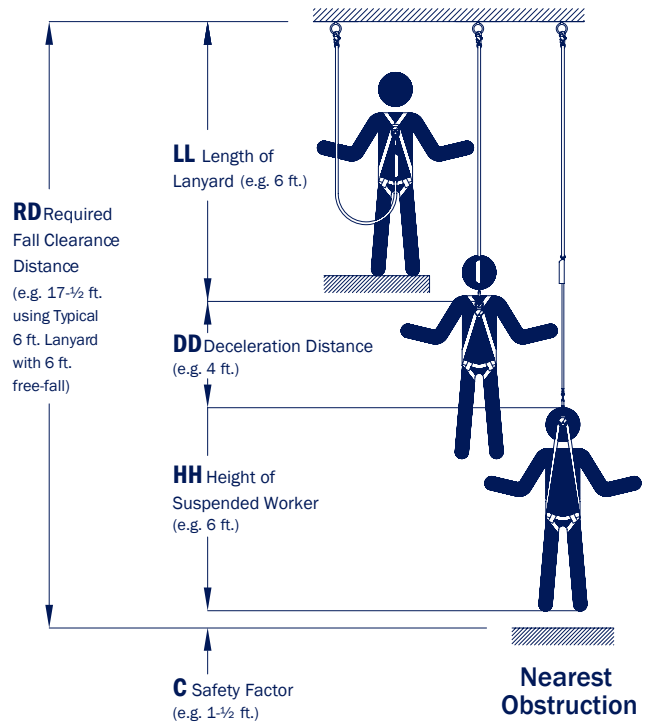
Key benefits of the fall protection awareness demonstration fleet

- Product safety training
- Training on-site
- Actual drop simulations
- Increase product awareness and knowledge
- Consulting services



OSHA mandates that at heights of 6 ft. or greater in construction and 4 ft. or greater in general industry, employers must select one of the options listed for work operations, if a fall hazard is present:

- Engineer the hazard out
- Guardrail systems
- Safety netting
- Fall arrest system (ABCD's)



Know your fall clearance

We recommend using a self-retracting lanyard when working 17-1/2 ft. or lower.



Fall Protection
for Tools



For questions or more information, contact a Werner Electric Safety Specialist:

Ben LeRoy: 920-815-4245 • bleroy@wernerelectric.com
John Casper: 920-815-4122 • jcasper@wernerelectric.com