



Is your Electrical Equipment Protected by IP69/69K Rated Products?

Hoffman HyShed Enclosure

HMI (Human Machine Interface)

Pushbuttons

Wire Entry Devices

Robots

Building Lighting

Linear Actuators

Servo Motors & Gearboxes

Flexible Conduit & Fittings

Connectors, Plugs
& Disconnects

Labels

Protect your electrical equipment from high pressure,
high temperature washdowns with products that have been
tested and proven for food and beverage applications.

Enclosures



HyShed Enclosure

- Replaceable, FDA-approved blue silicone gasket
- Internally mounted hinges reduce bacteria catch points
- Hygienic latching mechanisms
- 3-A System Component Qualification Certificate



Stainless Steel Drain Adaptor



ABB Stainless Steel Drain Adaptor

- NSF Certified for food and beverage applications
- UL Type 4X and IP69 rating offered when drain adaptor used in conjunction with T&B valve
- Both adaptor and valve constructed of Type 316 Stainless Steel for superior corrosion resistance
- Compact body design and special-grade silicone gasket make the drain adaptor suitable for installation in tight spaces and on curved surfaces
- Large drain orifices, an integral breather, and no moving parts ensure long-lasting performance without clogging



HMI (Human Machine Interface)



HyShed Pushbutton Enclosure

- Enclosures can be modified at Werner Electric to accept Rockwell Automation 800K piezoelectric pushbuttons to maintain IP69/69K rating
- Available as enclosure with pushbuttons already installed
- Enclosures can be ordered separately without pushbuttons
- Available in 30.5mm or 22.5mm, with 1, 2, 3, 4, 5, or 6 holes



Hoffman – Syspend

- 20-degree sloped top facilitates run-off of water and cleaning solutions
- Fully concealed gasket for complete washdown protection
- Integrated side handles allow for easy repositioning of enclosures



Rockwell Automation

- 304 stainless steel bezels
- Replaceable, FDA-approved blue silicone gasket
- Conformal-coating available for all touch-only terminals and keypads
- NSF certified



Pushbuttons



Rockwell Automation Pushbuttons

- Minimize production loss due to cleaning procedures
- Corrosion resistant to caustic washdown solutions
- Smooth, crevice-free button surface decreases bacteria growth potential



Wire Entry Devices



Roxtec Cable Entry Seals

- Able to withstand extreme temperatures
- Protection for equipment against caustic solutions in wet environments
- Safeguard in high pressure/high temperature washdown areas
- Low profile frame
- Seals multiple cables and pipes in one opening
- Pass pre-terminated cables without cutting off connectors
 - Maintain integrity of connection
 - Shorten installation time
 - Reduce installation costs
- Easy re-entry into the system for changes or upgrades



Murrplastik Type KDL/H Cable Entry System

- High packing density
- Extremely small footprint
- Tool-free assembly
- Kink-free cables and hosing

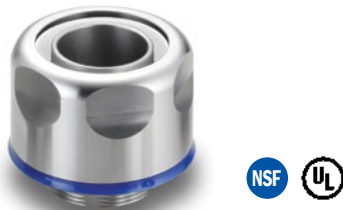


Conduit Fittings



ABB Cable Glands – FSCG Series

- NSF approved food and beverage cable glands
- Allows hygienic termination of cables into equipment



Liquid-tight Conduit Fittings

- Unique, one-piece fitting made from Type 316 stainless steel
- FDA compliant seal materials
- IP67, IP68 and IP69 protection
- UL listed to UL 514B
- NSF 14159-1-2014 and NSF 169-2009 standards

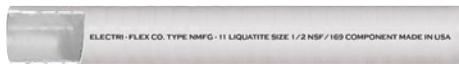


Flexible Conduit



Adaptflex® Bacteria-resistant Cable Protection Solution

- Protects complex processing equipment with sensitive electrical wiring systems, controls and automation
- IP69 rating for high pressure, high temperature washdown applications



Type NMFG Food Grade Nonmetallic Liquidtight Conduit

- Excellent protection to wiring from abrasion, sunlight, mild acids, alkaline and oils.
- Smooth exterior for easy wash down
- Resistant to Bleach (Sodium Hypochlorite)
- Will not promote bacteria growth



Type LSSFG Liquidtight Stainless Steel Flexible Conduit

- Non-uL
- Provides a liquidtight flexible protective wiring raceway
- Smooth exterior for easy washdown
- Resistant to Sodium Hypochlorite (Bleach)
- Will not promote bacteria growth



Indicator Lights



- Available in 24VDC and 120-240VAC 50/60Hz
- LED has 8 on-board flash patterns, factory default is flashing at 60 FPM
- Optional indicator rings in six colors: Black, Blue, Green, Magenta, Red and Yellow
- UL and cUL Listed for Class I, Division 2, Groups A, B, C and D; Class II, Division 2, Groups F and G; Class III



Connectors



Russellstoll DuraGard Waterproof Connections

- 30 amp standard service
- IP69K washdown pin and sleeve quick disconnect



Hubbell Watertight Wiring Devices

- NSF certified
- Patented Gotcha® ring and collapsible bushing yields the industry's best strain relief
- Triple bypass seal keeps water away from electrical connections
- Replacement components available to keep MRO costs down



LEVITON Wetguard® Plug & Connector

- Constructed of impact modified nylon and receptacles and inlets made of PBT
- Available with alternate screwless clamp or power indication with Inform™ Technology
- Nickel-plated brass pins and sleeves for added corrosion-resistance
- NSF certified sanitary design for use in food and beverage facilities



HARTING Han® F+B

- Reduces downtime
- Faster than hard-wired solutions
- One type of hood or housing
- Degree of protection: IP67 or IP69K
- Enables the modularization of machines
- Reduces cost of installation and maintenance

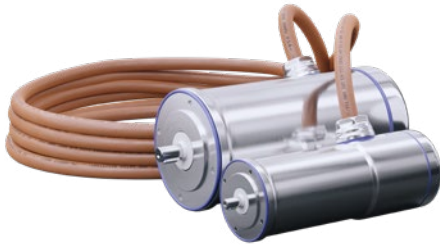


Woodhead Watertite Extreme Wiring Devices

- The unique Advanced Vulcanized Silicone Rubber husk inhibits bacterial growth
- Exceptional durability
- NSF certified, UL Listed, CSA Certified, UV Stable
- Maintains flexibility and sealing qualities in extreme temperatures, demonstrated by IP67, IP69K, NEMA Type 4X and 6P ratings



Servo Motors



Rockwell Automation

- NSF, 3A, and EHEDG certified
- 6 Frame Sizes from 63-165mm
- For use with Kinetix 5500 & 5700 Drives
- Peak Torque 73.5 Nm, Speeds up to 8000 RPM



Wittenstein Cyber Dynamic Line Servo Motor

- Meets EHEDG Standards
- 40mm Frame Size
- 48 VDC
- Peak Torque of .96 Nm, Speeds up to 5575 RPM



Gearboxes



Wittenstein HDV / HDP Servo Gearbox

- Hygienic Design meets FDA, 3-A, and EHEDG Standards
- Food Grade Lubrication
- No Dead Spaces



Actuators



LinMot Stainless Steel Linear Actuators

- Hygienic Design
- Welded Connections, No Gaskets
- Optional Water Cooling
- Forces up to 490 lbf, Velocities up to 4.6 m/s



Robotics



Codian Stainless Steel Delta Robots

- Work Envelopes ranging from 500mm to 1600mm
- 3kg and 15kg Payload Models
- Select Models Support Rockwell VPH Motors
- Entirely bare 316L Stainless Steel Body



Disconnects



Hubbell InSIGHT Disconnect

- NSF certified
- Secondary means of visual confirmation on all phases
- Permanent labelless design
- Provides critical troubleshooting information such as welded contact or dropped phase



Hubbell Advantage Series Pin & Sleeve

- Switch-rated disconnect available in receptacle or connector body
- Available in 30, 60 and 100A
- Power indicating LEDs provide visual verification of power when connected
- Permanent labelless design



Meltric Plugs and Receptacles

- Automatic watertight connection
- Provides the safety of a switch
- Ensures arc flash protection
- Enables quick equipment changeouts
- Rated up to 200 amps, 600 volts and 100 hp



Leviton Powerswitch® Stainless Steel Disconnect Switches

- 3/4" standoff from mounting surface allows for easy cleaning
- NSF Certified and IP69K rated
- Overmold handle provides firm grip in wet environments
- Type 304 stainless steel resists corrosion, heat and abuse



Building Lighting



Holophane EMX LED

- Available in 2' length 3,000-9,000 lumens and 4' length 6,000-18,000 lumens
- Standard ceiling mount bracket with optional surface wall or angle brackets and suspension kits
- DLC configurations available for Focus on Energy Rebates
- Optional standalone controls and network controls available



Holophane Vantage LED

- Wide range of lumen packages ranging from 12,000-32,000 lumens
- Multiple lens materials and distributions
- Standard 0-10V dimming driver
- Optional standalone controls and network controls available



Lithonia FHE LED

- Available in 2' length 9,000-24,000 lumens and 4' length 18,000-40,000 lumens
- Multiple lens materials and distributions
- Optional standalone controls and network controls available
- DLC configurations available for Focus on Energy Rebates

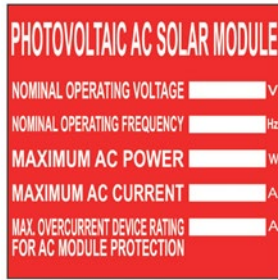


Metalux VT4S LED

- Compact and durable fibreglass reinforced polyester housing
- Clear or frosted lens made from acrylic or high impact polycarbonate
- 2ft housing delivers up to 18,000 lumens
- DLC configurations available for Focus on Energy Rebates

Metalux

Labels



Super-Tack Polyester Solar Labels

- Thermal transfer solar labels meet required safety standards for PV installation labeling
- Outdoor rated, designed with high resistance to direct UV exposure
- Meets DIN 40050-9
- UL969 recognized. File #MH14979, cUL recognized. C22.2 No 0.15.01 File # MH14979

PANDUIT



Raised Panel Component Labels

- Raised thermal transfer printable surface with high-tack adhesive for strong holding power
- Meets DIN 40050-9
- Meets ASTM G154 for outdoor durability (simulating 20 years of UV resistance under normal conditions)
- UL969 recognized. File #MH14979, cUL recognized. C22.2 No 0.15.01 File # MH14979

PANDUIT



Raised Panel Pre-Printed Emergency Stop Labels

- The look of engraved laminated plates with the convenience of printing on demand
- Strong holding power for rough, textured and powder coated surfaces
- Meets DIN 40050-9
- UL 969 recognized. File # MH14576; cUL recognized C22.2 No. 0.15.01 File # MH14576

PANDUIT

Wall Spacers



SuperClean™ Bacteria-resistant Wall Offset Spacers

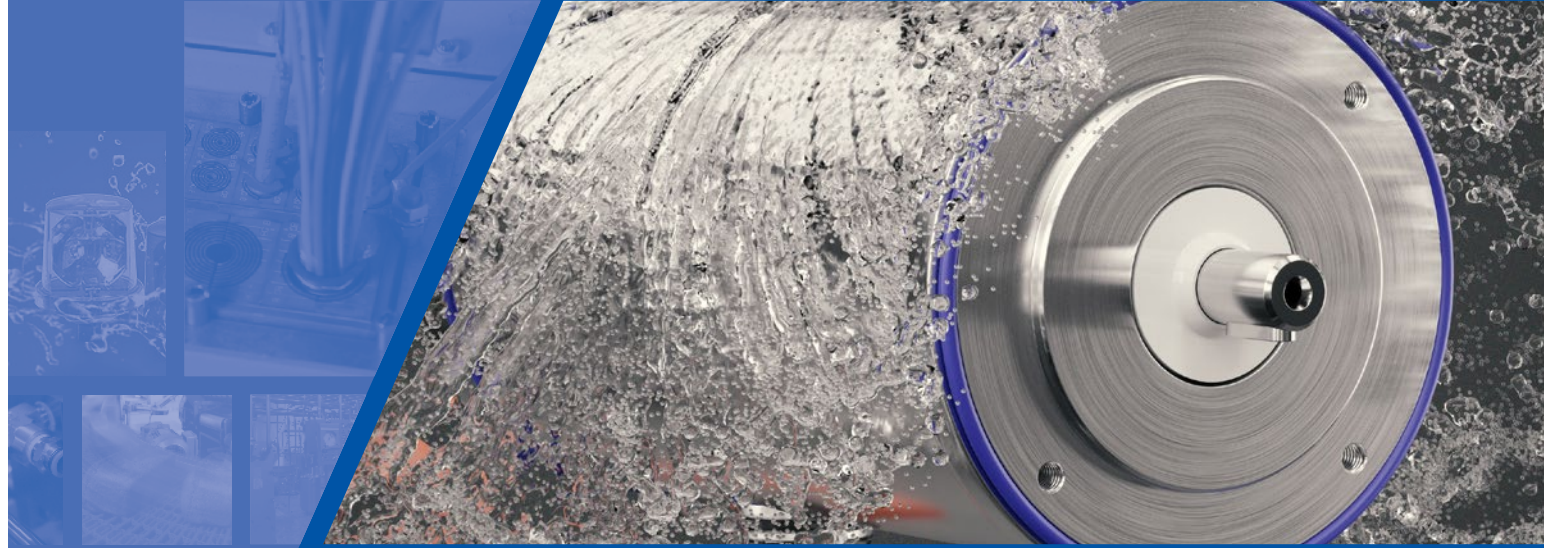
- The industry's first wall offset spacers that inhibit bacterial growth on the spacer surface
- Made from FDA-compliant nylon resin
- Cylindrical design with no exposed flat surfaces to prevent the collection and retention of liquids or debris
- Promotes a clean environment – 99.9% effective for bacterial reduction on the spacer surface
- Easy to install with no on-site fabrication required

ABB

Vendor Partners Supplying IP69/69K Rated Products



To learn more about Werner Electric Supply's complete portfolio of IP69K sanitary washdown solutions, contact your Werner Electric Account Representative, or visit WernerElectric.com.



IP69/69K RATED PRODUCTS

WERNER
ELECTRIC SUPPLY

866-4-WERNER • WernerElectric.com