



Stocked, prefabricated,
and delivered directly
to your job site!

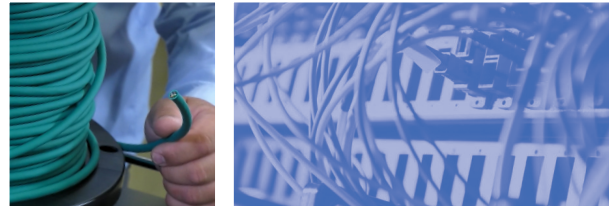
Panduit® IndustrialNet™ Category 6A Solutions



Purchase this game-changing, end-to-end solution for all your Industrial Ethernet Communication Networks.

Panduit IndustrialNet™ solutions can meet demanding industrial conditions including high vibration, caustic chemicals and vapors, wash down, and radiation, while maximizing uptime and reducing repair and replacement costs.

Additionally, Werner Electric Supply's field terminable solutions can save you time and money by pre-cutting your cable to job specified lengths and prefabricating your assemblies with termination plugs and patch cords. With our job site delivery program, you just grab and install the pre-cut, pre-assembled parts.



Structured Cable

IndustrialNet™ Category 6A 4-Pair SF/UTP Copper Cable

CUT TO ORDER



IndustrialNet™ Category 6A SF/UTP Copper Cable provides reliability and high performance as an integral component of the end-to-end solution for industrial Ethernet based communications networks. The 4-pair high performance cable ensures highest availability in conditions seen in industrial environments.

- Meets/exceeds IEC 61156-6, ANSI/TIA-568-c.2 Category 6A and ODVA Ethernet/IP standards up to 80 meters
- Four pairs of 24/7 AWG and 26/7 stranded copper insulated with high density polyethylene (HDPE) insulation
- Thermoplastic elastomer (TPE), oil, sunlight, weld splatter, and abrasion resistant for enhanced chemical resistance and mechanical performance
- Flame retardant (CMX/CM) for Industrial Ethernet applications

Product Description	Werner No.	Panduit No.	Availability
24/7 AWG CMX/CM 4-pair, Teal	.4256450	ISFCH6X04ATL-UG	In Stock
24/7 AWG CMX/CM 4-pair, Black	.4282221	ISFCH6X04BL-UG	Custom Order

Cable Prep Tools

Copper Conductor Snipping Tool



Cuts conductors flush for improved performance.

- Flush cuts soft wire up to 14 AWG (1.6 mm)
- Lead retainer helps prevent flying leads and component shorting from stray leads
- Extra long ergonomic rubber grips reduces pressure on operator's hand

Product Description	Werner No.	Panduit No.	Availability
Snipping Tool	.1687242	CWST	In Stock

Cable Jacket Stripping Tool



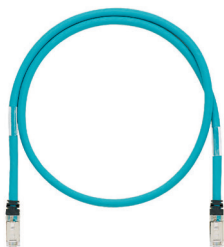
Adjustable cable jacket stripping tool strips outer jacket of 4-pair UTP and shielded copper cable.

- 9 position adjustment wheel with indicator
- Strips insulation up to 0.040 in. (1.0 mm) of cable
- Strip range 0.1–0.43 in. (2.5–11.0 mm)

Product Description	Werner No.	Panduit No.	Availability
Stripping Tool	.1687244	CJAST	In Stock
Replacement Blade Kit	.4282215	CJASTB	Custom Order

Connectivity

IndustrialNet™ Category 6A Shielded 600 V-Rated Patch Cords



IndustrialNet™ Patch Cords provide an ideal solution to support Industrial Ethernet from the Local Area Network (LAN) based support offices to the processing devices on the plant floor.

- Industrial grade, 26 AWG stranded, twisted 4-pair shielded SF/UTP cable with flame retardant (CMR) thermoplastic elastomer (TPE) jacket
- Pre-terminated to include Category 6A RJ45 shielded modular plugs on each end, with a black strain relief boot, and wired
- Rated for panel or on-machine applications when the space is shared with 600V high voltage power cables

Product Description	Werner No.	Panduit No.	Availability
CM/CMX, teal	.4256539	*ISTPH6X1MTL	Custom Order
CM/CMX, black	.4282219	*ISTPH6X1MBL	Custom Order

*For other lengths, change the length designation (1M) of the part number to the desired standard length (0.3M, 0.6M, 1M, 1.5M, 2M, 2.5M, 3M, 3.5M, 4M, 4.5M, 5M, 7M, 10M, 15M, or 20M).

IndustrialNet™ 8-Port DIN Rail Mount Copper Patching Solution



These structured cabling solutions are important as Ethernet reaches further into the industrial automation network, enabling traditional IT departments to manage change in the industrial network through the use of familiar patching facilities and structured cabling models.

- High impact polycarbonate material
- Mounts to a standard 35 mm DIN rail or mountable using holes in latches
- Dual purpose, audible snap-in mounting latches
- Removable faceplate with four label pockets, labels and covers for port identification

Product Description	Werner No.	Panduit No.	Availability
8-port DIN Panel	.3949971	CDPP8RG	In Stock
8-port Shielded DIN Panel	.4277222	CDPP8RG-S	In Stock

Connectivity Continued

Mini-Com® DIN Rail Mount Adapter



DIN rail mount adapter allows any single module space Mini-Com® Module to securely mount to a standard 35mm DIN rail, providing an easy way to quickly move, add or change a connection, with no specialized tools required.

- Includes label pocket, label and cover for easy identification

Product Description	Werner No.	Panduit No.	Availability
International Gray	.3913286	CADIN1IG	In Stock
White	.3970002	CADIN1WH	Custom Order
Off White	.4147590	CADIN1IW	Custom Order
Black	.3910715	CADIN1BL	In Stock
Electric Ivory	.3970658	CADIN1EI	Custom Order

IndustrialNet™ M12 X-Code Category 6A Overmolded Cordsets



IndustrialNet™ M12 X-Code Category 6A Overmolded Cordsets provide fast, reliable connections from machines and devices to switches and enclosures on the plant floor for Ethernet, PROFINET, Modbus and EtherCAT.

- TPU and TPO jackets protect against weld splatter, chemicals and abrasions
- Industrial grade, stranded, twisted pair cable construction
- IP/NEMA/UL/CE rating ensures reliability in harsh factory
- Pre-terminated and overmolded with Category 6A M12 or RJ45 industrial plugs environments

Product Description	Werner No.	Panduit No.	Availability
M12 bulkhead female X-code, STP, Black	.4246479	ICX45T1NBL0.5M	Custom Order
M12 bulkhead female X-code, RJ45 Plug, STP, Black	.4280405	*ICX44T1NBL1M	Custom Order
M12 male to male X-Code, straight connector, STP, Teal	.4246485	*ICX11T1NTL1M	Custom Order
M12 X-Code Field Terminable Plug	.4264356	ISPS6A88MFA	In Stock

*For other lengths, change the length designation (1M) of the part number to the desired standard length (2M, 3M, 5M, 10M, 15M or 20M).

IndustrialNet™ Category 6A/6/5e RJ45 Field Terminable Plug



IndustrialNet™ Category 6A RJ45 Field Terminable Plug provides an ideal solution to support Industrial Ethernet from the Local Area Network (LAN) based support offices to the processing devices on the plant floor, for applications up to and including 10GBASE-T Ethernet.

- Meets/exceeds the component requirements of the ANSI/TIA-568-C.2 Category 6 and Category 5e, ISO 11801 Class E and Class D, and ODVA Ethernet/IP, PROFINET, and CC-Link standards
- Robust zinc die cast housing with 360° shielding
- Extended temperature range of -40 to 85°C (-40 to 185°F)

Product Description	Werner #	Panduit #	Availability
1.0–1.6 mm / 0.039–0.063 in. insulation diameter	.4022834	ISPS688FA	In Stock
0.85–1.0 mm / 0.033–0.039 in. insulation diameter	.4048260	ISPS688FAS	Custom Order
TX6A™ Shield Field Term Plug	.4275358	FPS6X88MTG	Custom Order

Mini-Com® TX6A™ 10Gig™ Shielded Jack Modules



Mini-Com® TX6A™ 10Gig™ Shielded Jack Modules are a component of the TX6A™ 10Gig™ Shielded Copper Cabling System. This shielded system provides high performance, excellent EMI suppression and aids in secure data transmission.

- Ground shielding provides seamless bonding, snaps in for easy changes
- 8-position, shielded jack modules terminate 4-pair, 22–26 AWG, 100 ohm shielded twisted pair cable
- Universal label is coded for T568A/T568B wiring schemes for traceability

Product Description	Werner #	Panduit #	Availability
Black	.3873395	CJS6X88TGY	In Stock
Blue	.4098435	CJS6X88TGBUY	Custom Order
Red	.4143404	CJS6X88TGRDY	Custom Order
White	.4282226	CJS6X88TGWHY	Custom Order
Yellow	.4282227	CJS6X88TGPLY	Custom Order
Green	.4143405	CJS6X88TGGRY	Custom Order
Violet	.4250638	CJS6X88TGVLY	Custom Order

For more information about our IndustrialNet™ Category 6A inventory, cut to order capabilities, prefabrication, or job site delivery contact your local Werner Electric Supply representative.

Locations



Northwest, Northeast, and Southwest WI Region Branches

Appleton

4800 W. Prospect Ave.
Appleton, WI 54914
Phone: 920-815-4050
Fax: 920-815-4060

Green Bay

3055 Holmgren Way
Green Bay, WI 54304
Phone: 920-337-6700
Fax: 920-337-6710

Janesville

1000 N. Parker Dr.
Janesville, WI 53545
Phone: 608-752-9496
Fax: 608-752-5810

Stevens Point

2728 Church St.
Stevens Point, WI 54481
Phone: 715-344-6385
Fax: 715-344-0199

Fond du Lac

1301 Capital Dr.
Fond du Lac, WI 54937
Phone: 920-924-4500
Fax: 920-924-4510

Iron Mountain

1400 Breitung Ave.
Kingsford, MI 49802
Phone: 906-779-5040
Fax: 906-779-5033

Madison

4428 Pflaum Rd.
Madison, WI 53716
Phone: 608-221-0090
Fax: 608-221-4559

Wausau

7900 Highland Dr.
Wausau, WI 54401
Phone: 715-845-8808
Fax: 715-845-6545

Southeast WI Region Branches

Kenosha

4611 68th Ave.
Kenosha, WI 53144
Phone: 262-997-6225
Fax: 262-997-6226

Pewaukee

W238 N1777 Rockwood Dr.
Pewaukee, WI 53188
Phone: 262-436-5676
Fax: 262-436-0667

Sheboygan

4630 S. Taylor Dr.
Sheboygan, WI 53081
Phone: 920-694-3300
Fax: 920-694-3301



WERNERELECTRIC.COM • 866-4-WERNER