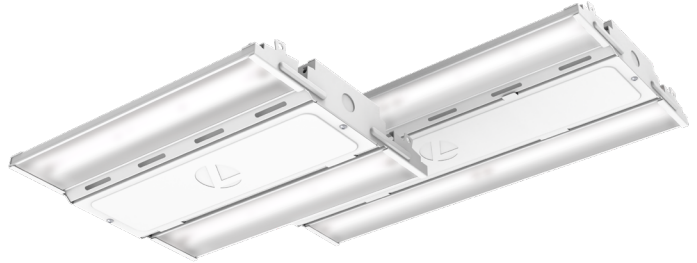




Catalog Number
Notes
Type

Contractor Select™
COMPACT PRO™
 LED High Bay



The Compact Pro High Bay (CPHB) is a budget-oriented high bay designed specifically with the contractor in mind. Its compact design makes it easier and quicker to install. Compact Pro is built with quality to last and performance to meet the needs of the job, making it the best choice for affordable and reliable light-duty industrial applications like warehouses.

FEATURES:

- Compact design saves time and money during installation
- Innovative Glare Control lens meets new DLC 5.1 standards
- Robust 6kV surge protection standard per ANSI standards for Industrial environments
- Operates up to 55°C ambient
- Includes mounting hardware (V-hook & 36" hanger chain)



Catalog Number	UPC	Description	Lumens	Input Watts	Color Temperature	Color Rendering	Voltage	Distribution	Pallet Qty.
CPHB 12LM MVOLT 40K	00194994608325	14" LED High Bay	12,261	88	4000 K	80 CRI	120-277V	Medium	204
CPHB 12LM MVOLT 50K	00194994429548	14" LED High Bay	12,342	88	5000 K	80 CRI	120-277V	Medium	204
CPHB 15LM MVOLT 40K	00194994429562	14" LED High Bay	14,857	104	4000 K	80 CRI	120-277V	Medium	204
CPHB 15LM MVOLT 50K	00194994429593	14" LED High Bay	14,955	104	5000 K	80 CRI	120-277V	Medium	204
CPHB 18LM MVOLT 40K	00194994608295	14" LED High Bay	18,364	134	4000 K	80 CRI	120-277V	Medium	204
CPHB 18LM MVOLT 50K	00194994429630	14" LED High Bay	18,485	134	5000 K	80 CRI	120-277V	Medium	204
CPHB 24LM MVOLT 40K	00194994429685	22" LED High Bay	24,890	174	4000 K	80 CRI	120-277V	Medium	102
CPHB 24LM MVOLT 50K	00194994429753	22" LED High Bay	25,054	174	5000 K	80 CRI	120-277V	Medium	102
CPHB 30LM MVOLT 40K	00194994429746	22" LED High Bay	30,298	214	4000 K	80 CRI	120-277V	Medium	102
CPHB 30LM MVOLT 50K	00194994429784	22" LED High Bay	30,498	214	5000 K	80 CRI	120-277V	Medium	102
CPHB AL013 MVOLT SWW9 80CRI DWH	00196183428561	14" LED High Bay	12000/15000/18000	89/115/140	4000K/5000K	80CRI	120-277V	Medium	204
CPHB AL016 MVOLT SWW9 80CRI DWH	00196183428578	22" LED High Bay	24000/27000/30000	177/205/222	4000K/5000K	80CRI	120-277V	Medium	102

More configurations are available. [Click here](#) or visit www.acuitybrands.com and search for CPHB.

Accessories: Order as separate catalog number.	
Mounting:	Wire guards:
IBAC120 M100 Aircraft cable 10' with hook (one pair)	WGCPHB5M Wire guard for CPHB (9LM - 18LM)
IBAC240 M75 Aircraft cable 20' with hook (one pair)	WGCPHBMD Wire guard for CPHB (24LM - 30LM)
IBHMP Hook monopoint	
CPHBPMPSM Pendant Monopoint splice box with 3/4" hub (for 9LM - 18LM) ‡	
CPHBPMPMD Pendant Monopoint splice box with 3/4" hub (for 24LM - 30LM) ‡	
ZACVH Aircraft 10' V hanger (one pair)	
THUN J2 Surface mount bracket ‡	

‡ Option Value Ordering Restrictions	
Option value	Restriction
CPHBPMPSM/MD	Pendant monopoint splice boxes will require wiring from access plate to splice box KO if power is being dropped through pendant conduit. Fixture does not have a KO in center to pull power out of driver channel through splice box
THUN J2	Order quantity required in multiples of 2. 12LM - 18LM requires one per fixture, 24LM - 30LM require two per fixture.



Specifications

INTENDED USE:

Ideal one-for-one replacement of conventional lighting systems such as HID and fluorescent. For use in light Industrial applications such as warehousing and other large indoor spaces with mounting heights ranging from 10' - permitted. **Certain airborne contaminants can diminish integrity of acrylic and/or polycarbonate.** [Click here for Acrylic-Polycarbonate Compatibility table for suitable uses.](#) **Certain airborne contaminants may adversely affect the functioning of LEDs and other electronic components, depending on various factors such as concentrations of the contaminants, ventilation, and temperature at the end-user location.** [Click here for a list of substances that may not be suitable for interaction with LEDs and other electronic components.](#)

CONSTRUCTION:

Extruded aluminum channels enable superior thermal performance. Glare Control Lens diffuses light source and reduces glare while protecting LEDs. Lens meets DLC 5.1 standards for UGR (Unified Glare Rating) Available in two sizes with optional switchable lumens (12000/15000/18000 or 24000/27000/30000) and color temperatures (4000K/5000K).

ELECTRICAL:

70% lumen maintenance at > 100,000 hours. Thermally protected driver standard with 0-10V dimming. Luminaire surge protection level: designed to withstand up to 6kV/3kA per ANSI C82.77-5-2015. Multi-volt driver, 120-277V standard.

INSTALLATION:

Fixture package includes V-hanger hardware kit with 2- V-hanger brackets and 2- 36" chain lengths. Fixture is suitable for mounting by chain, cable, surface-mount bracket, or hook monopoint. Surface mounting available using optional THUN surface mount bracket (order separately). Designed for use in ambient temperatures ranging from -40°C to 55°C when suspended 18" off ceiling. Max operating temperature of 45°C when surface mounted.

LISTINGS:

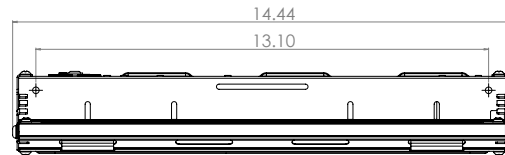
CSA listed. Damp location listed. DesignLights Consortium® (DLC) Premium qualified product. Not all versions of this product may be DLC Premium qualified. Please check the DLC Qualified Products List at www.designlights.org/OPL to confirm which versions are qualified.

WARRANTY:

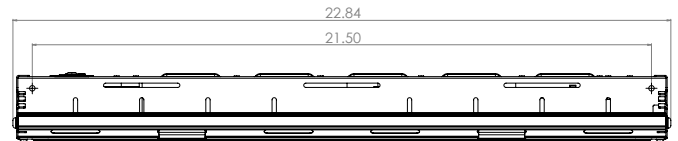
5-year limited warranty. This is the only warranty provided and no other statements in this specification sheet create any warranty of any kind. All other express and implied warranties are disclaimed. Complete warranty terms located at: www.acuitybrands.com/support/warranty/terms-and-conditions **Note:** Actual performance may differ as a result of end-user environment and application. All values are design or typical values, measured under laboratory conditions at 25 °C. Specifications subject to change without notice.

Dimensions

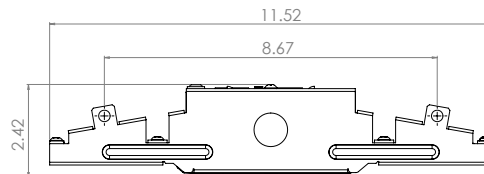
All dimensions are inches (centimeters) unless otherwise indicated.



Side View: CPHB 12LM, 15LM, 18LM, ALO13



Side View: CPHB 24LM, 30LM, ALO16



End View: CPHB 12LM, 15LM, 18LM, 24LM, 30LM, ALO13, ALO16

Lumen package	Length	Width	Depth	Weight
	Dimensions shown in inches (centimeters)			Shown in pounds (kg)
12000LM	14.4 (36.6)	11.5 (29.2)	2.3 (5.8)	5 (2.2)
15000LM	14.4 (36.6)	11.5 (29.2)	2.3 (5.8)	5 (2.2)
18000LM	14.4 (36.6)	11.5 (29.2)	2.3 (5.8)	6.5 (2.9)
24000LM	22.8 (57.9)	11.5 (29.2)	2.3 (5.8)	8 (3.6)
30000LM	22.8 (57.9)	11.5 (29.2)	2.3 (5.8)	8 (3.6)
ALO13	14.4 (36.6)	11.5 (29.2)	2.3 (5.8)	6.6 (3.0)
ALO16	22.8 (57.9)	11.5 (29.2)	2.3 (5.8)	8.1 (3.7)

Nomenclature	Lumen Package	CCT	Lumens	Wattage	Efficacy
CPHB ALO13 MVOLT SWW9 80CRI DWH	12000LM	4000K	12272	89	138
		5000K	12465	89	140
	15000LM	4000K	15117	112	135
		5000K	15248	112	136
	18000LM	4000K	18265	138	132
		5000K	18395	138	133
CPHB ALO16 MVOLT SWW9 80CRI DWH	24000LM	4000K	24193	176	138
		5000K	24415	177	138
	27000LM	4000K	27345	202	135
		5000K	27679	204	136
	30000LM	4000K	29578	221	134
		5000K	29755	222	134