

FEATURES & SPECIFICATIONS

INTENDED USE — The 4" and 6" Wafer™ LED Gimbal with Switchable White provides high-quality light output and efficiency featuring a switch for easy color temperature adjustment - while eliminating the need for recessed housings. The innovative, slim design allows for easy retrofit, remodel or new construction installation from below the ceiling. The LED module maintains at least 70% light output for 50,000 hours. The Wafer LED Gimbal is wet location listed – making it ideal for use in a breadth of outdoor residential, hospitality, commercial and multifamily applications.

CONSTRUCTION — Aluminum die cast outer frame. Durable, powder coat paint to prevent rust. FT4 plenum rated cable connector to connect from module to remote driver box. IC rated driver with convenience and value of two remote selectable color temperature options, each with a setting choice to choose either 3000K, 4000K, and 5000K using the switch. The isolated driver integrated inside steel remote box with four 7/8" knockouts with slots for pryout. Suitable for pulling wires with the 12 cubic-inch wiring compartment to accommodate up to (6) 14 gauge insulated conductors, or (4) 12 gauge insulated conductors; making the Wafer LED Downlights much easier to wire in 2in/2out (plus ground) daisy-chain applications and contractor friendly.

INSTALLATION — Ideal for shallow ceiling plenum; no housing required. Steel spring clip for easy installation. 4" or 6" cut out template is provided to ensure a correct sized hole is cut into ceiling for proper installation of the trim. Size of hole should not exceed 4 1/4 inches (WF4) or 6 1/4 inches (WF6) for this product. Suitable for installation in t-grid and drop ceiling applications. 3" plenum space required for installation of the remote driver box.

OPTICS — Polycarbonate lens provides even illumination throughout the space (lens can be tilt up to 20 degree and rotate up to 180 degree).

ELECTRICAL — Connect directly to 120V power supply via provided UL recognized driver. High efficient driver with power factor > 0.9. Ambient operating temperature: -40°F (-40°C) to +104°F (+40°C). Dimming down to 10% with most standard incandescent dimmers (see list of approved dimmers). Replaces 50W incandescent (WF4) or 75W incandescent (WF6).

LISTINGS — CSA certified to US and Canadian safety standards. ENERGY STAR® certified. Suitable for wet location, covered ceiling. Air Tight certified in accordance with ASTM E283-2004. NOM Certified. Can be used to comply with California Title 24 Part 6 High Efficacy LED Light Source Requirements.

WARRANTY — 5-year limited warranty. This is the only warranty provided and no other statements in this specification sheet create any warranty of any kind. All other express and implied warranties are disclaimed. Complete warranty terms located at:

www.acuitybrands.com/support/warranty/terms-and-conditions

Note: Actual performance may differ as a result of end-user environment and application. All values are design or typical values, measured under laboratory conditions at 25 °C. Specifications subject to change without notice.

| |
|----------------|
| Catalog Number |
| Notes |
| Type |

Wafer LED Gimbal

WF4/WF6 ADJ

4" and 6" LED Gimbal Switchable White Color Temperature

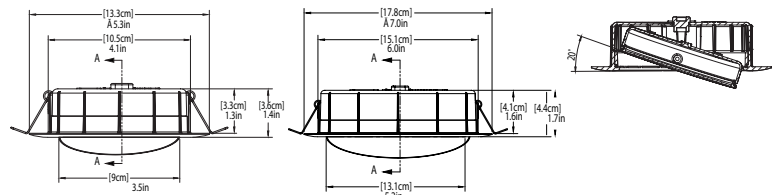
IC/Non-IC
New Construction/Remodel



Matte black

| WF4 Specifications | | WF6 Specifications | |
|--------------------|------------|--------------------|------------|
| Aperture: | 3.5 (9) | Aperture: | 5.2 (13.1) |
| Ceiling opening: | 4.1 (10.5) | Ceiling opening: | 6 (15.1) |
| Overlap trim: | 5.3 (13.3) | Overlap trim: | 7 (17.8) |
| Height: | 1.4 (3.6) | Height: | 1.7 (4.4) |

All dimensions are inches (centimeters) unless otherwise indicated.



ORDERING INFORMATION

Example: WF4 ADJ LED 30K40K50K 90CRI MB

| WF4 ADJ | LED | CCT/W/Lumens ¹ | | CRI | Finish |
|-----------------------------|-------------|---------------------------|--|--------------------|-----------------------------------|
| Series | Lamp | | | | |
| WF4 ADJ 4" LED Wafer Gimbal | LED LED | 30K40K50K | 3000K/10W/707L 4000K/10W/780L 5000K/10W/759L | 90CRI 90CRI | MB² Matte Black |

ORDERING INFORMATION

Example: WF6 ADJ LED 30K40K50K 90CRI MB

| WF6 ADJ | LED | CCT/W/Lumens ¹ | | CRI | Finish |
|--|-------------|---------------------------|--|--------------------|--|
| Series | Lamp | | | | |
| WF6 ADJ 6" Adjustable LED Wafer Gimbal | LED LED | 30K40K50K | 3000K/13W/967L 4000K/13W/1091L 5000K/13W/1123L | 90CRI 90CRI | MW Matte White MB² Matte Black |

Notes

- Total system delivered lumens.
- Available as non-stock with a 30-day leadtime.

WF4 and WF6 ADJ Switchable White 4" and 6" LED Wafer Gimbal

Accessories: Order as separate catalog number.

| | |
|--------------------|--|
| WF8643 PAN R6 | Universal New Construction Pan, Retail Pack of 6 |
| WF8643 PAN U | Universal new construction pan, Unit Pack |
| WFJB U | Remodel joist bar |
| WFEXC6 SW3PIN FT4 | 3-Pin 6ft Cable |
| WFEXC10 SW3PIN FT4 | 3-Pin 10ft Cable |
| WFEXC20 SW3PIN FT4 | 3-Pin 20ft Cable |
| WF4GR MW JZ | 4" Wafer Goof Ring 4.2" ID x 6.2" OD |
| WF6GR MW JZ | 6" Wafer Goof Ring 6" ID x 8" OD |

*Goof rings are made of 22 gauge steel and painted white.



WF8643 New Construction Pan



Remodel Joist Bar



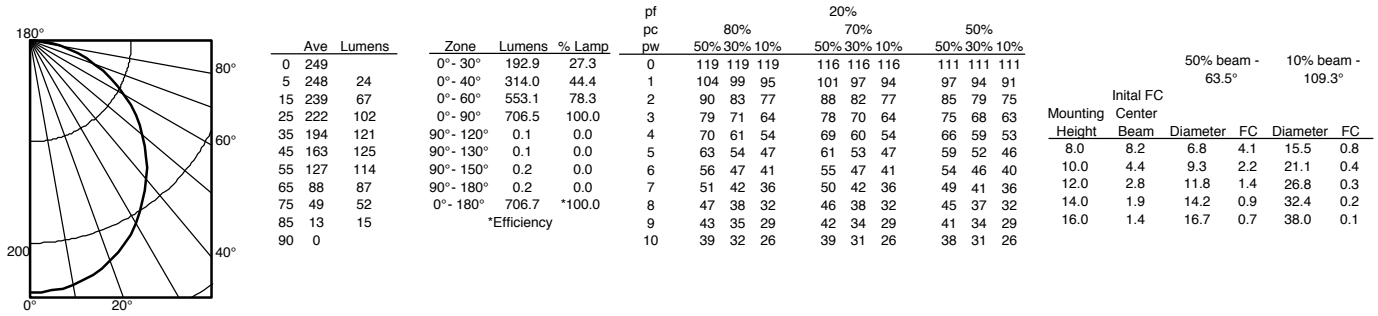
WFEXC_3pin Cable

WF4 and WF6 ADJ Switchable White 4" and 6" LED Wafer Gimbal

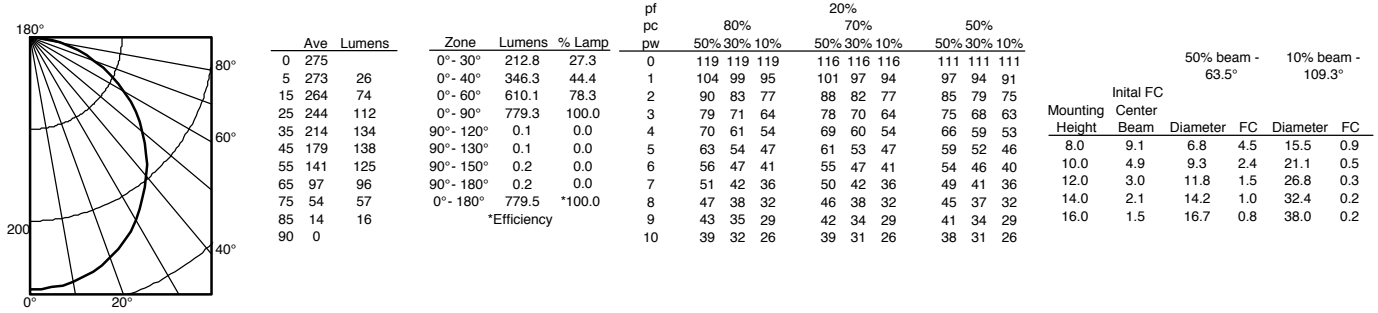
PHOTOMETRICS

Distribution Curve Distribution Data Output Data Coefficient of Utilization Illuminance Data at 30" Above Floor for a Single Luminaire

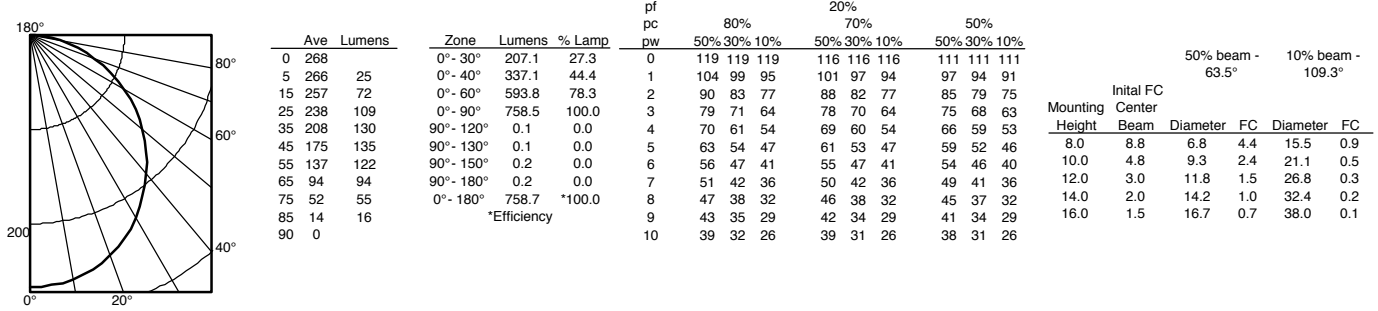
WF4 ADJ LED 30K40K50K, 3000 K LEDs, input watts: 10, delivered lumens: 706.8, LM/W=70.7, test no. ISF 19684P4



WF4 ADJ LED 30K40K50K, 4000 K LEDs, input watts: 10, delivered lumens: 779.5, LM/W=78, test no. ISF 19684P5



WF4 ADJ LED 30K40K50K, 5000 K LEDs, input watts: 10, delivered lumens: 758.7, LM/W=75.9, test no. ISF 19684P6



WF4 and WF6 ADJ Switchable White 4" and 6" LED Wafer Gimbal

ENERGY DATA

| WF4 ADJ LED 30K40K50K 90CRI | | | |
|-----------------------------|------------------------------------|------------------------------------|------------------------------------|
| Color Temperature | 3000K | 4000K | 5000K |
| Lumens | 680 | 750 | 730 |
| CRI | 90 | 90 | 90 |
| Rated wattage | 10 | 10 | 10 |
| Lu/Watts | 68.0 | 75.0 | 73.0 |
| Min. starting temp | -40°C (-40°F) | -40°C (-40°F) | -40°C (-40°F) |
| EMI/RFI | FCC Title 47 CFR, Part 15, Class B | FCC Title 47 CFR, Part 15, Class B | FCC Title 47 CFR, Part 15, Class B |
| Sound rating | Class A Standards | Class A Standards | Class A Standards |
| Input voltage | 120V | 120V | 120V |
| Min. power factor | 0.95 | 0.95 | 0.95 |
| Input frequency | 50/60 Hz | 50/60 Hz | 50/60 Hz |
| Input power | 10 | 10 | 10 |
| Input current | 0.08A | 0.08A | 0.08A |

| COMPATIBLE DIMMERS | | | |
|--------------------------|----------------------|-------------------------|------------------|
| Lutron | Leviton | Synergy / Leviton | Sensorswitch |
| DVELV-300P | 6633 | ISD 400 ELV 120 / IPE04 | nSP5 PCD ELV 120 |
| 300P SELV | 6674 | ISD 600 I 120 / IPI06 | |
| CTCL-153P-WH | IPL06 - LED/INC mode | | |
| NTELV-300P | DW6HD | | |
| DVCL-153P | | | |
| MACL-153M | | | |
| TGCL-153PH | | | |
| 6633-PA | | | |
| Maestro MACL-153M (TX) | | | |
| Caseta Wireless PD-6WCL* | | | |

* Require Lutron Smart Bridge L-BDG2-WH (sold separately) for wireless connection

LIGHTING PERFORMANCE DATA



LIGHTING PERFORMANCE DATA DONNÉES SUR LE RENDEMENT DE L'ÉCLAIRAGE

Light Appearance (CCT)
Aspect de la lumière (CCT)

3000K warm white | blanc chaud

680 lumens | 68 lumens per watt

4000K cool white | blanc froid

750 lumens | 75 lumens per watt

5000K daylight | lumière du jour

730 lumens | 73 lumens per watt

Watts **10**

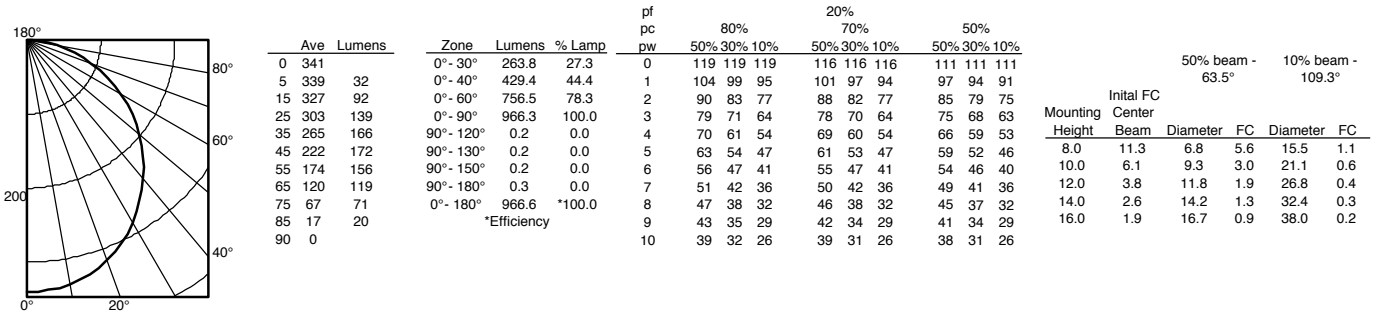
Color Accuracy (CRI) **90**
Précision des couleurs (CRI)

WF4 and WF6 ADJ Switchable White 4" and 6" LED Wafer Gimbal

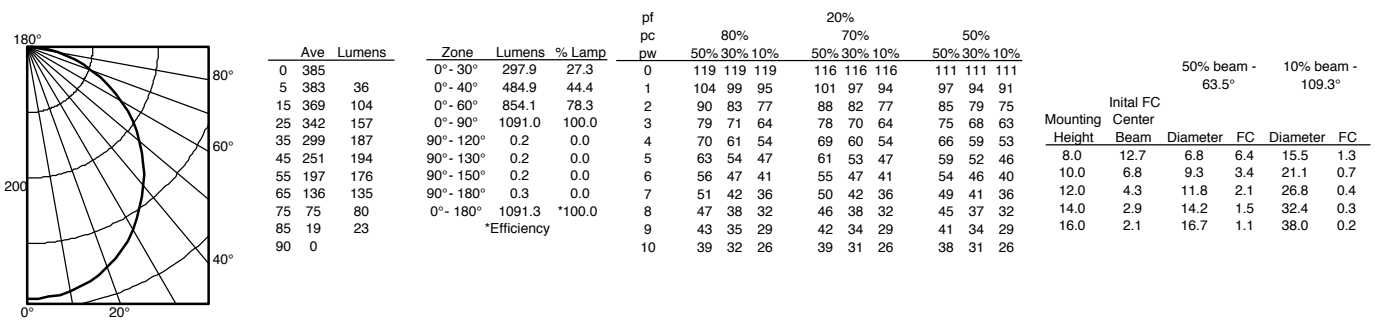
PHOTOMETRICS

Distribution Curve Distribution Data Output Data Coefficient of Utilization Illuminance Data at 30" Above Floor for a Single Luminaire

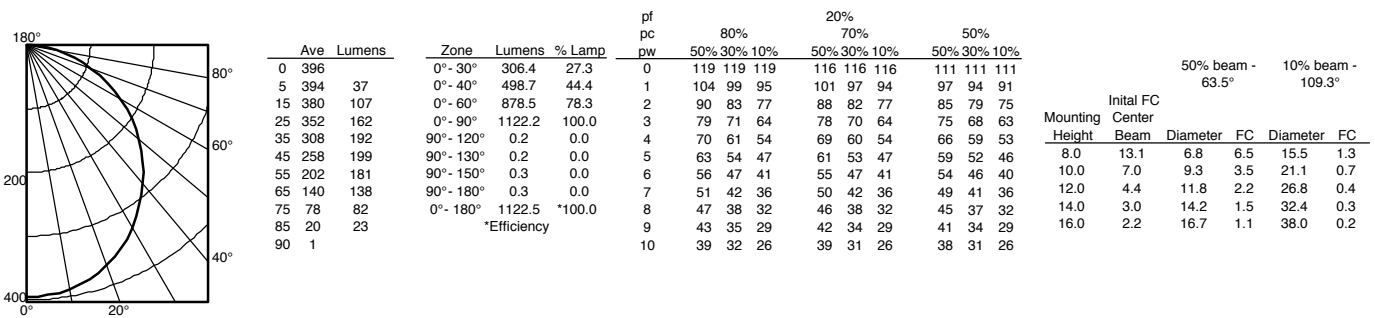
WF6 ADJ LED 30K40K50K, 3000K LEDs, input watts: 13, delivered lumens: 966.6, LM/W=74.4, test no. ISF 19684P10



WF6 ADJ LED 30K40K50K, 4000K LEDs, input watts: 13, delivered lumens: 1091.3, LM/W=83.9, test no. ISF 19684P11



WF6 ADJ LED 30K40K50K, 5000K LEDs, input watts: 13, delivered lumens: 1122.5, LM/W=86.3, test no. ISF 19684P12



WF4 and WF6 ADJ Switchable White 4" and 6" LED Wafer Gimbal

ENERGY DATA

| WF6 ADJ LED 30K40K50K 90CRI | | | |
|-----------------------------|------------------------------------|------------------------------------|------------------------------------|
| Color Temperature | 3000K | 4000K | 5000K |
| Lumens | 930 | 1050 | 1080 |
| CRI | 90 | 90 | 90 |
| Rated wattage | 13 | 13 | 13 |
| Lu/Watts | 71.5 | 80.8 | 83.1 |
| Min. starting temp | -40°C (-40°F) | -40°C (-40°F) | -40°C (-40°F) |
| EMI/RFI | FCC Title 47 CFR, Part 15, Class B | FCC Title 47 CFR, Part 15, Class B | FCC Title 47 CFR, Part 15, Class B |
| Sound rating | Class A Standards | Class A Standards | Class A Standards |
| Input voltage | 120V | 120V | 120V |
| Min. power factor | 0.95 | 0.95 | 0.95 |
| Input frequency | 50/60 Hz | 50/60 Hz | 50/60 Hz |
| Input power | 13 | 13 | 13 |
| Input current | 0.11A | 0.11A | 0.11A |

| COMPATIBLE DIMMERS | | | |
|--------------------------|----------------------|-------------------------|------------------|
| Lutron | Leviton | Synergy / Leviton | Sensorswitch |
| DVELV-300P | 6633 | ISD 400 ELV 120 / IPE04 | nSP5 PCD ELV 120 |
| 300P SELV | 6674 | ISD 600 I 120 / IPI06 | |
| CTCL-153P-WH | IPL06 - LED/INC mode | | |
| NTELV-300P | DW6HD | | |
| DVCL-153P | | | |
| MACL-153M | | | |
| TGCL-153PH | | | |
| 6633-PA | | | |
| Maestro MACL-153M (TX) | | | |
| Caseta Wireless PD-6WCL* | | | |

* Require Lutron Smart Bridge L-BDG2-WH (sold seperately) for wireless connection

LIGHTING PERFORMANCE DATA



| LIGHTING PERFORMANCE DATA DONNÉES SUR LE RENDEMENT DE L'ÉCLAIRAGE | |
|---|-----------|
| Light Appearance (CCT) Aspect de la lumière (CCT) | |
| 3000K warm white blanc chaud | |
| 930 lumens 71 lumens per watt | |
| 4000K cool white blanc froid | |
| 1050 lumens 80 lumens per watt | |
| 5000K daylight blanc neutre | |
| 1080 lumens 83 lumens per watt | |
| Watts | 13 |
| Color Accuracy (CRI) Précision des couleurs (CRI) | 90 |