

Project		Catalog #		Type	
Prepared by		Notes		Date	



Metalux

SPHB

LED Selectable Linear High Bay

Typical Applications

Industrial • Commercial • Retail • Manufacturing • Warehouse • Gymnasium ⁽¹⁾
 • Multi-purpose • Grocery • High Bay / Low Bay Applications

Note: (1) Rigid Stem mount not recommended for use in gymnasiums.

Interactive Menu

- Energy and Performance Data [page 2](#)
- Product Specifications [page 2](#)
- Photometric Data [page 3](#)
- Sensor Coverage [page 5](#)
- Product Warranty

Product Certification



Product Features

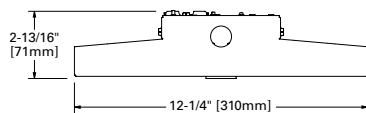


Top Product Features

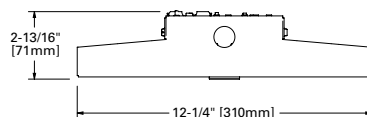
- Compact linear design for easy install
- 2 Sizes offering deliver lumens from 12,000 up to 36,000 lumens
- High Performance efficacy up to 157 lm/W
- Optimized medium distribution
- Sensor ready port for in-field installation
- IK10 rated for unfriendly environments

Dimensional and Mounting Details

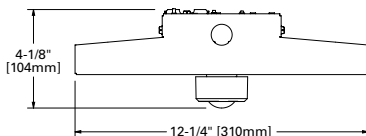
18 INCH - NO SENSOR



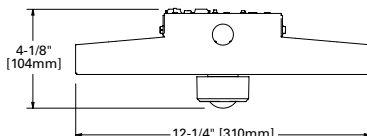
26 INCH - NO SENSOR



18 INCH - SENSOR



26 INCH - SENSOR



[additional product diagrams](#)

Energy and Performance Data

Catalog#	UPC	Voltage	Lumen Setting	CCT Setting	Lumens	Watts	Efficacy (lm/W)
SPHB-1224SE-M-UNV-L84050-CD-SP1-U	080083289264	120-277	Low	4000	12,853	82	157
				5000	12,851	82	157
			Med	4000	18,802	123	153
				5000	18,646	123	152
			High	4000	24,190	164	147
				5000	24,120	164	147
SPHB-2436SE-M-UNV-L84050-CD-SP1-U	080083289288	120-277	Low	4000	24,912	162	154
				5000	24,799	162	153
			Med	4000	31,161	209	149
				5000	30,731	208	148
			High	4000	36,237	251	144
				5000	35,747	249	144

Lumen Maintenance

Ambient Temperature	TM-21 Lumen Maintenance (60,000 hours)	Theoretical L70 (hours)
25°C	> 88%	> 173,000

Shipping Data

Catalog No.	Gross Weight
SPHB-1224SE-M-UNV-L84050-CD-SP1-U	8 lbs.
SPHB-2436SE-M-UNV-L84050-CD-SP1-U	10 lbs.

Ambient Ratings

Lumen Package	Suspended ≥12" from ceiling	Surface Mounted using SPHB-SMK
SPHB-1224SE-M-UNV-L84050-CD-SP1-U	45C	40C
SPHB-2436SE-M-UNV-L84050-CD-SP1-U	45C	40C

Product Specifications

Construction

- Durable CRS housing provides added protection for LED components and optimal performance
- Compact, low-profile design for easy installation
- High impact, polycarbonate lens protects LEDs and provides optimal distribution
- IK10 rated

Electrical

- Long-life LED system with electronic driver for optimal performance
- Selectable power switch for 3 levels of lumen output per model
- Selectable color switch provides 4000 or 5000K CCT at CRI ≥80
- 120 - 277V operation
- 0-10V dimming, 10% with dim-to-off standard
- Operating temperature of -40°C to 45°C
- Designed to withstand surge protection up to 6kV/3kA per ANSI C82.77-5-2015

Optics

- Medium distribution standard

Mounting

- V-hangers and chain set for suspension mount included
- Optional single-point and surface mount kits are available

Compliance

- cULus listed for damp locations
- IESNA LM-79 and LM-80 standards compliant
- Qualifies as State of California Title 24 non-residential high efficiency luminaire
- FCC part 15 class A compliant
- DesignLights Consortium® Qualified and classified for DLC Premium, refer to www.designlights.org for details.

Sensor

- Plug and play low-voltage sensor accessory available
- Sensor installs directly to integral fixture port
- PIR motion sensor with 0-10V control
- Up to 40ft mounting height
- Sensor remote control must be ordered separately

Finish

- White powder coat finish painted after fabrication

Warranty

- Five year limited warranty

Installed Options (include in catalog logic when ordering)

Ex. SPHB-2436SE-M-UNV-L84050-CD- C6(1) -SP1- WLS4 -U

SPHB-1224SE-M-UNV-L84050- EL14WHV -CD-SP1-U

Catalog Number	Description
C6 (1)	1 Circuit, 6' Cord with no Plug
C12 (1)	1 Circuit, 12' Cord with no Plug
PC6/277	6' cord, 18/3, white, with 277V, 15A NEMA twist-lock plug
PC12/277	12' cord, 18/3 with 277V, 15A NEMA twist-lock plug
WLS4	Wavelinx Lite Wireless Sensor, Sidecar ⁽¹⁾
WPS4	Wavelinx Pro Wireless Sensor, Sidecar ⁽¹⁾
EL14WHV	14-watt 120V-277V, Class 1 emergency battery pack installed ⁽¹⁾
EL20WHV	20-watt 120V-277V, Class 1 emergency battery pack installed ⁽¹⁾

Notes: (1) SPHB1224SE not available with combination of Wavelinx Sensors and EM Batteries.

Accessories List (sold separately)

Catalog Number	Description
SPHB-SMK ⁽²⁾	Surface mount kit. Qty. 1 required for SPHB-1224SE-M-UNV-L84050-CD-SP1-U. Qty. 2 required for SPHB-2436SE-M-UNV-L84050-CD-SP1-U.
SPHB-WG18	Wire Guard for SPHB-1224
SPHB-WG26	Wire Gurard for SPHB-2436
UHBS-SENSOR PK	PIR Sensor Kit w/ 360 Lens
UHBS SENSOR REMOTE	UHBS Sensor Remote Control
SPHB-SPM ⁽²⁾	Single point mounting kit
Y-TOGGLE-_-2PK	(2) Y-Toggle Cable Kits (Specify 10 or 30 for length in feet)

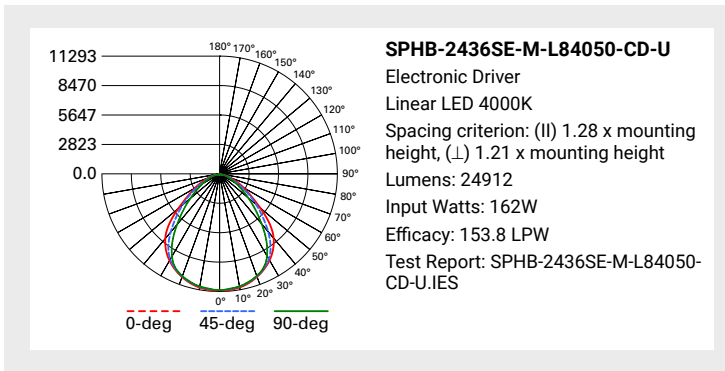


SENSOR
Plug in sensor

Notes: (2) Cannot be used on fixtures with Emergency Battery installed.

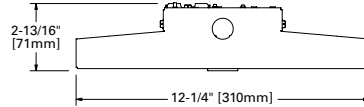
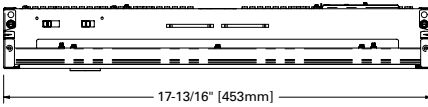
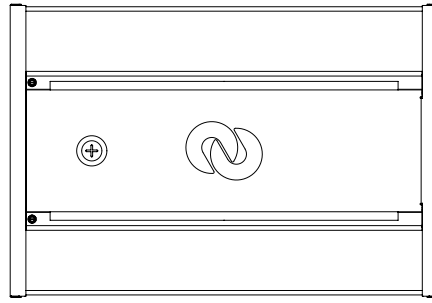
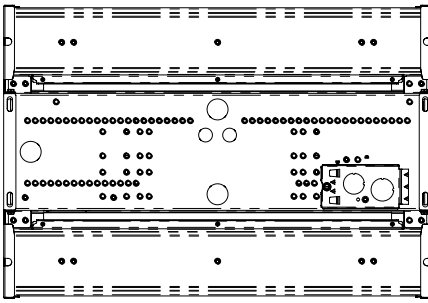
Photometric Data

[View IES files](#)

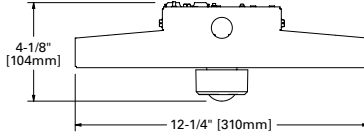
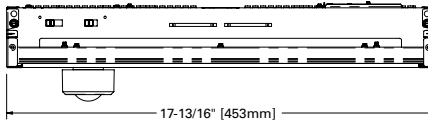


Dimensional and Mounting Details

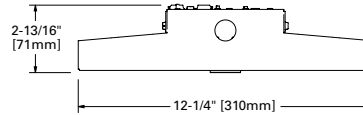
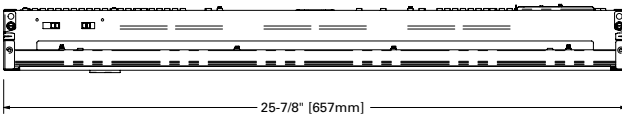
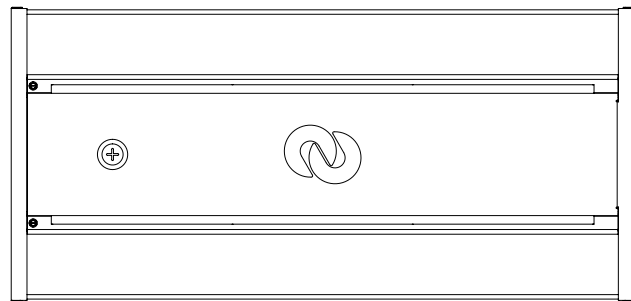
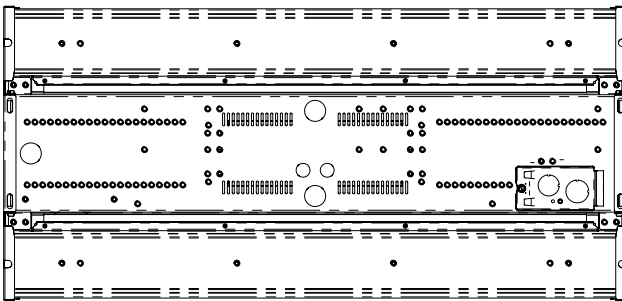
18 INCH - NO SENSOR



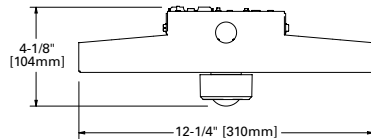
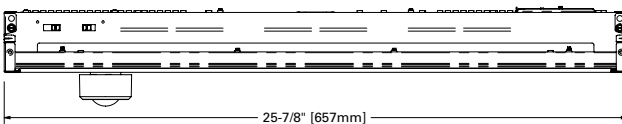
18 INCH - SENSOR



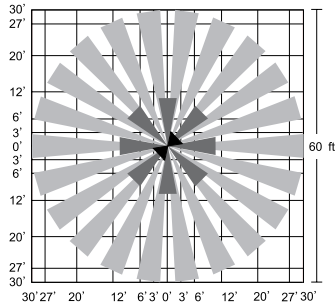
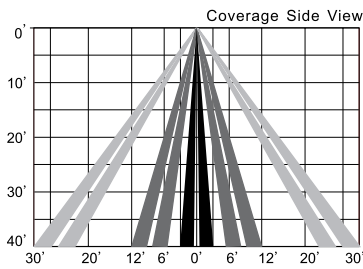
26 INCH - NO SENSOR



26 INCH - SENSOR



Sensor Coverage



Sensor Specifications

Power supply	12V-24V DC, >30mA
Dim control output	0-10V, max. 25mA sinking current
Remote range	50ft. (15m) indoor, no backlight
Dim control output	0-10V
Detection radius	20% / 50% / 75% / 100% (1-8m)
Mounting height	Up to 40ft (12 m)
Time setting	10s / 1 min / 5 min / 10 min / 15 min / 20 min / 30 min / 60 min
Light-control	24H / 10 LUX / 30 LUX / 50 LUX
Sensor Operating Temp.	-20°C to 60°C
IP rating	IP65

Notes: Warm up time 40 sec after sensor first receives input power. Fixture will stay on 40 seconds then work move to default mode.

Any setting changed by sensor remote control (order remote separately), will led lights on remote to turn on and off to confirm. See sensor instruction sheet on SPHB product page found on www.cooperlighting.com

Sensor Modes

	Brightness	Sensitivity	Hold Time	Daylight Sensor	Stand-by Dim	Stand-by Period
MODE 1 (Default)	100%	75%	5 min	Disabled	30%	30 min
MODE 2	100%	75%	1 min	Disabled	30%	∞
MODE 3	100%	75%	5 min	30LUX	30%	30 min
MODE 4	100%	75%	1 min	(30LUX/300LUX)	30%	∞