

CROUSE-HINDS
SERIES

B-LINE
SERIES

Data Center Solutions

Delivering maximum performance,
efficiency and scalability.



Powering Business Worldwide

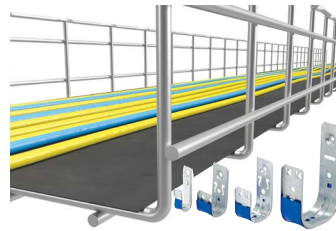
Delivering maximum performance, efficiency and scalability.

Your data center is the backbone of your business. And whatever its size or capacity, your operation requires solutions that drive efficiency and scale easily. Eaton's distributed IT infrastructure and connectivity equipment capabilities combine product strengths and expert personnel to allow the ability to offer comprehensive and innovative solutions for critical power and digital infrastructure applications.



Seismic bracing solutions

TOLCO™ seismic bracing products lead the industry with patented, innovative solutions. Many products feature innovative features that help save on installation time.



Cable management

Multiple B-Line series tray options to manage, organize and identify cable and wire in new and retrofit data center applications.



Support systems and enclosures

Crouse-Hinds and B-Line series support solutions support cable and conduit pathways, create ceiling grids and more.



Outlet boxes and fasteners

Expansive line of Crouse-Hinds series outlet boxes and B-Line series mounting fasteners for the rough-in stage of construction.



Conduit fittings and hub solutions

Crouse-Hinds series conduit bodies, fittings and hubs to create conduit runs and to connect conduit to boxes or enclosures.



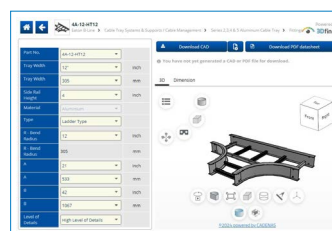
Connector and accessories

Crouse-Hinds series IEC 60309 plugs and connectors are ideal for providing reliable, efficient and safe power to data center equipment.



Rack and runway

B-Line series rack and runway available for network closets, enterprise and colocation data centers.



Services, resources and tools

We design products, services and tools to help you reduce complexity before, during and after the install. We focus on innovation solutions that increase efficiency and maximize the return on your investment.

Seismic bracing solutions

TOLCO™ seismic bracing products lead the industry with patented, innovative solutions. Many products feature innovative features that help save on installation time. One example is the break-off bolt heads which provide visual verification of proper torque and installation to the structure and attachment to the seismic brace component.

- Rigid and cable bracing for MEP and Fire Protection applications
- Vibration isolation solutions
- Seismic Engineering Services
- Meet or exceed codes and certifications
- 3D drawings and Revit BIM models available
- TOLBrace™ software for TOLCO Fire Protection solutions

To learn more about how you can save time on installations and reduce complexity on the job site, visit Eaton.com/chbl-datacenters.



Seismic cable kit

The B-Line series seismic bracing cable kit system is up to 50% faster to install over traditional cable bracing methods. Tested by an independent lab, the seismic cable kits are designed to brace non-structural equipment and distribution systems to help minimize damage in a seismic event.

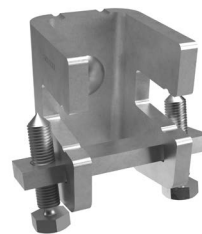


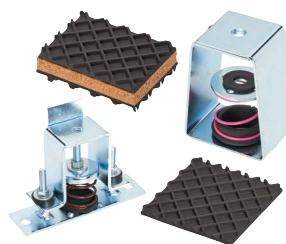
Fig. 828 universal sway brace attachment

Designed to attach sway bracing and hanger assemblies to structural members using a secure non-friction connection without drilling or welding. Secures brace to structure either across or along the beam. Break-off head set screw helps ensure verification of proper installation torque.



CPVC hangers and restraints

B-Line series hangers for chlorinated polyvinyl chloride (CPVC) pipe suspend and help restrain mechanical or fire sprinkler system applications.



Vibration isolation

Eaton's family of vibration isolation solutions help reduce vibration to avoid problems, such as disruption or damage to equipment, production losses, energy efficiencies and more.



Rod stiffeners

Secure strut channel to vertical hangers with rod stiffeners to help prevent buckling during a seismic event. Eaton TOLCO rod stiffeners feature a break-off bolt head, which helps reduce inspection time by allowing a visual verification of the proper torque and installation.



Seismic anchors

Seismic anchors include concrete screw bolts, wedge screws, concrete inserts and more.



Cable management

Eaton offers a wide variety of B-Line series tray types, load ratings, material and finish options to manage, organize and identify cable and wires in data centers and facilities.

Featured time saving solutions

- Cable / J-Hooks
- KwikWire™ hanging system
- KwikRail™ cable tray
- Quick Connect™ wireway

To learn more about how you can save time on installations and reduce complexity on the job site, visit Eaton.com/chbl-datacenters.com.



Flextray wire basket

This flexible, field-adaptable cable management solution combines strength, lightweight construction, depth and unmatched adaptability to support cables in a fast and economical way. Flextray can be cut and bent on the job site, allowing cable runs to be adjusted as needed.



KwikRail cable tray

Rated for NEMA 12A and 12B load classes, the system features a splice retention groove I-beam side rail to easily guide and snap the splice plate into position and secures with just two bolts.



Cable bus solution

Provides a comprehensive and customizable solution for high-capacity power delivery in industrial and commercial applications. The modular enclosure system can be easily modified before the cable is installed, simplifying installation and helping reduce costs, making it an ideal choice for complex layouts.



KwikSplice cable channel

With an innovative dove tail splice design, Eaton's B-Line series KwikSplice™ cable channel is designed to reduce complexity, improve versatility and speed installs. The system is ideal for light duty cable support runs replacing conduit in a variety of industrial and commercial applications.



J-hook cable managers

Available in a variety of single and multi-tiered J-hook options as well as color ID clips to segment and organize light cables in network and server room applications.



KwikWire hanging system

Flexible replacement for jack chain and all thread rod that will help reduce by up to 50% faster. Quickly wrap KwikWire hanging system around beams with no drilling required; simple height adjustments are made by releasing the clamp's adjustment pin with no tools required.



Wireway systems solutions

Wireways are troughs with hinged or removable covers for housing and protecting electric wires and cable. Conductors are laid into the wireway after the wireway has been installed as a complete system.



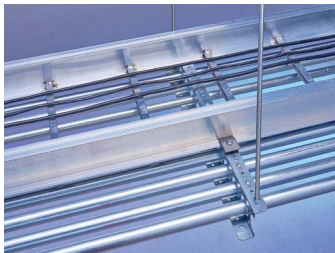
Support systems and enclosures

Eaton offers a full line of Crouse-Hinds and B-Line series support solutions to connect and support tray, enclosures and more in data centers and facilities.

Featured time saving solutions

- Pre-assembled strut fittings
- Buzznut strut solution
- Combonut strut solution
- Twirl Nut strut solution
- Universal pipe clamp

To learn more about how you can save time on installations and reduce complexity on the job site, visit Eaton.com/chbl-datacenters.com.



Conduit trapeze support

Up to 50% faster to install and up to 75% material savings over traditional trapeze solutions.



Strut systems

B-Line series strut system is available in solid, slotted hole and long slotted hole types in a variety of materials and finishes to meet your support and trapeze needs. The line includes a large array of time-saving fittings and hardware.



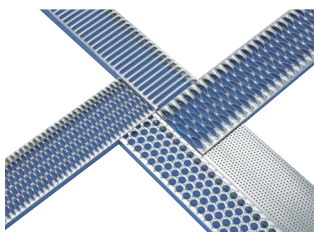
Pipe hangers

Data centers require extensive HVAC/plumbing for environment control. Clevis hangers, beam clamps, and pipe slides are common materials featured in a BOM.



Strut nuts and hardware

Eaton offers a number of strut nuts and hardware, such as the Buzznut™, ComboNut™ and Twirl Nut™ that can save installers significant time on the job.



Safety gratings

B-Line series Traction Tread™ and Perfo-Grip™ safety grating systems provide a slip-resistant surface for mezzanines, walkways, catwalks and more.



NEMA environmental enclosures

It's not only important to have reliable power, but safeguarding your power distribution with quality environmental enclosures is critical to keep your data center up and running effectively.



Outlet boxes, fasteners and connectors

Eaton offers a complete line of Crouse-Hinds series outlet boxes and connectors and B-Line series fasteners that speed installation and reduce complexity on the job site.

Featured time saving solutions

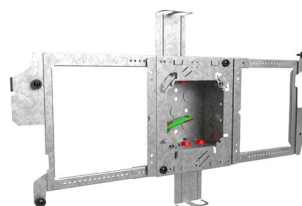
- Quick-Lok™ outlet boxes
- Ruff-IN™ prefabricated assemblies
- Prefabricated strut trapeze kits
- Quick-Lok™ Pro connectors

To learn more about how you can save time on installations and reduce complexity on the job site, visit Eaton.com/chbl-datacenters.com.



IEC60309 connectors

Used for continuity of electrical supply without interruption and is available in different configurations and certifications.



Quick-Lok outlet box and telescoping open bracket

The Quick-Lok box and telescoping bracket can save time, reduce complexity and optimize your profit on your next rough in project.



AC/MC Fittings

AC/MC connectors and couplings are used to connect armored cable, metal-clad cable or flexible metallic conduit to a box or enclosure. Our Quick-Lok Pro connectors require no tools for installation, improving job site productivity.



Fasteners

B-Line series fasteners include cable and conduit fasteners, hanging systems, box support brackets and more.

Aluminum CGB gland connectors

Light-weight & durable design that's ideal for terminating large cables and cords in data centers. Tested and certified for non-armored cable and tray cable (TC & TC-ER). Available up to 3" NPT.



Outlet boxes

From standard 4" to 4^{11/16}" square outlet boxes to octagonal and weatherproof solutions, Eaton offers one of the widest selection of outlet boxes to meet your needs.



Ruff-IN prefabricated solutions



Demands of electrical contractors are at an all-time high. Incredibly tight budgets paired with scope creep, digital deliverables, and green building initiatives like waste reduction create unique opportunities and challenges for nearly every project.

- Ruff-IN is our extensive portfolio of innovative, pre-fabricated in-wall and overhead electrical assemblies.
- Our Ruff-IN pre-fab solutions save on time and help reduce costs for a healthier bottom line.
- Ruff-IN supports your needs for standardization, installation speed and optimization of your work force.



Conduit bodies, fittings and hubs

Time tested and field-proven conduit fittings provide pathways for moving power simply and safely in your data center's electrical installation. Our fittings deliver dependable performance, labor savings and lower installed cost, all from a single source.

Featured time saving solutions

- Myers™ Hubs
- Condulet™ conduit bodies, boxes and covers
- Liquidtight fittings

To learn more about how you can save time on installations and reduce complexity on the job site, visit Eaton.com/chbl-datacenters.com.



Conduit outlet bodies

Our Series 5 die cast copper-free aluminum conduit bodies, covers and gaskets are available for use with rigid or EMT conduit (with set screw). Act as pull outlets, make 90° bends, provide for splices, taps, mounting outlets, etc.



EMT Fittings

Crouse-Hinds series EMT connectors and couplings are used to join EMT conduit to a box or enclosure, or to couple two ends of EMT conduit. Available in set screw type and compression type, in both insulated and non-insulated versions.



Hubs

Our offering includes the industry-leading Myers Hubs, as well as malleable iron hubs and zinc commercial hubs.



Liquidtight fittings

Used to terminate and seal liquidtight flexible metal conduit to an oiltight, raintight or liquidtight box or enclosure. Combines a rugged design with labor savings features for a reliable product that reduces installation time and cost.



Grounding bushings

Used on threaded rigid/IMC conduit to provide a means of grounding conduit through an insulated bushing.



Conduit expansion joints

Expansion / deflection joints are used in conduit runs to permit linear movement caused by thermal expansion and contraction.



Conduit products - straps, clamps and plugs

Used to support or secure EMT, rigid, or IMC conduit to mounting surface.



Rack and runway

Eaton offers a wide variety of B-Line series open frame racks, runway and cable managers for horizontal and vertical cable runs between racks and enclosures.

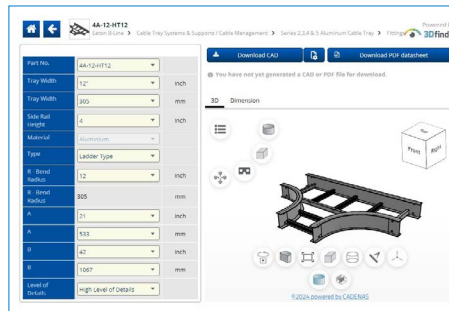
- Two-post and four-post racks
- Seismic zone 4 racks
- Vertical and horizontal rack cable managers
- Runway system

Custom solutions

Eaton is able to customize solutions to meet the unique needs of your data center. Contact your local sales representative or Engineering services to learn more.

Services, resources and tools to minimize complexity, increase efficiency and maximize your profit.

At Eaton, we listen to our customers' challenges and provide solutions to meet their needs. We provide services, resources and tools to help you reduce complexity before, during and after the install. We focus on innovation solutions that increase efficiency and maximize the return on your investment.



Engineering Services

- Specification, design, and application support
- Drawings/model review and support
- Engineering calculations, ROI calculators and testing
- Environmental impact analysis
- Optimize project savings for standard or custom solutions
- Submittal packages drawings with PE stamped options
- Bill of material for products, supports and accessories
- Electrical and mechanical take-offs

Design and drawing library

- Master specifications
- 2D & 3D drawings
- Revit & BIM models
- SP3D files
- NEMA cable tray submittal builder
- Product design and specification guides

Technical and Educational Resources

- SKU data sheets
- Instruction manuals
- TOLBrace fire protection solution
- AutoDesk MEP for pipe hangers
- White papers and success stories
- Time and cost-saving solutions calculators
- Training videos



Learn more about Data centers product and services at Eaton.com/chbl-datacenters