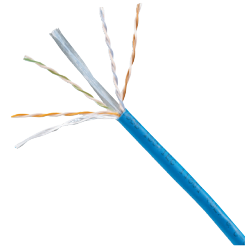


TX6000™ Unshielded Category 6 U/UTP Copper Cable

SPECIFICATIONS

Category 6 cable shall exceed the ANSI/TIA-568.2-D and IEC 61156-5 Category 6 component standards. The conductors shall be 23 AWG construction with FEP or polyolefin insulation. The copper conductors shall be twisted in pairs, separated by a cross-divider and covered by a low smoke, flame-retardant (CMP) jacket.



TX6000 Unshielded Category 6 U/UTP Copper Cable

CMP: PUP6004*-WZ

*Colors: BU (Blue), WH (White), YL (Yellow), IG (International Gray), BL (Black), RD (Red), GR (Green), OR (Orange), or VL (Violet)

TECHNICAL INFORMATION

Electrical performance:	Certified channel performance in a 4-connector configuration up to 100 meters and exceeds ANSI/TIA-568.2-D Category 6 and ISO 11801 Class E standards at swept frequencies up to 250 MHz Certified component performance up to 100 meters and exceeds the component requirements of ANSI/TIA-568.2-D and IEC 61156-5 Category 6 component standards at swept frequencies up to 250 MHz
Conductors/insulators:	23 AWG bare copper wire covered by FEP or polyolefin insulation
Insulation diameter:	0.034 in. – 0.044 in. (0.8mm – 1.1mm)
Flame rating:	NFPA 262 and CSA FT-6
PoE compliance:	Meets IEEE 802.3af, IEEE 802.3at and IEEE 802.3bt for PoE applications
Installation tension:	25 lbf (110 N) maximum
Temperature rating:	32°F to 122°F (0°C to 50°C) during installation -4°F to 167°F (-20°C to 75°C) during operation
Cable jacket:	Low smoke, flame-retardant PVC
Cable diameter:	0.225 in. (5.7mm) nominal
Cable weight:	26 lbs./1000 ft. (12 kg/305m)
Packaging:	1000 ft. (305m) in easy payout carton Package tested to ISTA Procedure 1A

KEY FEATURES AND BENEFITS

Third-party tested:	Cable has been tested as part of the TX6000 Copper Cabling System by an independent laboratory and complies with the electrical channel requirements of the following standard: ANSI/TIA-568.2-D Category 6
Integrated pair divider:	Separates pairs for exceptional cable performance
Easy payout carton:	Ensures proper performance and provides quick installation
Tested beyond the standards:	Cable has been characterized to 550 MHz, 300 MHz above the standard
Descending length cable markings:	Easy identification of remaining cable reduces installation time and cable scrap

APPLICATIONS

TX6000 U/UTP Copper Cable is a component of the TX6000 Category 6 U/UTP Copper Cabling System. Interoperable and backward compatible, this end-to-end system provides design flexibility to protect network investments well into the future. With certified performance to the ANSI/TIA-568.2-D Category 6 and ISO 11801 Class E standards, this system will support the following applications:

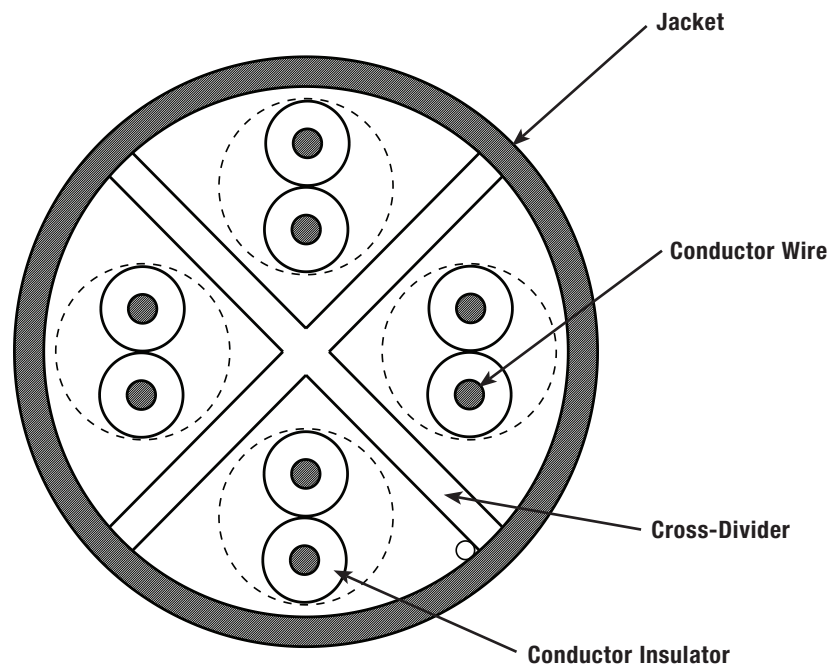
- Ethernet 10BASE-T, 100BASE-T (Fast Ethernet), 1000BASE-T (Gigabit Ethernet)
- 155 Mb/s ATM, 622 Mb/s ATM, 1.2 Gb/s ATM
- Token Ring 4/16

TX6000™ Unshielded Category 6 U/UTP Copper Cable

ADDITIONAL SPECIFICATIONS

Mechanical Test	
Ultimate breaking strength:	> 90 lbf (400 N)
Minimum bend radius:	4 x cable diameter
Electrical Test	
Nominal Velocity of Propagation (NVP):	68% nominal
Operating velocity, maximum:	80 V

ENGINEERING DRAWING



WORLDWIDE SUBSIDIARIES AND SALES OFFICES

PANDUIT US/CANADA
Phone: 800.777.3300

PANDUIT EUROPE LTD.
London, UK
Phone: 44.20.8601.7200

PANDUIT SINGAPORE PTE. LTD.
Republic of Singapore
Phone: 65.6305.7575

PANDUIT JAPAN
Tokyo, Japan
Phone: 81.3.6863.6000

PANDUIT LATIN AMERICA
Guadalajara, Mexico
Phone: 52.33.3777.6000

PANDUIT AUSTRALIA PTY. LTD.
Victoria, Australia
Phone: 61.3.9794.9020

For a copy of Panduit product warranties, log on to www.panduit.com/warranty

PANDUIT®

For more information
Visit us at www.panduit.com
Contact Customer Service by email: cs@panduit.com
or by phone: 800.777.3300

© 2024 Panduit Corp.
ALL RIGHTS RESERVED.
COSP614-WW-ENG
9/2024