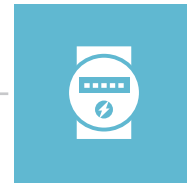
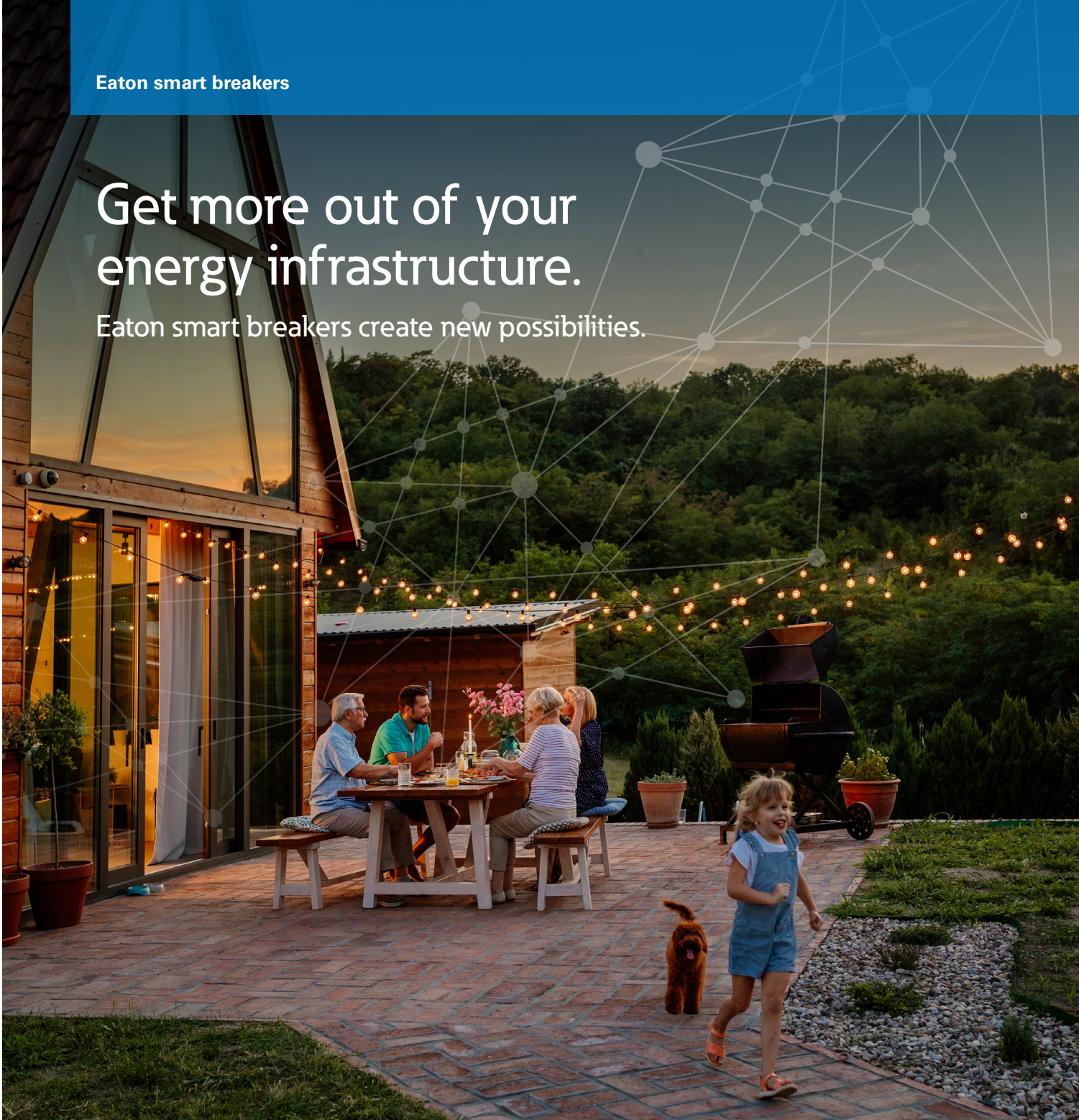


Eaton smart breakers

Get more out of your energy infrastructure.

Eaton smart breakers create new possibilities.



EATON

Powering Business Worldwide

Make smart energy decisions with Eaton's smart breakers.

Energy systems everywhere are changing fast as the uses of power become more electric. We reimagined what a circuit breaker can do to support a new power paradigm that's more sustainable, resilient and intelligent. And we're enabling targeted upgrades and updates to prepare energy systems for changes ahead. Here's how:



Smart

Use power more wisely with real-time energy monitoring and control.

Optimize energy use

Monitor and control connected appliances.

Flexibility in future planning

Leverage data-driven insights to scale energy systems to keep power flowing where you need it.



Simple

Make interoperability easy.

Fast install and integration

Breakers fit into most Eaton loadcenters and integrate with preferred software through Open APIs.

Simplify demand response

Control loads discretely behind the meter for more efficient, less intrusive demand response



Sustainable

Lower install costs for solar and storage.

Reduce component count

With revenue-grade metering that's +/-0.2% accurate built into our smart breakers.

Prioritize energy use

Get actionable insights into household energy use to keep the power on.



Type BR (1-inch BREM)

AMPERES	No. OF POLES	kAIC	CATALOG No.
15	1	10	BREM1015
20	1	10	BREM1020
30	1	10	BREM1030
15	2	10	BREM2015
20	2	10	BREM2020
30	2	10	BREM2030
40	2	10	BREM2040
50	2	10	BREM2050



Type BAB (1-inch BABEM)

AMPERES	No. OF POLES	kAIC	CATALOG No.
15	1	10	BABEM1015
20	1	10	BABEM1020
30	1	10	BABEM1030
15	2	10	BABEM2015
20	2	10	BABEM2020
30	2	10	BABEM2030
40	2	10	BABEM2040
50	2	10	BABEM2050

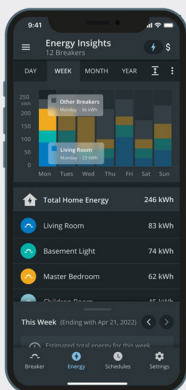
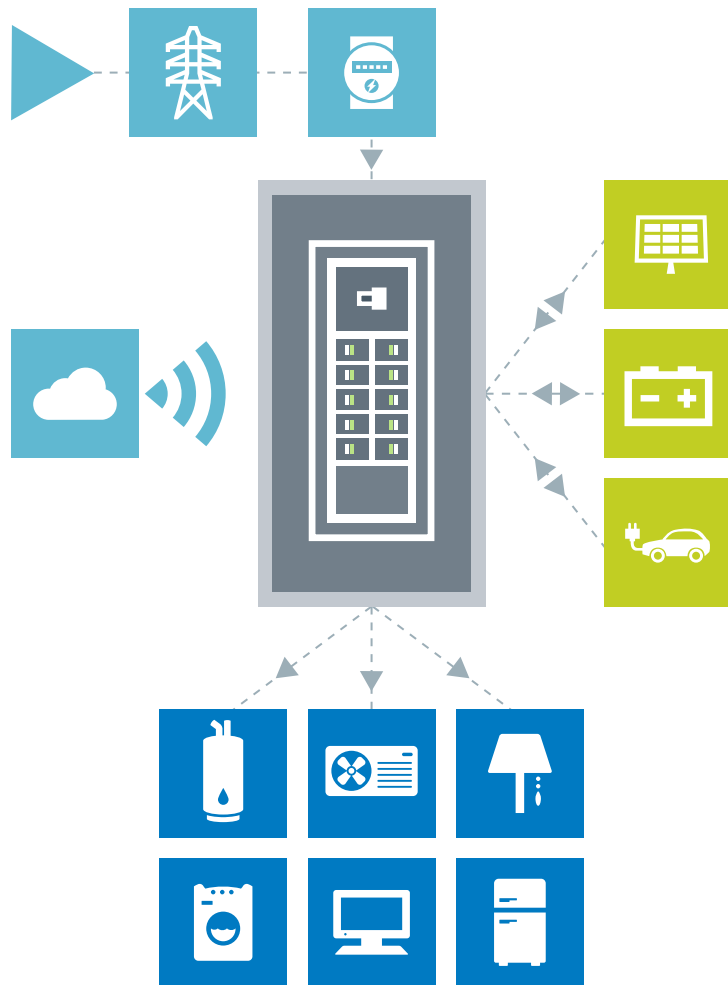
Optimize energy use today and into the future.

Eaton smart breakers deliver smart, simple and sustainable power—with the safety functionality of traditional circuit breakers and so much more. Through cloud connectivity, you can monitor and control loads inside the home, including electric vehicle chargers, energy storage systems and other distributed energy resources.



Enable targeted upgrades for changing energy needs.

Eaton smart breakers can be easily installed in most Eaton loadcenters. For detailed information including a list of compatible loadcenters, technical specifications and API documentation, visit Eaton.com/SmartBreakers.



There's an app for that.



Managing home energy habits can have a big payoff. Our Smart Energy Manager app delivers data-driven insights and control to the palm of your hand, so you can optimize energy use, reduce your electric bill and advance sustainability.

Energy insights

Better understand energy usage inside the home with app insights.

Cost savings

Create schedules during off-peak hours.

Stay up to date

Receive notifications if a smart breaker has tripped.

Flexible load control

Easily connect multiple breakers and assign loads to manage usage across energy-intensive appliances.

We make what matters work.*

* At Eaton, we believe that power is a fundamental part of just about everything people do. Technology, transportation, energy and infrastructure—these are things the world relies on every day. That's why Eaton is dedicated to helping our customers find new ways to manage electrical, hydraulic and mechanical power more efficiently, safely and sustainably. To improve people's lives, the communities where we live and work, and the planet our future generations depend upon. Because that's what really matters. And we're here to make sure it works.

See more at [Eaton.com/whatmatters](https://www.eaton.com/whatmatters)



Eaton
1000 Eaton Boulevard
Cleveland, OH 44122
United States
[Eaton.com](https://www.eaton.com)

© 2022 Eaton
All Rights Reserved
Printed in USA
Publication No. BR003026EN
June 2022

Eaton is a registered trademark.

All other trademarks are property of their respective owners.

Follow us on social media to get the latest product and support information.

