



Food Processing Product Solution Guide for Wiring Devices

HUBBELL® Food Processing Solutions



Washdown Areas



To ensure sanitary conditions, washdowns are required in food processing

environments. Strict cleanliness and sanitation requirements must be met to ensure product is safe for consumer use, but washdowns and harsh chemicals can damage and shorten the life of electrical products. Selecting the proper equipment is critical in avoiding downtime while still promoting sanitary conditions. All electrical equipment, controls, and components must be environmentally rated for the correct application.



Corrosive Environments

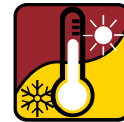


In highly corrosive food processing environments, materials must

constantly battle deterioration. Unprotected electrical products can deteriorate and fail, creating safety issues, unreliable connections, and the potential for lost productivity. Corrosion caused by chemicals, moisture, and other elements can't be eliminated, but the right products can ensure that corrosion doesn't interfere with reliable power delivery.



Extreme Temperatures



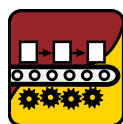
Food and beverage plants often operate within extreme temperature ranges

due to processing equipment like dryers, ovens, and flash freezers. Harsh hot and cold zones, along with extreme temperature fluctuations, can add stress to the electrical system. In these environments, electrical component failure may occur. Expansion and contraction caused by temperature changes can damage electrical devices.





Process Automation



Improving food processing capabilities and efficiencies can help lower production costs while improving overall productivity. To achieve this, all electrical, instrumentation and automation components must work together efficiently and effectively within the process automation. Automating food and beverage processing requires equipment flexibility and the ability to reconfigure quickly and efficiently.



Personnel Protection



Not only is food safety important in a food processing environment – so is the safety of the personnel who work in these areas. Employees are subject to the risk of electrical shock from exposed wiring and trips and falls from cables and cords on the floor. Injury due to working alongside harsh chemicals and in extreme temperatures are also a concern. Commitment to personnel safety requires the right types of electrical components to protect against hazards.



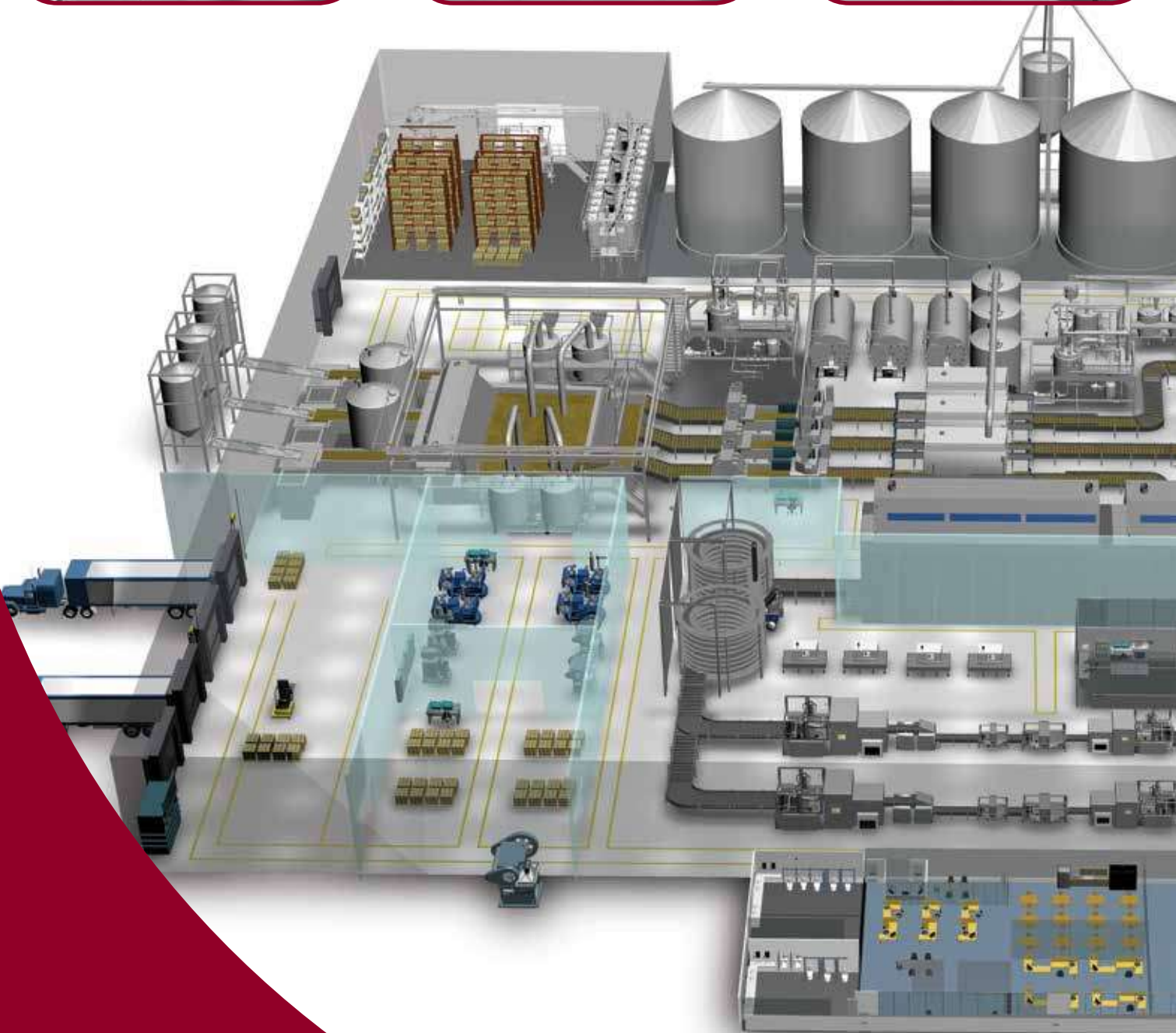
Harsh Locations



Food processing plants can be classified as hazardous by the National Electrical Code because of the way materials are handled, processed, and stored. Explosion and fire are possible due to the presence of flammable gases, vapors, and dust. To protect food processing facilities and employees, high-performance solutions are needed to prevent and contain possible explosion.



HUBBELL® Food Processing Solutions



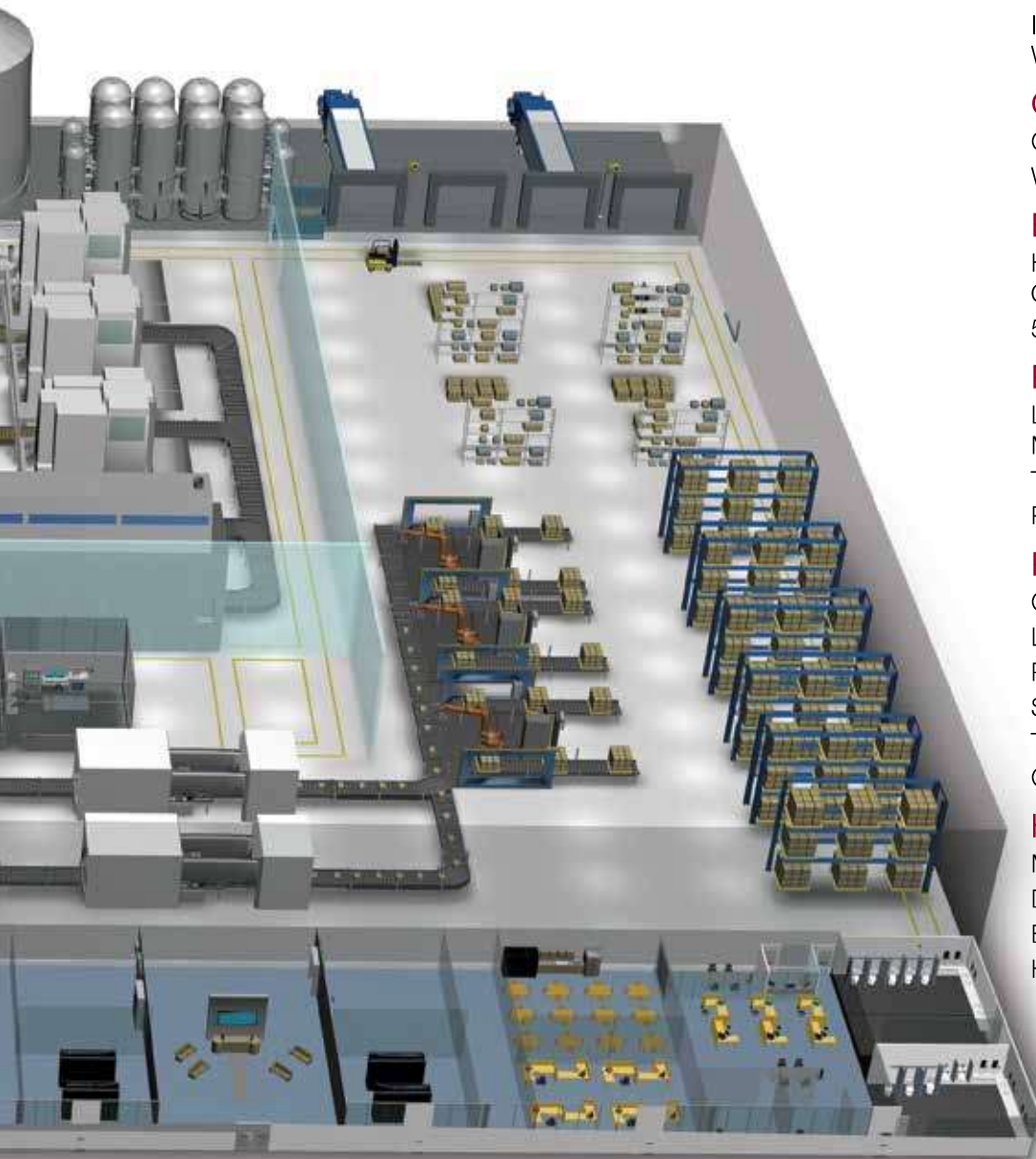
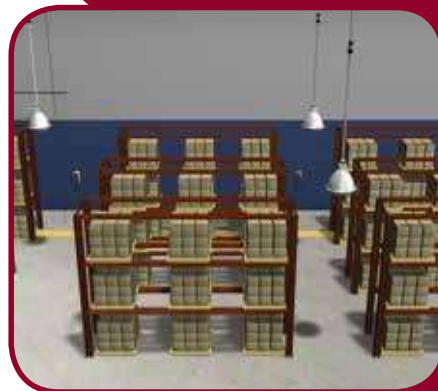


Table Of Contents

Washdown Areas

IEC Pin & Sleeve 6
Watertight Wiring Devices 6-7

Corrosive Environments

Corrosion Resistant Devices 8
Weatherproof Covers 8

Extreme Temperatures

Hazardous Location
Occupancy Sensors 9
50 Amp Twist-Lock® 9

Process Automation

Linkosity® 10
MotorQuick® 10
Twist-Lock® Wiring Devices 11
Panel-Safe® 11

Personnel Protection

GFCI Receptacles 12
Locking Switches 12
Portable GFCI 12
Switched Enclosures 13
TrukTrak® and TredTrak® 13
Cord and Hose Reels 13

Harsh Locations

Mechanical Interlocks 14
Disconnect Switches 14
Explosion Proof Lighting 15
Harsh Occupancy Sensors 15

Washdown Areas



Washdown environments can be challenging to clean. Not only do electrical products need to withstand high-pressure washdowns and harsh chemicals, but complete runoff is also important. Whether it's Watertight devices, Watertight Safety-Shroud® Twist-Lock® devices or IEC Pin & Sleeve devices, Hubbell's extensive offering of devices meet the challenge.

IEC Watertight and Switch-Rated Pin & Sleeve Devices

- The UV-stabilized, impact and corrosion-resistant PBT housing is designed to withstand harsh industrial environments
- Advantage™ Series Switch-Rated Pin & Sleeve has superior water ingress protection, UL witnessed IP69k and UL Type 4X and 12. Device is built to withstand wet and harsh environments
- The sleek and modern design of the ergonomic device is easy to keep clean making it ideal for hygienic food processing facilities



Rating Color Coded by Voltage	Advantage™ Series IP69k			IP67k		
	Plug	Switch-Rated Connector	Switch-Rated Receptacle	Connector	Receptacle	Plug
20A 120/240V	—	—	—	HBL420C12W	HBL420R12W	HBL420P12W
20A 3Ø 480V	—	—	—	HBL420C7W	HBL420R7W	HBL420P7W
30A 125/250V	HBLS430P12W	HBLS430C12W	HBLS430R12W	HBL430C12W	HBL430R12W	HBL430P12W
30A 3Ø 480V	HBLS430P7W	HBLS430C7W	HBLS430R7W	HBL430C7W	HBL430R7W	HBL430P7W
30A 3Ø 600V	HBLS430P5W	HBLS430C5W	HBLS430R5W	HBL430C5W	HBL430R5W	HBL430P5W
60A 120/240V	HBLS460P12W	HBLS460C12W	HBLS460R12W	HBL460C12W	HBL460R12W	HBL460P12W
60A 3Ø 480V	HBLS460P7W	HBLS460C7W	HBLS460R7W	HBL460C7W	HBL460R7W	HBL460P7W
60A 3Ø 600V	HBLS460P5W	HBLS460C5W	HBLS460R5W	HBL460C5W	HBL460R5W	HBL460P5W
100A 120/240V	—	—	—	HBL4100C12W	HBL4100R12W	HBL4100P12W

Watertight Safety-Shroud® Twist-Lock® Devices

- Constructed of highly impact-resistant PBT thermoplastic for a UL Type 4X rating in heavy duty environments
- Safety-Shroud virtually eliminates bent and broken plug blades, leading to longer equipment life while providing extra protection for personnel



Rating Color Coded by Voltage	Poles/Wires	Connector	Plug	Receptacles
20A 125V	2P/3W	HBL2313SW	HBL2311SW	HBL2310SW
20A 250V	2P/3W	HBL2323SW	HBL2321SW	HBL2320SW
20A 277V	2P/3W	HBL2333SW	HBL2331SW	HBL2330SW
20A 3Ø 250V AC	3P/4W	HBL2423SW	HBL2421SW	HBL2420SW
30A 3Ø 250V AC	3P/4W	HBL2723SW	HBL2721SW	HBL2720SW
30A 3Ø 480V AC	3P/4W	HBL2733SW	HBL2731SW	HBL2730SW



Water & Dust Ingress Protection:



IP69k Water Test

Extremely Hot (176°) and High Pressure Water (1450 psi) sprayed from various angles.

IP69k Dust Test

Device is placed in a dust chamber for 8 hours while a vacuum tries to pull dust into the sealed device.

UL 50E Type 4X Test

High Flow of Water (65 gallons of water per minute thru 1" hose) is directed at all joints of the enclosure for 5 minutes.

Advantage™ Series

Closure cover is spring-loaded to the open position, reminding users that the cover must be secured to ensure maximum ingress protection.





National Sanitation Foundation (NSF)



Known as The Most Trusted Name in Food Safety™, NSF International has been helping businesses in the agriculture, processing, food equipment, restaurant and retail industries to navigate the food safety and regulatory environment for nearly 70 years.

© 2014 NSF International. All rights reserved.

NEMA

Type No.	IEC Enclosure Class	Basic Description
4	IP66	Watertight, Dusttight Indoor, Outdoor
4X	IP66	Watertight, Dusttight, Corrosion-Resistant Indoor, Outdoor
6	IP67	Watertight, Dusttight Sleet (Ice) Resistant Indoor, Outdoor
12	IP52	Industrial Use, Dusttight, Driptight Indoor



Watertight Devices

- Smooth body design minimizes dirt and debris collection
- Industry best strain relief assures consistent sealing and max cord retention
- Corrosion-resistant nickel plated blades and stainless steel captive assembly screws
- NEMA 3R, 3RX, 4, 4X, 6, 6P, IP65, IP66, IP67



Straight Blade

Rating	Poles/Wires	Color	Plug	Connector	Receptacle with Lift Cover	Duplex Receptacle
NEMA 5-15 15A 125V	2P/3W	Yellow Black	HBL14W47A HBL14W47BK	HBL15W47A HBL15W47BK	HBL60W47 —	HBL60W47D* —
NEMA 6-15 15A 250V	2P/3W	Yellow	HBL14W49	HBL15W49	HBL60W49	HBL60W49D*
NEMA 5-20 20A 125V	2P/3W	Yellow	HBL14W33A	HBL15W33A	HBL60W33	HBL60W33D*
NEMA 6-20 20A 250V	2P/3W	Yellow	HBL14W48	HBL15W48	HBL60W48	HBL60W48D*



Twist-Lock® Devices

Rating	Poles/Wires	Color	Plug	Connector	Receptacle with Lift Cover	Duplex Receptacle
NEMA L5-15 15A 125V	2P/3W	Yellow Black	HBL24W47A HBL24W47BK	HBL25W47A HBL25W47BK	HBL65W47 —	HBL65W47D* —
NEMA L7-15 15A 277V	2P/3W	Yellow	HBL24W34	HBL25W34	HBL65W34	HBL65W34D*
NEMA L5-20 20A 125V	2P/3W	Yellow Black	HBL26W47 HBL26W47BK	HBL27W47 HBL27W47BK	HBL67W47 —	— —
NEMA L6-20 20A 250V	2P/3W	Yellow	HBL26W48	HBL27W48	HBL67W48	—
NEMA L7-20 20A 277V	2P/3W	Yellow	HBL26W49	HBL27W49	HBL67W49	—
NEMA L14-20 20A 125/250V	3P/4W	Yellow	HBL26W74	HBL27W74	HBL67W74	—
NEMA L15-20 20A 3Ø 250V AC	3P/4W	Yellow Black	HBL26W75 HBL26W75BK	HBL27W75 HBL27W75BK	HBL67W75 —	— —
NEMA L5-30 30A 125V	2P/3W	Yellow Black	HBL28W47 HBL28W47BK	HBL29W47 HBL29W47BK	HBL69W47 —	— —
NEMA L7-30 30A 277V	2P/3W	Yellow	HBL28W49	HBL29W49	HBL69W49	—
NEMA L14-30 30A 125/250V	3P/4W	Yellow	HBL28W74	HBL29W74	HBL69W74	—

Corrosive Environments



Food processing areas can be particularly corrosive for electrical connections, calling for an extra level of safety and protection. Hubbell offers a wide range of plugs, connectors, and receptacles that are specifically designed to withstand corrosive environments.



Weather Resistant Receptacles

Per National Electrical Code (NEC®) Article 406.9; all 125 and 250 volt, 15 and 20 amp non-locking receptacles for use in damp or wet locations shall be a listed weather resistant type. Listed devices are required to have a WR marking on the face visible when installed.



NEC® 110.11 Electrical Installations

Unless identified for use in the operating environment, no conductors or equipment shall be located in damp or wet locations.



Corrosion Resistant Devices

- UV stabilized, chemical and oil resistant receptacle faces are impact resistant in refrigerated environments
- Nickel plated contacts and stainless steel hardware protect metallic components from corrosion
- Powerful nylon cord grips on plugs and connectors prevent wire strain on terminals and prevent cord pull-outs



Straight Blade

Rating	Poles/Wires	Connector	Plug	Duplex Receptacle	Single Receptacle	Duplex Lift Cover
15A 125V	2P/3W	HBL52CM69C	HBL52CM66C	HBL52CM62	HBL52CM61	—
20A 125V	2P/3W	HBL53CM69C	HBL53CM66C	HBL53CM62	HBL53CM61	HBL52CM21



Twist-Lock®

Rating	Poles/Wires	Connector	Plug	Duplex Receptacle	Single Receptacle	Lift Cover
15A 125V	2P/3W	HBL47CM29C	HBL47CM20C	HBL47CM00	—	HBL74CM25WOA
20A 125V	2P/3W	HBL23CM13	HBL23CM11	—	HBL23CM10	HBL74CM25WOA

Weatherproof Covers

- Available in either cast aluminum or impact and UV resistant PBT materials
- Stainless steel springs and mounting hardware makes for superior corrosion resistance
- For FS/FD box mounting For device mounting



Covers

Duplex			GFCI	
Thermoplastic for Vertical Mounting		Duplex Cast Aluminum for Horizontal Mounting	Thermoplastic Vertical Mounting	Thermoplastic Horizontal Mounting
Gray	Yellow	Aluminum	Gray	Gray
HBL5221	HBL52CM21	HBL5206WO	HBL5226	HBL5226H
HBL5222	HBL52CM22	HBL5205WO		



Receptacle Covers Vertical FS/FD Mounting

Color	Face Diameter inches (mm) 1.36" - 1.39" (34.5-35.3)		Face Diameter inches (mm) 1.55" - 1.58" (39.4-35.3)		Face Diameter inches (mm) 1.68" - 1.72" (42.7-43.7)	
	Thermoplastic	Cast Aluminum	Thermoplastic	Cast Aluminum	Thermoplastic	Cast Aluminum
Gray	HBL7423WO	HBL7420	HBL7425WOA	HBL7420	HBL7424WO	HBL3393
Yellow	HBL74CM23WO	—	HBL74CM25WOA	—	HBL74CM24WO	—

Wet Locations: Thermoplastic w/ cover "open" Cast Aluminum w/ cover "closed"

Extreme Temperatures



Extreme temperature changes can wreak havoc on electrical components and devices that aren't constructed to withstand a food processing environment. Hubbell products are designed to withstand temperature fluctuations and accommodate expansion and contraction when necessary.



H-MOSS®|MAXX™ Harsh Sensors

- Watertight occupancy sensor is ideal for energy savings in harsh environments
- Line and low voltage options are available
- Watertight OPTIMYZER is IP65, NEMA 3R watertight and outdoor rated

Outdoor Rated Watertight Wall Mount PIR Sensor		IP66, NEMA 4X
Description	Voltage	Catalog Number
Heavy duty wall or pendant mount PIR sensor; -40°F to 149°F (-40°C to 65°C) operating temperature range; isolated relay, photocell and 160° of coverage	24V DC	AHP1600WRP*



* Must use control unit CU300HD

Extreme Temperature PIR Ceiling Sensor		
Description	24V DC Sensor	NEMA 4X Enclosure
Upgraded ceiling PIR sensor; isolated relay and photocell; -40°F to 149°F (-40°C to 65°C) operating temperature range; Use ACIPE to make NEMA 4X watertight	AHP1500CRP*	ACIPE



* Must use control unit CU300HD

Watertight OPTIMYZER®		IP66, NEMA 3R
Description	Voltage	Catalog Number
PIR sensor, relay with photocell	120-347V AC	HMHB21UPCW
PIR sensor, 2 relays with photocell	120-347V AC	HMHB22UPCW
PIR sensor, 1 double pole relay with photocell	208, 240V AC	HMHB23APCW
PIR sensor, 1 double pole relay with photocell	480V AC	HMHB23BPCW
PIR sensor with photocell	24V DC	HMHB2LVPCW*



* Must use control unit CU300HD

Control Unit		
Description	Voltage	Catalog Number
Control Unit for use with AHP1600WRP , AHP1500CRP and HMHB2LVPCW	120-277V AC	CU300HD



50 Amp Twist-Lock®

- Thermoplastic polyester interior of plugs provides heat resistance and impact strength
- Super tough nylon housing offers better impact qualities
- Padlock capable shroud allows compliance to OSHA lockout tagout regulation 29 CFR 1910 .147



NEMA Rating	Poles/Wires	Plug	Connector	Receptacle	Flanged Inlet
50A 125V	2P/3W	CS6361C	CS6360C	CS6370	CS6377
50A 250V	2P/3W	CS8265C	CS8264C	CS8269	CS8275
50A 480V	2P/3W	CS8465C	CS8464C	CS8469	CS8475
50A 125/250	3P/4W	CS6365C	CS6364C	CS6369	CS6375
50A 3Ø 250	3P/4W	CS8365C	CS8364C	CS8369	CS8375
50A 3Ø 480	3P/4W	CS8165C	CS8164C	CS8169	CS8175



Whether there is a need to comply with codes and standards such as provisions **9.4.1.1 of ASHRAE 90.1** and **130.1(c) of CEC Title 24** for Automatic Lighting Shutoff or to simply achieve significant energy savings, H-MOSS®|MAXX™ from Hubbell is the ideal solution for those indoor or outdoor harsh environments where heavy duty devices are required.

Process Automation



Hubbell's complete line of electrical components and devices includes cost-effective alternatives to conventional wiring methods, along with fast installation and excellent performance. It also allows for easy retrofits to existing hard-wired installations.

Linkosity®

- Reconfigurable factory defined assemblies that can be easily installed as a cost effective alternative to conventional wiring methods, supports moves, adds and changes
- Enables fast installation and high technical performance for 20A and 30A circuits up to 600V

Cables and Receptacles

Power Components 20A, 30A up to 600V



Device Type	Ratings	Wires	Conductor Colors**	Length (ft.)
PH Double Ended Cable - Male/Female Straight	20 20A up to 600V	02 - 05	PA Green/Yellow; Black (all others)	001 1'
PM Male Single Ended Straight				005 5'
PN Male Single Ended 90°	23 20A up to 600V Specialty construction (Includes isolated ground on 6 wire and 10AWG super neutral conductor on 5 and 6 wire devices)	03 - 06	PB Green/Yellow White Black (all others)	010 10'
PF Female Single Ended Straight				015 15'
PG Female Single Ended 90°				020 20'
PQ Double Ended Cable with Female 90°				025 25'
PR Double Ended Cable with Male 90°				030 30'
PS Double Ended Cable with (2) 90° Connectors				035 35'
RF Female Receptacle; ½" N.P.T. rear thread				040 40'
RM Male Receptacle (Inlet); ½" N.P.T. rear thread				045 45'
	30 30A up to 600V	04	**Other color codes available upon request	050 50'

Example Catalog Number: **PH2306PB050**

LINKOSITY® Tees

Description	Catalog Numbers
M/F/F Tee, 20A, 2P	TX2002002002T00
M/F/F Tee, 20A, 3P	TX2003002003T00
M/F/F Tee, 20A, 5P	TX2005002005T00
M/F/F Tee, 20A SNIG, 4P	TX2304002304T00
M/F/F Tee, 20A SNIG, A Phase Tap	TX2306002304A00
M/F/F Tee, 20A SNIG, B Phase Tap	TX2306002304B00
M/F/F Tee, 30A, 4P	TX3004003004T00

Closure Caps

Description	For use with	
	Female Receptacle	Male Inlet
20A and 30A Receptacle Closure Cap	CCMBC	CCFBC

MotorQuick®

- Combines Circuit-Lock® motor disconnect with plug-and-play LINKOSITY® system for faster installation and replacement of motors.
- Easily retrofits to existing hard wired installations with LINKOSITY® components.
- **HBLDS3** series are IP69k and certified by **NSF** for hygiene in food processing applications.



Description	Type 1 HBL1389D Non-Metallic	Type 2 HBLDS3 Non-Metallic	Type 2 HBLDS3SS Stainless Steel	Type 2 HBLDS3SSR Stainless Steel
30A 3 Pole 600V AC With (1) pre-wired LINKOSITY® female receptacle (load side)	HBL1389MQR	HBLDS3MQR	HBLDS3SSMQR	HBLDS3SSRMQR
With 5 ft. pre-wired LINKOSITY® female cable (load side)	HBL1389MQ5	HBLDS3MQ5	HBLDS3SSMQ5	HBLDS3SSRMQ5
With (1) pre-wired LINKOSITY® male receptacle (line side) and (1) pre-wired LINKOSITY® female receptacle (load side)	HBL1389MQR2	HBLDS3MQR2	HBLDS3SSMQR2	HBLDS3SSRMQR2



NEC® 430.102 (B)

(1) Separate Motor Disconnect. A disconnecting means for the motor shall be located in sight from the motor location and the driven machinery locations.

(2) Controller Disconnect. The controller disconnecting means required in accordance with 430.102(1) shall be permitted to serve as the disconnecting means for the motor if it is in sight from the motor location and the driven machinery location.



Twist-Lock® Plugs, Connectors and Receptacles

- Integral dust shield protects wiring chamber from dust or contaminants
- Tough ribbed nylon housing provides a secure grip with impact and chemical resistance
- Two part cord grip tightens with two screws for maximum strain relief

Hubbell Twist-Lock®... The Industry Standard!



NEMA Rating Color Coded by Voltage	Poles/Wires	Plug	Connector	Receptacle
15A 125V AC	2P/3W	HBL4720C	HBL4729C	HBL4710
20A 125V AC	2P/3W	HBL2311	HBL2313	HBL2310
20A 250V AC	2P/3W	HBL2321	HBL2323	HBL2320
20A 3Ø 250V AC	3P/4W	HBL2421	HBL2423	HBL2420
20A 3Ø 480V AC	3P/4W	HBL2431	HBL2433	HBL2430
30A 3Ø 250V AC	3P/4W	HBL2721	HBL2723	HBL2720
30A 3Ø 480V AC	3P/4W	HBL2731	HBL2733	HBL2730

Panel-Safe®

- Available in Type 4, 12 and 4X versions with protective clear cover
- Provides overcurrent protection for power ports
- Ensures safety with finger-safe contacts and Hubbell GFCI functionality



Description	NEMA TYPE 4, 12	NEMA TYPE 4X
Power Only 20A 125V GFCI with In-Cabinet Receptacle	PR20	—
Data Only Cat. 5e Ethernet Access only DB9 Interface Connector only DH + Combo (DB9/8M Din) and Cat. 5e Ethernet	P5E PDB9 PDH5E	P4X5E — —
Power and Data 20A 125V GFCI with In-Cabinet Receptacle and Cat. 5e Ethernet Access	PR205E	PR4X205E
20A 125V GFCI with In-Cabinet Receptacle, Cat. 5e Ethernet Access and 3A Circuit Breaker	PR205EB	PR4X205EB
20A 125V GFCI Power and Cat. 5e Ethernet, DH + Combo (DB9/8M Din)	P20DH5E	—
15A 125V Power and Cat. 5e Ethernet Access	P155E	P4X155E
15A 125V Power, Cat. 5e Ethernet Access and 3A Circuit Breaker	P155EB	P4X155EB
15A 125V Power and (2) Cat. 5e Ethernet Access	P155E2	—



NFPA 79 Section 16.1.1(6) 16.1.2 Control Panel Utility Receptacle Standard

- All utility receptacles must be GFCI protected.
- All external utility receptacles must be covered.
- All covers must maintain the enclosure rating.

NFPA 70E:

- Electrical equipment enclosure scan ONLY be accessed by qualified personnel with extensive protective clothing and equipment, including fire-resistant suits and hoods with non-conductive wands.



Personnel Protection



The combination of GFCI protection and tamper-resistant safety provides an ideal one-stop solution. Hubbell's tamper-resistant GFCI devices also include a weather-resistant rating per NEC 406.9, providing UV and corrosion resistance.



For non-residential installations all 125V 15 and 20 AMP receptacles installed in locations specified in NEC® Article 210.8(B)(1) to (8) shall have ground fault circuit interrupter protection for personnel. These areas include:

- (1) Bathrooms
- (2) Kitchens
- (3) Roof Tops
- (4) Outdoors
- (5) Sinks (within 6' of edge)
- (6) Indoor Wet Locations
- (7) Locker Rooms / Shower Facilities
- (8) Garages / Service Bays



GFCI Receptacles

- Self-Test units continually tests and monitors for protection automatically
- No power at device face if reverse wired, eliminating false assumption of protection
- Patented tamper-resistant design limits improper access to energized contacts



AUTOGUARD® Self Test GFCI Receptacles

Description	Color	15A 125V	20A 125V
Flush, polyester face; back and side wired; multiple drive screws; 10 kA Short Circuit Current Rating	Black Brown Gray Ivory Red White	GFR5262SGBK GFR5262SG GFR5262SGGY GFR5262SGI GFR5262SGR GFR5262SGW	GFR5362SGBK GFR5362SG GFR5362SGGY GFR5362SGI GFR5362SGR GFR5362SGW

Locking Switches

- Prevents unauthorized control of lighting or ventilation control
- Keys supplied with each locking switch
- One piece integral grounding terminal provides a low resistance ground path

AC Barrel Key

20A 120-277 Volt

Pole	20A
Single Pole	HBL1221RKL
Double Pole	HBL1222RKL
Three-Way	HBL1223RKL
Four-Way	HBL1224RKL
Barrel key replacement	HBL1209RKL



Locking Switches

120-277 Volt

Pole	15 Amp	20 Amp
Single Pole	HBL1201L	HBL1221L
Double Pole	HBL1202L	HBL1222L
Three-Way	HBL1203L	HBL1223L
Four-Way	HBL1204L	HBL1224L
Replacement key	HBL1209	



Circuit Guard® Portable GFCI

- Provides a watertight housing for maximum safety in harsh environments
- Available with either automatic and manual set feature to fit the application
- Bright indicator light provides fault confirmation from a distance



Portable GFCI Line Cords

Description	Length	Industrial Grade		Commercial Grade Single		Commercial Grade Triple Tap	
		Automatic	Manual	Automatic	Manual	Automatic	Manual
15A 120V AC	18 in.	GFP4C15A	GFP4C15M	—	—	—	—
	2 ft.	—	—	GFP2CA	GFP2CM	GFP2TTA	GFP2TTM
	6 ft.	GFP6C15A	GFP6C15M	—	—	—	—
	25 ft.	GFP25C15A	GFP25C15M	GFP25CA	GFP25CM	GFP25TTA	GFP25TTM
20A 120V AC	3 ft.	—	GFP3C20M	—	—	—	—

In-Line GFCI

2 ft. cord length; 15A and 20A 120V AC

	Automatic	Manual
Single	GFPIL15125A	GFPIL15125M
Triple Tap	GFPIL15125TRIA	GFPIL15125TRIM
15A		
Locking	GFPIL20250LKA	GFPIL20250LKM
20A		



Wired-On Straight Blade Portable GFCI Plugs

Industrial Grade Manual Set; 15A 125V	
Black	GFP5266C
Yellow	GFP5266CY
Black w/ 1' line cord	GFP1C
Commercial Grade	
Field	Automatic
Wireable	Manual
	GFP515A GFP515



Switched Enclosures

- UL Listed as a manual motor controller and "suitable as a motor disconnect"
- UL witnessed IP69k and UL Type 4x and 12 environmental ratings
- Certified by NSF for hygiene in food processing applications

Labelless Non-Metallic and Stainless Steel Disconnect Switch

Amps	Stainless Steel		Non-Metallic Square Top
	Square Top	Sloped Top	
30A	HBLDS3SS	HBLDS3SSR	HBLDS3
60A	HBLDS6SS	HBLDS6SSR	HBLDS6
100A	HBLDS10SS	HBLDS10SSR	HBLDS10

Note: for enclosure with auxiliary contact, **HBLAC1**, please add an "AC" suffix to the catalog number.

For disconnect switch containing auxiliary contact **HBLAC2** for use with Variable Frequency Drives, add a "VFD" suffix to the catalog number.



UL355 4.3, 4.4

Cord Reels, that employ Ground-Fault Circuit Interrupter outlet(s) and are connected to the power supply by means of flexible cord with an attachment plug and/or that employ slip rings, shall be provided with open neutral protection as part of the GFCI.

Circuit-Lock® Fused Disconnect Switches

Description	30A	60A
Disconnect Switch	FDS30*	FDS60*
Auxiliary contacts, normally open, A600 pilot duty	ACFSNO	
Auxiliary contacts, normally closed, A600 pilot duty	ACFSNC	

*Class "J" fuses not included.

30A Units supplied with (2) 1 in. N.P.T. raintight conduit fittings.

60A Units supplied with (2) 1 1/4 in. N.P.T. raintight conduit fittings.



TrukTrak® and TredTrak®

- Safeguards cables, hoses and cords from vehicle and pedestrian traffic
- TrukTrak® is ideal for industrial environments where trucks and forklifts are present
- TredTrak® supports pedestrian and light vehicle traffic

TrukTrak® and TredTrak® Systems

Description	TrukTrak®	TredTrak®
5 Channel, blue and yellow	HBLTT5B	HBLTRED5B
5 Channel end caps (pair only), yellow	HBLTT5ECB	HBLTRED5ECB
3 Channel, blue and yellow	HBLTT3B	—
3 Channel end caps (pair only), yellow	HBLTT3ECB	—
2 Channel, blue and yellow	HBLTT2B	—



NEC® 110.26(E)(2)

Outdoor. Outdoor electrical equipment shall be installed in suitable enclosures and shall be protected from accidental contact by unauthorized personnel, or by vehicular traffic.

Industrial Cord Reels and Hose and Air Reels

- Keeps cords and hoses organized and off the floor, saves time and money and improves safety while extending product life
- Provide safe convenient power and lighting for demanding industrial applications and environments
- Powder coated steel construction can be ceiling, wall or bench mounted

Industrial Power Cord Reels

12/3 SJEO Cable Type, 125V



Cord End	Description	NEMA Style	Catalog Number
Connector	HBL5269C 15A	5-15R	HBL45123C
	HBL5369C 20A	5-20R	HBL45123C20
Portable duplex outlet box	15A gray duplex	5-15R	HBL45123R
	20A gray duplex	5-20R	HBL45123R20
	15A gray GFCI duplex	5-15R	HBL45123GF15
	20A gray GFCI duplex	5-20R	HBL45123GF20
Pivot Base 330° Rotation		—	HBL340PB

Air/Water Hose Reels

Max Pressure 300 PSI



Cord End	Cable Ft.	Catalog Number
Low Pressure 1/4" ID.	35 (10.7)	HBLHR2535
	50 (15.2)	HBLHR2550
Low Pressure 3/8" ID.	25 (7.6)	HBLHR3825
	50 (15.2)	HBLHR3850
	70 (21.3)	HBLHR3870
Low Pressure 1/2" ID.	35 (10.7)	HBLHR5035
	50 (15.2)	HBLHR5050



Harsh Locations



Hubbell's unfused disconnect and mechanical interlock switches are ideal for applications containing flammable gases or vapors and ignitable dusts or fibers. Hubbell devices are also suitable for use in outdoor or indoor damp, wet, and dirty locations, or in areas where frequent wash downs, heavy rain, or water-spray routinely occurs.

Hazardous Location Non-Fused UL1686 Mechanical Interlocks

- Plug and switch are interlocked for superior safety
- UL1686 C1 listed and fully interchangeable with other UL1686 C1 devices
- Compact size and footprint for easy placement
- NEMA 4X with receptacle lid turned shut or with plug locking ring tightened

Description	Circuit	Receptacle	Plug
30 AMP 600V AC	2W 3P 3W 4P	HBLVSQ3023 HBLVSQ3034	HBLVP3385 HBLVP3485
60 AMP 600V AC	2W 3P 3W 4P	HBLVSQ6023 HBLVSQ6034	HBLVP6385 HBLVP6485

Notes: HBLVSQ 30 Amp models come standard with 1" drilled and tapped conduit openings top and bottom plus two 1" x 3/4" reducers and one 3/4" close-up plug for maximum flexibility. 60 amp models come with one 1 1/2" opening on top and bottom and one 1 1/2" close-up plug.



NFPA 33 Standard for Spraying Applications Using Flammable or Combustible Materials covers spray application of flammable or combustible materials by a variety of methods. Contains requirements for the maintenance of safe conditions as well as personal safety.

NFPA 34 Standard for Dipping, Coating and Printing Processes Using Flammable or Combustible Liquids covers fire and explosive hazards. Includes water-borne and water reducible materials.

Hazardous Location Non-Fused Disconnect Switches

- Compact size provides application flexibility and cost savings
- Fewer cover bolts reduces installation and maintenance time
- Removable ductile mounting feet adjust to irregular mounting surfaces
- UL 98 certified switch
 - Class I, Div. 1 & 2, Groups B,C,D
 - Class I, Zones 1 & 2, Groups IIB+ H2, IIA
 - Class II, Div. 1 & 2, Groups E,F,G
 - Class III
 - NEMA 3, 4, 4X, 7(B,C,D), 9(E,F,G)

Description	Rating	Catalog Number
Disconnect switch, 3 Pole 600V AC/230V DC	30A	HBLB7NFD13A
	60A	HBLB7NFD26A
	100A	HBLB7NFD21A
Disconnect switch with auxiliary contact, 3 Pole 600V AC/230V DC	30A	HBLB7NFD13AA
	60A	HBLB7NFD26AA
	100A	HBLB7NFD21AA





Hazardous Location/Confined Space Lighting

- Fluorescent and incandescent light bulbs styles available
- Low voltage confined space entry lights are suitable for hazardous locations

Hazardous Location Lights

Description	Wattage	Lumen Output	Cord Type	Cord Length	Catalog Number
Fluorescent, Class 1, Div 1, Groups C & D, Class 2, Div 1, Groups F & G, 12V, inline transformer	26	1800	16/3 SOW	60 ft.	HBLXF6012V
Incandescent, Class 1, Div1, Groups C & D, 12V, inline transformer	75	720	16/3 SOW	60 ft.	HBLXI6012V
Fluorescent, Class 1, Div 1, Groups C & D, Class 2, Div 1, Groups F & G, 120V, less plug	26	1800	16/3 SOW	50 ft.	HBLXF50120V
Incandescent, Class 1, Div 1 Groups C & D, 120V, less plug	100	1230	16/3 SOW	50 ft.	HBLXI50120V



NEC® 500-503, 505 covers the requirements for electrical installations in locations classified as hazardous due to the materials handled, processed, or stored in those locations.

NEC 516 covers the regular or frequent application of flammable liquids, and combustible liquids, and combustible powder by spray operations at temperatures above flash points.

H-MOSS®|MAXX™ Harsh Sensors

- Watertight occupancy sensor is ideal for energy savings in harsh environments
- Line and low voltage option are available
- Watertight OPTIMYZER® is IP65, NEMA 3R watertight and outdoor rated

Outdoor Rated Watertight Wall Mount PIR Sensor

IP66, NEMA 4X

Description	Voltage	Catalog Number
Heavy duty wall or pendant mount PIR sensor; -40°F to 149°F (-40°C to 65°C) operating temperature range; isolated relay, photocell and 160° of coverage	24V DC	AHP1600WRP*

* Must use control unit CU300HD



Extreme Temperature PIR Ceiling Sensor

Description	24V DC Sensor	NEMA 4X Enclosure
Upgraded ceiling PIR sensor; isolated relay and photocell; -40°F to 149°F (-40°C to 65°C) operating temperature range; Use ACIPE to make NEMA 4X watertight	AHP1500CRP*	ACIPE

* Must use control unit CU300HD

Watertight OPTIMYZER®

IP66, NEMA 3R

Description	Voltage	Catalog Number
PIR sensor, relay with photocell	120-347V AC	HMHB21UPCW
PIR sensor, 2 relays with photocell	120-347V AC	HMHB22UPCW
PIR sensor, 1 double pole relay with photocell	208, 240V AC	HMHB23APCW
PIR sensor, 1 double pole relay with photocell	480V AC	HMHB23BPCW
PIR sensor with photocell	24V DC	HMHB2LVPCW*

* Must use control unit CU300HD



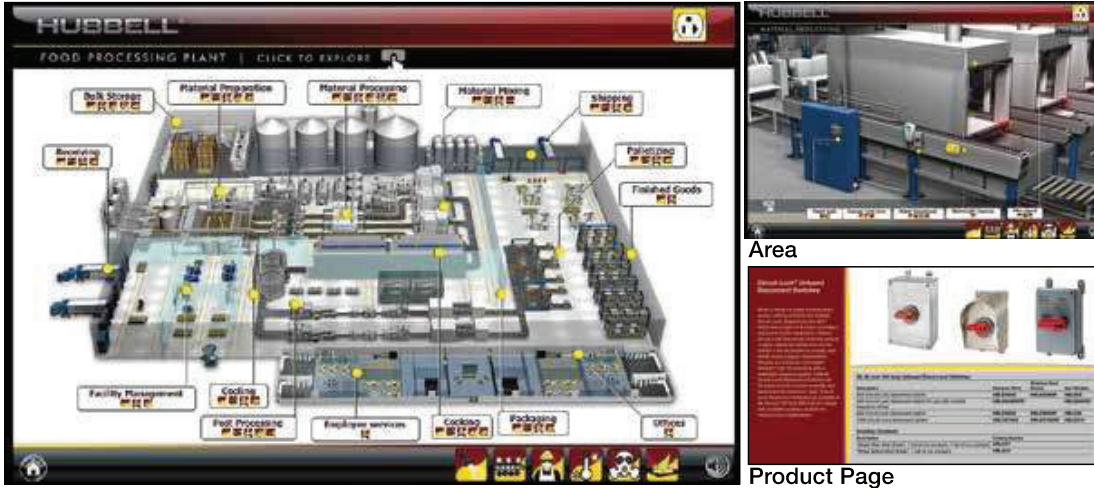
Control Unit

Description	Voltage	Catalog Number
Control Unit for use with AHP1600WRP , AHP1500CRP and HMHB2LVPCW	120-277V AC	CU300HD



Available eTools

Food Processing eTour



This interactive, virtual tour of a food processing plant takes visitors through 15 unique spaces that include food processing areas such as material preparation, mixing and processing as well as cooling, cooking and packaging. Other areas include employee services, facility management and offices. As users navigate their way through the virtual plant, the eTour demonstrates where and how Hubbell products can be deployed to offer safety, efficiency, performance, and durability solutions in these spaces. Visit www.hubbell-wiring.com to take the tour.

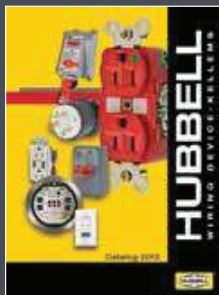
Twist-Lock® App

When you're on the go... Use the New Twist-Lock® App from Hubbell.

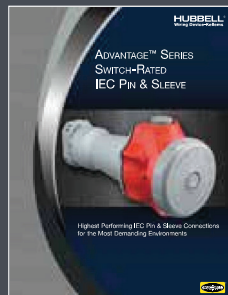


Available Literature

Hubbell offers an extensive literature library for product support. Downloadable PDFs are available on line.



Hubbell Wiring Device-Kellems Catalog



Advantage Series Switched Pin & Sleeve



Watertight Wiring Devices



Circuit-Lock® and MotorQuick

HUBBELL®
Wiring Device-Kellems



For more information contact your Werner Electric Supply Account Representative.

WERNER
ELECTRIC SUPPLY
WernerElectric.com

Hubbell Wiring Device-Kellems
Hubbell Incorporated (Delaware)
40 Waterview Drive, Shelton, CT 06484
Phone (800) 288-6000 • FAX (800) 255-1031

Printed in U.S.A. Specifications subject to change without notice. © Registered trademark of Hubbell Incorporated.

WLBVM013 1/16