

# IP69/69K MAXIMUM PROTECTION

**WERNER**  
ELECTRIC SUPPLY



Safeguard  
your electrical  
equipment with  
premium products.

# OUR MISSION

Unwavering commitment to our customers, families, communities and each other.

Unwavering commitment means we are dedicated to your long-term success. Years of industry knowledge and service paired with a passion for innovation generates the value your business deserves.

Driven by a culture of problem solving and collaboration, our experienced team members work with you to find fresh solutions, so your production is maintained at peak performance. In other words, we:

- Create personalized solutions to keep you in operation and minimize downtime
- Deliver products that meet safety and hygienic compliance and standards
- Provide the foundation for informed, real-time decision making to improve productivity
- Improve your maintenance proactively through predictive condition monitoring systems

With access to leading brands, thousands of components and the extensive depth of our technical staff, together, we can overcome even the most complex challenges.

**Partner with Werner Electric  
and experience the value  
of a solutions provider.**



## Enclosures



### HyShed Enclosure

- Replaceable, FDA-approved blue silicone gasket
- Internally mounted hinges reduce bacteria catch points
- Hygienic latching mechanisms
- 3-A System Component Qualification Certificate



### Extreme Environments Enclosure

- Includes replaceable, adhesive gasket
- Innovative stainless steel lockable hinge
- Tool-free, removable stainless steel door



## Air Conditioners



Without cover



With cover

### Extreme Air Conditioner

- FDA-approved neoprene gasket
- 10° sloped top, stainless steel shroud
- E-coated ambient coil for longer life dust resistance
- No ingress for up to 8" of water



## HMI (Human Machine Interface)



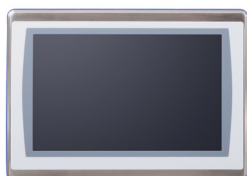
### HyShed Pushbutton Enclosure

- Enclosures can be modified to accept Rockwell Automation 800K piezoelectric pushbuttons to maintain IP69/69K rating
- Can be ordered with or without pushbuttons installed
- Available in 30.5 mm or 22.5 mm, with 1, 2, 3, 4, 5 or 6 holes



### Syspend

- 20° sloped top facilitates runoff of water and cleaning solutions
- Fully concealed gasket for complete washdown protection
- Integrated side handles allow for easy repositioning of enclosures



### PanelView Plus 7

- 304 stainless steel bezels
- Replaceable, FDA-approved blue silicone gasket
- Conformal-coating available for all touch-only terminals and keypads
- NSF certified



## Pushbuttons



### Pushbuttons

- Minimize production loss due to cleaning procedures
- Corrosion resistant to caustic washdown solutions
- Smooth, crevice-free button surface decreases bacteria growth potential



## Wire Entry Devices



### Cable Entry Seals

- Able to withstand extreme temperatures
- Protection for equipment against caustic solutions in wet environments
- Safeguard in high-pressure, high-temperature washdown areas
- Low-profile frame
- Seals multiple cables and pipes in one opening
- Pass pre-terminated cables without cutting off connectors
  - Maintain integrity of connection
  - Shorten installation time
  - Reduce installation costs
- Easy re-entry into the system for changes or upgrades



### Type KDL/H Cable Entry System

- High packing density
- Extremely small footprint
- Tool-free assembly
- Kink-free cables and hosing

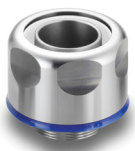


## Conduit Fittings



### Cable Glands – FSCG Series

- NSF-approved food and beverage cable glands
- Allows hygienic termination of cables into equipment



### Liquidtight Conduit Fittings

- Unique, one-piece fitting made from Type 316 stainless steel
- FDA-compliant seal materials
- IP67, IP68 and IP69 protection
- UL listed to UL 514B
- Meets NSF 14159-1-2014 and NSF 169-2009 standards



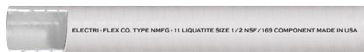


## Flexible Conduit



### Adaptflex® Bacteria-resistant Cable Protection Solution

- Protects complex processing equipment with sensitive electrical wiring systems, controls and automation
- IP69 rating for high-pressure, high-temperature washdown applications



### Type NMFG Food Grade Nonmetallic Liquidtight Conduit

- Excellent protection to wiring from abrasion, sunlight, mild acids, alkaline and oils
- Smooth exterior for easy washdown
- Resistant to bleach (Sodium Hypochlorite)
- Will not promote bacteria growth



### Type LSSFG Liquidtight Stainless Steel Flexible Conduit

- Non-UL
- Provides a liquidtight flexible protective wiring raceway
- Smooth exterior for easy washdown
- Resistant to bleach (Sodium Hypochlorite)
- Will not promote bacteria growth



## Indicator Lights



### Indicator Lights

- Available in 24 VDC and 120-240 VAC 50/60 Hz
- LED has eight, on-board flash patterns, factory default is flashing at 60 FPM
- Optional indicator rings in six colors: black, blue, green, magenta, red and yellow
- UL and cUL Listed for Class I, Division 2, Groups A, B, C and D; Class II, Division 2, Groups F and G; Class III



## Voltage Detection



### Grace ChekVolt

- Voltage Presence and Voltage Absence in one device
- Easy installation through 30.5 mm hole
- Use your trusted meter



# Connectors



## Russellstoll® DuraGard® Waterproof Connections

- 30 amp standard service
- IP69K washdown pin and sleeve quick disconnect



## Watertight Wiring Devices

- NSF certified
- Patented Gotcha® ring and collapsible bushing yields the industry's best strain relief
- Triple-bypass seal keeps water away from electrical connections
- Replacement components available to keep MRO costs down



## Wetguard® Plug and Connector

- Constructed of impact-modified nylon and receptacles and inlets made of PBT
- Available with alternate screwless clamp or power indication with Inform™ Technology
- Nickel-plated brass pins and sleeves for added corrosion resistance
- NSF-certified sanitary design for use in food and beverage facilities



## Han® F+B

- Reduces downtime
- Faster than hard-wired solutions
- One type of hood or housing
- Degree of protection: IP67 or IP69K
- Enables machine modularization
- Reduces installation and maintenance costs



## Watertite® Extreme Wiring Devices

- The unique Advanced Vulcanized Silicone Rubber husk inhibits bacterial growth
- Exceptional durability
- NSF certified, UL Listed, CSA Certified, UV Stable
- Maintains flexibility and sealing qualities in extreme temperatures, demonstrated by IP67, IP69K, NEMA Type 4X and 6P ratings



## Servo Motors

---



### VPH Servo Motors

- NSF, 3A and EHEDG certified
- Six frame sizes from 63-165 mm
- For use with Kinetix 5500 & 5700 Drives
- Peak torque 73.5 Nm, speeds up to 8,000 RPM



### cyber<sup>®</sup> dynamic line Servo Motor

- Meets EHEDG standards
- 40 mm frame size
- 48 VDC
- Peak torque of .96 Nm, speeds up to 5,575 RPM



## Gear Boxes

---



### HDV/HDP Servo Gearbox

- Hygienic design meets FDA, 3A and EHEDG standards
- Food-grade lubrication
- No dead spaces



## Actuators

---



### Stainless Steel Linear Actuators

- Hygienic design
- Welded connections, no gaskets
- Optional water cooling
- Forces up to 490 lbf, velocities up to 4.6 m/s



## Robotics

---



### Stainless Steel Delta Robots

- Work envelopes ranging from 500 mm to 1600 mm
- 3 kg and 15 kg payload models
- Select models support Rockwell VPH motors
- Entirely bare 316L stainless steel body



# Disconnects



## inSIGHT™ Disconnect

- NSF certified
- Secondary means of visual confirmation on all phases
- Permanent labelless design
- Provides critical troubleshooting information such as welded contact or dropped phase



## Advantage™ Series Pin and Sleeve

- Switch-rated disconnect available in receptacle or connector body
- Available in 30, 60 and 100A
- Power-indicating LEDs provide visual verification when connected
- Permanent labelless design



## Plugs and Receptacles

- Automatic watertight connection
- Provides the safety of a switch
- Ensures arc flash protection
- Enables quick equipment changeouts
- Rated up to 200 amps, 600 volts and 100 hp



## Powerswitch® Stainless Steel Disconnect Switches

- 3/4" standoff from mounting surface allows for easy cleaning
- NSF certified and IP69K rated
- Overmold handle provides firm grip in wet environments
- Type 304 stainless steel resists corrosion, heat and abuse





# Building Lighting

---



## EMX LED

- Available in 2' length 3,000-9,000 lumens and 4' length 6,000-18,000 lumens
- Standard ceiling mount bracket with optional surface wall or angle brackets and suspension kits
- DLC configurations available for Focus on Energy Rebates
- Optional standalone controls and network controls available



## Vantage® LED

- Wide range of lumen packages ranging from 12,000-32,000 lumens
- Multiple lens materials and distributions
- Standard 0-10 V dimming driver
- Optional standalone controls and network controls available



## FHE LED

- Available in 2' length 9,000-24,000 lumens and 4' length 18,000-40,000 lumens
- Multiple lens materials and distributions
- Optional standalone controls and network controls available
- DLC configurations available for Focus on Energy Rebates



## VT4S LED

- Compact and durable fiberglass-reinforced polyester housing
- Clear or frosted lens made from acrylic or high-impact polycarbonate
- 2' housing delivers up to 18,000 lumens
- DLC configurations available for Focus on Energy Rebates

**Metalux**

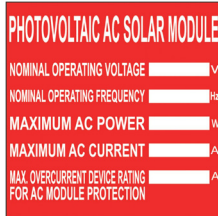


## DuroSite® LED Linear – NSF

- Operating temperature -40 °F
- NSF rated
- Optional battery backup
- Made in the USA



## Labels



### Super-tack Polyester Solar Labels

- Thermal transfer solar labels meet required safety standards for PV installation labeling
- Outdoor rated, designed with high resistance to direct UV exposure
- Meets DIN 40050-9
- UL969 recognized. File #MH14979, cUL recognized. C22.2 No. 0.15.01 File #MH14979

**PANDUIT®**



### Raised Panel Component Labels

- Raised thermal transfer printable surface with high-tack adhesive for strong holding power
- Meets DIN 40050-9
- Meets ASTM G154 for outdoor durability (simulating 20 years of UV resistance under normal conditions)
- UL969 recognized. File #MH14979, cUL recognized. C22.2 No. 0.15.01 File #MH14979

**PANDUIT®**



### Raised Panel Pre-printed Emergency Stop Labels

- The look of engraved laminated plates with the convenience of printing on demand
- Strong holding power for rough, textured and powder-coated surfaces
- Meets DIN 40050-9
- UL 969 recognized. File #MH14576; cUL recognized C22.2 No. 0.15.01 File #MH14576

**PANDUIT®**

## Wall Spacers



### SuperClean™ Bacteria-resistant Wall Offset Spacers

- The industry's first wall offset spacers that inhibit bacterial growth on the spacer surface
- Made from FDA-compliant nylon resin
- Cylindrical design with no exposed flat surfaces to prevent the collection and retention of liquids or debris
- Promotes a clean environment — 99.9% effective for bacterial reduction on the spacer surface
- Easy to install with no on-site fabrication required

**ABB**



# FEATURED SERVICES

## Custom Panel Services

With custom-designed panels and ongoing vendor management, our panel coordination decreases overhead costs to improve your facility's bottom line.

- Simple procurement process
- Save time and labor
- Uniformity with existing client products

## Remanufacturing and Exchange Services

This proprietary remanufacturing process restores your equipment to like-new or better condition, using genuine Allen-Bradley components provided by Rockwell Automation.

- Extended equipment life
- Enhanced performance
- Comprehensive warranty on entire unit

## Enclosure and Panel Modifications

Don't waste time making holes and cutouts manually. Let us expedite the process of getting your enclosures and back panels modified so you can focus on other responsibilities.

- Precise, clean holes and cuts every time
- Any material, cutout, shape and size
- Order easily by supplying existing design files

## Assessment Services

Gain insights into your industrial asset inventory across facilities and secure your network operations.

- Install base evaluation
- Network assessment
- Lifecycle status

## Thermal Audits

A free thermal audit for control panels can identify problem areas before they become bigger obstacles.

- Internal temperature reading
- Complete enclosure inspection
- Temperature control recommendations

---

Visit our website or contact our team to discover more solutions for better business outcomes.



**WERNER**  
ELECTRIC SUPPLY