

8', 4-LAMP STRIP FIXTURE

CATALOG NUMBER KT-DDSLEDT8-8-4L

DESCRIPTION

8' LED tube ready strip fixture, 4 lamp. (lamps sold separately)

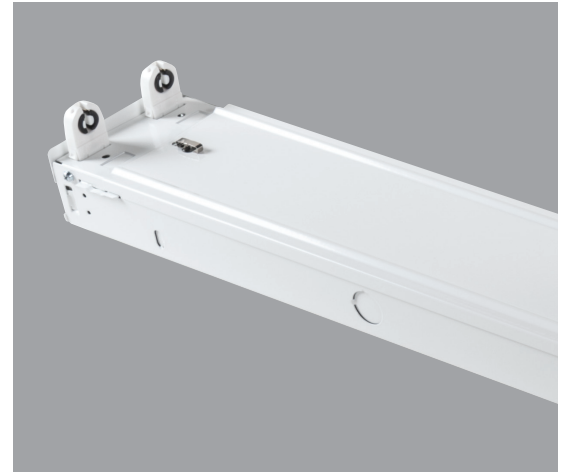
APPLICATION

Used for indoor highbay, lowbay, warehouse and general lighting applications.

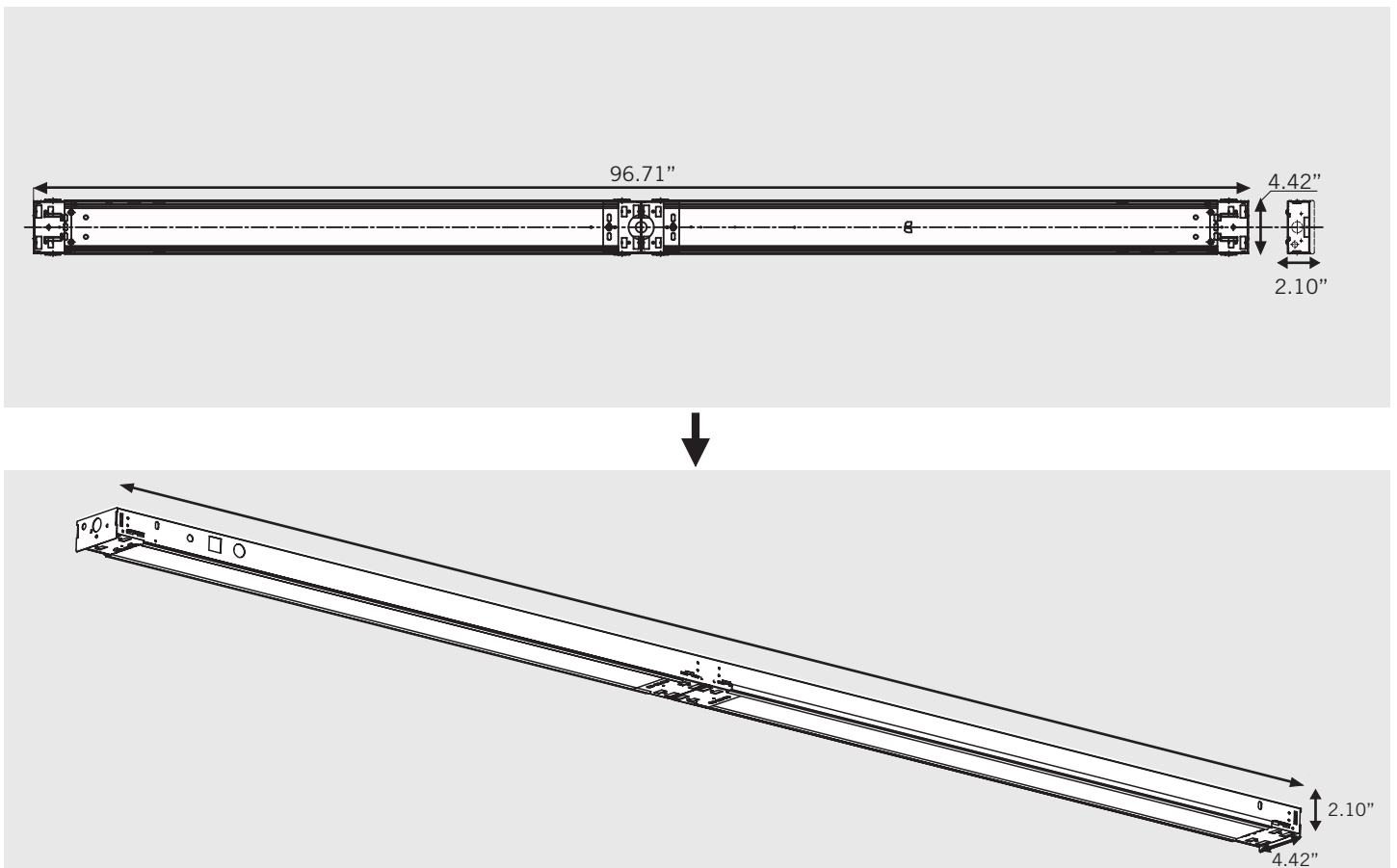
PRODUCT FEATURES

- Designed for use with single ended wiring (type B) LED T8 tubes; includes Pre-Wired Sockets
- Post painted white steel body
- Rated for dry and damp locations
- Designed only for use with Keystone single ended wiring DirectDrive LED lamps: 22W max per lamp

RoHS
Compliant



PRODUCT DIMENSIONS



Note: In order for UL safety certification to be valid, only Keystone lamps may be installed in the fixture as per product label.