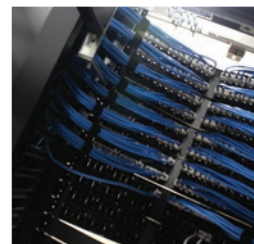
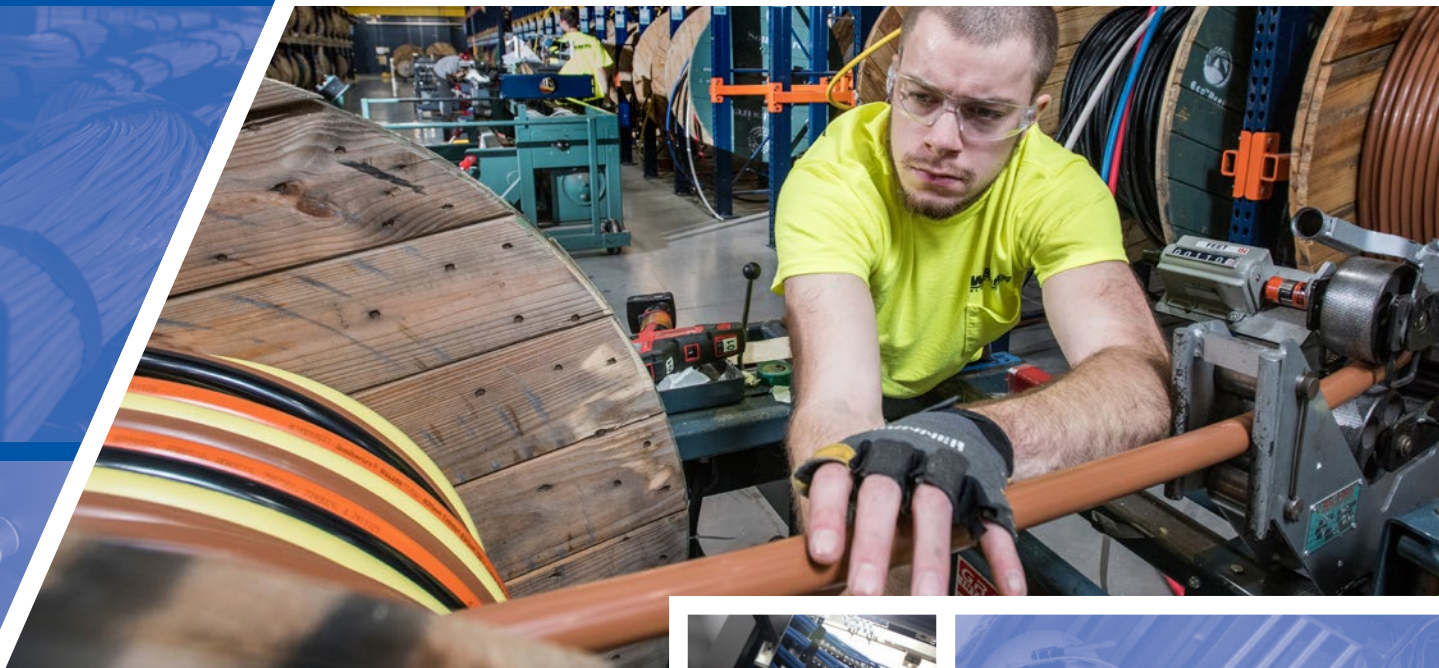


COMMODITY

Stock Guide



INSIDE

- CoilPAK™
- THHN Colored Feeders
- XHHW Colored Feeders
- Industrial Cable
- Cord
- Copper Spools
- Aluminum
- MC Cable
- Conduit
- Paralleling Options
- Southwire SIMpull Solutions®
- Cable Puller Rental



COMMODITY

Stock Guide



Trust Werner Electric Supply
for all your wire needs.

Our experts have years of experience helping people
like you, evaluate your wire and cable needs.

call us today: 866-4-WERNER

Contents

COPPER SPOOLS	3-4	<ul style="list-style-type: none"> • MTW (Stranded and Striped) • TFFN (Stranded) • THHN (Stranded, Solid, and Striped) • XHHW
SOUTHWIRE CoilPAK™	5	
COPPER	6	<ul style="list-style-type: none"> • Romex & UFB • Bare Copper
XHHW COLORED FEEDERS	7	<ul style="list-style-type: none"> • Copper • Aluminum
THHN COLORED FEEDERS	8	<ul style="list-style-type: none"> • Copper
MCAP HOSPITAL GRADE	9	<ul style="list-style-type: none"> • MCAP Stranded Hospital Grade • MCAP Solid Hospital Grade
MCAP STR/SOL	9-10	<ul style="list-style-type: none"> • MCAP Stranded • MCAP Solid
MCAL STR/SOL	11-12	<ul style="list-style-type: none"> • MCAL Stranded • MCAL Solid
MCMN MULTIPLE NEUTRALS	12	
MCPCS SOLID POWER, CONTROL & SIGNAL	13	
DOT CABLE	14	<ul style="list-style-type: none"> • USE - Underground Service Entry • IMSA - Traffic Signal Cable
CORD	15	<ul style="list-style-type: none"> • Standard SOOW, SJOOW, STOW • DLO Cable • Yellow SOOW 105° C • Specialty Cord
VFD CABLE	16	<ul style="list-style-type: none"> • Southwire Flexible VFD Cable • Southwire Reduced Diameter VFD Cable • Southwire Flexible VFD Cable w/Signal Pair • Southwire VFD Termination Kits
INDUSTRIAL CABLE	17-18	<ul style="list-style-type: none"> • Instrumental Cables • High Temp • Thermostat Wire • LAPP 190 Series • LAPP Flex Tray Series • Non-shielded VNTC • Belden Multi Cond Cables • Shielded VNTC
ALUMINUM	19	<ul style="list-style-type: none"> • Service Entrance Style U • Underground Service Entrance • A8000 Service Triples Underground Residential Distribution • Service Entrance Style R • Aluminum Conductor, Steel Reinforced • Feeder MC Cable Aluminum
CONDUIT	20	<ul style="list-style-type: none"> • Conduit • Liquidtight Flex Conduit UL • Flex Aluminum Conduit • Colored EMT • Flex Steel Conduit • PVC
SIMpull® CABLE-IN-CONDUIT	21	
VALUE ADDED SERVICES	22	<ul style="list-style-type: none"> • Custom Wire Striping • SPEEDPULL
PARALLELING OPTIONS	23	
SOUTHWIRE SIMpull SOLUTIONS®	24-25	
CABLE PULLER RENTAL	26	



Copper Spools

- MTW (Stranded and Striped)
- THHN (Stranded, Solid and Striped)
- TFFN (Stranded)
- XHHW

MTW - MACHINE TOOL WIRE (STRANDED) ((ALAN))									
Wire Size	Brown	Orange	Yellow	Gray	Red	Blue	White	Green	Black
18	X	X	X	X	X(+)	X(+)	X(+)	X	X
16	X	X	X(+)	X(+)	X(+)	X(+)	X(+)	X(+)	X
14	X	X	X	X	X(+)	X(+)	X(+)	X(+)	X(+)
12	X	X	X	X	X	X	X	X(+)	X(+)
10	Non Stock	Non Stock	Non Stock	Non Stock	X	X	X	X	X
8	Non Stock	Non Stock	Non Stock	Non Stock	X	Non Stock	Non Stock	X	X
6	Non Stock	Non Stock	Non Stock	Non Stock	Non Stock	Non Stock	Non Stock	X	X

MTW - MACHINE TOOL WIRE (STRIPED)			
Wire Size	Green w/ Yellow	Blue w/ White	White w/ Blue
18	X	X	X(+)
16	X	X(+)	X(+)
14	X(+)	X	X
12	X	Non Stock	X

TFFN - THERMOPLASTIC FLEXIBLE FIXTURE-WIRE NYLON-JACKETED, 500' STRANDED														
Wire Size	Brown	Orange	Yellow	Gray	Red	Blue	White	Green	Black	Purple	Pink	Blue w/White	White w/Blue	Green w/Yellow
18	X	X	X	X	X(+)	X(+)	X(+)	X	X(+)	X	X	X	X(+)	Non-Stock
16	X(+)	X	X	X	X(+)	X(+)	X(+)	X(+)	X(+)	X(+)	X(+)	X	X(+)	X(+)

THHN - (STRANDED) THERMOPLASTIC HIGH HEAT-RESISTANT NYLON-COATED											
Wire Size	Brown	Orange	Yellow	Gray	Red	Blue	White	Green	Black	Purple	Pink
14	X(+)(#)	X(+)(#)	X(+)(#)	X(+)	X(+)	X(+)	X(+)	X(+)(#)	X(+)	X(+)	X(+)
12	X(+)(#)	X(+)(#)	X(+)(#)	X(+)(#)	X(+)(#)	X(+)(#)	X(+)(#)	X(+)(#)	X(+)(#)	X(+)	X(+)
10	X(+)(#)	X(+)(#)	X(+)(#)	X(+)(#)	X(+)(#)	X(+)(#)	X(+)(#)	X(+)(#)	X(+)(#)	X	X
8	X(#)	X(#)	X(#)	(#)	X(#)	X(#)	X(#)	X(#)	X(#)	Non Stock	Non Stock
6	X	X	X(#)	X(#)	X(#)	X(#)	X(#)	X(#)	X(#)	Non Stock	Non Stock

X = 500' spools, (#) = 1000' spools, (+) = 2500' spools

Copper Spools

THHN – (SOLID) THERMOPLASTIC HIGH HEAT-RESISTANT NYLON-COATED											
Wire Size	Brown	Orange	Yellow	Gray	Red	Blue	White	Green	Black	Purple	Pink
14	X	X(+)	X	X	X(+)	X	X	X	X	X(+)	X
12	X(+)	X	X	X	X(+)	X(+)	X(+)(#)	X(+)	X(+)	X(+)	X(+)
10	X	Non Stock	X	Non Stock	X	X	X	X	X	Non Stock	Non Stock

THHN – (STRIPED) THERMOPLASTIC HIGH HEAT-RESISTANT NYLON-COATED								
Wire Size	Gray w/ Brown	Gray w/ Orange	Gray w/ Yellow	Green w/ Yellow	White w/ Red	White w/ Blue	White w/ Black	Blue w/ White
14	Non Stock	Non Stock	Non Stock	X	Non Stock	X(+)	Non Stock	(+)
12	X(+)	X(+)	X(+)	X(+)	X(+)	X(+)	X(+)	Non Stock
10	X(+)	X(+)	X(+)	X	X(+)	X(+)	X(+)	Non Stock
8	Non Stock	Non Stock	Non Stock	(#)	Non Stock	Non Stock	Non Stock	Non Stock

XHHW – XLPE HIGH HEAT-RESISTANT WATER-RESISTANT									
Wire Size	Brown	Orange	Yellow	Gray	Red	Blue	White	Green	Black
14	X(+)	X(+)	X(+)	X(+)	X(+)	X(+)	X(+)	X(+)	X(+)
12	X(+)	X(+)	X(+)	X(+)	X(+)	X(+)	X(+)	X(+)	X(+)
10	X(+)	X(+)	X(+)	X(+)	X(+)	X(+)	X(+)	X(+)	X(+)
8	(#)(+)	(#)(+)	(#)(+)	X	X(+)	X(+)	X	(#)(+)	X(+)

X = 500' spools, (#) = 1000' spools, (+) = 2500' spools



Trust Werner Electric
for all your wire needs.

CoilPAK™

Revolutionize the way you install circuit wire.

Tangle Free

- NoLube® SIMpull™ THHN
- Effortless, inertia-free integral payoff system
- Ergonomic portable package, less than 50 lbs.
- Rugged and stackable, self-contained system protects wire

- GRAB it
- CART it
- LIFT it
- STACK it
- PULL it
- PAIR it
- DON'T SWEAT it



COILPAK STR THHN (SOLID COLOR)											
WIRE SIZE	SPOOL SIZE	BLACK	BLUE	BROWN	GRAY	GREEN	ORANGE	RED	WHITE	YELLOW	PURPLE
14	2500'	.3979676	.4029750	.3979686	Non-Stock	Non-Stock	.3979682	.3979678	.3979680	.3979685	Non-Stock
12	2000'	.3979657	.3979661	.3979670	.3979679	.3979667	.3979673	.3979666	.3979669	.3979675	.3979683
10	1250'	.3979712	.3979713	.3979720	.3979738	.3979716	.3979729	.3979719	.3979715	.3979732	Non-Stock

COILPAK STR THHN (STRIPED COLOR)							
WIRE SIZE	SPOOL SIZE	GRAY W/BROWN	GRAY W/ORANGE	GRAY W/YELLOW	WHITE W/BLACK	WHITE W/BLUE	WHITE W/RED
12	2000'	.3979718	.3979722	.3979724	.3979714	.3979717	.3979718
10	1250'	.3979755	.3979756	.3979758	.3979751	.3979752	.3979753

COILPAK STR THHN (STRIPED COLOR)							
WIRE SIZE	SPOOL SIZE	BROWN - GRAY W/BROWN	ORANGE - GRAY W/ORANGE	YELLOW - GRAY W/YELLOW	BLACK - WHITE W/BLACK	BLUE - WHITE W/BLUE	RED - WHITE W/RED
12	2000'	.4181812	.4181818	.4181820	.4054760	.4051120	.4054761



Copper

- Romex & UFB
- Bare Copper



ROMEX & UFB					
Wire Size	125' coil	250' coil	500' spool	1000' reel	CUT
NMB 14/2 CU WG		.52602	.3804111	.52603	
NMB 14/3 CU WG		.52605	.3804112	.52606	
NMB 12/2 CU WG		.52597	.3804113	.52598	
NMB 12/3 CU WG		.52600		.52601	
NMB 10/2 CU WG		.52592		.52592	.3814903
NMB 10/3 CU WG		.52595		.52596	.3797649
NMB 8/2 CU WG	.1302563				
NMB 8/3 CU WG	.52619		.52617		.2070290
NMB 6/2 CU WG	.52611				
NMB 6/3 CU WG	.52613				.1656485
NMB 14-2-2 ADDITIONAL CIRCUIT		.1594558		.4031325	
NMB 12-2-2 ADDITIONAL CIRCUIT		.1594557		.4031326	
UF-B 10/2 CU WG		.66621		.66635	
UF-B 10/3 CU WG		.66622		.66636	
UF-B 12/2 CU WG		.66624		.1326521	
UF-B 12/3 CU WG		.66625		.2291930	
UF-B 14/2 CU WG		.66626		.66639	
UF-B 14/3 CU WG		.66628		.66640	
UF-B 6/3 CU WG					.1853942
UF-B 8/3 CU WG					.1679685

BARE COPPER				
Wire Size	200' reel	315' reel	500' reel	CUT
BARE SD 8 SOLID			.16791	.165209
BARE SD 6 SOLID				.2001995
BARE SD 4 SOLID				.3861751
BARE SD 8 7STR CU			.16792	
BARE SD 6 7STR CU		.16789		.1652056
BARE SD 4 7STR CU	.16795			.1412242
BARE SD 2 7STR CU				.2001998
BARE SD 4/0 19STR CU				.1325273
BARE SD 3/0 19STR CU				.1413051
BARE SD 2/0 19STR CU				.2411964
BARE 2 TINNED SOLID			.16778	

XHHW Colored Feeders

- XLPE High Heat-resistant Water-resistant
- All feeder wire has Southwire SIMpull™ Technology.

XHHW COLORED FEEDERS – COPPER		
WIRE SIZE	Green	Black
8	.3801824	.69135
6	.3844663	.3860973
4	.3801822	.3777092
3	.3940796	.3780043
2	.3789791	.3777107
1	.3917460	.3900935
1/0	.3917462	.3783946
2/0	.3928318	.3900938
3/0	.3917498	.3777112
4/0	.4006067	.3768929
250	.4012470	.3772781
300	Non-Stock	Non-Stock
350	.4012471	.3771321
400	.3874418	.3779895
500	Non-Stock	.1676176
600	Non-Stock	.3916224

SOUTHWIRE MEDIUM VOLTAGE	
Wire Size	Part Number
SOUTHWIRE 500 KCMIL 15KV CU 220 NLEPR 133% SIMPULL PVC MV-105 CUT 95604599	3916445
SOUTHWIRE 350 KCMIL 15KV CU 220 NLEPR 133% SIMPULL PVC MV-105 CUT 95603799	3916443
SOUTHWIRE 4/0 15KV 220 NLEPR 133% SIMPULL PVC MV-105 CUT 95601199	3916442
SOUTHWIRE 350 KCMIL CU 115 NLEPR SIMPULL PVC 5KV 133% 8KV 100% MV-105 CUT 95504799	3916456
SOUTHWIRE 1/0 CU 320 NLEPR SIM-PVC JKT 25KV CT MEDIUM VOLTAGE CUT 64461499	4204982

XHHW COLORED FEEDERS – ALUMINUM									
WIRE SIZE	Brown	Orange	Yellow	Gray	Red	Blue	White	Green	Black
6	.4147136	.4147144	.4147145	.4147146	.414132	.4147133	.414135	.3985753	.2440021
4	.4147119	.4147122	.4147125	.4147126	.4147116	.4147117	.4147118	.3985756	.69119
2	.4147103	.4147104	.4147105	.4147106	.4147077	.4147094	.4147102	.3985760	.69106
1	.4147062	.4147064	.4147065	.4147073	.4147049	.4147050	.4147053	.3985764	.1324119
1/0	.3985812	.3985812	.3985865	.3985878	.4092509	.4092510	.4092511	.3985766	.1573314
2/0	.3985813	.3985831	.3985866	.3985880	.4092512	.4092513	.4092514	.3985767	.69100
3/0	.3985814	.3985836	.3985867	.3985881	.3985777	.3985784	.3985804	.3985771	.69109
4/0	.3985816	.3985838	.3985868	.3985882	.3985778	.3985786	.3985805	.3985772	.1326666
250	.3985817	.3985848	.3985869	.3985883	.3985779	.3985787	.3985807	.3985773	.1324123
300	.3985818	.3985854	.3985871	.3985884	.3985780	.3985789	.3985810	.3985774	.2071399
350	.3985820	.3985856	.3985872	.3985887	.3985783	.3985791	.3985811	.3985776	.1573226
400	.3985821	.3985857	.3985873	.3985857	.4092535	.4092537	.4092538	.4092539	.1324126
500	.3985823	.3985858	.3985875	.3985889	.3997579	.3997580	.3997581	.4092519	.1324127
600	.3985826	.3985859	.3985876	.3985890	.4151579	.4151580	.4151581	.4049571	.2270452
750	.3985828	.3985860	.3985877	.3985892	.4081406	.4081414	.4081412	.4092521	.1324129

THHN Colored Feeders

- Thermoplastic High Heat-resistant Nylon-coated (Stranded)
- All feeder wire has Southwire SIMpull™ Technology.

THHN COLORED FEEDERS – COPPER									
WIRE SIZE	Brown	Orange	Yellow	Gray	Red	Blue	White	Green	Black
8	.65908	.65919	.65930	.65916	.65923	.65905	.65927	.65912	.65901
6	.1618068	.1618069	.65895	.2584525	.65889	.65875	.65892	.65881	.65872
4	.2584527	.2584529	.2491311	.2584531	.65850	.65845	.65852	.65848	.65843
3	.1670872	.1670873	.1670874	.2584516	.2387760	.65818	.65822	.1302914	.65818
2	.2584538	.2584539	.2584542	.2584545	.2584547	.2584548	.65800	.65798	.65794
1	.3758667	.3758678	.3758679	.3771553	.3779866	.3779871	.3779873	.1325116	.65776
1/0	.1303329	.1303330	.1303331	.1397924	.2018285	.2018286	.2018287	.65616	.65613
2/0	.1363249	.1363251	.1363250	.2584549	.2584550	.2584551	.2584552	.65782	.65780
3/0	.1326511	.1326512	.1326513	.1326514	.1324461	.1324462	.1326510	.65805	.65804
4/0	.65827	.1326507	.65832	.1304785	.1326525	.1326508	.65831	.1302915	.65826
250	.65786	.65789	.65790	.65788	.1324458	.1324459	.1324460	.65787	.65785
300	.1326515	.1326516	.1326517	.3833981	.3775397	.3775399	.3775398	.3761398	.65808
350	.1304781	.1304783	.1304784	.2584534	.65813	.65812	.65814	.1304782	.65811
400	.65835	.65836	.65839	.2004378	.3833274	.3833275	.3833276	.2585952	.65833
500	.1326499	.1326500	.1326501	.1326502	.65858	.65856	.1326498	Non-Stock	.65855
600	.1304789	.1412197	.1435579	.1304790	.65865	.65862	.1302918	Non-Stock	.65861

Don't just pull. Pull ahead with the SIMpull Head™ pulling device!

Increase productivity, lower your costs, and win more jobs by combining an innovative Werner-installed pulling head with Southwire's patented NoLube® SIMpull™ THHN cable.

- Available in sizes 1 AWG - 750 kcmil
- Paralleled and cut-to-length reels
- Low profile head
- Color Conductors - available in both copper and aluminum
- Can also be installed on medium voltage cable



In stock and installed by Werner Electric!



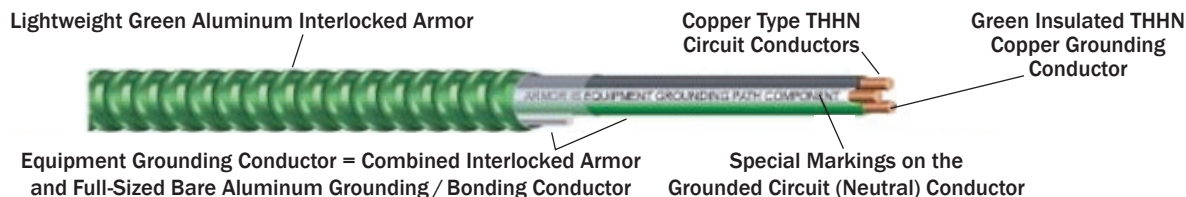
MCAP Hospital Grade

- Lightweight green aluminum interlocked armor
- 600 Volt copper thhn insulated conductors
- Green insulated ground conductor
- Full-sized aluminum equipment
- Grounding/bonding conductor
- Sizes 12 AWG through 10 AWG

MCAP STRANDED HOSPITAL GRADE			
Werner #	Size	Conductor Color	Put Up
.2562544	12/2	Black/White	250'
.2594099	12/2	Black/White	1000'
.4050018	12/2	Blue/White	250'
.4050017	12/2	Red/White	250'
.3947413	12/2	Brown/Gray	250'
.4008003	12/3	Black/White/Red	250'
.4030651	12/3	Black/White/Red	1000'
.3946834	10/2	Black/White	250'

MCAP SOLID HOSPITAL GRADE			
Werner #	Size	Conductor Color	Put Up
.2532265	12/2	Black/White	250'
.3863518	12/2	Black/White	1000'
.3992814	12/2	Red/White	1000'
.3992815	12/2	Blue/White	1000'
.4055651	12/2	Brown/Gray	250'
.4035145	12/2	Brown/Gray	1000'
.4032997	12/2	Orange/Gray	1000'
.4035149	12/2	Yellow/Gray	1000'
.4055656	12/3	Black/White/Red	250'
.3863519	12/3	Black/White/Red	1000'
.4042826	12/3	Brown/Orange/Gray	250'
.3956440	12/3	Brown/Orange/Gray	1000'
.4055657	12/4	Black/White/Red/Blue	250'
.4030062	12/4	Black/White/Red/Blue	1000'
.4055657	12/4	Brown/Orange/Yellow/Gray	250'
.4035153	12/4	Brown/Orange/Yellow/Gray	1000'
.3831876	10/2	Black/White	1000'
.4055662	10/3	Black/White/Red	250'
.4055664	10/3	Black/White/Red	1000'
.3840601	10/4	Black/White/Red/Blue	250'
.3840664	10/4	Black/White/Red/Blue	1000'

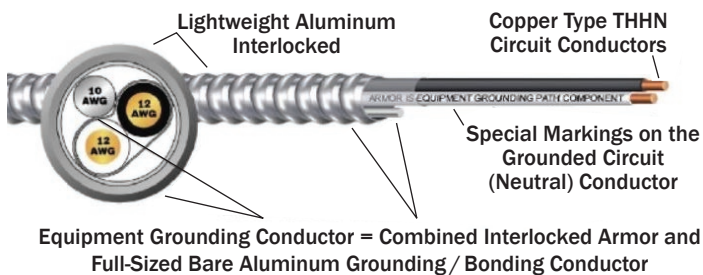
*Red highlighted items are non-stock.



MCAP STR/SOL

- Use wherever standard AC or MC cable is permitted
- Branch circuit wiring in commercial, industrial, institutional, and multi-residential buildings

MCAP STRANDED			
Werner #	Size	Conductor Color	Put Up
.2562540	12/2	Black/White	250'
.4007999	12/2	Black/White	1000'
.3900204	12/2	Brown/Gray	250'
.3939619	12/2	Brown/Gray	1000'
.3876419	12/2	Orange/Gray	250'
.3781455	12/2	Orange/Gray	1000'
.4055784	12/2	Yellow/Gray	250'
.3781459	12/2	Yellow/Gray	1000'
.2572822	12/3	Black/White/Red	250'
.3939618	12/3	Black/White/Red	1000'
.3781460	12/3	Brown/Orange/Gray	250'
.2572814	12/4	Black/White/Red/Blue	250'
.4055785	12/4	Brown/Orange/Yellow/Gray	250'
.2572836	10/2	Black/White	250'
.4055716	10/2	Black/White	1000'
.2572838	10/3	Black/White/Red	250'
.4055719	10/3	Black/White/Red	1000'
.3958709	10/4	Black/White/Red/Blue	1000'



MCAP SOLID			
Werner #	Size	Conductor Color	Put Up
.2532249	14/2	Black/White	250'
.2572905	14/2	Black/White	1000'
.2532255	14/3	Black/White/Red	250'
.4055672	14/3	Black/White/Red	1000'
.2532257	12/2	Black/White	250'
.2532259	12/2	Black/White	1000'
.3978801	12/2	Blue/White	250'
.3842862	12/2	Blue/White	1000'
.3978800	12/2	Red/White	250'
.3842863	12/2	Red/White	1000'
.2613358	12/2	Brown/Gray	250'
.3970732	12/2	Brown/Gray	1000'
.4055723	12/2	Orange/Gray	250'
.3970734	12/2	Orange/Gray	1000'
.4055727	12/2	Yellow/Gray	250'
.3970736	12/2	Yellow/Gray	1000'
.2532261	12/3	Black/White/Red	250'
.2532262	12/3	Black/White/Red	1000'
.3781462	12/3	Brown/Orange/Gray	250'
.3902761	12/3	Brown/Orange/Gray	1000'
.3904575	12/3	Brown/Yellow/Gray	250'
.4055795	12/3	Brown/Yellow/Gray	1000'
.4055674	12/4	Black/White/Red/Blue	250'
.3958710	12/4	Black/White/Red/Blue	1000'
.4055796	12/4	Brown/Orange/Yellow/Gray	250'
.4004050	12/4	Brown/Orange/Yellow/Gray	1000'
.2532263	10/2	Black/White	250'
.3764989	10/2	Black/White	1000'
.3781465	10/2	Brown/Gray	250'
.2532264	10/3	Black/White/Red	250'
.3923268	10/3	Black/White/Red	1000'
.3781468	10/3	Brown/Orange/Gray	250'
.4035594	10/3	Brown/Orange/Gray	1000'
.3954452	10/4	Black/White/Red/Blue	250'
.4055803	10/4	Brown/Orange/Yellow/Gray	1000'

*Red highlighted items are non-stock.

MCAL STR/SOL

- Branch, feeder, and service power distribution in commercial, industrial, institutional, and multi-residential buildings
- Power, lighting, control, and signal circuits
- Fished or embedded in plaster

MCAL SOLID			
Werner #	Size	Conductor Color	Put Up
.48425	14/2	Black/White	250'
.48426	14/2	Black/White	1000'
.48427	14/3	Black/White/Red	250'
.4054430	14/3	Black/White/Red	1000'
.48412	12/2	Black/White	250'
.48413	12/2	Black/White	1000'
.3992180	12/2	Black/White Barrel	2500'
.3986147	12/2	Red/White	250'
.3986149	12/2	Red/White	1000'
.3986150	12/2	Blue/White	250'
.3986148	12/2	Blue/White	1000'
.3950773	12/2	Brown/Gray	250'
.3953333	12/2	Brown/Gray	1000'
.3950774	12/2	Orange/Gray	250'
.3953334	12/2	Orange/Gray	1000'
.3978802	12/2	Yellow/Gray	250'
.3993902	12/2	Yellow/Gray	1000'
.48417	12/3	Black/White/Red	250'
.48418	12/3	Black/White/Red	1000'
.3992187	12/3	Black/White/Red Barrel	2500'
.3950778	12/3	Brown/Orange/Gray	250'
.3950779	12/3	Brown/Orange/Gray	1000'
.4055821	12/3	Brown/Yellow/Gray	250'

MCAL SOLID (CONTINUED)			
Werner #	Size	Conductor Color	Put Up
.4055822	12/3	Brown/Yellow/Gray	1000'
.4055823	12/3	Orange/Yellow/Gray	250'
.4055824	12/3	Orange/Yellow/Gray	1000'
.2542759	12/4	Black/White/Red/Blue	250'
.3969191	12/4	Black/White/Red/Blue	1000'
.3950780	12/4	Brown/Orange/Yellow/Gray	250'
.3948455	12/4	Brown/Orange/Yellow/Gray	1000'
.48407	10/2	Black/White	250'
.3969890	10/2	Black/White	1000'
.4055833	10/2	Brown/Gray	250'
.4055836	10/2	Brown/Gray	1000'
.4055825	10/2	Orange/Gray	250'
.4055827	10/2	Orange/Gray	1000'
.4055830	10/2	Yellow/Gray	250'
.4055832	10/2	Yellow/Gray	1000'
.48409	10/3	Black/White/Red	250'
.4054431	10/3	Black/White/Red	1000'
.4055840	10/3	Brown/Orange/Gray	250'
.4055841	10/3	Brown/Orange/Gray	1000'
.4055842	10/3	Brown/Yellow/Gray	250'
.3941257	10/4	Brown/Orange/Yellow/Gray	250'
.455843	10/4	Brown/Orange/Yellow/Gray	1000'

250' Coils, 1000' Reels, 2,000'/2,500' Barrels

*Red highlighted items are non-stock.



MCMN Multiple Neutrals



- Lightweight aluminum interlocked armor
- 600 volts
- Copper power conductors
- THHN/THWN insulated singles
- Multiple circuits
- Green insulated grounding conductor
- Sizes 12 AWG and 10 AWG
- Rated VW-1

MCAL STRANDED			
Werner #	Size	Conductor Color	Put Up
.48415	12/2	Black/White	250'
.1450641	12/2	Black/White	1000'
.3992193	12/2	Black/White	2000'
.3943534	12/2	Brown/Gray	250'
.3941242	12/2	Brown/Gray	1000'
.3950772	12/2	Orange/Gray	250'
.3941317	12/2	Orange/Gray	1000'
.3990144	12/2	Yellow/Gray	250'
.4055816	12/2	Yellow/Gray	1000'
.48420	12/3	Black/White/Red	250'
.1503371	12/3	Black/White/Red	1000'
.4003675	12/3	Black/White/Red Barrel	1500'
.4055816	12/3	Brown/Yellow/Gray	250'
.3941246	12/3	Brown/Orange/Gray	250'
.3887393	12/3	Brown/Orange/Gray	1000'
.48424	12/4	Black/White/Red/Blue	250'
.3957064	12/4	Black/White/Red/Blue	1000'
.3941247	12/4	Brown/Orange/Yellow/Gray	250'
.3923537	12/4	Brown/Orange/Yellow/Gray	1000'
.48408	10/2	Black/White	250'
.2573034	10/2	Black/White	1000'
.4055817	10/2	Brown/Gray	1000'
.3941437	10/3	Black/White/Red	250'
.4054432	10/3	Black/White/Red	1000'
.3941256	10/3	Brown/Orange/Gray	250'
.3945094	10/4	Brown/Orange/Yellow/Gray	250'

MCMN SOLID MULTIPLE NEUTRALS				
Werner #	Size	Conductor Color	Neutral Color	Put Up
.3900483	12/2 x 2	Black/Red	White/Black Stripe White/Red Stripe	250'
.4035820	12/2 x 2	Black/Red	White/Black Stripe White/Red Stripe	1000'
.4058476	12/3 x 2	Black/Red/Blue	White/Black Stripe White/Red Stripe White/Blue Stripe	250'
.4035822	12/3 x 2	Black/Red/Blue	White/Black Stripe White/Red Stripe White/Blue Stripe	1000'
.4058536	10/2 x 2	Black/Red	White/Black Stripe White/Red Stripe	1000'
.4035825	10/3 x 2	Black/Red/Blue	White/Black Stripe White/Red Stripe White/Blue Stripe	1000'

*Red highlighted items are non-stock.

MCPCS Solid Power, Control & Signal

(LED & Fluorescent)

- Lightweight aluminum interlocked armor
- 600 volts
- Copper power & control conductors
- THHN/THWN & TFN insulated singles
- Green insulated grounding conductor
- Power: 12 AWG & 10 AWG
- Control: 16 AWG
- Rated VW-1
- Rated 90°C dry locations

MCPCS SOLID				
Werner #	Size	Conductor Color	Neutral Color	Put Up
.4074601	12/2 16/2	Black/White	Control Signal Purple/Gray	250'
.4057886	12/2 16/2	Brown/Gray	Control Signal Purple/Gray	250'
.4057894	12/2 16/2	Brown/Gray	Control Signal Purple/Gray	1000'
.4057907	12/2 16/2	Orange/Gray	Control Signal Purple/Gray	1000'
.4057908	12/2 16/2	Yellow/Gray	Control Signal Purple/Gray	250'
.4057910	12/2 16/2	Yellow/Gray	Control Signal Purple/Gray	1000'
.4057914	12/3 16/2	Black/Red/White	Control Signal Purple/Gray	250'
.4057919	12/3 16/2	Black/Red/White	Control Signal Purple/Gray	1000'

*Red highlighted items are non-stock.

MCPCS STRANDED				
Werner #	Size	Conductor Color	Neutral Color	Put Up
.4137275	12/2 16/2	Brown/Gray	Control Signal Purple/Gray	250'
.4137279	12/2 16/2	Orange/Gray	Control Signal Purple/Gray	250'
.4137285	12/2 16/2	Yellow/Gray	Control Signal Purple/Gray	250'



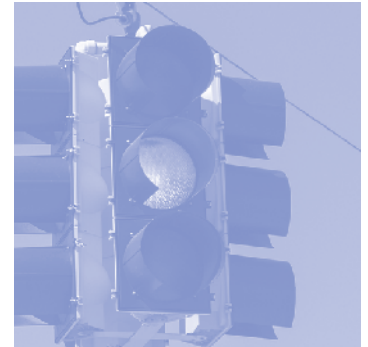
DOT Cable

- Underground Service Entry (USE) Cable
- IMSA Traffic Signal Cable

USE XLP - COPPER					
Wire Size	Red	Blue	White	Green	Black
12	.4018231	.4021580	.211200	.1450632	.4021579
10	.3915668	.4021581	.4019803	.4021582	.4015228
8	.4129216	Non-Stock	.4129177	.4129218	.4129161
6	.4132710	Non-Stock	.4132709	.4132711	.4132708
4	Non-Stock	Non-Stock	Non-Stock	Non-Stock	.2104773

IMSA TRAFFIC SIGNAL CABLE	
Wire Size	Part Number
IMSA 14/3 20-1 TRAFFIC SIGNAL	.4225039
IMSA 14/5 20-1 TRAFFIC SIGNAL	.4215505
IMSA 14/7 20-1 TRAFFIC SIGNAL	.4238809
IMSA 14/15 20-1 TRAFFIC SIGNAL	.4225040
IMSA 14/21 20-1 TRAFFIC SIGNAL	.4225041
IMSA 14/25 20-1 TRAFFIC SIGNAL	.4225042

SOUTHWIRE CABLE IN CONDUIT, HDPE BLACK CONDUIT		
Wire Size	Conduit Size	Part Number
10/4 THHN BLACK/RED/WHITE/GREEN	3/4" HDPE	.4143031
10/4 THHN BROWN/ORANGE/GRAY/GREEN	3/4" HDPE	.4143032
8/7c THHN BR/Gy w-BR/OR/GY w-OR/YE/Gy w-YE/GR	1" HDPE	.4143035
8/3c w #10g THHN BLACK/RED/WHITE #10GREEN GROUND	1" HDPE	.4143039
6/3c w #8g THHN BLACK/WHITE/RED #8 GREEN GROUND	1" HDPE	.4143121
6/2c w #8g THHN BLACK/RED #8 GREEN GROUND	1" HDPE	.4143125
6/3c w #8g THHN BROWN/ORANGE/GRAY #8 GREEN GROUND	1" HDPE	.4143126
1" HDPE EMPTY BLACK CONDUIT CUT 63:11:67:02 (WERNER CUT)	1"HDPE	.4143129
3/4" HDPE EMPTY DUCT W/PULLTAPE 2500' 63:20:29:01	3/4" HDPE	.4176612



Cord



- Standard SOOW, SJOOW, STOW
- DLO cable
- Yellow SOOW 105 °C
- Specialty cord

STANDARD SOOW, SJOOW, STOW			
Wire Size	250' Coil	1000' Reel	CUT
SOOW 18/3	.4222265		.4241309
SOOW 16/2			.4222237
SOOW 16/3	.4222246		.4222243
SOOW 16/4	.4221873		.4228874
SOOW 16/6			.4228875
SOOW 16/8			.4228858
SOOW 16/10			.4228859
SOOW 16/12			.4222282
SOOW 16/16			.4222242
SOOW 14/3	.4222245	.4221874	.4222249
SOOW 14/4	.4222248		.4222236
SOOW 12/3	.4222235		.4222239
SOOW 12/4			.4228854
SOOW 10/3	.4222241		.4227480
SOOW 10/4	.4179168		.4222227
SOOW 8/3 Non UL			.4222234
SOOW 8/4 Non UL			.4219662
SOOW 8/4 UL			.4222233
SOOW 6/3 Non UL			.4222232
SOOW 6/4 Non UL			.4222229
SOOW 4/4 Non UL			.4222228
SOOW 2/4 Non UL			.4223235
SOOW 2/4 UL			.4223248
SJOOW 18/3	.4228853		.3960655
SJOOW 16/3	.4221889		.4228825
SJOOW 14/3	.4221890		
SJOOW 14/4	.4222256		.4222226
SJOOW 12/3	.4222225		

DLO CABLE	
Wire Size	CUT
DLO 2 TINNED	.3966983
DLO 2/0 TINNED	.3961842
DLO 3/0 TINNED	.3961844
DLO 4/0 TINNED	.3961848

YELLOW SOOW 105 °C		
Wire Size	250' Coil	CUT
SOOW 16/3		.4023633
SOOW 16/4	.4235222	
SOOW 14/3	.4235223	
SOOW 14/4		.3797178
SOOW 12/3		.4242600
SOOW 12/4		.4235224
SOOW 10/4		.4242601

SPECIALTY CORD	
Wire Size	Part Number
SW 02549USA1 12/3 100'SJTW MADEUSA	.4031413
SW 041128802 12/3 2' STW TRI-SOURCE EXTENSI	.4031414
SW 024078804 14/3 25' SJTW EXTENSION CORD R	.4031415
SW 024088804 14/3 50' SJTW EXTENSION CORD R	.4031418
SW 024098804 14/3 100' SJTW EXTENSION CORD	.4031419
SW 02548USA1 12/3 50' SJTW MADEUSA	.4031412
SW 025878802 12/3 25' SJTW EXTENSION CORD W	.4031950
SW 09706SW8808 16/3 6' SJTW DISPOSAL CORD	.3928211
SW 09709SW8808 16/3 9' SJTW DISPOSAL CORD	.4023372
SW 091268809 10/3 SRDT 30A DRYER 6' FLAT CO	.4031972
SW 09719SW8808 14/3 9' SJTW DISPOSAL CORD	.4023377
SW 9156SW8808 10/4 SRDT 30A DRYER 6' ROUND C	.4033982
SW 097038808 16/3 3' SJTW DISPOSAL CORD	.3928211

VFD Cable

- Will not degrade under severe electrical load allowing longer cable runs
- Performs under voltage irregularities—harmonics, corona discharges, and power distortions
- Virtually eliminates premature cable failure and machine downtime
- Full sized insulated ground
- Full sized TC drain wire



SOUTHWIRE FLEXIBLE VFD CABLE	
Wire Size	Part Number
SOUTHWIRE 58534299 CUT 16/4 SHIELDED VFD CABLE XLPE TC-ER 1000V (WERNER CUT)	.4204976
SOUTHWIRE 58534399 CUT 14/4 SHIELDED VFD CABLE XLPE TC-ER 1000V (WERNER CUT)	.4204977
SOUTHWIRE 58534499 CUT 12/4 SHIELDED VFD CABLE XLPE TC-ER 1000V (WERNER CUT)	.4204979
SOUTHWIRE 58541699 CUT 10/4 SHIELDED VFD CABLE XLPE TC-ER 1000V (WERNER CUT)	.4206108
SOUTHWIRE 64345199 CUT 8/4 SHIELDED VFD CABLE XLPE TC-ER 1000V (WERNER CUT)	.4216915
SOUTHWIRE 64345999 CUT 6/4C FLEXIBLE SHIELDED VFD CABLE RHH/RHW-2 TC-ER 1000V (WERNER CUT)	.4206109
SOUTHWIRE 64346799 CUT 4/4 FLEXIBLE SHIELDED VFD CABLE RHH/RHW-2 TC-ER 1000V (WERNER CUT)	.4213157
SOUTHWIRE 64347499 2/4C FLEXIBLE SHIELDED VFD CABLE RHH/RHW-2 TC-ER 1000V	.4259596

SOUTHWIRE REDUCED DIAMETER VFD CABLE	
Wire Size	Part Number
SOUTHWIRE 64582499 CUT 16/4 REDUCED DIAMETER SHIELDED VFD CABLE XHHW-2 TC-ER 1000V (WERNER CUT)	.4252955
SOUTHWIRE 64582599 CUT 14/4 REDUCED DIAMETER SHIELDED VFD CABLE XHHW-2 TC-ER 1000V (WERNER CUT)	.4252956
SOUTHWIRE 64582699 CUT 12/4 REDUCED DIAMETER SHIELDED VFD CABLE XHHW-2 TC-ER 1000V (VENDOR CUT)	.4259513
SOUTHWIRE 64582799 CUT 10/4 REDUCED DIAMETER SHIELDED VFD CABLE XHHW-2 TC-ER 1000V	.4259523
SOUTHWIRE 67729999 8/4 REDUCED DIAMETER SHIELDED VFD CABLE XHHW-2 TC-ER 1000V	.4259524

SOUTHWIRE FLEXIBLE VFD CABLE W/ SIGNAL PAIR	
Wire Size	Part Number
SOUTHWIRE 64624199 16/4 + 16/1PR SHIELDED VFD CABLE RHH-RHW-2 TC-ER 1000V	.4249578
SOUTHWIRE 64624299 14/4 + 16/1PR SHIELDED VFD CABLE RHH-RHW-2 TC-ER 1000V	.4226140
SOUTHWIRE 64624399 CUT 12/4C + 16/1PR SHIELDED VFD CABLE RHH-RHW-2 TC-ER 1000V	.4258827
SOUTHWIRE 64624499 CUT 10/4C + 16/1PR SHIELDED VFD CABLE RHH-RHW-2 TC-ER 1000V	.4258828

SOUTHWIRE VFD TERMINATION KITS	
Wire Size	Part Number
SOUTHWIRE 65-09-96-01 16AWG -14AWG VFD CABLE TERMINATION KIT	.4259269
SOUTHWIRE 65-09-97-01 12AWG - 6AWG VFD CABLE TERMINATION KIT	.4251862

Industrial Cables

- Instrumental cables
- High temp
- Thermostat wire
- Industrial cable
- Photovoltaic wire
- Multi conductor wire
- Belden computer/data cables
- Belden control/audio cables
- Tray cables
- Belden tray cables
- General industrial cable
- General VFD cable

INSTRUMENTAL CABLES	
Wire Size	Part Number
OMNI D11802 18/2	.2078730
OMNI D11803 18/3	.2124274
OMNI G11802-03	.3795694
OMNI K31602 16/1	.2124275

HIGH TEMP	
Wire Size	Part Number
TGGT 10 TAN HIGH TEMP	.4204972
TGGT 12 TAN HIGH TEMP	.4204973
TGGT 14 TAN HIGH TEMP	.4204974

THERMOSTAT WIRE	
Wire Size	500'
18/2	.4025840
18/3	.4025845
18/4	.4025847
18/5	.4025848
18/6	.4025850
18/8	.4000680

LAPP 190 SERIES	
Wire Size	Part Number
OLF 601404 14/4 CABLE CUT	.52950
OLF 601603 16/3 CABLE CUT	.52953
OLF 601607 16/7 CABLE CUT	.52957
OLF 601612 16/12 CABLE CUT	.3772526
OLF 601618 16/18 CABLE CUT	.4087956
OLF 601625 16/25 CABLE CUT	.3791583
OLF 601807 18/7 CABLE CUT	.4092234
OLF 601812 18/12 CABLE CUT	.52967
OLF 601818 18/18 CABLE CUT	.3763445
OLF 601825 18/25 CABLE CUT	.52968

LAPP FLEX TRAY SERIES	
Wire Size	Part Number
OLF 221803 18/3 CABLE CUT	.4074666
OLF 221603 16/3 CABLE CUT	.4074667
OLF 221604 16/4 CABLE CUT	.4074668
OLF 221607 16/7 CABLE CUT	.3907569
OLF 221609 16/9 CABLE CUT	.3923213
OLF 221404 14/4 CABLE CUT	.4074671
OLF 221204 12/4 CABLE CUT	.4074693

NON-SHIELDED VNTC	
Wire Size	Cut
VNVC 16/3 BLACK-RED-BLUE	.4204919
VNVC 16/4 BLACK-RED-BLUE-ORANGE	.4204918
VNVC 14/3 BLACK-RED-BLUE	.4204929
VNVC 14/4 BLACK-RED-BLUE-ORANGE	.4204927
VNVC 14/5 BLACK-RED-BLUE-ORANGE-YELLOW	.4204924
VNVC 14/7 BLACK-RED-BLUE-ORANGE-YELLOW-BROWN- RED/BLACK	.4204923
VNVC 14/9 BLACK-RED-BLUE-ORANGE-YELLOW-BROWN- RED/BLACK-BLUE/BLACK-ORANGE/BLACK	.4204922
VNVC 12/3 BLACK-RED-BLUE	.4204931
VNVC 12/4 BLACK-RED-BLUE-ORANGE	.4204930
VNVC 10/3 BLACK-RED-BLUE	.4204932
VNVC 10/4 BLACK-RED-BLUE-ORANGE	.4204933
VNVC 6/3 GREEN GROUND BLACK JACKET	.3755794
VNVC 8/3 GROUND BLACK CONDUCTORS	.3793409

Industrial Cables (continued)



BELDEN MULTI COND CABLES		
Wire Size	Cut	1000'
1048A 18/2 PAIR SHIELDED CABLE		.3772331
1058A 20/1 UNSHLD	.4063864	.3809627
27341A 16 /12C TRAY CABLE	.3807912	
9318 18/1 FOIL SHIELD STR	.3883674	.18096
9408 20/1 TWISTED PAIR 300V		.2637853
9492 20/1T BC PVC/PVC	.2412438	.3897910
9513 22/3 PAIR 300V TRAY CABLE	.4026936	
9365 18/3 CON 300V TRAY CABLE	.4028107	
9556 18/6 PAIR 300V TRAY CABLE	.3810549	
9552 18/2 PAIR 300V TRAY CABLE	.3915892	
9553 18/3 PAIR 300V TRAY CABLE	.3906385	
9312 12/1 PAIR 300V TRAY CABLE	.4045927	
3082A 15AWG/1PR PLUS 18AWG/1PR	.1669870	
3084A 22AWG/1PR PLUS 24/PR INDIVIDUAL SHIELDS	.1669869	
3092A 18/1 SHIELD	.1669872	
8104 24/4P TC DATALENE/PVC		.3897901
8105 24/5P TC DATALENE/PVC DSHLD		.3897905
9463 20/1 FOIL SHIELD	.1441839	.18115
8719 16/1 SHLD CNTRL/AUDIO	.1676088	
8720 14/1 SHLD CNTRL/AUDIO		.18060
8723 22/2 SHLD CNTRL/AUDIO		.18062
8760 18/1 SHLD CNTRL/AUDIO	.18067	.18065
8761 22/1 SHLD CNTRL/AUDIO		.18069
8762 20/1 SHLD CNTRL/AUDIO		.18070
8770 18/3 SHLD CNTRL/AUDIO	.1435523	.18072
8772 20/3 SHLD CNTRL/AUDIO	.2001999	
9418 18/4 SHLD CNTRL/AUDIO	.1506445	.18108
9439 20/7C TC PVC/PVC		.3897911
9444 20/4 SHLD CNTRL/AUDIO	.3804272	
9457 20/12 INSTRUMENTATION CABLE		.2429330
9925 COMPUTER CABLE		.18173

SHIELDED VNTC	
Wire Size	Cut
VNVC 18/2 SHIELDED BLACK-RED	.4204911
VNVC 18/4 SHIELDED BLACK-RED-BLUE-ORANGE	.4204912
VNVC 18/7 SHIELDED BLACK-RED-BLUE-ORANGE-YELLOW-BROWN- RED/BLACK	.4204913
VNVC 16/4 SHIELDED BLACK-RED-BLUE-ORANGE	.4204910
VNVC 14/4 SHIELDED BLACK-RED-BLUE-ORANGE	.4204901
VNVC 14/7 SHIELDED BLACK-RED-BLUE-ORANGE-YELLOW-BROWN- RED/BLACK	.4204902
VNVC 12/4 SHIELDED BLACK-RED-BLUE-ORANGE	.4204900
VNVC 10/4 SHIELDED BLACK-RED-BLUE-ORANGE	.4204899

Aluminum



- Service entrance style U
- Underground service entrance
- Underground residential distribution

- Service entrance style R
- Aluminum conductor, steel reinforced
- Feeder MC cable aluminum

SERVICE ENTRANCE STYLE U	
Wire Size	Cut Part Number
ALUMINUM SEU 2-2-2	.60328
ALUMINUM SEU 4/0-4/0-2/0	.2374412
ALUMINUM SEU 4/0-4/0-4/0	.1419429

SERVICE ENTRANCE STYLE R	
Wire Size	Cut Part Number
ALUMINUM SER 1-1-1-3	.1389172
ALUMINUM SER 2-2-2-2-4	.671205
ALUMINUM SER 2-2-2-4	.60295
ALUMINUM SER 4/0-4/0-4/0-2/0	.60299
ALUMINUM SER 4/0-4/0-4/0-4/0-2/0	.1597277
ALUMINUM SER 4-4-4-6	.60303
ALUMINUM SER 6-6-6	.2442250
ALUMINUM SER 6-6-6-6	.1595486
ALUMINUM SER 8-8-8-8	.1304766

UNDERGROUND SERVICE ENTRANCE	
Wire Size	Cut Part Number
ALUMINUM USE 2 BLACK STR	.66843
ALUMINUM USE 4 BLACK	.66856
ALUMINUM USE 4/0 BLACK	.66851

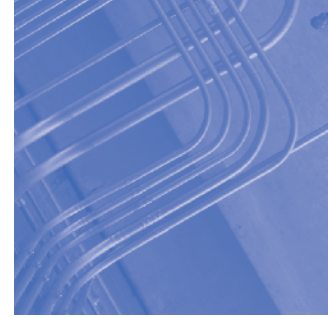
ALUMINUM CONDUCTOR, STEEL REINFORCED	
Wire Size	Cut Part Number
ALUMINUM ACSR 1/0-4 COSTENA	.3798592
ALUMINUM ACSR 2-3 CONCH	.13882
ALUMINUM ACSR 2-4 PALOMINO	.13883
ALUMINUM ACSR 4/0-4 APPALOOSA	.13885
ALUMINUM ACSR 4-4 HACKNEY	.13892
ALUMINUM ACSR 6-3 VOLUTA	.13898

A8000 SERIES TRIPLES UNDERGROUND RESIDENTIAL DISTRIBUTION	
Wire Size	Cut Part Number
ALUMINUM URD 1/0-1/0-1/0 BERGEN	.66813
ALUMINUM URD 2-2-2-4 DYKE	.1441923
ALUMINUM URD 2-3 RAMAPO	.66820
ALUMINUM URD 4/0-2&2/0-1 SWEETBRIAR	.2458585
ALUMINUM URD 4/0-3 MONMOUTH	.66821
ALUMINUM URD 4/0-4/0-4/0-2/0 WAKE FOREST	.1676754
ALUMINUM URD 4-3 VASSAR	.66825
ALUMINUM URD 6-6-6 ERSKINE	.66829

FEEDER MC CABLE ALUMINUM	
Wire Size	Cut Part Number
MCAL 6-6-6 w/#6 grd	.3836246
MCAL 2-2-2 w/#4 grd	.3765675
MCAL 1-1-1 w/#4 grd	.3939609
MCAL 1-1-1-1 w/#4 grd	.2645366
MCAL 4/0-4/0-4/0-4/0 w/#2 grd	.3783507
MCAL 250-250-250-250 w/#1 grd	.3939610

Conduit

- Conduit
- PVC
- Colored EMT



CONDUIT				
Size	EMT	GALV Steel	IMC	Alum Rigid
CONDUIT 1/2"	.28842	.30052	.40854	.14391
CONDUIT 3/4"	.28844	.30053	.40855	.14392
CONDUIT 1"	.28847	.30054	.40856	.14393
CONDUIT 1-1/4"	.28850	.30055	.40857	.14394
CONDUIT 1-1/2"	.28853	.30056	.40858	.14395
CONDUIT 2"	.28857	.30057	.40859	.14396
CONDUIT 2-1/2"	.28860	.30058	.40861	.14397
CONDUIT 3"	.28863	.30060	.40862	.14398
CONDUIT 3-1/2"	.28865	.30062	.40865	.14399
CONDUIT 4"	.28867	.30063	.40867	.14400
CONDUIT 5"	Non-Stock	Non-Stock	Non-Stock	.14401

FLEX STEEL CONDUIT			
Size	50'	100'	Cut
FSC037 3/8" FLEX STEEL REDUCED COIL		.29721	
FSC050 1/2" FLEX STEEL REDUCED COIL	.3916294	.29722	
FSC075 3/4" FLEX STEEL REDUCED COIL	.4027129	.29723	
FSC100 1" FLEX STEEL REDUCED 50' COIL	.29724		.1590221
FSC125 CUT 1-1/4" FLEX STEEL			.1590222
FSC150 CUT 1-1/2" FLEX STEEL			.1590223
FSC200 CUT 2" FLEX STEEL			.1590224
FSC250 CUT 2-1/2" FLEX STEEL			.1590225
FSC300 CUT 3" FLEX STEEL			.1590226
FSC350 CUT 3-1/2" FLEX STEEL			.2560816
FSC400 CUT 4" FLEX STEEL			.3976751

LIQUIDTIGHT FLEX CONDUIT UL			
Size	25'	100'	Cut
3/8" LA-10		.47613	.1660549
1/2" LA-11		.47614	.1652213
3/4" LA-12		.47616	.1680534
1" LA-13		.47619	.1680533
1-1/4" LA-14		.47620	.1672539
1-1/2" LA-15			.1942492
2" LA-16			.1672641
2-1/2" LA-17			.1988363
3" LT/LA-18			.1657593
3-1/2" LA/LT-350			.4073860
4" LT/LA-19	.2422203		.2041462

PVC			
Size	SCHED-40	SCHED-80	20' SCHED-40
1/2"	.58068	.58069	Non-Stock
3/4"	.58070	.58071	.3844135
1"	.58072	.58074	.2387710
1-1/4"	.58075	.58076	.3844134
1-1/2"	.58077	.58078	.3931942
2"	.58079	.58080	.1325735
2-1/2"	.58081	.58082	.4015030
3"	.58083	.58085	.58084
3-1/2"	.58086	Non-Stock	.3931949
4"	.58087	.58088	.3972145
5"	.58089	Non-Stock	Non-Stock
6"	.58091	Non-Stock	Non-Stock

FLEX ALUM CONDUIT			
Size	50'	100'	
FAC037 3/8" FLEX ALUM 100' COIL		.29180	
FAC050 1/2" FLEX ALUM REDUCED 100' COIL		.29181	
FAC075 3/4" FLEX ALUM REDUCED 100' COIL		.29182	
FAC100 1" FLEX ALUM REDUCED 50' COIL	.29183		
FAC125 1-1/4" FLEX ALUM REDUCED 50' COIL	.29184		

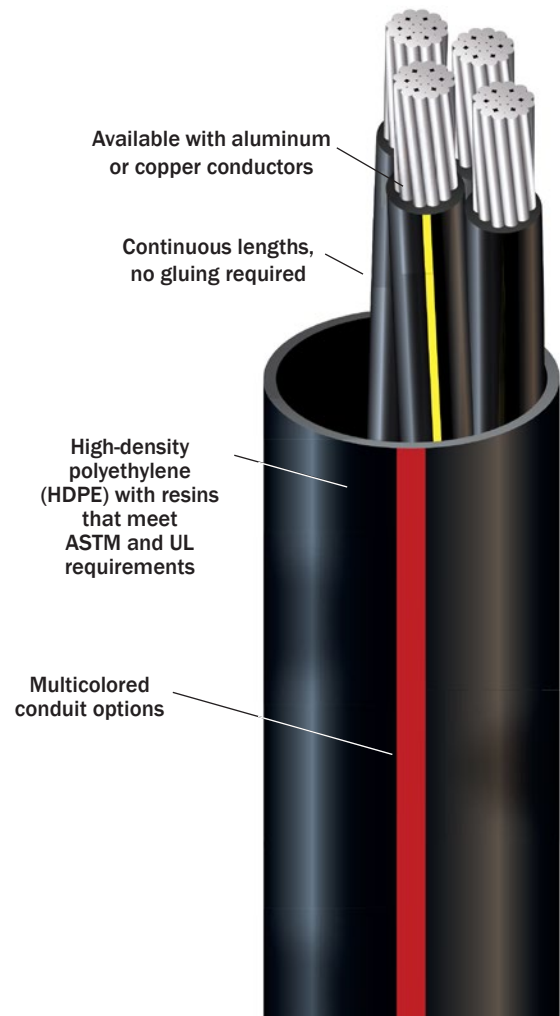
COLORED EMT								
EMT SIZE	BLACK	BLUE	GREEN	ORANGE	RED	WHITE	YELLOW	PURPLE
1/2"	.3878907	.3874088	.3979934	.3874089	.1564445	.3890980	.3874087	.4080947
3/4"	.3907591	.3859975	.3901581	.3872321	.1412483	.3882381	.3872323	.3946591
1"	Non-Stock	.3860186	.3957226	Non-Stock	.3860185	.3882385	.3872325	.3946592
2"	Non-Stock	.3872177	.3954387	Non-Stock	.3981339	Non-Stock	Non-Stock	Non-Stock

SIMpull® Cable-In-Conduit

Why SIMpull® Cable-In-Conduit (CIC)

- One-step installation saves time, money and equipment costs
- Conduit protects cable from damage due to installation, transit, weather and rodents
- Increased flexibility eliminates low-temperature breakage
- Lower replacement costs, reduced outage time, reduced property damage and allowance of cable upgrade

SOUTHWIRE CABLE IN CONDUIT HDPE BLACK CONDUIT		
Wire Size	Conduit Size	Werner #
10/4 THHN BLACK/RED/WHITE/GREEN	3/4" HDPE	.4143031
10/4 THHN BROWN/ORANGE/GRAY/GREEN	3/4" HDPE	.4143032
8/7c THHN BR/Gy w-BR/OR/GY w-OR/YE/Gy w-YE/GR	1" HDPE	.4143035
8/3c w #10g THHN BLACK/RED/WHITE #10 GREEN GROUND	1" HDPE	.4143039
6/3c w #8g THHN BLACK/WHITE/RED #8 GREEN GROUND	1" HDPE	.4143121
6/2c w #8g THHN BLACK/RED #8 GREEN GROUND	1" HDPE	.4143125
6/3c w #8g THHN BROWN/ORANGE/GRAY #8 GREEN GROUND	1" HDPE	.4143126
SOUTHWIRE 1" HDPE EMPTY BLACK CONDUIT CUT 63:11:67:02 (WERNER CUT)	1" HDPE	.4143129
SOUTHWIRE 3/4" HDPE EMPTY DUCT W/PULLTAPE 2500' 63:20:29:01	3/4" HDPE	.4176612



Protect the power inside with SIMpull® Cable-In-Conduit (CIC)

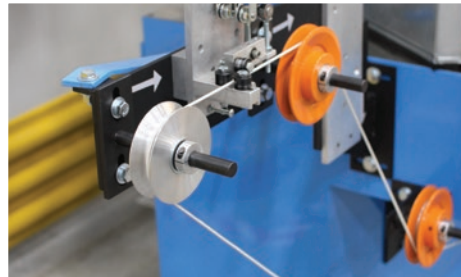
Value Added Services



Custom Wire Stripping

Using our vast wire inventory, we can now customize your wire runs with eleven different colors. We supply 72-hour turnaround on in-house custom stripping.

- 18-10 AWG
- THHN
- TFFN
- XHHW
- MTW



SPEEDPULL

SPEEDPULL bundles and binds together different types of wire and cable into one compact, flexible, multi-conductor cable. This can include color-coded or numbered copper and electronic conductors. SPEEDPULL provides faster installations and easier identification with every run. Cost savings can increase by up to 30 percent!

- Multiple-type, custom-bundled cables on a single spool
- One fast cable pull
- Easy installation with significant labor savings
- Simplifies material management and reduces material waste on the job
- Quick turnaround



Paralleling Options

4 COMPARTMENT			FREE SPINNING REEL
Wire Size	Minimum Footage Per Compartment	Maximum Footage Per Compartment	Maximum Footage Per Compartment
6	150	7500	4250
4	150	4700	2750
2	150	3300	1750
1	150	2500	1350
1/0	150	2100	1200
2/0	150	1900	900
3/0	100	1400	800
4/0	100	1100	650
250	85	900	500
300	75	800	450
350	50	700	375
400	50	600	350
500	50	500	375
600	40	400	225
750	25	325	175
900	15	275	150
1000	15	235	125



4 Compartment Quad Spool w/free spinning compartment

- 47" outside diameter
- Single compartment for ground
- Includes A-frame w/casters
- 8awg - 600awg CU
- 1awg - 750awg AL



4 Compartment Quad Spool

- 40" OD 16" ID 32" WIDE
- Available on A-frame or just quad spool
- 8awg - 600awg CU
- 1awg - 750awg AL



Wood Spool

- Available on A-frame or just wood spool
- Can parallel any length and as many colors as needed on one spool
- 8awg - 600awg CU
- 1awg - 750awg AL



A Frame

- Used on either 4 compartment quad spool or wood spool
- 45" x 47" x 36" tall
- 5000 lb. capacity

MC Home Run Barrel

- More material = less waste
- No lifting reels or bending over
- **THHN Barrel** – 1 through 7 conductor
12 through 6 AWG
- **MC Barrel** – MCAL and MCAP barrels
14-2 through 10-3



Southwire PB2000 BENDmax Power Bender

- Easily adjustable to working height
- 3/4" - 2" EMT, IMC, GRC
- Industrial grade DC drive
- Includes free standing conduit roller support



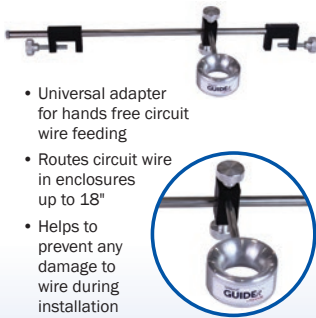
Southwire SIMpull™ Reel

- Independently rotating outer flanges
- Separately rotating inner reel
- Integral magnetic reel chocks roller support
- 51" H x 32" W
- Eliminates the need for jacks and conduit
- Stacking ability with SIMpull™ Stacking



Southwire®
SIMpull SOLUTIONS™

Guide It



- Universal adapter for hands free circuit wire feeding
- Routes circuit wire in enclosures up to 18"
- Helps to prevent any damage to wire during installation
- Reduces the need to route circuit wire into a raceway or conduit



Grip It



- Reusable pulling head for circuit wire
- Easily attach up to 7 wires
- Easily connects to fish tape, string or maxis rope
- No need to tape wire

Maxis Pro Jax



- One person can easily transport through most jobsite environments
- Pro-Jax stands can lift up to 6000 lbs.
- Uses an 18V cordless drill to lift wire reels
- Easy adjustment for uneven surfaces on jobsite

XD-1



- 600lbs of constant pulling force with 1000 lbs peak pulling force
- Lightweight and portable
- One person set-up and operation
- Accepts most commercial 18V cordless drills
- Removable capstan to facilitate rope removal

XD-10

A 10,000 pound puller that sets up in less than 5 minutes

- Ready to pull - no assembly
- Booms out to 12 ft.
- 10,000 lbs. pulling strength
- Pulls at 9 fpm and 25 fpm



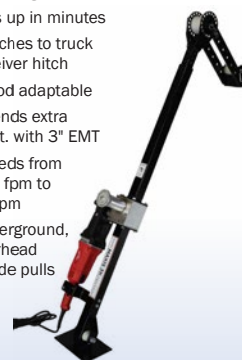
M6K-M

- One person set up and operation
- Light-weight (74 lbs. without drill or adapters)
- 6,000 lbs. pulling force
- 2 pulling speeds
- 12 ft./min low speed
- 44 ft./min high speed



M3K-M

- Lightweight
- Sets up in minutes
- Attaches to truck receiver hitch
- Tripod adaptable
- Extends extra 10 ft. with 3" EMT
- Speeds from 100 fpm to 17 fpm
- Underground, overhead & side pulls



CK-01



- Rugged transport system for (8) SIMpull® CoilPAK™ Payoffs with an integrated pay off system
- Innovative staging springs allow you to secure and organize up to 8 wires
- Best for scenarios where conductors are frequently changing, adding or dropping

U100

- Can hold and transport a variety of materials, tools, supplies and SIMpull® CoilPAK™ Payoffs
- Ability to hold up to 8 SIMpull® CoilPAK™ Payoffs
- Incorporated low payoff height for easy circuit wire pulling at any angle



SBT-01

The SIMpull® BARREL™ Hand Truck, when used with the SIMpull® BARREL™ package, replaces the old wire cart and reels and the issues associated with them

- Solid rubber tires for no-flat jobsite peace of mind
- Rugged steel frame with unique design



SBT-02



- The SIMpull® BARREL™ Tripod is a circuit wire guide that mounts easily on the rim of the SIMpull® BARREL™
- This wire guide system provides a unique means for guiding the paralleled conductors out of the barrel when it is not on the SIMpull® BARREL™ hand truck

Maxis Ropes



- Sizes 1/8", 1/4", 9/16"
- 9/16" - breaking strength of 32,000 lbs. pound for pound stronger than steel
- 1/8" breaking strength of 1,100 lbs.
- 1/4" breaking strength of 7,500 lbs.
- Does not absorb water, no rope rot.
- Need only 9/16" for feeder pulls

Cable Puller

Rental Program

XD10 Pulling Package

Everything
you need
to do
the pull!



Includes:

- Southwire® XD 10 Puller
- 600' Southwire® QWIK Rope
- Southwire® Wireless Trigger
- Southwire® Swivel

also available

6K Pulling Package without Triggers



Southwire®

Contact Your Werner Electric Sales Personnel
for Further Details at 866-4-WERNER.



COMMODITY STOCK GUIDE

Our experts have years of experience helping people like you evaluate your wire and cable needs.



866-4-WERNER • WernerElectric.com