

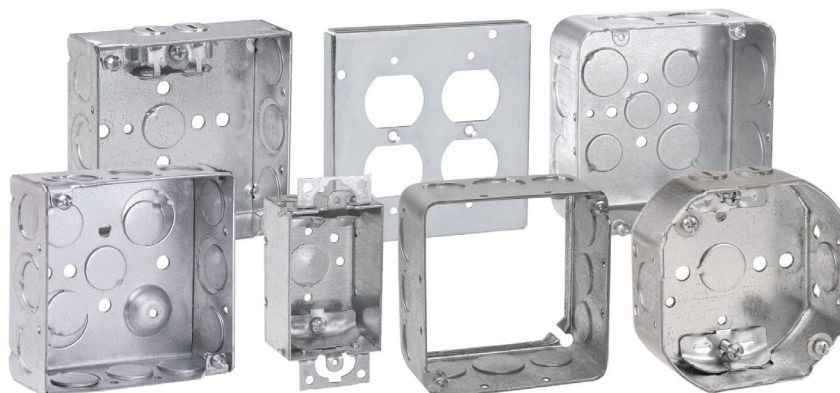
Switch & outlet boxes – technical data

Outlet boxes and covers

Eaton's has assembled one of the most complete outlet box product lines in the business. We've been leading in quality and selection for decades and throughout the Crouse-Hinds series steel outlet box offering, you will find innovative products and solutions that save labor, cut material costs and increase productivity.

We have a complete offering of:

- 4" and 4¹/₁₆" square drawn and welded boxes with raised cover plate screws for ease of attaching covers
- 4" square and 4¹/₁₆" , switch, masonry, utility, outlet, ceiling, fan and gangable boxes
- Drawn boxes available with concentric knockouts, combining 1/2" and 3/4" knockout
- Complete line of covers, partitions, extension rings and accessories
- Uni-Mount™ covers
- Quick-Lok™ outlet boxes and assemblies
- PRE-formance™ products
- Pre-assembled boxes which includes Uni-Mount cover attached to 4" square box
- Pre-fabricated boxes which includes Uni-Mount cover attached to 4" square box with ground screw and lead installed
- Fire alarm boxes and covers
- **Boxes available with various means of grounding including**
 - **Tapped ground holes**
 - **Pre-installed ground screw, add "G" suffix to box catalog number**
 - **Pre-installed ground pigtail, add "PF" suffix to box catalog number**



Switch & outlet boxes – technical data

General information

Compliances:

Article 314 of the National Electrical Code® (NEC®) covers the installation and use of boxes. The article includes table references that guide the electrician in the selection of the proper size box necessary to safely accommodate electrical service requirements. The box capacity table is reproduced in part from NEC as a quick reference and guide. The NEC should be consulted for complete details.

Outlet boxes for fixture or fan support:

A box, with or without a bracket or bar hanger, intended for support of a fixture/luminaire weighing 50 lbs. or less is marked "FOR FIXTURE/LUMINAIRE SUPPORT" on the carton to indicate that the box is intended for fixture/luminaire support. A box, with or without a bracket or bar hanger, intended for support of a fixture/luminaire weighing more than 50 lbs. is marked with the weight of the fixture/luminaire to be supported. Metallic device boxes and device plaster rings have not been investigated for support of a ceiling fixture/luminaire unless marked for use in ceilings, walls and with the weight of the product to be supported. Metallic device boxes intended to be installed in an existing structure have been investigated for the support of utilization equipment weighing not more than 6 lbs.

Knockouts:

Under File No. E-23156, Eaton's Crouse-Hinds Series concentric and "moon" KO style boxes, the following is stated "Suitable for bonding without any additional bonding means around concentric (or eccentric) knockouts where used in circuits above or below 250V."



Fire resistance rating wall penetrations:

Eaton's Crouse-Hinds series products are produced in accordance with the requirements of UL514A, UL514B and UL514C, and are classified for fire resistance according to the standard, Fire Tests of Building Construction and Materials, ANSI/UL263, ASTM E 119 and NFPA 251. This listing is based on products when used in a fire rated (2 HR) wall or ceiling. Eaton's Crouse-Hinds series steel boxes are listed with UL File No. E-23156 and non-metallic boxes are listed with UL File No. E-102328 and UL (2 HR fire rated) File No. R9933.

NEMA standards:

Eaton's Crouse-Hinds series switch and outlet boxes comply with the requirements of NEMA Standard OS-1 and Federal Spec. W-J-800F.

Grounding hole:

The majority of Crouse-Hinds outlet boxes have at least one tapped #10-32 grounding hole.

Combination screw heads:

Cover and clamp screws have combination slotted/Phillips screw heads. Self-tapping screws provide for 100% thread engagement.



Third party certification information:

Third party certification documents can be found on the product detail page of the Eaton website. Just click on the resource tab and click on the link to view the third party document. Document can then be saved or printed.

UNITED STATES Home | Sign in

EATON
Powering Business Worldwide

Products Services Markets Support Company

BOXES AND COVERS
4-inch Steel Square Outlet Boxes, Covers, Extension Rings

Overview Models Support resources

How to buy

Back to search

Catalogs +

Certification reports -

- Canadian certification
- UL certification

Product specification guides +

Outlet boxes

Standard materials – steel covers, outlet and switch boxes:

- Steel boxes and covers are made of .0625 inch thick pre-galvanized sheet steel
- Handy box covers are made of .030 inch thick galvanized sheet steel

Switch & outlet boxes – technical data

Calculating box size and wire fill

Calculate the minimum box size:

NEC® 314.16 (A) and (B) describes the detailed way of counting wires, as well as clamps, fittings or devices (i.e., switches, receptacles, combination devices) – by establishing an equivalent conductor value for each. Those values are added together to get a total number of conductors. The minimum size box is the smallest one in Table 314.16(A) that can accommodate that number of conductors.

1. No matter how many ground wires come into a box, they only count as one conductor within the box.
2. Any wire running unbroken through the box counts as one wire.
3. Each wire coming into a splice device (crimp or twist-on type) is counted as one wire.
4. Each wire coming into the box and connecting to a device counts as one wire of that size.
5. Fixture studs, cable clamps and hickies are to be counted as one regardless of how many there may be. If a box contains two cable clamps, the total is only to be increased by one.
6. Where devices are mounted in the box, the total conductor count must be increased by two for each mounting strap.

Example #1:

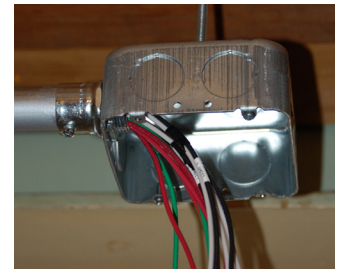
Conduit Boxes: Supply power to a switch that will control a remote light with #14 conductors. Metal conduit and fittings will be used as the wire way. You must provide space for four conductors and one switch, totaling 6. Read across the line “Allowances” in the Box Fill table to column 6, then read down to the minimum cubic inches required for #14 conductor. This example requires a minimum of 12.0 cubic inches.

Example #2:

Cable Boxes: This example will illustrate how the minimum size is determined for a box with cable clamps fed by two #12-2 nonmetallic sheathed cables and supplying a 15A duplex receptacle. After supplying the receptacle, the conductors are extended to other outlets.

Circuit conductors.....	4
Ground conductors	1
Cable clamps	1
Device (receptacle)	2
Total	8

Using the Box Fill table from the next page, read across the line “Allowances” to column 8, then down to the minimum cubic inches required for #12 conductor. This example requires a minimum of 18.0 cubic inches.



Switch & outlet boxes – technical data

Table 314.16(A) metal boxes

Box dimension (in.) Trade Size or Type	Min.	Maximum number of conductors (arranged by AWG size)						
	Cu. in. Cap.	No. 18	No. 16	No. 14	No. 12	No. 10	No. 8	No. 6
4 X 1¼ round or octagonal	12.5	8	7	6	5	5	5	2
4 X 1½ round or octagonal	15.5	10	8	7	6	6	5	3
4 X 2⅝ round or octagonal	21.5	14	12	10	9	8	7	4
4 X 1¼ square	18.0	12	10	9	8	7	6	3
4 X 1½ square	21.0	14	12	10	9	8	7	4
4 X 2⅝ square	30.3	20	17	15	13	12	10	6
4⅞ X 1¼ square	25.5	17	14	12	11	10	8	5
4⅞ X 1½ square	29.5	19	16	14	13	11	9	5
4⅞ X 2⅝ square	42.0	28	24	21	18	16	14	8
3 X 2 x 1½ device	7.5	5	4	3	3	3	2	1
3 X 2 x 2 device	10.0	6	5	5	4	4	3	2
3 X 2 x 2¼ device	10.5	7	6	5	4	4	3	2
3 X 2 x 2½ device	12.5	8	7	6	5	5	4	2
3 X 2 x 2¾ device	14.0	9	8	7	6	5	4	2
3 X 2 x 3½ device	18.0	12	10	9	8	7	6	3
4 X 2⅝ x 1½ device	10.3	6	5	5	4	4	3	2
4 X 2⅝ x 1⅞ device	13.0	8	7	6	5	5	4	2
4 X 2⅝ x 2⅞ device	14.5	9	8	7	6	5	4	2
¾ X 2 x 2½ masonry box/gang	14.0	9	8	7	6	5	4	2
¾ X 2 x 3½ masonry box/gang	21.0	14	12	10	9	8	7	4
FS - 1¼ single cover gang	13.5	9	7	6	6	5	4	2
FD - 2⅝ single cover gang	18.0	12	10	9	8	7	6	3
FS - 1¼ multiple cover gang	18.0	12	10	9	8	7	6	3
FD - 2⅝ multiple cover gang	24.0	16	13	12	10	9	8	4

Table 314.16(B) volume required per conductor

Size of conductor	Free space within box for each conductor
No. 18	1.5 cubic inches
No. 16	1.75 cubic inches
No. 14	2 cubic inches
No. 12	2.25 cubic inches
No. 10	2.5 cubic inches
No. 8	3 cubic inches
No. 6	5 cubic inches

For SI units: one cubic inch = 16.4 cm³.

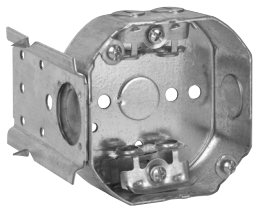
Reprinted with permission from NFPA 70-2005, the National Electrical Code®, Copyright® 2017 National Fire Protection Association, Quincy MA 02269. This reprinted material is not the complete and official position of the National Fire Protection Association, on the referenced subject which is represented only by the standard in its entirety. National Electrical Code® and NEC® are registered trademarks of the National Fire Protection Association, Inc., Quincy, MA 02269.

Switch & outlet boxes – technical data

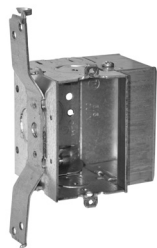
Outlet box brackets

Bracket technical data

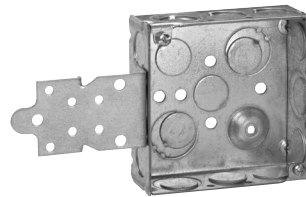
Bracket type	C	D	F	S	SD	VP	VS	H	M	MSB	SSB	VMS
Length	3 ⁵ / ₈	5 ¹³ / ₁₆	2 ⁷ / ₈	5 ¹³ / ₁₆	5 ⁹ / ₁₆	6 ⁶¹ / ₆₄	6 ⁵⁹ / ₆₄	2 ¹ / ₂	2 ¹ / ₂	2 ¹ / ₂	1 ¹ / ₄	6 ¹³ / ₁₆
Width	2 ¹ / ₂	7 ⁷ / ₈	1 ³ / ₄	7 ⁷ / ₈	1 ⁵ / ₁₆	1 ⁹ / ₁₆	1 ⁹ / ₁₆	1 ³ / ₃₂	1 ³ / ₃₂	1 ³ / ₈	2 ¹ / ₈	1 ³ / ₈
Set back	1 ¹ / ₄	5 ⁵ / ₈		5 ⁵ / ₈	5 ⁵ / ₈	3 ³ / ₈	7 ⁷ / ₈					5 ⁵ / ₁₆
For metal		√	√		√		√	√	√	√	√	√
For wood	√	√	√	√	√	√	√	√	√			√
Stud mount	side/ceiling	side	face	side	side	side	side	face	face	face	face	side



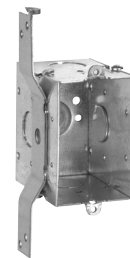
"C" bracket



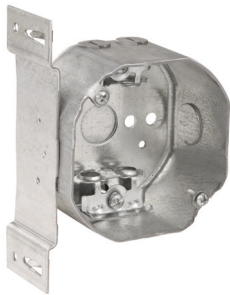
"D" bracket



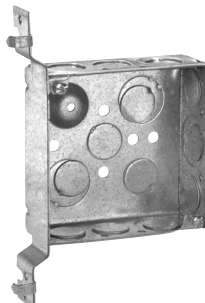
"F" bracket



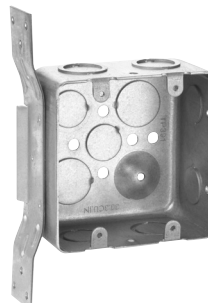
"S" bracket



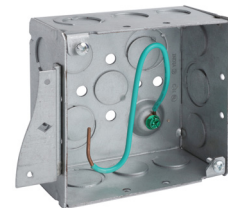
"SD" bracket



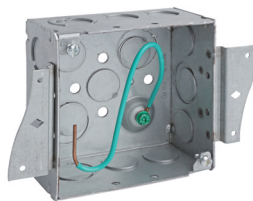
"VP" bracket



"VS" bracket



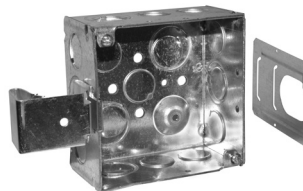
"H" bracket



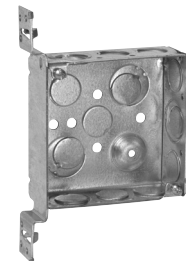
"M" bracket



"MSB" bracket



"SSB" bracket



"VMS" bracket

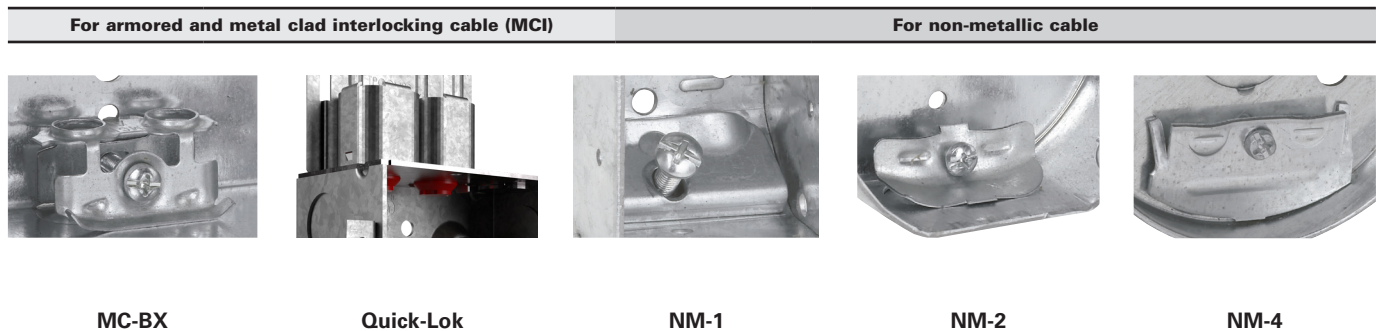
Switch & outlet boxes – technical data

Outlet box clamps

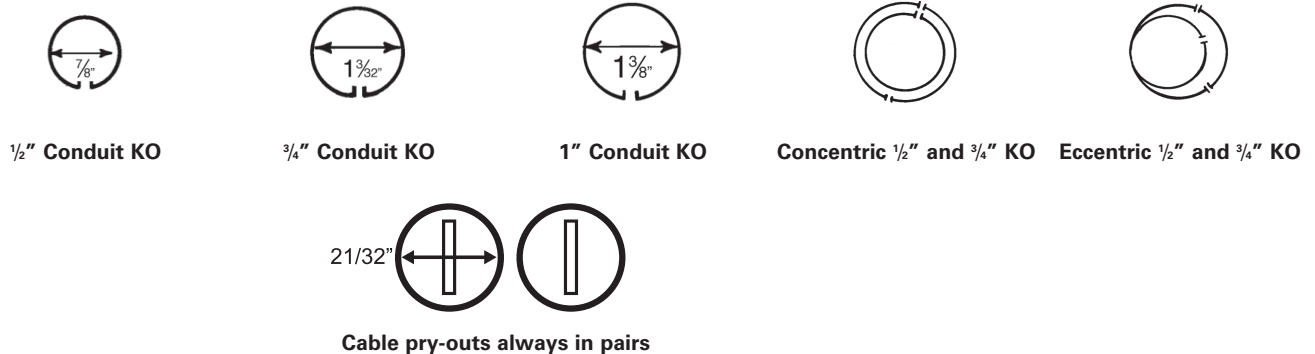
Clamp technical data

Clamp type	Raceway type							
	Armored cable (BX)		Metal clad interlocking cable (MCI)				Non-metallic sheathed cable	Flexible metallic conduit
	Steel	Aluminum	Steel	Aluminum	Steel (MC-PCS)	Aluminum (MC-PCS)		
Quick-Lok boxes	#14-2 to 10-4	#14-2 to 10-4	#14-2 to 10-3	#14-2 to 10-3	#12-2 to 10-2	#12-2 to 12-3	—	—
MC-BX	#14-2 to 12-3	#14-2 to 10-2	#14-2 to 10-2	#14-2 to 10-2	—	—	—	$\frac{7}{32}$ " trade size
NM-1	—	—	—	—	—	—	#14-2 to #12-3 w/ground	—
NM-2	—	—	—	—	—	—	#14-2 to #12-3 w/ground	—
NM-4	—	—	—	—	—	—	#14-2 to #12-3 w/ground	—

Note: Applicable and listed Southwire Armorlite™ all purpose type MC cable and all purpose hospital care facility type HCF MC cable



Outlet box entry knockout and pryouts



Conduit KOs have standard trade size dimensions. KOs are uniform and true for attachment of cable or conduit connectors. Pry-outs for cable entrance are slotted – a twist with screwdriver removes them. KOs and pry-outs are precision stamped to permit easy removal, but remain sufficiently strong and sturdy when not removed.

4" square drawn boxes feature a 1/2" and 3/4" "inverted" concentric KO – easily removed. Our 4" square welded boxes feature our 1/2" eccentric KO which also features easy removability of both the 1/2" and 3/4" KOs.

Note: These KOs are suitable for bonding without bonding jumpers around concentric (or eccentric) knockouts where used in circuits above or below 250V.

Steel square boxes

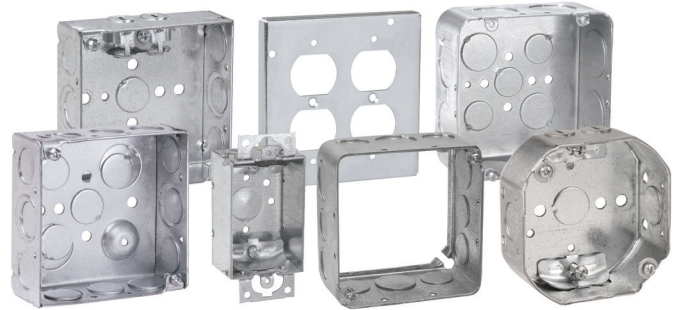
4" SQUARE OUTLET BOXES & COVERS

Applications:

- For use with conduit
- Available in red for fire alarm applications

Features:

- Ideal for exposed work applications, providing an easy method for the installation of electrical devices (switches, receptacles, fans, lights, etc.)
- Raised ground screw location in the welded boxes saves time in installation
- Available with pre-installed ground screws and pigtails for increased labor savings
- Knockouts are suitable for use without a bonding jumper in circuits above or below 250 volts
- Available in two depths for differing cubic capacity requirements
- Welded or drawn construction to match customer preference
- Extensive cover offering to meet various customer applications and needs



Certifications and compliances:

- UL Listed

4" SQUARE OUTLET BOXES – 18.0 CUBIC INCH CAPACITY

1 1/4" DEEP – FOR CONDUIT

UL LISTED



TP408

Knockouts

Cat. #	Bracket	Description	Grounding method	Knockouts		Fixture rated (weight lbs.)	Unit qty.	Wt. lbs. per 100
				Sides	Bottom			
TP408	-	Drawn	Tapped hole	12 – 1/2"	5 – 1/2"	50	50	61

Steel square boxes

4" SQUARE OUTLET BOXES – 22.0 CUBIC INCH CAPACITY (WELDED) 21.0 CUBIC INCH CAPACITY (DRAWN)

1 1/2" DEEP – FOR CONDUIT

UL LISTED



TP404



TP404SSB



TP404MSB



TP405



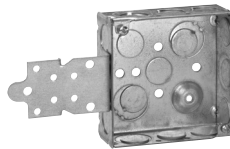
TP410



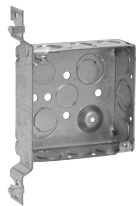
TP412
TP839[Ⓟ]



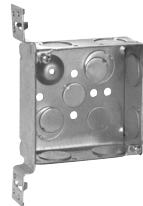
TP414



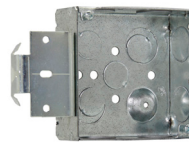
TP418



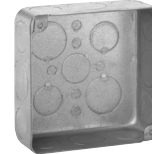
TP425



TP469[Ⓟ]



TP467MSB



TP830[Ⓟ]

Knockouts

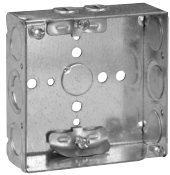
Cat. #	Bracket	Description	Grounding method	Sides	Bottom	Fixture rated (weight lbs.)	Unit qty.	Wt. lbs. per 100
TP404 [Ⓟ]	-	Welded	Ground bump	8 - 1/2", 4 - 1/2" + 3/4" E	2 - 1/2", 2 - 1/2" + 3/4" E	50	50	72
TP404MSB	MSB	Welded	Ground bump	8 - 1/2", 4 - 1/2" + 3/4" E	2 - 1/2", 2 - 1/2" + 3/4" E		25	83
TP404SSB	SSB	Welded	Ground bump	8 - 1/2", 4 - 1/2" + 3/4" E	2 - 1/2", 2 - 1/2" + 3/4" E		50	83
TP425	"VP"	Welded	Ground bump	6 - 1/2", 3 - 1/2" + 3/4" E	2 - 1/2", 2 - 1/2" + 3/4" E		25	82
TP423 [Ⓟ]	"VMS"	Welded	Ground bump	6 - 1/2", 3 - 1/2" + 3/4" E	2 - 1/2", 2 - 1/2" + 3/4" E		25	81
TP405	-	Drawn	Tapped hole	4 - 1/2", 6 - 1/2" + 3/4" C	3 - 1/2", 2 - 3/4"		50	67
TP410	-	Drawn	Tapped hole	12 - 1/2"	5 - 1/2"	50	50	67
TP412	-	Drawn	Tapped hole	8 - 3/4"	3 - 1/2", 2 - 3/4"		50	67
TP414 [Ⓟ]	-	Drawn	Ground bump	8 - 1/2", 4 - 3/4"	2 - 1/2", 2 - 3/4"		50	67
TP418	"F", set flush	Welded	Ground bump	6 - 1/2", 3 - 1/2" + 3/4" E	2 - 1/2", 2 - 1/2" + 3/4" E		25	84
TP467	-	Welded	Ground bump	8 - 3/4"	2 - 1/2", 2 - 1/2" + 3/4" E	50	50	72
TP467MSB	MSB	Welded	Ground bump	8 - 3/4"	2 - 1/2", 2 - 1/2" + 3/4" E		25	78
TP469	"VMS"	Welded	Ground bump	6 - 3/4"	2 - 1/2", 2 - 1/2" + 3/4" E		25	81
Air Plenum								
TP830 [Ⓟ]	-	Drawn	Tapped screw	8 - 1/2", 4 - 3/4"	3 - 1/2", 2 - 3/4"		50	72
TP839 [Ⓟ]	-	Drawn	Tapped screw	8 - 3/4"	3 - 1/2", 2 - 3/4"		50	72

[Ⓟ]For air plenum (no mounting holes) - not UL Listed.
[Ⓟ]Available in painted options.

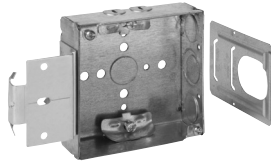
Steel square boxes

4" SQUARE OUTLET BOXES – 22.0 CUBIC INCH CAPACITY

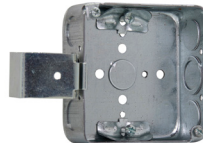
1½" DEEP
FOR NON-METALLIC CABLE – CLAMPS IN EACH END
UL LISTED



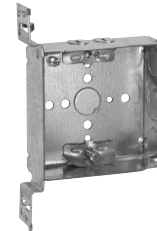
TP444



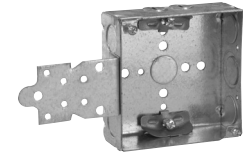
TP444MSB



TP444SSB



TP449



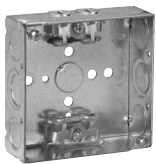
TP446

Cat. #	Bracket	Description	Knockouts		Unit qty.	Wt. lbs. per 100
			Sides	Bottom		
TP444	-	Welded	4 - cable, 4 - ½", 2 - ½" + ¾" E	1 - ½"	50	77
TP444MSB	MSB	Welded	4 - cable, 4 - ½", 2 - ½" + ¾" E	1 - ½"	25	81
TP444SSB	SSB	Welded	4 - cable, 4 - ½", 2 - ½" + ¾" E	1 - ½"	50	88
TP446	"F", set flush	Welded	4 - cable, 2 - ½", 1 - ½" + ¾" E	1 - ½"	25	88
TP449	"VMS"	Welded	4 - cable, 2 - ½", 1 - ½" + ¾" E	1 - ½"	25	85

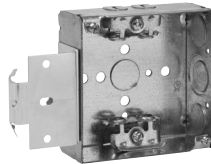
4" SQUARE OUTLET BOXES – 22.0 CUBIC INCH CAPACITY

1½" DEEP
FOR ARMORED & METAL-CLAD (MCI) CABLE & HCF CABLE – CLAMPS IN EACH END
UL LISTED

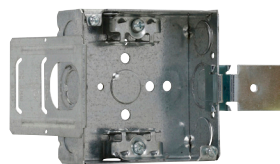
Steel boxes



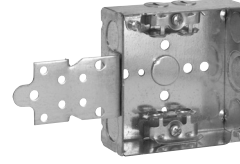
TP454



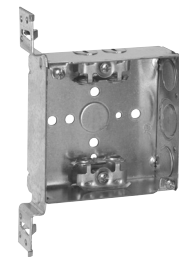
TP454MSB



TP454SSB



TP456



TP459

Cat. #	Bracket	Description	Knockouts		Fixture rated (weight lbs.)	Unit qty.	Wt. lbs. per 100
			Sides	Bottom			
TP459	"VMS"	Welded	4 - cable, 2 - ½", 1 - ½" + ¾" E	1 - ½"		25	89
TP454	-	Welded	4 - cable, 4 - ½", 2 - ½" + ¾" E	1 - ½"	50	50	81
TP454MSB	MSB	Welded	4 - cable, 4 - ½", 2 - ½" + ¾" E	1 - ½"		25	91
TP454SSB	SSB	Welded	4 - cable, 4 - ½", 2 - ½" + ¾" E	1 - ½"		25	82
TP456	"F", set flush	Welded	4 - cable, 2 - ½", 1 - ½" + ¾" E	1 - ½"		25	92

Ⓐ UL approved for use with aluminum interlocking grounding metal-clad cable, Type MCIA (Southwire MCAP™). MCAP™ is a registered trademark of Southwire Company.

Steel square boxes

4" SQUARE OUTLET BOXES – 30.3 CUBIC INCH CAPACITY

2 1/8" DEEP – FOR CONDUIT

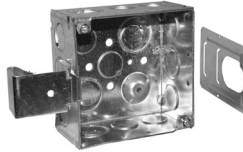
UL LISTED



TP403



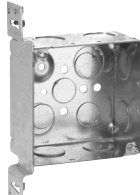
TP403MSB



TP403SSB



TP432



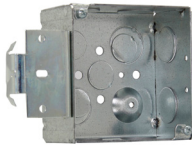
TP432VMS



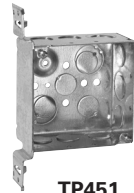
TP434



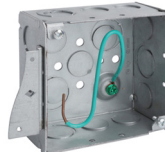
TP438/TP831[ⓑ]



TP432MSB



TP451



TP4HPF



TP4MPF



TP4MSBPF

Cat. #	Bracket	Description	Grounding method	Knockouts		Fixture rated (weight lbs.)	Unit qty.	Wt. lbs. per 100
				Sides	Bottom			
TP403 [ⓑ]	-	Welded	Ground bump	8 - 1/2", 4 - 1/2" + 3/4" E	2 - 1/2", 2 - 1/2" + 3/4" E	50	25	84
TP403BH [ⓑ]	-	Welded	Ground bump	8 - 1/2", 4 - 1/2" + 3/4" E	2 - 1/2", 2 - 1/2" + 3/4" E	50	25	84
TP403MSB	MSB	Welded	Ground bump	8 - 1/2", 4 - 1/2" + 3/4" E	2 - 1/2", 2 - 1/2" + 3/4" E	-	25	95
TP403SSB	SSB	Welded	Ground bump	8 - 1/2", 4 - 1/2" + 3/4" E	2 - 1/2", 2 - 1/2" + 3/4" E	-	25	95
TP432 [ⓑ]	-	Welded	Ground bump	8 - 3/4"	2 - 1/2", 2 - 1/2" + 3/4" E	50	25	84
TP432MSB	MSB	Welded	Ground bump	8 - 3/4"	2 - 1/2", 2 - 1/2" + 3/4" E	-	25	95
TP432VMS	"VMS"	Welded	Ground bump	6 - 3/4"	2 - 1/2", 2 - 1/2" + 3/4" E	-	25	99
TP436	-	Welded	Ground bump	8 - 1"	2 - 1/2", 2 - 1/2" + 3/4" E	50	25	84
TP436MSB	MSB	Welded	Ground bump	8 - 1"	2 - 1/2", 2 - 1/2" + 3/4" E	-	25	95
TP434 [ⓑ]	-	Drawn	Ground bump	8 - 1/2", 4 - 3/4"	3 - 1/2", 2 - 3/4"	50	25	84
TP438	-	Drawn	Ground bump	4 - 1/2", 6 - 1/2" + 3/4" C	3 - 1/2", 2 - 3/4"	-	25	84
TP451 [ⓑ]	"VMS"	Welded	Ground bump	6 - 1/2", 3 - 1/2" + 3/4" E	2 - 1/2", 2 - 1/2" + 3/4" E	-	25	96
TP437	"VP"	Welded	Ground bump	6 - 1/2", 3 - 1/2" + 3/4" E	2 - 1/2", 2 - 1/2" + 3/4" E	-	25	98
TP4H [ⓑ]	"S"	Welded	Ground bump	8 - 1/2", 4 - 1/2" + 3/4" E	2 - 1/2", 2 - 1/2" + 3/4" E	-	25	92
TP4MPF [ⓑ]	"S"	Welded	Ground bump	8 - 1/2", 4 - 1/2" + 3/4" E	2 - 1/2", 2 - 1/2" + 3/4" E	-	25	96
TP4MSB [ⓑ]	MSB	Welded	Ground bump	6 - 1/2", 3 - 1/2" + 3/4" E	2 - 1/2", 2 - 1/2" + 3/4" E	-	25	98
TP4CS [ⓑ]	-	Welded	Ground bump	8 - 1/2", 4 - 1/2" + 3/4" E	2 - 1/2", 2 - 1/2" + 3/4" E	-	25	88
Air Plenum								
TP831 [ⓑ]	-	Drawn	Ground bump	8 - 1/2", 4 - 3/4"	3 - 1/2", 2 - 3/4"	-	25	90

[ⓑ]For Air Plenum (no mounting holes) - not UL Listed.

[ⓐ]Available in painted options.

[ⓒ]UL Listed.

Steel boxes

Steel square boxes

4" SQUARE OUTLET BOXES – 30.3 CUBIC INCH CAPACITY

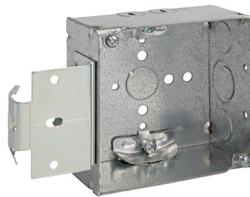
2 1/8" DEEP

FOR NON-METALLIC CABLE – CLAMPS IN EACH END

UL LISTED



TP450



TP450MSB



TP450SSB



TP452

Cat. #	Bracket	Description	Grounding method	Knockouts		Fixture rated (weight lbs.)	Unit qty.	Wt. lbs. per 100
				Sides	Bottom			
TP450	-	Welded	Ground bump	4 - cable, 4 - 1/2", 2 - 1/2" + 3/4" E	1 - 1/2"	50	25	90
TP450MSB	MSB	Welded	Ground bump	4 - cable, 4 - 1/2", 2 - 1/2" + 3/4" E	1 - 1/2"		25	101
TP450SSB	SSB	Welded	Ground bump	4 - cable, 4 - 1/2", 2 - 1/2" + 3/4" E	1 - 1/2"		25	101
TP452	"VMS"	Welded	Ground bump	4 - cable, 2 - 1/2", 1 - 1/2" + 3/4" E	1 - 1/2"		25	104

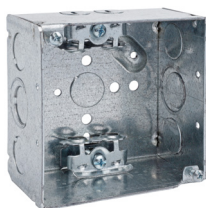
4" SQUARE OUTLET BOXES – 30.3 CUBIC INCH CAPACITY

2 1/8" DEEP

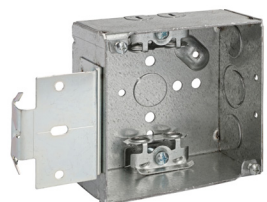
FOR ARMORED & METAL-CLAD (MCI) CABLE & HCF CABLE – CLAMPS IN EACH END

UL LISTED

Steel boxes



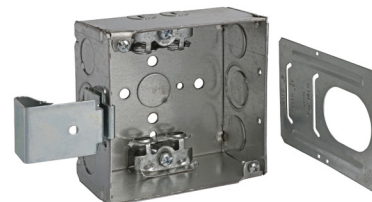
TP431



TP431MSB



TP431SSB



TP440

Cat. #	Bracket	Description	Grounding method	Knockouts		Fixture rated (weight lbs.)	Unit qty.	Wt. lbs. per 100
				Sides	Bottom			
TP431 ^A	-	Welded	Ground bump	4 - cable, 4 - 1/2", 2 - 1/2" & 3/4" E	1 - 1/2"	50	25	91
TP431MSB ^A	MSB	Welded	Ground bump	4 - cable, 4 - 1/2", 2 - 1/2" & 3/4" E	1 - 1/2"		25	91
TP431SSB ^A	SSB	Welded	Ground bump	4 - cable, 4 - 1/2", 2 - 1/2" & 3/4" E	1 - 1/2"		25	102
TP440 ^A	"VMS"	Welded	Ground bump	4 - cable, 2 - 1/2", 1 - 1/2" & 3/4" E	1 - 1/2"		25	103

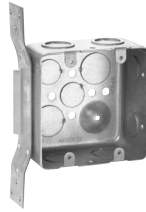
^AUL approved for use with aluminum interlocking grounding metal-clad cable, Type MCIA (Southwire MCAP™). MCAP™ is a registered trademark of Southwire Company.

Steel square boxes

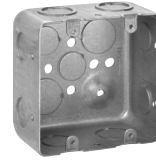
4" SQUARE TWO DEVICE BOXES – 30.3 CUBIC INCH CAPACITY

2 1/8" DEEP – FOR CONDUIT

UL LISTED



TP391



TP395

Cat. #	Bracket	Description	Grounding method	Knockouts		Unit qty.	Wt. lbs. per 100
				Sides	Bottom		
TP391	"VS", set 7/8"	Drawn	Ground bump	6 - 1/2", 3 - 3/4"	3 - 1/2", 2 - 3/4"	25	95
TP395	-	Drawn	Ground bump	8 - 1/2", 4 - 3/4"	3 - 1/2", 2 - 3/4"	25	84

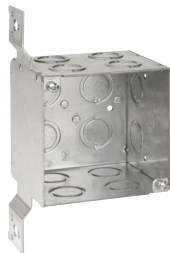
4" SQUARE OUTLET BOXES – 50.0 CUBIC INCH CAPACITY

3 1/2" DEEP – FOR CONDUIT

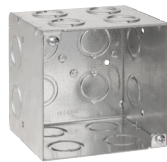
UL LISTED, FILE NO. E-15022

Applications:

- 4" square, 3 1/2" deep outlet boxes are ideal for applications requiring increased capacity, including the installation of speaker boxes, fire alarms, strobes, security cameras and other oversized devices
- For use with rigid/IMC and EMT conduit



TP411



TP413

Cat. #	Bracket	Description	Grounding method	Knockouts		Unit qty.	Wt. lbs. per 100
				Sides	Bottom		
TP411 ^P	"S"	Welded	Tapped hole	10 - 1/2" + 3/4" C	4 - 1/2" + 3/4" C	10	138
TP413 ^P	-	Welded	Ground bump	8 - 1/2" + 3/4" C, 4 - 3/4", 4 - 1"	2 - 1/2" + 2 - 3/4"	10	113

^PAvailable in painted options.

Steel square covers

4" SQUARE EXTENSION RINGS

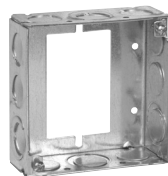
1 1/2" DEEP WITH CONDUIT KNOCKOUTS – 21.0 CUBIC INCH CAPACITY

2 1/8" DEEP WITH CONDUIT KNOCKOUTS – 30.3 CUBIC INCH CAPACITY

UL LISTED



TP424



TP422



TP426



TP443



TP428, TP833

Cat. #	Description	Knockouts		Unit qty.	Wt. lbs. per 100
		Sides	Bottom		
1 1/2" deep					
TP424	Drawn	12 - 1/2"	-	50	46
TP426	Drawn	8 - 3/4"	-	50	38
TP428	Drawn	8 - 1/2", 4 - 3/4"	-	50	46
TP53151-S	Welded	6 - 1/2", 4 - 1/2" + 3/4" C	-	50	38
TP833	Drawn	8 - 1/2", 4 - 3/4"	-	50	48
2 1/8" deep					
TP443	Drawn	8 - 1/2", 4 - 3/4"	-	25	66
TP465	Drawn	8 - 1"	-	25	60
TP53171-S	Welded	6 - 1/2", 4 - 1/2" + 3/4" C	-	25	70
1 1/2" deep switch & masonry box extension ring					
TP422	Welded	8 - 1/2", 4 - 1/2" + 3/4" E	-	50	50

Ⓟ For air plenum (no mounting holes). Requires the use of TP854; purchase separately - not UL Listed.

Ⓡ For use as extension with switch box, not four square box.

Ⓢ CSA certified.

Steel boxes

FLEXIBLE FIXTURE HANGERS

Square flexible fixture hangers are used in commercial or light industrial applications where HID high bay and low bay lighting fixtures are used.

Specific applications include storage facilities, shipping warehouses, retail and DIY facilities.

Features:

- Suitable for use with 1/2" or 3/4" fixture conduit stems, these hangers allow the conduit stem of the fixture (luminaire) to swing in any direction;

Cat. #	Swing angle from vertical
TPSFH12	26°
TPSC-5075HF	20°

- Available for attachment to 4" square steel boxes
- Quickly and easily attached by two screws
- Hangers are drilled and tapped for use with 3/4" conduit stem as standard and come supplied with a 3/4" - 1/2" reducer for 1/2" conduit stem applications
- Hinged door on TPSC-5075HF allows for hands-free wiring

Certifications and compliances:

- UL1598
- CSA C22.2 No. 250
- Suitable for damp locations

Standard materials and finishes:

- Material – sheet steel
- Finish – plated for corrosion resistance



Cat. #	Description	Support Wt. (lbs.)
TPSFH12	For use with 4" square boxes	50
TPSC-5075HF	For use with 4" square boxes, hands free	75

Rating is based on the rating of the outlet box on which it is mounted to.

Steel square covers

COVERS FOR 4" SQUARE BOXES – CUBIC INCH CAPACITY (SEE BELOW)

UL LISTED

#8-32 screw used on covers



TP472

TP474

TP478

TP473, TP475, TP476,
TP477, TP479, TP483

TP850

TP854

AMR0

Cat. #	Description	Unit qty.	Wt. lbs. per 100	Capacity cu. in.
TP472 ^H ^P	Flat blank	50	31	-
TP474 ^H	Flat, open with ears 2 ³ / ₄ "	50	21	-
TP478 ^H ^P	Flat, with 1/2" KO	50	31	-
TP487 ^H	Flat, with 3/4" KO	50	29	-
TP473 ^H	Raised 1/4", open with ears 2 ³ / ₄ "	50	23	1.3
TP476 ^H	Raised 1/2", open with ears 2 ³ / ₄ "	50	26	4.0
TP477 ^H ^P	Raised 5/8", open with ears 2 ³ / ₄ "	50	27	5.0
TP475 ^H	Raised 3/4", open with ears 2 ³ / ₄ "	25	31	6.0
TP479 ^H	Raised 1", open with ears 2 ³ / ₄ "	25	34	7.0
TP483 ^C ^H	Raised 1 1/4", open with ears 2 ³ / ₄ "	25	31	9.5
AMR0 ^L	3/4" - 1 1/2" round adjustable mud ring	25	44	6.1

Air Plenum

TP850 ^B	Flat blank gasketed with captive screws	25	31	-
TP854 ^B	Flat ring double gasketed	25	12	-

^B For air plenum (no mounting holes) - not UL Listed.

^C cUL Listed.

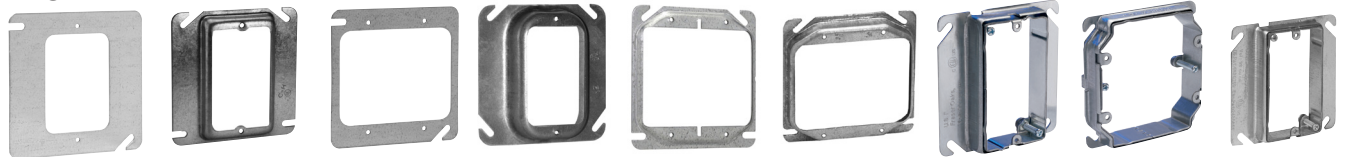
^L ETL listed.

^H CSA certified.

^P Available in painted options.

MUD RINGS FOR 4" SQUARE STEEL OUTLET BOXES

UL LISTED



TP480

TP482, TP484,
TP486, TP489

TP494

TP488, TP490

TP496

TP501, TP502

AMR1

AMR2

AMR158

Cat. #	Description	Unit qty.	Wt. lbs. per 100	Capacity cu. in.
One Device				
TP480 ^H	Flat	50	20	-
TP482 ^H	1/4" raised	50	21	1.8
TP484 ^H ^P	1/2" raised	50	23	3.8
TP489 ^H ^P	5/8" raised	50	26	4.3
TP486 ^H ^P	3/4" raised	50	30	5.5
TP488 ^H	1" raised	50	34	6.8
TP490 ^H	1 1/4" raised	25	39	8.5
AMR1 ^C	3/4" - 1 1/2" raised adjustable	25	47	-
AMR158 ^C	5/8" - 1 1/4" raised adjustable	25	44	6.0
Two Device				
TP494 ^H	Flat	50	12	-
TP496 ^H ^K	1/4" raised	50	13	3.0
TP498 ^H ^K	1/2" raised	50	18	6.0
TP499 ^H ^K	5/8" raised	50	22	8.0
TP500 ^H ^K	3/4" raised	50	24	9.0
TP501 ^H	1 1/4" raised	25	31	14.0
TP502 ^H	1" raised	25	30	11.7
AMR2 ^C	5/8" - 1 1/2" raised adjustable	25	50	11.3

^C cUL Listed.

^H CSA certified.

^K Slotted design for use with 4" square box partitions.

^P Available in painted options.

Steel square covers

4" SQUARE SURFACE COVERS – 5.5 CUBIC INCH CAPACITY

RAISED 1/2"

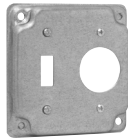
UL LISTED

CSA LISTED

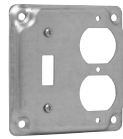
Screw(s) provided in raised cover kit are for use with the center hole on duplex receptacles. Nuts that are provided in kit are to be used in conjunction with the screws that are provided as standard packaging with devices to mount device to raised cover. For GFCI device installation, no screw is needed; please disregard.



TP503



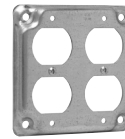
TP504



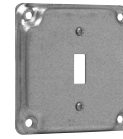
TP506



TP508



TP510



TP512



TP507, TP514,
TP519



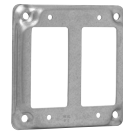
TP516



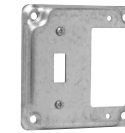
TP509 (4 screws),
TP518 (2 screws)



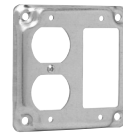
TP513



TP511



TP515



TP517

Cat. #	Description	Unit qty.	Wt. lbs. per 100
TP503	Raised blank	50	35
TP504	For one toggle switch and one single receptacle 1 ¹³ / ₃₂ " (1.406) dia.	50	31
TP506	For one toggle switch and one duplex receptacle	50	31
TP508	For two toggle switches	50	35
TP510	For two duplex receptacles	50	26
TP512	For one toggle switch	50	35
TP507	For one single receptacle 1 ¹⁹ / ₃₂ " (1.594) dia.	50	37
TP514	For one single receptacle 1 ¹³ / ₃₂ " (1.406) dia.	50	34
TP519	For one power outlet 1 ²³ / ₃₂ " (1.719) dia.	50	37
TP516	For one duplex receptacle	50	31
TP509	For one power outlet 2 ⁷ / ₁₆ " (2.438) dia.	50	23
TP518	For one power outlet 2 ³ / ₁₆ " (2.141) dia.	50	34
TP513	For one GFCI receptacle	50	31
TP511	For two GFCI receptacles	50	26
TP515	For one toggle switch and one GFCI receptacle	50	31
TP517	For one duplex receptacle and one GFCI receptacle	50	26

Steel square covers

UNI-MOUNT™ COVERS

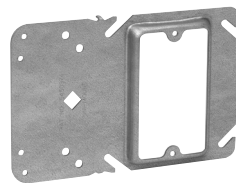
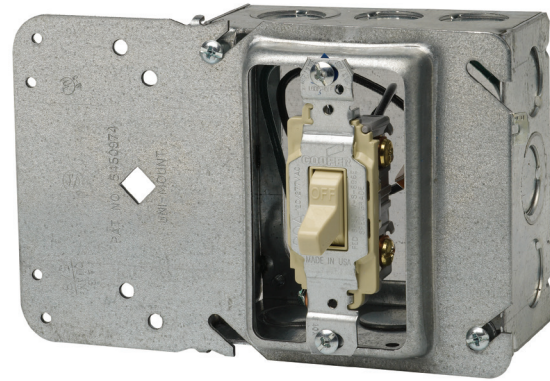
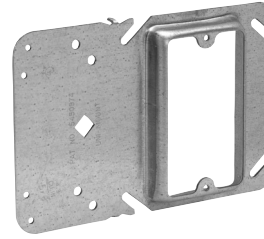
The Uni-Mount combines the features of a mounting device plate with those of a box support, giving you one universal plate for all of your needs. Specifically designed for use with metal or wood studs:

The new and improved version incorporates four small holes on the left side (support side) of the bracket. These holes allow for the attachment of box mounting brackets to allow for use of both sides of the stud. The holes are strategically located to accept either the Eaton's B-Line Series BB423 bracket or the Caddy H23 bracket. Additionally, the viewing hole has been significantly enlarged (and is now diamond shaped) to make it even easier to find mark lines on the stud.

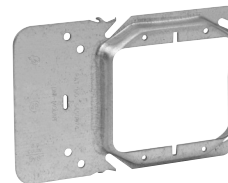
Features:

- Guide tabs ensure consistent alignment on stud
- Stud alignment hole ensures consistent mounting height
- Rigid bracket design eliminates the need for far side support
- Available as a single or two device cover
- Universal design fits all 4" square boxes
- Available in 1/2", 5/8" and 3/4" raised
- Can be ordered pre-assembled to popular 4" square boxes
- Fast and easy installation
- Can be used in multiple applications, resulting in less items to stock
- Less labor intensive
- Less material handling
- No multiple assemblies to handle
- Can be used in Class II communications outlets for low voltage without a box
- UL Listed and CSA certified^L
- UL File No. E-23156

^LCSA requires a far side support.



Single gang



Two gang

Steel boxes

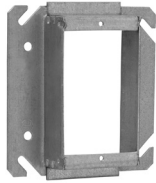
Cat. #	Description	Capacity cu. in.	Unit qty.	Wt. lbs. per 100
Single Gang				
TP30000	1/2" raised	3.8	50	43
TP31000	5/8" raised	4.3	50	46
TP32000	3/4" raised	5.5	50	50
Two Gang				
TP35000	1/2" raised	6.0	50	38
TP36000	5/8" raised	8.0	50	52
TP37000	3/4" raised	9.0	50	54
Low profile screws – reduces risk of sheetrock bulge				
TP710	L.P. screws	-	1000	0.5

Steel square covers

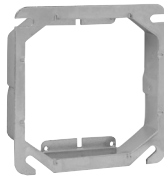
TILE WALL COVERS FOR 4" SQUARE BOXES – CUBIC INCH CAPACITY (SEE BELOW)

UL LISTED

CSA LISTED



TP524



TP534



TP540

Applications:

- Typically used with tile or brick

Features:

- Rounded corners help guide cuts around devices

Cat. #	Description	Capacity cu. in.	Unit qty.	Wt. lbs. per 100
One device				
TP520	1/2" raised	3.7	50	30
TP522	3/4" raised	5.5	50	36
TP524	1" raised	7.4	50	40
TP526	1 1/4" raised	9.3	25	46
TP528	1 1/2" raised	11.0	25	50
TP530	2" Raised	14.8	25	62
Two device				
TP532	1/2" raised	5.0	10	24
TP534	3/4" raised	7.8	10	30
TP536	1" raised	10.3	10	36
TP538	1 1/4" raised	13.0	10	44
TP540	1 1/2" raised	15.5	10	50
TP542	2" raised	20.8	10	66

Steel boxes

4" SQUARE BOX PARTITIONS



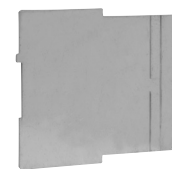
TP860



TP861



TP862



TP863

Cat. #	Description	Unit qty.	Wt. lbs. per 100
For 1 1/2" deep box with square cut tile wall two gang covers			
TP860	For 1/2", 3/4", 1" raised covers	25	13
TP861	For 1 1/4", 1 1/2", 2" raised covers	25	18
For 2 1/8" deep box with square cut tile wall two gang covers			
TP862	For 1/2", 3/4", 1" raised covers	25	16
TP863	For 1 1/4", 1 1/2", 2" raised covers	25	21