



LEARNING • INTEGRITY • FELLOWSHIP • EXCELLENCE

WHANGANUI HIGH SCHOOL

www.whanganuihigh.school.nz

IMPORTANT
DATES

Friday 3 July
End of Term Two

Monday 20 July
Term Three Begins



LIFE AS A YEAR 9 STUDENT

New students and their whānau often ask “What is life like at Whanganui High School?”. We interviewed eight of our Year 9 students to seek answers from their perspective.

An average day at Whanganui High School is always exciting. I have enjoyed going into different classes and meeting new people. There is such a variety of subjects that are offered, you can always do things you like. You can participate in so many sports and other activities.

The teachers and senior students are welcoming and are always there for students. Try and make a lot of new friends and join in and find what your passion is whilst you are at Whanganui High School.

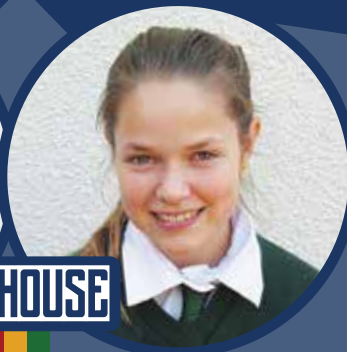
ALLAN THONGSKUL

*Attended Year 8 at
Whanganui Intermediate School*



ZOE BULLOCK

*Attended Year 8 at
Whanganui Intermediate School*



AWA HOUSE

No day at Whanganui High School is ever the same. In Year 9, students take most subjects to see which ones you like, so you will not feel pressured to select a subject in subsequent years without knowing what it is like.

I have been involved with the swim team, competing at Inter-school competitions. The most exciting team for me has been the Acro team. All gymnasts and dancers are welcome. Being part of a school team is so much fun because I have met so many new people. School soon becomes your home. If an opportunity comes up, do not be afraid to sign up for it. You will not regret choosing Whanganui High School, as it is an amazing school. It has lovely staff and students.

A typical day at Whanganui High School is fun and exciting. You feel welcomed and there is enthusiasm to learn new things. I feel like I can do more here than any other school. There is something for everyone to get involved in, from football to motocross and language to dance. Everyone gets to do something they like.

The older students have helped me get around the school whenever I needed help or when I was lost. The staff and school leaders are super friendly and always available. What I like best about coming to Whanganui High School is that there are so many choices of subjects and activities to get involved in.

FLYNN GILBERTSON-SMALL

*Attended Year 8 at
St George's School*



OLIVIA TORRIE

*Attended Year 8 at
Whanganui Intermediate School*



MAUNGA HOUSE

What I have enjoyed the most about my experience at Whanganui High School is that I found it easy to make new friends and all the students and staff were very welcoming and friendly. There are always new possibilities, with lots to learn and achieve. There are a wide variety of events to suit your talents.

I have found that there is a lot of walking around the school site as the campus is quite large in size. I have had to get used to having classes that are on opposite sides of the school.

The teachers are great and there are fun House competitions. You will meet amazing people at Whanganui High School and you will make lots of new friends.

There is always a wide variety of events to get involved in throughout the day and lots of extra-curricular activities on offer. Being in a mixed Year level Form Class has been valuable as it has a range of different year levels of students. Direction from the senior students and them sharing their experiences has helped boost my confidence. I find the other students are very accepting and non-judgmental and that students mix well together.

Challenge yourself, and get involved in as many activities as you can. I am proud to say that Whanganui High School feels like one big family.

MALACHI TANGIRA

*Attended Year 8 at
Whanganui Intermediate School*



ANOUK VAN DER JAGT

*Attended Year 8 at
Westmere School*



MOANA HOUSE

We arrive at school before the first bell at 8.40am. This gives time for a quick catch up with our friends. Then we head to Form class for 20 minutes. We attend two classes. We then have our first break which consists of 45 minutes. We then go to two more classes. We then have our shorter break of 20 minutes, before heading to our last class, with school finishing at 3.05pm. We have a slightly different structure on Friday.

I found that it was a very easy transition to Whanganui High School because all the students and teachers were very welcoming. Whanganui High School has so many opportunities in sporting and cultural as well as other extra-curricular areas. The teachers are always ready to help whenever you need it.

Our timetable is structured so that we start the day off with Form class, where our Form teacher lets students know important information about each day. The day is broken into five subject periods. All Year 9 students study English, mathematics, science, social studies, physical education & health, languages and digital technology. The option subjects are fun and exciting, and let you explore languages, arts and technology.

It is great having a mixed Year level Form class, where I get to mingle with older students who are very helpful with new students and always happy to share information.

I urge you to try new things and get involved in activities like I have.

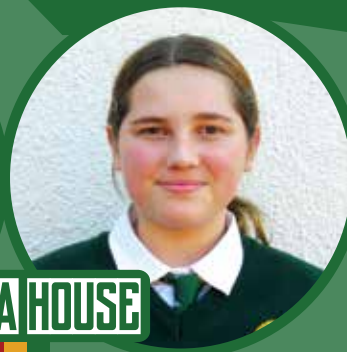
DILAN GULAB

*Attended Year 8 at
Whanganui Intermediate School*



TRINITY BOSWELL

*Attended Year 8 at
St Mary's School*



WHENUA HOUSE

I love the variety of subjects I get to choose from and learn about every day. The teachers are welcoming and the older students are always happy to lend a helping hand. I feel like I can explore my performing arts passion here at Whanganui High School. I have enjoyed learning unique and beautiful languages like Chinese, French, Māori and Spanish.

The staff and leaders of Whanganui High School made sure we felt welcomed and at ease. The amazing and inclusive House leaders are always enthusiastic and encouraging. The kind teachers and deans are always working hard to create a safe and enjoyable environment. I have made so many new friends this year and I cannot wait for our friendships to flourish and grow.

ENROLMENTS

2021

APPLICATIONS SHOULD IDEALLY BE RECEIVED
BY THE SCHOOL NO LATER THAN
4.00PM ON FRIDAY 3 JULY, 2020

Martin McAllen, Principal, Whanganui High School

General Enquiries: (06) 349-0178 Attendance: (06) 349-0177 International Enquiries: +64-6-349-1181