



LEARNING • INTEGRITY • FELLOWSHIP • EXCELLENCE

# WHANGANUI HIGH SCHOOL

www.whanganuihigh.school.nz

## IMPORTANT DATES

**Wednesday 2 June**

Inter school Moderation  
Students will be released at 1.50pm

**Monday 7 June**

Queen's Birthday Holiday

**Monday 21 June – Friday 9 July**

School Tours running for 2022 intake

## LIFE AS A YEAR 9 STUDENT

New students and their whānau often ask “What is life like at Whanganui High School?”. We interviewed eight of our Year 9 students to seek answers from their perspective.

The best aspect about Whanganui High School is the impressively wide variety of opportunities and events offered to students. Whanganui High School is based on the LIFE values of: Learning, Integrity, Fellowship and Excellence, which senior students and staff consistently present to new students throughout the year. The staff members have created a safe learning environment for students to recognise our potential. I encourage you to get involved in the endless amount of possibilities because it is all here at Whanganui High School.



**AWA HOUSE**

**CRISTIAN KIRIONA**

*Attended Year 8 at Faith City School*



**CIARA BARLOW**

*Attended Year 8 at Upokongaro School*

A typical day is not the same as you would find at other schools. You have a packed day, full of exciting subjects with a different teacher every period. One of the best things is the students and teachers. A few of my favourite activities this year have been Kapa haka, Te Reo Māori, Art, Touch Rugby and Netball. These have allowed me to learn new things. One thing I found helpful when transitioning from my old school to Whanganui High School was how welcoming and friendly the school is. My advice to a new student coming into our school would be to take every opportunity the school offers you.

A typical day in Year 9 is exciting, knowing that every day we have a different schedule. There are a large variety of subjects and topics here at Whanganui High School. There are so many different opportunities on offer. Whanganui High School is a place where you can strive for greatness, and there are no barriers limiting what you can achieve. At first I was cautious about how big the school is, but everyone welcomed me and helped me to settle in.



**MAUNGA HOUSE**

**RAMONE SARUP**

*Attended Year 8 at St Mary's School*



**SAFFRON CROOK**

*Attended Year 8 at St George's School*

What I love the most about Whanganui High School is the amount of opportunities that are presented for you. I have been involved in a range of cultural activities including; the school production 'Mamma Mia!' as well as being in the school's choir. Alongside the cultural activities on offer, there are a wide variety of sport and service opportunities available. If you have any issues (big or small), the students and teachers are nice, friendly and always ready to help you.

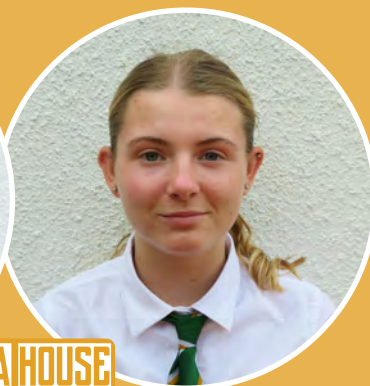
A typical day at Whanganui High School is that you begin the day in 'Form Class' which is similar to a home room. After Form Class there are five periods of subjects in the day. Students have compulsory subjects such as English, Mathematics, Science, Social Studies, Physical Education & Health, Languages and Digital Technology. There are also subjects that you choose from such as Art, Dance, Drama, Music, Design & Visual Communication, Food & Nutrition, Materials Technology and Textiles. There are four different Houses that students are assigned into with a competitive House spirit between them.



**MOANA HOUSE**

**TAIKO EDWARDS-HARURU**

*Attended Year 8 at Whanganui Intermediate School*



**EMILY HUTCHINS**

*Attended Year 8 at St Mary's School*

An average day at Whanganui High School is always exciting and different. I am really enjoying the sports that Whanganui High School has to offer. I am involved in Athletics, Badminton, Football, and Netball. All the teachers have been warm and welcoming. The senior students have set a great example for new students, and are very helpful in showing students where to go and what to do. I highly recommend coming to Whanganui High School because of the variety on offer, and because everyone has been so welcoming. It is made to feel like we are one big family.

Changing schools may seem daunting, but Whanganui High School has so much to offer and is a great choice for secondary school. I have had a great experience. The teachers have been welcoming and the classes have been challenging. The school has so many cultural and sporting activities on offer, and being a part of them has been incredible. We also have competitions between our school Houses in Athletics, Cross Country and Swimming, and even a Quiz Night. Those are a blast and fun to go to even if you aren't the best at it. All the subjects are great and my favourite part has been being with my friends, along with making new friends.



**WHENUA HOUSE**

**CORBIN EISEMAN**

*Attended Year 8 at Whanganui Intermediate School*



**NEVAEH BLAKE**

*Attended Year 8 at Whanganui Intermediate School*

The first few days were all about getting to know my teachers, making friends and learning about the school. The senior students were very welcoming and supportive. I was placed in a Whānau Form Class which made transitioning comfortable. There is a Whānau Form Class available in each House, which is a form class where Māori students can develop their identity and sense of community. I have taken up many opportunities, especially in sports where I participated in the Inter-House competitions which was fun. I believe that my time at school is the time to develop my skills and passions, take steps towards my future goals, and to grow and extend my learning.

# ENROLMENTS 2022

See the school in normal daily action during our school tours which will be running from Monday 21 June until Friday 9 July. Session times will be advertised in early June. 2022 Enrolment application packs will be issued to contributing schools from 8th June onwards. Applications should ideally be received by the school no later than 4.00pm on Friday 9 July.

*Martin McAllen, Principal, Whanganui High School*

General Enquiries: (06) 349-0178 Attendance: (06) 349-0177 International Enquiries: +64-6-349-1181