

Future Focus Assembly Slides

YEAR 10 into YEAR 11

2025 Year 11

Whanganui High School



THIS WAY



THAT WAY

DOs and DON'Ts

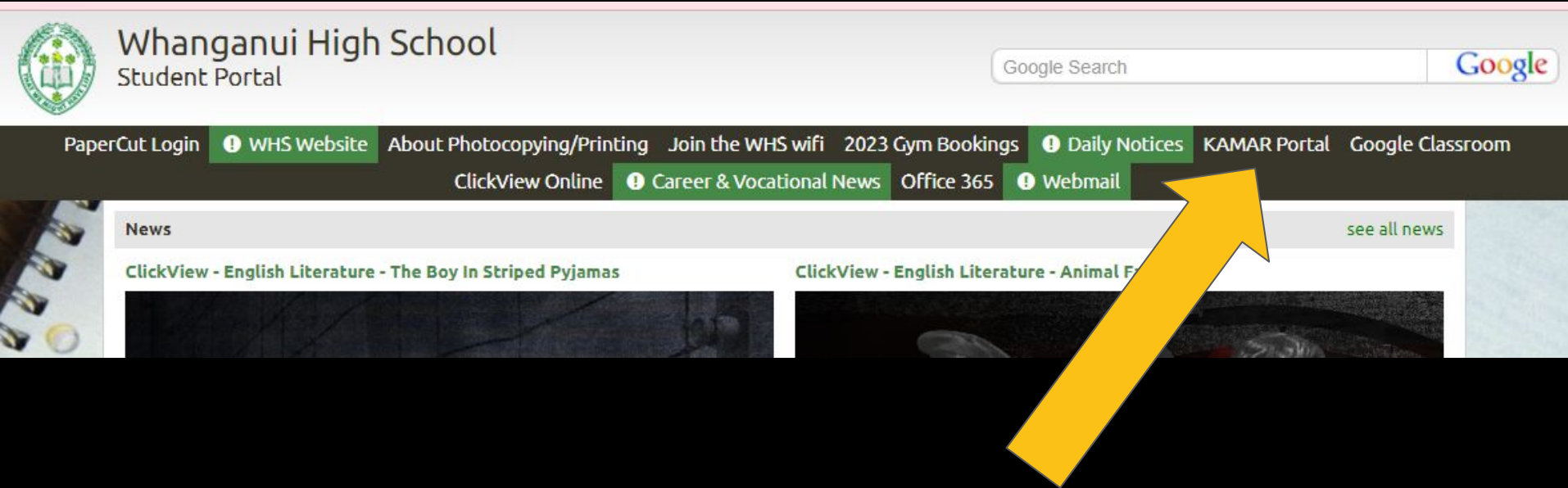
DO

- DO** ask questions
- DO** talk to teachers
- DO** talk to senior students
- DO** think about areas you may be interested in later
- DO** think about what you are good at
- DO** talk to your parents / caregivers

DON'T

- DON'T** choose subjects just because your friend is taking them
- DON'T** choose a subject just because you 'like the teacher'
- DON'T** choose a subject you've consistently struggled with
- DON'T** fill in the subject choice form until you have had your library session

Log into KAMAR (from the student Portal)



The screenshot shows the Whanganui High School Student Portal. At the top left is the school's crest. To its right is the text "Whanganui High School" and "Student Portal". On the top right is a "Google Search" bar with the Google logo. Below this is a horizontal menu with several links: "PaperCut Login", "WHS Website" (highlighted in green), "About Photocopying/Printing", "Join the WHS wifi", "2023 Gym Bookings", "Daily Notices" (highlighted in green), "KAMAR Portal", and "Google Classroom". Below the menu is a "News" section with two articles: "ClickView - English Literature - The Boy In Striped Pyjamas" and "ClickView - English Literature - Animal Farm". A large yellow arrow points from the bottom right towards the "KAMAR Portal" link in the menu.

Whanganui High School
Student Portal

Google Search

PaperCut Login WHS Website About Photocopying/Printing Join the WHS wifi 2023 Gym Bookings Daily Notices KAMAR Portal Google Classroom

ClickView Online Career & Vocational News Office 365 Webmail

News see all news

ClickView - English Literature - The Boy In Striped Pyjamas

ClickView - English Literature - Animal Farm

Sign in with your student username and password



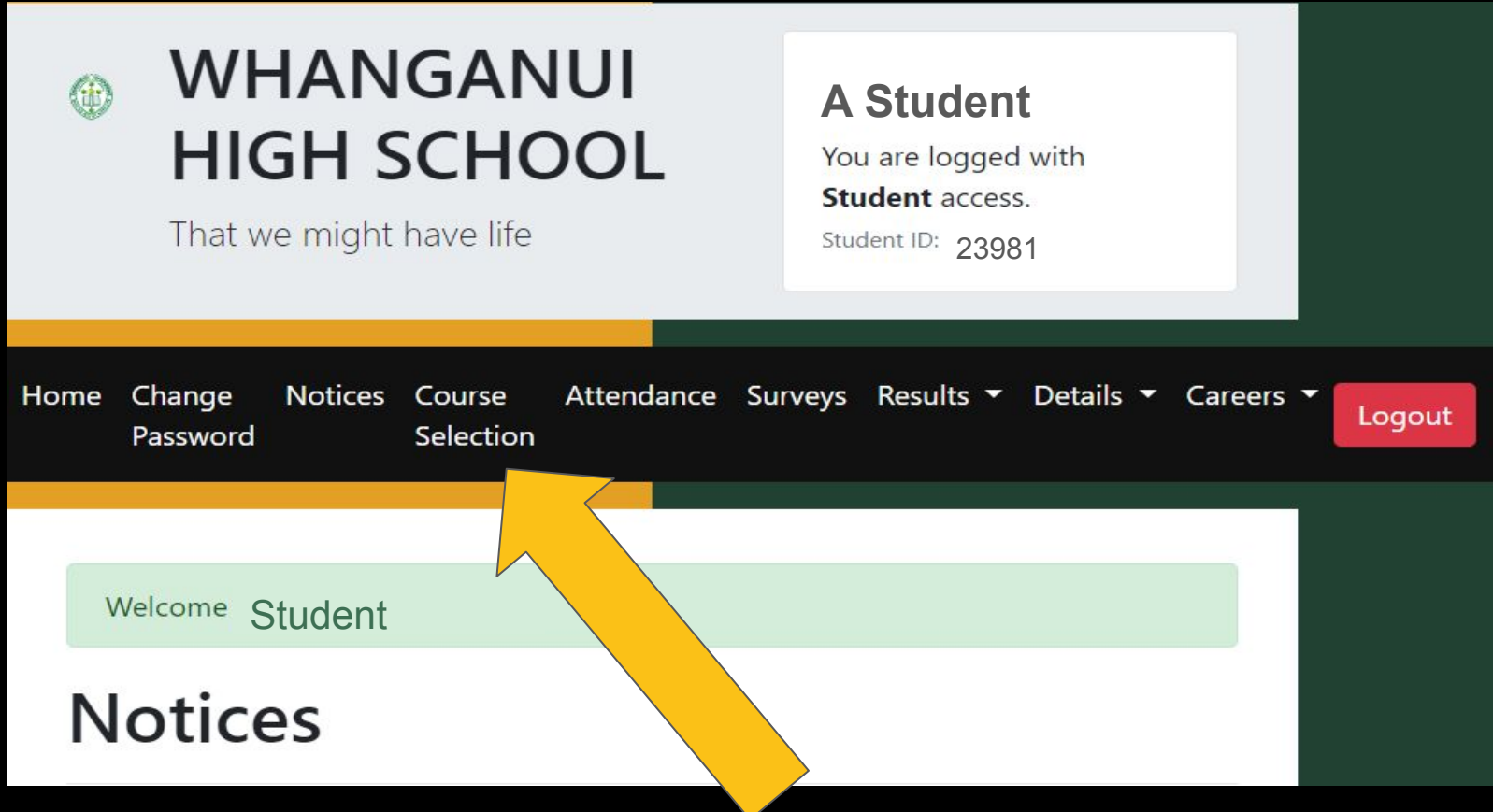
WHANGANUI HIGH SCHOOL

That we might have life

USERNAME: *

PASSWORD: *

Click on Course Selection



The screenshot shows the Whanganui High School website. The header features the school's logo, name, and tagline. A student login box is present in the top right. The navigation bar contains links to Home, Change Password, Notices, Course Selection, Attendance, Surveys, Results, Details, Careers, and a Logout button. A yellow arrow points to the 'Course Selection' link. Below the navigation bar, a 'Welcome Student' message is displayed, followed by a 'Notices' section.

WHANGANUI HIGH SCHOOL
That we might have life

A Student
You are logged with **Student** access.
Student ID: 23981

Home Change Password Notices Course Selection Attendance Surveys Results ▾ Details ▾ Careers ▾ Logout

Welcome Student

Notices

Scroll to see all the courses available

[Home](#)
[Change Password](#)
[Notices](#)
[Course Selection](#)
[Attendance](#)
[Surveys](#)
[Results](#)
[Details](#)
[Careers](#)
[Logout](#)

Course Selection

Course Selection for 2025 Subjects

Please select 3 SUBJECTS plus MATHS SCIENCE and ENGLISH. As Mathematics, Science and English are compulsory, the correct class (ENEE, ENG1, ENI1, ENX1) for these will be determined by your SCHOOL EXAM results and you will be placed accordingly.

If you are selecting PROGRESSIVE classes you MUST select all 4 Progressive (PDL1, PCL1, PFL1, PLS1) classes and 2 other option subjects

Note: As always there will be clashes, so please pick an additional subject (ALTERNATE) subject just in case it is required.

If you feel you should be able to select a course above/below your year level, you will need to speak with Mr Turner individually.

Course	1	2	3	4	5	6	Alternate
English							
English (ENG1)	X						X
Progressive							
Progressive Communication Skills (PCL1)	X						X
Progressive Financial Literacy & Mathematics (PFL1)		X					X
Progressive Life Skills (PLS1)			X				X
Progressive Digital Literacy (PDL1)				X			X
Mathematics							
Mathematics (MAG1)		X					X
Cambridge Extended Mathematics 1 (MCA1)				X			X
Sciences							
Science (SCG1)			X				X
Technology							
Automotive Engineering (AUT1)				X	X	X	X
Building and Construction (BAC1)				X	X	X	X
Design and Visual Communication (DVC1)				X	X	X	X
Food and Nutrition (FDH1)				X	X	X	X
Fashion Design (FDZ1)				X	X	X	X
Technology Engineering (TCE1)				X	X	X	X
Technology (TEC1)				X	X	X	X
Arts							
Art Digital Focus (ADF1)				X	X	X	X
Art (ART1)				X	X	X	X
Dance (DAN1)				X	X	X	X

Preview Selection

Save

If you feel you should be able to select a course above/below your year level, you will need to speak with Mr Turner individually.

Course	1	2	3	4	5	6	Alternate
English							
English (ENG1)	X						X
Progressive							
Progressive Communication Skills (PCL1)	X						X
Progressive Financial Literacy & Mathematics (PFL1)		X					X
Progressive Life Skills (PLS1)			X				X
Progressive Digital Literacy (PDL1)				X			X
Mathematics							
Mathematics (MAG1)		X					X
Cambridge Extended Mathematics 1 (MCA1)				X			X
Sciences							
Science (SCG1)			X				X
Technology							
Automotive Engineering (AUT1)				X	X	X	X
Building and Construction (BAC1)				X	X	X	X
Design and Visual Communication (DVC1)				X	X	X	X
Food and Nutrition (FDH1)				X	X	X	X
Fashion Design (FDZ1)				X	X	X	X
Technology Engineering (TCE1)				X	X	X	X
Technology (TEC1)				X	X	X	X
Arts							
Art Digital Focus (ADF1)				X	X	X	X
Art (ART1)				X	X	X	X
Dance (DAN1)				X	X	X	X

Preview Selection

Save

Select ONE subject in EACH column

Subject	Column 1	Column 2	Column 3	Column 4	Column 5	Column 6	Column 7
Science (SCS)			✓				✗
Technology							
Automation Engineering (AUT)				✗	✗	✗	✗
Building and Construction (BCT)				✗	✗	✗	✗
Design and Visual Communication (DVC)				✗	✗	✗	✗
Road and Transport (RMT)				✗	✗	✓	✗
Software Design (SDT)				✗	✗	✗	✗
Technology Engineering (TEC)				✗	✗	✗	✗
Technology (TBC)				✗	✗	✗	✗
Arts							
Art Digital Focus (ADF)				✗	✗	✗	✗
Art (ART)				✗	✓	✗	✗
Dance (DAN)				✗	✗	✗	✗
Drama (DRA)				✗	✗	✗	✗
Music (MUS)				✗	✗	✗	✗
Languages							
Chinese (CHN)				✗	✗	✗	✗
French (FRE)				✗	✗	✗	✗
Te Reo Māori (MAG)				✗	✗	✗	✗
Spanish (SPA)				✗	✗	✗	✗
Physical Education & Health							
Health (HEH)				✗	✗	✗	✗
Outdoor Adventure Skills (OAS)				✗	✗	✗	✗
Physical Education (PED)				✗	✗	✗	✗
International							
International English Communication (IEC)				✗	✗	✗	✗
International English Language (IEL)				✗	✗	✗	✗
International English (IEI)				✗	✗	✗	✗
Digital Technologies							
Digital Technologies (DTA)				✓			✗
Social Sciences							
Business Studies (BUS)				✗	✗	✗	✗
Geography (GEO)				✗	✗	✗	✓
History (HIS)				✗	✗	✗	✗

Subject	Column 1	Column 2	Column 3	Column 4	Column 5	Column 6	Column 7
			✓				✗
			✓	✗	✗	✗	✗
			✗	✗	✗	✗	✗
			✗	✗	✗	✗	✗
			✗	✗	✓	✗	✗
			✗	✓	✗	✗	✗
			✗	✗	✗	✗	✗
			✗	✗	✗	✗	✓

Click on Preview Selection at the Bottom of the page

Subject Confirmation

×

Please confirm your course selection:

- 1: **English - ENG1**
- 2: **Mathematics - MAG1**
- 3: **Science - SCG1**
- 6: **Food and Nutrition - FDH1**
- 5: **Art - ART1**
- 4: **Digital Technologies - DTG1**
- Alternate: **Geography - GEO1**

Confirm Selection

Close

Click Confirm Selection

or

Click Close *to choose different subjects*

All this information and more can
be found on the student pages

Accessed via the
GOOGLE WHS BOOKMARKS

or

bit.ly/whsstudentpages
(whs student pages)

About the subjects



PE, Health & Outdoor Ed

PEDI : PHYSICAL EDUCATION (20 credits)

Entry requirements:

Active involvement in Year 10 PE
and reliably wore correct PE gear.



What do we learn about:

Ki-O-Rahi (assessed on playing skills & self evaluations)

Volleyball (assessed on leadership, responsibility & fair play)

Basketball (assessed on how the human body functions)

Recreation & Leisure Activities (assessed on participation & reflection)

PE, Health & Outdoor Ed

HLTI : HEALTH (15 credits)

Entry requirements:

Open mind, works well with others, literacy skills, positive attitude

What do we learn about:

Drugs
Alcohol
Sexuality
Goal Setting
Coping with Change



PE, Health & Outdoor Ed

OASI : OUTDOOR EDUCATION (18 credits)

Entry requirements:

Active involvement in Year 10 PE and have an interest in the outdoors

What do we learn about:

- Abseiling
- Kayaking
- Mountain Biking
- Tramping
- Caving
- Rafting
- Orienteering





ENGLISH

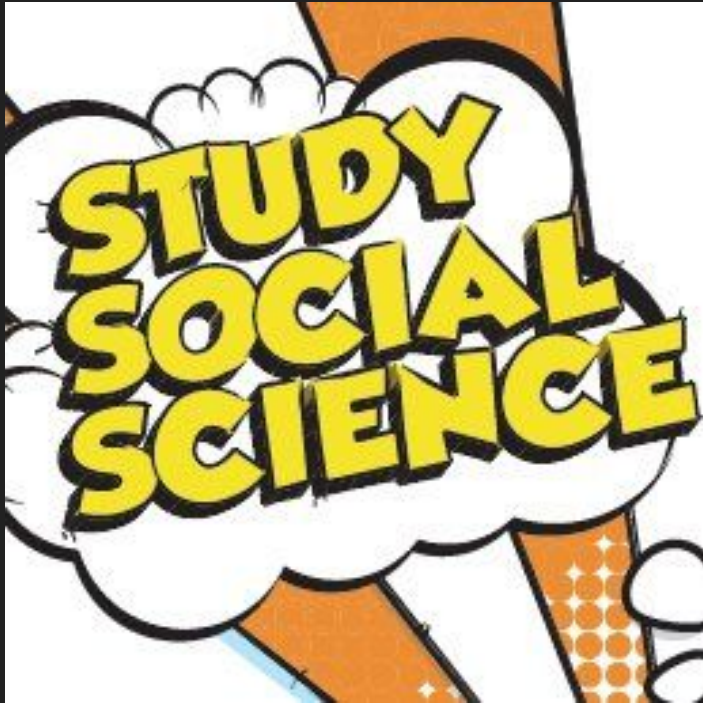
Teacher recommendations:

ENIO → Pathways or ENII

ENGO → ENII or ENGI

ENEO → ENEI or ENGI (teacher recommend)

SOCIAL SCIENCES



What is Business?

Business is the use and exploration of accounting, economic, and business concepts.

What do we learn about in Y11 Business?

You will learn about scarcity, resources, interdependence, financial documents, the accounting equation, decision making, income and expenses, profit, supply and demand, market equilibrium, financial viability and marketing.



Why take BUS1?

Business is a great grounding for a wide range of careers but it is especially if you are interested in working in business, accounting, government, law, banking or analysis.

Where does it lead?

Business can lead you anywhere! Almost every career requires some business knowledge. In Year 12 you can choose to specialise in Accounting or Economics.

WHAT IS GEOGRAPHY?

Geography is the study of the interaction between the natural world and people and how they impact on each other.

WHAT DO WE LEARN ABOUT IN YEAR 11?

We learn about how landscapes have been formed and shaped over time through various processes. The sustainability of environments and how natural and cultural factors pose threats to places. We explore patterns around the globe based on natural hazards and populations. We explore modern issues and interpret them through maps, data, and resources and learn how to make a GIS Storymap.

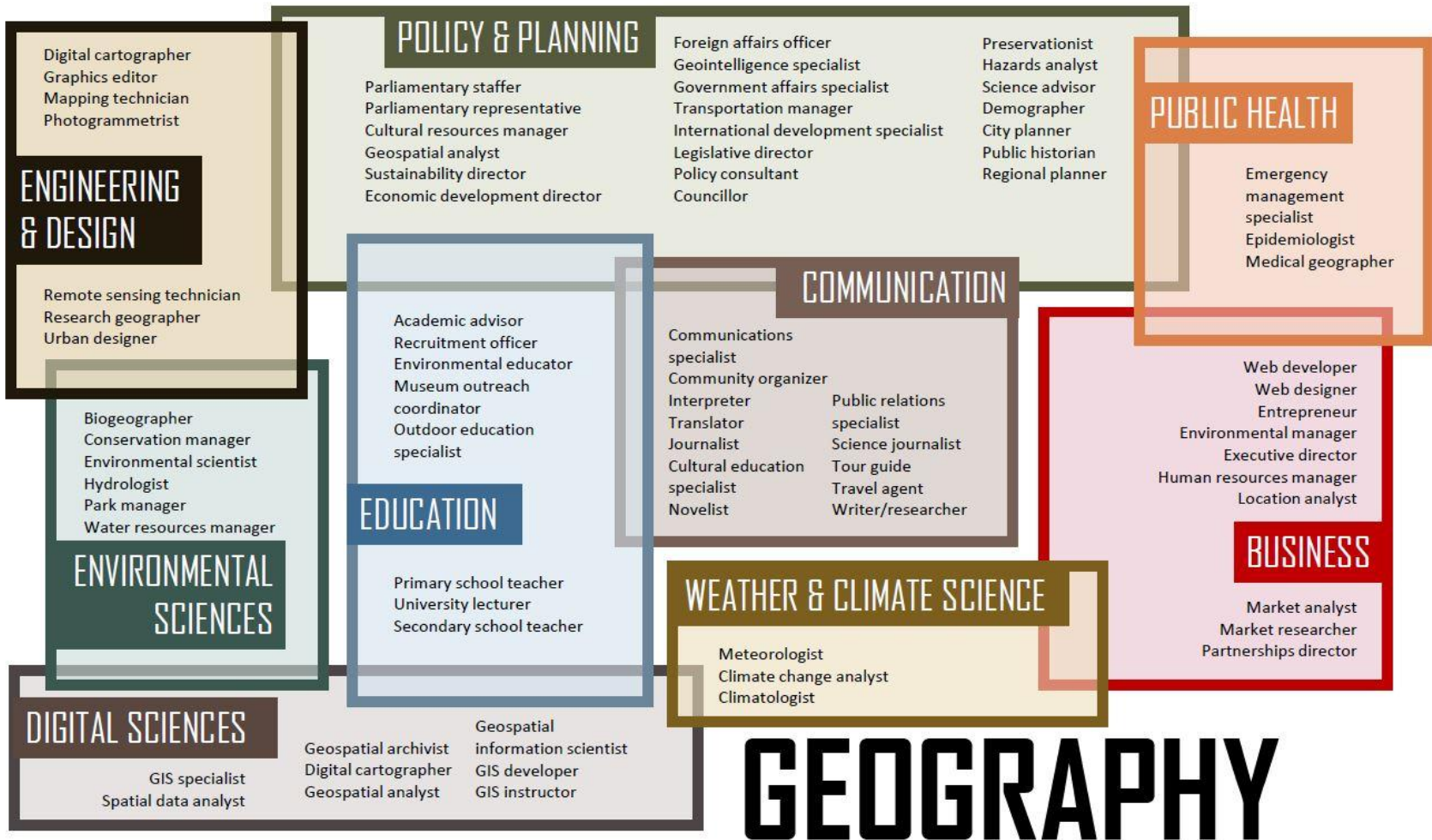
WHY TAKE GEO1?

Because it is fun. It helps us understand the world around us both past, present and to help plan for the future. We go on field trips!

WHERE DOES IT LEAD?

Everywhere! Geography is one of the most flexible subjects as it is the setting for all information, knowledge and events. Work outdoors!





GEOGRAPHY: UNDERSTAND THE WORLD WE LIVE IN. GO AND SEE IT VIA FIELD TRIPS!



WHAT IS HISTORY?

It is the study of interesting events that have shaped our present both in NZ and in the wider world

WHAT DO WE LEARN ABOUT IN YEAR 11?

You get to choose your own local research topic, and we generally do a trip or an excursion around this.

We look at the reasons why the War in the Pacific began in WW2, and this includes The Attack on Pearl Harbour and the Atomic bomb on Hiroshima. We also learn to look at sources and how to interpret them.

WHERE DOES IT LEAD?

Any area that needs you to write and think! Because History is really about skills, students go on to study in basically any field, and they leave knowing cool stuff about NZ's place in the world.

WHY TAKE IT?

Because it is so interesting!

Also, you learn to write, and learn to see how to ask good questions. Students who take it note that it helps them so much when they are doing research at Uni.





Science

Types of Science Careers



Environmental Scientist
Identifies, reduces, and eradicates pollutants and other hazards that threaten the environment
Salary: \$71,130



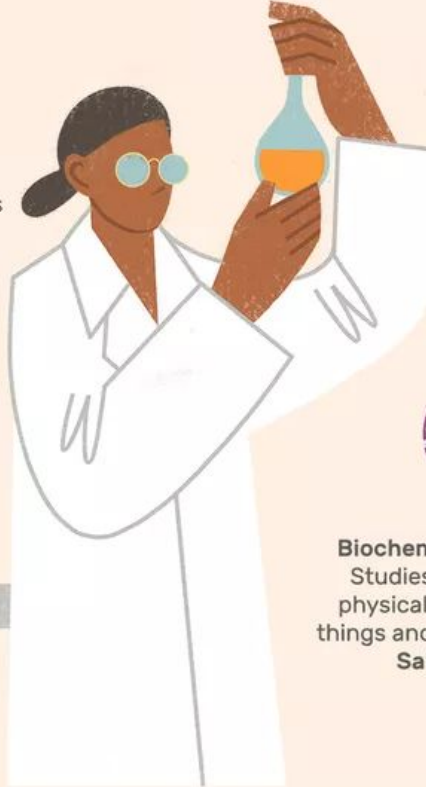
Forensic Scientist
Collects and analyzes physical evidence
Salary: \$58,230



Chemist
Studies chemicals and how they can be used to improve our lives
Salary: \$76,890



Biochemist or Biophysicist
Studies the chemical and physical properties of living things and biological processes
Salary: \$93,280



 the balance

To name only a few!

BTW - these are **STARTING SALARIES** (eg forensic science salaries range from \$50,000 - \$143,000 as you get promoted)

[Science Careers in NZ - what do you do, where do you study, how much can you earn?](#)

Science **will** happen to you - like it or not:



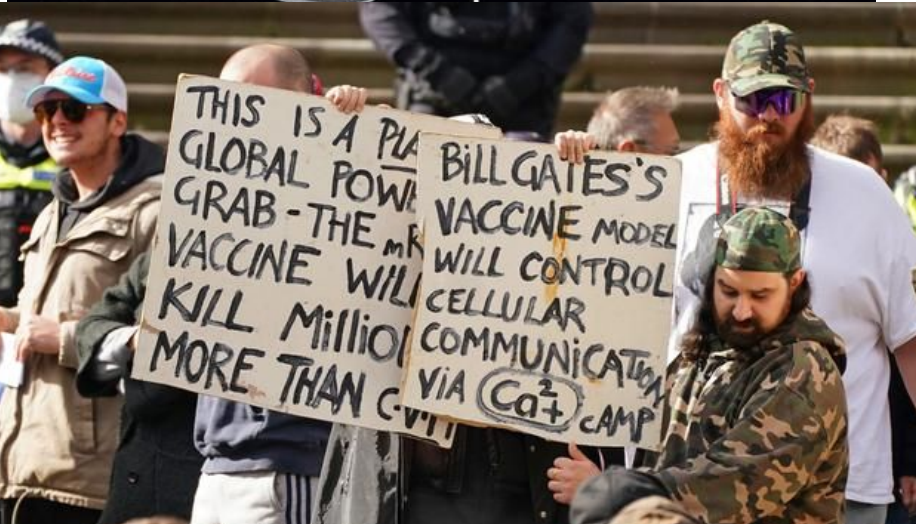
So you'd better learn about it and
find the **REAL** facts!

When you are ignorant of Science...

Flat Earth



Reality



HOMEOPATHY
for
MUSCULOSKELETAL
HEALING



Science

SCI (21 credits - Entirely Internally Assessed)

Entry requirements: Open to all students & based on Yr10 Science grades.

What do we learn: General Science course covering Chemistry, Physics, Biology and general aspects of Science.

SCGI (21 credits - 11 Internal and 10 External)

Entry requirements: Good habits and grades displayed in year 10 Science.

What do we learn: General Science course covering Chemistry (acids & bases), Physics (mechanics) and Biology (genetics).

SCEI (21 credits - 11 Internal and 10 External)

Entry requirements: A high level of scientific interest and understanding evidenced by topic tests grade average and teacher recommendations.

What do we learn: General Science course covering Chemistry (acids & bases), Physics (mechanics) and Biology (genetics).

Toi ataata Visual Art

Understand how Art is made, viewed, and valued.

Local Learning with authentic contexts

Research and develop outcomes that reflect on and respond to New Zealand's unique history

Toi ataata Visual Art

Assessment requirements:

Folio of two panels.

Work book.

4 NCEA achievement standards

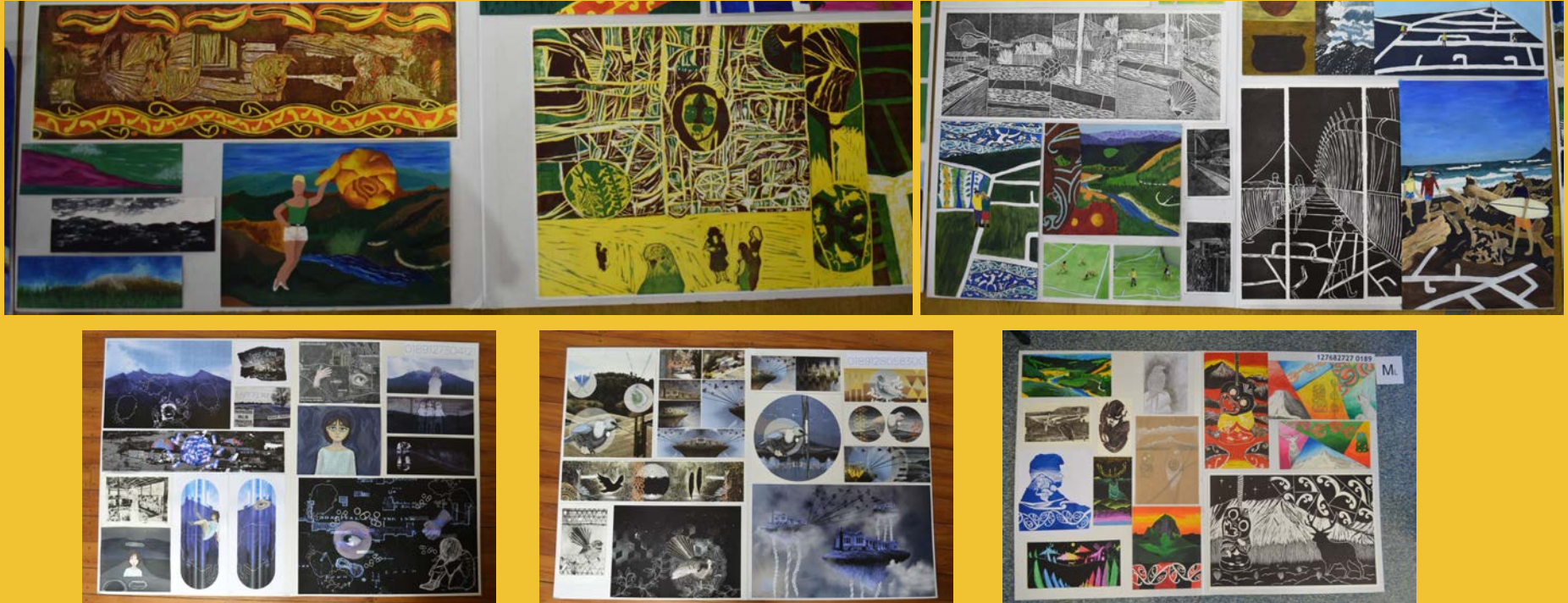
Two internal and two external submissions.

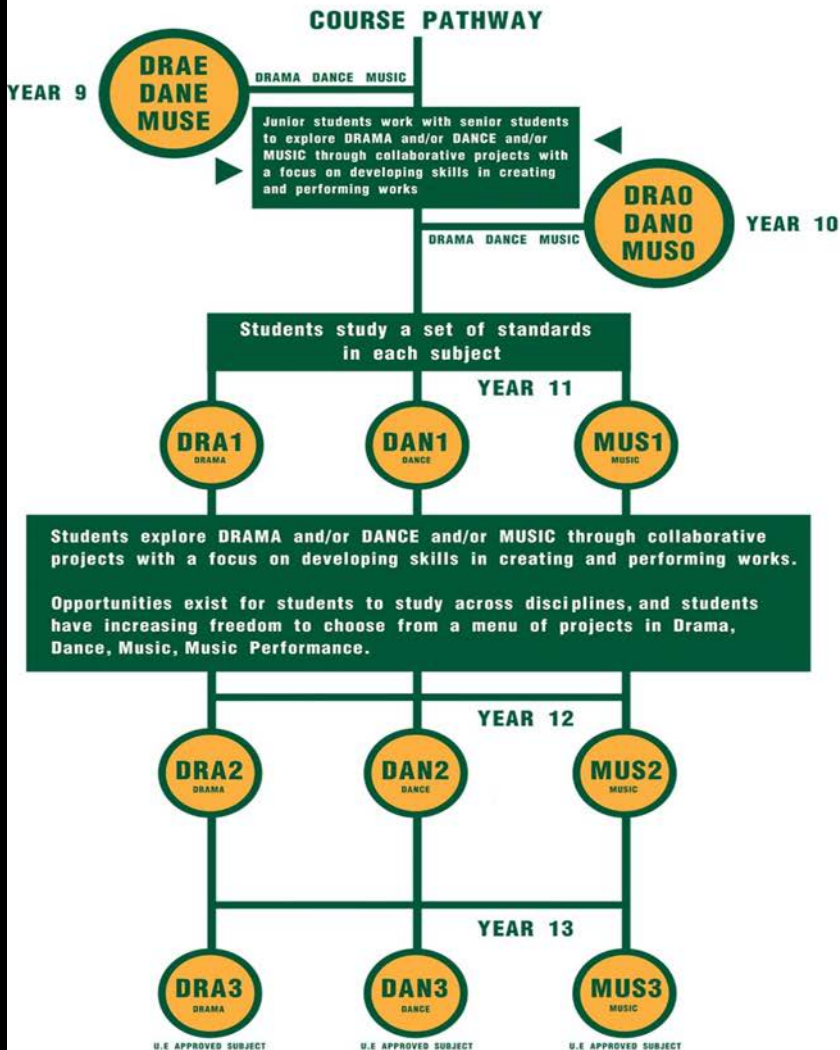
Toi ataata Visual Art

Curiosity
Risk taking
Critical thinking

learn and experience the key Māori foundational concepts and contexts associated with their place/space or waka huia, including kupu, concepts, tikanga, and kawa
research and gather a wide range of information through drawing, photography, and annotation in a visual diary that focuses on the key visual art elements associated with this place/space or waka huia

Toi ataata Visual Art





ARTS



TOI WHAKAARI

YEAR 11 MUSIC

20 - 26 credits available

Units studied at Year 11

- Solo and group performances
- Composition
- Theory
- Study of music works



YEAR 11 DANCE

22 - 26 Credits available

Units studied at Year 11

- **Group Choreography**
- **4 performance routines**
- **External Examination (Optional)**



Dance is a university approved subject

YEAR 11 DRAMA

18 - 22 Credits Available

**Four group performance standards
External Examination**

Drama is a University approved subject



TECHNOLOGY

Automotive Engineering - AUT

Technology Engineering - TCE

Building and Construction - BAC

Technology Materials - TEC

Fashion Design - FDZ

Design and Visual Communication - DVC

Hospitality - FDH

**7 Senior
Courses**

(Achievement Standard)

(Industry - Unit Standards)

Automotive Engineering

- You learn about the Automotive industry.
- You complete practical work on motor vehicles and stationary engines.
- 50% is assessed by industry unit standards - written booklets / tests.



Technology Engineering

- You make two set projects from steel and aluminium in the engineering workshop, (wind vane and engineers clamp).
- Assessment is by structured written portfolio - unit standards.



Technology Materials - Achievement Standards

- This is a design and make course. You have a lot of choice in your project work. TWO projects.
- Good level of self management and literacy skills.
- Assessment is by portfolio - written and design drawings.



Building and Construction

- You learn about the building industry.
- You complete set practical work. Two projects.
- Assessed by industry unit standards
- written booklets / tests.



Fashion Design - Achievement Standards

- This is a design and make course. You have a lot of choice in your project work.
- Requires a good level of self management and literacy skills.
- Assessment is by portfolio - written and design drawings.



Design and Visual Communication

Achievement Standards

- You should have completed Year 10 DVC or Art.
- You complete TWO major design projects - Product and Spatial.
- You prepare an external portfolio.
- You should be creative, self motivated and have good time management.



Hospitality - Level One



Unit standard course with currency in the workplace



21 internally assessed largely practical credits



Topics cover knife skills, meat, baking, eggs and fruit and vegetables



Course requirements – good attendance rate because of the ongoing practical assessment.



The background of the slide is a vibrant blue with a grid of small squares. Overlaid on this grid are numerous glowing white and light blue lines that connect various points, creating a network-like or circuit-like pattern. Some of these lines are thicker and more prominent, while others are thinner and more subtle. The overall effect is one of high-tech and digital connectivity.

Hangarau Matihiko -

Digital Technologies

Year 11

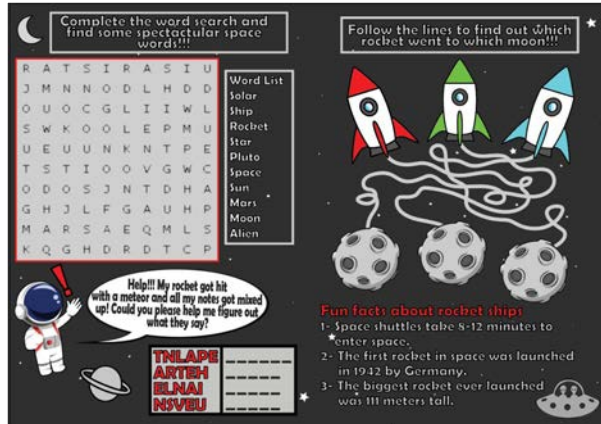
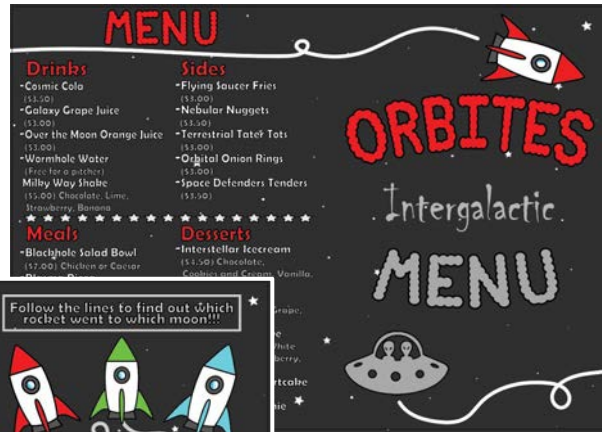
DTG1

DTG1

**Time to take your
computer skills to the
next level!**

DTG1

Creative ideas



DTG1

Game making and game design



DTG1

Where does it lead in Year 12...

DTM2

**Digital
Media**

DTS2

**Digital
Science**

DTA2

**Applied
Computer
Studies**

**YOUR FUTURE IS
DIGITAL
see you in
2025**

