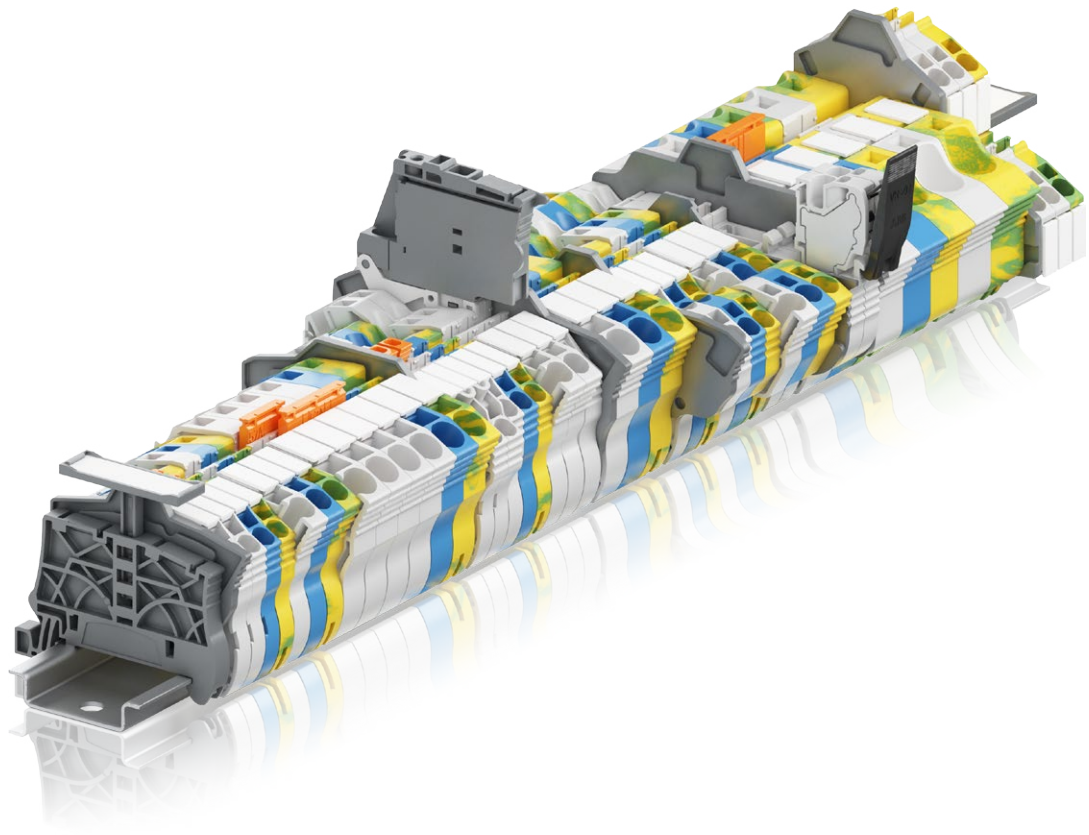




Brochure

Railway applications SNK series PI-Spring and pluggable technologies



Railway applications

SNK series – PI-Spring and pluggable technologies



ABB terminal blocks in railway applications		2
Technologies presentation		4
Feed-through		
2.5 mm ² / 12 AWG	ZK2.5	6
	ZK2.5-3P with 3 connections	7
	ZK2.5-4P with 4 connections	8
4 mm ² / 10 AWG	ZK4	9
	ZK4-3P with 3 connections	10
	ZK4-4P with 4 connections	11
6 mm ² / 8 AWG	ZK6	12
	ZK6-3P with 3 connections	13
10 mm ² / 6 AWG	ZK10	14
16 mm ² / 4 AWG	ZK16	15
Ground		
2.5 mm ² / 12 AWG	ZK2.5-PE	16
	ZK2.5-PE-3P with 3 connections	17
	ZP2.5-PE-4P with 4 connections	18
4 mm ² / 10 AWG	ZK4-PE	19
	ZK4-PE-3P with 3 connections	20
	ZK4-PE-4P with 4 connections	21
6 mm ² / 8 AWG	ZK6-PE	22
	ZK6-PE-3P with 3 connections	23
10 mm ² / 6 AWG	ZK10-PE	24
16 mm ² / 4 AWG	ZK16-PE	25
Disconnect with blade		
2.5 mm ² / 12 AWG	ZK2.5-S with test sockets	26
	ZK2.5-S-R1	27
Disconnect with plug		
2.5 mm ² / 12 AWG	ZK2.5-SP with test sockets	28
For 5x20 fuses		
2.5 mm ² / 12 AWG	ZK2.5-SF	29
	ZK2.5-SF-R with blown fuse indicator	30
Double deck		
2.5 mm ² / 12 AWG	ZK2.5-D2 2 feed-through circuits	31
	ZK2.5-D1 1 feed-through circuit	32
	ZK2.5-D2-PE 1 feed-through circuit and 1 ground circuit	33
	ZK2.5-D1-PE 1 ground circuit	34
Pluggable		
2.5 mm ² / 12 AWG	ZDK2.5-22 feed-through 4 connections	36
4 mm ² / 10 AWG	ZDK4-22 feed-through 4 connections	38
Overview of terminal block ranges for railway applications		40
Standards and compliance		42
Railway solutions and tools		43
Index		44

ABB terminal blocks for railway applications

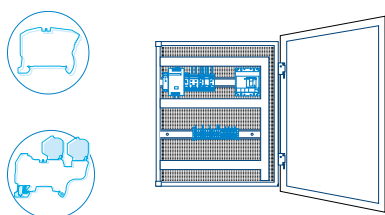
A recognized expertise

ABB is a world leading supplier of innovative technologies for rolling stock and infrastructure with a comprehensive range of solutions. Benefit from one single source for all your connection needs thanks to our complete offering of terminal blocks and technologies, the most complete of the market.

All our railway terminal blocks are qualified for worldwide markets, applications and for severe environments: vibration, shock...

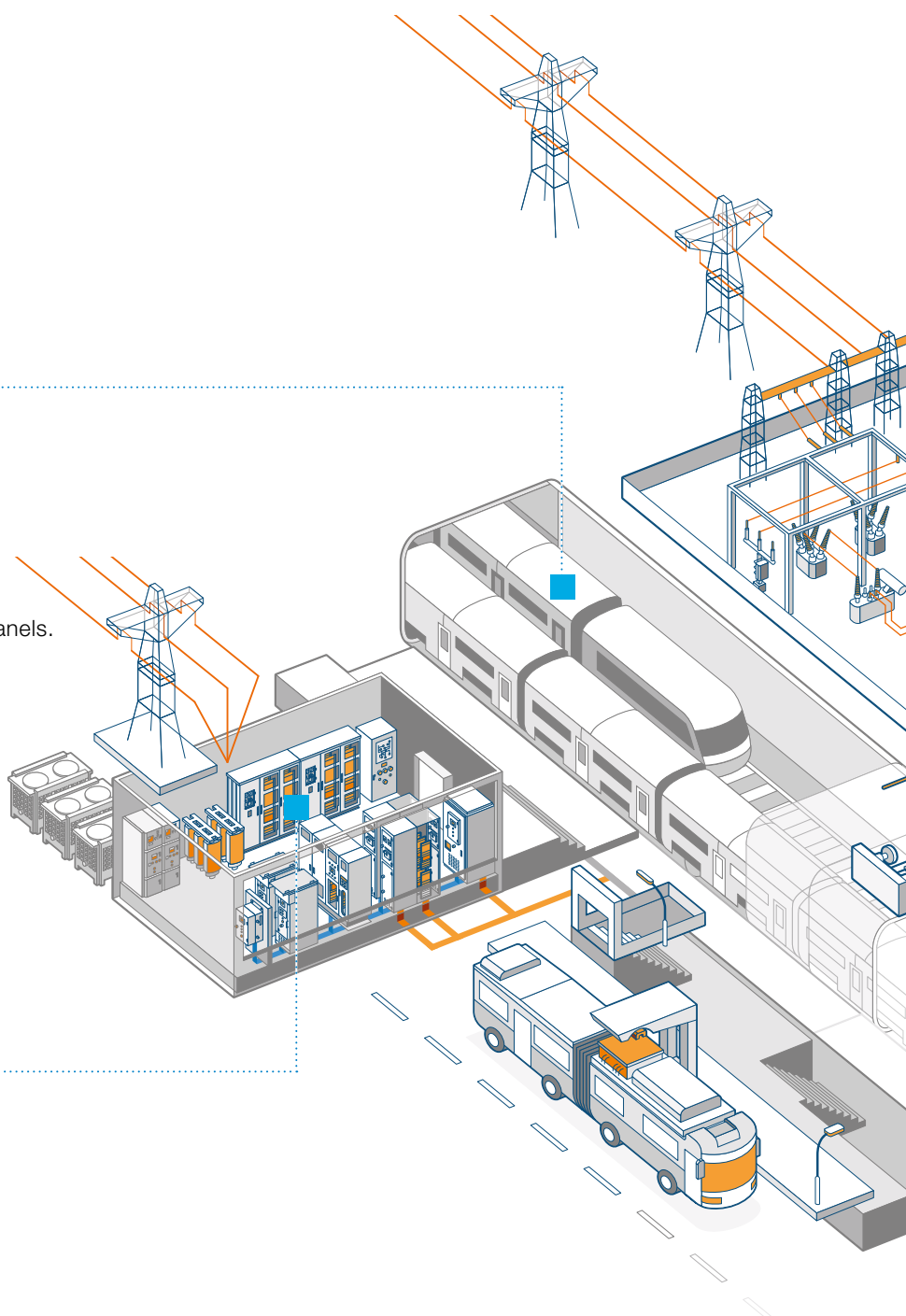
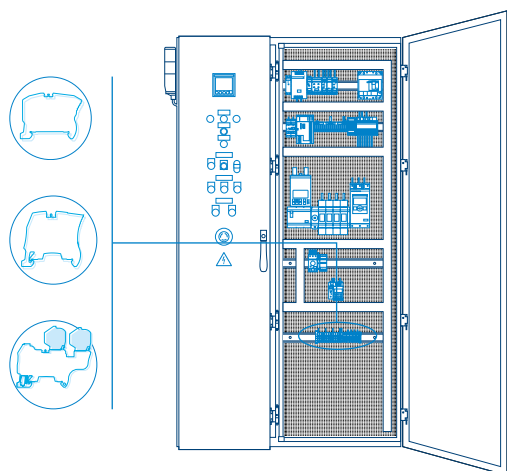
Terminal blocks in rolling stock

- HVAC
- Door control
- Electrical distribution
- Control system and Pilot center.



Terminal blocks in infrastructure

- Electrical distribution and control panels.



Compliance with main international railway standards

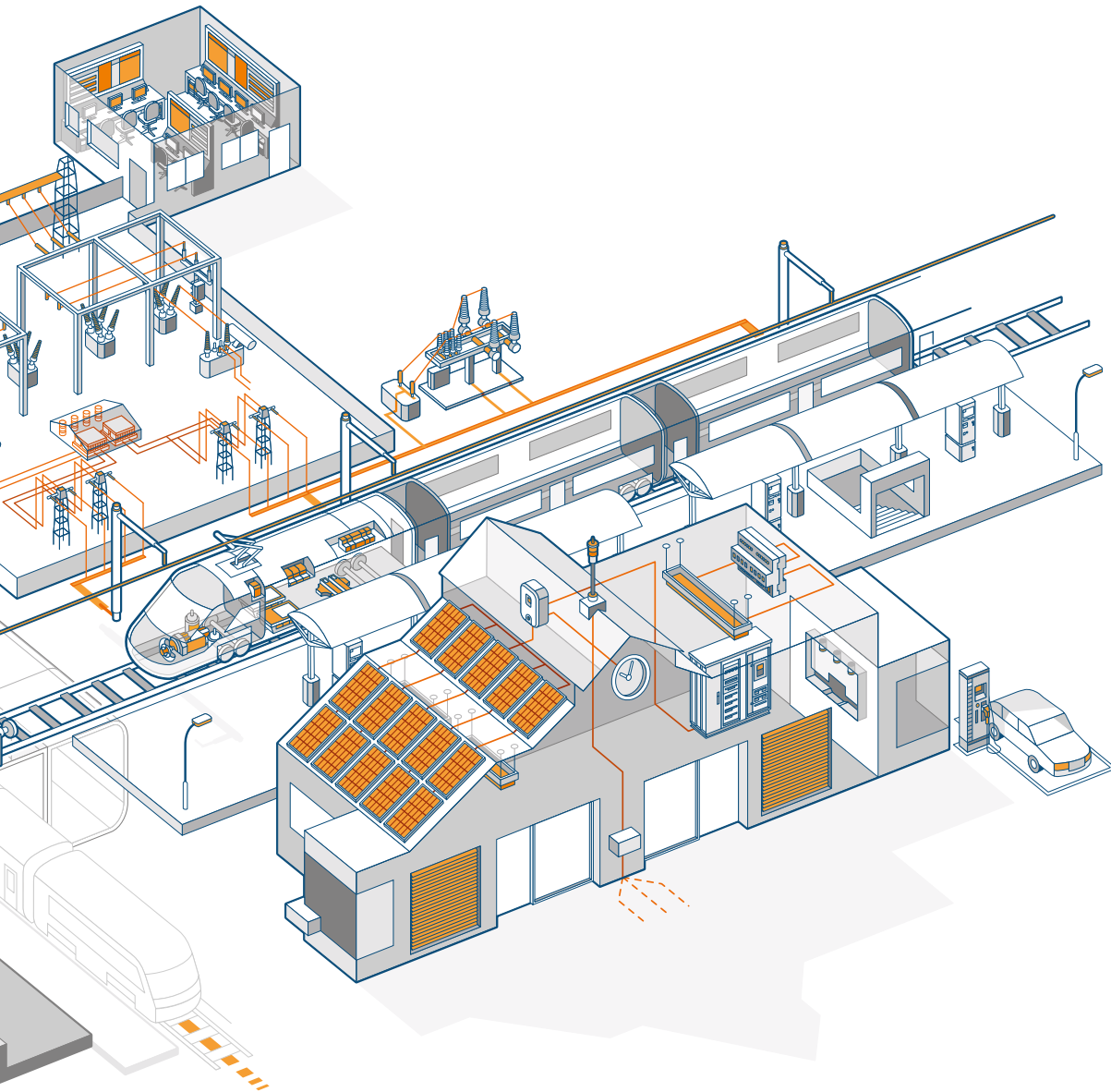
Approved for rolling stocks and infrastructures

Technologies: PI-Spring, pluggable, ADO System® (IDC), stud and quick-connect

Customized terminal block assemblies: from design to manufacturing and packing

Rail design software: ease the design of terminal blocks assemblies

Worldwide presence and support



SNK series, terminal blocks

PI-Spring and pluggable technologies

Range overview from 2.5 to 16 mm²



Reliable in harsh conditions

Complies with the main international standards (IEC, EN, NFF, ASTM...)

Passed all the most severe tests requested in rolling stock applications:

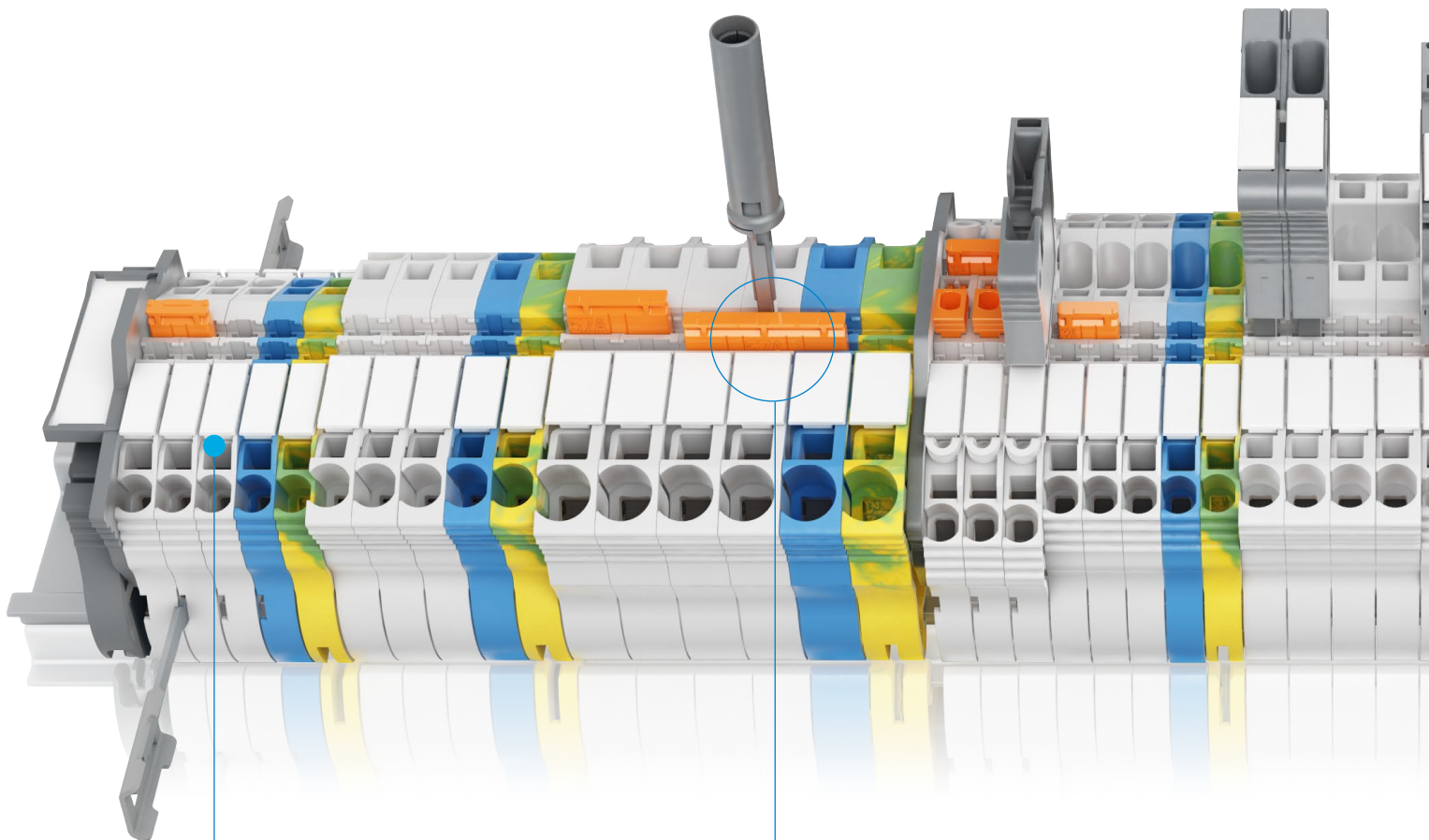
- Vibration and shock
- Environmental (aging, corrosion...)
- Flammability / toxicity.



Improve installation efficiency

Innovative PI-Spring and pluggable technologies boost your efficiency

- 50% faster connection time
- Reduced effort and conductor preparation time
- Serialized production and testing of harnesses (pluggable)
- Factory and final commissioning made easy.



Voltage test
screwdriver entry point
accepts category II probes

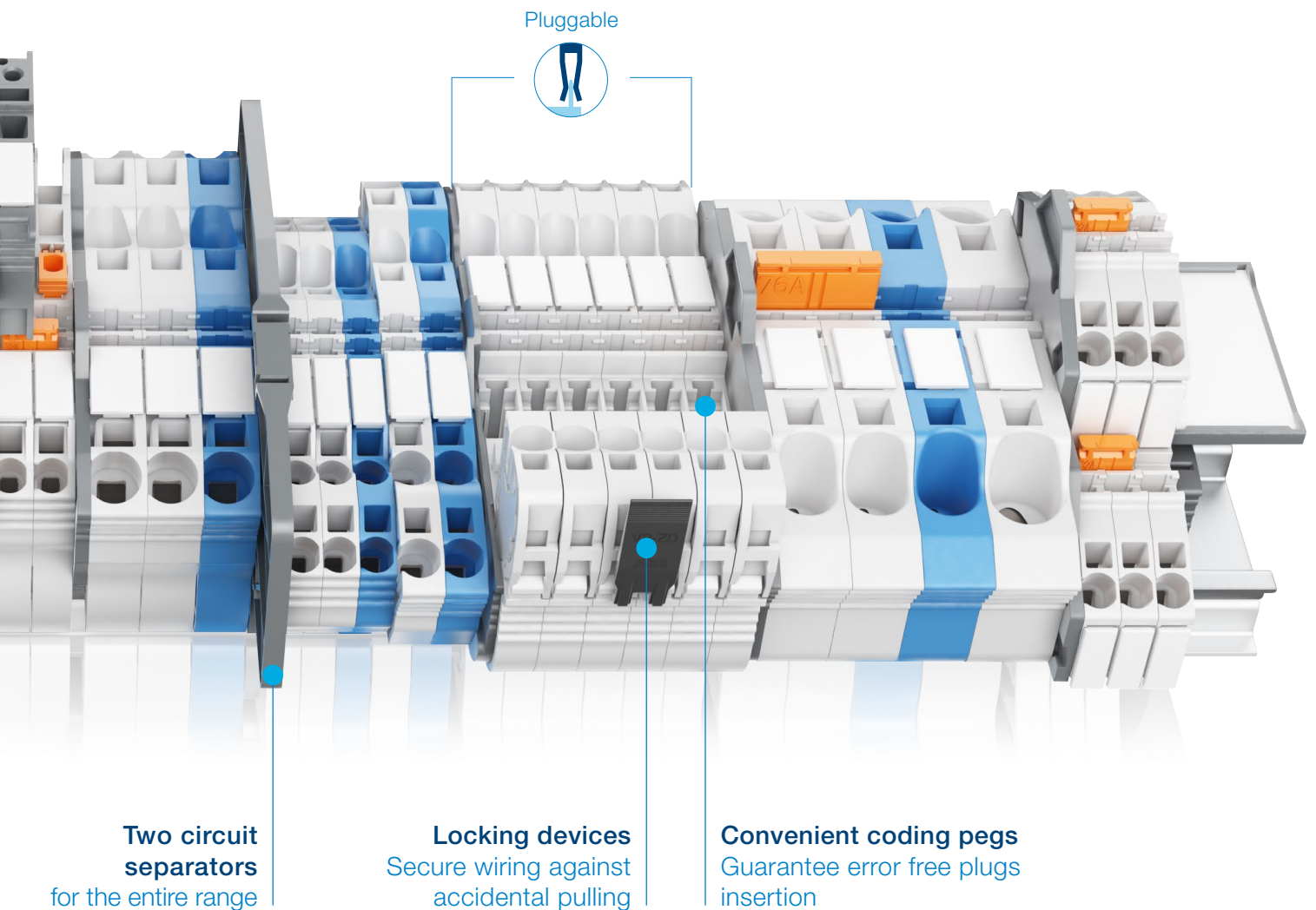
Double central channels
allows multiconfigurations
(jumping, testing and measuring)



Safety and protection

Installation is optimized and secured thanks to our smart design

- Asymmetrical design avoid mounting errors
- Excellent marking visibility
- Full IP20 protection even with accessories.



Pluggable



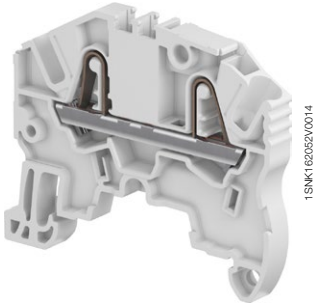
Two circuit separators
for the entire range

Locking devices
Secure wiring against
accidental pulling

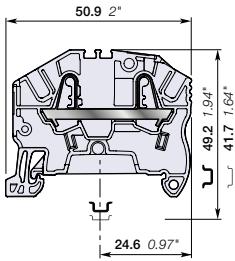
Convenient coding pegs
Guarantee error free plugs
insertion

ZK2.5 PI-Spring terminal blocks

Feed-through - 5.2 mm 0.205 in spacing



ZK2.5



5.2 mm 0.205 in spacing

Description

Combine high performance with compact dimensions:

- 1000 V IEC 600 V UL,
- Opt for the best marking visibility thanks to the up-front, flat marker zone, which lets you mark up to eight digits or increase the font size.

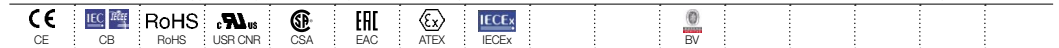
Ordering details

Description	Color	Type	Order code	Pkg qty	Weight (1 pce) g
Feed-through 2 connections	Grey	ZK2.5	1SNK705010R0000	50	5.50
	Blue	ZK2.5-BL	1SNK705020R0000	50	5.50
	Orange	ZK2.5-OR	1SNK705030R0000	50	5.50
	Yellow	ZK2.5-YL	1SNK705060R0000	50	5.50
	Green	ZK2.5-GN	1SNK705061R0000	50	5.50
	Red	ZK2.5-RD	1SNK705062R0000	50	5.50
	White	ZK2.5-WH	1SNK705065R0000	50	5.50
	Black	ZK2.5-BK	1SNK705066R0000	50	5.50

Main technical data

Connecting capacity	IEC	UL - CSA	Mounting instructions
1 conductor per clamp	Rigid - Solid / Stranded	0.2 ... 4 mm ²	26 ... 12 AWG
	Flexible	0.22 ... 2.5 mm ²	26 ... 14 AWG
	with non insulated ferrule	0.22 ... 2.5 mm ²	26 ... 14 AWG
	with insulated ferrule	0.22 ... 2.5 mm ²	26 ... 14 AWG
2 conductors per clamp	Flexible with twin ferrule	0.22 ... 0.5 mm ²	26 ... 20 AWG
	Rated current / Rated cross section	24 A / 2.5 mm ²	20 A / 12 AWG
Rated short-time withstand current (1s)	300 A		
Short Circuit Current Rating (with specific conditions)		100 KA	
Rated voltage	1000 V	600 V	
Impulse withstand voltage	8000 V		
Protection	IP20	NEMA 1	
Increased safety Ex e	693 V 21 A IEC/EN 60079-7 - IM2 II 2 GD Ex eb /IIC/IIIC		

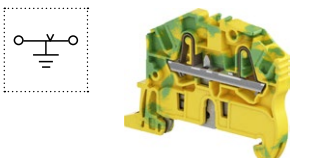
The connecting capacity data for one Rigid - Solid / Stranded - Flexible conductor (when applicable) is a mandatory information required by IEC, UL and CSA standards. All other data are provided as supplementary information only. For more details, please consult our CB, UL or CSA certificates and technical datasheet available on <http://www.abb.com>



Accessories

Description	Color	Type	Order code	Pkg qty	Weight (1 pce) g	
1 End stops	Dark grey	BAZ1	1SNK900002R0000	20	5.30	
2 End sections	Dark grey	EK2.5	1SNK705910R0000	20	1.76	
3 Jumper bars	Orange	2 poles	JB5-2	1SNK905302R0000	50	1.30
		3 poles	JB5-3	1SNK905303R0000	50	2.00
		4 poles	JB5-4	1SNK905304R0000	50	2.70
		5 poles	JB5-5	1SNK905305R0000	50	3.50
		10 poles	JB5-10	1SNK905310R0000	30	7.10
		50 poles	JB5-50	1SNK905350R0000	10	36.10
4 Cross spacing jumpers	Orange	JB85-3	1SNK900603R0000	10	2.80	
5 Circuit separators	Dark grey	CS-R2	1SNK900106R0000	20	3.84	
6 Test adapters	Dark grey	For test plugs DIA 2 mm 0.079 in	TP2	1SNK900203R0000	20	1.73
		For test plugs DIA 4 mm 0.157 in	TP4	1SNK900205R0000	20	2.41
7 Test connectors	Dark grey	5.2 mm 0.205 in spacing	TC5	1SNK900200R0000	10	5.23
		End module, 5.2 mm 0.205 in	TC5-R1	1SNK900201R0000	10	5.23
8 Shield connectors		SHBP	1SNK900601R0000	20	4.12	
		MC512	1SNK140000R0000	22	9.00	
9 Terminal block markers	White	MC512PA	1SNK149999R0000	20	10.00	
		Universal wire markers holder	Grey	UMH	1SNK900611R0000	10

Complete list of accessories is indicated in the terminal block datasheet. Some accessories such as jumper bars may modify the terminal block's ratings: complete information in the accessories catalogue pages.



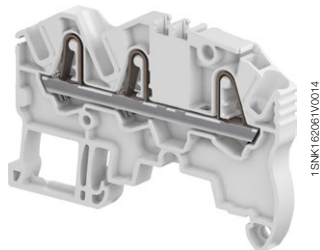
Ground PI-Spring terminal blocks

Description	Color	Type	Order code	Pkg qty	Weight (1 pce) g
Ground Profile aligned with ZK2.5	Green-yellow	ZK2.5-PE	1SNK705150R0000	20	10.00

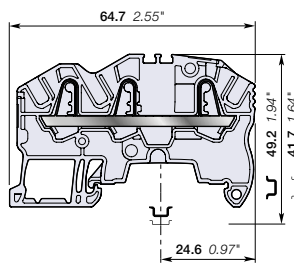
All the technical data for UL/CSA standard and dimensions in inches are in italic.

ZK2.5-3P PI-Spring terminal blocks

Feed-through with 3 connections - 5.2 mm 0.205 in spacing



ZK2.5-3P



5.2 mm 0.205 in spacing

Description

Find all the features of the ZK2.5 terminal block with the added option of distributing or branching 3 conductors.

Ordering details

Description	Color	Type	Order code	Pkg qty	Weight (1 pce) g
Feed-through 3 connections	Grey	ZK2.5-3P	1SNK705011R0000	50	7.40
	Blue	ZK2.5-3P-BL	1SNK705021R0000	50	7.40
	Orange	ZK2.5-3P-OR	1SNK705031R0000	50	7.40
	Yellow	ZK2.5-3P-YL	1SNK705067R0000	50	7.40
	Green	ZK2.5-3P-GN	1SNK705068R0000	50	7.40
	Red	ZK2.5-3P-RD	1SNK705069R0000	50	7.40
	White	ZK2.5-3P-WH	1SNK705072R0000	50	7.40
	Black	ZK2.5-3P-BK	1SNK705073R0000	50	7.40

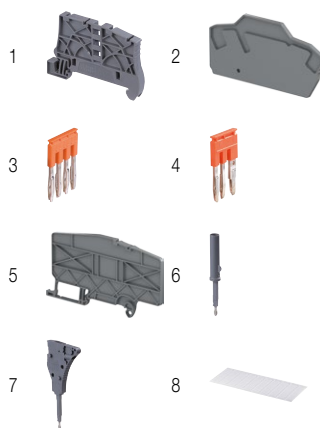
Main technical data

Connecting capacity	IEC	UL - CSA	Mounting instructions
1 conductor per clamp Rigid - Solid / Stranded Flexible with non insulated ferrule with insulated ferrule	0.2 ... 4 mm ² 0.22 ... 2.5 mm ² 0.22 ... 2.5 mm ² 0.22 ... 2.5 mm ²	26 ... 12 AWG 26 ... 14 AWG 26 ... 14 AWG 26 ... 14 AWG	Rail Wire stripping length Tool (for flexible conductor without ferrule)
2 conductors per clamp Flexible with twin ferrule	0.22 ... 0.5 mm ²	26 ... 20 AWG	Flat screwdriver Ø 3.5 mm Ø 0.138 in
Rated current / Rated cross section	24 A / 2.5 mm ²	20 A / 12 AWG	
Rated short-time withstand current (1s)	300 A		
Short Circuit Current Rating (with specific conditions)		100 kA	
Rated voltage	1000 V	600 V	
Impulse withstand voltage	8000 V		
Protection	IP20	NEMA 1	
Increased safety Ex e	693 V 21 A IEC/EN 60079-7 - IM2 II 2 GD Ex eb I/IC/IIIC		

The connecting capacity data for one Rigid - Solid / Stranded - Flexible conductor (when applicable) is a mandatory information required by IEC, UL and CSA standards. All other data are provided as supplementary information only. For more details, please consult our CB, UL or CSA certificates and technical datasheet available on <http://www.abb.com>

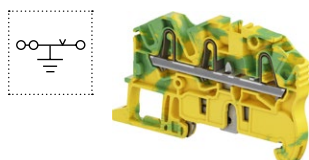


Accessories



Description	Color	Type	Order code	Pkg qty	Weight (1 pce) g	
1 End stops	Dark grey	BAZ1	1SNK900002R0000	20	5.30	
2 End sections	Dark grey	EK2.5-3P	1SNK705911R0000	20	2.42	
3 Jumper bars	Orange	2 poles	JB5-2	1SNK905302R0000	50	1.30
		3 poles	JB5-3	1SNK905303R0000	50	2.00
		4 poles	JB5-4	1SNK905304R0000	50	2.70
		5 poles	JB5-5	1SNK905305R0000	50	3.50
		10 poles	JB5-10	1SNK905310R0000	30	7.10
		50 poles	JB5-50	1SNK905350R0000	10	36.10
4 Cross spacing jumpers	Orange	JB85-3	1SNK900603R0000	10	2.80	
5 Circuit separators	Dark grey	CS-R3	1SNK900107R0000	20	6.44	
6 Test adapters	Dark grey	For test plugs DIA 2 mm 0.079 in	TP2	1SNK900203R0000	20	1.73
		For test plugs DIA 4 mm 0.157 in	TP4	1SNK900205R0000	20	2.41
7 Test connectors	Dark grey	5.2 mm 0.205 in spacing	TC5	1SNK900200R0000	10	5.23
		End module, 5.2 mm 0.205 in	TC5-R1	1SNK900201R0000	10	5.23
		Blank card	MC512PA	1SNK140000R0000	22	9.00
8 Terminal block markers	White	MC512PA	1SNK149999R0000	20	10.00	
	Grey	UMH	1SNK900611R0000	10	0.20	

Complete list of accessories is indicated in the terminal block datasheet. Some accessories such as jumper bars may modify the terminal block's ratings: complete information in the accessories catalogue pages.



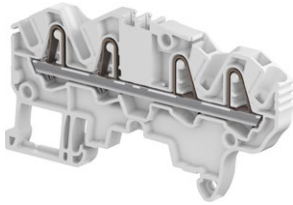
Ground PI-Spring terminal blocks

Description	Color	Type	Order code	Pkg qty	Weight (1 pce) g
Ground Profile aligned with ZK2.5-3P	Green-yellow	ZK2.5-PE-3P	1SNK705151R0000	20	11.90

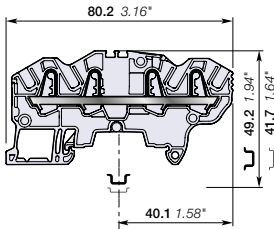
All the technical data for UL/CSA standard and dimensions in inches are in *italics*.

ZK2.5-4P PI-Spring terminal blocks

Feed-through with 4 connections - 5.2 mm 0.205 in spacing



ZK2.5-4P



5.2 mm 0.205 in spacing

Description

Find all the features of the ZK2.5 terminal block with the added option of distributing or branching 4 conductors.

Ordering details

Description	Color	Type	Order code	Pkg qty	Weight (1 pce) g
Feed-through 4 connections	Grey	ZK2.5-4P	1SNK705012R0000	50	9.00
	Blue	ZK2.5-4P-BL	1SNK705022R0000	50	9.00
	Orange	ZK2.5-4P-OR	1SNK705032R0000	50	9.00
	Yellow	ZK2.5-4P-YL	1SNK705074R0000	50	9.00
	Green	ZK2.5-4P-GN	1SNK705075R0000	50	9.00
	Red	ZK2.5-4P-RD	1SNK705076R0000	50	9.00
	White	ZK2.5-4P-WH	1SNK705079R0000	50	9.00
	Black	ZK2.5-4P-BK	1SNK705080R0000	50	9.00

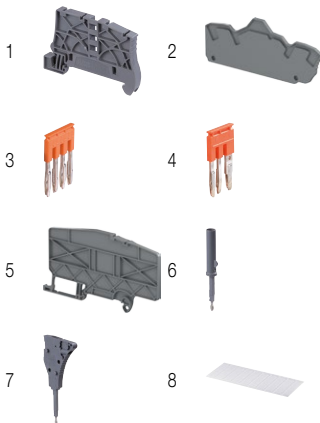
Main technical data

Connecting capacity	IEC	UL - CSA	Mounting instructions
1 conductor per clamp	Rigid - Solid / Stranded	0.2 ... 4 mm ²	26 ... 12 AWG
	Flexible with non insulated ferrule	0.22 ... 2.5 mm ²	26 ... 14 AWG
	with insulated ferrule	0.22 ... 2.5 mm ²	26 ... 14 AWG
	Flexible with twin ferrule	0.22 ... 0.5 mm ²	26 ... 20 AWG
2 conductors per clamp			
Rated current / Rated cross section		24 A / 2.5 mm ²	20 A / 12 AWG
Rated short-time withstand current (1s)		300 A	
Short Circuit Current Rating (with specific conditions)		100 kA	
Rated voltage		1000 V	600 V
Impulse withstand voltage		8000 V	
Protection		IP20	NEMA 1
Increased safety Ex e		693 V 21 A IEC/EN 60079-7 - IM2 II 2 GD Ex eb I/II/C/IIIC	

The connecting capacity data for one Rigid - Solid / Stranded - Flexible conductor (when applicable) is a mandatory information required by IEC, UL and CSA standards. All other data are provided as supplementary information only. For more details, please consult our CB, UL or CSA certificates and technical datasheet available on <http://www.abb.com>

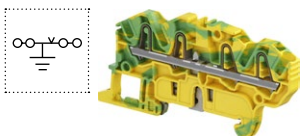


Accessories



Description	Color	Type	Order code	Pkg qty	Weight (1 pce) g	
1 End stops	Dark grey	BAZ1	1SNK900002R0000	20	5.30	
2 End sections	Dark grey	EK2.5-4P	1SNK705912R0000	20	2.68	
3 Jumper bars	Orange	2 poles	JB5-2	1SNK905302R0000	50	1.30
		3 poles	JB5-3	1SNK905303R0000	50	2.00
		4 poles	JB5-4	1SNK905304R0000	50	2.70
		5 poles	JB5-5	1SNK905305R0000	50	3.50
		10 poles	JB5-10	1SNK905310R0000	30	7.10
		50 poles	JB5-50	1SNK905350R0000	10	36.10
4 Cross spacing jumpers	Orange	JB85-3	1SNK900603R0000	10	2.80	
5 Circuit separators	Dark grey	CS-R3	1SNK900107R0000	20	6.44	
6 Test adapters	Dark grey	For test plugs DIA 2 mm 0.079 in	TP2	1SNK900203R0000	20	1.73
		For test plugs DIA 4 mm 0.157 in	TP4	1SNK900205R0000	20	2.41
7 Test connectors	Dark grey	5.2 mm 0.205 in spacing	TC5	1SNK900200R0000	10	5.23
		End module, 5.2 mm 0.205 in	TC5-R1	1SNK900201R0000	10	5.23
8 Terminal block markers	White	MC512	1SNK140000R0000	22	9.00	
		MC512PA	1SNK149999R0000	20	10.00	
	Grey	UMH	1SNK900611R0000	10	0.20	

Complete list of accessories is indicated in the terminal block datasheet. Some accessories such as jumper bars may modify the terminal block's ratings: complete information in the accessories catalogue pages.



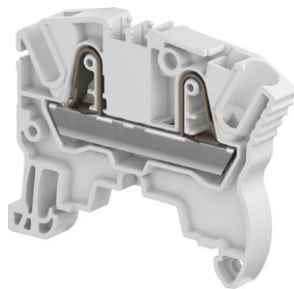
Ground PI-Spring terminal blocks

Description	Color	Type	Order code	Pkg qty	Weight (1 pce) g
Ground Profile aligned with ZK2.5-4P	Green-yellow	ZK2.5-PE-4P	1SNK705152R0000	20	13.60

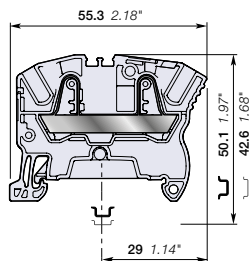
All the technical data for UL/CSA standard and dimensions in inches are in italic.

ZK4 PI-Spring terminal blocks

Feed-through - 6 mm 0.236 in spacing



ZK4



6 mm 0.236 in spacing

Description

Combine high performance with compact dimensions:

- 1000 V IEC 600 V UL,
- Opt for the best marking visibility thanks to the up-front, flat marker zone, which lets you mark up to eight digits or increase the font size.

Ordering details

Description	Color	Type	Order code	Pkg qty	Weight (1 pce) g
Feed-through 2 connections	Grey	ZK4	1SNK706010R0000	50	7.90
	Blue	ZK4-BL	1SNK706020R0000	50	7.90
	Orange	ZK4-OR	1SNK706030R0000	50	7.90

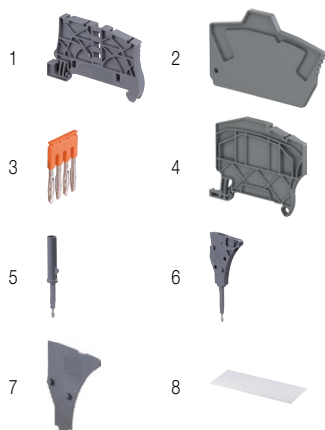
Main technical data

Connecting capacity	IEC	UL - CSA	Mounting instructions
1 conductor per clamp	Rigid - Solid / Stranded Flexible	26 ... 10 AWG	Rail Wire stripping length
with non insulated ferrule	0.5 ... 4 mm ²	26 ... 12 AWG	
with insulated ferrule	0.5 ... 4 mm ²	26 ... 12 AWG	
2 conductors per clamp	Flexible with twin ferrule	26 ... 18 AWG	Tool (for flexible conductor without ferrule)
Rated current / Rated cross section	32 A / 4 mm ²	30 A / 10 AWG	
Rated short-time withstand current (1s)	480 A		
Short Circuit Current Rating (with specific conditions)		100 kA	Flat screwdriver Ø 3.5 mm Ø 0.138 in
Rated voltage	1000 V	600 V	
Impulse withstand voltage	8000 V		
Protection	IP20	NEMA 1	
Increased safety Ex e	693 V 29 A IEC/EN 60079-7 - IM2 II 2 GD Ex eb I/II/C/IIIC		

The connecting capacity data for one Rigid - Solid / Stranded - Flexible conductor (when applicable) is a mandatory information required by IEC, UL and CSA standards. All other data are provided as supplementary information only. For more details, please consult our CB, UL or CSA certificates and technical datasheet available on <http://www.abb.com>

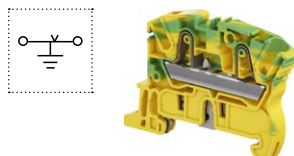


Accessories



Description	Color	Type	Order code	Pkg qty	Weight (1 pce) g	
1 End stops	Dark grey	BAZ1	1SNK900002R0000	20	5.30	
2 End sections	Dark grey	EK2.5	1SNK705910R0000	20	1.76	
3 Jumper bars	Orange	2 poles	JB6-2	1SNK906302R0000	50	1.30
		3 poles	JB6-3	1SNK906303R0000	50	2.10
		4 poles	JB6-4	1SNK906304R0000	50	2.90
		5 poles	JB6-5	1SNK906305R0000	50	3.60
		10 poles	JB6-10	1SNK906310R0000	20	7.40
4 Circuit separators	Dark grey	CS-R2	1SNK906350R0000	10	38.10	
5 Test adapters	Dark grey	3 mm	TP2	1SNK900203R0000	20	1.73
		5.2 mm	TP4	1SNK900205R0000	20	2.41
6 Test connectors	Dark grey	TC5-R1	1SNK900201R0000	10	5.23	
7 Spacers	Dark grey	ES-TC6	1SNK900105R0000	10	0.80	
8 Terminal block markers	White	MC612	1SNK150000R0000	22	10.00	
	Grey	MC612PA	1SNK159999R0000	20	11.00	
	Grey	UMH	1SNK900611R0000	10	0.20	

Complete list of accessories is indicated in the terminal block datasheet. Some accessories such as jumper bars may modify the terminal block's ratings: complete information in the accessories catalogue pages.



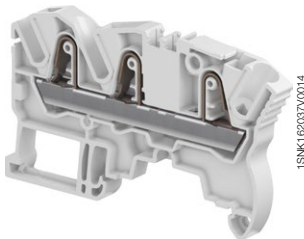
Ground PI-Spring terminal blocks

Description	Color	Type	Order code	Pkg qty	Weight (1 pce) g
Ground Profile aligned with ZK4	Green-yellow	ZK4-PE	1SNK706150R0000	20	12.60

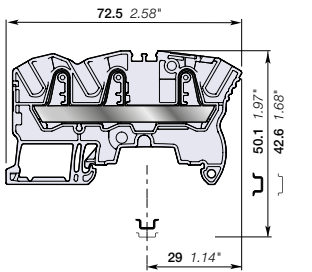
All the technical data for UL/CSA standard and dimensions in inches are in *italics*.

ZK4-3P PI-Spring terminal blocks

Feed-through with 3 connections - 6 mm 0.236 in spacing



ZK4-3P



6 mm 0.236 in Spacing

Description

Find all the features of the ZK4 terminal block with the added option of distributing or branching 3 conductors.

Ordering details

Description	Color	Type	Order code	Pkg qty	Weight (1 pce) g
Feed-through 3 connections	Grey	ZK4-3P	1SNK706011R0000	50	11.00
	Blue	ZK4-3P-BL	1SNK706021R0000	50	11.00
	Orange	ZK4-3P-OR	1SNK706031R0000	50	11.00

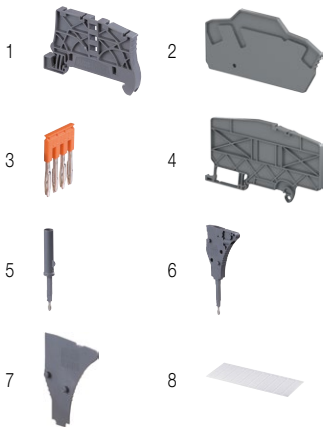
Main technical data

Connecting capacity	IEC	UL - CSA	Mounting instructions
1 conductor per clamp	Rigid - Solid / Stranded Flexible with non insulated ferrule with insulated ferrule	0.5 ... 6 mm ² 0.5 ... 4 mm ² 0.5 ... 4 mm ² 0.5 ... 4 mm ²	26 ... 10 AWG 26 ... 12 AWG 26 ... 12 AWG
2 conductors per clamp	Flexible with twin ferrule	0.5 ... 1 mm ²	26 ... 18 AWG
Rated current / Rated cross section	32 A / 4 mm ²	30 A / 10 AWG	
Rated short-time withstand current (1s)	480 A		
Short Circuit Current Rating (with specific conditions)		100 kA	
Rated voltage	1000 V	600 V	
Impulse withstand voltage	8000 V		
Protection	IP20	NEMA 1	
Increased safety Ex e	693 V 29 A IEC/EN 60079-7 - IM2 II 2 GD Ex eb I/IC/IIIC		

The connecting capacity data for one Rigid - Solid / Stranded - Flexible conductor (when applicable) is a mandatory information required by IEC, UL and CSA standards. All other data are provided as supplementary information only. For more details, please consult our CB, UL or CSA certificates and technical datasheet available on <http://www.abb.com>



Accessories



Description	Color	Type	Order code	Pkg qty	Weight (1 pce) g
1 End stops	Dark grey	BAZ1	1SNK900002R0000	20	5.30
2 End sections	Dark grey	EK2.5-3P	1SNK705911R0000	20	2.42
3 Jumper bars	Orange	JB6-2	1SNK906302R0000	50	1.30
		JB6-3	1SNK906303R0000	50	2.10
		JB6-4	1SNK906304R0000	50	2.90
		JB6-5	1SNK906305R0000	50	3.60
		JB6-10	1SNK906310R0000	20	7.40
		JB6-50	1SNK906350R0000	10	38.10
4 Circuit separators	Dark grey	CS-R3	1SNK900107R0000	20	6.44
5 Test adapters	Dark grey	TP2	1SNK900203R0000	20	1.73
		TP4	1SNK900205R0000	20	2.41
6 Test connectors	Dark grey	TC5-R1	1SNK900201R0000	10	5.23
7 Spacers	Dark grey	ES-TC6	1SNK900105R0000	10	0.80
8 Terminal block markers	White	MC612	1SNK150000R0000	22	10.00
		MC612PA	1SNK159999R0000	20	11.00
	Grey	UMH	1SNK900611R0000	10	0.20

Complete list of accessories is indicated in the terminal block datasheet. Some accessories such as jumper bars may modify the terminal block's ratings: complete information in the accessories catalogue pages.



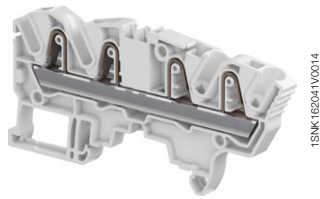
Ground PI-Spring terminal blocks

Description	Color	Type	Order code	Pkg qty	Weight (1 pce) g
Ground Profile aligned with ZK4-3P	Green-yellow	ZK4-PE-3P	1SNK706151R0000	20	15.70

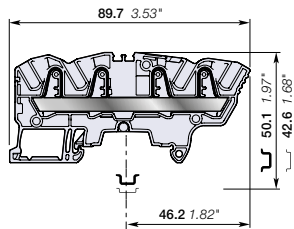
All the technical data for UL/CSA standard and dimensions in inches are in *italics*.

ZK4-4P PI-Spring terminal blocks

Feed-through with 4 connections - 6 mm 0.236 in spacing



ZK4-4P



6 mm 0.236 in spacing

Description

Find all the features of the ZK4 terminal block with the added option of distributing or branching 4 conductors.

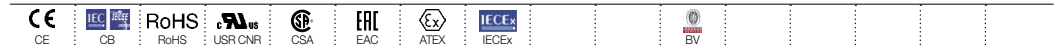
Ordering details

Description	Color	Type	Order code	Pkg qty	Weight (1 pce) g
Feed-through 4 connections	Grey	ZK4-4P	1SNK706012R0000	50	13.80
	Blue	ZK4-4P-BL	1SNK706022R0000	50	13.80
	Orange	ZK4-4P-OR	1SNK706032R0000	50	13.80

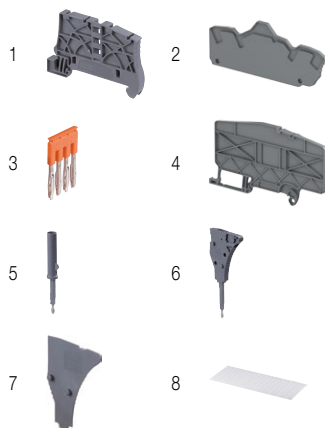
Main technical data

Connecting capacity	IEC	UL - CSA	Mounting instructions
1 conductor per clamp	Rigid - Solid / Stranded Flexible with non insulated ferrule with insulated ferrule	0.5 ... 6 mm ² 0.5 ... 4 mm ² 0.5 ... 4 mm ² 0.5 ... 4 mm ²	26 ... 10 AWG 26 ... 12 AWG 26 ... 12 AWG 26 ... 12 AWG
2 conductors per clamp	Flexible with twin ferrule	0.5 ... 1 mm ²	26 ... 18 AWG
Rated current / Rated cross section	32 A / 4 mm ²	30 A / 10 AWG	
Rated short-time withstand current (1s)	480 A		
Short Circuit Current Rating (with specific conditions)		100 kA	
Rated voltage	1000 V	600 V	
Impulse withstand voltage	8000 V		
Protection	IP20	NEMA 1	
Increased safety Ex e	693 V 29 A IEC/EN 60079-7 - IM2 II 2 GD Ex eb I/II/III		

The connecting capacity data for one Rigid - Solid / Stranded - Flexible conductor (when applicable) is a mandatory information required by IEC, UL and CSA standards. All other data are provided as supplementary information only. For more details, please consult our CB, UL or CSA certificates and technical datasheet available on <http://www.abb.com>

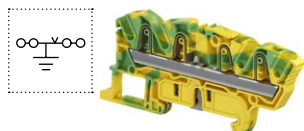


Accessories



Description	Color	Type	Order code	Pkg qty	Weight (1 pce) g
1 End stops	Dark grey	BAZ1	1SNK900002R0000	20	5.30
2 End sections	Dark grey	EK2.5-4P	1SNK705912R0000	20	2.68
3 Jumper bars	Orange	JB6-2	1SNK906302R0000	50	1.30
		3 poles JB6-3	1SNK906303R0000	50	2.10
		4 poles JB6-4	1SNK906304R0000	50	2.90
		5 poles JB6-5	1SNK906305R0000	50	3.60
		10 poles JB6-10	1SNK906310R0000	20	7.40
		50 poles JB6-50	1SNK906350R0000	10	38.10
4 Circuit separators	Dark grey	CS-R3	1SNK900107R0000	20	6.44
5 Test adapters	Dark grey	TP2	1SNK900203R0000	20	1.73
		TP4	1SNK900205R0000	20	2.41
6 Test connectors	Dark grey	TC5-R1	1SNK900201R0000	10	5.23
7 Spacers	Dark grey	ES-TC6	1SNK900105R0000	10	0.80
8 Terminal block markers	White	MC612	1SNK150000R0000	22	10.00
		MC612PA	1SNK159999R0000	20	11.00
	Grey	UMH	1SNK900611R0000	10	0.20

Complete list of accessories is indicated in the terminal block datasheet. Some accessories such as jumper bars may modify the terminal block's ratings: complete information in the accessories catalogue pages.



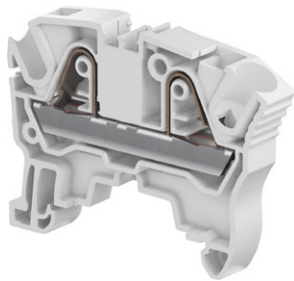
Ground PI-Spring terminal blocks

Description	Color	Type	Order code	Pkg qty	Weight (1 pce) g
Ground Profile aligned with ZK4-4P	Green-yellow	ZK4-PE-4P	1SNK706152R0000	20	18.40

All the technical data for UL/CSA standard and dimensions in inches are in *italics*.

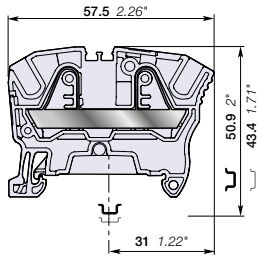
ZK6 PI-Spring terminal blocks

Feed-through - 8 mm 0.315 in spacing



1SNK1620450014

ZK6



8 mm 0.315 in spacing

Description

Combine high performance with compact dimensions:

- 1000 V IEC 600 V UL,
- Opt for the best marking visibility thanks to the up-front, flat marker zone, which lets you mark up to eight digits or increase the font size.

Ordering details

Description	Color	Type	Order code	Pkg qty	Weight (1 pce)
Feed-through 2 connections	Grey	ZK6	1SNK708010R0000	50	11.80
	Blue	ZK6-BL	1SNK708020R0000	50	11.80
	Orange	ZK6-OR	1SNK708030R0000	50	11.80

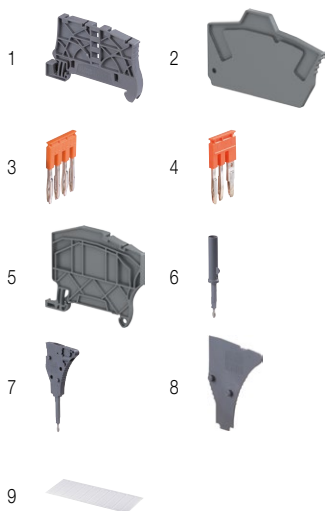
Main technical data

Connecting capacity	IEC	UL - CSA	Mounting instructions		
1 conductor per clamp	Rigid - Solid / Stranded	0.5 ... 10 mm ²	24 ... 8 AWG	Rail	TH 35-7.5, TH 35-15
	Flexible	0.5 ... 6 mm ²	24 ... 10 AWG	Wire stripping length	12.5 mm 0.492 in
	with non insulated ferrule	0.5 ... 6 mm ²	24 ... 10 AWG		
	with insulated ferrule	0.5 ... 6 mm ²	24 ... 10 AWG		
2 conductors per clamp	Flexible with twin ferrule	0.5 ... 1.5 mm ²	24 ... 16 AWG	Tool (for flexible conductor without ferrule)	Flat screwdriver Ø 4 mm Ø 0.157 in
Rated current / Rated cross section		41 A / 6 mm ²	50 A / 8 AWG		
Rated short-time withstand current (1s)		720 A			
Short Circuit Current Rating (with specific conditions)		100 kA			
Rated voltage		1000 V	600 V		
Impulse withstand voltage		8000 V			
Protection		IP20	NEMA 1		
Increased safety Ex e		693 V 37 A IEC/EN 60079-7 - IM2 II 2 GD Ex eb I/IC/IIIC			

The connecting capacity data for one Rigid - Solid / Stranded - Flexible conductor (when applicable) is a mandatory information required by IEC, UL and CSA standards. All other data are provided as supplementary information only. For more details, please consult our CB, UL or CSA certificates and technical datasheet available on <http://www.abb.com>



Accessories



Description	Color	Type	Order code	Pkg qty	Weight (1 pce)		
1 End stops	Dark grey	BAZ1	1SNK900002R0000	20	5.30		
2 End sections	Dark grey	EK2.5	1SNK705910R0000	20	1.76		
3 Jumper bars	Orange	2 poles	JB8-2	1SNK908302R0000	50	2.70	
		3 poles	JB8-3	1SNK908303R0000	50	4.10	
		4 poles	JB8-4	1SNK908304R0000	50	5.60	
		5 poles	JB8-5	1SNK908305R0000	40	7.00	
		10 poles	JB8-10	1SNK908310R0000	20	14.20	
4 Cross spacing jumpers	Orange	JB85-3	1SNK900603R0000	10	2.80		
5 Circuit separators	3 mm	0.118 in	Dark grey	CS-R2	1SNK900106R0000	20	3.84
6 Test adapters	Dark grey	For test plugs DIA 2 mm 0.079 in	TP2	1SNK900203R0000	20	1.73	
		For test plugs DIA 4 mm 0.157 in	TP4	1SNK900205R0000	20	2.41	
7 Test connectors	End module, 5.2 mm 0.205 in	Dark grey	TC5-R1	1SNK900201R0000	10	5.23	
8 Spacers	2.8 mm 0.110 in	Dark grey	ES-TC8	1SNK900104R0000	10	1.35	
9 Terminal block markers	White	MC812	1SNK160000R0000	22	10.00		
		MC812PA	1SNK169999R0000	20	14.00		
	Universal wire markers holder	Grey	UMH	1SNK900611R0000	10	0.20	

Complete list of accessories is indicated in the terminal block datasheet. Some accessories such as jumper bars may modify the terminal block's ratings: complete information in the accessories catalogue pages.

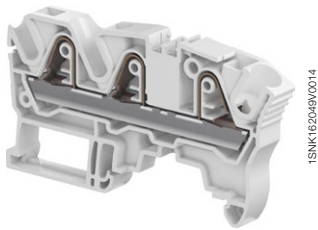
Ground PI-Spring terminal blocks

Description	Color	Type	Order code	Pkg qty	Weight (1 pce)
Ground Profile aligned with ZK6	Green-yellow	ZK6-PE	1SNK708150R0000	20	20.30

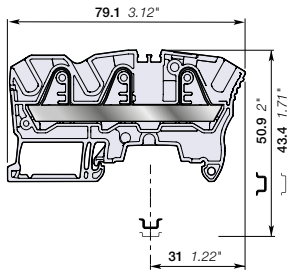
All the technical data for UL/CSA standard and dimensions in inches are in *italics*.

ZK6-3P PI-Spring terminal blocks

Feed-through with 3 connections - 8 mm 0.315 in spacing



ZK6-3P



8 mm 0.315 in spacing

Description

Find all the features of the ZK6 terminal block with the added option of distributing or branching 3 conductors.

Ordering details

Description	Color	Type	Order code	Pkg qty	Weight (1 pce) g
Feed-through 3 connections	Grey	ZK6-3P	1SNK708011R0000	50	16.70
	Blue	ZK6-3P-BL	1SNK708021R0000	50	16.70
	Orange	ZK6-3P-OR	1SNK708031R0000	50	16.70

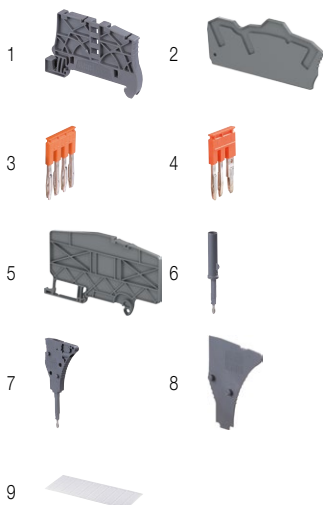
Main technical data

Connecting capacity	IEC	UL - CSA	Mounting instructions
1 conductor per clamp	Rigid - Solid / Stranded Flexible with non insulated ferrule with insulated ferrule	0.5 ... 10 mm ² 0.5 ... 6 mm ² 0.5 ... 6 mm ² 0.5 ... 6 mm ²	24 ... 8 AWG 24 ... 10 AWG 24 ... 10 AWG 24 ... 10 AWG
2 conductors per clamp	Flexible with twin ferrule	0.5 ... 1.5 mm ²	24 ... 16 AWG
Rated current / Rated cross section	41 A / 6 mm ²	50 A / 8 AWG	
Rated short-time withstand current (1s)	720 A		
Short Circuit Current Rating (with specific conditions)		100 kA	
Rated voltage	1000 V	600 V	
Impulse withstand voltage	8000 V		
Protection	IP20	NEMA 1	
Increased safety Ex e	693 V 37 A IEC/EN 60079-7 - IM2 II 2 GD Ex eb I/II/III		

The connecting capacity data for one Rigid - Solid / Stranded - Flexible conductor (when applicable) is a mandatory information required by IEC, UL and CSA standards. All other data are provided as supplementary information only. For more details, please consult our CB, UL or CSA certificates and technical datasheet available on <http://www.abb.com>



Accessories



Description	Color	Type	Order code	Pkg qty	Weight (1 pce) g	
1 End stops	Dark grey	BAZ1	1SNK900002R0000	20	5.30	
2 End sections	Dark grey	EK6-3P	1SNK708911R0000	20	2.79	
3 Jumper bars	Orange	2 poles	JB8-2	1SNK908302R0000	50	2.70
		3 poles	JB8-3	1SNK908303R0000	50	4.10
		4 poles	JB8-4	1SNK908304R0000	50	5.60
		5 poles	JB8-5	1SNK908305R0000	40	7.00
		10 poles	JB8-10	1SNK908310R0000	20	14.20
4 Cross spacing jumpers	Orange	JB85-3	1SNK900603R0000	10	2.80	
5 Circuit separators	Dark grey	CS-R3	1SNK900107R0000	20	6.44	
6 Test adapters	Dark grey	For test plugs DIA 2 mm 0.079 in	TP2	1SNK900203R0000	20	1.73
		For test plugs DIA 4 mm 0.157 in	TP4	1SNK900205R0000	20	2.41
7 Test connectors	Dark grey	TC5-R1	1SNK900201R0000	10	5.23	
8 Spacers	Dark grey	ES-TC8	1SNK900104R0000	10	1.35	
9 Terminal block markers	White	MC812	1SNK160000R0000	22	10.00	
		MC812PA	1SNK169999R0000	20	14.00	
	Grey	UMH	1SNK900611R0000	10	0.20	

Complete list of accessories is indicated in the terminal block datasheet. Some accessories such as jumper bars may modify the terminal block's ratings: complete information in the accessories catalogue pages.

Ground PI-Spring terminal blocks

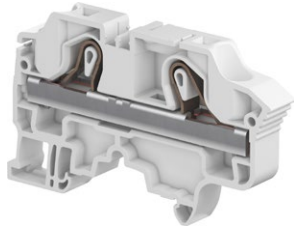


Description	Color	Type	Order code	Pkg qty	Weight (1 pce) g
Ground Profile aligned with ZK6-3P	Green-yellow	ZK6-PE-3P	1SNK708151R0000	20	21.50

All the technical data for UL/CSA standard and dimensions in inches are in *italics*.

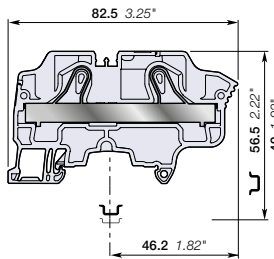
ZK10 PI-Spring terminal blocks

Feed-through - 10 mm 0.394 in spacing



1SNK162072V0014

ZK10



10 mm 0.394 in spacing

Description

Combine high performance with compact dimensions:

- 1000 V IEC 600 V UL,
- 57 A IEC 65 A UL.

Ordering details

Description	Color	Type	Order code	Pkg qty	Weight (1 pce) g
Feed-through 2 connections	Grey <input type="checkbox"/>	ZK10	1SNK710010R0000	20	27.20
	Blue <input type="checkbox"/>	ZK10-BL	1SNK710020R0000	20	27.20
	Orange <input type="checkbox"/>	ZK10-OR	1SNK710030R0000	20	27.20

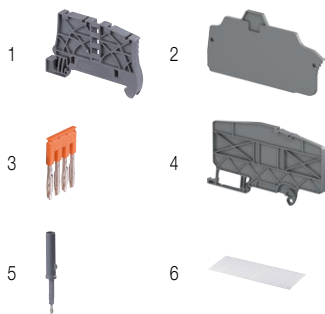
Main technical data

Connecting capacity	IEC	UL - CSA	Mounting instructions
1 conductor per clamp	Rigid - Solid / Stranded	0.5 ... 16 mm ²	20 ... 6 AWG
	Flexible	0.5 ... 10 mm ²	20 ... 8 AWG
	with non insulated ferrule	0.5 ... 10 mm ²	20 ... 8 AWG
	with insulated ferrule	0.5 ... 10 mm ²	20 ... 8 AWG
2 conductors per clamp	Flexible with twin ferrule	0.5 ... 4 mm ²	20 ... 12 AWG
Rated current / Rated cross section		57 A / 10 mm ²	55 A / 6 AWG
Rated short-time withstand current (1s)		1200 A	
Short Circuit Current Rating (with specific conditions)			100 kA
Rated voltage		1000 V	600 V
Impulse withstand voltage		8000 V	
Protection		IP20	NEMA 1
Increased safety Ex e		693 V 51 A IEC/EN 60079-7 - IM2 II 2 GD Ex eb I/IC/IIIC	

The connecting capacity data for one Rigid - Solid / Stranded - Flexible conductor (when applicable) is a mandatory information required by IEC, UL and CSA standards. All other data are provided as supplementary information only. For more details, please consult our CB, UL or CSA certificates and technical datasheet available on <http://www.abb.com>

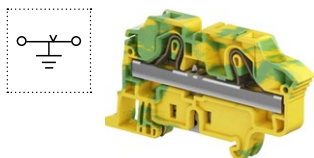


Accessories



Description	Color	Type	Order code	Pkg qty	Weight (1 pce) g	
1 End stops 5.2 mm 0.205 in	Dark grey <input type="checkbox"/>	BAZ1	1SNK900002R0000	20	5.30	
2 End sections 2 mm 0.079 in	Dark grey <input type="checkbox"/>	EK10	1SNK710910R0000	20	3.26	
3 Jumper bars 2 poles 76 A	Orange <input type="checkbox"/>	JB10-2	1SNK910302R0000	50	4.60	
		JB10-3	1SNK910303R0000	50	7.10	
		JB10-4	1SNK910304R0000	40	9.40	
		JB10-5	1SNK910305R0000	30	12.00	
		JB10-10	1SNK910310R0000	20	24.00	
4 Circuit separators 3 mm 0.118 in	Dark grey <input type="checkbox"/>	CS-R3	1SNK900107R0000	20	6.44	
5 Test adapters	Dark grey <input type="checkbox"/>	For test plugs DIA 2 mm 0.079 in	TP2	1SNK900203R0000	20	1.73
		For test plugs DIA 4 mm 0.157 in	TP4	1SNK900205R0000	20	2.41
6 Terminal block markers	White <input type="checkbox"/>	MC812	1SNK160000R0000	22	10.00	
		MC812PA	1SNK169999R0000	20	14.00	
	Universal wire markers holder	Grey <input type="checkbox"/>	UMH	1SNK900611R0000	10	0.20

Complete list of accessories is indicated in the terminal block datasheet. Some accessories such as jumper bars may modify the terminal block's ratings: complete information in the accessories catalogue pages.



Ground PI-Spring terminal blocks

Description	Color	Type	Order code	Pkg qty	Weight (1 pce) g
Ground Profile aligned with ZK10	Green-yellow <input type="checkbox"/>	ZK10-PE	1SNK710150R0000	20	36.20

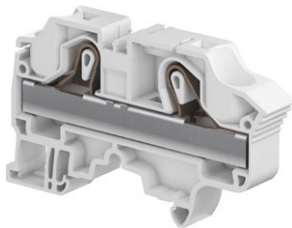
All the technical data for UL/CSA standard and dimensions in inches are in italic.

ZK16 PI-Spring terminal blocks

Feed-through - 12 mm 0.472 in spacing

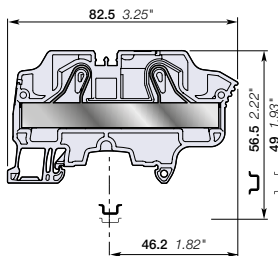


16 mm²
4 AWG



1SNK1620250014

ZK16



12 mm 0.472 in spacing

Description

Combine high performance with compact dimensions:

- 1000 V IEC 600 V UL,
- 76 A IEC 85 A UL.

Ordering details

Description	Color	Type	Order code	Pkg qty	Weight (1 pce) g
Feed-through 2 connections	Grey <input type="checkbox"/>	ZK16	1SNK712010R0000	20	33.80
	Blue <input type="checkbox"/>	ZK16-BL	1SNK712020R0000	20	33.80

Main technical data

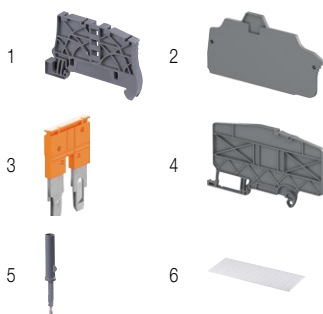
Connecting capacity		IEC	UL - CSA	Rail	Mounting instructions
1 conductor per clamp	Rigid - Solid / Stranded	0.5 ... 25 mm ²	20 ... 4 AWG	Wire stripping length	
	Flexible	0.5 ... 16 mm ²	20 ... 4 AWG		
	with non insulated ferrule	0.5 ... 16 mm ²	20 ... 6 AWG		
2 conductors per clamp	with insulated ferrule	0.5 ... 16 mm ²	20 ... 6 AWG	Tool (for flexible conductor without ferrule)	
	Flexible with twin ferrule	0.5 ... 6 mm ²	20 ... 10 AWG		
Rated current / Rated cross section		76 A / 16 mm ²	75 A / 4 AWG		
Rated short-time withstand current (1s)		1960 A			
Short Circuit Current Rating (with specific conditions)			100 kA		
Rated voltage		1000 V	600 V		
Impulse withstand voltage		8000 V			
Protection		IP20	NEMA 1		
Increased safety Ex e		693 V 69 A IEC/EN 60079-7 - IM2 II 2 GD Ex eb I/II/III/C			

The connecting capacity data for one Rigid - Solid / Stranded - Flexible conductor (when applicable) is a mandatory information required by IEC, UL and CSA standards.

All other data are provided as supplementary information only. For more details, please consult our CB, UL or CSA certificates and technical datasheet available on <http://www.abb.com>



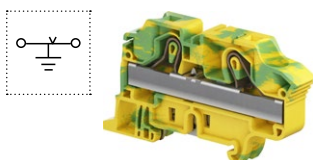
Accessories



Description	Color	Type	Order code	Pkg qty	Weight (1 pce) g	
1 End stops	Dark grey <input type="checkbox"/>	BAZ1	1SNK900002R0000	20	5.30	
2 End sections	Dark grey <input type="checkbox"/>	EK10	1SNK710910R0000	20	3.26	
3 Jumper bars	Orange <input type="checkbox"/>	2 poles	JB12-2	1SNK912302R0000	50	4.86
		3 poles	JB12-3	1SNK912303R0000	50	7.55
		5 poles	JB12-5	1SNK912305R0000	20	12.93
4 Circuit separators	Dark grey <input type="checkbox"/>	CS-R3	1SNK900107R0000	20	6.44	
5 Test adapters	Dark grey <input type="checkbox"/>	For test plugs DIA 2 mm 0.079 in	TP2	1SNK900203R0000	20	1.73
		For test plugs DIA 4 mm 0.157 in	TP4	1SNK900205R0000	20	2.41
6 Terminal block markers	White <input type="checkbox"/>	MC812	1SNK160000R0000	22	10.00	
		MC812PA	1SNK169999R0000	20	14.00	
	Grey <input type="checkbox"/>	UMH	1SNK900611R0000	10	0.20	

Complete list of accessories is indicated in the terminal block datasheet.

Some accessories such as jumper bars may modify the terminal block's ratings: complete information in the accessories catalogue pages.



Ground PI-Spring terminal blocks

Description	Color	Type	Order code	Pkg qty	Weight (1 pce) g
Ground Profile aligned with ZK16	Green-yellow <input type="checkbox"/>	ZK16-PE	1SNK712150R0000	20	47.00

All the technical data for UL/CSA standard and dimensions in inches are in *italics*.

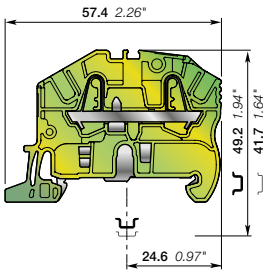
ZK2.5-PE PI-Spring terminal blocks

Ground - 5.2 mm 0.205 in spacing



1SNK162081V0014

ZK2.5-PE



5.2 mm 0.205 in spacing

Description

Improve the safety of your installation in the event of a short-circuit thanks to our screwless rail contact:

- rail contact non operator dependent,
- Performances above the requirements of the IEC 60947-7-2 terminal block standard,
- Secured snap on or off the rail,
- profile aligned with ZK2.5.

Ordering details

Description	Color	Type	Order code	Pkg qty	Weight (1 pce) g
Ground 2 connections	Green-yellow	ZK2.5-PE	1SNK705150R0000	20	10.00

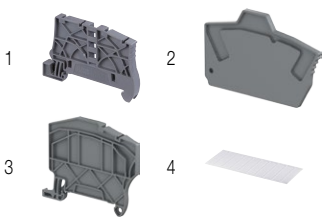
Main technical data

Connecting capacity		IEC	UL - CSA	Mounting instructions	
1 conductor per clamp	Rigid - Solid / Stranded	0.2 ... 4 mm ²	26 ... 12 AWG	Rail	TH 35-7.5, TH 35-15
	Flexible	0.22 ... 2.5 mm ²		Wire stripping length	11 mm 0.433 in
	with non insulated ferrule	0.22 ... 2.5 mm ²	26 ... 14 AWG		
	with insulated ferrule	0.22 ... 2.5 mm ²	26 ... 14 AWG		
Rated cross section		2.5 mm ²	12 AWG	Tool (for flexible conductor without ferrule)	Flat screwdriver Ø 3.5 mm Ø 0.138 in
Rated short-time withstand current (1s)		300 A	396 A		
Protection		IP20	NEMA 1		
Explosive atmosphere classification		IM2 II 2 GD Ex eb I/IC/IIIC			

The connecting capacity data for one Rigid - Solid / Stranded - Flexible conductor (when applicable) is a mandatory information required by IEC, UL and CSA standards. All other data are provided as supplementary information only. For more details, please consult our CB, UL or CSA certificates and technical datasheet available on <http://www.abb.com>



Accessories



Description	Color	Type	Order code	Pkg qty	Weight (1 pce) g
1 End stops 5.2 mm 0.205 in	Dark grey	BAZ1	1SNK900002R0000	20	5.30
2 End sections 2 mm 0.079 in	Dark grey	EK2.5	1SNK705910R0000	20	1.76
3 Circuit separators 3 mm 0.118 in	Dark grey	CS-R2	1SNK900106R0000	20	3.84
4 Terminal block markers	White	MC512	1SNK140000R0000	22	9.00
		MC512PA	1SNK149999R0000	20	10.00
	Universal wire markers holder	Grey	UMH	1SNK900611R0000	10

Complete list of accessories is indicated in the terminal block datasheet. Some accessories such as jumper bars may modify the terminal block's ratings: complete information in the accessories catalogue pages.

All the technical data for UL/CSA standard and dimensions in inches are in *italics*.

ZK2.5-PE-3P PI-Spring terminal blocks

Ground with 3 connections - 5.2 mm 0.205 in spacing

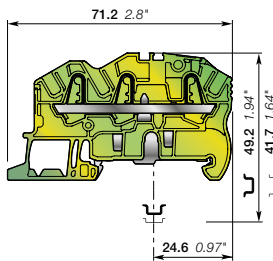


2.5 mm²
12 AWG



1SNK162089/0014

ZK2.5-PE-3P



5.2 mm 0.205 in spacing

Description

Improve the safety of your installation in the event of a short-circuit thanks to our screwless rail contact:

- rail contact non operator dependent,
- Performances above the requirements of the IEC 60947-7-2 terminal block standard,
- Secured snap on or off the rail,
- profile aligned with ZK2.5-3P.

Ordering details

Description	Color	Type	Order code	Pkg qty	Weight (1 pce) g
Ground 3 connections	Green-yellow	ZK2.5-PE-3P	1SNK705151R0000	20	11.90

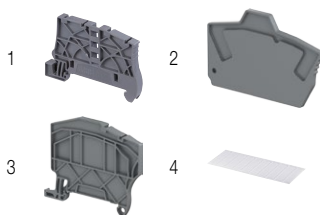
Main technical data

Connecting capacity		IEC	UL - CSA	Mounting instructions	
1 conductor per clamp	Rigid - Solid / Stranded	0.2 ... 4 mm ²	26 ... 12 AWG	Rail	TH 35-7.5, TH 35-15
	Flexible	0.22 ... 2.5 mm ²	26 ... 14 AWG	Wire stripping length	11 mm 0.433 in
	with non insulated ferrule	0.22 ... 2.5 mm ²	26 ... 14 AWG		
	with insulated ferrule	0.22 ... 2.5 mm ²	26 ... 14 AWG		
Rated cross section		2.5 mm ²	12 AWG	Tool (for flexible conductor without ferrule)	Flat screwdriver Ø 3.5 mm Ø 0.138 in
Rated short-time withstand current (1s)		300 A	396 A		
Protection		IP20	NEMA 1		
Explosive atmosphere classification		IM2 II 2 GD Ex eb I/IC/IIIC			

The connecting capacity data for one Rigid - Solid / Stranded - Flexible conductor (when applicable) is a mandatory information required by IEC, UL and CSA standards. All other data are provided as supplementary information only. For more details, please consult our CB, UL or CSA certificates and technical datasheet available on <http://www.abb.com>



Accessories



Description	Color	Type	Order code	Pkg qty	Weight (1 pce) g
1 End stops 5.2 mm 0.205 in	Dark grey	BAZ1	1SNK900002R0000	20	5.30
2 End sections 2 mm 0.079 in	Dark grey	EK2.5	1SNK705910R0000	20	1.76
3 Circuit separators 3 mm 0.118 in	Dark grey	CS-R3	1SNK900107R0000	20	6.44
4 Terminal block markers	White	MC512	1SNK140000R0000	22	9.00
		MC512PA	1SNK149999R0000	20	10.00
	Grey	UMH	1SNK900611R0000	10	0.20

Complete list of accessories is indicated in the terminal block datasheet. Some accessories such as jumper bars may modify the terminal block's ratings: complete information in the accessories catalogue pages.

All the technical data for UL/CSA standard and dimensions in inches are in italic.

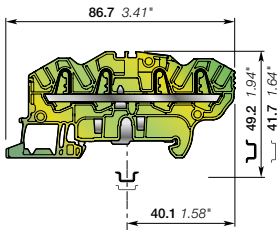
ZK2.5-PE-4P PI-Spring terminal blocks

Ground with 4 connections - 5.2 mm 0.205 in spacing



1SNK1620320014

ZK2.5-PE-4P



5.2 mm 0.205 in spacing

Description

Improve the safety of your installation in the event of a short-circuit thanks to our screwless rail contact:

- rail contact non operator dependent,
- Performances above the requirements of the IEC 60947-7-2 terminal block standard,
- Secured snap on or off the rail,
- profile aligned with ZK2.5-4P.

Ordering details

Description	Color	Type	Order code	Pkg qty	Weight (1 pce) g
Ground 4 connections	Green-yellow	ZK2.5-PE-4P	1SNK705152R0000	20	13.60

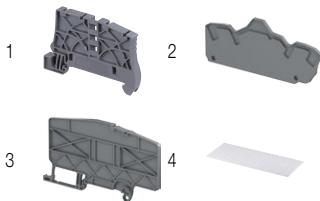
Main technical data

Connecting capacity		IEC	UL - CSA	Mounting instructions	
1 conductor per clamp	Rigid - Solid / Stranded	0.2 ... 4 mm ²	26 ... 12 AWG	Rail	TH 35-7.5, TH 35-15
	Flexible	0.22 ... 2.5 mm ²		Wire stripping length	11 mm 0.433 in
	with non insulated ferrule	0.22 ... 2.5 mm ²	26 ... 14 AWG	Tool (for flexible conductor without ferrule)	Flat screwdriver Ø 3.5 mm Ø 0.138 in
	with insulated ferrule	0.22 ... 2.5 mm ²	26 ... 14 AWG		
Rated cross section		2.5 mm ²	12 AWG		
Rated short-time withstand current (1s)		300 A	396 A		
Protection		IP20	NEMA 1		
Explosive atmosphere classification		IM2 II 2 GD Ex eb I/IC/IIIC			

The connecting capacity data for one Rigid - Solid / Stranded - Flexible conductor (when applicable) is a mandatory information required by IEC, UL and CSA standards. All other data are provided as supplementary information only. For more details, please consult our CB, UL or CSA certificates and technical datasheet available on <http://www.abb.com>



Accessories



Description	Color	Type	Order code	Pkg qty	Weight (1 pce) g
1 End stops 5.2 mm 0.205 in	Dark grey	BAZ1	1SNK900002R0000	20	5.30
2 End sections 2 mm 0.079 in	Dark grey	EK2.5-4P	1SNK705912R0000	20	2.68
3 Circuit separators 3 mm 0.118 in	Dark grey	CS-R3	1SNK900107R0000	20	6.44
4 Terminal block markers	White	MC512	1SNK140000R0000	22	9.00
		MC512PA	1SNK149999R0000	20	10.00
	Grey	UMH	1SNK900611R0000	10	0.20

Complete list of accessories is indicated in the terminal block datasheet. Some accessories such as jumper bars may modify the terminal block's ratings: complete information in the accessories catalogue pages.

All the technical data for UL/CSA standard and dimensions in inches are in italic.

ZK4-PE PI-Spring terminal blocks

Ground - 6 mm 0.236 in spacing

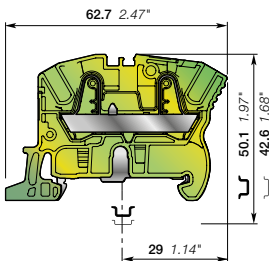


4 mm²
10 AWG



1SNK16206R00014

ZK4-PE



6 mm 0.236 in spacing

Description

Improve the safety of your installation in the event of a short-circuit thanks to our screwless rail contact:

- rail contact non operator dependent,
- Performances above the requirements of the IEC 60947-7-2 terminal block standard,
- Secured snap on or off the rail,
- profile aligned with ZK4.

Ordering details

Description	Color	Type	Order code	Pkg qty	Weight (1 pce) g
Ground 2 connections	Green-yellow	ZK4-PE	1SNK706150R0000	20	12.60

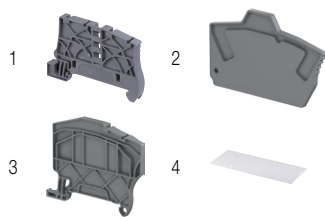
Main technical data

Connecting capacity		IEC	UL - CSA	Mounting instructions	
1 conductor per clamp	Rigid - Solid / Stranded	0.5 ... 6 mm ²	26 ... 10 AWG	Rail	TH 35-7.5, TH 35-15
	Flexible	0.5 ... 4 mm ²	26 ... 12 AWG	Wire stripping length	12.5 mm 0.492 in
	with non insulated ferrule	0.5 ... 4 mm ²	26 ... 12 AWG		
	with insulated ferrule	0.5 ... 4 mm ²	26 ... 12 AWG		
Rated cross section		4 mm ²	10 AWG	Tool (for flexible conductor without ferrule)	Flat screwdriver Ø 3.5 mm Ø 0.138 in
Rated short-time withstand current (1s)		480 A	636 A		
Protection		IP20	NEMA 1		
Explosive atmosphere classification		IM2 II 2 GD Ex eb I/IC/IIIC			

The connecting capacity data for one Rigid - Solid / Stranded - Flexible conductor (when applicable) is a mandatory information required by IEC, UL and CSA standards. All other data are provided as supplementary information only. For more details, please consult our CB, UL or CSA certificates and technical datasheet available on <http://www.abb.com>



Accessories



Description	Color	Type	Order code	Pkg qty	Weight (1 pce) g
1 End stops 5.2 mm 0.205 in	Dark grey	BAZ1	1SNK900002R0000	20	5.30
2 End sections 2 mm 0.079 in	Dark grey	EK2.5	1SNK705910R0000	20	1.76
3 Circuit separators 3 mm 0.118 in	Dark grey	CS-R2	1SNK900106R0000	20	3.84
4 Terminal block markers	White	MC612	1SNK150000R0000	22	10.00
	Grey	MC612PA	1SNK159999R0000	20	11.00
Universal wire markers holder	Grey	UMH	1SNK900611R0000	10	0.20

Complete list of accessories is indicated in the terminal block datasheet. Some accessories such as jumper bars may modify the terminal block's ratings: complete information in the accessories catalogue pages.

All the technical data for UL/CSA standard and dimensions in inches are in italic.

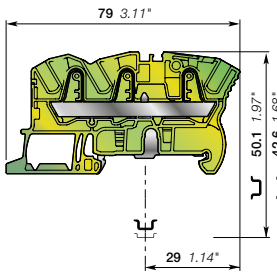
ZK4-PE-3P PI-Spring terminal blocks

Ground with 3 connections - 6 mm 0.236 in spacing



1SNK1620400014

ZK4-PE-3P



6 mm 0.236 in spacing

Description

Improve the safety of your installation in the event of a short-circuit thanks to our screwless rail contact:

- rail contact non operator dependent,
- Performances above the requirements of the IEC 60947-7-2 terminal block standard,
- Secured snap on or off the rail,
- profile aligned with ZK4-3P.

Ordering details

Description	Color	Type	Order code	Pkg qty	Weight (1 pce) g
Ground 3 connections	Green-yellow	ZK4-PE-3P	1SNK706151R0000	20	15.70

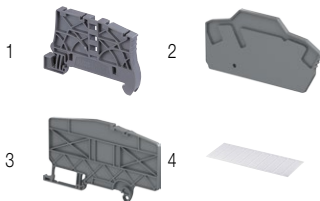
Main technical data

Connecting capacity	IEC	UL - CSA	Mounting instructions
1 conductor per clamp			Rail
Rigid - Solid / Stranded	0.5 ... 6 mm ²	26 ... 10 AWG	Wire stripping length
Flexible	0.5 ... 4 mm ²		
with non insulated ferrule	0.5 ... 4 mm ²	26 ... 12 AWG	
with insulated ferrule	0.5 ... 4 mm ²	26 ... 12 AWG	
			Tool (for flexible conductor without ferrule)
Rated cross section	4 mm ²	10 AWG	Flat screwdriver Ø 3.5 mm Ø 0.138 in
Rated short-time withstand current (1s)	480 A	636 A	
Protection	IP20	NEMA 1	
Explosive atmosphere classification	IM2 II 2 GD Ex eb I/IC/IIIC		

The connecting capacity data for one Rigid - Solid / Stranded - Flexible conductor (when applicable) is a mandatory information required by IEC, UL and CSA standards. All other data are provided as supplementary information only. For more details, please consult our CB, UL or CSA certificates and technical datasheet available on <http://www.abb.com>



Accessories



Description	Color	Type	Order code	Pkg qty	Weight (1 pce) g
1 End stops	Dark grey	BAZ1	1SNK900002R0000	20	5.30
2 End sections	Dark grey	EK2.5-3P	1SNK705911R0000	20	2.42
3 Circuit separators	Dark grey	CS-R3	1SNK900107R0000	20	6.44
4 Terminal block markers	White	MC612	1SNK150000R0000	22	10.00
	Grey	MC612PA	1SNK159999R0000	20	11.00
	Grey	UMH	1SNK900611R0000	10	0.20

Complete list of accessories is indicated in the terminal block datasheet. Some accessories such as jumper bars may modify the terminal block's ratings: complete information in the accessories catalogue pages.

All the technical data for UL/CSA standard and dimensions in inches are in italic.

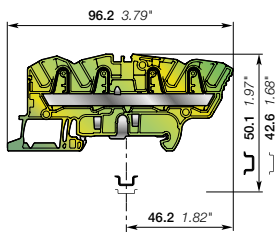
ZK4-PE-4P PI-Spring terminal blocks

Ground with 4 connections - 6 mm 0.236 in spacing



1SNK162044V0014

ZK4-PE-4P



6 mm 0.236 in spacing

Description

Improve the safety of your installation in the event of a short-circuit thanks to our screwless rail contact:

- rail contact non operator dependent,
- Performances above the requirements of the IEC 60947-7-2 terminal block standard,
- Secured snap on or off the rail,
- profile aligned with ZK4-4P.

Ordering details

Description	Color	Type	Order code	Pkg qty	Weight (1 pce) g
Ground 4 connections	Green-yellow	ZK4-PE-4P	1SNK706152R0000	20	18.40

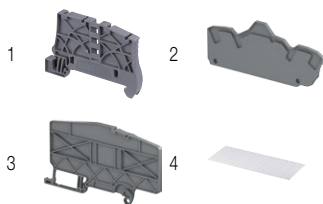
Main technical data

Connecting capacity		IEC	UL - CSA	Rail		
1 conductor per clamp	Rigid - Solid / Stranded	0.5 ... 6 mm²	26 ... 10 AWG	Wire stripping length		TH 35-7.5, TH 35-15
	Flexible	0.5 ... 4 mm²	26 ... 12 AWG		12.5 mm 0.492 in	
	with non insulated ferrule	0.5 ... 4 mm²	26 ... 12 AWG	Tool (for flexible conductor without ferrule)		
	with insulated ferrule	0.5 ... 4 mm²	26 ... 12 AWG			
Rated cross section		4 mm²	10 AWG			
Rated short-time withstand current (1s)		480 A	636 A			
Protection		IP20	NEMA 1			
Explosive atmosphere classification		IM2 II 2 GD Ex eb I/IC/IIIC				

The connecting capacity data for one Rigid - Solid / Stranded - Flexible conductor (when applicable) is a mandatory information required by IEC, UL and CSA standards. All other data are provided as supplementary information only. For more details, please consult our CB, UL or CSA certificates and technical datasheet available on <http://www.abb.com>



Accessories



Description	Color	Type	Order code	Pkg qty	Weight (1 pce) g
1 End stops 5.2 mm 0.205 in	Dark grey	BAZ1	1SNK900002R0000	20	5.30
2 End sections 2 mm 0.079 in	Dark grey	EK2.5-4P	1SNK705912R0000	20	2.68
3 Circuit separators 3 mm 0.118 in	Dark grey	CS-R3	1SNK900107R0000	20	6.44
4 Terminal block markers	White	MC612	1SNK150000R0000	22	10.00
	Grey	MC612PA	1SNK159999R0000	20	11.00
Universal wire markers holder	Grey	UMH	1SNK900611R0000	10	0.20

Complete list of accessories is indicated in the terminal block datasheet. Some accessories such as jumper bars may modify the terminal block's ratings: complete information in the accessories catalogue pages.

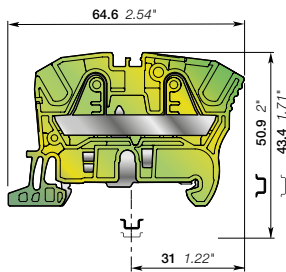
All the technical data for UL/CSA standard and dimensions in inches are in italic.

ZK6-PE PI-Spring terminal blocks

Ground - 8 mm 0.315 in spacing



ZK6-PE



8 mm 0.315 in spacing

Description

Improve the safety of your installation in the event of a short-circuit thanks to our screwless rail contact:

- rail contact non operator dependent,
- Performances above the requirements of the IEC 60947-7-2 terminal block standard,
- Secured snap on or off the rail,
- profile aligned with ZK6.

Ordering details

Description	Color	Type	Order code	Pkg qty	Weight (1 pce) g
Ground 2 connections	Green-yellow	ZK6-PE	1SNK708150R0000	20	20.30

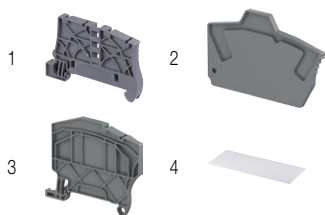
Main technical data

Connecting capacity		IEC	UL - CSA	Mounting instructions	
1 conductor per clamp	Rigid - Solid / Stranded	0.5 ... 10 mm ²	24 ... 8 AWG	Rail	TH 35-7.5, TH 35-15
	Flexible	0.5 ... 6 mm ²	24 ... 10 AWG	Wire stripping length	12.5 mm 0.492 in
	with non insulated ferrule	0.5 ... 6 mm ²	24 ... 10 AWG		
	with insulated ferrule	0.5 ... 6 mm ²	24 ... 10 AWG		
Rated cross section		6 mm ²	8 AWG	Tool (for flexible conductor without ferrule)	Flat screwdriver Ø 4 mm Ø 0.157 in
Rated short-time withstand current (1s)		720 A	1008 A		
Protection		IP20	NEMA 1		
Explosive atmosphere classification		IM2 II 2 GD Ex eb I/IC/IIIC			

The connecting capacity data for one Rigid - Solid / Stranded - Flexible conductor (when applicable) is a mandatory information required by IEC, UL and CSA standards. All other data are provided as supplementary information only. For more details, please consult our CB, UL or CSA certificates and technical datasheet available on <http://www.abb.com>



Accessories



Description	Color	Type	Order code	Pkg qty	Weight (1 pce) g
1 End stops	Dark grey	BAZ1	1SNK900002R0000	20	5.30
2 End sections	Dark grey	EK2.5	1SNK705910R0000	20	1.76
3 Circuit separators	Dark grey	CS-R2	1SNK900106R0000	20	3.84
4 Terminal block markers	White	MC812	1SNK160000R0000	22	10.00
		MC812PA	1SNK169999R0000	20	14.00
	Grey	UMH	1SNK900611R0000	10	0.20

Complete list of accessories is indicated in the terminal block datasheet. Some accessories such as jumper bars may modify the terminal block's ratings: complete information in the accessories catalogue pages.

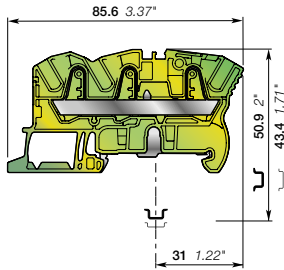
All the technical data for UL/CSA standard and dimensions in inches are in italic.

ZK6-PE-3P PI-Spring terminal blocks

Ground with 3 connections - 8 mm 0.315 in spacing



ZK6-PE-3P



8 mm 0.315 in spacing

Description

Improve the safety of your installation in the event of a short-circuit thanks to our screwless rail contact:

- rail contact non operator dependent,
- Performances above the requirements of the IEC 60947-7-2 terminal block standard,
- Secured snap on or off the rail,
- profile aligned with ZK6-3P.

Ordering details

Description	Color	Type	Order code	Pkg qty	Weight (1 pce) g
Ground 3 connections	Green-yellow	ZK6-PE-3P	1SNK708151R0000	20	21.50

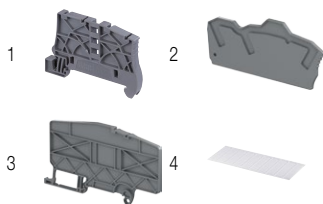
Main technical data

Connecting capacity		IEC	UL - CSA	Mounting instructions	
1 conductor per clamp	Rigid - Solid / Stranded	0.5 ... 10 mm ²	24 ... 8 AWG	Rail	TH 35-7.5, TH 35-15
	Flexible	0.5 ... 6 mm ²	24 ... 10 AWG	Wire stripping length	12.5 mm 0.492 in
	with non insulated ferrule	0.5 ... 6 mm ²	24 ... 10 AWG		
	with insulated ferrule	0.5 ... 6 mm ²	24 ... 10 AWG		
Rated cross section		6 mm ²	8 AWG	Tool (for flexible conductor without ferrule)	Flat screwdriver Ø 4 mm Ø 0.157 in
Rated short-time withstand current (1s)		720 A	1008 A		
Protection		IP20	NEMA 1		
Explosive atmosphere classification		IM2 II 2 GD Ex eb I/IC/IIIC			

The connecting capacity data for one Rigid - Solid / Stranded - Flexible conductor (when applicable) is a mandatory information required by IEC, UL and CSA standards. All other data are provided as supplementary information only. For more details, please consult our CB, UL or CSA certificates and technical datasheet available on <http://www.abb.com>



Accessories



Description	Color	Type	Order code	Pkg qty	Weight (1 pce) g
1 End stops	Dark grey	BAZ1	1SNK900002R0000	20	5.30
2 End sections	Dark grey	EK6-3P	1SNK708911R0000	20	2.79
3 Circuit separators	Dark grey	CS-R3	1SNK900107R0000	20	6.44
4 Terminal block markers	White	MC812	1SNK160000R0000	22	10.00
	Grey	MC812PA	1SNK169999R0000	20	14.00
Universal wire markers holder	Grey	UMH	1SNK900611R0000	10	0.20

Complete list of accessories is indicated in the terminal block datasheet. Some accessories such as jumper bars may modify the terminal block's ratings: complete information in the accessories catalogue pages.

All the technical data for UL/CSA standard and dimensions in inches are in italic.

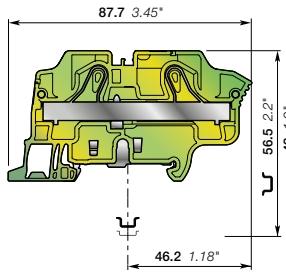
ZK10-PE PI-Spring terminal blocks

Ground - 10 mm 0.394 in spacing



1SNK16204750201

ZK10-PE



10 mm 0.394 in spacing

Description

Improve the safety of your installation in the event of a short-circuit thanks to our screwless rail contact:

- rail contact non operator dependent,
- Performances above the requirements of the IEC 60947-7-2 terminal block standard,
- Secured snap on or off the rail,
- profile aligned with ZK10.

Ordering details

Description	Color	Type	Order code	Pkg qty	Weight (1 pce) g
Ground 2 connections	Green-yellow	ZK10-PE	1SNK710150R0000	20	36.20

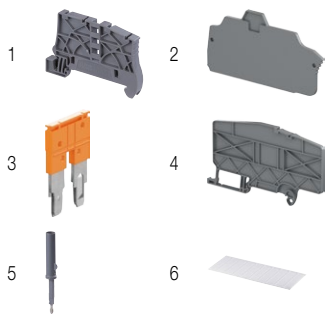
Main technical data

Connecting capacity		IEC	UL - CSA	Mounting instructions	
1 conductor per clamp	Rigid - Solid / Stranded	0.5 ... 16 mm ²	20 ... 6 AWG	Rail	TH 35-7.5, TH 35-15
	Flexible	0.5 ... 10 mm ²		Wire stripping length	15 mm 0.591 in
	with non insulated ferrule	0.5 ... 10 mm ²	20 ... 8 AWG		
	with insulated ferrule	0.5 ... 10 mm ²	20 ... 8 AWG		
Rated cross section		10 mm ²	6 AWG	Tool (for flexible conductor without ferrule)	Flat screwdriver Ø 4 mm Ø 0.157 in
Rated short-time withstand current (1s)		1200 A	1596 A		
Protection		IP20	NEMA 1		
Explosive atmosphere classification		IM2 II 2 GD Ex eb I/IC/IIIC			

The connecting capacity data for one Rigid - Solid / Stranded - Flexible conductor (when applicable) is a mandatory information required by IEC, UL and CSA standards. All other data are provided as supplementary information only. For more details, please consult our CB, UL or CSA certificates and technical datasheet available on <http://www.abb.com>



Accessories



Description	Color	Type	Order code	Pkg qty	Weight (1 pce) g
1 End stops 5.2 mm 0.205 in	Dark grey	BAZ1	1SNK900002R0000	20	5.30
2 End sections 2 mm 0.079 in	Dark grey	EK10	1SNK710910R0000	20	3.26
3 Jumper bars 2 poles 76 A	Orange	JB10-2	1SNK910302R0000	50	4.60
4 Circuit separators 3 mm 0.118 in	Dark grey	CS-R3	1SNK900107R0000	20	6.44
5 Test adapters For test plugs DIA 2 mm 0.079 in For test plugs DIA 4 mm 0.157 in	Dark grey	TP2	1SNK900203R0000	20	1.73
		TP4	1SNK900205R0000	20	2.41
6 Terminal block markers Blank card	White	MC812	1SNK160000R0000	22	10.00
		MC812PA	1SNK169999R0000	20	14.00
	Universal wire markers holder	Grey	UMH	10	0.20

Complete list of accessories is indicated in the terminal block datasheet. Some accessories such as jumper bars may modify the terminal block's ratings: complete information in the accessories catalogue pages.

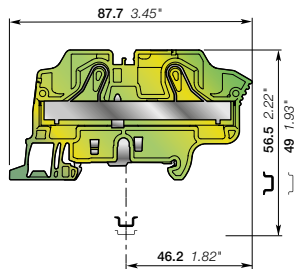
All the technical data for UL/CSA standard and dimensions in inches are in italic.

ZK16-PE PI-Spring terminal blocks

Ground - 12 mm 0.472 in spacing



ZK16-PE



12 mm 0.472 in spacing

Description

Improve the safety of your installation in the event of a short-circuit thanks to our screwless rail contact:

- rail contact non operator dependent,
- Performances above the requirements of the IEC 60947-7-2 terminal block standard,
- Secured snap on or off the rail,
- profile aligned with ZK16.

Ordering details

Description	Color	Type	Order code	Pkg qty	Weight (1 pce) g
Ground 2 connections	Green-yellow	ZK16-PE	1SNK712150R0000	20	47.00

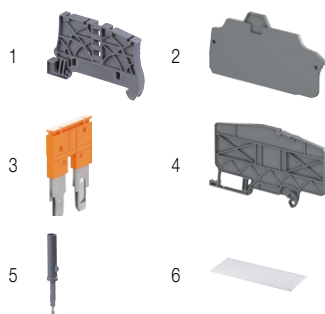
Main technical data

Connecting capacity		IEC	UL - CSA	Rail		
1 conductor per clamp	Rigid - Solid / Stranded	0.5 ... 25 mm ²	20 ... 4 AWG	Wire stripping length		TH 35-7.5, TH 35-15
	Flexible	0.5 ... 16 mm ²	20 ... 6 AWG		15 mm 0.591 in	
	with non insulated ferrule	0.5 ... 16 mm ²	20 ... 6 AWG			
	with insulated ferrule	0.5 ... 16 mm ²	20 ... 6 AWG			
Rated cross section		16 mm ²	4 AWG	Tool (for flexible conductor without ferrule)		Flat screwdriver Ø 4 mm Ø 0.157 in
Rated short-time withstand current (1s)		1960 A	2544 A			
Protection		IP20	NEMA 1			
Explosive atmosphere classification		IM2 II 2 GD Ex eb IIC/IIIC				

The connecting capacity data for one Rigid - Solid / Stranded - Flexible conductor (when applicable) is a mandatory information required by IEC, UL and CSA standards. All other data are provided as supplementary information only. For more details, please consult our CB, UL or CSA certificates and technical datasheet available on <http://www.abb.com>



Accessories



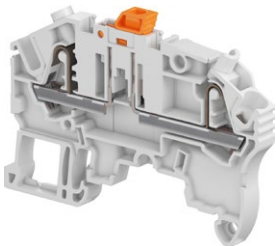
Description	Color	Type	Order code	Pkg qty	Weight (1 pce) g
1 End stops 5.2 mm 0.205 in	Dark grey	BAZ1	1SNK900002R0000	20	5.30
2 End sections 2 mm 0.079 in	Dark grey	EK10	1SNK710910R0000	20	3.26
3 Jumper bars 2 poles 76 A	Orange	JB12-2	1SNK912302R0000	50	4.86
4 Circuit separators 3 mm 0.118 in	Dark grey	CS-R3	1SNK900107R0000	20	6.44
5 Test adapters For test plugs DIA 2 mm 0.079 in For test plugs DIA 4 mm 0.157 in	Dark grey	TP2	1SNK900203R0000	20	1.73
		TP4	1SNK900205R0000	20	2.41
6 Terminal block markers Blank card	White	MC812	1SNK160000R0000	22	10.00
		MC812PA	1SNK169999R0000	20	14.00
	Universal wire markers holder	Grey	UMH	10	0.20

Complete list of accessories is indicated in the terminal block datasheet. Some accessories such as jumper bars may modify the terminal block's ratings: complete information in the accessories catalogue pages.

All the technical data for UL/CSA standard and dimensions in inches are in *italics*.

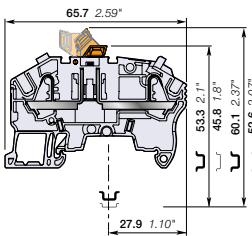
ZK2.5-S PI-Spring terminal blocks

Disconnect with blade - with test sockets - 5.2 mm 0.205 in spacing



1SNK162065/0014

ZK2.5-S



5.2 mm 0.205 in spacing

Description

Combine high performance with compact dimensions: 630 V IEC 300 V UL.

Secure the current measurement:

- for currents below 50 mA, thanks to 2 built in test points DIA 2 mm 0.079 in,
- for currents up to 16 A, by using the TP4 test adapter inserted into the jumper channels.

Ordering details

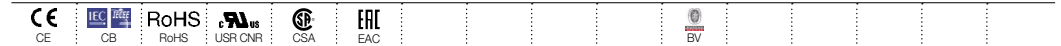
Description	Color	Type	Order code	Pkg qty	Weight (1 pce)
Disconnect with 2 test sockets DIA 2 mm 0.079 in	Grey	ZK2.5-S	1SNK705310R0000	50	8.10
	Blue	ZK2.5-S-BL	1SNK705320R0000	50	8.10
	Orange	ZK2.5-S-OR	1SNK705330R0000	50	8.10

Main technical data

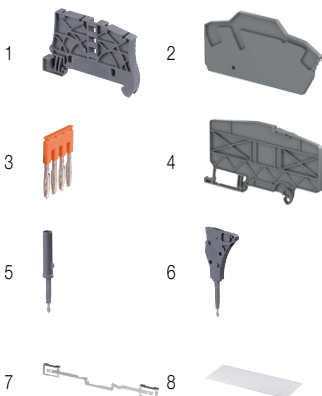
Connecting capacity		IEC	UL - CSA	Mounting instructions	
1 conductor per clamp	Rigid - Solid / Stranded	0.2 ... 4 mm²	26 ... 12 AWG	Rail	TH 35-7.5, TH 35-15
	Flexible	0.22 ... 2.5 mm²	26 ... 14 AWG	Wire stripping length	11 mm 0.433 in
	with non insulated ferrule	0.22 ... 2.5 mm²	26 ... 14 AWG		
	with insulated ferrule	0.22 ... 2.5 mm²	26 ... 14 AWG		
2 conductors per clamp	with twin ferrule	0.22 ... 0.5 mm²	26 ... 20 AWG	Tool (for flexible conductor without ferrule)	Flat screwdriver Ø 3.5 mm Ø 0.138 in
Rated current / Rated cross section		20 A / 2.5 mm²	20 A / 12 AWG		
Rated short-time withstand current (1s)		300 A			
Rated voltage		630 V	300 V		
Impulse withstand voltage		6000 V			
Protection		IP20	NEMA 1		

Recommendation for best usage: in horizontal assemblies, disconnect terminal blocks should be mounted with fixed foot on top (power side) so that the disconnect knife does not partially close through gravity. Furthermore, as specified per IEC 60947-7-1, disconnect terminal blocks are intended to be used for temporary disconnection at zero potential and at no load.

The connecting capacity data for one Rigid - Solid / Stranded - Flexible conductor (when applicable) is a mandatory information required by IEC, UL and CSA standards. All other data are provided as supplementary information only. For more details, please consult our CB, UL or CSA certificates and technical datasheet available on <http://www.abb.com>



Accessories



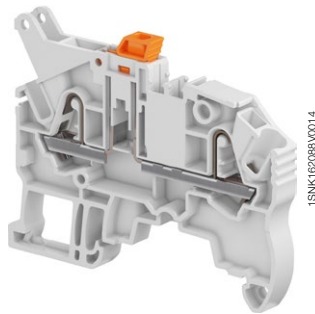
Description	Color	Type	Order code	Pkg qty	Weight (1 pce)	
1 End stops	Dark grey	BAZ1	1SNK900002R0000	20	5.30	
2 End sections	Dark grey	EK2.5-3P	1SNK705911R0000	20	2.42	
3 Jumper bars	Orange	2 poles 32 A	JB5-2	1SNK905302R0000	50	1.30
		3 poles	JB5-3	1SNK905303R0000	50	2.00
		4 poles	JB5-4	1SNK905304R0000	50	2.70
		5 poles	JB5-5	1SNK905305R0000	50	3.50
		10 poles	JB5-10	1SNK905310R0000	30	7.10
50 poles		JB5-50	1SNK905350R0000	10	36.10	
4 Circuit separators	Dark grey	CS-R3	1SNK900107R0000	20	6.44	
5 Test adapters	Dark grey	For test plugs DIA 2 mm 0.079 in	TP2	1SNK900203R0000	20	1.73
		For test plugs DIA 4 mm 0.157 in	TP4	1SNK900205R0000	20	2.41
6 Test connectors	Dark grey	5.2 mm 0.205 in spacing	TC5	1SNK900200R0000	10	5.23
		End module, 5.2 mm 0.205 in	TC5-R1	1SNK900201R0000	10	5.23
7 Shield connectors	White	SHBP	1SNK900601R0000	20	4.12	
		MC512	1SNK140000R0000	22	9.00	
		MC512PA	1SNK149999R0000	20	10.00	
8 Terminal block markers	Grey	Blank card	UMH	1SNK900611R0000	10	0.20
		Universal wire markers holder				

Complete list of accessories is indicated in the terminal block datasheet. Some accessories such as jumper bars may modify the terminal block's ratings: complete information in the accessories catalogue pages.

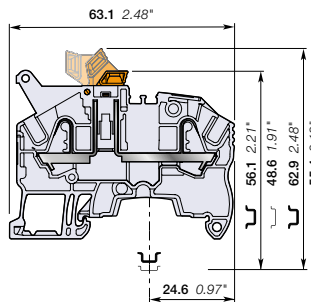
All the technical data for UL/CSA standard and dimensions in inches are in italic.

ZK2.5-S-R1 PI-Spring terminal blocks

Disconnect with blade - 6 mm 0.236 in spacing



ZK2.5-S-R1



6 mm 0.236 in spacing

Description

Simplify the distribution of circuits in marshalling cabinets thanks to our disconnect terminal blocks with the same profile as ZK2.5-SF fuse.

Ordering details

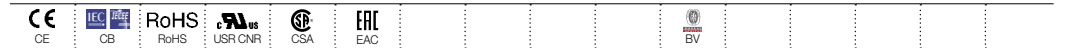
Description	Color	Type	Order code	Pkg qty	Weight (1 pce) g
Disconnect Profile aligned with ZK2.5-SF	Grey <input type="checkbox"/>	ZK2.5-S-R1	1SNK706310R0000	50	8.90

Main technical data

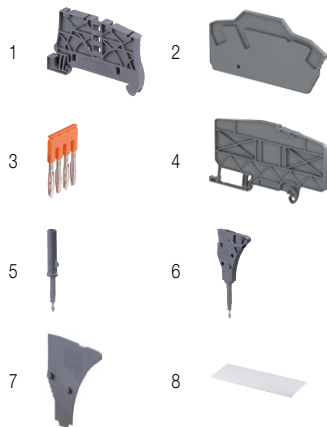
Connecting capacity		IEC	UL - CSA	Mounting instructions	
1 conductor per clamp	Rigid - Solid / Stranded	0.2 ... 4 mm ²	26 ... 12 AWG	Rail	TH 35-7.5, TH 35-15
	Flexible	0.22 ... 2.5 mm ²	26 ... 14 AWG	Wire stripping length	11 mm 0.433 in
	with non insulated ferrule	0.22 ... 2.5 mm ²	26 ... 14 AWG		
	with insulated ferrule	0.22 ... 2.5 mm ²	26 ... 14 AWG		
2 conductors per clamp	with twin ferrule	0.22 ... 0.5 mm ²	26 ... 20 AWG	Tool (for flexible conductor without ferrule)	Flat screwdriver Ø 3.5 mm Ø 0.138 in
Rated current / Rated cross section		20 A / 2.5 mm ²	20 A / 12 AWG		
Rated short-time withstand current (1s)		300 A			
Rated voltage		630 V	300 V		
Impulse withstand voltage		6000 V			
Protection		IP20	NEMA 1		

Recommendation for best usage: in horizontal assemblies, disconnect terminal blocks should be mounted with fixed foot on top (power side) so that the disconnect knife does not partially close through gravity. Furthermore, as specified per IEC 60947-7-1, disconnect terminal blocks are intended to be used for temporary disconnection at zero potential and at no load.

The connecting capacity data for one Rigid - Solid / Stranded - Flexible conductor (when applicable) is a mandatory information required by IEC, UL and CSA standards. All other data are provided as supplementary information only. For more details, please consult our CB, UL or CSA certificates and technical datasheet available on <http://www.abb.com>

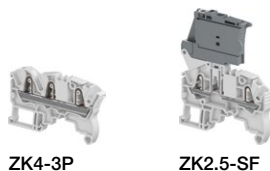


Accessories



Description	Color	Type	Order code	Pkg qty	Weight (1 pce) g	
1 End stops	Dark grey <input type="checkbox"/>	BAZ1	1SNK90002R0000	20	5.30	
2 End sections	Dark grey <input type="checkbox"/>	EK2.5-3P	1SNK705911R0000	20	2.42	
3 Jumper bars	Orange <input type="checkbox"/>	2 poles	JB6-2	1SNK906302R0000	50	1.30
		3 poles	JB6-3	1SNK906303R0000	50	2.10
		4 poles	JB6-4	1SNK906304R0000	50	2.90
		5 poles	JB6-5	1SNK906305R0000	50	3.60
		10 poles	JB6-10	1SNK906310R0000	20	7.40
		50 poles	JB6-50	1SNK906350R0000	10	38.10
4 Circuit separators	Dark grey <input type="checkbox"/>	CS-R3	1SNK900107R0000	20	6.44	
5 Test adapters	Dark grey <input type="checkbox"/>	For test plugs DIA 2 mm 0.079 in	TP2	1SNK900203R0000	20	1.73
		For test plugs DIA 4 mm 0.157 in	TP4	1SNK900205R0000	20	2.41
6 Test connectors	Dark grey <input type="checkbox"/>	TC5-R1	1SNK900201R0000	10	5.23	
7 Spacers	Dark grey <input type="checkbox"/>	ES-TC6	1SNK900105R0000	10	0.80	
	White <input type="checkbox"/>	MC612	1SNK150000R0000	22	10.00	
8 Terminal block markers	White <input type="checkbox"/>	MC612PA	1SNK159999R0000	20	11.00	
	Grey <input type="checkbox"/>	UMH	1SNK900611R0000	10	0.20	

Complete list of accessories is indicated in the terminal block datasheet. Some accessories such as jumper bars may modify the terminal block's ratings: complete information in the accessories catalogue pages.



ZK4-3P

ZK2.5-SF

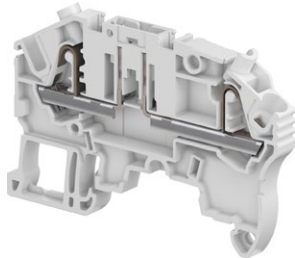
PI-Spring terminal blocks

Description	Color	Type	Order code	Pkg qty	Weight (1 pce) g
Feed-through	Grey <input type="checkbox"/>	ZK4-3P	1SNK706011R0000	50	11.00
Fuse	Grey, dark grey <input type="checkbox"/>	ZK2.5-SF	1SNK706410R0000	50	16.20

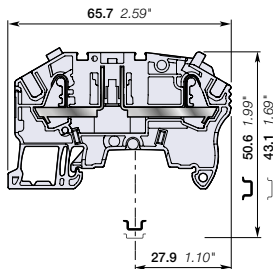
All the technical data for UL/CSA standard and dimensions in inches are in *italics*.

ZK2.5-SP PI-Spring terminal blocks

Disconnect with plug - with test sockets - 5.2 mm 0.205 in spacing



ZK2.5-SP



5.2 mm 0.205 in spacing

Description

The flexible solution for fitting the component of your choice in series with our quick-fitting PG5 component holder plug:
 – compatible with components of 8.8 x 3.2 mm 0.346 x 0.125 in, such as resistors, diodes or mini axial fuses.

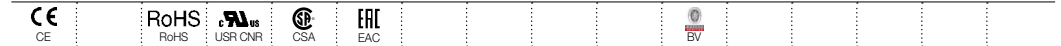
Ordering details

Description	Color	Type	Order code	Pkg qty	Weight (1 pce)
Disconnect with 2 test sockets DIA 2 mm 0.079 in	Grey	ZK2.5-SP	1SNK705311R0000	50	11.50 g

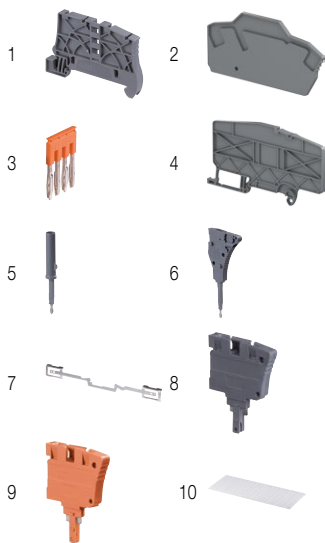
Main technical data

Connecting capacity	IEC	UL - CSA	Mounting instructions
1 conductor per clamp Rigid - Solid / Stranded Flexible with non insulated ferrule with insulated ferrule	0.2 ... 4 mm ² 0.22 ... 2.5 mm ² 0.22 ... 2.5 mm ² 0.22 ... 2.5 mm ²	26 ... 12 AWG 26 ... 14 AWG 26 ... 14 AWG	Rail Wire stripping length Tool (for flexible conductor without ferrule)
2 conductors per clamp with twin ferrule	0.22 ... 0.5 mm ²	26 ... 20 AWG	TH 35-7.5, TH 35-15 11 mm 0.433 in Flat screwdriver Ø 3.5 mm Ø 0.138 in
Rated current / Rated cross section	16 A / 2.5 mm ²	18 A / 12 AWG	
Rated short-time withstand current (1s)	300 A		
Rated voltage	630 V	300 V	
Impulse withstand voltage	6000 V		
Protection	IP20	NEMA 1	

The connecting capacity data for one Rigid - Solid / Stranded - Flexible conductor (when applicable) is a mandatory information required by IEC, UL and CSA standards. All other data are provided as supplementary information only. For more details, please consult our CB, UL or CSA certificates and technical datasheet available on <http://www.abb.com>



Accessories



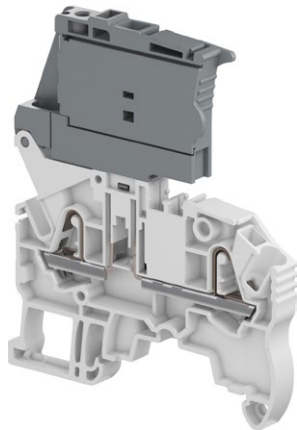
Description	Color	Type	Order code	Pkg qty	Weight (1 pce)
1 End stops 5.2 mm 0.205 in	Dark grey	BAZ1	1SNK900002R0000	20	5.30
2 End sections 2 mm 0.079 in	Dark grey	EK2.5-3P	1SNK705911R0000	20	2.42
3 Jumper bars 2 poles 32 A	Orange	JB5-2	1SNK905302R0000	50	1.30
3 poles		JB5-3	1SNK905303R0000	50	2.00
4 poles		JB5-4	1SNK905304R0000	50	2.70
5 poles		JB5-5	1SNK905305R0000	50	3.50
10 poles		JB5-10	1SNK905310R0000	30	7.10
50 poles		JB5-50	1SNK905350R0000	10	36.10
4 Circuit separators 3 mm 0.118 in	Dark grey	CS-R3	1SNK900107R0000	20	6.44
5 Test adapters For test plugs DIA 2 mm 0.079 in	Dark grey	TP2	1SNK900203R0000	20	1.73
For test plugs DIA 4 mm 0.157 in		TP4	1SNK900205R0000	20	2.41
6 Test connectors 5.2 mm 0.205 in spacing	Dark grey	TC5	1SNK900200R0000	10	5.23
End module, 5.2 mm 0.205 in		TC5-R1	1SNK900201R0000	10	5.23
7 Shield connectors		SHBP	1SNK900601R0000	20	4.12
8 Component plugs Components in series with circuit	Dark grey	PG5	1SNK900401R0000	20	3.45
9 Disconnect plugs Equipped with linking bar	Orange	PG5-R1	1SNK900402R0000	20	3.45
10 Terminal block markers Blank card	White	MC512	1SNK140000R0000	22	9.00
Universal wire markers holder	Grey	UMH	1SNK900611R0000	10	0.20

Complete list of accessories is indicated in the terminal block datasheet. Some accessories such as jumper bars may modify the terminal block's ratings: complete information in the accessories catalogue pages.

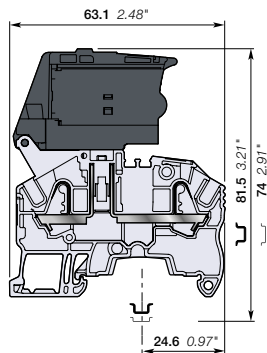
All the technical data for UL/CSA standard and dimensions in inches are in *italics*.

ZK2.5-SF PI-Spring terminal blocks

For 5x20 fuses - 6 mm 0.236 in spacing



ZK2.5-SF



6 mm 0.236 in spacing

Description

- Protect your circuits with 5x20 fuse terminal blocks compliant with IEC 60947-7-3 standard (fuse not supplied with the terminal blocks),
- Simplify the distribution thanks to the 2 jumper channels aligned with ZK4-3P feed-through and ZK2.5-S-R1 disconnect terminal blocks.

Ordering details

Description	Color	Type	Order code	Pkg qty	Weight (1 pce)
Fuse	Grey, dark grey	ZK2.5-SF	1SNK706410R0000	50	16.20

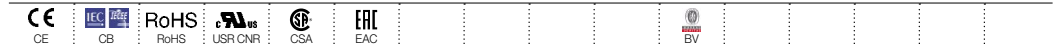
Main technical data

Connecting capacity		IEC	UL - CSA	Mounting instructions	
1 conductor per clamp	Rigid - Solid / Stranded	0.2 ... 4 mm ²	26 ... 12 AWG	Wire stripping length	 TH 35-7.5, TH 35-15 11 mm 0.433 in
	Flexible with non insulated ferrule	0.22 ... 2.5 mm ²	26 ... 14 AWG		
	with insulated ferrule	0.22 ... 2.5 mm ²	26 ... 14 AWG		
2 conductors per clamp	Flexible with twin ferrule	0.22 ... 0.5 mm ²	26 ... 20 AWG	Tool (for flexible conductor without ferrule)	 Flat screwdriver Ø 3.5 mm Ø 0.138 in
Rated current / Rated cross section		6.3 A / 2.5 mm ²	16 A / 12 AWG		
Rated voltage		500 V	300 V		
Impulse withstand voltage		6000 V			
Protection		IP20	NEMA 1		

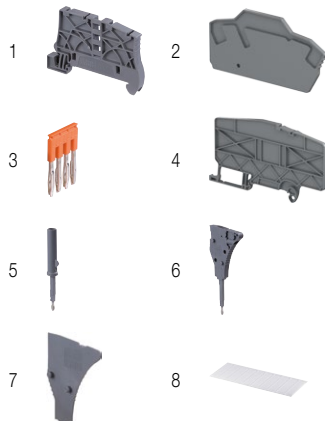
The fuse holder must be first disconnected prior any fuse replacement. Mount your fuse safely without touching any active part: put the fuse into the hooks of the fuse holder shutter; at the closing of the shutter, the fuse is perfectly in place in the fuse holder.

Separate arrangement		Assembly composed of 1 fuse terminal block in between non fuse terminal blocks	Overload and short-circuit protection	2.5 W
			Exclusive short-circuit protection	4 W
Compound arrangement		Assembly composed of 5 fuse terminal blocks	Overload and short-circuit protection	1.6 W
			Exclusive short-circuit protection	4 W

The connecting capacity data for one Rigid - Solid / Stranded - Flexible conductor (when applicable) is a mandatory information required by IEC, UL and CSA standards. All other data are provided as supplementary information only. For more details, please consult our CB, UL or CSA certificates and technical datasheet available on <http://www.abb.com>



Accessories



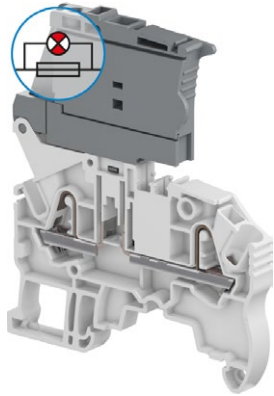
Description	Color	Type	Order code	Pkg qty	Weight (1 pce)	
1 End stops	Dark grey	BAZ1	1SNK900002R0000	20	5.30	
2 End sections	Dark grey	EK2.5-3P	1SNK705911R0000	20	2.42	
3 Jumper bars	Orange	2 poles	JB6-2	1SNK906302R0000	50	1.30
		3 poles	JB6-3	1SNK906303R0000	50	2.10
		4 poles	JB6-4	1SNK906304R0000	50	2.90
		5 poles	JB6-5	1SNK906305R0000	50	3.60
		10 poles	JB6-10	1SNK906310R0000	20	7.40
		50 poles	JB6-50	1SNK906350R0000	10	38.10
4 Circuit separators	Dark grey	CS-R3	1SNK900107R0000	20	6.44	
5 Test adapters	Dark grey	For test plugs DIA 2 mm 0.079 in	TP2	1SNK900203R0000	20	1.73
		For test plugs DIA 4 mm 0.157 in	TP4	1SNK900205R0000	20	2.41
6 Test connectors	Dark grey	TC5-R1	1SNK900201R0000	10	5.23	
7 Spacers	Dark grey	ES-TC6	1SNK900105R0000	10	0.80	
8 Terminal block markers	White	MC612	1SNK150000R0000	22	10.00	
		MC612PA	1SNK159999R0000	20	11.00	
	Grey	UMH	1SNK900611R0000	10	0.20	

Complete list of accessories is indicated in the terminal block datasheet. Some accessories such as jumper bars may modify the terminal block's ratings: complete information in the accessories catalogue pages.

All the technical data for UL/CSA standard and dimensions in inches are in italic.

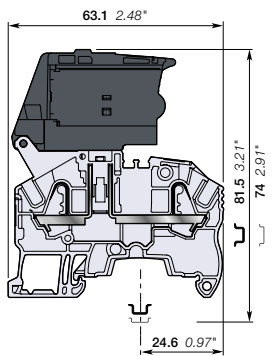
ZK2.5-SF-R PI-Spring terminal blocks

For 5x20 fuses - with blown fuse indicator - 6 mm 0.236 in spacing



1SNK162031V0014

ZK2.5-SF-R



6 mm 0.236 in spacing

Description

- Protect your circuits with 5x20 fuse terminal blocks compliant with IEC 60947-7-3 standard (fuse not supplied with the terminal blocks),
- Simplify the distribution thanks to the 2 jumper channels aligned with ZK4-3P feed-through and ZK2.5-S-R1 disconnect terminal blocks,
- Quickly identify the defective circuit thanks to the blown fuse indicator (with leakage current < 0.5 mA).

Ordering details

Description	Color	Type	Order code	Pkg qty	Weight (1 pce) g
Fuse with blown fuse indicator 24 ... 110 V AC / DC	Grey, dark grey	ZK2.5-SF-R1	1SNK706411R0000	50	16.30
Fuse with blown fuse indicator 115 ... 250 V AC / DC	Grey, dark grey	ZK2.5-SF-R3	1SNK706412R0000	50	16.30

Main technical data

Connecting capacity		IEC	UL - CSA
1 conductor per clamp	Rigid - Solid / Stranded	0.2 ... 4 mm ²	26 ... 12 AWG
	Flexible	0.22 ... 2.5 mm ²	26 ... 12 AWG
	with non insulated ferrule	0.22 ... 2.5 mm ²	26 ... 14 AWG
	with insulated ferrule	0.22 ... 2.5 mm ²	26 ... 14 AWG
2 conductors per clamp	Flexible with twin ferrule	0.22 ... 0.5 mm ²	26 ... 20 AWG
Rated current / Rated cross section		6.3 A / 2.5 mm ²	16 A / 12 AWG
Rated voltage		500 V	300 V
Impulse withstand voltage		6000 V	
Protection		IP20	NEMA 1

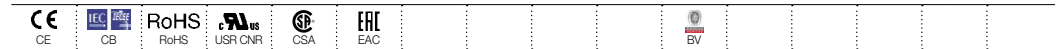
Mounting instructions

Rail	Wire stripping length	Tool (for flexible conductor without ferrule)
TH 35-7.5, TH 35-15	11 mm 0.433 in	Flat screwdriver Ø 3.5 mm Ø 0.138 in

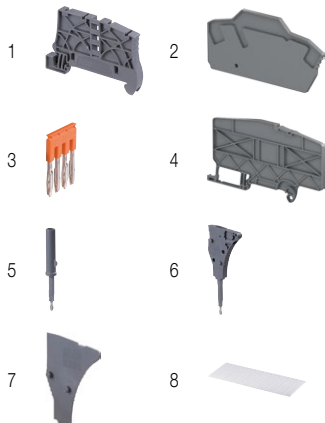
The fuse holder must be first disconnected prior any fuse replacement. Mount your fuse safely without touching any active part: put the fuse into the hooks of the fuse holder shutter; at the closing of the shutter, the fuse is perfectly in place in the fuse holder.

Separate arrangement	Compound arrangement	Protection	Power
		Overload and short-circuit protection	2.5 W
		Exclusive short-circuit protection	4 W
		Overload and short-circuit protection	1.6 W
		Exclusive short-circuit protection	4 W

The connecting capacity data for one Rigid - Solid / Stranded - Flexible conductor (when applicable) is a mandatory information required by IEC, UL and CSA standards. All other data are provided as supplementary information only. For more details, please consult our CB, UL or CSA certificates and technical datasheet available on <http://www.abb.com>



Accessories



Description	Color	Type	Order code	Pkg qty	Weight (1 pce) g
1 End stops 5.2 mm 0.205 in	Dark grey	BAZ1	1SNK900002R0000	20	5.30
2 End sections 2 mm 0.079 in	Dark grey	EK2.5-3P	1SNK705911R0000	20	2.42
3 Jumper bars 2 poles 41 A	Orange	JB6-2	1SNK906302R0000	50	1.30
		JB6-3	1SNK906303R0000	50	2.10
		JB6-4	1SNK906304R0000	50	2.90
		JB6-5	1SNK906305R0000	50	3.60
		JB6-10	1SNK906310R0000	20	7.40
		JB6-50	1SNK906350R0000	10	38.10
4 Circuit separators 3 mm 0.118 in	Dark grey	CS-R3	1SNK900107R0000	20	6.44
5 Test adapters For test plugs DIA 2 mm 0.079 in For test plugs DIA 4 mm 0.157 in	Dark grey	TP2	1SNK900203R0000	20	1.73
		TP4	1SNK900205R0000	20	2.41
6 Test connectors End module, 5.2 mm 0.205 in	Dark grey	TC5-R1	1SNK900201R0000	10	5.23
7 Spacers 0.8 mm 0.031 in	Dark grey	ES-TC6	1SNK150000R0000	10	0.80
8 Terminal block markers Blank card	White	MC612	1SNK159999R0000	22	10.00
		MC612PA	1SNK159999R0000	20	11.00
Universal wire markers holder	Grey	UMH	1SNK900611R0000	10	0.20

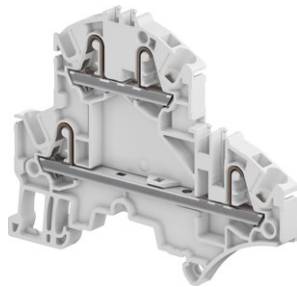
Complete list of accessories is indicated in the terminal block datasheet.

Some accessories such as jumper bars may modify the terminal block's ratings: complete information in the accessories catalogue pages.

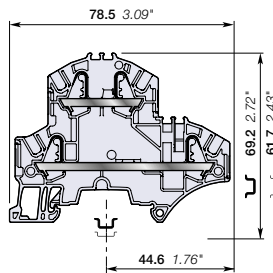
All the technical data for UL/CSA standard and dimensions in inches are in *italics*.

ZK2.5-D2 PI-Spring terminal blocks

Double deck with 2 feed-through circuits - 5.2 mm 0.205 in spacing



ZK2.5-D2



5.2 mm 0.205 in spacing

Description

Combine high performance with compact dimensions:

- 800 V IEC 600 V UL,
- 2 jumper channels and a large input and output marker zone on each deck.

Ordering details

Description	Color	Type	Order code	Pkg qty	Weight (1 pce) g
Double deck 2 feed-through circuits	Grey	ZK2.5-D2	1SNK705210R0000	50	11.20
	Blue	ZK2.5-D2-BL	1SNK705220R0000	50	11.20

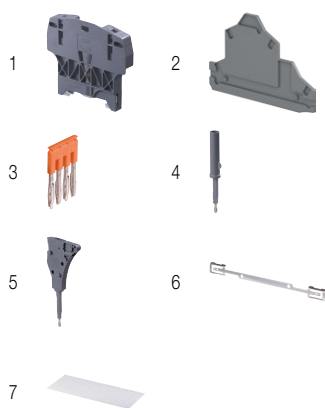
Main technical data

Connecting capacity		IEC	UL - CSA	Rail	TH 35-7.5, TH 35-15
1 conductor per clamp	Rigid - Solid / Stranded	0.2 ... 4 mm ²	26 ... 12 AWG	Wire stripping length	11 mm 0.433 in
	Flexible	0.22 ... 2.5 mm ²	26 ... 14 AWG		
	with non insulated ferrule	0.22 ... 2.5 mm ²	26 ... 14 AWG		
2 conductors per clamp	with insulated ferrule	0.22 ... 2.5 mm ²	26 ... 14 AWG	Tool (for flexible conductor without ferrule)	Flat screwdriver
	Flexible with twin ferrule	0.22 ... 0.5 mm ²	26 ... 20 AWG		Ø 3.5 mm 0.138 in
Rated current / Rated cross section		24 A / 2.5 mm ²	20 A / 12 AWG		
Rated short-time withstand current (1s)		300 A			
Short Circuit Current Rating (with specific conditions)			100 kA		
Rated voltage		800 V	600 V		
Impulse withstand voltage		8000 V			
Protection		IP20	NEMA 1		
Increased safety Ex e		693 V 21 A IEC/EN 60079-7 - IM2 II 2 GD Ex eb I/II/III/C			

The connecting capacity data for one Rigid - Solid / Stranded - Flexible conductor (when applicable) is a mandatory information required by IEC, UL and CSA standards. All other data are provided as supplementary information only. For more details, please consult our CB, UL or CSA certificates and technical datasheet available on <http://www.abb.com>

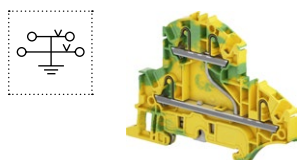


Accessories



Description	Color	Type	Order code	Pkg qty	Weight (1 pce) g	
1 End stops 10 mm 0.394 in	Dark grey	BAZH1	1SNK900102R0000	20	23.90	
2 End sections 2 mm 0.079 in	Dark grey	EK2.5-D2	1SNK705960R0000	20	3.43	
3 Jumper bars 2 poles 32 A	Orange	JB5-2	1SNK905302R0000	50	1.30	
		3 poles JB5-3	1SNK905303R0000	50	2.00	
		4 poles JB5-4	1SNK905304R0000	50	2.70	
		5 poles JB5-5	1SNK905305R0000	50	3.50	
		10 poles JB5-10	1SNK905310R0000	30	7.10	
		50 poles JB5-50	1SNK905350R0000	10	36.10	
4 Test adapters For test plugs DIA 2 mm 0.079 in For test plugs DIA 4 mm 0.157 in	Dark grey	TP2	1SNK900203R0000	20	1.73	
		TP4	1SNK900205R0000	20	2.41	
5 Test connectors 5.2 mm 0.205 in spacing End module, 5.2 mm 0.205 in	Dark grey	TC5	1SNK900200R0000	10	5.23	
		TC5-R1	1SNK900201R0000	10	5.23	
6 Shield connectors		SHB	1SNK900602R0000	20	4.90	
7 Terminal block markers Blank card	White	MC512	1SNK140000R0000	22	9.00	
	Grey	MC512PA	1SNK149999R0000	20	10.00	
		Universal wire markers holder	UMH	1SNK900611R0000	10	0.20

Complete list of accessories is indicated in the terminal block datasheet. Some accessories such as jumper bars may modify the terminal block's ratings: complete information in the accessories catalogue pages.



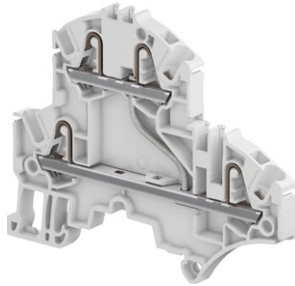
Double deck PI-Spring terminal blocks

Description	Color	Type	Order code	Pkg qty	Weight (1 pce) g
Double deck Profile aligned with ZK2.5-D2 and ZK2.5-D1	Green-yellow	ZK2.5-D1-PE	1SNK705250R0000	50	15.70

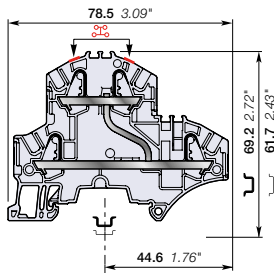
All the technical data for UL/CSA standard and dimensions in inches are in *italics*.

ZK2.5-D1 PI-Spring terminal blocks

Double deck with 1 feed-through circuit - 5.2 mm 0.205 in spacing



ZK2.5-D1



5.2 mm 0.205 in spacing

Description

Find the same functionalities as ZK2.5-D2 and ease one potential distribution on 4 independent connections.

Ordering details

Description	Color	Type	Order code	Pkg qty	Weight (1 pce) g
Double deck 1 feed-through circuit	Grey	ZK2.5-D1	1SNK705211R0000	50	11.20

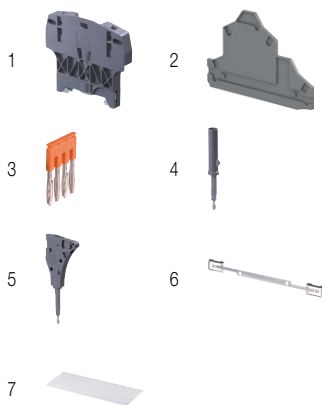
Main technical data

Connecting capacity		IEC	UL - CSA	Mounting instructions	
1 conductor per clamp	Rigid - Solid / Stranded	0.2 ... 4 mm ²	26 ... 12 AWG	Rail	TH 35-7.5, TH 35-15
	Flexible	0.22 ... 2.5 mm ²	26 ... 14 AWG	Wire stripping length	11 mm 0.433 in
	with non insulated ferrule	0.22 ... 2.5 mm ²	26 ... 14 AWG		
2 conductors per clamp	with insulated ferrule	0.22 ... 2.5 mm ²	26 ... 14 AWG	Tool (for flexible conductor without ferrule)	Flat screwdriver Ø 3.5 mm 0.138 in
	Flexible with twin ferrule	0.22 ... 0.5 mm ²	26 ... 20 AWG		
Rated current / Rated cross section		24 A / 2.5 mm ²	20 A / 12 AWG		
Rated short-time withstand current (1s)		300 A			
Short Circuit Current Rating (with specific conditions)					
Rated voltage		800 V	600 V		
Impulse withstand voltage		8000 V			
Protection		IP20	NEMA 1		
Increased safety Ex e		693 V 21 A IEC/EN 60079-7 - IM2 II 2 GD Ex eb I/IC/IIIC			

The connecting capacity data for one Rigid - Solid / Stranded - Flexible conductor (when applicable) is a mandatory information required by IEC, UL and CSA standards. All other data are provided as supplementary information only. For more details, please consult our CB, UL or CSA certificates and technical datasheet available on <http://www.abb.com>

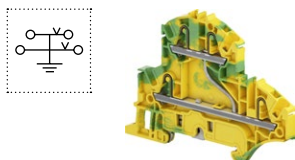


Accessories



Description	Color	Type	Order code	Pkg qty	Weight (1 pce) g
1 End stops 10 mm 0.394 in	Dark grey	BAZH1	1SNK900102R0000	20	23.90
2 End sections 2 mm 0.079 in	Dark grey	EK2.5-D2	1SNK705960R0000	20	3.43
3 Jumper bars 2 poles 32 A	Orange	JB5-2	1SNK905302R0000	50	1.30
		JB5-3	1SNK905303R0000	50	2.00
		JB5-4	1SNK905304R0000	50	2.70
		JB5-5	1SNK905305R0000	50	3.50
		JB5-10	1SNK905310R0000	30	7.10
4 Test adapters For test plugs DIA 2 mm 0.079 in For test plugs DIA 4 mm 0.157 in	Dark grey	JB5-50	1SNK905350R0000	10	36.10
		TP2	1SNK900203R0000	20	1.73
		TP4	1SNK900205R0000	20	2.41
5 Test connectors 5.2 mm 0.205 in spacing End module, 5.2 mm 0.205 in	Dark grey	TC5-R1	1SNK900200R0000	10	5.23
		SHB	1SNK900602R0000	20	4.90
6 Shield connectors					
7 Terminal block markers	White	MC512	1SNK140000R0000	22	9.00
	Grey	MC512PA	1SNK149999R0000	20	10.00
Universal wire markers holder	Grey	UMH	1SNK900611R0000	10	0.20

Complete list of accessories is indicated in the terminal block datasheet. Some accessories such as jumper bars may modify the terminal block's ratings: complete information in the accessories catalogue pages.



Double deck PI-Spring terminal blocks

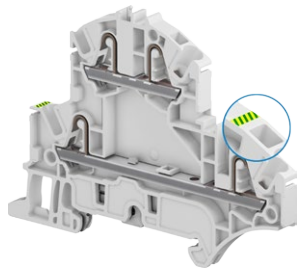
Description	Color	Type	Order code	Pkg qty	Weight (1 pce) g
Double deck Profile aligned with ZK2.5-D2 and ZK2.5-D1	Green-yellow	ZK2.5-D1-PE	1SNK705250R0000	50	15.70

All the technical data for UL/CSA standard and dimensions in inches are in italic.

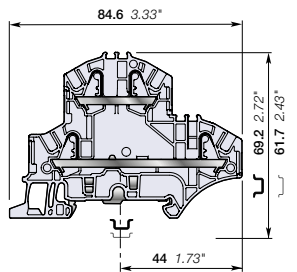
ZK2.5-D2-PE PI-Spring terminal blocks

Double deck with 1 feed-through circuit and 1 ground circuit

5.2 mm 0.205 in spacing



ZK2.5-D2-PE



5.2 mm 0.205 in spacing

Description

Combine high performance with compact dimensions:

- 800 V IEC 600 V UL,
- 1 feed through circuit and 1 ground circuit in just 5.2 mm 0.205 in spacing,
- 2 jumper channels and a large input and output marker zone on each deck,
- Designed for easy wiring.

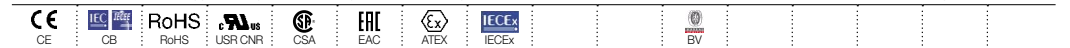
Ordering details

Description	Color	Type	Order code	Pkg qty	Weight (1 pce) g
Double deck 1 feed-through circuit and 1 ground circuit	Grey, green-yellow	ZK2.5-D2-PE	1SNK705212R0000	20	15.70

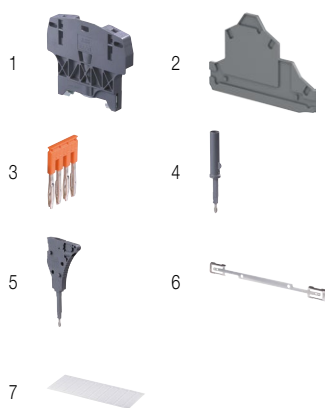
Main technical data

Connecting capacity		IEC	UL - CSA	Mounting instructions	
1 conductor per clamp	Rigid - Solid / Stranded	0.2 ... 4 mm ²	26 ... 12 AWG	Rail	TH 35-7.5, TH 35-15
	Flexible	0.22 ... 2.5 mm ²	26 ... 14 AWG	Wire stripping length	11 mm 0.433 in
	with non insulated ferrule	0.22 ... 2.5 mm ²	26 ... 14 AWG		
2 conductors per clamp	with insulated ferrule	0.22 ... 2.5 mm ²	26 ... 14 AWG	Tool (for flexible conductor without ferrule)	Flat screwdriver Ø 3.5 mm Ø 0.138 in
	Flexible with twin ferrule	0.22 ... 0.5 mm ²	26 ... 20 AWG		
Rated current / Rated cross section		24 A / 2.5 mm ²	20 A / 12 AWG		
Rated short-time withstand current (1s)		300 A			
Short Circuit Current Rating (with specific conditions)					
Rated voltage		800 V	600 V		
Impulse withstand voltage		8000 V			
Protection		IP20	NEMA 1		
Increased safety Ex e		693 V 21 A IEC/EN 60079-7 - IM2 II 2 GD Ex eb I/II/III			

The connecting capacity data for one Rigid - Solid / Stranded - Flexible conductor (when applicable) is a mandatory information required by IEC, UL and CSA standards. All other data are provided as supplementary information only. For more details, please consult our CB, UL or CSA certificates and technical datasheet available on <http://www.abb.com>



Accessories



Description	Color	Type	Order code	Pkg qty	Weight (1 pce) g	
1 End stops 10 mm 0.394 in	Dark grey	BAZH1	1SNK900102R0000	20	23.90	
2 End sections 2 mm 0.079 in	Dark grey	EK2.5-D2	1SNK705960R0000	20	3.43	
3 Jumper bars 2 poles 32 A	Orange	JB5-2	1SNK905302R0000	50	1.30	
		JB5-3	1SNK905303R0000	50	2.00	
		JB5-4	1SNK905304R0000	50	2.70	
		JB5-5	1SNK905305R0000	50	3.50	
		JB5-10	1SNK905310R0000	30	7.10	
4 Test adapters For test plugs DIA 2 mm 0.079 in For test plugs DIA 4 mm 0.157 in	Dark grey	JB5-50	1SNK905350R0000	10	36.10	
		TP2	1SNK900203R0000	20	1.73	
		TP4	1SNK900205R0000	20	2.41	
5 Test connectors 5.2 mm 0.205 in spacing End module, 5.2 mm 0.205 in	Dark grey	TC5	1SNK900200R0000	10	5.23	
		TC5-R1	1SNK900201R0000	10	5.23	
6 Shield connectors		SHB	1SNK900602R0000	20	4.90	
7 Terminal block markers Blank card	White	MC512	1SNK140000R0000	22	9.00	
	Grey	MC512PA	1SNK149999R0000	20	10.00	
		Universal wire markers holder	UMH	1SNK900611R0000	10	0.20

Complete list of accessories is indicated in the terminal block datasheet. Some accessories such as jumper bars may modify the terminal block's ratings: complete information in the accessories catalogue pages.

Double deck PI-Spring terminal blocks

Description	Color	Type	Order code	Pkg qty	Weight (1 pce) g
Double deck	Grey	ZK2.5-D2	1SNK705210R0000	50	11.20

All the technical data for UL/CSA standard and dimensions in inches are in *italics*.

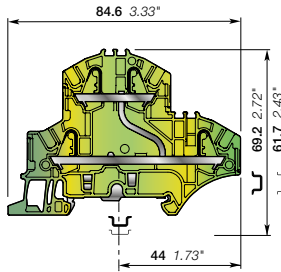
ZK2.5-D1-PE PI-Spring terminal blocks

Double deck with 1 ground circuit - 5.2 mm 0.205 in spacing



1SNK162049502014

ZK2.5-D1-PE



5.2 mm 0.205 in spacing

Description

Improve the safety of your installation in the event of a short-circuit thanks to our screwless rail contact:

- rail contact non operator dependent,
- Performances above the requirements of the IEC 60947-7-2 terminal block standard,
- Secured snap on or off the rail,
- profile aligned with ZK2.5-D2.

Ordering details

Description	Color	Type	Order code	Pkg qty	Weight (1 pce) g
Double deck 1 ground circuit	Green-yellow	ZK2.5-D1-PE	1SNK705250R0000	20	15.70

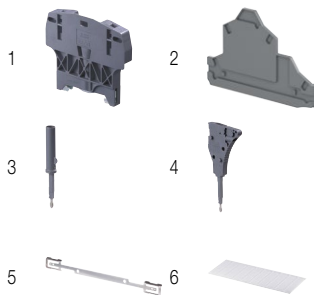
Main technical data

Connecting capacity		IEC	UL - CSA	Mounting instructions	
1 conductor per clamp	Rigid - Solid / Stranded	0.2 ... 4 mm ²	26 ... 12 AWG	Rail	TH 35-7.5, TH 35-15
	Flexible	0.22 ... 2.5 mm ²		Wire stripping length	11 mm 0.433 in
	with non insulated ferrule	0.22 ... 2.5 mm ²	26 ... 14 AWG	Tool (for flexible conductor without ferrule)	Flat screwdriver Ø 3.5 mm Ø 0.138 in
	with insulated ferrule	0.22 ... 2.5 mm ²	26 ... 14 AWG		
Rated cross section		2.5 mm ²	12 AWG		
Rated short-time withstand current (1s)		300 A	396 A		
Protection		IP20	NEMA 1		
Explosive atmosphere classification		IM2 II 2 GD Ex eb I/IC/IIIC			

The connecting capacity data for one Rigid - Solid / Stranded - Flexible conductor (when applicable) is a mandatory information required by IEC, UL and CSA standards. All other data are provided as supplementary information only. For more details, please consult our CB, UL or CSA certificates and technical datasheet available on <http://www.abb.com>



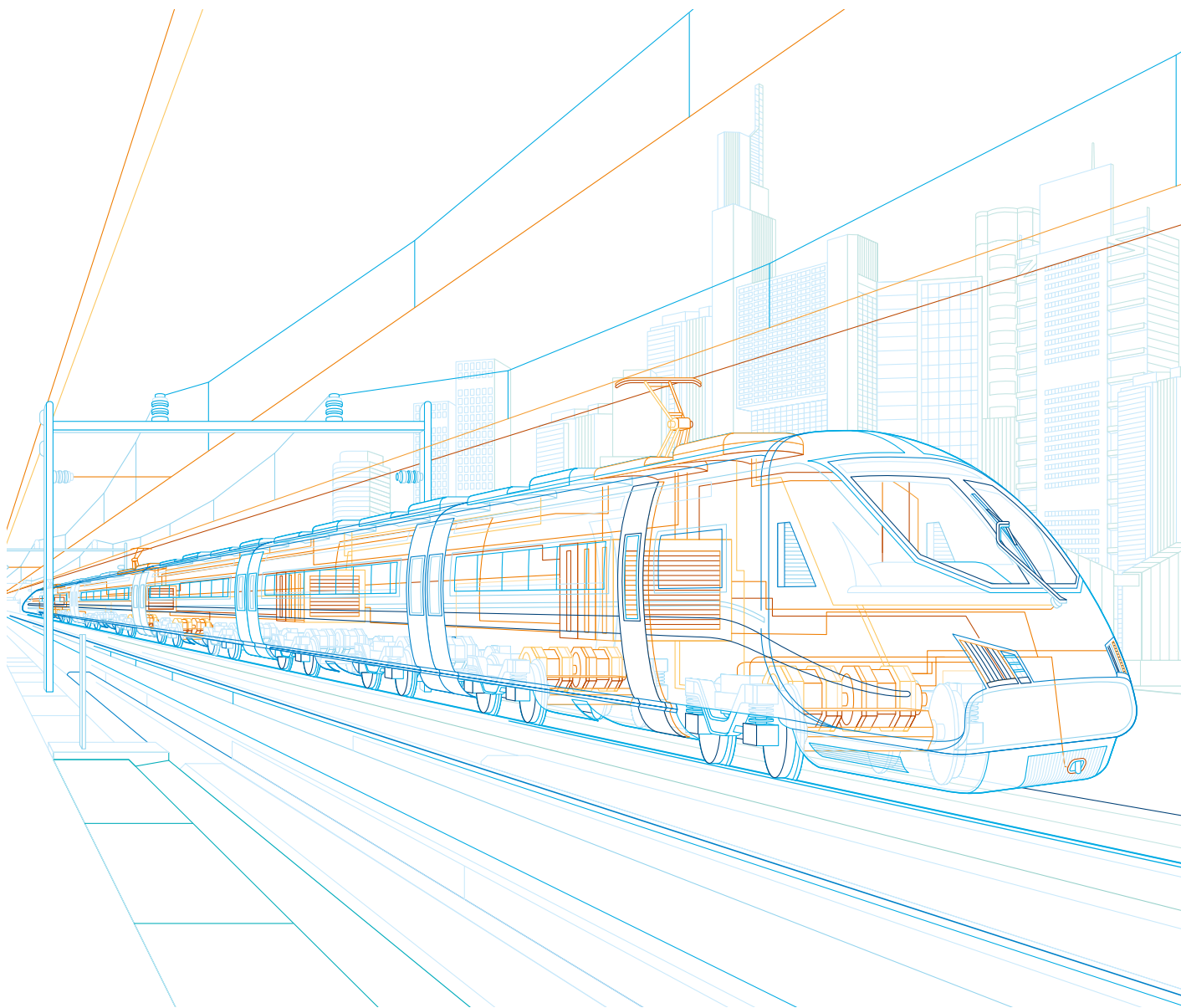
Accessories



Description	Color	Type	Order code	Pkg qty	Weight (1 pce) g
1 End stops 10 mm 0.394 in	Dark grey	BAZH1	1SNK900102R0000	20	23.90
2 End sections 2 mm 0.079 in	Dark grey	EK2.5-D2	1SNK705960R0000	20	3.43
3 Test adapters For test plugs DIA 2 mm 0.079 in	Dark grey	TP2	1SNK900203R0000	20	1.73
		TP4	1SNK900205R0000	20	2.41
4 Test connectors For test plugs DIA 4 mm 0.157 in 5.2 mm 0.205 in spacing End module, 5.2 mm 0.205 in	Dark grey	TC5	1SNK900200R0000	10	5.23
		TC5-R1	1SNK900201R0000	10	5.23
5 Shield connectors		SHB	1SNK900602R0000	20	4.90
6 Terminal block markers Blank card Universal wire markers holder	White	MC512	1SNK140000R0000	22	9.00
		MC512PA	1SNK149999R0000	20	10.00
	Grey	UMH	1SNK900611R0000	10	0.20

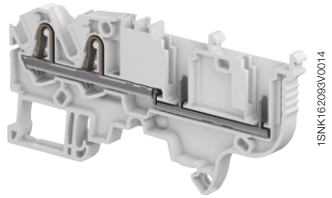
Complete list of accessories is indicated in the terminal block datasheet. Some accessories such as jumper bars may modify the terminal block's ratings: complete information in the accessories catalogue pages.

All the technical data for UL/CSA standard and dimensions in inches are in italic.

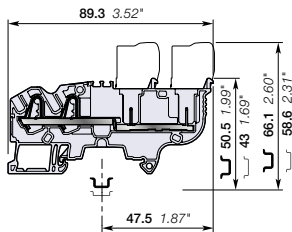


ZDK2.5-22 pluggable terminal blocks

PI-Spring - Feed-through - 5.2 mm 0.205 in spacing



ZDK2.5-22



5.2 mm 0.205 in spacing

Description

- Increase your productivity with pluggable terminal blocks: possibility of pre-produced plugs harnesses, time saving plug and play assembly, reduced transportation panels preparation and final installation, easily connect sub-assemblies together,
- Simplify and secure your installation: in site faulty connection errors are eliminated, prior connection testing is eased and reliable, test connectors (TC5) withstanding 10 000 operations are compatible for convenient testing.

Ordering details

Description	Color	Type	Order code	Pkg qty	Weight (1 pce)
Feed-through 4 connections	Grey <input type="checkbox"/>	ZDK2.5-22	1SNK805010R0000	50	9.6

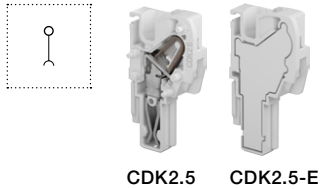
Main technical data

Connecting capacity	IEC	UL - CSA
1 conductor per clamp	Rigid - Solid / Stranded	0.2 ... 4 mm ² 26 ... 12 AWG
	Flexible	0.22 ... 2.5 mm ²
	with non insulated ferrule	0.22 ... 2.5 mm ² 26 ... 14 AWG
	with insulated ferrule	0.22 ... 2.5 mm ² 26 ... 14 AWG
2 conductors per clamp	Flexible with twin ferrule	0.22 ... 0.5 mm ² 26 ... 20 AWG
Rated current / Rated cross section	24 A / 2.5 mm ²	22 A / 12 AWG
Rated short-time withstand current (1s)	300 A	
Rated voltage	1000 V	600 V
Impulse withstand voltage	8000 V	
Protection	IP20	NEMA 1

Mounting instructions

Rail	Wire stripping length	Tool (for flexible conductor without ferrule)
TH 35-7.5, TH 35-15	11 mm 0.433 in	Flat screwdriver Ø 3.5 mm Ø 0.138 in

The connecting capacity data for one Rigid - Solid / Stranded - Flexible conductor (when applicable) is a mandatory information required by IEC, UL and CSA standards. All other data are provided as supplementary information only. For more details, please consult our CB, UL or CSA certificates and technical datasheet available on <http://www.ABB.com>

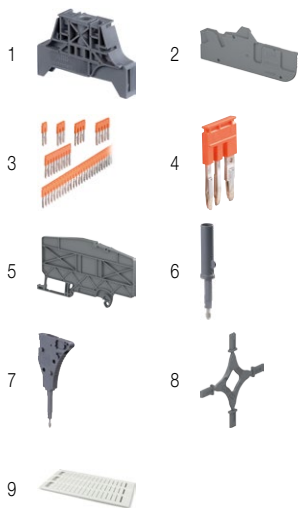


CDK2.5 CDK2.5-E

Female plugs

Description	Color	Type	Order code	Pkg qty	Weight (1 pce)
Female plugs 1 pole	Grey <input type="checkbox"/>	CDK2.5	1SNK805712R0000	50	2.8
Female plugs without outer nubs - Closed		CDK2.5-E	1SNK805713R0000	50	2.8

15 poles max.



Accessories

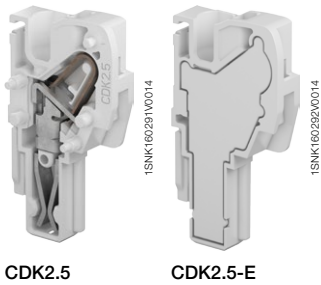
Description	Color	Type	Order code	Pkg qty	Weight (1 pce)	
1 End stops 10 mm 0.394 in	Dark grey <input type="checkbox"/>	BAM3	1SNK900001R0000	50	14.00	
2 End sections 2.2 mm 0.087 in	Dark grey <input type="checkbox"/>	EDK2.5-22	1SNK805910R0000	20	3.15	
3 Jumper bars	Orange <input type="checkbox"/>	2 poles 32 A 30 A	JB5-2	1SNK905302R0000	50	1.30
		3 poles 32 A 30 A	JB5-3	1SNK905303R0000	50	2.00
		4 poles 32 A 30 A	JB5-4	1SNK905304R0000	50	2.70
		5 poles 32 A 30 A	JB5-5	1SNK905305R0000	50	3.50
		10 poles 32 A 30 A	JB5-10	1SNK905310R0000	30	7.10
		50 poles 32 A 30 A	JB5-50	1SNK905350R0000	10	36.00
4 Cross spacing jumpers 32 A 30 A	Orange <input type="checkbox"/>	JB85-3	1SNK900603R0000	10	2.80	
5 Circuit separators 3 mm 0.118 in	Dark grey <input type="checkbox"/>	CS-R3	1SNK900107R0000	20	6.40	
6 Test adapters	Dark grey <input type="checkbox"/>	For test plugs DIA 2 mm 0.079 in	TP2	1SNK900203R0000	20	1.70
		For test plugs DIA 4 mm 0.157 in	TP4	1SNK900205R0000	20	2.40
7 Test connectors 5.2 mm 0.205 in	Dark grey <input type="checkbox"/>	TC5	1SNK900200R0000	10	5.20	
		TC5-R1	1SNK900201R0000	10	5.20	
		COP-ZD	1SNK900636R0000	10	3.57	
8 Coding pegs	Dark grey <input type="checkbox"/>	COP-ZD	1SNK900636R0000	10	3.57	
	White <input type="checkbox"/>	MC512	1SNK140000R0000	22	9.00	
	White <input type="checkbox"/>	MC512PA	1SNK149999R0000	20	10.00	
	Grey <input type="checkbox"/>	UMH	1SNK900611R0000	10	0.20	
9 Terminal block markers	Universal wire markers holder	White <input type="checkbox"/>	MG-CPM-13 41790	1960	0.236	
	Blank marker	White <input type="checkbox"/>	1SNB041790R0512			

Complete list of accessories is indicated in the terminal block datasheet. Some accessories such as jumper bars may modify the terminal block's ratings: complete information in the accessories catalogue pages.

All the technical data for UL/CSA standard and dimensions in inches are in italic. Technical data valid for copper conductors only.

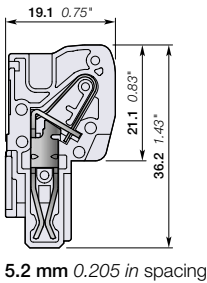
CDK2.5 female plugs

PI-Spring - 5.2 mm 0.205 in spacing



CDK2.5

CDK2.5-E



5.2 mm 0.205 in spacing

Description

- Create your own female plug assemblies without any special tools, easily snap together multiple plugs for optimal ergonomics and quick assembly,
- Increase your flexibility: eliminate stock of pre-configured female plugs, easily add an extra plug in case of needed modification,
- Reduce your stock of unitary plugs up to 30%: only two plug variants are required to compose your own subsets of plugs from 2 to 15 poles.

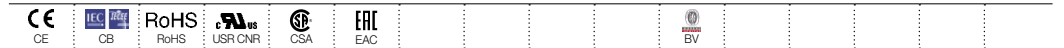
Ordering details

Description	Color	Type	Order code	Pkg qty	Weight (1 pce) g
Female plugs	Grey <input type="checkbox"/>	CDK2.5	1SNK805712R0000	50	2.8
Female plugs without outer nubs - Closed		CDK2.5-E	1SNK805713R0000	50	2.8

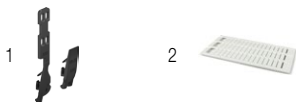
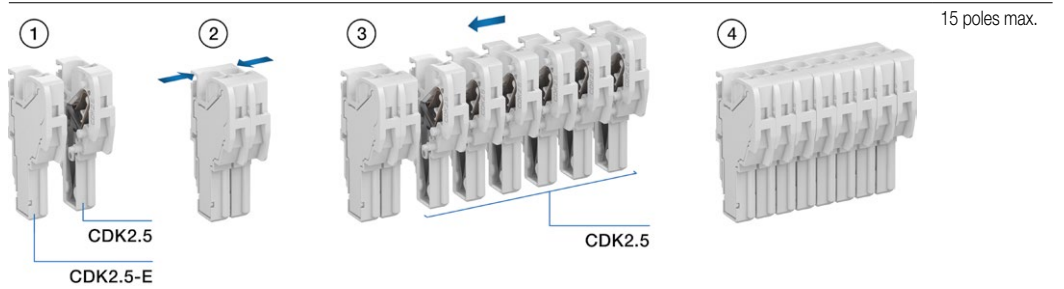
Main technical data

Connecting capacity	IEC	UL - CSA	Mounting instructions
1 conductor per clamp	Rigid - Solid / Stranded Flexible with non insulated ferrule with insulated ferrule	0.2 ... 4 mm ² 0.22 ... 2.5 mm ² 0.22 ... 2.5 mm ² 0.22 ... 2.5 mm ²	26 ... 12 AWG 26 ... 14 AWG 26 ... 14 AWG
2 conductors per clamp	Flexible with twin ferrule	0.22 ... 0.5 mm ²	26 ... 20 AWG
Rated current / Rated cross section	24 A / 2.5 mm ²	22 A / 12 AWG	
Rated short-time withstand current (1s)	300 A		
Rated voltage	1000 V	600 V	
Impulse withstand voltage	8000 V		
Protection	IP20	NEMA 1	

The connecting capacity data for one Rigid - Solid / Stranded - Flexible conductor (when applicable) is a mandatory information required by IEC, UL and CSA standards. All other data are provided as supplementary information only. For more details, please consult our CB, UL or CSA certificates and technical datasheet available on <http://www.ABB.com>



Mounting instructions



Accessories

Description	Color	Type	Order code	Pkg qty	Weight (1 pce) g		
1 Locking devices	Black <input type="checkbox"/>	VR-ZD	1SNK900637R0000	50	6.5		
		VR-ZD-R1	1SNK900638R0000	50	1.04		
2 Terminal block markers	White <input type="checkbox"/>	MC512	1SNK140000R0000	22	9.00		
		MC512PA	1SNK149999R0000	20	10.00		
	White <input type="checkbox"/>	Universal wire markers holder	Grey <input type="checkbox"/>	UMH	1SNK900611R0000	10	0.20
		Blank marker	White <input type="checkbox"/>	MG-CPM-13 41790	1SNB041790R0512	1960	0.236
Blank strip label		MG-CPMFA 43196	1SNB043196R0012	350	2.562		

Complete list of accessories is indicated in the terminal block datasheet. Some accessories such as jumper bars may modify the terminal block's ratings: complete information in the accessories catalogue pages.

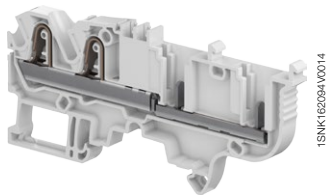
All the technical data for UL/CSA standard and dimensions in inches are in italic. Technical data valid for copper conductors only.

ZDK4-22 pluggable terminal blocks

PI-Spring - Feed-through - 6 mm 0.236 in spacing

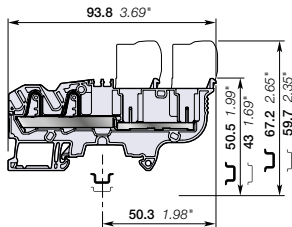


4 mm²
10 AWG



1SNK162094V0014

ZDK4-22



6 mm 0.236 in spacing

Description

- Increase your productivity with pluggable terminal blocks: possibility of pre-produced plugs harnesses, time saving plug and play assembly, reduced transportation panels preparation and final installation, easily connect sub-assemblies together,
- Simplify and secure your installation: in site faulty connection errors are eliminated, prior connection testing is eased and reliable, test connectors (TC5-R1 + ES-TC6) withstanding 10 000 operations are compatible for convenient testing.

Ordering details

Description	Color	Type	Order code	Pkg qty	Weight (1 pce)
Feed-through 4 connections	Grey <input type="checkbox"/>	ZDK4-22	1SNK806010R0000	50	14.3

Main technical data

Connecting capacity		IEC	UL - CSA	Mounting instructions	
1 conductor per clamp	Rigid - Solid / Stranded	0.5 ... 6 mm ²	26 ... 10 AWG	Rail	TH 35-7.5, TH 35-15
	Flexible	0.5 ... 4 mm ²	26 ... 12 AWG	Wire stripping length	12.5 mm 0.492 in
	with non insulated ferrule	0.5 ... 4 mm ²	26 ... 12 AWG	Tool (for flexible conductor without ferrule)	Flat screwdriver Ø 3.5 mm Ø 0.138 in
	with insulated ferrule	0.5 ... 4 mm ²	26 ... 12 AWG		
2 conductors per clamp	Flexible with twin ferrule	0.5 ... 1 mm ²	26 ... 18 AWG		
Rated current / Rated cross section		30 A / 4 mm ²	30 A / 10 AWG		
Rated short-time withstand current (1s)		480 A			
Rated voltage		1000 V	600 V		
Impulse withstand voltage		8000 V			
Protection		IP20	NEMA 1		

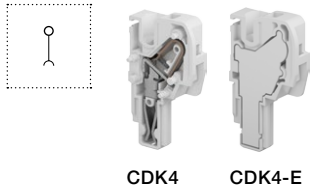
The connecting capacity data for one Rigid - Solid / Stranded - Flexible conductor (when applicable) is a mandatory information required by IEC, UL and CSA standards. All other data are provided as supplementary information only. For more details, please consult our CB, UL or CSA certificates and technical datasheet available on <http://www.ABB.com>



Female plugs

Description	Color	Type	Order code	Pkg qty	Weight (1 pce)
Female plugs 1 pole	Grey <input type="checkbox"/>	CDK4	1SNK806712R0000	50	3.8
Female plugs without outer nubs - Closed		CDK4-E	1SNK806713R0000	50	4.5

15 poles max.



CDK4 CDK4-E

Accessories

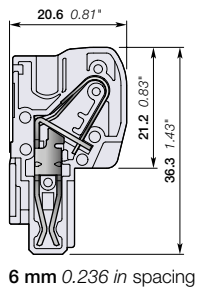
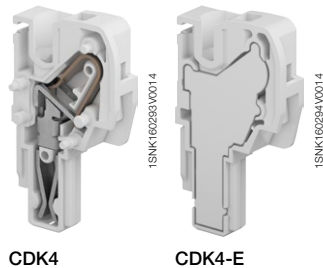
Description	Color	Type	Order code	Pkg qty	Weight (1 pce)	
1 End stops 10 mm 0.394 in	Dark grey <input type="checkbox"/>	BAM3	1SNK900001R0000	50	14.00	
2 End sections 2.2 mm 0.087 in	Dark grey <input type="checkbox"/>	EDK2.5-22	1SNK805910R0000	20	3.15	
3 Jumper bars	Orange <input type="checkbox"/>	2 poles 41 A 30 A	JB6-2	1SNK906302R0000	50	1.30
		3 poles 41 A 30 A	JB6-3	1SNK906303R0000	50	2.10
		4 poles 41 A 30 A	JB6-4	1SNK906304R0000	50	2.90
		5 poles 41 A 30 A	JB6-5	1SNK906305R0000	50	3.60
		10 poles 41 A 30 A	JB6-10	1SNK906310R0000	20	7.40
		50 poles 41 A 30 A	JB6-50	1SNK906350R0000	10	38.10
4 Cross spacing jumpers 32 A 30 A	Orange <input type="checkbox"/>	JB85-3	1SNK900603R0000	10	2.80	
5 Circuit separators 3 mm 0.118 in	Dark grey <input type="checkbox"/>	CS-R3	1SNK900107R0000	20	6.40	
6 Test adapters For test plugs DIA 2 mm 0.079 in For test plugs DIA 4 mm 0.157 in	Dark grey <input type="checkbox"/>	TP2	1SNK900203R0000	20	1.70	
		TP4	1SNK900205R0000	20	2.40	
7 Test connectors 5.2 mm 0.205 in	Dark grey <input type="checkbox"/>	TC5-R1	1SNK900201R0000	10	5.20	
8 Spacers 0.8 mm 0.031 in	Dark grey <input type="checkbox"/>	ES-TC6	1SNK900105R0000	10	0.80	
9 Coding pegs	Dark grey <input type="checkbox"/>	COP-ZD	1SNK900636R0000	10	3.57	
	White <input type="checkbox"/>	MC612	1SNK150000R0000	22	10.00	
	White <input type="checkbox"/>	MC612PA	1SNK159999R0000	20	11.00	
10 Terminal block markers	Grey <input type="checkbox"/>	UMH	1SNK900611R0000	10	0.20	
	White <input type="checkbox"/>	MG-CPM-13 41791	1SNB041791R0612	1680	0.273	

Complete list of accessories is indicated in the terminal block datasheet. Some accessories such as jumper bars may modify the terminal block's ratings: complete information in the accessories catalogue pages.

All the technical data for UL/CSA standard and dimensions in inches are in italic. Technical data valid for copper conductors only.

CDK4 female plugs

PI-Spring - 6 mm 0.236 in spacing



6 mm 0.236 in spacing

Description

- Create your own female plug assemblies without any special tools, easily snap together multiple plugs for optimal ergonomics and quick assembly,
- Increase your flexibility: eliminate stock of pre-configured female plugs, easily add an extra plug in case of needed modification,
- Reduce your stock of unitary plugs up to 30%: only two plug variants are required to compose your own subsets of plugs from 2 to 15 poles.

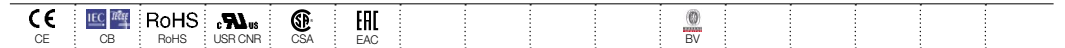
Ordering details

Description	Color	Type	Order code	Pkg qty	Weight (1 pce) g
Female plugs	Grey <input type="checkbox"/>	CDK4	1SNK806712R0000	50	3.8
Female plugs without outer nubs - Closed		CDK4-E	1SNK806713R0000	50	4.5

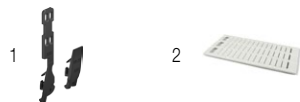
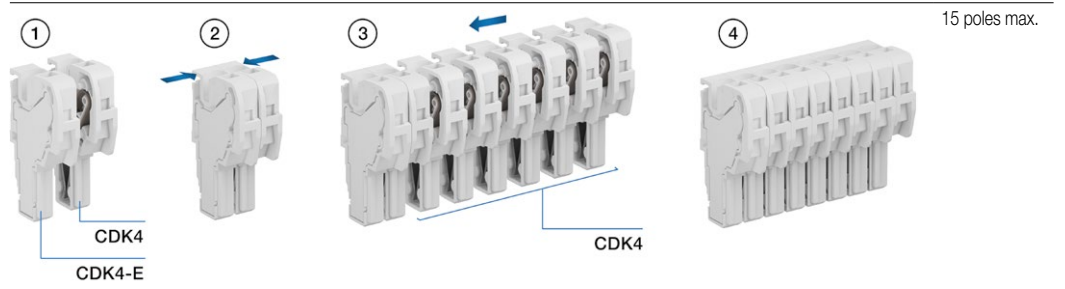
Main technical data

Connecting capacity	IEC	UL - CSA	Mounting instructions
1 conductor per clamp	Rigid - Solid / Stranded Flexible with non insulated ferrule with insulated ferrule	0.5 ... 6 mm ² 0.5 ... 4 mm ² 26 ... 10 AWG 26 ... 12 AWG 26 ... 12 AWG	Rail Wire stripping length 12.5 mm 0.492 in
2 conductors per clamp	Flexible with twin ferrule	0.5 ... 1 mm ² 26 ... 18 AWG	Tool (for flexible conductor without ferrule) Flat screwdriver Ø 3.5 mm Ø 0.138 in
Rated current / Rated cross section	30 A / 4 mm ²	30 A / 10 AWG	
Rated short-time withstand current (1s)	480 A		
Rated voltage	1000 V	600 V	
Impulse withstand voltage	8000 V		
Protection	IP20	NEMA 1	

The connecting capacity data for one Rigid - Solid / Stranded - Flexible conductor (when applicable) is a mandatory information required by IEC, UL and CSA standards. All other data are provided as supplementary information only. For more details, please consult our CB, UL or CSA certificates and technical datasheet available on <http://www.ABB.com>



Mounting instructions



Accessories

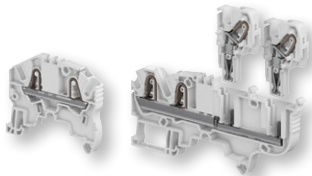
Description	Color	Type	Order code	Pkg qty	Weight (1 pce) g
1 Locking devices	Black <input checked="" type="checkbox"/>	VR-ZD	1SNK900637R0000	50	6.5
		VR-ZD-R1	1SNK900638R0000	50	1.04
2 Terminal block markers	White <input type="checkbox"/>	MC612	1SNK150000R0000	22	10.00
		MC612PA	1SNK159999R0000	20	11.00
	Grey <input type="checkbox"/>	UMH	1SNK900611R0000	10	0.20
		MG-CPMFA 43196	1SNB043196R0012	350	2.562
Blank marker	White <input type="checkbox"/>	MG-CPM-13 41791	1SNB041791R0612	1680	0.273

Complete list of accessories is indicated in the terminal block datasheet. Some accessories such as jumper bars may modify the terminal block's ratings: complete information in the accessories catalogue pages.

All the technical data for UL/CSA standard and dimensions in inches are in italic. Technical data valid for copper conductors only.

Overview of terminal block ranges for railway

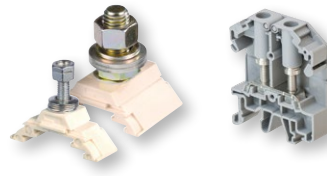
Rolling stock



SNK series terminal blocks PI-Spring and pluggable technologies

The SNK PI-Spring terminal blocks offer the benefits of both push-in and spring as well as time savings, stock reduction and secured installations.

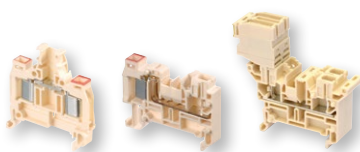
- Connecting capacity from 0.22 to 16 mm² (26 to 4 AWG)
- Functions: feed-through, disconnect, fuse, component holder...
- Smart design of product and accessories for savings on installation, wiring and commissioning.



Stud terminal blocks

The stud terminal blocks allow power distribution with a large scope of functions and sizes :

- Connecting capacity from 0.5 to 185 mm²
- Compact one stud versions
- High density wiring with 2 studs versions
- Stud/quick-connect versions for signal distribution
- Ring lug terminal blocks with captive nut from 2.5 to 25 mm².



ADO System® terminal blocks (IDC)

The ADO system® terminal blocks based on insulation displacement (IDC) technology offer significant productivity savings as well as secure and reliable connection.

- Connecting capacity from 0.6 to 4.32 mm²
- Pluggable technology available.



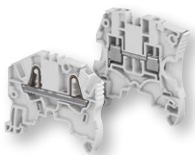
Quick connect terminal blocks

The quick connect terminal blocks allow high density wiring as well as control signal distribution:

- Connecting capacity 6 mm² maxi
- Vertical/horizontal versions
- Component holder versions (diodes, resistor...).

applications

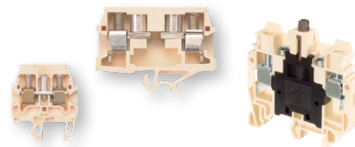
Infrastructures



SNK series terminal blocks PI-Spring and screw clamp technologies

The SNK terminal blocks offers all functions and solutions required for railway infrastructures:

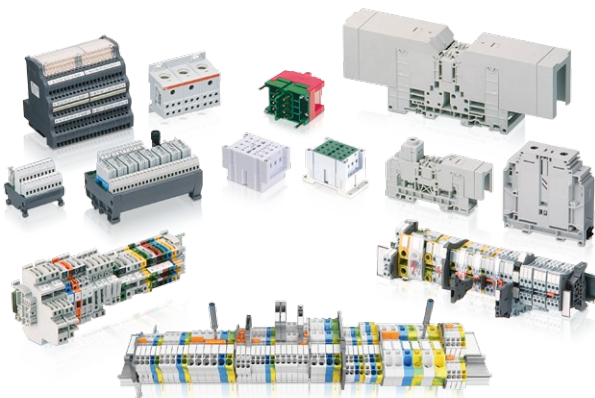
- Connecting capacity from 0.2 to 95 mm² (24 AWG to 0000 Kcmil)
- Functions: feed-through, disconnect, fuse, test, component holder...
- Smart Design of product and accessories for savings on installation, wiring and commissioning.



Screw clamp terminal blocks in accordance with NF F 55251 standard

These terminal blocks complies with the French standard for "stationary railway applications" NF F 55251:

- Connecting capacity up to 10 mm²
- Feed-through, disconnect and test functions.



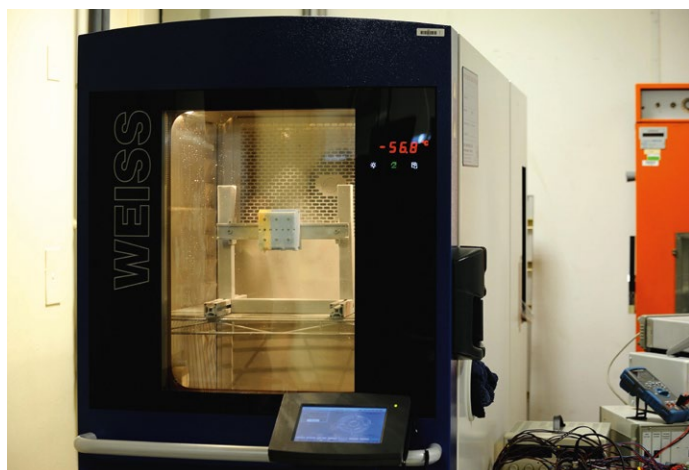
Connection devices offering

All ABB terminal blocks and solutions can be used for infrastructure applications.

Select from one of the largest connection offering on the market with various technologies: screw, PI-Spring (Push-in and spring), spring, IDC, pluggable, stud... technologies found in over 8000 products and solutions.

Standards and compliance

Rail vehicles are subjected to extreme environmental conditions (high vibration and shock), corrosion (underground applications or tunnels). ABB terminal blocks are tested in accordance with the latest and most demanding standards applying to rolling stock applications.



IEC 61373 Railway applications – Rolling stock equipment – Shock and vibration tests

ABB terminal blocks are complying with **category 1 (body mounted) class B**.

EN 45545-2 Railway applications. Fire protection on railway vehicles. Requirements for fire behavior of materials and components

ABB terminal blocks plastic materials are rated **HL3 R22 (the highest Hazard level)**. They can be used on vehicles for subway, tube, sleeping and couchette.

NF F 16-101 Directive relative to selecting materials in relation to their fire resistance in terms of its behavior in a fire, the opacity of smoke and the toxicity of the gas released.

NF F 16-102 Complement to NF F 16-101. The purpose of this standard is to specify the application of NF F 16-101 to electrical equipment and especially to individual apparatus.

ABB terminal blocks plastic materials are rated **I2F2. Level 3**. This level concern products mounted inside a room for passengers or running crew.

UL94 (North America) Standard for Safety of Flammability of Plastic Materials for Parts in Devices and Appliances testing

ABB terminal blocks plastic materials are rated **UL94 V0**.

NFPA 130 (North America) Standard for Fixed Guideway Transit and Passenger Rail Systems

ABB terminal blocks plastic materials complies with **NFPA130 per ASTM E 162** and **ASTM E 662** standards tests. It also complies with **FRA238.103** and **BSS 7239** standards.

Railway solutions and tools

Customized terminal block assemblies

A complete solution to ease and optimize your manufacturing processes

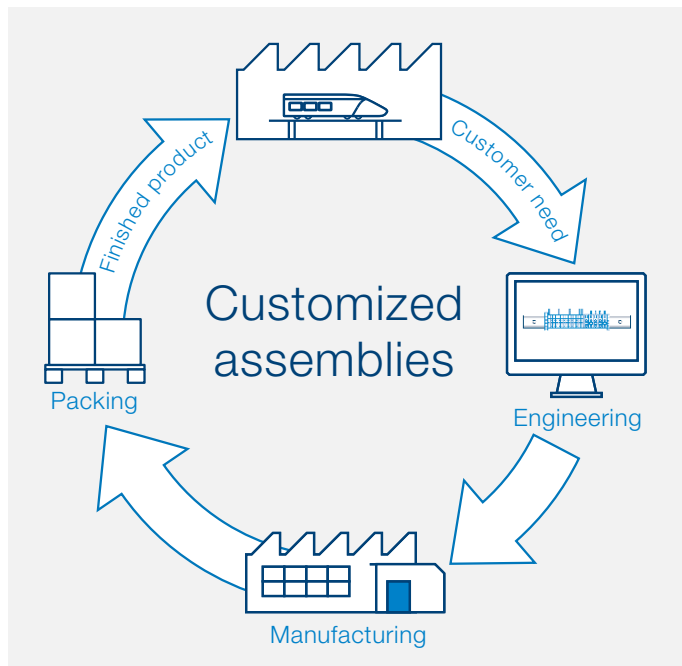
Benefit from ABB's expertise to help you in all the steps of terminal block assembly engineering customized to your requirements.

Your benefits

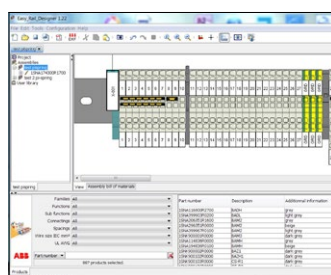
- Cost saving using pre-assembled terminal blocks
- Less parts to purchase and manage
- Simplification of processes through outsourced mounting operations
- ABB quality guaranty
- Complete drawings and technical files.

Our offering

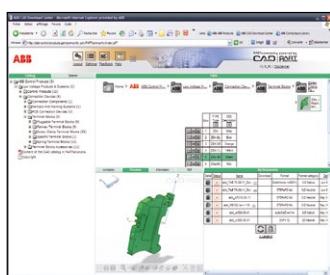
- Pre-assembled and pre-marked din rail assemblies
- Pre-assembled kits
- Non-assembled kits.



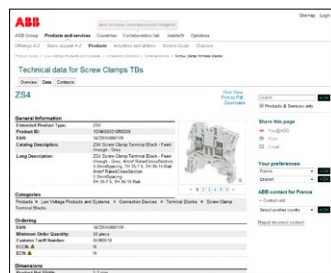
Tools



Easy Rail Designer software to ease the design of rail assemblies



Cadenas portal: Download 2D or 3D files according to your needs (STEP, IGES...)



For product detailed information, use product type or order code, ex:
www.abb.com/productdetails/ZS4 or
www.abb.com/productdetails/1SNK505010R0000

Web



<http://new.abb.com/low-voltage/industries/rail>

**SNK series
Terminal blocks
in your pocket**



The ABB website compatible with Smartphones and tablets gives you all the information you need.

Always updated
Always available
Stay connected!

Index

Order code classification

Order code	Type	Page	Order code	Type	Page	Order code	Type	Page
1SNB041790R0512	MG-CPM-13 41790	36	1SNK706030R0000	ZK4-OR	9	1SNK905304R0000	JB5-4	6
1SNB041791R0612	MG-CPM-13 41791	38	1SNK706031R0000	ZK4-3P-OR	10	1SNK905305R0000	JB5-5	6
1SNB043196R0012	MG-CPMFA 43196	37	1SNK706032R0000	ZK4-4P-OR	11	1SNK905310R0000	JB5-10	6
1SNK140000R0000	MC512	6	1SNK706150R0000	ZK4-PE	19	1SNK905350R0000	JB5-50	6
1SNK149999R0000	MC512PA	6	1SNK706151R0000	ZK4-PE-3P	20	1SNK906302R0000	JB6-2	9
1SNK150000R0000	MC612	9	1SNK706152R0000	ZK4-PE-4P	21	1SNK906303R0000	JB6-3	9
1SNK159999R0000	MC612PA	9	1SNK706310R0000	ZK2.5-S-R1	27	1SNK906304R0000	JB6-4	9
1SNK160000R0000	MC812	12	1SNK706410R0000	ZK2.5-SF	29	1SNK906305R0000	JB6-5	9
1SNK169999R0000	MC812PA	12	1SNK706411R0000	ZK2.5-SF-R1	30	1SNK906310R0000	JB6-10	9
1SNK705010R0000	ZK2.5	6	1SNK706412R0000	ZK2.5-SF-R3	30	1SNK906350R0000	JB6-50	9
1SNK705011R0000	ZK2.5-3P	7	1SNK708010R0000	ZK6	12	1SNK908302R0000	JB8-2	12
1SNK705012R0000	ZK2.5-4P	8	1SNK708011R0000	ZK6-3P	13	1SNK908303R0000	JB8-3	12
1SNK705020R0000	ZK2.5-BL	6	1SNK708020R0000	ZK6-BL	12	1SNK908304R0000	JB8-4	12
1SNK705021R0000	ZK2.5-3P-BL	7	1SNK708021R0000	ZK6-3P-BL	13	1SNK908305R0000	JB8-5	12
1SNK705022R0000	ZK2.5-4P-BL	8	1SNK708030R0000	ZK6-OR	12	1SNK908310R0000	JB8-10	12
1SNK705030R0000	ZK2.5-OR	6	1SNK708031R0000	ZK6-3P-OR	13	1SNK910302R0000	JB10-2	14
1SNK705031R0000	ZK2.5-3P-OR	7	1SNK708150R0000	ZK6-PE	22	1SNK910303R0000	JB10-3	14
1SNK705032R0000	ZK2.5-4P-OR	8	1SNK708151R0000	ZK6-PE-3P	23	1SNK910304R0000	JB10-4	14
1SNK705060R0000	ZK2.5-YL	6	1SNK708911R0000	EK6-3P	13	1SNK910305R0000	JB10-5	14
1SNK705061R0000	ZK2.5-GN	6	1SNK710010R0000	ZK10	14	1SNK910310R0000	JB10-10	14
1SNK705062R0000	ZK2.5-RD	6	1SNK710020R0000	ZK10-BL	14	1SNK912302R0000	JB12-2	15
1SNK705065R0000	ZK2.5-WH	6	1SNK710030R0000	ZK10-OR	14	1SNK912303R0000	JB12-3	15
1SNK705066R0000	ZK2.5-BK	6	1SNK710150R0000	ZK10-PE	24	1SNK912305R0000	JB12-5	15
1SNK705067R0000	ZK2.5-3P-YL	7	1SNK710910R0000	EK10	14			
1SNK705068R0000	ZK2.5-3P-GN	7	1SNK712010R0000	ZK16	15			
1SNK705069R0000	ZK2.5-3P-RD	7	1SNK712020R0000	ZK16-BL	15			
1SNK705072R0000	ZK2.5-3P-WH	7	1SNK712150R0000	ZK16-PE	25			
1SNK705073R0000	ZK2.5-3P-BK	7	1SNK805010R0000	ZDK2.5-22	36			
1SNK705074R0000	ZK2.5-4P-YL	8	1SNK805712R0000	CDK2.5	37			
1SNK705075R0000	ZK2.5-4P-GN	8	1SNK805713R0000	CDK2.5-E	37			
1SNK705076R0000	ZK2.5-4P-RD	8	1SNK805910R0000	EDK2.5-22	36			
1SNK705079R0000	ZK2.5-4P-WH	8	1SNK806010R0000	ZDK4-22	38			
1SNK705080R0000	ZK2.5-4P-BK	8	1SNK806712R0000	CDK4	39			
1SNK705150R0000	ZK2.5-PE	16	1SNK806713R0000	CDK4-E	39			
1SNK705151R0000	ZK2.5-PE-3P	17	1SNK900002R0000	BAZ1	6			
1SNK705152R0000	ZK2.5-PE-4P	18	1SNK900102R0000	BAZH1	31			
1SNK705210R0000	ZK2.5-D2	31	1SNK900104R0000	ES-TC8	12			
1SNK705211R0000	ZK2.5-D1	32	1SNK900105R0000	ES-TC6	9			
1SNK705212R0000	ZK2.5-D2-PE	33	1SNK900106R0000	CS-R2	6			
1SNK705220R0000	ZK2.5-D2-BL	31	1SNK900107R0000	CS-R3	7			
1SNK705250R0000	ZK2.5-D1-PE	34	1SNK900200R0000	TC5	6			
1SNK705310R0000	ZK2.5-S	26	1SNK900201R0000	TC5-R1	6			
1SNK705311R0000	ZK2.5-SP	28	1SNK900203R0000	TP2	6			
1SNK705320R0000	ZK2.5-S-BL	26	1SNK900205R0000	TP4	6			
1SNK705330R0000	ZK2.5-S-OR	26	1SNK900401R0000	PG5	28			
1SNK705910R0000	EK2.5	6	1SNK900402R0000	PG5-R1	28			
1SNK705911R0000	EK2.5-3P	7	1SNK900601R0000	SHBP	6			
1SNK705912R0000	EK2.5-4P	8	1SNK900602R0000	SHB	31			
1SNK705960R0000	EK2.5-D2	31	1SNK900603R0000	JB85-3	6			
1SNK706010R0000	ZK4	9	1SNK900611R0000	UMH	6			
1SNK706011R0000	ZK4-3P	10	1SNK900636R0000	COP-ZD	36			
1SNK706012R0000	ZK4-4P	11	1SNK900637R0000	VR-ZD	37			
1SNK706020R0000	ZK4-BL	9	1SNK900638R0000	VR-ZD-R1	37			
1SNK706021R0000	ZK4-3P-BL	10	1SNK905302R0000	JB5-2	6			
1SNK706022R0000	ZK4-4P-BL	11	1SNK905303R0000	JB5-3	6			

Index

Type classification

Type	Order code	Page	Type	Order code	Page	Type	Order code	Page
BAZ1	1SNK900002R0000	6	SHB	1SNK900602R0000	31	ZK2.5-S-R1	1SNK706310R0000	27
BAZH1	1SNK900102R0000	31	SHBP	1SNK900601R0000	6	ZK2.5-WH	1SNK705065R0000	6
CDK2.5	1SNK805712R0000	37	TC5	1SNK900200R0000	6	ZK2.5-YL	1SNK705060R0000	6
CDK2.5-E	1SNK805713R0000	37	TC5-R1	1SNK900201R0000	6	ZK4	1SNK706010R0000	9
CDK4	1SNK806712R0000	39	TP2	1SNK900203R0000	6	ZK4-3P	1SNK706011R0000	10
CDK4-E	1SNK806713R0000	39	TP4	1SNK900205R0000	6	ZK4-3P-BL	1SNK706021R0000	10
COP-ZD	1SNK900636R0000	36	UMH	1SNK900611R0000	6	ZK4-3P-OR	1SNK706031R0000	10
CS-R2	1SNK900106R0000	6	VR-ZD	1SNK900637R0000	37	ZK4-4P	1SNK706012R0000	11
CS-R3	1SNK900107R0000	7	VR-ZD-R1	1SNK900638R0000	37	ZK4-4P-BL	1SNK706022R0000	11
EDK2.5-22	1SNK805910R0000	36	ZDK2.5-22	1SNK805010R0000	36	ZK4-4P-OR	1SNK706032R0000	11
EK10	1SNK710910R0000	14	ZDK4-22	1SNK806010R0000	38	ZK4-BL	1SNK706020R0000	9
EK2.5	1SNK705910R0000	6	ZK10	1SNK710010R0000	14	ZK4-OR	1SNK706030R0000	9
EK2.5-3P	1SNK705911R0000	7	ZK10-BL	1SNK710020R0000	14	ZK4-PE	1SNK706150R0000	19
EK2.5-4P	1SNK705912R0000	8	ZK10-OR	1SNK710030R0000	14	ZK4-PE-3P	1SNK706151R0000	20
EK2.5-D2	1SNK705960R0000	31	ZK10-PE	1SNK710150R0000	24	ZK4-PE-4P	1SNK706152R0000	21
EK6-3P	1SNK708911R0000	13	ZK16	1SNK712010R0000	15	ZK6	1SNK708010R0000	12
ES-TC6	1SNK900105R0000	9	ZK16-BL	1SNK712020R0000	15	ZK6-3P	1SNK708011R0000	13
ES-TC8	1SNK900104R0000	12	ZK16-PE	1SNK712150R0000	25	ZK6-3P-BL	1SNK708021R0000	13
JB10-10	1SNK910310R0000	14	ZK2.5	1SNK705010R0000	6	ZK6-3P-OR	1SNK708031R0000	13
JB10-2	1SNK910302R0000	14	ZK2.5-3P	1SNK705011R0000	7	ZK6-BL	1SNK708020R0000	12
JB10-3	1SNK910303R0000	14	ZK2.5-3P-BK	1SNK705073R0000	7	ZK6-OR	1SNK708030R0000	12
JB10-4	1SNK910304R0000	14	ZK2.5-3P-BL	1SNK705021R0000	7	ZK6-PE	1SNK708150R0000	22
JB10-5	1SNK910305R0000	14	ZK2.5-3P-GN	1SNK705068R0000	7	ZK6-PE-3P	1SNK708151R0000	23
JB12-2	1SNK912302R0000	15	ZK2.5-3P-OR	1SNK705031R0000	7			
JB12-3	1SNK912303R0000	15	ZK2.5-3P-RD	1SNK705069R0000	7			
JB12-5	1SNK912305R0000	15	ZK2.5-3P-WH	1SNK705072R0000	7			
JB5-10	1SNK905310R0000	6	ZK2.5-3P-YL	1SNK705067R0000	7			
JB5-2	1SNK905302R0000	6	ZK2.5-4P	1SNK705012R0000	8			
JB5-3	1SNK905303R0000	6	ZK2.5-4P-BK	1SNK705080R0000	8			
JB5-4	1SNK905304R0000	6	ZK2.5-4P-BL	1SNK705022R0000	8			
JB5-5	1SNK905305R0000	6	ZK2.5-4P-GN	1SNK705075R0000	8			
JB5-50	1SNK905350R0000	6	ZK2.5-4P-OR	1SNK705032R0000	8			
JB6-10	1SNK906310R0000	9	ZK2.5-4P-RD	1SNK705076R0000	8			
JB6-2	1SNK906302R0000	9	ZK2.5-4P-WH	1SNK705079R0000	8			
JB6-3	1SNK906303R0000	9	ZK2.5-4P-YL	1SNK705074R0000	8			
JB6-4	1SNK906304R0000	9	ZK2.5-BK	1SNK705066R0000	6			
JB6-5	1SNK906305R0000	9	ZK2.5-BL	1SNK705020R0000	6			
JB6-50	1SNK906350R0000	9	ZK2.5-D1	1SNK705211R0000	32			
JB8-10	1SNK908310R0000	12	ZK2.5-D1-PE	1SNK705250R0000	34			
JB8-2	1SNK908302R0000	12	ZK2.5-D2	1SNK705210R0000	31			
JB8-3	1SNK908303R0000	12	ZK2.5-D2-BL	1SNK705220R0000	31			
JB8-4	1SNK908304R0000	12	ZK2.5-D2-PE	1SNK705212R0000	33			
JB8-5	1SNK908305R0000	12	ZK2.5-GN	1SNK705061R0000	6			
JB85-3	1SNK900603R0000	6	ZK2.5-OR	1SNK705030R0000	6			
MC512	1SNK140000R0000	6	ZK2.5-PE	1SNK705150R0000	16			
MC512PA	1SNK149999R0000	6	ZK2.5-PE-3P	1SNK705151R0000	17			
MC612	1SNK150000R0000	9	ZK2.5-PE-4P	1SNK705152R0000	18			
MC612PA	1SNK159999R0000	9	ZK2.5-RD	1SNK705062R0000	6			
MC812	1SNK160000R0000	12	ZK2.5-S	1SNK705310R0000	26			
MC812PA	1SNK169999R0000	12	ZK2.5-S-BL	1SNK705320R0000	26			
MG-CPM-13 41790	1SNB041790R0512	36	ZK2.5-SF	1SNK706410R0000	29			
MG-CPM-13 41791	1SNB041791R0612	38	ZK2.5-SF-R1	1SNK706411R0000	30			
MG-CPMFA 43196	1SNB043196R0012	37	ZK2.5-SF-R3	1SNK706412R0000	30			
PG5	1SNK900401R0000	28	ZK2.5-S-OR	1SNK705330R0000	26			
PG5-R1	1SNK900402R0000	28	ZK2.5-SP	1SNK705311R0000	28			

Contact us

ABB France

Low Voltage Products Division

3, rue Jean Perrin

F-69687 Chassieu cedex / France

You can find the address of your local sales organisation on the ABB home page



<http://new.abb.com/low-voltage/connection>



<http://new.abb.com/low-voltage/industries/rail>

Join the ABB Low Voltage Products Rail Club!



Register now!

on www.ourdoconline.com/railway/

Note

We reserve the right to make technical changes or modify the contents of this document without prior notice.

ABB does not accept any responsibility whatsoever for potential errors or possible lack of information in this document.

We reserve all rights in this document and in the subject matter and illustrations contained therein. Any reproduction, disclosure to third parties or utilization of its contents – in whole or in parts – is forbidden without prior written consent of ABB.

Copyright© 2015 ABB - All rights reserved