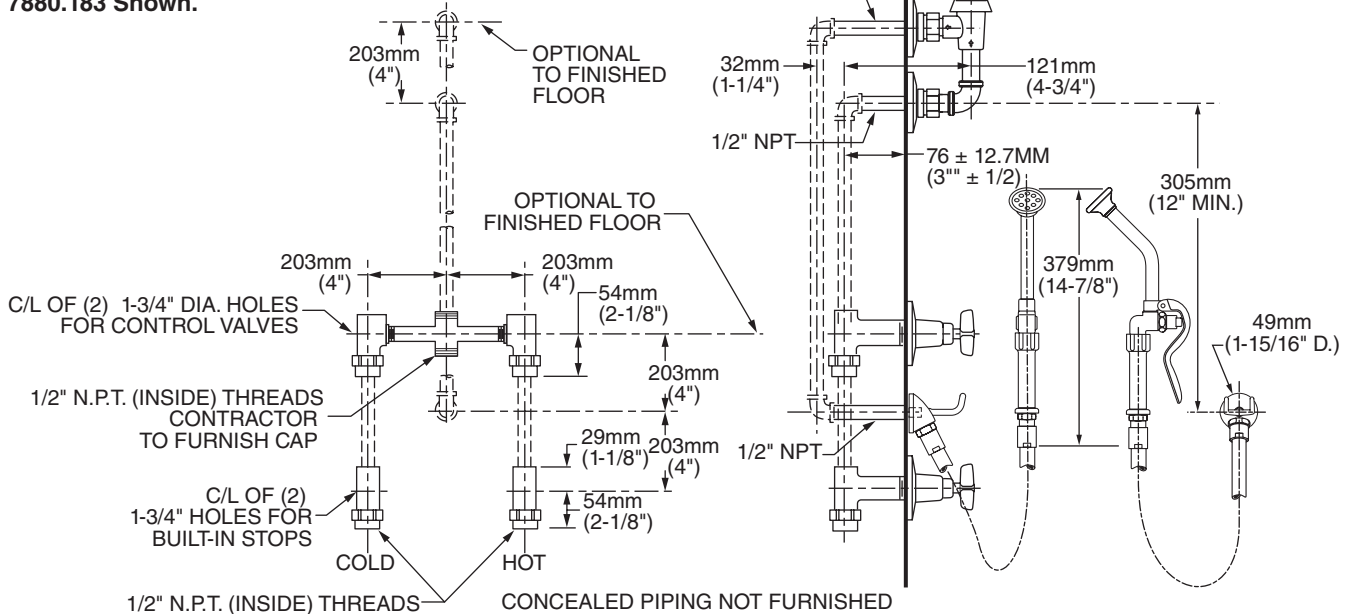


**7880.183 Shown.**



## GENERAL DESCRIPTION:

Cast brass construction. By-pass valve on 8" centers. Supply stops. Washerless ceramic disc valve cartridge. Heritage Cross Handles. Built-in wall mounted hook for spray end. 4' rubber hose. Single supply nozzle with 10" spray with self-closing handle. Atmospheric vacuum breaker with top outlet to provide back flow protection.

## PRODUCT FEATURES:

**Brass Construction:** Durable - excellent in high use applications.

**Ceramic Disc Valving:** Assures a lifetime of drip free performance.

**Supply Nozzle:** Cast brass with self-closing nozzle and built-in hook to hold spray end. Wall mounted.

**Vacuum Breaker:** Brass housing, ells and nipples with back flow preventer.

**Polished Chrome Finish:** Excellent in commercial applications.

## SUGGESTED SPECIFICATION

Bedpan Cleanser Assembly shall feature a wall mounted single inlet supply nozzle with self-closing handle and built-in hook. Shall feature a by-pass valve (on 8" centers) and supply stops with washerless ceramic disc valving. Back flow protection to be provided by vacuum breaker with top outlet. Cast brass construction throughout. Fitting shall be American Standard Model# 7880.183.002.