

CROUSE-HINDS
SERIES

B-LINE
SERIES

Increase Productivity

Commercial construction solutions

EATON

Powering Business Worldwide

Safety. Efficiency. Project Management.



From commercial office spaces and classrooms to manufacturing floors, from stadiums to hotels and retail, Eaton offers Crouse-Hinds series and B-Line series products, services and resources that reduce complexity, speed installation and help maximize the overall return on your investment.



Productivity IQ >>

Work smarter, not harder.

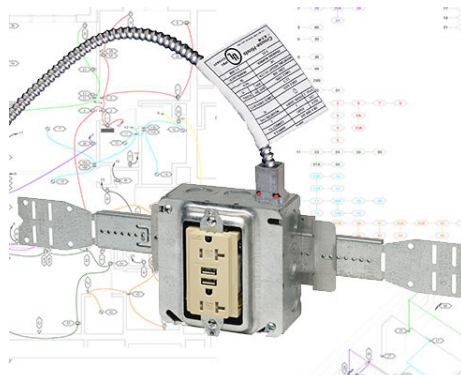
Products, services and tools to minimize complexity, increase efficiency and maximize your profit.

At Eaton, we listen to our customers' challenges and provide solutions to meet their needs. We design products, services and tools to help you reduce complexity before, during and after the install. We focus on innovation solutions that increase efficiency and maximize the return on your investment.

This brochure contains mechanical, electrical, plumbing, fire protection solutions for commercial buildings. Our dedicated Productivity IQ site includes additional resources, such as educational content, quick-tip videos, success stories, white papers, resources and more.

Explore resources at Eaton.com/Productivity-IQ.

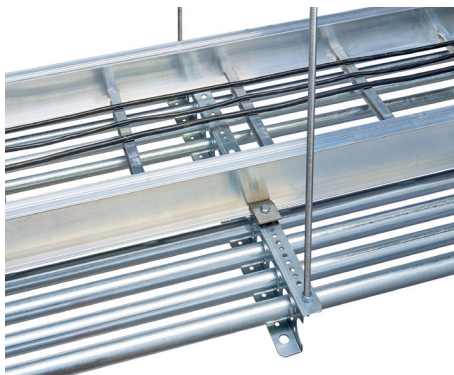
Ruff-IN prefabricated assemblies



Learn how to simplify your next project with prefab solutions.

Eaton.com/Ruff-IN

Conduit trapeze support



Learn how you can save up to 50% on your next trapeze install.

Eaton.com/conduit-support

KwikSplice cable channel



Learn how to reduce complexity and speed installs.

Eaton.com/KSCC

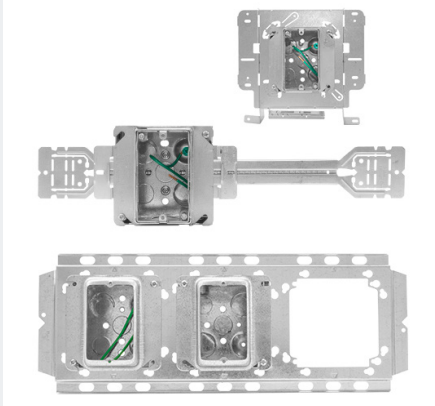
Electrical prefabricated solutions

Simplify construction site projects

As contractors and distributors are being called upon to support the changing needs of their customers, Eaton offers ways to help reduce complexity and speed installation.

- Reduce material management and spot buying of material
- Reduce complexity on the jobsite
- Reduce job site waste
- Speed installation
- Help improve safety
- Keep skilled electricians doing skilled work

Productivity solution spotlight



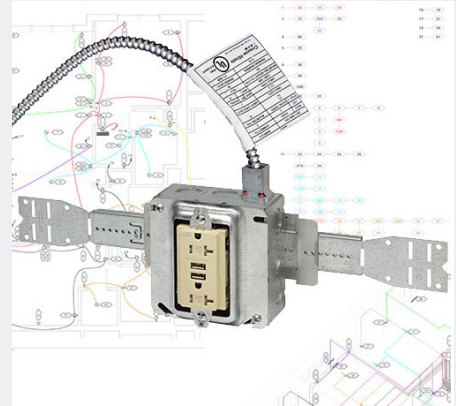
Ruff-IN made-to-stock solutions

Consist of the most popular drawn and welded boxes with ground screw and pigtail lead already installed. Basic assemblies are factory assembled and available for immediate shipment from factory stock.



Ruff-IN made-to-order solutions

Consist of our extensive line of brackets, boxes, plaster rings, wiring devices, push-in connectors and other branch wiring accessories. Can be ordered with devices, cable leads and fittings, or connectors and/or plaster ring or wiring device protect plate. Assembled from stock components to meet tight job requirements.



Ruff-IN engineered-to-order solutions

A complete turn-key solution; the process begins with your architectural and engineering drawings and results in custom assemblies manufactured and shipped to meet your job requirements and timelines. Ideal for hotels, condos, commercial and retail offices, hospitals and apartments.

Learn more at Eaton.com/Ruff-IN

Outlet boxes and covers

Improve productivity with time-saving solutions

Crouse-Hinds series boxes and covers save time in installation and are ideal for use where a number of wiring devices are to be centrally located.

Boxes provide an easy method for the installation of electrical devices such as switches, receptacles, fans, lights and more in ceiling and wall applications.

A variety of time-saving mounting brackets are available that allow for easy positioning of the box along studs or joists.



Productivity solution spotlight



Easily mount without having to disassemble!

Extra duty while-in-use covers and kits

Durable covers offer a superior weatherproof solution against various elements such as rain, snow and ice. Plus, the patented corner ball joint hinge allows for vertical or horizontal mounting without disassembly, making installation even easier.



Easy installs, no tools required

Quick-Lok Pro™ connectors

Helps improve job site productivity when installing armored cable, metal-clad cable, MCI-A cable, MCPSC cable or flexible metallic conduit to a box or enclosure. No tools are needed for installation. Simply insert the cable or conduit into the connector and install into the 1/2" knockout.



Maximum capacity to support 6a cables!

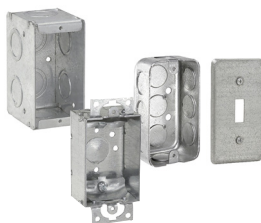
5-Inch steel square low voltage outlet boxes and covers

Designed to support the need for larger capacity cable and conduit terminations, the Crouse-Hinds series 5" box easily accommodate the 6a cables with the proper bend radius of at least 1 inch as per ANSI/TIA-568.0-D.

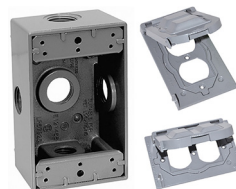
To view our complete Crouse-Hinds series outlet boxes and covers product line, visit Eaton.com/boxes-covers.



Steel square outlet boxes, covers, extension rings



Switch boxes, utility boxes and masonry boxes



Weatherproof boxes and while in-use covers



Cast device boxes



Fasteners solutions

Eaton manufacturers B-Line series fastener solutions for the electrical, mechanical and telecommunication applications, such as products designed for attachment to metal studs, steel beams, acoustical tees, purlins, channel and more.

Our fasteners are designed for fast, easy installation that helps save on installation time while reducing complexity and job-site waste.

Plus, we offer a full line of fastener accessories and hardware to complete the job.

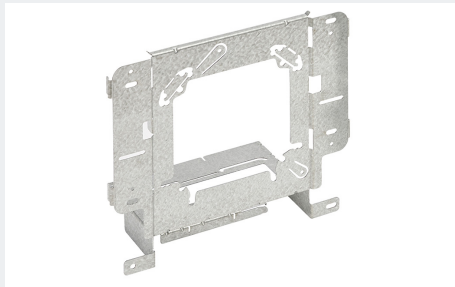
Productivity solution spotlight



Mount fans in as little as 30 seconds!

Redi-Mount™ fan hanger

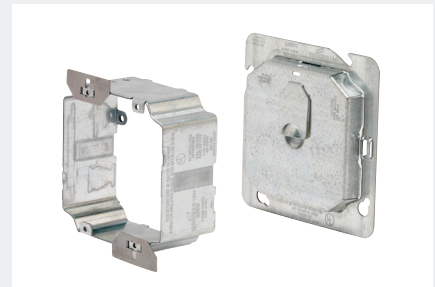
An octagon electrical box pre-assembled onto the t-bar fastener, and includes KwikWire cable and clamps for simple, fast installation. This solution helps reduce the number of parts to manage and install on the job-site, compressing your install time.



Save up to 15 seconds a cycle!

Box support stud mounting bracket

With a simple push, the new Hands-Free Stud Mounting Bracket holds itself onto the stud until secured with a screw. Marty Mouse ears to retain the box when plaster ring is removed. Rabbit Ears to attach a plaster ring for data devices without using a box.

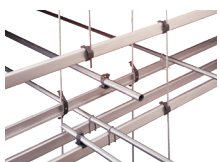


Installs in as little as 15 seconds!

Rapid Ring™ self-adjusting prefab ring

With simple push, the ring is flush every time. Self-adjusts to various wall depths and types of tile. Includes an easy off, quick release protective plate. Easy to route around raised surface on the protective plate. Available in 1 to 4 gang options.

To view our complete B-Line series fastener product line, visit Eaton.com/fasteners.



ATR and drop wire support fasteners



Acoustical tee and T-bar fasteners



Beam fasteners



Box support fasteners



Strut mounting brackets



Conduit and cable support fasteners



Cable management solutions

As a leader in the North American cable tray industry, Eaton's B-Line series NEMA cable tray is highly specified as the preferred cable management solution on new and retrofit projects.

Eaton has over 60+ years of B-Line series cable tray manufacturing, offering one of the widest offerings in the market today.

Eaton also provides engineering services for its B-Line series cable tray. Our tenured engineers are dedicated to driving specification while helping take the risk and guess work out of selecting the right product for your application.

From take-offs to optimizing your layout to providing options to maximize your profit, the B-Line series Engineering Services Group is available to support you pre-bid to order.

Productivity solution spotlight



Reduce bends and tears during cable pulling

J-Hooks

Preserve the integrity of your pathway and connections by using Eaton's extensive line of j-hook fasteners. Designed to help reduce cable bends, tears and kinks when loading or pulling cables 5, 5e, 6 and 6a fiber optic, inner-duct and low voltage wires.



Fewer parts to install and manage

KwikRail™ cable tray

Rated for NEMA 12A and 12B load classes, the system features a splice retention groove I-beam side rail to easily guide and snap the splice plate into position, and secures with just two bolts.

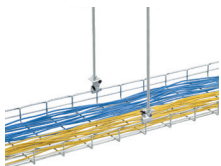


Reduce waste and slash your hanging time

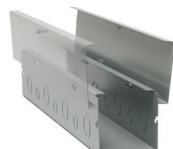
KwikWire™ hanging system

An ideal alternative to jack chain or all threaded rod that quickly installs around beams with no drilling required. Simple height adjustments can be made by releasing the clamp locking tab, with no tools required. Spools of wire can be cut to length in field, helping reduce waste and up-front planning, and electrical grounding.

To view our complete B-Line series cable management product line, visit Eaton.com/cabletray.



Flextray wire basket tray



Wiring and wiring trough systems



CGB cable glands



Imperial cable tray



Seismic bracing solutions

TOLCO™ seismic bracing products lead the industry with patented, innovative solutions. Many products feature innovative features that help save on installation time. One example is the break-off bolt heads which provide visual verification of proper torque and installation to the structure and attachment to the seismic brace component.

UL 203A Updates: Safety Sway Brace Devices for Sprinkler System Piping

While other manufacturers may have chosen to forego product changes and reduce their published catalog loads, Eaton has redesigned and introduced new products to the [TOLCO bracing systems for sprinkler systems](#). The TOLCO solutions meet the new UL203A standards for safety factor and load rating as required by NFPA 13. To learn more about the new standards and TOLCO products, please visit our website on [seismic bracing safety standards](#).

Trust your seismic engineering needs to the TOLCO seismic experts

Codes and requirements differ by location and project. Our seismic experts understand the codes and can help you reduce risk and meet your project requirements.

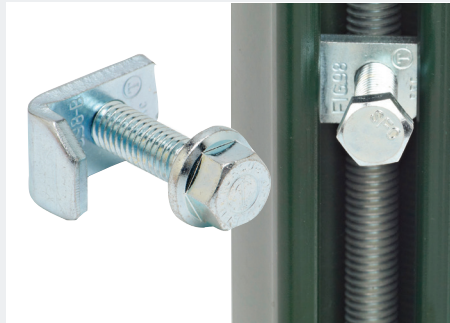
Productivity solution spotlight



Up to 50% faster installs

Seismic cable kit

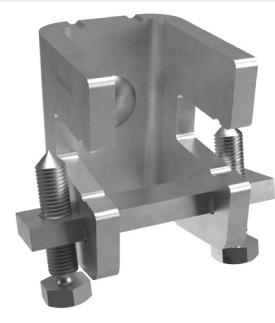
The B-Line series seismic bracing cable kit system is up to 50% faster to install over traditional cable bracing methods. Tested by an independent lab, the seismic cable kits are designed to brace non-structural equipment and distribution systems to help minimize damage in a seismic event.



Visual verification of proper installation

Rod stiffeners

Secure strut channel to vertical hangers with rod stiffeners to help prevent buckling during a seismic event. Eaton TOLCO rod stiffeners feature a break-off bolt head, which helps reduce inspection time by allowing a visual verification of the proper torque and installation.



No drilling or welding required

Fig. 828 universal sway brace attachment

Designed to attach sway bracing and hanger assemblies to structural members using a secure non-friction connection without drilling or welding. Secures brace to structure either across or along the beam. Break-off head set screw helps ensure verification of proper installation torque.

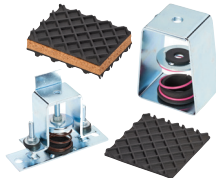
To view our complete TOLCO and B-Line series seismic bracing offering, visit [Eaton.com/seismicbracing](https://www.eaton.com/seismicbracing).



CPVC solution



Branch line restraint



Vibration isolation solutions



Structural attachments



Seismic anchors



Cable bracing system attachment



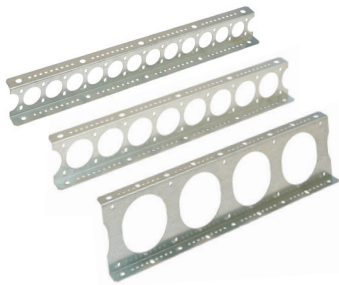
Support systems

Eaton's B-Line series support systems effectively support, protect, and connect engineered facility subsystems, while providing a lower total installed cost.

Eaton is proud to be one of the few support system manufactures to boast a robust offering of domestically made product to satisfy a vast array of domestic manufacturing requirements.

B-Line series support systems offer customers solutions for electrical, mechanical, plumbing, heating and air conditioning and refrigeration applications in new and retrofit buildings.

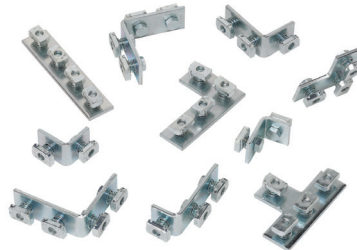
Productivity solution spotlight



Installs up to 50% faster than traditional strut trapeze

Conduit trapeze support

Features versatile z-shaped design that allows for quicker installation and support of multiple sizes of conduit, MC/AC cable, cable tray and other accessories, such as electrical boxes. The conduit holes automatically align conduits across the trapeze.



Up to 75% faster to install than typical strut fittings

Pre-assembled fittings

Eaton has taken commonly used strut fittings and adapted them with the proper hardware. The result is pre-assembled strut fittings that are faster and easier to install than traditional strut fittings. Minimizes material handling, increases construction assembly efficiency and delivers a quality solution that results in an overall positive return on the investment.



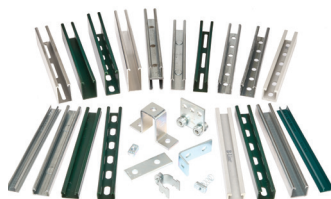
Up to 50% faster to install Buzznut™ strut hardware

This lock nut washer just slips onto an all threaded rod at any point along the length of the rod, and with a quick turn of the nut – locks into place. Ideal solution to help save time on strut and all threaded rod and trapeze installations.

To view our complete B-Line series support system solutions, visit Eaton.com/supportsystems.



Pipe hangers and mechanical supports



Strut system solution



Dura-Blok rooftop supports



Safety grating



Electrical fittings, conduit bodies and cable glands

Eaton's Crouse-Hinds series fittings provide long-lasting service in commercial, industrial and residential construction. Outstanding quality, breadth of offering, and innovative products deliver real value.

Crouse-Hinds series fittings, hubs, conduits and cable glands provides dependable performance and labor savings for a lower total installed cost.

- AC/MC fittings
- Breather and drains
- Commercial hubs
- Conduit seals
- Liquidtight solutions
- Portable cord connectors
- Rigid-IMC fittings
- Service entrances and grounding

Productivity solution spotlight



Fast and easy installation with no disassembly required

LiQuik™ liquidtight fittings

Simply loosen the black nut, insert your liquidtight conduit and tighten down for a secure connection. Two dimples on the ferrule insert into the body and "lock" so the ferrule will not spin during the two-step "twist on" application, saving both time and money.



Rugged protection for cords and cables

CGB series bodies glands

Rugged, durable construction protects cords and cables from damage and compact design permits close grouping of several cords and/ or cables. Wire mesh grips available for added strain relief. Standard neoprene bushing weatherproof seal on outer sheath of cable.



Helps ensure flush installation and positive grounding

Myers™ hubs

Available in a wide range of styles, sizes and materials, the Myers hubs are easy to install. Features strong, oversize nut with radial serrations for vibration resistance and to help ensure flush installation and positive grounding.



Versatile, fast and easy to install

TMC3 cable gland

Two-piece design with lock nut and gasket speeds installation. Dual certified for armored (M/TECK) and non-armored tray cables offers versatility of use.

To view our complete line of Crouse-Hinds series electrical fittings, conduit bodies and glands offering, visit Eaton.com/fittings.



Rigid IMC fittings



AC/MC fittings and connectors



Hubs



EMT fittings



Form 5 malleable iron conduit bodies, covers and gaskets



CG color coded cord grips



Enclosures and meter mounting solutions

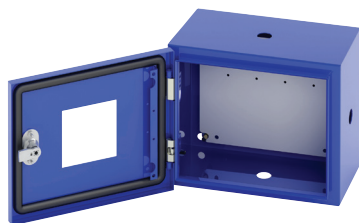
Eaton offers B-Line series NEMA Type 1, 3/3R and 12/13 environmental enclosures, wireway and wiring trough solutions for commercial construction.

- Junction boxes
- Panel enclosures
- Utility boxes
- Wireway
- Wiring troughs

Eaton offers B-Line series meter mounting equipment solutions for local utility specifications.

- Commercial meter pedestal
- Group meter breakers
- Single meter breakers

Productivity solution spotlight



Shorter lead-times compared with custom options

Modified enclosures

Eaton offers enclosure modification services that allow for “custom” design without the custom lead-times. Simply select your B-Line series enclosure and the special features to configure your modified enclosure.

To learn more, visit [Eaton.com/modified](https://www.eaton.com/modified).



Up to 20% faster installs!

Quick-Connect™ wireway

Available in straights and multiple fittings to create bends, turns and to terminate ends. Features mounting holes on the back; available with or without knockouts. Connectors feature a gate that swings completely open for lay-in of cable and wire.



Easy to install, ringless design

Single position, lever bypass meter sockets

Ringless design style houses utilities' electrical watt-hour meters in both residential and commercial buildings to accommodate from 100 amps to 320 amps. The non-jaw clamping lever bypass, and lever bypass (in both 200 amp continuous and 320 amp continuous capabilities) have overhead or underground feed applications.

To view our complete line of enclosures, visit [Eaton.com/enclosures](https://www.eaton.com/enclosures). To view the complete line of metering items, visit [Eaton.com/metering](https://www.eaton.com/metering).



Group meter sockets



Type 1 and 3/3R utility enclosures



Single meter sockets



Type 1 and 3/3R panel enclosures



Meter breakers



Type 1 and 3/3R junction enclosures

**U.S. (global headquarters):
Eaton's Crouse-Hinds business**

1201 Wolf Street
Syracuse, NY 13208

(866) 764-5454
FAX: (315) 477-5179
FAX Orders Only:
(866) 653-0640

crousecustomerctr@eaton.com

Eaton's B-Line business

509 West Monroe Street
Highland, IL 62249

800-851-7415
FAX: 618-654-1917
Eaton.com/b-lineseries

IEC Electrical
(CEAG products)

49 (0) 6271 806-500
FAX: 49 (0) 6271 806-476

Info-ex@eaton.com

Airport Lighting

866-764-5454

CrouseCustomerCTR@Eaton.com

Mexico/Latin America/Caribbean

52-555-804-4000
FAX: 52-555-804-4020

ventascentromex@eaton.com

Haz Area Communications
(MEDC, Hernis, Oxalis, FHF Sonix)

44 (0) 1623 444400
FAX: 44 (0) 1623 444531

MEDCadmin@Eaton.com

Canada

Toll Free: 800-265-0502
FAX: (800) 263-9504
FAX Orders only: (866) 653-0645

China

86-21-2899-3600
FAX: 86-21-2899-4055

cchsales@cooperindustries.com

Process instrumentation
(MTL products)

44 (0) 1582 723633
FAX: 44 (0) 1582 422283

enquiry@mtl-inst.com

Eaton Middle East

9714-8066100
FAX: 9714-8894813

CHBL-ME@eaton.com

Australia

61-2-8787-2777
FAX: 61-2-9609-2342

CEASales@cooperindustries.com

For more information:

If further assistance is required, please contact an authorized Eaton Distributor, Sales Office, or Customer Service Department.

Eaton
1000 Eaton Boulevard
Cleveland, OH 44122
United States
Eaton.com

© 2023 Eaton
All Rights Reserved
Printed in USA
Publication No. BR311011EN
July 2023

Eaton is a registered trademark.

All other trademarks are property of their respective owners.

Follow us on social media to get the latest product and support information.



Powering Business Worldwide