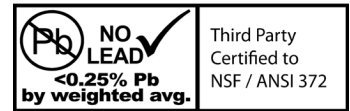


PS02 SERIES SMALL WATER PUMP SWITCHES

APPLICATION:

- Standard water pump switch designed for the control of electrically driven water pumps of all types (Jet, Submersible, Reciprocating, etc.)

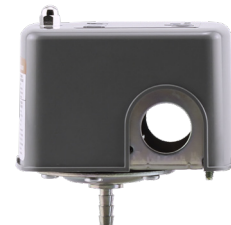


SPECIFICATION:

- Standard Action - Contacts Open on Rising Pressure
- Enclosure - Type 1 Indoor Use
- Ambient Temperature: -22°F to 158°F (-30°C to 70°C)
- Media Temperature: -22°F to 257°F (-30°C to 125°C)

CERTIFICATION:

- UL Approved
- CSA Approved



Part No.	Pressure Setting	Connection
	PSI	
Standard Duty		
PS02-2040	20 - 40	1/4" FPT
PS02-3050	30 - 50	1/4" FPT
PS02-4060	40 - 60	1/4" FPT
PS02B-3050	30 - 50	1/4" Barb
PS02M-3050	30 - 50	1/4" MPT
PS02M-4060	40 - 60	1/4" MPT
Auto/Manual Off		
PS02AO-3050	30 - 50	1/4" FPT
PS02AO-4060	40 - 60	1/4" FPT
Low Level Cut Off Switch		
PS02LP-2040	20 - 40	1/4" FPT
PS02LP-3050	30 - 50	1/4" FPT
PS02LP-4060	40 - 60	1/4" FPT
Switch with Pulsation Plug		
PS02P-3050	30 - 50	1/4" FPT
PS02P-4060	40 - 60	1/4" FPT

PRESSURE RANGE/ RATING (PSI)				SINGLE PHASE HORSEPOWER (HP)	
Cut-In	Differential	Cut-Out	Max Allowable	115V	230V
5-45	15-30	20-65	220	1.5	2

BOSHART
INDUSTRIES

25 Whaley Avenue, PO Box 310, Milverton, ON CANADA N0K 1M0
Tel: 800-561-3164

boshart.com ♦ **blog.boshart.com**