



## S19-2000, S19-2000EFX Emergency Fixture Thermostatic Mixing Valves

- Exceeds ANSI Z358.1
- ASSE 1071 Certified
- Reliable Liquid-Filled Thermostat with 10-Year Warranty
- Checkstops on Inlets
- Adjustable Set Point within Temperature Range
- Accurate Temperature Control to within  $\pm 3^{\circ}$  F
- Built-in Cold Water Bypass, Assuring Cold Flow
- Positive Shutoff of Hot Supply When Cold Supply is Lost
- Easy Installation and Serviceability
- Dirt and Lime Resistant
- Dial Thermometer
- Factory Assembled and Tested
- Universal Mounting Capability
- Cabinet Features:
  - 18 Gauge Body & Door
  - Left-Hand Hinge
  - Cylinder Lock
  - Inlet/Outlet Knock-Out Holes for Mounting Flexibility
  - Stainless Steel or Baked White Enamel Finishes
  - Surface-Mounted or Recessed Style with Flange

### Valve Specifications

#### Maximum Operating Pressure

125 PSI (860 kPa)

#### Maximum Inlet Temperature

180° F (82° C)

#### Recommended Inlet Temperature

120° F (49° C) – 140° F (60° C)

#### Temperature Range

Std. 65° F (18° C) to 90° F (32° C)

#### Set Point

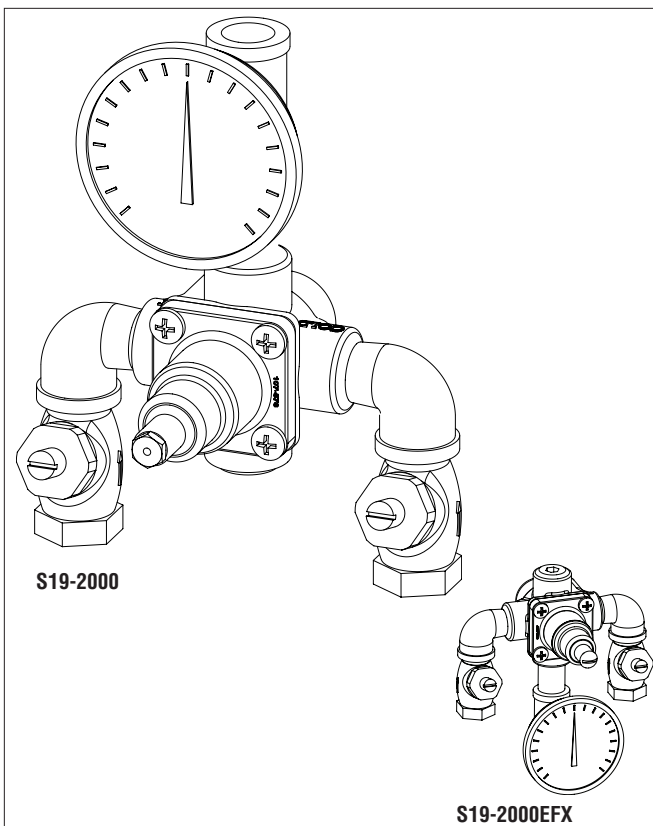
85° F (29° C)

#### Flow Capacities – GPM (L/Min)

Model	Min. Flow	Pressure Drop – PSI (Bar)						
		5 (.5)	10 (1.0)	15 (1.5)	20 (2.0)	30 (2.5)	45 (3.0)	60 (4.0)
S19-2000	1.5 (5.5)	3.0 (13.5)	4.0 (19.0)	5.0 (23.5)	6.0 (27.0)	7.3 (30.5)	9.0 (33.5)	10.5 (38.5)
Cold Bypass Only		2.3 (10.5)	3.2 (14.5)	4.0 (18.0)	4.6 (21.0)	5.6 (23.5)	6.8 (25.5)	7.7 (29.5)



*This plumbing fixture is not intended to dispense water for human consumption through drinking or for preparation of food or beverages.*



### Optional Selections

#### Finish

☐ C Chrome Plated

#### Bracket

☐ B Wall Mounting Bracket

#### Cabinets

- ☐ SS Surface Mount Stainless Steel
- ☐ RS Recessed Stainless Steel
- ☐ SE Surface Mount White Enamel
- ☐ RE Recessed White Enamel
- ☐ W Plexi-glass Window in Door

### Code Compliance and Certifications

ASSE 1071 & UPC certified.



Engineer's Approval \_\_\_\_\_

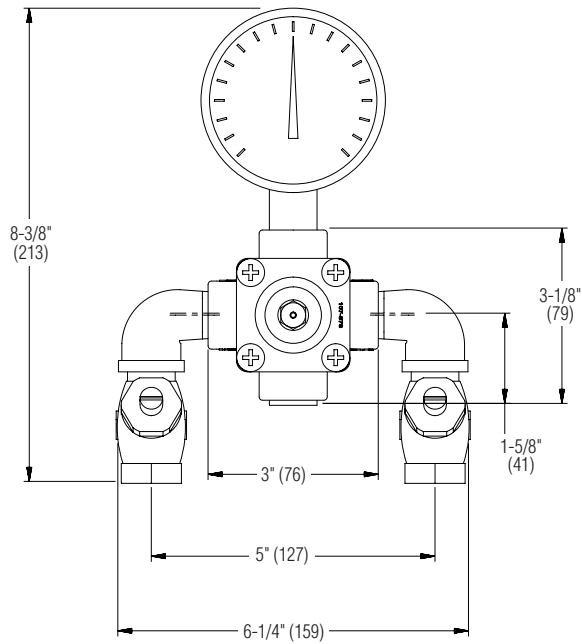


# S19-2000, S19-2000EFX Emergency Fixture Thermostatic Mixing Valves

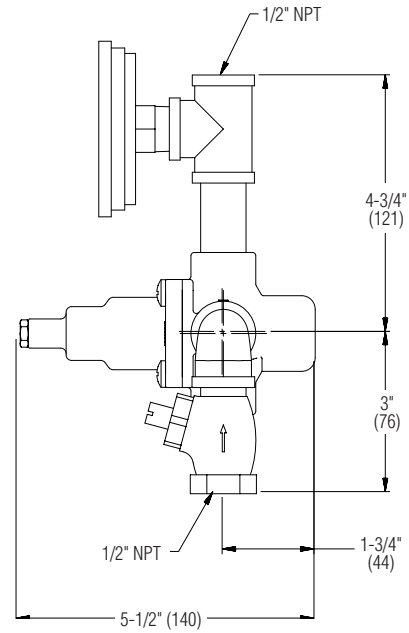
## Dimensions

(mm)

Front View

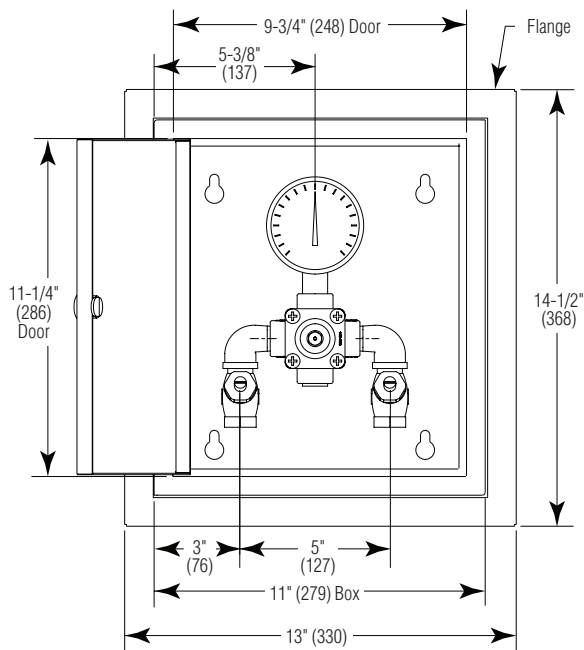


Side View

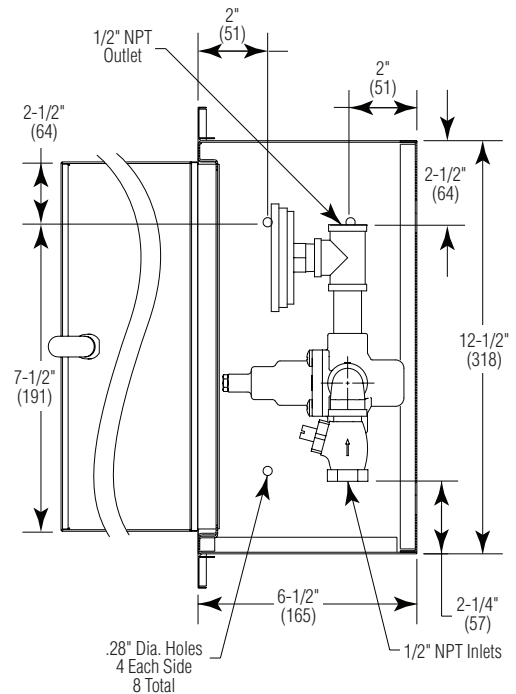


## Dimensions — S19-2000 Recessed Cabinet

Front View



Side View

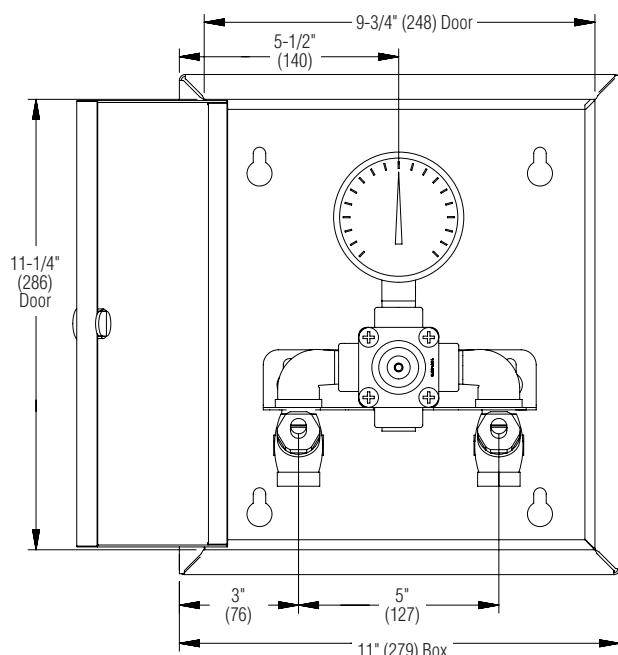


## S19-2000, S19-2000EFX Emergency Fixture Thermostatic Mixing Valves

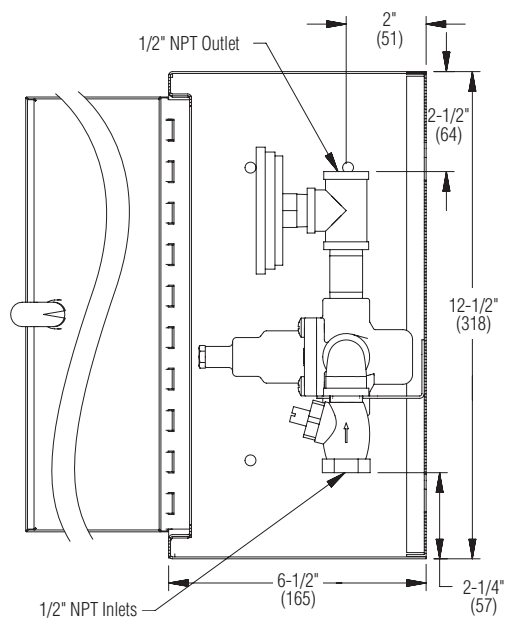
### Dimensions — S19-2000 Surface-Mounted Cabinet

(mm)

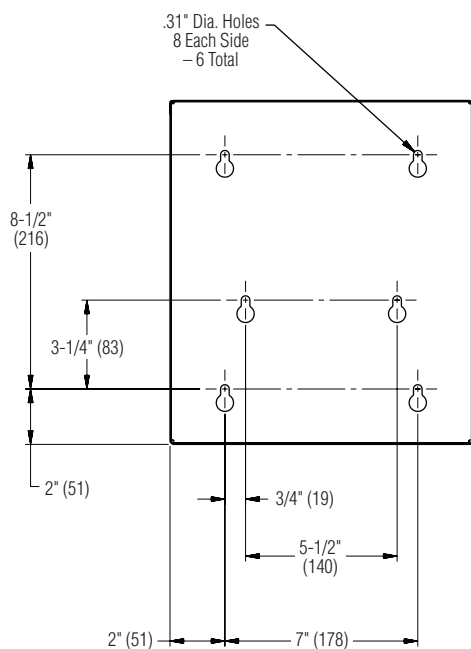
### Front View



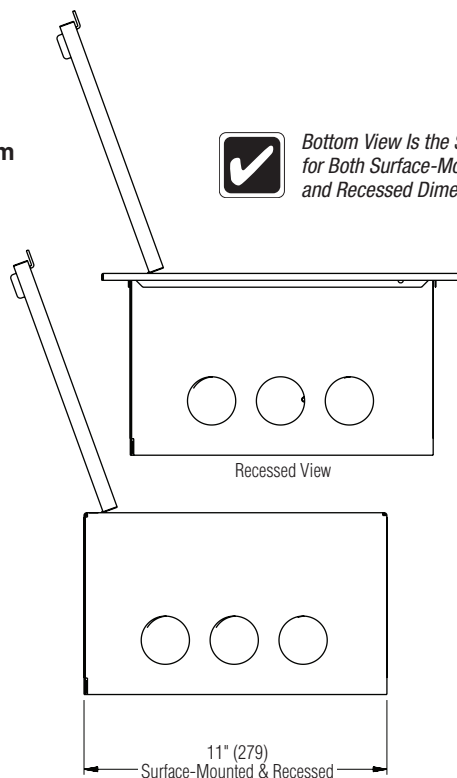
### Side View



**Back View**



### Bottom View



*Bottom View Is the Same  
for Both Surface-Mounted  
and Recessed Dimensions.*