



## S19-2150 Emergency Fixture Thermostatic Mixing Valve

- Exceeds ANSI Z358.1
- ASSE 1071 Certified
- Reliable Liquid-Filled Thermostat with 10-Year Warranty
- Integral Strainer Checkstops on Inlets
- Adjustable Set Point within Temperature Range
- Accurate Temperature Control to within  $\pm 3^{\circ}$  F
- Built-in Cold Water Bypass, Assuring Cold Flow
- Positive Shutoff of Hot Supply When Cold Supply is Lost
- Easy Installation and Serviceability
- Dirt and Lime Resistant
- Dial Thermometer
- Factory Assembled and Tested
- Universal Mounting Capability
- Cabinet Features:
  - 18 Gauge Body & Door
  - Left-Hand Hinge
  - Cylinder Lock
  - Inlet/Outlet Knock-Out Holes for Mounting Flexibility
  - Stainless Steel or Baked White Enamel Finishes
  - Surface-Mounted or Recessed Style

### Valve Specifications

#### Maximum Operating Pressure

125 PSI (860 kPa)

#### Maximum Inlet Temperature

180° F (82° C)

#### Recommended Inlet Temperature

120° F (49° C) – 140° F (60° C)

#### Temperature Range

Std. 65° F (18° C) to 90° F (32° C)

#### Set Point

85° F (29° C)

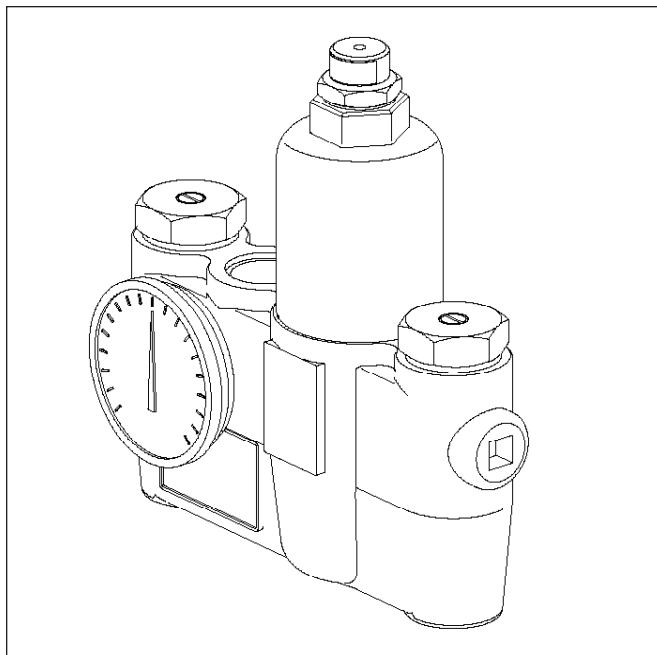
#### Flow Capacities – GPM (L/Min)

Model	Min. Flow	Pressure Drop – PSI (Bar)						
		5 (.5)	10 (1.0)	15 (1.5)	20 (2.0)	30 (2.5)	45 (3.0)	60 (4.0)
S19-2150	3.0 (11.5)	6.0 (29.0)	9.5 (46.0)	12.5 (60.0)	15.0 (72.0)	19.5 (83.5)	25.5 (96.5)	30.5 (113.5)

Minimum cold water bypass at 30 PSID: 8.0 GPM



*This plumbing fixture is not intended to dispense water for human consumption through drinking or for preparation of food or beverages.*



### Models (Must select one)

Model	Description
<input type="checkbox"/> S19-2150	EFX20-Thermostatic Mixing Valve

### Optional Selections

#### Finish

- ☐ C Chrome Plated

#### Bracket

- ☐ B Wall Mounting Bracket

#### Piped Assembly

- ☐ P Piped Assembly with Inlet and Outlet Shutoff  
☐ N Piped Assembly only

#### Cabinets

- ☐ SS Surface Mount Stainless Steel  
☐ RS Recessed Stainless Steel  
☐ SE Surface Mount White Enamel  
☐ RE Recessed White Enamel  
☐ W Plexi-glass Window in Door

### Code Compliance and Certifications

ASSE 1071 & UPC certified.



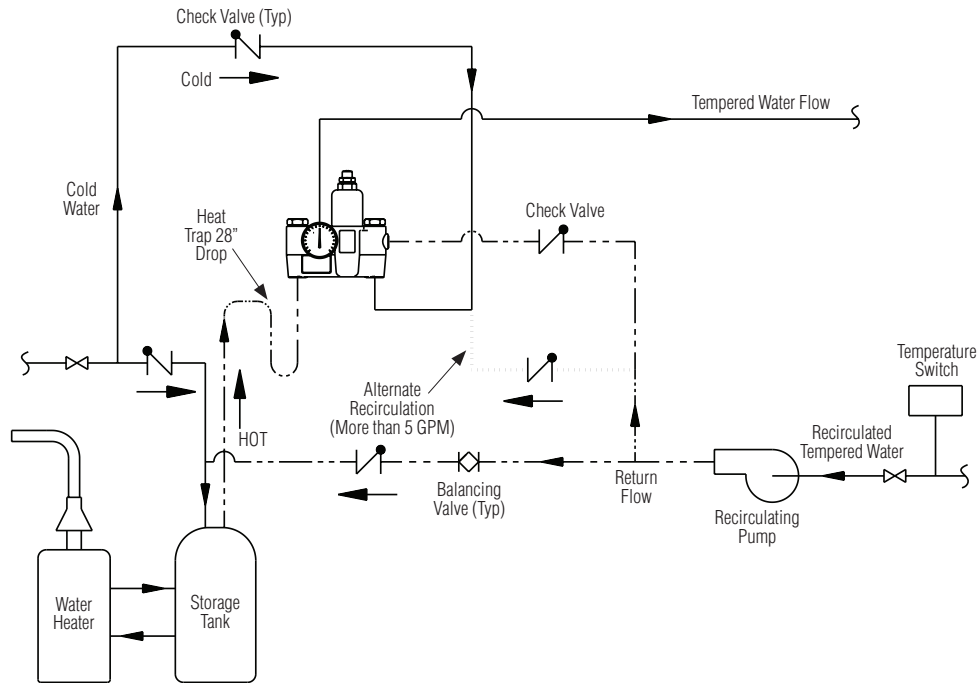
Engineer's Approval \_\_\_\_\_



# S19-2150 Emergency Fixture Thermostatic Mixing Valve

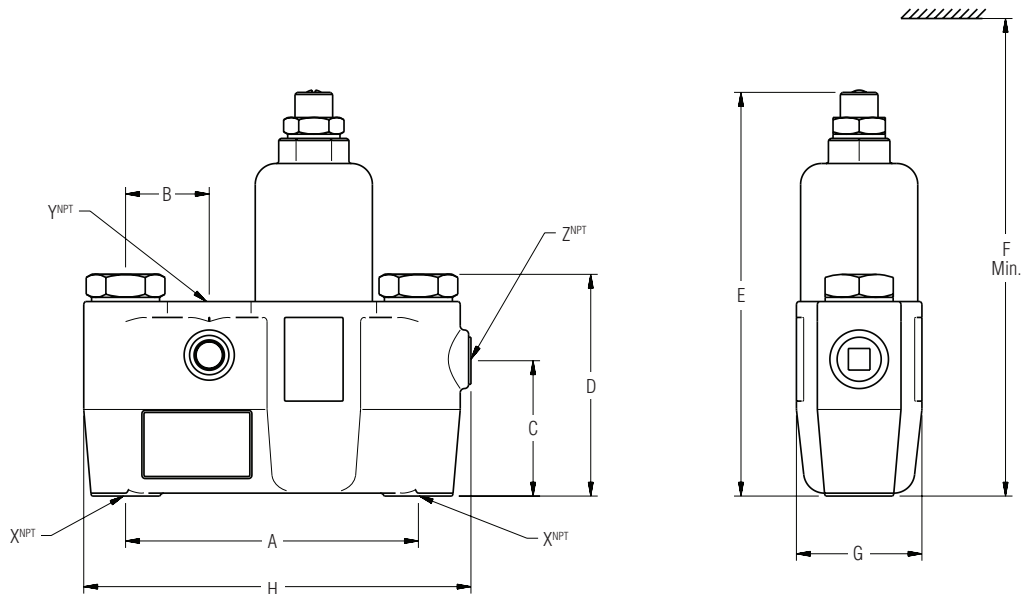
## Recirculation Diagram

(mm)



## Dimensions

Model	A	B	C	D	E	F	G	H	X <sup>NPT</sup>	Y <sup>NPT</sup>	Z <sup>NPT</sup>
S19-2150	7" (178)	2" (51)	3-1/4" (84)	4-3/4" (119)	8" (203)	14" (356)	3-1/8" (79)	9-1/4" (234)	3/4"	1"	3/4"





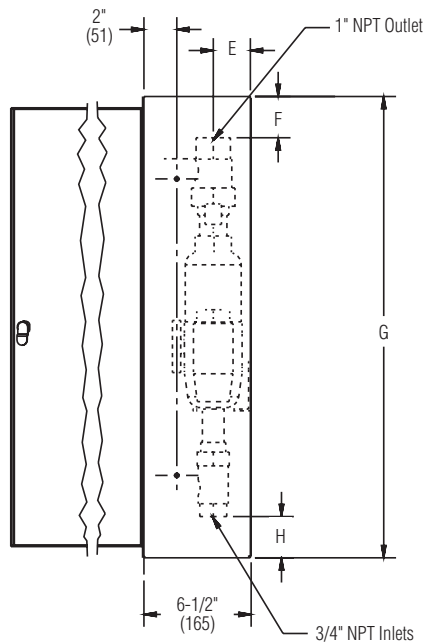
# S19-2150 Emergency Fixture Thermostatic Mixing Valve

## Dimensions — Surface-Mounted Cabinet

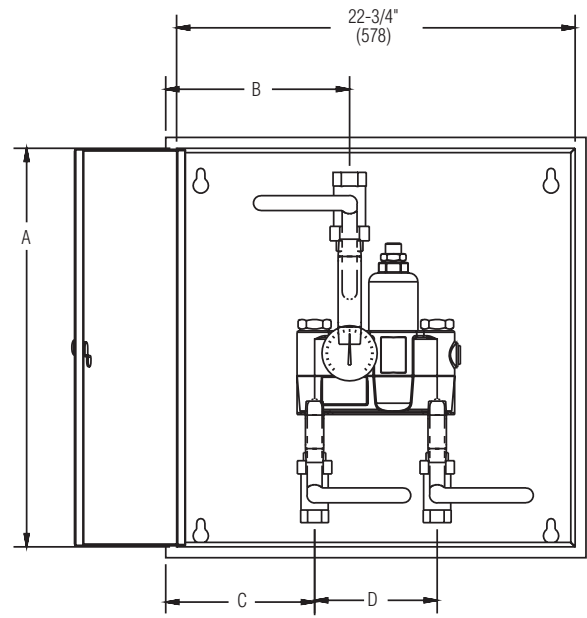
(mm)

Model	A	B	C	D	E	F	G	H	I	J	K	L
S19-2150	22-3/4" (578)	10-1/2" (267)	8-1/2" (216)	7" (178)	2" (51)	2" (51)	24" (610)	2" (51)	6-1/4" (159)	7-1/2" (191)	20" (508)	8-7/16" (214)

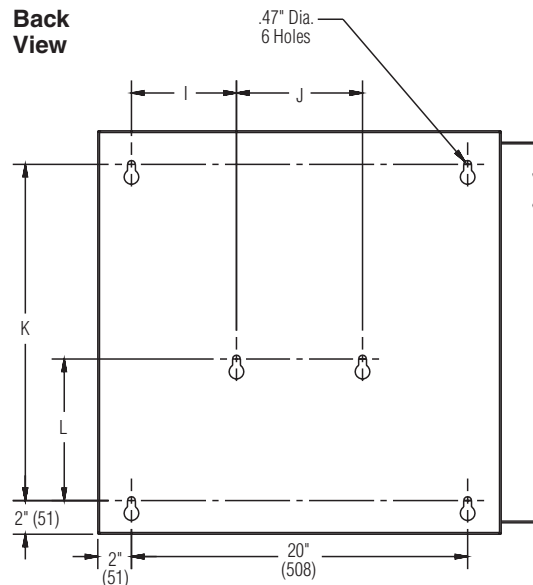
**Side View**



**Front View**



**Back View**





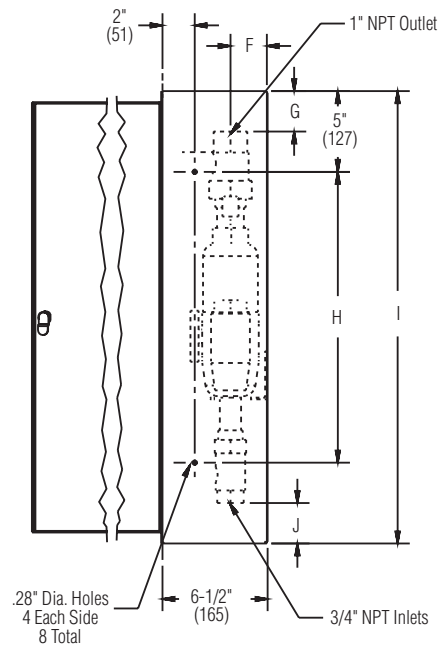
# S19-2150 Emergency Fixture Thermostatic Mixing Valve

## Dimensions — Recessed Cabinet

(mm)

Model	A	B	C	D	E	F	G	H	I	J
S19-2150	26" (660)	22-3/4" (578)	10-1/2" (267)	8-1/2" (216)	7" (178)	2" (51)	2" (51)	14" (356)	24" (610)	2" (51)

**Side View**



**Front View**

