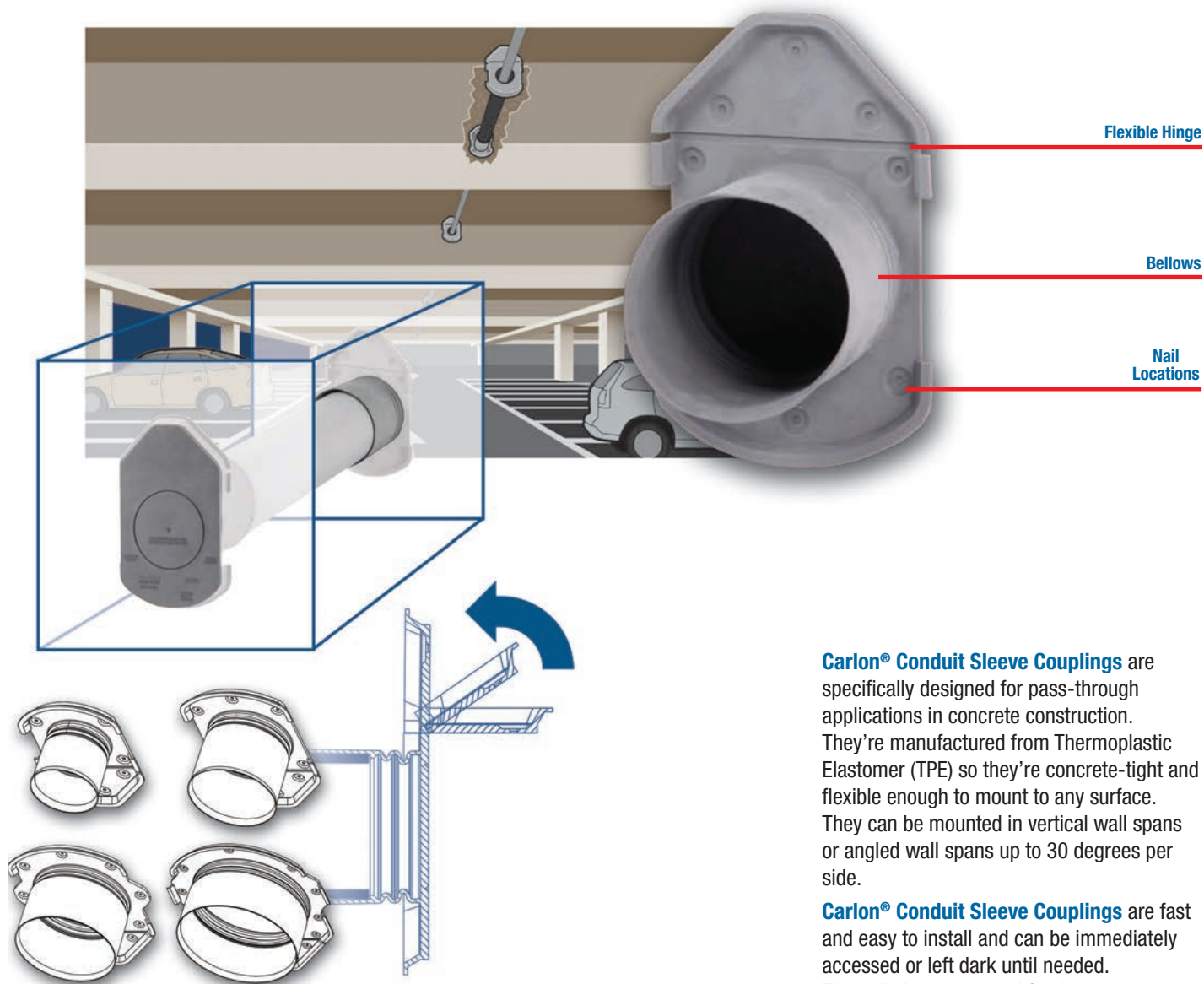


Conduit Sleeve Couplings

Pass-through for concrete walls, columns and posts



Carlon® Conduit Sleeve Couplings are specifically designed for pass-through applications in concrete construction. They're manufactured from Thermoplastic Elastomer (TPE) so they're concrete-tight and flexible enough to mount to any surface. They can be mounted in vertical wall spans or angled wall spans up to 30 degrees per side.

Carlon® Conduit Sleeve Couplings are fast and easy to install and can be immediately accessed or left dark until needed. They eliminate the need for duct tape, clamps and special mounting means while providing superior aesthetics by blending into the concrete.

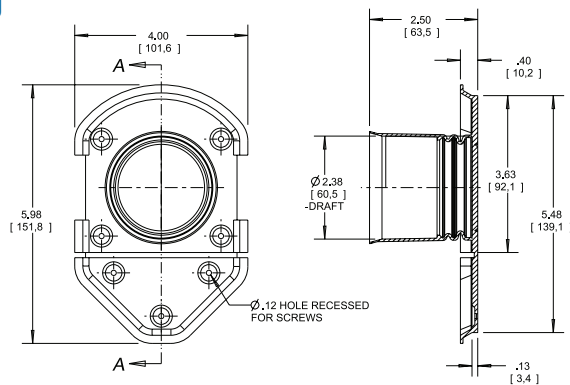
Applications – Concrete walls, columns and posts.

Conduit Sleeve Couplings

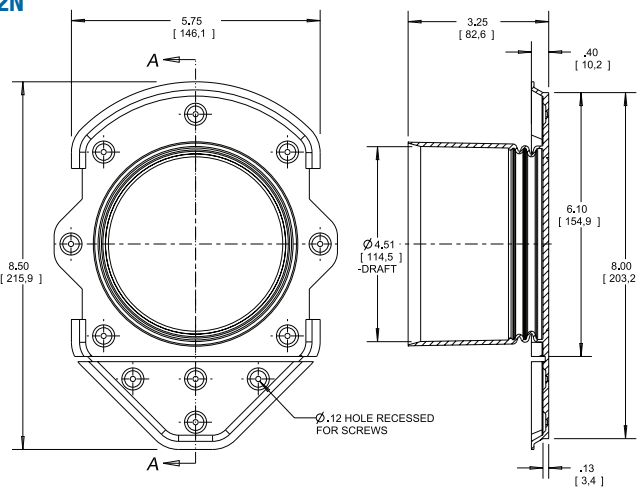
Features

- EXCLUSIVE
- Manufactured from TPE, concrete-tight
- Flexible hinge provides alignment of pass-through with ceiling
- Bellows – mounts to vertical walls and angled walls up to 30°
- Quick and easy installation
- Eliminates the use of duct tape and clamps

E992J

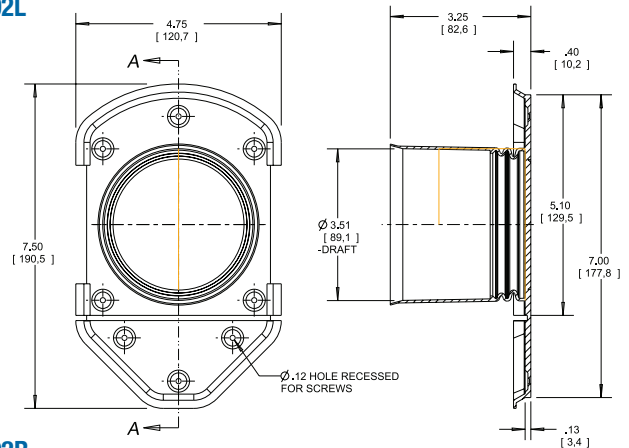


E992N

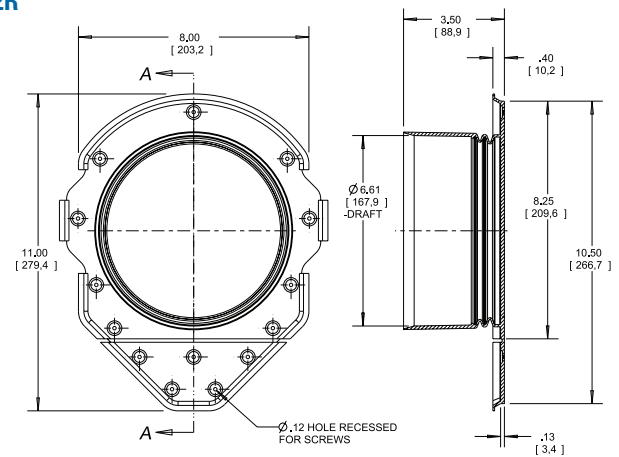


- Manufactured to IPS dimensions for use with most conduit types
- Superior aesthetics (blends in to the concrete)
- Trade sizes: 2 in., 3 in., 4 in. and 6 in.
- Future-proofs the structure. Pass-through remains dark and protected until needed
- Note: Firestop (where needed) and conduit NOT INCLUDED

E992L



E992R



Specifications

Cat. No.	Size (in.)	Std. Ctn. Qty.	Std. Ctn. Wt. (lb.)
E992J	2	84	13.0
E992L	3	30	8.3
E992N	4	22	8.6
E992R	6	18	13.0