



OPERATION:

COMPLIES WITH:

- ASME A112.18.1/CSA B125.1
- (Contact a Delta faucet representative for province, state and/or local approvals)
- For commercial use only
- Verified compliant with 0.25% weighted average Pb content regulations

WARRANTY:

- 5 year limited warranty on parts (other than batteries) and finishes of this Delta® commercial product from the date of purchase. No warranty is provided on batteries.
- Please see the warranty for all terms, conditions and limitations. Copies of the warranty are available from DeltaCommercialFaucets.com.

54T5422A

Mixing Surgeon Scrub-Up Valve And Spout

Floor Mount Double Pedal Valve, Self-Close

FEATURES:

- Forged brass, self-close foot pedal valve
- Heavy duty rigid/swivel gooseneck spout
- Indexed pedals
- Designed for routine 180°F (82°C) disinfection cycles up to 30 mins
-

SPECIFICATION:

- Mixing surgeon scrub-up valve and spout
- Floor mount double pedal valve, self-close
- Brass chrome plated indexed pedals
- No stops
- Polished chrome-plated finish
- Vandal resistant laminar w/Agion® Antimicrobial, 1.5 gpm (5.7Lpm)
- Forged brass body



Delta reserves the right (1) to make changes to specifications and materials, and (2) to change or discontinue models, both without notice or obligation. Dimensions are for reference. Measurement may vary plus or minus 6mm(0.25"). Mounting locations are suggested only. Check with local codes for requirements in your area.

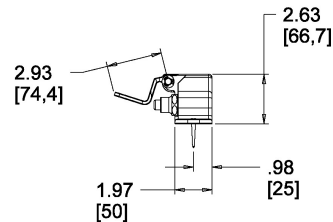
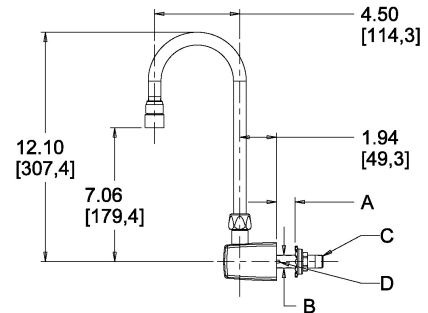
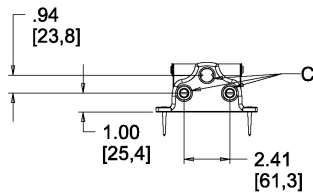
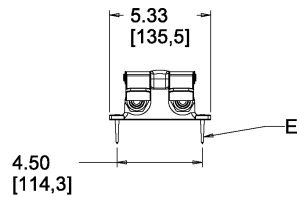
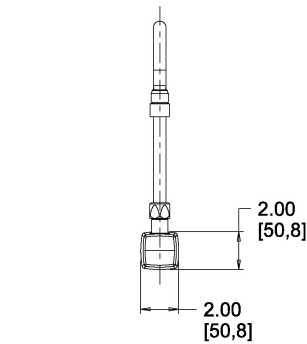
DELTA FAUCET COMPANY 55 East 111th St. Indianapolis, IN, USA 46280 - 317.848.1812
 MASCO CANADA LIMITED 350 South Edgeware Rd, St. Thomas, ON, Canada N5P 4L1 - 905.712.3030

54T5422A

REQUIRED ACCESSORIES:

OPTIONAL ACCESSORIES:

- [Careguard® Outlets](#)
- [Flow Control Gooseneck Spout Installation](#)
- [Rigid/Swivel Optional Spouts](#)
- [Rigid/Swivel Optional Spouts French](#)



Dimension Units: INCH[MM]

- A = Max deck/wall thickness: 1.35" (34mm)
 B = Holes required/min 1 hole - .75" (19mm)
 C = 1/2" FIP inlets & outlets for valve, 3/8" NPT male for spout
 D = Locking pins - 1.5" (38mm) centers, 0.25" (6mm) dia.
 E = No 12 woodscrews 1-1/2" long

Notes:

It is recommended that each supply line be equipped with a water hammer arrestor installed per manufacturer's instructions

HELPFUL LINKS:

DELTA FAUCET COMPANY 55 East 111th St. Indianapolis, IN, USA 46280 - 317.848.1812
 MASCO CANADA LIMITED 350 South Edgeware Rd. St. Thomas, ON, Canada N5P 4L1 - 905.712.3030