

Electronic Exposed TECK® II Flush Valve Retrofit Kits (with H2Optic®)



NOTE: For Hardwire versions, order battery operated model with hardwire kit and transformer.

Record model number:

81T **BTRKA** -

Valve Type
WC = Water Closet
UR = Urinal

Alternate Flush Volumes
(leave blank if not applicable)
6 = 6 litre (1.6 gal) **fixed** flush (WC only)
13 = 13 litre (3.4 gal) **fixed** flush (WC only)
48 = 4.8 litre (1.27 gal) **fixed** flush (WC only)
38 = 3.8 litre (1.0 gal) **fixed** flush (Urinal only)
19 = 1.9 litre (0.5 gal) **fixed** flush (Urinal only)
05 = 0.5 litre (0.13 gal) **fixed** flush (Urinal only)

Item #	Part #	Description
1	061063A	Replaceable Lens for 3rd Generation E-FV
2	061138A	Cover Screws for 3rd Generation E-FV
3	061139A	Metal Cover
4	see #6	Electronic Button Head Assembly
5	060334A	Battery Holder
6a	061363A	Water Closet Board and Electronic Override Button
6b	061364A	Urinal Board and Electronic Override Button
7a	061024A	Regulating Screw & O-Ring
7b	061169A	Cast Cap/Solenoid & Regulating Screw Assembly
8a	061141A *	Cover Gasket (3/pkg)
8b	060078A *	Screws for Cast Cap (4/pkg)
9a	060507A**	Poppet Pin Pack (3/pkg) (also see 10b) - see Table 1 below
9b	062025A**	Washer (3/pkg) (required for 6.0L & 4.8L Valves only) - see Table 1 below
9c	060508A**	Poppet Pin Pack (3/pkg) (0.5L Valves only) - see Table 1 below
10a	061323A**	Diaphragm/Guide Assembly for WC - see Table 1 below
10b	061324A**	Diaphragm/Guide Assembly for Urinals - see Table 1 below
	060079A-MMO	Diaphragm Package
11	062007A**	Brass Seat with O-ring
12	060342A	Plug and O-Ring for Handle End
13	061142A	Electronic Water Closet Repair Kit for 3rd Generation E-FV
	061143A	Electronic Urinal Repair Kit for 3rd Generation E-FV
14	061144A	Electronic Water Closet Repair Kit for DF 3rd Gen EF-V
15	061069A	Hardwire Converter & Rigid Connection Assy for 3rd Gen E-FV
16	060344A *	Filter Screen Kit (12/pkg)
17	060341A	Wrench for Brass Renewable Seat (ordered separately)
	060704A	Transformer (110 to 24 VAC) for 5 Sensor Modules***
	060771A	Transformer (110 to 24 VAC) for 10 Sensor Modules***

* Package Quantities May Change. Check the parts section of the latest Delta Commercial Faucet Price List for current quantities.

** For valves manufactured before January 2013, you must replace both 061323A / 061324A diaphragm assembly and 062007A brass seat with O-ring. See Table below to determine appropriate poppet pin & diaphragm repair parts based on the flush volume required.

***Each individual sensor module requires its own 24 VAC to 6 VDC hardwire converter.

For valves manufactured after January 2013.

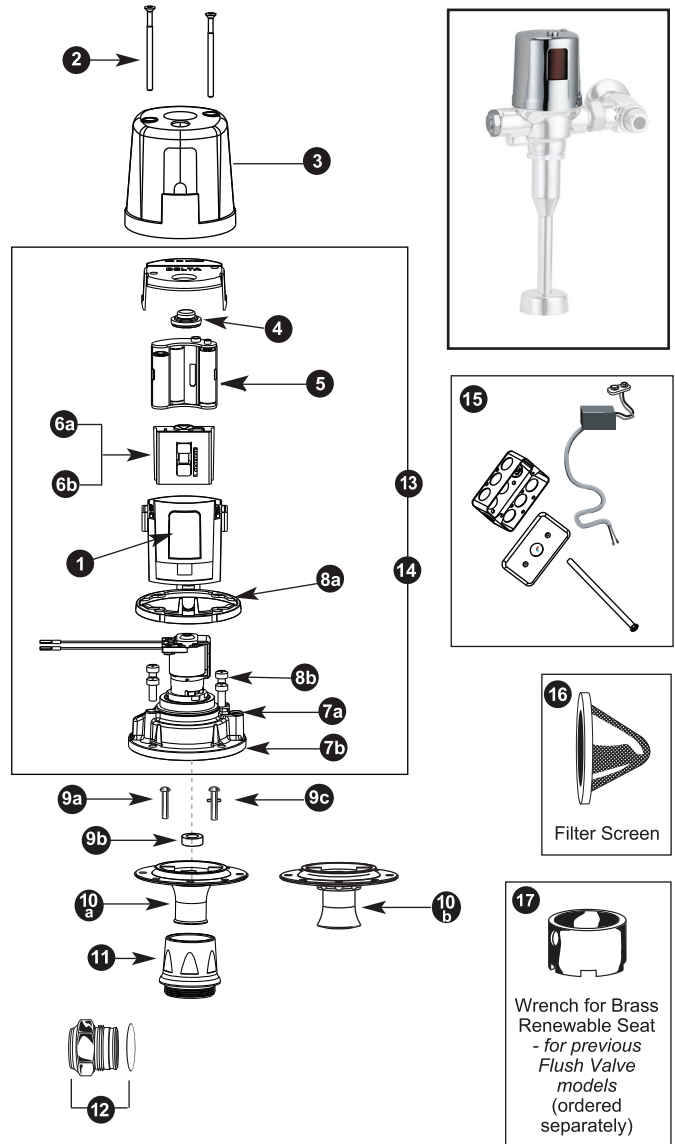


	TABLE 1			
	UR		WC	
	0.5L	1.9 & 3.8L	4.8 & 6L	13L
Poppet Pin	 060508A	 060507A	 060507A & 062025A	 060507A
Diaphragm	 061324A		 061323A	

PLEASE LEAVE this M&I Sheet with the owner, maintenance plumber, etc. as items relating to ongoing maintenance suggestions and procedures are included.