




Flush Valve for Washdown Urinals

Lever handle Back inlet supply flush valve for washdown urinal -brass oscillating lever handle(ADA compliant)- inlet cover tube -wall flange

Model No: 86T502

COMPLIES WITH:

- IAPMO listed to ASSE 1037/ASME A112.1037/CSA B125.37
-  Lever Handle Indicates compliance to ICC/ANSI A117.1
- Lever Handle ADA compliant to meet Handicapped Accessibility Standard ICC/ ANSI A117.1 of less than 5 lbs operating force
- (Contact Delta Representative for State and/or Local Approvals)



SPECIFICATION:

- Heavy Duty Cast Brass valve for 3/4" IP spud urinal
- Polished chrome plated finish
- Delta® slow close cartridge, factory set for 0.5 gallon (1.9 litres) flush
- 1/2" universal FIP/copper sweat inlet
- For Washdown Urinals
- Back inlet supply
- Brass oscillating lever handle
- Chrom plated brass coupling nuts, inlet cover tube
- Wall flange
- Spud flange and spud nut
- Outlet tube

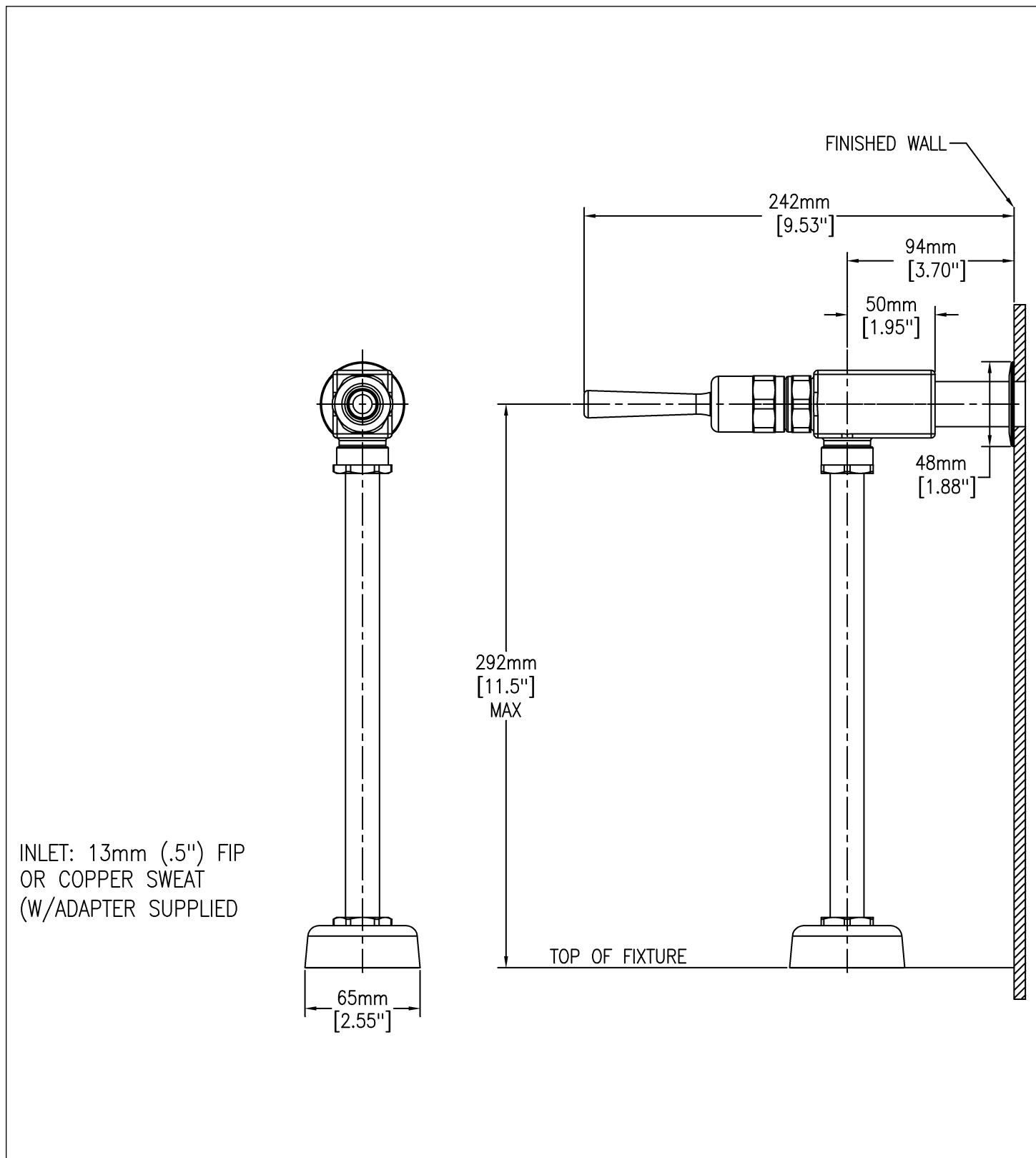
OPERATION:

- INSTALLATION WARNING:
- Models supplied LESS vacuum breakers must be installed on fixtures providing sufficient air gap protection against backflow.

(Dimensional drawing on following page)

Delta reserves the right (1) to make changes to specifications and materials, and (2) to change or discontinue models, both without notice or obligation. Dimensions are for reference. Measurement may vary plus or minus 6mm(0.25"). Mounting locations are suggested only. Check with local codes for requirements in your area. This spec was produced April 14, 2021.

Delta Faucet Company - 55 East 111th St. - Indianapolis, Indiana, USA 46280 - (317) 848-1812
Delta Faucet Canada - 395 Matheson Blvd E - Mississauga, Ontario, Canada L4Z 2H2 - (905) 712-3030



Delta reserves the right (1) to make changes to specifications and materials, and (2) to change or discontinue models, both without notice or obligation. Dimensions are for reference. Measurement may vary plus or minus 6mm(0.25"). Mounting locations are suggested only. Check with local codes for requirements in your area. This spec was produced April 14, 2021.