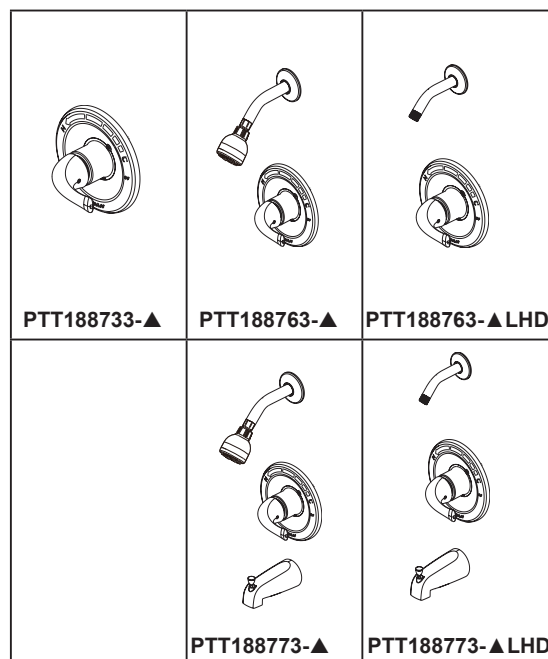
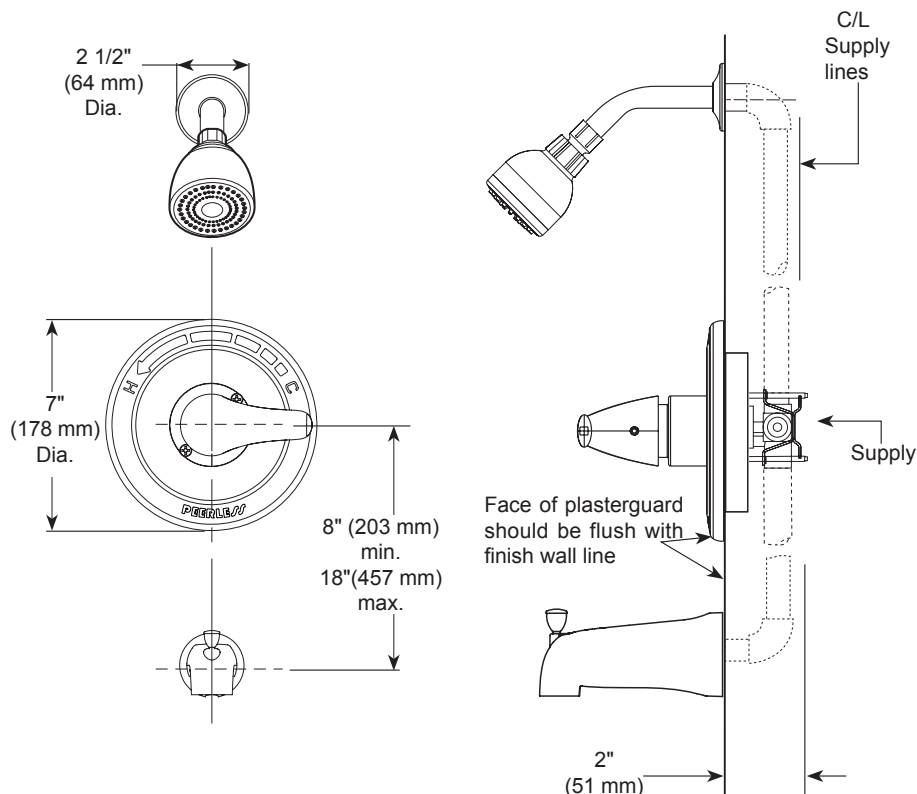


PEERLESS®

PTT188733-▲
PTT188763-▲
PTT188763-▲LHD
PTT188773-▲
PTT188773-▲LHD



TUB AND SHOWER FAUCET TRIM

- Valve Only (PTT188733-▲)
- Shower Only (PTT188763-▲ & PTT188763-▲LHD)
- Tub/Shower (PTT188773-▲ & PTT188773-▲LHD)

STANDARD SPECIFICATIONS:

- Shower head maximum flow rate 1.5 gpm @ 80 psi, 5.7 L/min @ 550 kPa.
- Maintains a balanced pressure of hot and cold water even when a valve is turned on or off elsewhere in the system.
- For use with MultiChoice® Universal rough valve body (R10000 Series); not included.
- Back-to-back installation capability.
- Temperature only controlled with handle rotating a maximum of 120° from full cold to the full hot.
- Cartridge utilise integral check valve to prevent the cross flow of water within the valve.
- "LHD" models indicate less shower head.
- Single setting shower head.
- Slip-on tub spout.
- Stem extension kit RP77991 can be ordered to allow for an additional 1 3/4" wall thickness. RP77991 ships with chrome escutcheon screws. For special finishes also order RP12630 escutcheon screws in desired finish.

WARRANTY

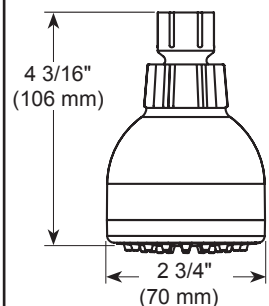
- Parts and Finish – Lifetime limited warranty; or for commercial purchasers, 10 years for multi-family residential (apartments and condominiums) and 5 years for all other commercial uses, in each case from the date that the product is received by the original purchaser or their authorized representative (installation contractor, etc.).
- Please go to www.peerlessfaucet.com for the complete details of our limited warranty.



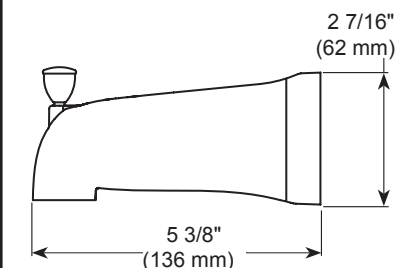
COMPLIES WITH:

- ASME A112.18.1 / CSA B125.1
- ASSE 1016 / ASME A112.1016 / CSA B125.16
- EPA WaterSense® - Applies to PTT188763-▲ & PTT188773-▲ only
- ICC/ANSI A117.1 – Valve control only

RP75572 ▲ 1.5 GPM



RP71609 ▲



*1/2"-14 threaded tub spout with slip-on adapter included

▲ Designate Proper Finish Suffix

PSP-B-PTT188763 Rev. I