

Slide Dimmer

120VAC, 60Hz

Single Pole (One Location)

Cat. No. 6631-L (optional indicator light), 600W

Single Pole and 3-Way (Two Location)

Cat. No. 6633-PL (optional indicator light) 600W – Cat. No. 6633-PØ (unlighted) 600W

INSTALLATION INSTRUCTIONS

WARNINGS AND CAUTIONS

- **TO AVOID FIRE, SHOCK, OR DEATH; TURN OFF POWER** at circuit breaker or fuse and test that power is off before wiring!
- To be installed and/or used in accordance with appropriate electrical codes and regulations.
- If you are unsure about any part of these instructions, consult an electrician.
- To avoid overheating and possible damage to this device and other equipment, do not install to control a receptacle, fluorescent lighting, a motor- or a transformer-operated appliance.

WARNINGS AND CAUTIONS

- Use only one (1) dimmer in a 3- or 4-way circuit. The switch(es) will turn the light on at the brightness level selected at the dimmer.
- Use with incandescent or 120V halogen fixtures only.
- Use this device with **copper or copper clad wire only**.

PK-93181-10-00-2D

Tools needed to install your Dimmer

Slotted/Philips Screwdriver
Pencil

Electrical Tape
Cutters

Pliers
Ruler

Installing Dimmer by itself or with other devices

If installing the dimmer in a single device application, proceed to the **INSTALLING YOUR DIMMER** section. If installing multiple dimmers in a multi-gang wallbox configuration proceed as follows:

MULTI-DEVICE APPLICATION:

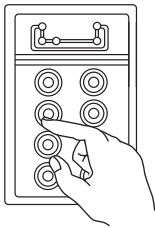
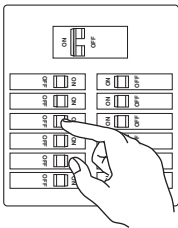
In multi-dimmer installations, the reduction of the dimmer's capacity is required. Refer to the chart for maximum load per dimmer.

MAXIMUM LOAD PER DIMMER FOR MULTI-DEVICE			
Cat. No.	Single	Two Devices	More than 2 Devices
6631/33	600W	500W	400W

INSTALLING YOUR DIMMER

NOTE: Use check boxes ☒ when steps are completed.

- Step 1** **WARNING: TO AVOID FIRE, SHOCK, OR DEATH; TURN OFF POWER** at circuit breaker or fuse and test that power is off before wiring!

☐

Step 2 Removing existing switch:

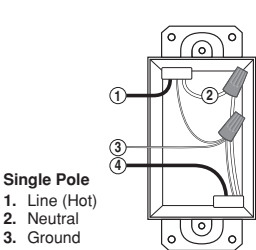
☐

Remove existing wallplate and switch mounting screws. Carefully pull switch from wall box. **DO NOT** remove wires attached to the switch at this time.

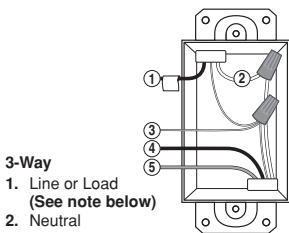
Step 3 Identifying your wiring application (most common):

☐

NOTE: If the wiring in the wall box does not resemble any of these configurations, consult an electrician.



Single Pole
1. Line (Hot)
2. Neutral
3. Ground
4. Load



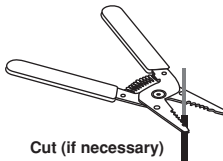
3-Way
1. Line or Load (See note below)
2. Neutral
3. Ground
4. First Traveler – note color
5. Second Traveler – note color

IMPORTANT: For 3-Way applications, note that one of the screw terminals from the old switch being removed will usually be a different color (Black) or labeled Common. Tag that wire with electrical tape and identify as the common (Line or Load) in both the dimmer wall box and 3-way wall box.

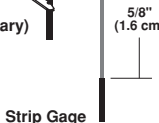
Step 4 Preparing and connecting wires:

☐

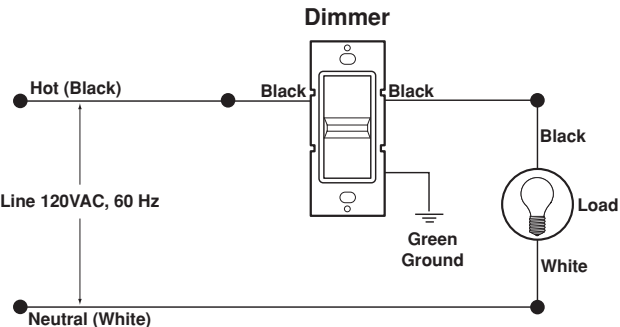
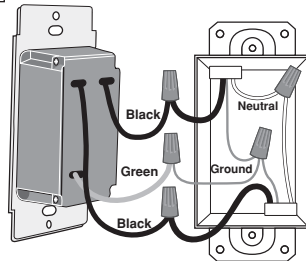
- Make sure that the ends of the wires from the wall box are **straight (cut if necessary)**.
- Remove 5/8" (1.6 cm) of insulation from each wire in the wall box (shown).
- For Single-Pole Application, go to **Step 5a** (6631) or **5b** (6633).
- For 3-Way Application, go to **Step 5b**.



Cut (if necessary)



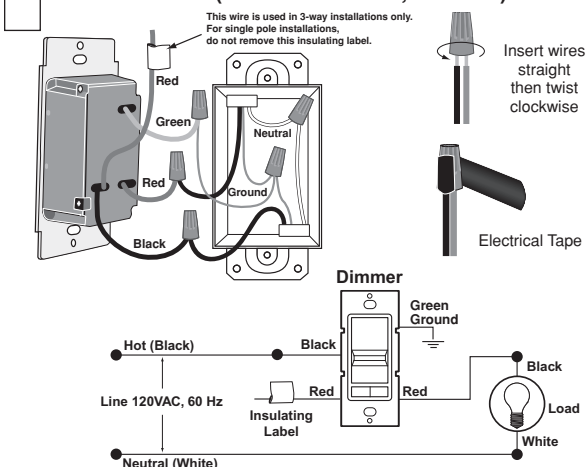
Step 5a Single-Pole Wiring Application (Cat. No. 6631-L):

☐

Connect wires per **WIRING DIAGRAM** as follows:

- Screw wire connectors on clockwise making sure no bare conductors show below the wire connectors. Secure each connector with electrical tape.
- Green dimmer Ground lead to Green or bare copper wire in wall box.
 - Black dimmer lead to any wall box wire removed from old switch.
 - Remaining Black dimmer lead to remaining wall box wire.
 - **Proceed to Step 6.**

Step 5b Single-Pole Wiring Application using 3-Way Dimmer (Cat. No. 6633-PL, 6633-P0):



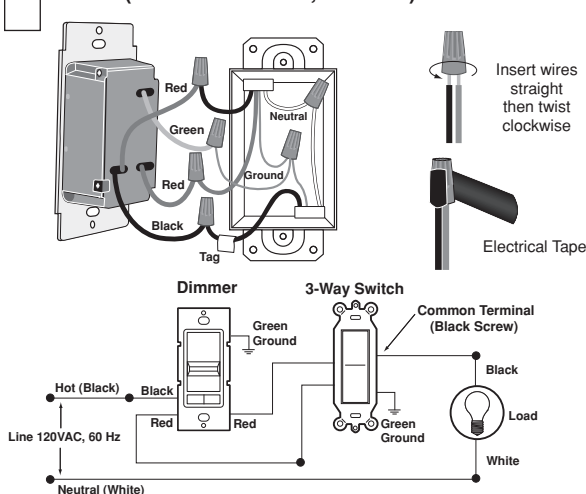
Connect wires per WIRING DIAGRAM as follows:

Screw wire connectors on clockwise making sure no bare conductors show below the wire connectors. Secure each connector with electrical tape.

- Green dimmer Ground lead to Green or bare copper wire in wall box.
- Black dimmer lead to any wall box wire removed from old switch.
- Red dimmer lead without insulating label to remaining wall box wire.
- Remaining Red dimmer lead should have Red insulation label affixed. **Proceed to Step 6.**

NOTE: If insulating label is not affixed to Red lead, use a small wire connector or electrical tape to cap off. **Proceed to Step 6.**

Step 5c 3-Way Wiring Application (Cat. No. 6633-PL, 6633-P0):



Step 5c Cont.

Connect wires per WIRING DIAGRAM as follows:

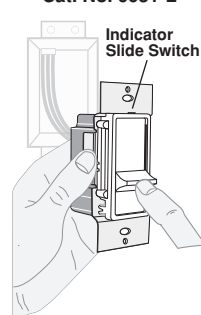
Screw wire connectors on clockwise making sure no bare conductors show below the wire connectors. Secure each connector with electrical tape.

- Green dimmer Ground lead to Green or bare copper wire in wall box.
- Black dimmer lead to tagged (common) wall box wire identified when removing old switch.
- Remove Red insulating label from Red lead.
- Any Red dimmer lead to any of the remaining wall box wires.
- Remaining Red dimmer lead to remaining wall box wire.

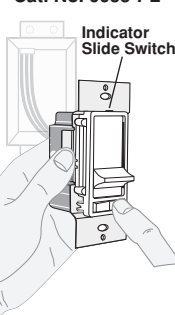
Step 6 Testing your Dimmer prior to mounting in wall box:

NOTE: Cat. No. 6633-PL is shipped with the indicator light enabled (On). If you do not want the light option (Off), with an insulated screwdriver slide the switch at the TOP of the frame to the right while facing the device before mounting wallplate.

Cat. No. 6631-L



Cat. No. 6633-PL



- Restore power at circuit breaker or fuse.
- Carefully holding Dimmer as shown proceed as follows:

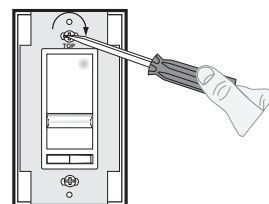
For Cat. No. 6631, slide control lever up to highest position. Lights should turn ON to brightest level.

For Cat. No. 6633, slide control lever to highest position. If lights are not ON, press rocker. Lights should turn ON to brightest level.

If lights do not turn ON, refer to the TROUBLESHOOTING section.

Step 7 Dimmer Mounting: TURN OFF POWER AT CIRCUIT BREAKER OR FUSE.

Installation may now be completed by carefully positioning all wires to provide room in wall box for dimmer. Mount dimmer into box with mounting screws supplied. Attach Decora® wallplate.



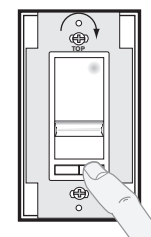
Step 8 Restore Power: Restore power at circuit breaker or fuse. Installation is complete.

Operation

NOTE: If using the indicator light option, the light will illuminate when the dimmer is in the OFF position to facilitate access in the dark.

NOTE: If using the dimmer in a 3-way application, the lights will turn ON at brightness set on dimmer's slide control lever. The lighting level can be controlled from the dimmer location and can be switched ON/OFF from either the dimmer or switch location.

Cat. No. 6633-PL depicted



Cat. No. 6631-L

ON: Slide control lever up to turn lights ON at desired level of light.

OFF: Slide control lever all the way down until it clicks to turn lights OFF.

BRIGHTEN: Raise slider control lever.

DIM: Lower slider control lever.

Cat. No. 6633-PL, 6633-P0
ON: Push rocker switch ON.

OFF: Push rocker switch OFF.

BRIGHTEN: Raise slider control lever to desired level of light.

DIM: Lower slider control lever.

Troubleshooting

- Lights Flickering
 - Lamp has a bad connection.
 - Wires not secured firmly with wire connectors.
- Light does not turn ON and ON/OFF LED does not turn ON
 - Circuit breaker or fuse has tripped.
 - Lamp is burned out.
 - Lamp Neutral connection is not wired.

NOTE: If further information is needed in identifying the HOT wire in a 3-Way application, go to Leviton's website at www.leviton.com.

For non-standard wiring applications, refer to chart

WIRE CONNECTOR / # OF CONDUCTORS COMBINATION CHART	
1- #12 w/ 1 to 3 #14, #16 or #18	
2- #12 w/ 1 or 2 #16 or #18	
1- #14 w/ 1 to 4 #16 or #18	
2- #14 w/ 1 to 3 #16 or #18	

For Technical Assistance Call: 1-800-824-3005 (U.S.A. Only)
www.leviton.com

Decora is a registered trademark of Leviton Manufacturing Co., Inc.

© 2017 Leviton Mfg. Co., Inc.

PK-93181-10-00-2D

LIMITED 5 YEAR WARRANTY AND EXCLUSIONS

Leviton warrants to the original consumer purchaser and not for the benefit of anyone else that this product at the time of its sale by Leviton is free of defects in materials and workmanship under normal and proper use for five years from the purchase date. Leviton's only obligation is to correct such defects by repair or replacement, at its option. **For details visit www.leviton.com or call 1-800-824-3005.** This warranty excludes and there is disclaimed liability for labor for removal of this product or reinstallation. This warranty is void if this product is installed improperly or in an improper environment, overloaded, misused, opened, abused, or altered in any manner, or is not used under normal operating conditions or not in accordance with any labels or instructions. **There are no other or implied warranties of any kind, including merchantability and fitness for a particular purpose, but if any implied warranty is required by the applicable jurisdiction, the duration of any such implied warranty, including merchantability and fitness for a particular purpose, is limited to five years. Leviton is not liable for incidental, indirect, special, or consequential damages, including without limitation, damage to, or loss of use of, any equipment, lost sales or profits or delay or failure to perform this warranty obligation.** The remedies provided herein are the exclusive remedies under this warranty, whether based on contract, tort or otherwise.

ARTWORK PRINT SPECIFICATIONS

LEVITON®

PART NUMBER PK-93181-10-00-2D **REV** **DESCRIPTION** Instruction Sheet

SPECIFICATIONS :

* **Thickness:** 40 Lb.
 * **Material:**
 * **Finish:**
 :
 * **For manuals - designates cover specifications**

* **Color s :** 1 over 1

1: Black
 2: ☒ Spot
 3: ☐ CMYK
 4:

* **Fonts:**

1: Helvetica
 2:
 3:
 4:

Die Line Key: - - - - Perforate

— Die Cut - - - - Fold Line - - - - Kiss Cut ······ Cellophane ||||| Glue

MANUAL INTERIORS / BINDERY / FOLD SCHEME :

Body Material:
Thickness:
Bindery
☐ Die cut ☒ Fold ☐ Saddle Stitch
☐ Perfect Bind ☐ Drill ☐ Trim

Color s : over

1:
 2: ☐ Spot
 3: ☐ CMYK
 4:

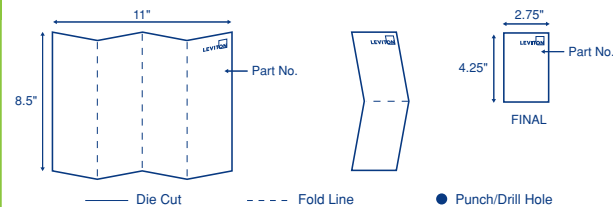
Fonts:

1:
 2:
 3:
 4:

PROCESS :

☒ Offset ☐ Flexo
☐ Other
Line Screen:
Angle:
Resolution:

DIMENSIONS / FOLD SCHEME / BINDERY DIAGRAM



COMMENTS :

The information in this document is the exclusive PROPRIETARY property of LEVITON MANUFACTURING COMPANY, INC. It is disclosed with the understanding that acceptance or review by the recipient constitutes an undertaking by the recipient, (1) to hold this information in strict confidence, and (2) not to disclose, duplicate, copy, modify or use the information for any purpose other than that for which disclosed.

FOR LEVITON USE ONLY

Approvals: ☒ Plant 08 J. Tang ☐ CQA ☒ PM B. Grande
☐ Mktg ☒ Eng P. Soccoli ☐ S & A
☐ Cust ☐ Other ☒ Other G. Musano

PN-ARN: EC13497-C002717

ECR Number: ECR13497

Pilot Rev:

Artist: D. Hunt

Released Artwork Format: Production PDF

Artwork Release Date: 4/20/17

Notes: