

# Below Deckmount Sink Faucets 8" Centers TUF-TECK™

TECK®



## Specification: (example)

- Below deckmount sink faucet
- 203mm (8") centers, two handle
- Polished chrome plated finish trim
- TUF-TECK institutional structures
- **CAST BRASS** bodies
- **BRASS** swing spout or 3/8" IPS **BRASS PIPE** Rigid/Swivel Gooseneck Spout
- Metal hold-down package
- Color indexed metal handles with vandal resistant screws
- and ... with ... Hose Spray and Diverter (if applicable)
- with ... (add spout required)
- with ... (add outlet required)
- with ... (add handle required)



## Engineer/Architect Approval

Model Specified:

Approval:

Date:

DESCRIPTION	PRODUCT NO.
WITH hose and spray	27T1
LESS hose and spray	27T2



SPOUT	OUTLET	HANDLE
0 <input type="checkbox"/>	0 <input type="checkbox"/>	0 <input type="checkbox"/>
1 203mm (8") Wallform Swing Spout (2) <input type="checkbox"/>	1 <input type="checkbox"/>	1 Five Flute Handles <input type="checkbox"/>
2 203mm (8") Tubular (S5) Swing Spout (2) <input type="checkbox"/>	2 Vandal Resistant 2.2 USGPM (8.3 L/min.) Laminar Non-Splash Flow Control Moderator <input type="checkbox"/>	2 <input type="checkbox"/>
3 *203mm (8") Spout 90° Limited Swing (For 27C2 only) <input type="checkbox"/>	3 Vandal Resistant 2.2 USGPM (8.3 L/min.) Flow Control Aerator <input type="checkbox"/>	3 76mm (3") Lever Blade Handles <input type="checkbox"/>
4 <input type="checkbox"/>	4 Standard 2.2 USGPM (8.3 L/min.) Flow Control Aerator <input type="checkbox"/>	4 102mm (4") Blade Handles, Sanitary Hoods <input type="checkbox"/>
5 <input type="checkbox"/>	5 <input type="checkbox"/>	5 152mm (6") Wrist Handles, Sanitary Hoods <input type="checkbox"/>
6 <input type="checkbox"/>	6 <input type="checkbox"/>	6 <input type="checkbox"/>
7 <input type="checkbox"/>	7 Smooth End, Laminar Flow Control in Base of Gooseneck Spout 1.1 USGPM (4.2L/min.) (3) <input type="checkbox"/>	7 <input type="checkbox"/>
8 <input type="checkbox"/>	8 <input type="checkbox"/>	8 <input type="checkbox"/>
9 Heavy Duty 152mm (6") Bend Rigid/Swivel (R4) Gooseneck Spout (1) <input type="checkbox"/>	9 <input type="checkbox"/>	9 <input type="checkbox"/>

(1) See Page 9.T.5 for **Optional Rigid/Swivel Spouts**. These spouts can ONLY be added to **SPOUT Option No. 9**.

(2) See Page 9.T.7 for **Optional Swing Spouts**. These spouts can ONLY be added to **SPOUT Option No. 2**.

(3) This outlet can ONLY be added to **SPOUT Option No. 9**. Refer to [www.specselectonline.com](http://www.specselectonline.com) for individual models. Note: Use this page front and back as a product submittal sheet.

Flowrates are at 60 PSI.

\*\*Available on 27T2 Deckmount Sink Faucet only (Patent Applied For)

See current price list for product availability.

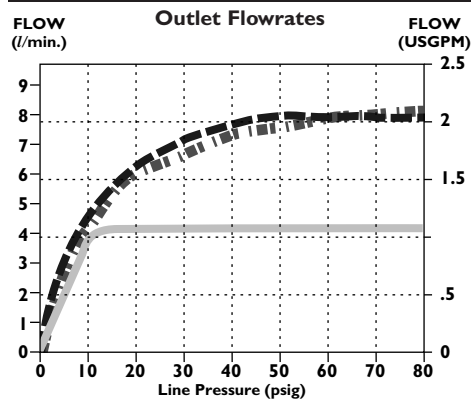
Page 3.T.3 Rev. A

### Approvals:

- CSA certified
- Complies to ASME A112.18.1
- Lever Blade Handles No.'s 3, 4 and 5, ADA Compliant and meet Handicapped Accessibility Standard ASME A117.1 of less than 5 lbs. operating force.
- IAPMO listed
- UL listed to U.S. and Canadian Safety Standards and classified in accordance with ANSI/NSF61-97b 21PL

(Contact Delta Representative for State and/or Local Approvals.)

### FLOWRATE vs PRESSURE



#### Spout Outlets

- No. 3 & 4 Aerator
- ▤ No. 2 Laminar Flow Outlet
- No. 7 Flow Control

OUTLET NO.	"D"	
	mm	in.
2	18	0.69
3	18	0.69
4	17	0.67

### GOOSENECK SPOUT ASSEMBLIES

SPOUT/OUTLET	"A"		"C"		"L"	
	mm	in.	mm	in.	mm	in.
Gooseneck-Standard (R4) for outlets #2, 3, 4	152	6	124	4.9	146	5.8
Gooseneck-Standard (R4) for outlets #7	152	6	117	4.6	152	6.0

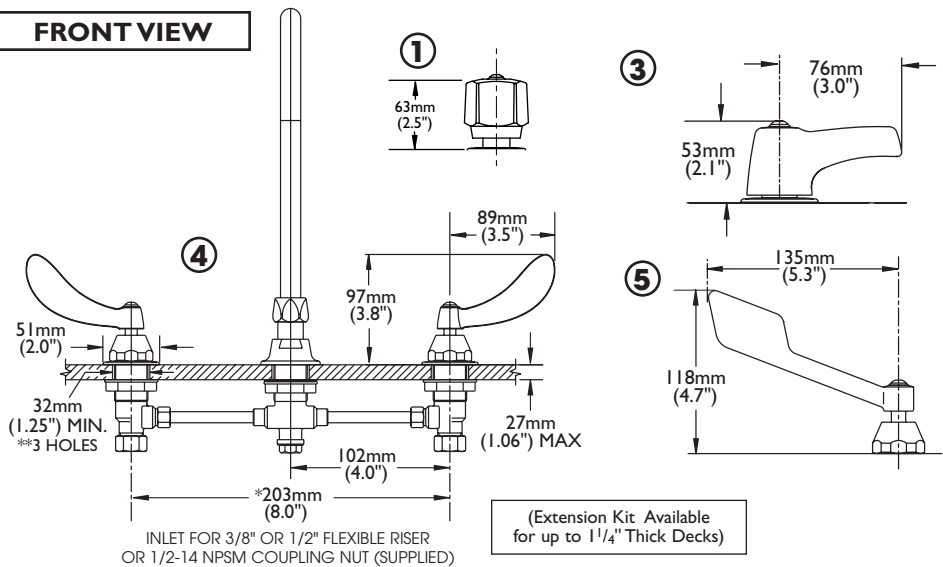
See Page 9.T.5 for additional optional spouts.

INLETS - 1/2" MIP/Coupling Nuts

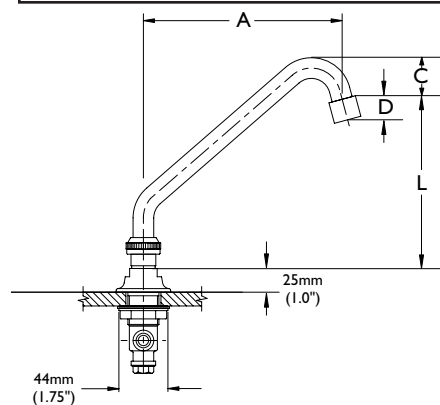
Note: Measurements may vary  $\pm 6$ mm (0.25")

Refer to [www.specselectonline.com](http://www.specselectonline.com) for individual models.

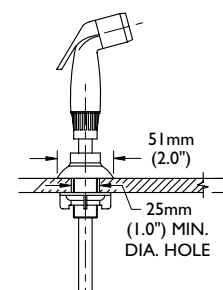
### FRONT VIEW



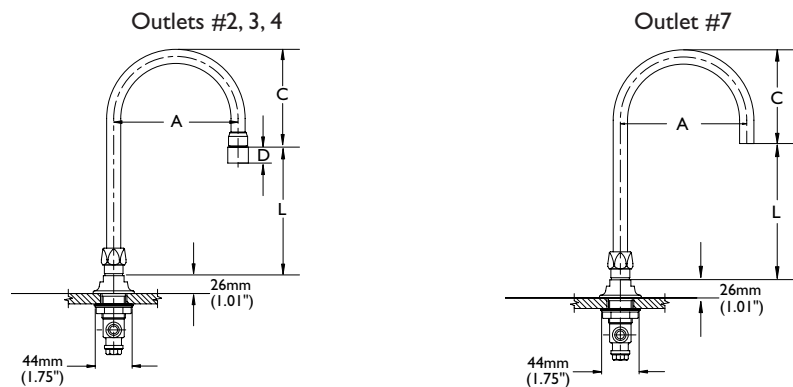
### SWING SPOUT



### SPRAY



### GOOSENECK SPOUT



### SWING SPOUT ASSEMBLIES

Spout No.	SPOUT TYPE	"A"		"C"		"L"	
		mm	in.	mm	in.	mm	in.
1	8" Wallform Spout	206	8.1	15	0.6	130	5.1
2	8" Tubular Spout (S5)	185	7.3	41	1.6	147	5.8
3	8" Limited Swing Spout	206	8.1	15	0.6	130	5.1

See Page 9.T.7 for additional optional spouts.

Note: Use this page front and back as a product submittal sheet.