

Project: _____

Type: _____

Drawn by: _____ Catalogue #: _____

Date: _____

Individual Spec Sheet

TRADITIONAL RECESSED

ORDERING INFORMATION

Order code: 64363
Model number: RF4in/NC/IC/E26/ELUME
UPC: 069549643635
Case quantity: 6

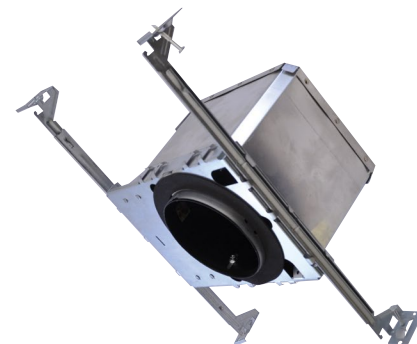
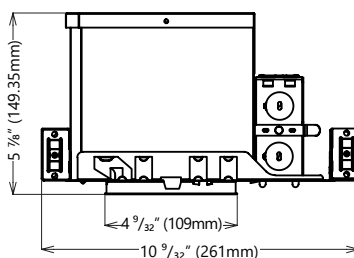
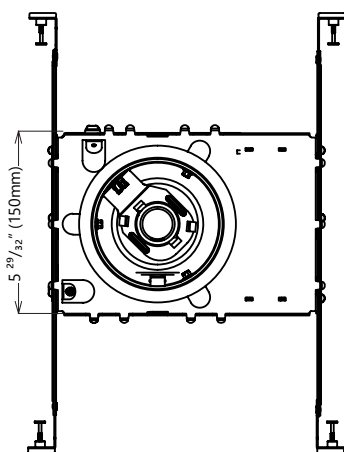
PHYSICAL DATA

Type: New Construction - IC Airtight
Housing material: Industrial-strength galvanized steel
Size in. (mm): 4 ¼ (108)
Cutting hole diameter in. (mm): 4 ½ (114)

PERFORMANCE DATA

Sockets: E26
Volts (V): 120
Thermal protection: Yes
Junction box: Yes
Wire to wire connectors: Yes

DIMENSIONS



1¹
warranty


airtight

6
damp location

50w
maximum per lamp



Max. of 4 no. 12 AWG through branch circuit conductor suitable for 90°C permitted in box.
 This lighting equipment complies with Canadian standard ICES-005 for use in residential applications.
 Data is based upon tests performed in a controlled environment.
 Actual performance can vary depending on operating conditions. Specifications are subject to change without notice.

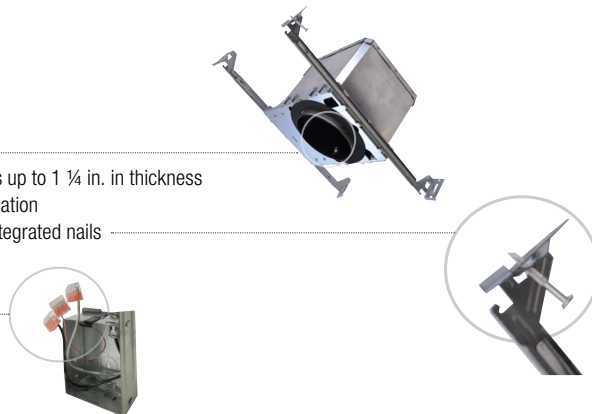
¹ For complete warranty information please visit www.standardpro.com

COMPATIBLE LAMPS AND TRIMS

Compatible lamps	Max Wattage (W)	Compatible E-Lume trims
PAR20	35	64387, 64389
PAR20	50	64372, 64373, 64374, 64376, 64377, 64378, 64379, 64381, 64383, 64384
PAR16	35	64386, 64388
MR16 (E26)	50	64370, 64371, 64375, 64380, 64382, 64385

INSTALLATION

- Screw adjusting system
- Permits the installation in ceilings up to 1 ¼ in. in thickness
- Suitable for double drywall application
- Hanger bars included with pre-integrated nails
- Push-in connectors



CAUTIONS

- Turn power off before inspection, installation, or removal
- Risk of electric shock – do not use where directly exposed to water or weather
- Risk of fire. Blinking light of this thermally protected fixture may indicate overheating
- Minimum 90 °C supply conductor
- May be interconnected using the same circuit
- Use with ELUME trims only

Qty	Description	Price

I accept the specifications of the luminaire configuration mentioned above.

Name: _____

Company: _____

Signature: _____

Date: _____

Data is based upon tests performed in a controlled environment. Actual performance can vary depending on operating conditions.
All products are subject to change or may be discontinued any time without notice.