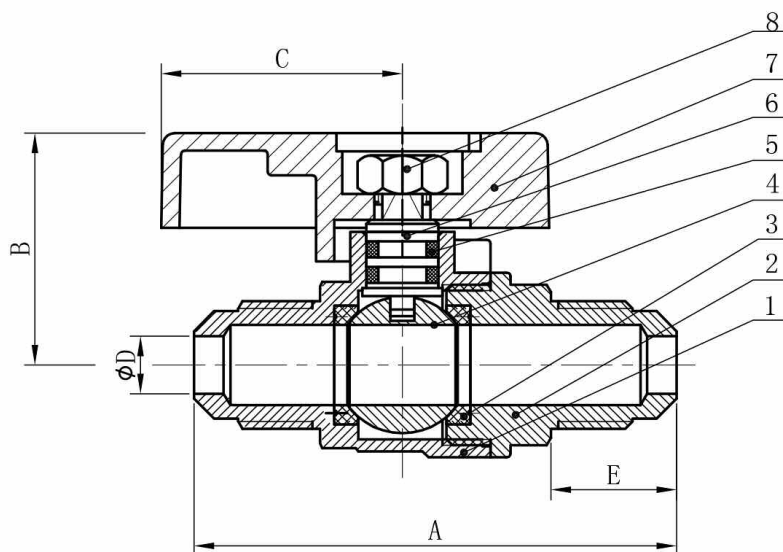


TECHNICAL DATA SHEET

FORGED BRASS BALL VALVES (BV5042)

Applications:

For Indoor/Outdoor applications. C.S.A. Certified forged brass ball valves for Natural and Propane Gas (vapor) Brass valves for use in W.O.G. = Water, Oil and Gas; W.S.P. = Working Steam Pressure applications.



PART No.

BV5042-6
BV5042-8
BV5042-10

DESCRIPTION

3/8 FLARE TUBE TO 3/8 FLARE TUBE, 600 WOG, 150 W.S.P. FULL PORT
1/2 FLARE TUBE TO 1/2 FLARE TUBE, 600 WOG, 150 W.S.P. FULL PORT
5/8 FLARE TUBE TO 5/8 FLARE TUBE, 600 WOG, 150 W.S.P. FULL PORT

Standard Port – Blowout-Proof Stem – PTFE Seats
CSA certified to 5 P.S.I. FROM APPLIANCE TO METER
Temperature: -40°F to +125°F, -40°C to + 52°C

MATERIAL LIST

Item	Part	Material
1	Body	Brass
2	End Cap	Brass
3	Ball Seat	PTFE
4	Ball	Brass
5	O-Ring	NBR
6	Stem	Brass
7	Handle	Aluminum
8	Stem Nut	Steel